



Evolution of Kahnawà:ke Education

QUESTION:

Is it true the Kahnawà:ke Combined Schools Committee (KCSC) and the Kahnawà:ke Education Center (KEC) are attempting to make our community schools “non-native”?

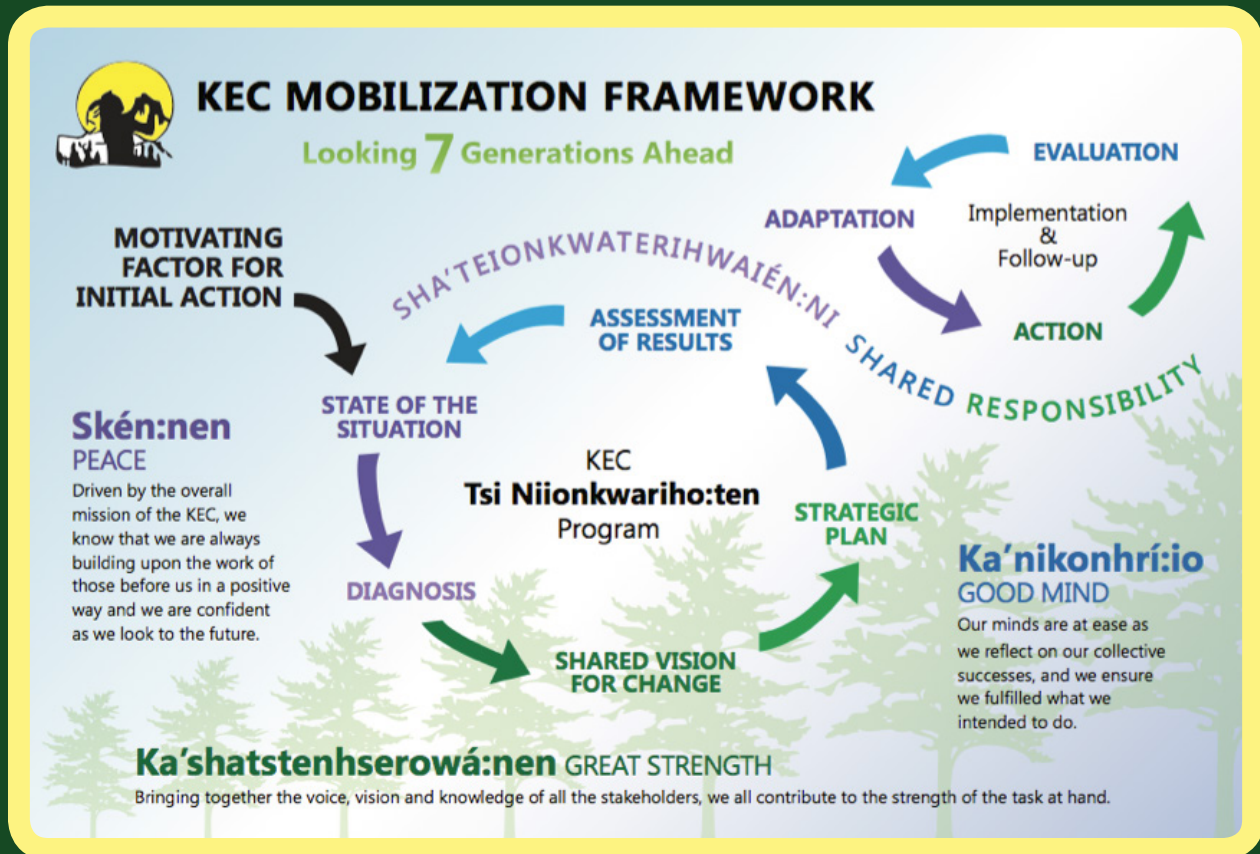
ANSWER: No, that is 100% false.

In the past five years, under the present KEC and KCSC leadership, the Kahnawà:ke Education System has seen the greatest financial and human resource investment in language and cultural education. We are living Indigenous Control of Indigenous Education on all levels.



WHAT THE FRAMEWORK DOES...

The three Rotinohshonni principles identified in this framework guide how we conduct ourselves in administration, governance, and everything that is done in our schools.





- **For the first time, we have developed an on-going framework for our system that is based on Rotinohshonni principles of Skén:nen, Ka'nikonhrí:io and Ka'shatstenhserowá:nen. We have developed a Tsi Niionkwarihò:ten Program; a foundation upon which all our curriculum is embedded from.**
- **For the first time in the history of the KEC, we have established a system-wide Curriculum Team and our first steps were to assess and enhance the Kanien'kehá:ka language and culture content of what we are teaching in all schools. Stay tuned for future features which will highlight the team and their work!**
- **For the first time, we are implementing a brand new social studies curriculum from Pre-K through to grade 6 and currently preparing development into KSS.**
- **For the first time, we have established the KCSC Standing Committee on Curriculum provides feedback and guidance to the Curriculum Team during the process of development and implementation of new curriculum. New curriculum is presented to the KCSC prior to implementation at the schools.**
- **For the first time, we have a Kindergarten Forest, a greenhouse, outdoor learning spaces, project based learning, and gardens.**
- **Teachers have been receiving a tremendous amount of ongoing cultural professional development - more than in any other period in the history of Kahnawà:ke education. Professional development supports all educators with the tools to implement the curriculum being developed.**

**THE VISION OF OUR FOUNDING MEMBERS
AND COMMUNITY IS GRADUALLY COMING TO LIFE!**