



Kahnawà:ke Combined Schools Committee

1968 - 2018 Celebrating 50 Years of Parental Control of Kahnawà:ke Education

Deidre Kahwinéhtha Diome, Chairperson



Representation: GENERAL

Appointed: Fall 2015 **Term Ending:** Fall 2018

Responsibilities: Coordinates Monthly Meetings, Supervises Administrative Support, Strategic Steering & Planning Committees, Organizational Structure Committee, Standing Committee on Directors Supervision, Standing Committee on Finance, Student & Family Consultation Steering Committee, Communications Liaison, MCK Liaison, Collective Impact Liaison, FNEC/AFNQL Liaison, Legislation & Policy Sub Committees, KOR Liaison

Melissa Kahronienhá:wi McGregor, Vice Chair & Secretary



Representation: GENERAL

Appointed: Winter 2013 **Term Ending:** Fall 2017

Responsibilities: Supervises Administrative Support, Strategic Steering & Planning Committees, Organizational Structure Committee, Standing Committee on Directors Supervision, Admissions Sub-Committee, Student & Family Consultation Steering Committee, KCSC Grievance Sub-Committee, Legislation & Policy Sub-Committees, Maintains KCSC central file

Karonhi:io Curotte



Representation: KAHNAWAKE SURVIVAL SCHOOL

Appointed: Fall 2013 **Term Ending:** Fall 2019

Responsibilities: MCK Liaison, KCSC Grievance Sub-Committee, In-School Liaison, Communications Liaison, FNEC/AFNQL Liaison, Legislation & Policy Sub-Committees

Diane Kaweriostha Deer



Representation: 207 LONGHOUSE

Appointed: Fall 2011

All representative terms are indeterminate and are reaffirmed by the People of the Longhouse every three years.

Responsibilities: Strategic Steering & Planning Committees, Curriculum Committee, Standing Committee on Directors Supervision, Legislation & Policy Sub-Committees

Amelia Tekwatonti McGregor



Representation: MOHAWK TRAIL LONGHOUSE

Appointed: Winter 2015

All representative terms are indeterminate and are reaffirmed by the People of the Longhouse every three years.

Responsibilities: MCK Liaison, Communications Liaison, KOR Liaison, Legislation & Policy Sub-Committees

Leo Raia'tahén:te Parent



Representation: KARONHIANÓNHNHA

Appointed: Spring 2017 **Term Ending:** Fall 2020

Responsibilities: In-School Liaison, Legislation & Policy Sub-Committees

Shelley Kahnerahtentha Rice



Representation: KAHNAWAKE SURVIVAL SCHOOL

Appointed: Winter 2015 **Term Ending:** Fall 2018

Responsibilities: Admissions Sub-Committee, Lands (KSS) Sub-Committee, Post-Secondary Policy Sub-Committee, KCSC Grievance Sub-Committee, Curriculum Committee, In-School Liaison, Legislation & Policy Sub-Committees

Kaylea Kahniehtenhá:wi Curotte



Representation: KATERI SCHOOL

Appointed: Fall 2017 **Term Ending:** Fall 2020

Responsibilities: In-School Liaison, Legislation & Policy Sub-Committees

Cheryl Katsitsahá:wi Zacharie

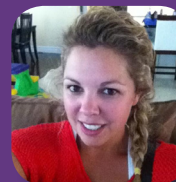


Representation: GENERAL

Appointed: Fall 2015 **Term Ending:** Fall 2018

Responsibilities: Admissions Sub-Committee, Standing Committee on Directors Supervision, Student & Family Consultation Steering Committee, Legislation & Policy Sub-Committees

Chelsea Katsitsenhá:wi Lahache



Representation: KATERI SCHOOL

Appointed: Fall 2017 **Term Ending:** Fall 2020

Responsibilities: In-School Liaison, Legislation & Policy Sub-Committees

Kary Tsoié:on Robertson



Representation: KARONHIANÓNHNHA

Appointed: Spring 2018 **Term Ending:** Fall 2021

Responsibilities: In-School Liaison, Legislation & Policy Sub-Committees

Members of the KCSC have the latitude to volunteer to work on as many initiatives as suit their lifestyle and personal schedules. While some members may volunteer 6 hours per month, other members can invest up to 120 hours per month.

Niawenhkó:wa to Our Dedicated Volunteers

As parents, educators, and community, our greatest gift of all is our children. They are our future.

OUR STUDENTS ARE THE HEART OF EVERYTHING WE DO

OUR VISION FOR KAHNAWÀ:KE EDUCATION

Nurtured by a strong healthy circle of family and community, all of our students are empowered and proud Onkwehón:we who are connected to the natural world. Our students are lifelong learners who are wholistically well prepared to thrive on any life path they choose.

**French
Language**

Nutrition

FAMILY INVOLVEMENT

Arts

Social Studies

**Physical
Health**

Science

Math

Language Arts

Robotics

Vocational

Political Science & Law

**Animal
Husbandry**

Life Skills

Technology Athletics

**Project
Based
Learning**

Music

Individualized Learning

Agriculture

Coding

Literacy

Ceremonies

COMMUNITY INVOLVEMENT

Respect

Land

Kanien'kéha

Pride

TSINIIONKWARIHÒ:TEN

History

**Based
Learning**



Based on our consultations and assessments, we know that there are high expectations on the Kahnawà:ke Education System to deliver the best possible curriculum, programs, and services.

In order to meet the needs of our students, we must all be willing to work and grow together.

SKÀTNE IONKWATEHIARÓNTIE