



The Northwest Tri-County IU5, an educational service agency, enriches the community by creating and implementing quality services to meet the current and emerging needs of all learners through safe and innovative environments.



[RCI Dual Enrollment Contact Information](#)

Northwest Tri-County Intermediate Unit

252 Waterford Street
Edinboro, PA 16412

(814) 734-5610
Toll Free 1 (800) 677-5610

www.iu5.org
rci@iu5.org

[Non-Discrimination Policy Statement](#)

It is the policy of the Northwest Tri-County Intermediate Unit not to discriminate on the basis of age, religion, sex, race, color, national origin, ancestry, disability, or non-job related disability (including sexual harassment, sexual orientation, gender identity, and gender expression), in the admission or access to, or in the provision of services, programs, or employment in compliance with Title VI of the Civil Rights Act of 1964, Section 1604 of Title VII of the Civil Rights Act of 1964, Executive Order 11246 and 11375, Title IX of the Educational Amendments of 1972, Section 504 of the Rehabilitation Act of 1973, the Americans with Disabilities Act of 1990, the Age Discrimination in Employment Act, the Civil Rights Act of 1991, the Pennsylvania Human Relations Act.

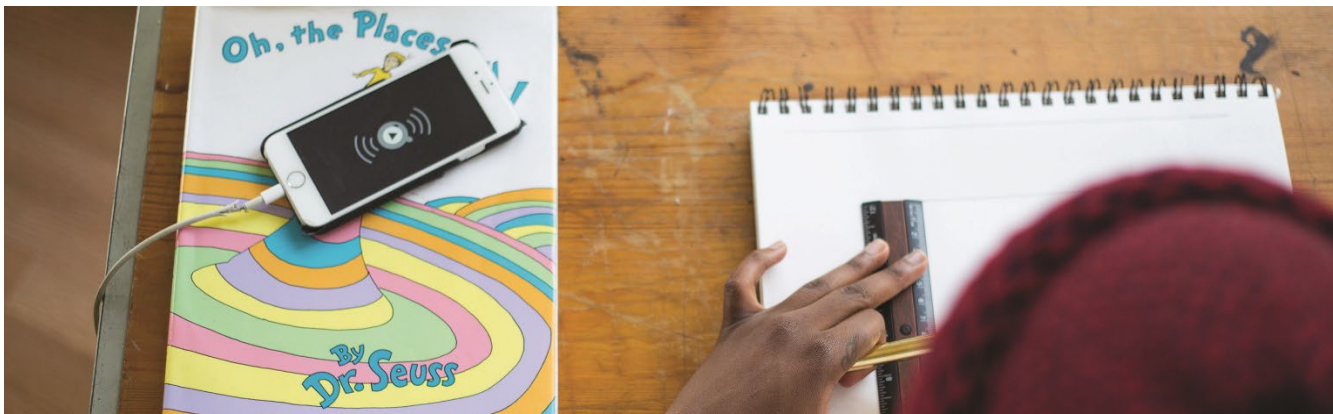
For information relevant to this policy statement, contact:
Christine Carucci, 504 Coordinator & ADA Coordinator, or
Brad Whitman, Title IX Coordinator
252 Waterford Street, Edinboro, PA 16412
Phone (814) 734-5610 TDD (814) 734-1098



RCI **REGIONAL CHOICE INITIATIVE**

[Northwest Tri-County Intermediate Unit 5](#)

The Regional Choice Initiative Dual Enrollment Program offers a unique experience for all students in the Northwest Tri-County Intermediate Unit area who are preparing for college level work. Start planning now!



RCI Dual Enrollment Program

Now preparing for its 16th year, the RCI program continues to offer an experience that allows students in NW Pennsylvania to earn high school and college credits at the same time. Developed and supported by superintendents and school administrators in our tri-county area, experience with this program has shown there are many benefits from participating in RCI.

Students are introduced to the rigor of college expectations during high school while parents and high school staff are available for support.

- Direct instruction from college faculty
- Greater independence
- Transition to college
- College credits
- Discounted college costs

Pennsylvania legislation allows high school juniors and seniors to take college courses while earning credit for both (concurrent enrollment). High school freshmen and sophomores can enroll in RCI but require special approval through the university admissions office.

Interested?

Contact your high school guidance office for program details, locations, and transportation for your district.

Visit the Regional Choice Initiative (RCI) Dual Enrollment website at www.iu5.org under the "Parent & Student Services" tab.

Student Requirements

Student requirements vary at each university. At a minimum, students must be proficient on Pennsylvania assessments, have taken college prep courses, meet the high school requirements, and have the recommendation of the high school guidance counselor or principal. (Cyber students may participate in RCI only if the students are enrolled in a district run cyber program).

College Requirements

All dual enrollment courses must:

- Not be modified or changed for high school students
- Yield grades on a college transcript
- Be taught by college faculty who meet all the college employment requirements

Eligible Districts

- Conneaut
- Corry
- Crawford Central
- Fairview
- Fort LeBoeuf
- General McLane
- Girard
- Harbor Creek
- Iroquois
- Millcreek
- North East
- Northwestern
- PENNCREST
- School District of the City of Erie
- Union City
- Wattsburg
- Warren

Participating Colleges & Tuition

Tuition listed is for 2017-18 (tuition may remain the same or be adjusted slightly for 2018-19).

Edinboro University of Pennsylvania

RCI tuition = \$300 per class

Normal tuition = \$966 per class + fees

Gannon University

RCI tuition = \$300 per class

Normal tuition = \$2,265 per class + fees

Mercyhurst University

RCI tuition = \$380 per class

Normal tuition = \$2,625 per class + fees

Discounts:

Parents bear responsibility for tuition and textbook costs. The RCI tuition set by each participating university is discounted significantly from the normal tuition rate set for full time college students. Students taking RCI courses will receive an invoice from IU5 for tuition costs.

Fit College Into Your High School Schedule

Skill Center

8500 Oliver Rd. Erie, PA

- Courses are offered to RCI students through Gannon, Edinboro, and Mercyhurst Universities on Tuesday and Thursday mornings.

Porreco College of Edinboro University

2951 W. 38th St. Erie, PA

- Courses are offered to RCI students through Edinboro University.

Crawford County Career and Tech Center (CCTC)

860 Thurston Rd. Meadville, PA

- Courses are offered to RCI students at CCTC through Edinboro and/or Gannon Universities.

On Campus

Dual enrollment courses are also available on campus at Mercyhurst, Edinboro and Gannon through the regular college course catalog. Courses are offered to RCI students at Edinboro University's Porreco college