

NPS Update

February 24, 2021

Update on in person learning time

- **Recent “new” guidance from CDC and DESE**
- **Current Status**
- **Upcoming Guidance from DESE**
- **Game changers**
- **Logistics**
- **NPS Process moving forward**



CDC Guidance Released Friday, February 12th ([Operational Strategy for K-12 Schools through Phased Mitigation](https://www.cdc.gov/coronavirus/2019-ncov/community/schools-childcare/operation-strategy))

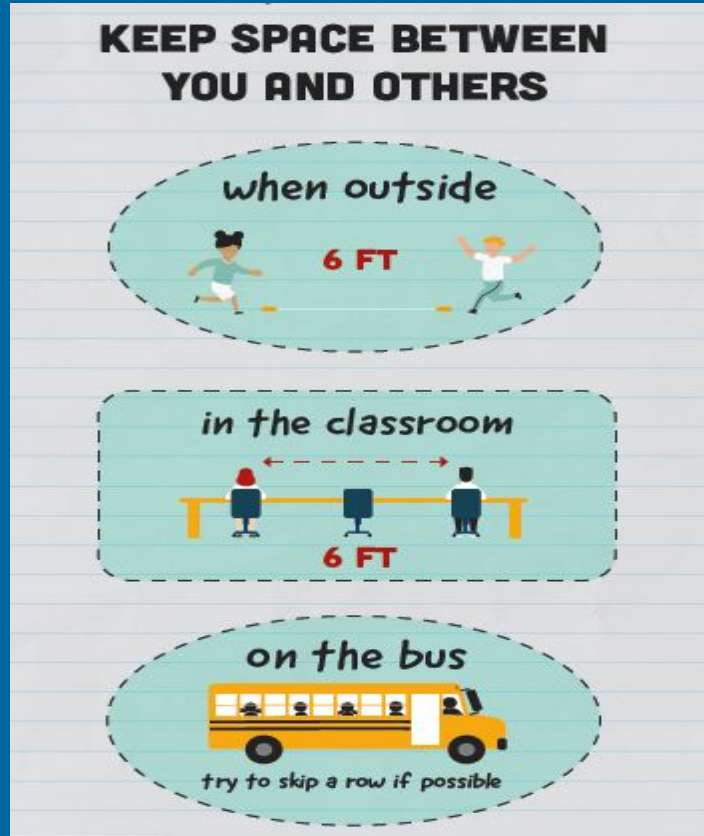
Basic Guidance has not changed. What has changed is the forcefulness of the language and a metric for instructional models:

- Social Distancing 6 feet
- Mask wearing
- Sanitation
- Small groups/ cohorts
- Vaccination and testing

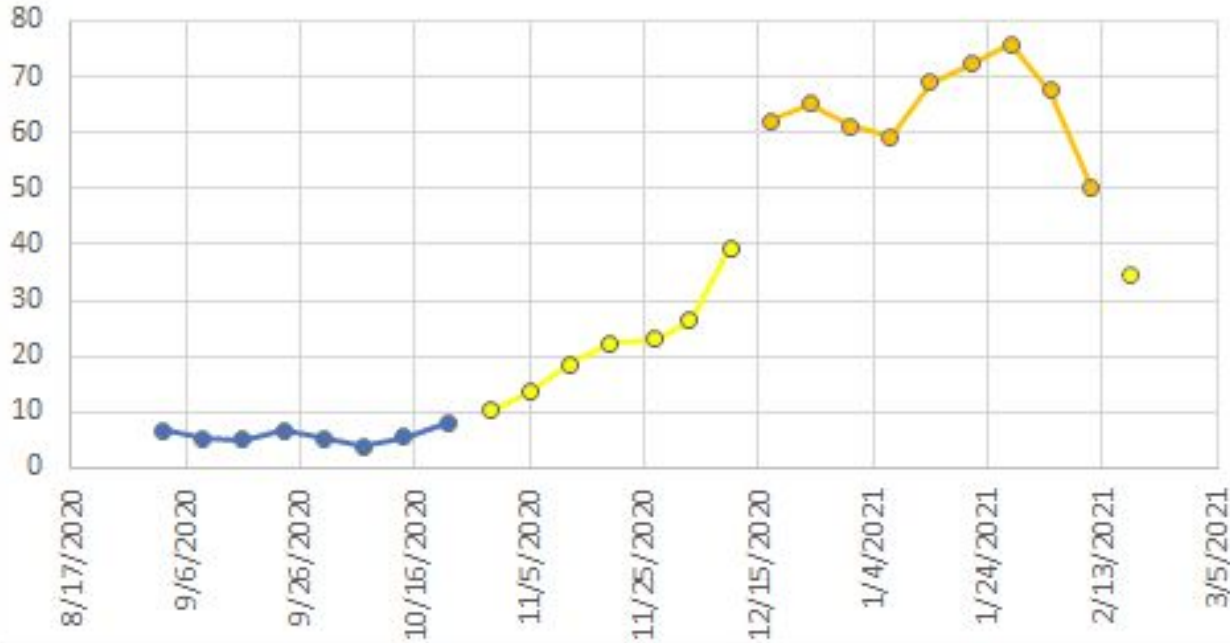
<https://www.cdc.gov/coronavirus/2019-ncov/community/schools-childcare/operation-strategy>



CDC Guidance Released Friday, February 12th ([Operational Strategy for K-12 Schools through Phased Mitigation](#))



Avg. Daily Incidence/100,000 with CDC Colors



Thank you to Myev Bodenhofer for charting the district's incident rates using the CDC system

Low Transmission: Blue	Moderate Transmission Yellow	Substantial Transmission Orange	High Transmission Red
---------------------------	---------------------------------	------------------------------------	--------------------------

All schools: Universal and correct use of masks is required; physical distancing; handwashing and respiratory etiquette; cleaning and maintaining healthy facilities; contact tracing in combination with isolation and quarantine.
 Diagnostic testing²: Symptomatic students, teachers, and staff and close contacts referred for diagnostic testing

K-12 schools open for full in-person instruction Physical distancing of 6 feet or more to the greatest extent possible ³	Elementary schools in hybrid learning mode or reduced attendance ⁴ Physical distancing of 6 feet or more is required		Middle and high schools in virtual only instruction unless they can strictly implement all mitigation strategies, and have few cases; schools that are already open for in-person instruction can remain open, but only if they strictly implement mitigation strategies and have few cases ⁵
Sports and extracurricular activities occur; physical distancing of 6 feet or more to the greatest extent	Sports and extracurricular activities occur with physical distancing of 6 feet or more required	Sports and extracurricular activities occur only if they can be held outdoors, with physical distancing of 6 feet	Sports and extracurricular activities are virtual only



3 If physical distancing of at least 6 feet among all students, teachers, and staff within a class, cohort, or pod is not possible at all times, schools should ensure physical distancing between classes, cohorts, and pods.



DESE Transportation Guidance: Updated Thursday, February 11th

Changes:

- For elementary students, no restriction on seated distance (2 per seat) or on bus capacity if windows are open at least 3 inches.
- For middle and high school students, no restriction on seated distance or on bus capacity, unless in districts with high community prevalence.
- Conflicts with CDC guidance.



NPS has followed the CDC Guidance

- All of this is posted in our opening plan posted in August on our district website.

Teaching models:

- NPS is in top 10% of live teaching time *55 hours over 2 weeks/ vs 35*
- NPS has had little disruption in our school model due to our plans and implementation of mitigation strategies.
- Only 1-2 in school transmissions at this time



Commissioner Riley's announcement to BESE on 2/23:

- Requesting authority to determine when to stop counting hybrid and remote time toward learning hours (to be voted on at BESE March meeting)
- Mentions Elementary, K-5, returning in April full 5 days a week at 3-6 feet apart, following all other mitigation strategies
- Part of a “Broader Plan in March Assuming State Health metrics continue to improve”
- Will include a waiver process
- Remote option still must be offered



Upcoming Guidance

- **DESE facilities and ventilation**
- **State DPH review of CDC metrics. Will there be alignment with CDC's color-coded metric for school models?**
- **Guidance for Extended School Year**
- **When?**



Game Changers

- **Educator Vaccinations (+)**
- **Impact of New Variants (-)**
 - UK - increase in contagiousness- more deadly?
 - South African - More contagious Questionable Vaccine effectiveness
 - California Variant



Moving Forward for NPS:

- **Review Guidance for changes** (In Progress)
- **Examine spacing and capacity** (In Progress)
 - Lunch- No tables
 - Five elementary schools with different building capacities
- **Revisit M.O.U.s and Contracts** (Early March)
 - Unit A, B, Unit 50, Connelly Bus



Moving Forward for NPS

- **Dipstick - Comfort on distance**
 - Soon
- **Survey Parents Mid March**
 - Can we meet model requests??
 - Staffing implications
- **Building set up and furnishings**
 - Storage
 - Increasing space in classrooms
 - Lunch!!!!
- **Impact on Extended Day**
- **Contact tracing and quarantine procedures**
- **Plan for a shift- phased approach**



Closing Thoughts

- **Still many unknowns- planning is difficult but has started.**
- **More disruption in Education- Close contact/ more exposure**
- **Logistics and the difficulty of making a change while in session**
- **Cost/ staffing**
- **Mental Health needs present in all models of education**

