



COMPREHENSIVE PROGRAM REVIEW

INFORMATION SERVICES

MISSION & VISION STATEMENTS

College Mission Statement: *The mission of the Feather River Community College District is to serve a diverse student population with an effective learning environment. The District will accomplish this by offering high quality general education, transfer programs, career and technical degrees and certificates, and extracurricular activities that enhance student development and success. The college will foster interpersonal opportunities and provide unique programs supported by its small size and mountain location. The District will additionally promote regional economic development, broaden international understanding, and encourage life-long learning.*

The Information Services Department provides mission critical computer support and technological infrastructure for the institution. Our role is critical to everything from instructional delivery in the classrooms to providing Banner support to staff members. The efficiency of the campus computers and computer network directly impacts the level of effective service that staff and students receive.

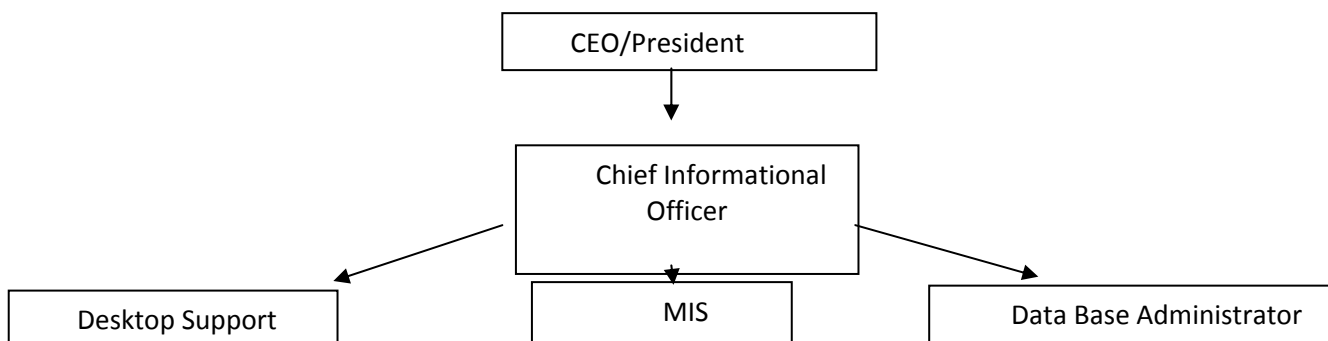
Feather River College's Information Services policy's and action plans are aimed at maintaining and improving the student and staff experience that is provided and supported by the campus computer network and desktop computers. The Feather River College Information Services Department will support and recommend realistic policies that will allow Feather River College to offer modern technological resources while protecting the College's exiting technological assets. Utilizing available resources regionally and nationally the Chief Technical Officer will communicate his findings and recommendations to faculty, students and staff through the Strategic Technology Committee.

SUMMARY OF RESPONSIBILITIES/SERVICES PROVIDED

In a list format provide a brief description of responsibilities/services provided by the program or service area.

1. Support/Upgrade Software in Computer Labs and Staff machines.
2. Repair accessories including printers, scanners and accessibility devices.
3. Wireless Network support, expansion and monitoring.
4. Fiber Optic Network installation, termination and maintenance.
5. Install and manage anti-virus and other critical software updates at the server level.
6. Production Servers - monitor, install upgrades and manage data backups.
7. Audio Visual support, repair, management of equipment.
8. Video Conferencing support and scheduling.
9. Laptop Computer Lab software upgrades, repair and management.(ETS)
10. Data Base management, install upgrades, patches, point releases.
11. Data Base storage management
12. MIS reporting to the Chancellors Office.
13. MIS campus support – instructional office/Student Services.
14. Network switch management and repair
15. Install new computers and setup computer labs
16. Staff Email- manages, support and monitor.
17. Student accounts- setup student network accounts including email and printing
18. Backup and delete terminated staff/student accounts
19. Firewall – maintain updated firewall setting and updates
20. CENIC internet connection maintenance.
21. MIS maintain accurate student databases for reporting.
22. MIS- Run database queries – write and supply scripts to users.
23. Banner- Implement new versions and support end users
24. Develop and recommend equipment replacement plan
25. Hardware Maintenance Contracts- monitor and renew.
26. Library data bases support and maintenance.

STAFFING PATTERNS



VARIABLES AFFECTING STUDENT LEARNING

Describe the ways in which the department/program and its services affect student learning at FRC.

Positive variables that affect student learning:

1. Professional Development to staff- in-house training on new technology.
2. Provide current technology and current operating systems
3. Effective and dependable network
4. Appropriate network bandwidth and resources

Negative variables that affect student learning:

1. Limited equipment and supplies
2. Limited desktop support staff
3. No functional technician staff to interface between end users and hardware support.

RESEARCH AND DATA TOOLS

List data tools utilized and research conducted—surveys of service users, etc.; include professional standards/benchmarks or information from outside agencies, if appropriate.

- LAN Logic monthly Network Monitoring Reports
- Network Security Audit
- Chancellors Network Review/Audit
- Anti-Virus Reports and Monitoring

PROGRAM EFFECTIVENESS

The Desktop Support Specialists is currently staffed at 80% of full time, with the addition of the 62 machines and additional A/v equipment scheduled to be in the new Learning Resource Center it is essential for this position to be increased to 100%. Additionally, the MIS and DBA roles will be absorbing the “Functional Technical” support services as we migrate to Banner8.

Using the monitoring reports that we generate as a gauge , the Feather River College Information Services Department is effective in providing core computer support and network availability. The overall network availability is on average 99.6% with minimal down time.

However Feather River College Campus is developing issues with the age of our desktops and that support for our current operating system will end on 4/18/2014 forcing all of our machines to run Windows 7, currently approximately 148 of our desktops do not have the resources to run Windows 7.

GOALS AND OBJECTIVES FOR THE NEXT THREE YEARS

1. Re-locate the existing server room and Information Services staff to the new Learning Resource Center Building.
2. Install network equipment to enhance the connectivity and reliability of the network.
3. Establish a stable environment for Banner and establish a cycle of installing patches twice a year (October, April) to minimize service disruptions and more stable operating environment.
4. Actively facilitate and execute a schedule of regularly refreshing/upgrading campus work stations to enable faculty and staff to utilize the most current software and applications.
5. Establish a web base service request form for IS and Facilities to enable employees to place service requests and track its progress.
6. Utilize the Strategic Technology Committee in developing a Strategic Technology Master Plan.

RECOMMENDATIONS

- 1) We need to move forward with the plan to refresh the desktops on campus that are at end of life and cannot support Windows 7.
- 2) **Increase Desktop Support to a 100% position.**
- 3) **Seek and apply for grant funding for technology upgrades.**
- 4) **Improve our online web presence**
- 5) **Explore and implement “I-University” to store and distribute our online course and lecture material.**
- 6) **Promote and support professional development opportunities for the IS staff.**
- 7) **Provide additional internet bandwidth and a second internet service route for campus to eliminate the single point of failure.**
- 8) **Integrate the Dorms and Feather River Fitness into the Campus network.**
- 9) **Update the network map.**
- 10) **Tighten up network security measures.**
- 11) **Actively investigate and implement new technology to better serve students and staff.**

APPENDIX

- Staff PC Inventory List

PC Inventory Sheet

Tag #	Serial #	Operating System Number	Owner/Location
33235	BV09D01	XGY83-GT8T6-BW6XT-FDX7R-VY48Q	Angel Quinn
33237	CP09D01	MPM9C-2FM2W-29YH2-BJHFP-BC2KQ	Steve Mooshagian
33245	4X09D01	VXFKW-F7RDT-CPV8F-DHHDC-PVJXY	Tony Warndoff
33251	J909D01	WW6BQ-2KYVP-M9R9D-PF9G9-Q8RMQ	DSPS Receptionist
33362	S1500039	GG28M-87KVQ-6QDTC-DT97V-QKPXW	Nick Boyd
33363	S1500096	CTYJK-XFY3T-84Q9D-BX3K6-RPRVQ	Rick Stock
33364	S1500018	HM7DH-CBK6J-WPDQQ-M9QDR-83C2W	Scott Spero
33365	S1500085	XD8GY-XXPF4-YWYCG-D3X79-9FVKY	Sarah Richie
33367	S1500038	GCD4H-K8MVC-JQ22B-VBRID-8JHHQ	Student Portal in A&R office
33373	S1500112	TGFMR-8J6VP-WT4WB-XWYX7-4BBDT	Jane Daun
33379	S1500084	PCG6J-QHFH7-GVHM-78B7M-QHB36	Career Center Assistant
33386	S1500032	C74BD-YHTJM-DX6KQ-GRBX9-7VXHM	Merle Trueblood
33390	S1500049	VRKHP-D3JPP-FHH7Q-4PD66-KQX4Y	ASB
33391	S1500067	PT67X-YF7T9-MRC99-TB8WK-MFJCD	Instruction Office Student
33394	S1500111	KH46C-V6WHV-6RKXP-C3TBW-D7W9G	Shelley Miller
33395	S1500036	QW823-PG4XJ-JYXJH-MBR2B-8CRQW	Maintenance Shop
33396	S1500109	KTG2J-T29TJ-XW672-2RPD9-JVMD6	Terry Baumgartner
33401	S1500050	BFHM9-MTM38-VQWV4-D3PWK-C4VKM	Tom Simi
33407	S1500047	XG238-72BGX-VGT8M-RWTK9-DWTTQ	
33408	S1500037	RXGYW-M7QRF-D7XGH-QTHPY-Q994Q	Bonnie Smith
33410	S1500065	JWDX9-VQH63-GR8V7-QR2HT-PBWGM	Banner Project Room
33414	S1500068	R3YBM-KHFF2-BBXHJ-R8PBW-PHK8J	Cheryl Patterson
33416	S1500006	KKXXG-8F9QQ-3683B-2RQKC-TJ4XQ	Colleen McKeown
33418	S1500007	WT4VH-BMKH4-D8HVV-TR9WW-9QYBT	Michael Bagley
33420	S1500024	T9Q9D-K9KYQ-KTFPJ-YG233-T3X4M	Terry Baumgartner
33422	S1500113	W3849-6YG47-XPR93-C2726-P4VK6	Karen Paiva
33426	S1500009	RK3HG-GCW8K-4W7HV-HT8HT-XMKFT	Cindy Hall
33437	S1500061	DVQQ4-YPDRY-4KXGG-P2M64-34JKG	Larry Newman
33457	S1500082	KF6VT-DJVV7-96RBM-PGQQR-YQMY8	Randy Rick
33458	S1500086	KHTC6-WWFJ6-T9JG6-XW4RK-9FTRG	DSPS Dragon
33460	S1500081	VGJF7-JX693-77PY2-XR6T7-DP23Y	Merle Trueblood @ FRFR
33462	S1500033	H24C6-PMD3H-9GYV6-CH8JF-PKY4J	Juan Nunez
33467	S1500090	F4RRH-TGQD8-JFFDF-4BHWJ-BTY7Q	Richard Mohawk
33473	S1500078	VX27V-66VJC-2VPT9-QTVM2-J3CY6	John Gay
33512	S1800018	CR78W-WTKMR-G7H27-GR879-H7T3Q	
33531	2010170002	XDV78-V469T-9HFTM-8WGMF-4FTYJ	
33534	2010835001	RHB8R-9WXGP-9HXV6-MYRQG-M6Q4M	Banner Project Room
33542	2021779001	PDTMP-4YFMD-RKCJY-43KQF-T8W68	Geoffrey Quinsey
33552	2021762002	BM7F4-PXB6H-MT3CK-WJQ9V-TJXMB	Rand Groh
33553	2021762003	G6DF8-YJQTH-KXK8B-MJWDB-H7V8G	Jeanette Plankey
33554	2021762004	TGQGX-P68W9-HKQD2-PPCYX-6QBWD	Jason Wharton
33599	009979	MXXM7-X3322-FP447-2MWYW-B6Q2Q	Josh Taylor
33600	009984	BHVG7-P3TDT-DPV39-8KQXC-F78CD	H/R Assistant
33601	009974	R37F2-6GM8K-B6WDX-K2WRV-8RT38	Banner Project Room
33602	010792	V87K6-JPBR8-Q6MXH-GRKCB-XM69J	
33603	010790	WM3JT-B48BR-YP3B3-BPRK-MQ8VT	Vikki Dedeker-Freeman
33604	011111	D44HY-7CHG6-PYCY2-QQ6HF-WPGDB	Financial Aid Director
33605	009976	RRDR3-2RM9F-DB72B-J3CV3-MMWJ6	Eva Rocke

33606	009983	JK8CQ-MFCY9-4MPKG-TC9Y4-VWHPM	Mick Presnell
33608	009985	RT2JY-VMJQR-KDRY9-M8HM2-GY3QD	Tama Bolton
33609	009977	DRBFR-HTY8M-93WW2-4CFGR-T4HYM	Bryon Hughes
33610	011113	WHVG9-7B83X-48T8M-4XTR9-8YJ8Y	Laurie Stockton
33611	009980	M69KC-DQFP9-JXW3C-V348F-B8YWG	Jerry Hoover
33612	010791	TBYHG-8769P-HKXKQ-GB9WD-H9YTT	Lori Bergum
33613	009981	B3XRH-3T49H-RWJPC-PQWHG-FBRKM	Michelle Fulton
33615	2042859003	JT9CT-G9MRP-KY7JV-69TDR-2DBC6	Katie Desmond
33652	2075416002	TRQCT-PX7PD-DQYB7-TC6FY-8WM78	Sally Donovan
33653	560501	GD6KF-X724H-3763X-QTXKC-Q9MKM	Dianne Lipscomb
33654	560502	F4DHT-VFPG7-4CBTR-VX2BH-XKYTG	Adam Ponikvar
33655	560503	VGFQP-2F34C-8BJ6W-Q48XQ-P7J4T	Rebecca Rickert
33656	560504	RMMRH-6JHBM-WPWDQ-H28PJ-8FH2J	Student Employee
33657	560505	Q9TKP-VRG9K-QGFJ2-8YMF6M-GF6P6	Eric Small
33658	560506	JJQG8-J9F8C-MCX37-4YYMY-Y4H6D	Sally Donovan
33659	560507	XCP9C-627TV-6KC8D-6VR2J-8FHD6	Bethany Henry
33660	560508	M936M-6B9H4-3XBTR-FQF9Q-P7KR6	Audrey Peters
33661	560509	JXMDH-THTB2-HX8RR-QM7PR-8HXC3	Maureen McPhee
33662	560510	CJV77-7Y9GD-7MY73-J2DF9-Q3XTY	Tamera Cline
33664	560512	PMMFG-VRD9-J7DKR-J62BR-9BV2D	Scott Koeller
33667	560515	MKGV6-2QQMG-GMQJR-HG76P-GXY6M	Dan Smith
33689	363669-02	HCKMQ-FCXK7-R4MPB-PW2HX-23623	Michael Haydon
33690	2086003002	HQRM2-699MW-D2Y9P-DP3HD-RMY9J	Joan Parkin
33691	2086003003	MCXXY-PB9TF-VF6C9-RM46Y-9QXP6	Saylor Fleet
33708	3010170001	M76G9-DP7T2-WV2DD-2F33J-QYBH3	Beth Reid
33709	3010170002	M6VT9-9CTMC-R7477-813V2-PDWFG	
33712	3010523001	HFJBV-GD9M8-QH8WM-MBJ4J-4824J	
33713	3010522001	HFJXT-494M3-8VP3W-BMD4M-PX28T	Todd Iggacson
33715	3021424001	JBHD2-87BY4-6R9KX-H7G3P-C7CR6	Gina Rogers
33735	GBPWW21	H8GRJ-KGHBQ-WQCMQ-RVRHW-9X3Y8	Darla DeRuiter
33789	363119-1	HTRYT-P8QJX-8G9GD-PM4M2-8X4MW	Jose Rico
33790	363119-2	C9TQT-RQHV9-96HHH-VGPQK-MH7H8	Shirley Kossow
33791	363119-3	J6HQF-DG38C-XM4J7-CYJYX-KQ3RD	Kandi Whetley
33792	363119-4	D8827-HXG72-6P23P-P47C8-FBJFD	Gretchen Baumgartner
33798	59GZ241	FTQVM-7C84F-673T9-4QF9F-GBM8J	TRIO ETS Program
33812	363608-01	RBK8K-Q2X7P-MRXXV-B7B9Y-RQH4W	Linda Vaughn
33813	363608-02	MCF2V-TYPJ3-FH6JP-J6QQG-8JG3B	George McNulty
33814	6RCY441	J2K79-K6R39-C7V7P-Q7JPJ-9RHV8	Jane Daun
33817	4QDJ741	QFC6H-68F6T-G7WP9-B6PJJ-FQJ86	Jane Daun
33818	DPDJ741	GCBX4-T69F8-9XH23-26ZM4-H7VHQ	Jane Daun
000775	C25371-001	KXBPT-4DMDM-TJB8Y-J2MH3-X3BQG	
000778	C25371-002	F6TXR-RGKTV-G2BKB-7FPVG-9CQ6G	SES Lab
000785	90804-01	JJG9H-QF4H7-WW324-M6KGC-RKPH6	A&R/Fin'l Aid Student Portal
000786	90804-02	HVHTW-7R7JJ-KMTTT-VDK2W-JFHCW	
000787	90804-03	XBWDM-3YR8H-TXJMW-WDYT9-7XM4T	A&R/Fin'l Aid Student Portal
000788	90804-04	D8JTD-W7D4P-WFWXJ-3PJ8B-PR4QJ	Lisa Kelly
000789	90804-05	DBQMB-BR7J3-WGQDQ-X2MVJ-F82HM	A&R/Fin'l Aid Student Portal
000790	90804-06	GVKK6-MHXJQ-HY8K7-4XWKF-9Y2Q6	A&R/Fin'l Aid Student Portal
000791	90804-07	QD9K2-Q97FY-VFKHF-B37HJ-8KBCY	Leslie Mikesell
000792	90804-08	J2BYC-3XVTY-D9WBP-6CPMK-QV7TQ	A&R/Fin'l Aid Student Portal
000793	90804-09	BPW6F-YH3BV-CVYFF-BY8PX-KQBYY	A&R/Fin'l Aid Student Portal
000794	90804-10	GFM7C-RWHQ6-H7V8T-CWV7Q-DX6QG	A&R/Fin'l Aid Student Portal

000827	9Q76Y61	WX8W7-QG XK4-RYVXG-YVR37-83KCW	MPB220 Classroom
000843	4GCS081	HK2X2-YD47W-GBXVP-3TGRX-W9VBQ	Associate Faculty Computer
000844	7GCS081	V46T9-8R926-PB9M7-TB86M-26J4B	Associate Faculty Computer
000869	DGCS081	RKBDJ-G3BJ7-J8JGX-4QKQ3-J9VBW	Dottie Arcangeli
000870	HGCS081	RYDJV-8TP93-BWYWW-BMVMD-VKH76	Library Catalog Computer
000871	BGCS081	HC96W-8KQPQ-VFP9B-KTR3T-3H3MY	Library Circulation Computer
000878	4WJ4M81	JFR3C-4Y2Q8-92VCT-K3B3B-PK6Q8	Podium in Science 104
000879	9VJ4M81	RWF8C-PQ2FK-MHYQM-B9XJX-JRDXM	Podium in Biology Lab 107
33398*	S1500101	KRG8X-TPQ43-6T22B-H7K4G-T9P4W	Chris Connell
33423*	S1500114	TXKYC-8DWW6-J4F2F-RCJGH-B46QW	Jason Gay
33427*	S1500004	JFPK3-27V48-8VBJV-CJVRM-R389J	Connie Litz
33429*	S1500058	GBHBF-6K844-V8J8J-QPB6P-H9DXW	Switchboard
33430*	S1500012	XDPVR-8W4FQ-GJ2P7-RXGRX-WQ9BJ	Milan Vujicic
33434*	S1500059	KPYHJ-VR4GW-3KF3B-WR4Q7-QKP6W	Julie Neill
33441*	S1500064	BJVT8-9WXWV-44PTC-392QC-8VKFDM	Mike Welser
33447*	S1500001	FJ3TV-QRCJ3-QKYM3-WV6W4-Q7W8W	Shelley Morrison
33448*	S1500056	KKP8M-QM64X-TY3XC-2QY2X-8MWBM	Loaner for Tony
33449*	S1500005	QQ427-RQJTH-TCJJV-PRC63-96FMG	Blake Kangas
33454*	S1500062	HFJH9-T68JH-2C94G-3G3C4-DGG993	John Burns
33461*	S1500073	TQHG4-CFRCQ-C2QW7-FMYMB-F7MCY	Marilyn Shaw
33465*	S1500083	MRFTG-2P6HG-2WJKT-MR2GD-X8TP8	Maria Wood
33471*	S1500034	GMMBV-9PYVR-Q4G9M-TW983-8JHGG	Larry Holcomb
33614*	2042859001	JT7WD-6HMB9-BJT9R-D382G-DVY6B	Banner Project Room
33616*	2042859002	JQW9C-DJ9D4-K84H3-XYGJG-G8V98	Darrel Jury
33645*	2053883001	GVTGW-XCQMT-HMB38-MKY23-R6DCT	Connie Garrish
33646*	2054231001	F8HPK-KX7XD-3KF9M-HTDMQ-Q2FKW	Zack Parks
001189	C4Z2VL1	7RJG8-RF88P-BWCXW-TXCWV-BQHM3	Cindy Hall
002033	SRNB7L1	7RV23-9DWDT-F7KFW-CWPHH-BRQVJ	Tony Warndoff
002034	4RNB7L1	9B9HR-GGH6M-YM889-G9W8C-6QC2D	Zack Parks
33368*	S1500087	GRCYJ-VC37T-RDCJ8-DJPP2-TJ4RB	Haley White
33377*	S1500094	D3H2D-3C4G7-QKQ9T-HPJQT-22FVT	Erin Roth
33378*	S1500044	RKQBG-GKVTW-8H7RF-GYVP3-VVXB3	DSPS Front Desk
33382*	S1500105	K93HH-MWC47-78T46-2Y2GX-FKJB3	
33392*	S1500002	XPW7G-C6GXR-YRCXV-BBJAC-D4JCG	Josh Taylor
001176	GWMX0L1	PMDP8-FGXH8-R33XX-6CGQD-9TVK8	Virginia Jaquez
001165	R90RGZE	TQJ32-K784Q-9XGDQ-Q3PXP-2B424	Jose Rico
001170	C4WLDK1	PMDP8-FGXH8-R33XX-6CGQD-9TVK8	Allied Health Office
001148	G6FJJH1		Malia Bridges
001153	8H4RLF1	7RFD2-9TKDM-3MKJM-TKVYY-9PRHX	Michelle Fulton
001101	94H8XF1	GYHGT-VQ4X8-W3MQ3-G6CYV-3R8CJ	Equine Receptionist
001093	5JKPKF1	BX6PP-PMJTX-FC7VJ-47HMX-V47BB	Valerie Grammer
001095	6Q14MF1	G6RW6-4D2WH-F6CQV-DVMTV-KRJCT	Virginia Jaquez
001081	3V FY9F1	M2X3T-G77HR-8QBT3-RCMQ9-7QRGM	Valerie Grammer
001082	7NZBDF1	VRMXR-4H7VH-9F6CB-9V7RX-F9898	Linda Moore
001078	8C2G1F1	VRPFX-JQYTD-4792P-KBFXD-JFHGG	Chester Chorus
001070	BRS9LD1	VCVRJ-FT8DW-9W9RH-HJ2VT-PB66W	Bruce Baldwin
001075	J1SGWD1	XBWQF-XQ2Q3-RX9BB-QGJMP-JKC28	Judith Andrews
000980	CWKL9C1	F39DB-BWVYY-KXPWF-R4RC9-F9TDY	Geoffrey Quinsey
000978	9WKL9C1	J6RY7-FPGB9-9TRYV-B7RMD-X2V7J	Jamie Cannon
000944	75K61C1	BK43C-9CDWD-4GVCY-JTF8T-346RD	Jim Scoubes
000945	F5K61C1	VX7DG-237QG-HXPXY-YQK9X-D8HK8	nComputing System
000946	95K61C1	G6GFJ-T89R8-Q7GP2-JXBT4-GDYBJ	

000979	FWKL9C1	PD3HW-XR84D-9C94M-W3BPY-6JW33	Katie Thompson
000981	HWKL9C1	R2WQJ-B3K3C-JPMPG-BHX6J-RPJ36	Tom Davis
000982	BXWCBC1	KFX86-JM4GC-Q2M46-PJYDY-YYGKT	Podium in Physics Lab 101
000992	HP90KC1	BCPTP-WD79F-48T9T-4XTXR-6MGVJ	Ravi Pinjala
000998	9R3HQC1	GQWXG-RV4TD-PVPPF-P66JH-DPKT8	Jodi Beynon
001040	5N14BD1	P3F3-QTHHX-P8C7W-G8Q4K-TRDHT	Pat Buckner
001041	7QRY9D1	RDVV2-TPH74-RQ2JR-4JB7H-W9FC8	Allied Health Podium
001067	7RS9LD1	F32XW-XBHJ6-C9YFD-MG96Y-W9DG3	Terrie Rose-Boehme
001068	5RS9LD1	K9JCH-XPMY4-VFGXY-K67C9-KMV3G	Danielle Westmoreland
001069	9RS9LD1	VYF8X-2RWDM-37VBB-V6GXJ-JC3GY	Marci Lang
001076	G9N3YD1	PCRT6-GM3PP-9R2V2-37Y88-YQKYT	Tom Heaney
001077	3MS3OF1	WP38B-3WXT7-9CRMX-MKK3J-3F23M	Darla DeRuiter
001079	6PF33F1	JGMJJ-4FF73-TB79M-CKYGT-GJY98	Anna Thompson
001092	HNPMJF1	QCMQY-46XMJ-D9XR2-HQ9X4-7KC6T	Learning Center Lab
001097	54H8XF1	HM3FV-4WMFM-H39QM-BCWGB-2WWCD	Russell Reid
001098	74H8XF1	TXCD4-KPK6P-KPYKG-BP99K-RV946	Chuck Mills
001099	44H8XF1	KQTY6-MP96Y-PQYRG-WDXXC-QG4V8	Jesse Segura
001100	34H8XF1	F7R47-77HBQ-DDY6P-RRFK9-4RXFG	Crystal Anderson
001126	1RXDZF1	RVGX4-99426-B8KG7-D4FF3-YKQCQSES	Lab
001158	7CGG5J1	6F2T9-D2YQW-TCT3C-89HGF-64HR4	Discover in CTC
001161	CYCX5J1	9BBTF-3Q69C-HB9WV-YJQPR-QVCC7	Allied Health Lab
001162	CXDC5J1	7VWJR-BFWVC-4BHVK-RMDMB-PVP2Y	Allied Health Lab
001164	H6505J1	V6PFT-8BV76-MQK3H-Y74D3-X8CKV	Mick Presnell
001172	9TSC4K1	6KXRR-G4WKF-VQ2QT-QYM84-J2WC9	TRIO - ETS Program
001173	FVSC4K1	BC993-8X4P2-M47JF-69WGH-DXTWG	Gina Rogers
001175	CMV8WK1	YC2FX-BXPVQ-F3PXK-X28F7-FVYY7	Audrey Peters
001177	56ZN1L1	VKDVK-V4HGQ-JVKXQ-GVD2G-K9W6M	Shane DeMiglio
001178	17ZN1L1	6Q7YQ-2YWYH-RF8P6-CDQTC-TWQTX	Carol Bernard
001179	77ZN1L1	2RC3R-V27XY-B6CY9-8B2VR-DV677	Michelle Petroelje
001180	G6ZN1L1	HMQKT-GK2XG-K3Y8Q-X92T4-FK6VM	Louise Biggs
001184	5MRC3M1	HWRKJ-B29XY-V46WY-B6WDM-9K6XF	Lori Bergum
001185	DLRC3M1	376Q6-HRC7Q-8JXX2-J6BPX-9RD9M	Gretchen Baumgartner
001186	6MRC3M1	49K69-XDWCJ-MD3WC-9FTC9-4DYG3	Beth Reid
001187	3MRC3M1	XBFPF-R3XKQ-HBKDJ-CVWDK-WYWXP	Josh White
33405*	S1500102	FPBJJ-CCK83-7JRB2-WXQ3X-XH8KM	Chem Lab (08)
33424*	S1500028	JKT69-2TJ62-QXFGV-MGC6Y-7JTKM	
33466*	S1500091	CBHVV-YT4JW-MV9V6-86TTM-Q999G	Jim Scoubes
33511*	S1800001	K6YQK-WPCK6-4C6K4-GXY46-TDBK6	
33513*	S1800019	CQVPD-73G8B-24CF7-BHD8D-P28TM	
33514*	S1800002	CQWYM-X98X6-MP6T8-7B4H2-2F3KG	
33530*	2010170001	JJMD7-KR8HJ-VRYK7-KT337-GXRGW	ETS Advisors
33532*	2010170003	JK2KT-THKJQ-86D2Y-2B3GR-XTHDM	Library DVD Viewing
33538*	363669-01	K2V44-GP2M4-WYYPT-4D324-6GYTB	Josh White
33551*	2021762001	F779K-DTB32-3TYQB-32D9V-TJXK8	
33384*	S1500066	FBPCH-XVKP9-VHDDW-78638-RWHH3	Danielle Westmoreland
002035	6RNB7L1	6B66W-FGXYP-FXFYK-6K3GR-HJ376	Amy Schultz
001210	5SH1FN1	JX39Y-X3WTM-Y8PYP-29RV8-KDRJP	Brian Murphy