



COMPREHENSIVE PROGRAM REVIEW

FACILITIES/SAFETY

MISSION & VISION STATEMENTS

College Mission Statement: *The mission of the Feather River Community College District is to serve a diverse student population with an effective learning environment. The District will accomplish this by offering high quality general education, transfer programs, career and technical degrees and certificates, and extracurricular activities that enhance student development and success. The college will foster interpersonal opportunities and provide unique programs supported by its small size and mountain location. The District will additionally promote regional economic development, broaden international understanding, and encourage life-long learning.*

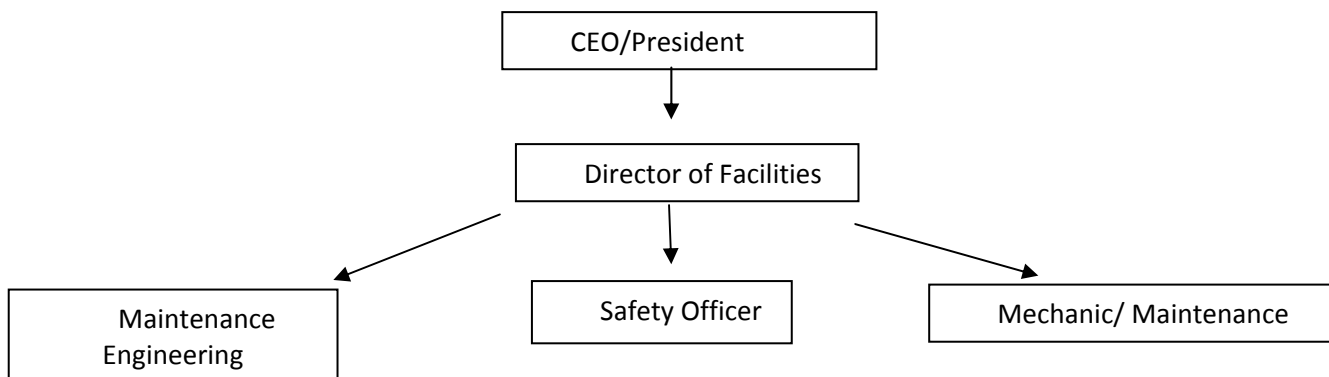
Because the safety of our employees and students is important to us, Feather River College has established a safety program. The health and well being of every employee, student, visitor and resident near Feather River College facilities is of vital importance. The active participation of Feather River College, all of its employees and the communities around it are necessary to make the occupational health and safety program a success.

Feather River College's policy in this area is aimed at preventing an employee, visitor, customer or person residing or working near Feather River Community College Facilities from being subjected to any unusual health or safety risk. Feather River Community College shall establish positive and realistic policies, based on past experience and research developments, to prevent unreasonable health and safety risks. Utilizing available resources such as the Plumas County Health Department and other state and federal agencies the safety officer will communicate his findings and recommendations to supervisors, instructors, staff and students.

SUMMARY OF RESPONSIBILITIES/SERVICES PROVIDED BY FACILITIES/SAFETY

1. Alarms Systems-maintain and monitor intrusion, fire and temperature rise systems
2. Fire Extinguishers-maintain and monitor extinguishers and extinguisher systems
3. Fire Sprinkler systems-maintain and monitor building sprinkler systems
4. Manage Small Water Systems that are fed by two ground water wells.
5. Van Driver Training Program-provide defense driving classes for non-commercial licensee
6. Injury Illness Prevention Plan-monitor CAL-OSHA mandated program
7. Hazardous Communication Program-monitor CAL-OSHA mandated program
8. Chemical Hygiene Program-maintain and coordinate with Quincy Fire Department
9. Storage Tank Monitoring Program-monitor all fuel storage tank compliance programs
10. Pressure Vessel Inspection Program-monitor and maintain all propane tanks and air tanks
11. Elevator inspection Program-monitor and maintain elevator
12. Air Quality Monitoring Program-monitor air quality issues for staff and students
13. Bloodborne Pathogens Program-monitor and provide training for new employees
14. DOT Drug and Alcohol Program-monitor commercial driver DOT testing program
15. California Hiway Patrol Terminal Inspection Program-maintain inspection records on busses
16. Emergency Preparedness-provide training to staff and participate on county level as representatives
17. Campus Crime Survey-maintain records provide annual reporting to Department of Education
18. Tractor Operator Training-provide training to student and staff as required
19. Campus Safety Committee-oversees campus safety and security
20. Campus Sexual Assault Committee-oversee campus issues and maintains Clery Act compliance
21. ADA Compliance-monitor access issues
22. Campus Security-monitor campus security and interface with Plumas County Sheriff Department
23. Defibrillator Monitoring
24. Hazardous Tree Inspection
25. Nixle Notification System

STAFFING PATTERNS



VARIABLES AFFECTING STUDENT LEARNING

Describe the ways in which the department/program and its services affect student learning at FRC.

Positive variables that affect student learning:

1. Professional Development to staff
2. Low instructor to student training class size
3. Compliance program provide safety umbrella

Negative variables that affect student learning:

1. Limited equipment and supplies
2. Limited inspections

RESEARCH AND DATA TOOLS

List data tools utilized and research conducted—surveys of service users, etc.; include professional standards/benchmarks or information from outside agencies, if appropriate.

- Safety Inspection by Joint ASFRC Safety Committee
- Keenan & Associates Inspections
- Cal/OSHA; Labor Code Sections 6300 et seq; Title 8, Section 3203;
- Code of Civil Procedure Section 527.8;
- Penal Code Sections 273.6; 626.9; 626.10; and 12021,
- Education Code 67380(a)(4)
- Title 13, California Code of Regulations, Division 1, Chapter 1
- Penal Code 290 and 290.01; 34 CFR 668;
- Campus Sex Crimes Prevention Act 42 U.S.C. § 14071j; 20 U.S.C. § 1092(f)(1)(I); 20 U.S.C. § 1232g(b)(7)(A)
- 49 CFR Part 40

PROGRAM EFFECTIVENESS

Using the matrix of the California Community College Risk Assessment as a gauge, Feather River College Safety program is effective. The matrix looks at the incident in the past as a measuring method. Feather River College has had limited exposures in the past.

Another measure of effectiveness is lost time injuries. Feather River College had no loss time injuries last year.

However Feather River College Campus is developing issues as the campus ages and as other Facilities come under the college's control.

GOALS AND OBJECTIVES FOR THE NEXT THREE YEARS

Goal for the safety programs at Feather River College is insure the campus facilities are a safe and secure environment for all to enjoy, be it for student, staff or visitors.

1. To promote this a major objective is to integrate Residence Halls and Feather River Fitness into current safety programs.
2. Another objective is to continue to participate at the county level as part of the Emergency preparedness team. A goal will be continue facilitating the Emergency Preparedness Summit.
3. A third objective is to continue the partnership with Keenan & Associates our insurance carrier to assist in providing body mechanics training, job safety analysis, and other preventive services which may help staff members work safer, smarter, and avoid injury. The goal for this objective would be integrate computer based training into the workplace.
4. A fourth objective is to continue to develop a detailed Emergency Action Plan that is compliant with SEMS/NIMS requirements.

RECOMMENDATIONS BY RESPONSIBILITIES /SERVICES PROVIDED

#1 Finish upgrades to Fire alarms systems. Install system at Residence Hall.

- a) Learning Center no audible alarm or working pull station (wires needed to main alarm control)
- b) Building #1 no audible alarms working(wires from main alarm control to building audible alarms needed)
- c) Building #2 hard to hear audible alarms in business office and Human Resource office. (additional audible alarms needed)
- d) Campus center no audible alarms sounded and pull station did not work(wires needed between main alarm control and campus center—4wires)
- e) MPB outside audible alarm did not work and audible alarm hard to hear in 220.—(Inspect audible alarms—install an alarm control in utility closet).
- f) Child Development Center audible alarms chattered-(inspect transformer connection, install an alarm control in utility closet)
- g) Equine Center no pull-stations or audible alarms.(total system needed,)
- h) Vocational Ed Building no audible alarms sounded. (Add system to Science building system)
- i) Maintenance Building no Audible Alarms(inspect system and add to intrusion alarm control)

#2 Finish replacing out dated fire extinguishes on campus (year four of five year change out plan)

#3 Repair broken water line at MPB that feeds sprinkler system when construction trailer removed.

#4 Water System

- a) Install a new chlorination system at both drinking water wells.
- b) Continue mandated testing programs.
- c) Continue program to inspect motor and wells
- d) Continue cross connection inspection
- e) Continue professional growth training for licensees.

#5 Upgrade booklets and video used in van driver course.

#8 Coordinate sweeps with Lab instructors of outdated chemicals used in classes

- #9 Acquire extra containment booms and pillows for use case of fuel leaks
- #10 Schedule inspections of new propane tanks
- #11 Change out hydraulic valves on elevator control system in MPB
- #14 Continue mandated DOT testing programs for all commercial drivers
- #16 Schedule training for new employees and to upgrade existing employees on SEMS/NIMS
- #21 ADA automatic doors for general access area (President Office, Admission and Records)
- #22 Acquire additional cameras needed on main campus to interface with residence hall security system
- #23 Schedule additional CPR/defibrillator training sessions, Order Replacement Batteries
- #24 Schedule hazardous tree inspections of Residence Halls. Upgrade pruning equipment. Acquire additional personnel protective equipment

APPENDIX

Fire Drill Evaluation

Feather River Campus Fire Drill

November 30, 2010

Starting Time 10:35 am

- 1) Evacuation Times were 5-7 minutes for most of Campus. Campus Center Student lounge time was longer. Staff and student participation was at 100%
- 2) Safety-Student was asleep on the couch with ear-buds speakers in place. Student was waken by another student five plus minutes into evacuation and got footwear back on and proceeded to leave promptly. (Potential hazard—certain area should be sweep if student can be resting).
- 3) Response time:
 - a) Quincy Fire Department-Staged 20 minutes early
 - b) Plumas County Sheriff non-participant for event (decision made in preplanning meeting by Sgt. Todd Johns and Safety committee)
- 4) Effectiveness of Evacuation procedures
 - a) Training—More training needed
 - b) Routes and exits—Bottle neck area by flag pole??
- 5) Procedural deficiencies-
 - a) Procedure for resetting science building control missing
 - b) Procedure missing for resetting main campus control
- 6) Recommendations for improvement of procedures
 - a) Include testing of radios to be used
- 7) Recommendation for alteration of Facilities
 - a) Extent trail west of Room 239 to green
- 8) Recommendations for revising procedures that impact other departments
 - a) Nixle system did not reach all individual who thought that they were signed up. Make sure individual sign up for an FRC account.
 - b) Phone paging volume was low at receiving phones. Check Volume control
- 9) Non-compliant Areas
 - a) Learning Center no audible alarm or working pull station (wires needed to main alarm control)
 - b) Building #1 no audible alarms working(wires from main alarm control to building audible alarms needed)
 - c) Building #2 hard to hear audible alarms in business office and Human Resource office. (additional audible alarms needed)
 - d) Campus center no audible alarms sounded and pull station did not work(wires needed between main alarm control and campus center—4wires)
 - e) MPB outside audible alarm did not work and audible alarm hard to hear in 220.—(Inspect audible alarms—install an alarm control in utility closet).
 - f) Child Development Center audible alarms chattered-(inspect transformer connection, install an alarm control in utility closet)
 - g) Equine Center no pull-stations or audible alarms.(total system needed,)

- h) Vocational Ed Building no audible alarms sounded. (Add system to Science building system)
 - i) Maintenance Building no Audible Alarms(inspect system and add to intrusion alarm control)
- 10) Department or individual who have caused no-compliance-None