

# Local School Council Principal's Report

January 21, 2021



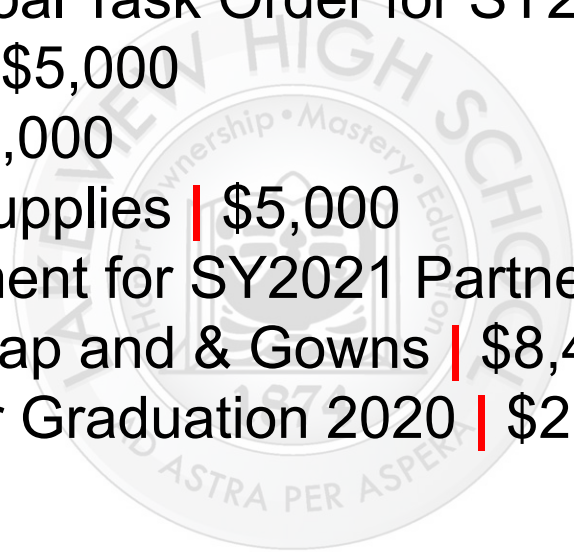
# Principal's Report





# Approvals

- Supplement OneGoal Task Order for SY2021 | \$120
- Science Supplies | \$5,000
- Music supplies | \$3,000
- World Language Supplies | \$5,000
- NCS Second Payment for SY2021 Partner Fee | \$5,000
- Graduation 2020 Cap and Gowns | \$8,478
- Diploma Covers for Graduation 2020 | \$2,864.33



# Budget Transfers



FROM Line	Amount	TO Line	Purpose
28	\$ 120.00	28	Supplement OneGoal Task Order for SY2021
15	\$ 3,000.00	8	Science Supplies
28	\$ 1,300.00	8	Music supplies
16	\$ 5,000.00	8	World Language Supplies
16	\$ 5,000.00	28	NCS Second Payment for SY2021 Partner Fee
16	\$ 8,478.00	8	Graduation 2020 Cap and & Gowns
16	\$ 2,864.33	8	Diploma Covers for Graduation 2020



# Fundraisers

- n/a



# Overall Budget Picture



Original Budget	Total Cost	FTE
Total Personnel Expenses	\$14,303,743	144.00
Total Non Personnel Expenses	\$63,379	-

Source	Fund	Amount
Salary Lines	115	\$97,583.94
Benefit Lines	115	\$102,242.62
Substitute Salary & Benefits*	115	\$86,288.76
Buckets	115	\$5,959.41
Salary Lines	332	-\$5,863.48
Benefit Lines	332	\$249.78
Substitute Salary & Benefits *	332	\$4,032.48
Non-Payroll Lines	115	\$ 198,965.90
<b>TOTAL</b>		<b>\$ 489,459.41</b>

Source	Fund	Amount
124 Budget Lines*	124	\$ 29,388.83
Student Fees	124	\$ 12,400.82
Rental Income	124	\$ 4,556.53
Other Fees (IDs, Transcripts, Credit Recovery)	124	\$ 15,865.01
Gifts & Grants	124	\$ 2,802.47
<b>TOTAL</b>		<b>\$ 65,013.66</b>

# Winning Wildcats



- Chealsea R. **POSSE** (full ride) to Middlebury



# Construction Updates



- Main Office floor is done!
- Main Office painting is set to begin





# Remote Learning

## “Gambattane Goals”

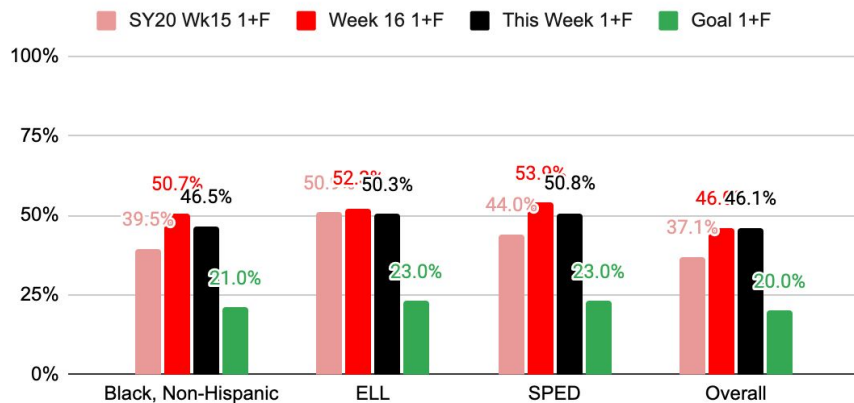


- Increase student success: reduce by half the number of students who are failing 1 course, and who are getting 4+ D's/F's, in the following groups: Black, EL, DL (chosen because they have the highest current failure rates)
  - Black students goal: < 21% failing 1 course, < 16% with 4+ D's/F's
  - EL students goal: < 23% failing 1 course, < 16% with 4+ D's/F's
  - DL students goal: < 24% failing 1 course, < 17% with 4+ D's/F's
- Ensure senior postsecondary transition
  - 100% of seniors have concrete postsecondary plan by May (LPS Deadline)
  - 75% of all seniors and of Black and Latinx seniors have submitted FAFSA (or opted out) by February 28 (MAP grant closing)

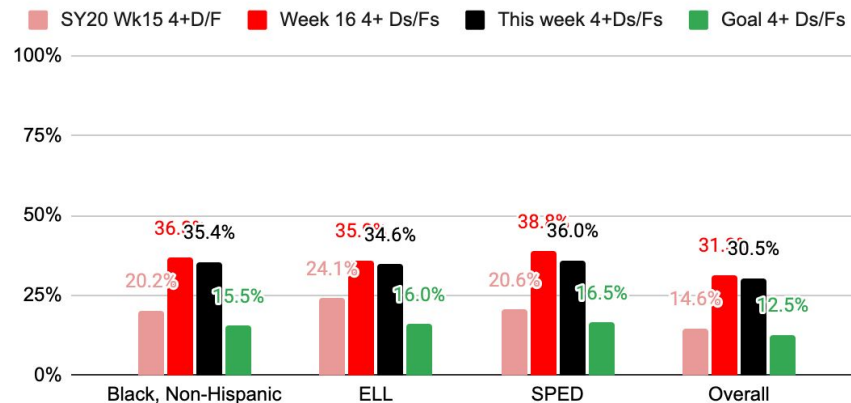
# Current Failure Rates



Gambattane Goals: Week 17 Students with 1 or more F's



Gambattane Goals: Week 17 Students with 4+ D's/F's



# Increasing Success Actions



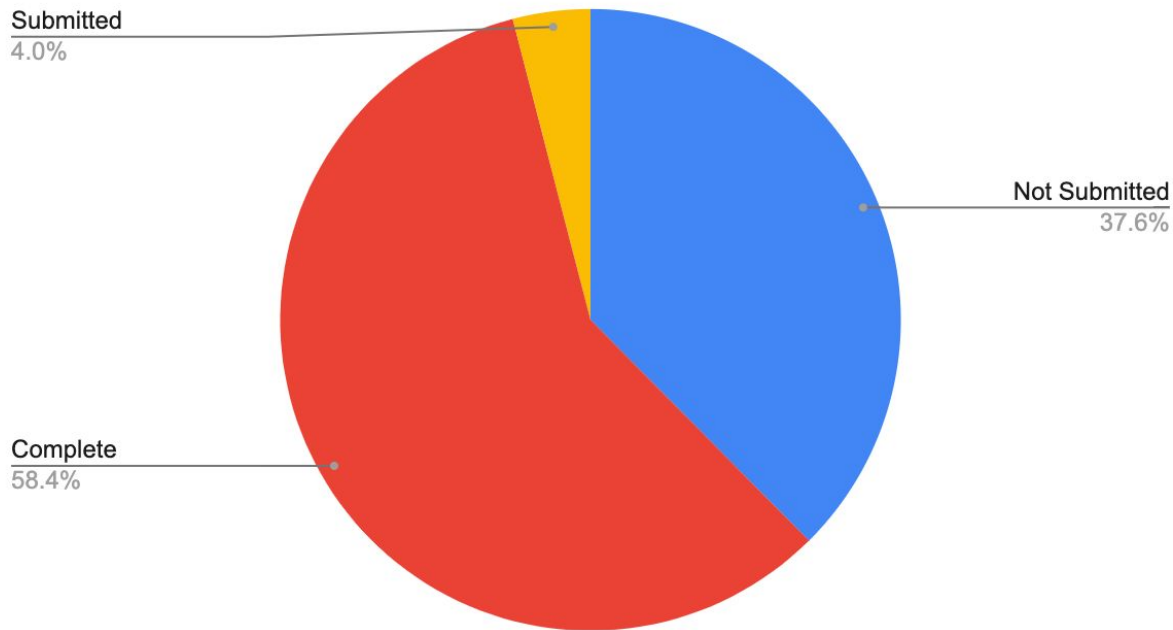
- WILs led their department through a Student Success protocol around course failure rates



# Postsecondary KPIs



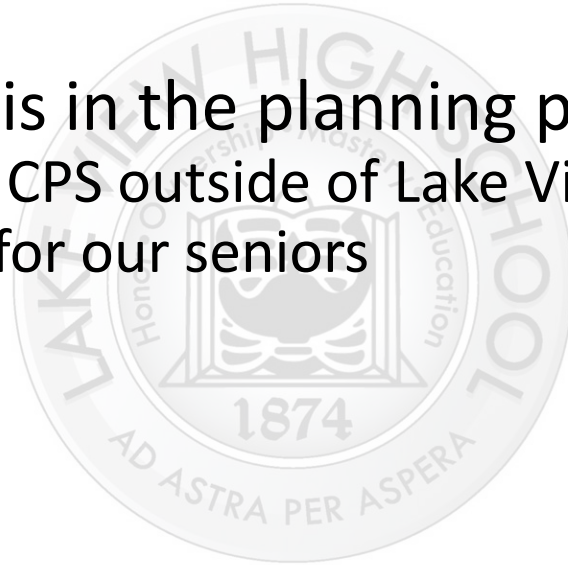
Count of LVHS FAFSA Status



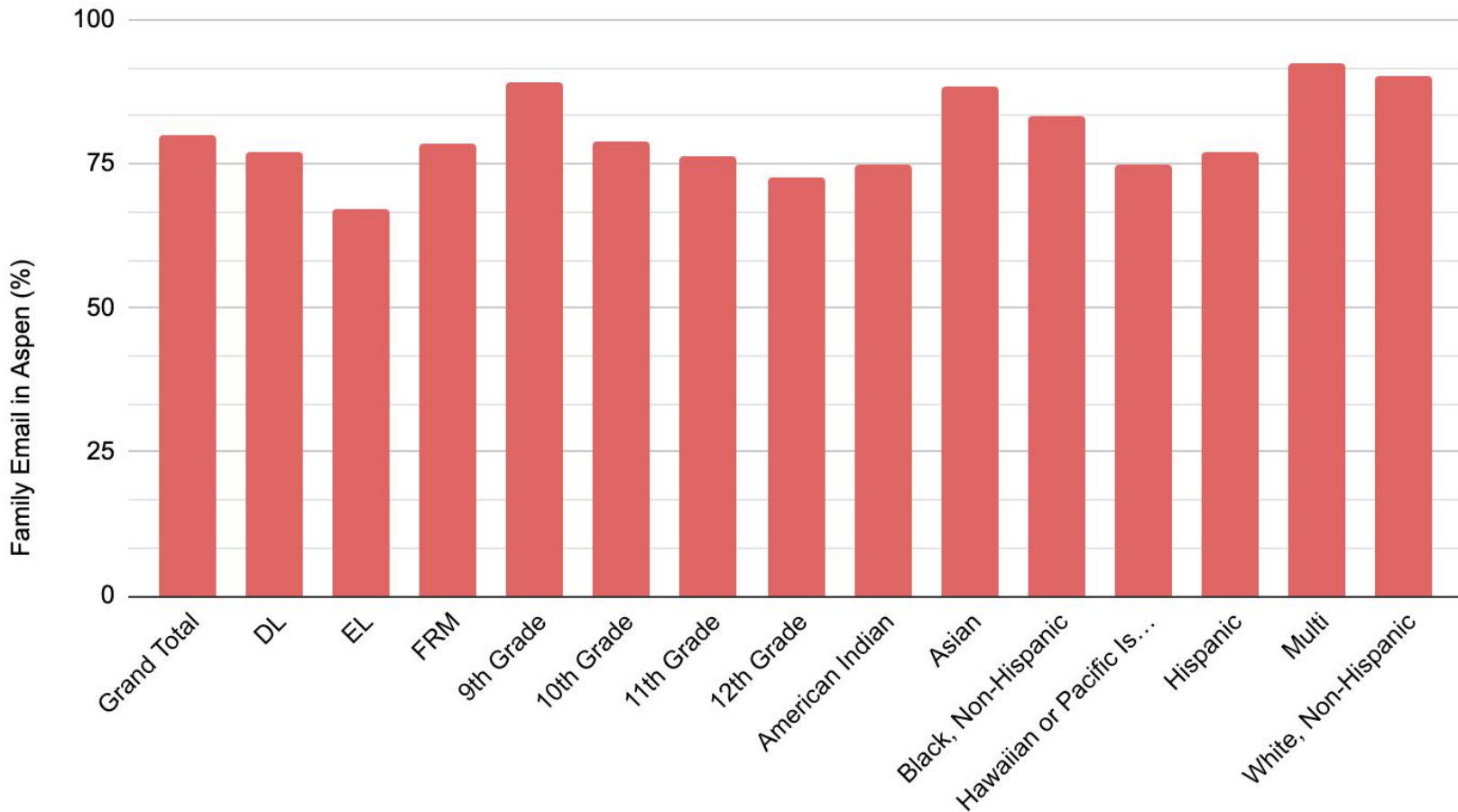
# Postsecondary Actions



- Day of Action is in the planning process
  - Members of CPS outside of Lake View to come provide 1-1 support for our seniors

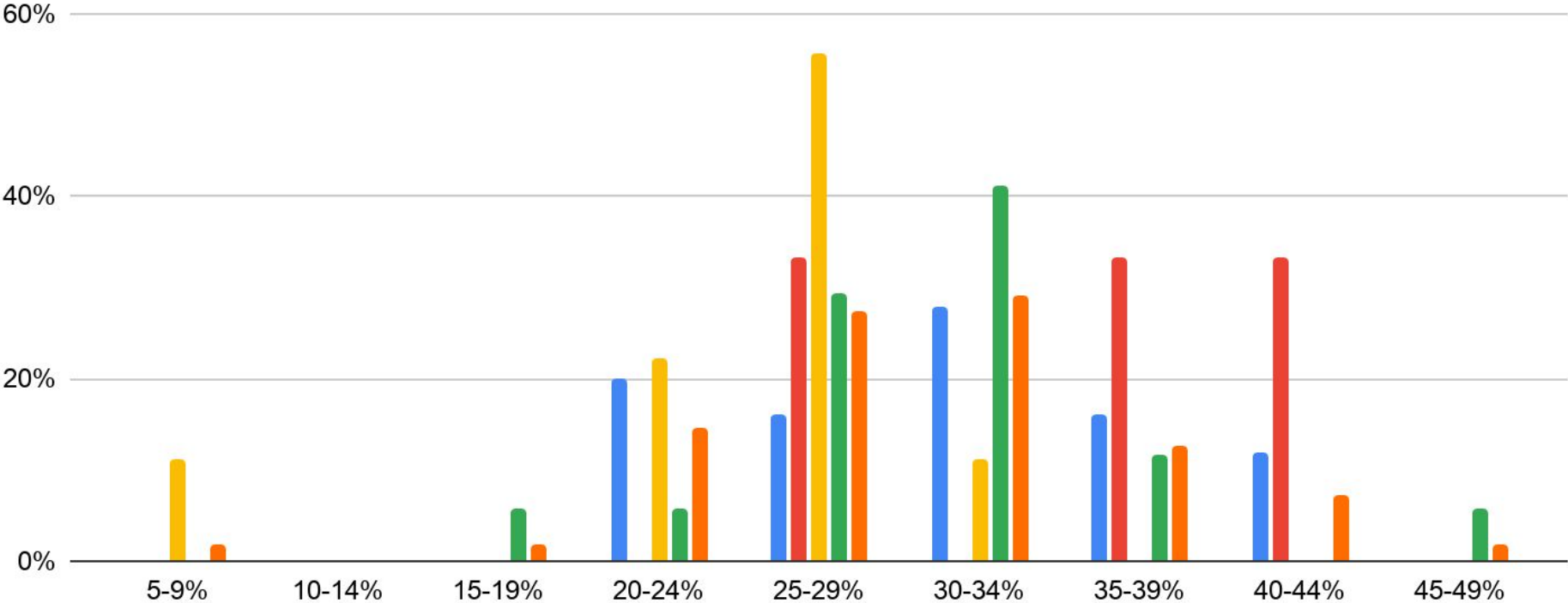


# Family Email in Aspen



# Open Rates by Email Type

■ Announcement ■ Incident ■ LSC Announcement ■ Regular Update ■ Grand Total



# Culture & Climate



- Staff completion of Equal Opportunity Schools survey, which garners data on teacher opinion on college-going culture, and gets recommendations on which students might be ready for which AP courses.
- Meeting with students to discuss what they want to know when selecting classes and how they think students could be better engaged to consider higher-level college and career prep courses
- Daily phone calls home to students with low attendance continues to occur, with focus areas dependent on data.

## Next Steps:

- Climate team began “blue sky thinking” about what a real HOME would look and feel like for our students.
- Culture team has set the date for the next virtual assembly to celebrate Black History Month on Feb. 26th.



# STEM Curriculum & Assessment



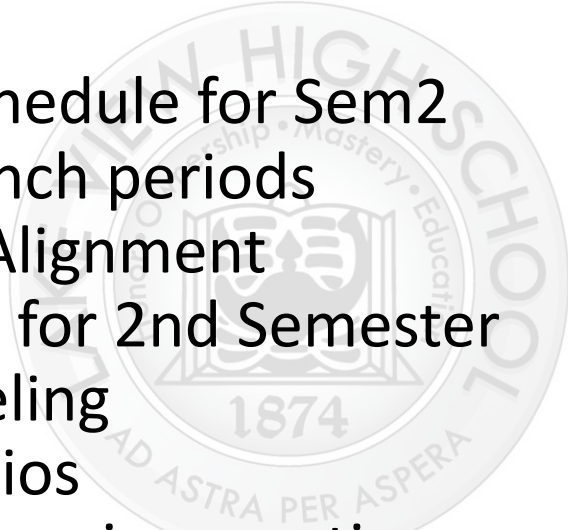
- Programming
  - Earned Honors
  - Senior Math
    - Calc/ Pre-Calc/ Transitional
  - Senior English
    - AP/ DC/ Transitional



# Preparations for Reopening



- New master schedule for Sem2
  - Open lunch periods
  - Course Alignment
- Preparation for 2nd Semester
- Course Leveling
- Student Ratios
- Bi-monthly reopening meeting



# STEM Teaching & Learning



- 4x4 Makeup Plan
  - 24% of grades increased
- CTE Pathway Exploration
  - Programming
  - Pre-Engineering
  - Biomedical

## Next Steps:

- Create department-specific Career Week lessons to teach students the possible careers aligned to their areas of interest.
- Remote Learning team to plan professional learning for February 5th to help teachers use Google classroom and/or Pear Deck to formatively assess student learning.

# Family, Community, and University Partnerships



- Drama Club, in partnership with Looking Glass Theater, held their first meeting Wednesday, January 13th!
- PAC Meeting set for 1/21 at 6:15 to review strategies that allow families to provide academic check-ins for their students.
- Engaged with Chief DiBartolo (CPS CIO) to redistribute MiFi hotspots to families who need internet access but are not on “Chicago Connects” eligibility rosters.

