

FALL 2020 TEACHING MODES

- Classes will begin on August 19th.
- Classes will be offered online, hybrid, and on-campus. Details are below.
- Regardless of teaching mode, the first four days of Fall 2020 semester (August 19-22) will be fully online for all classes.
- Beginning the semester online gives instructors an opportunity to communicate expectations, syllabi and logistics. Students should NOT come to campus until they receive specific instructions from their instructor.
- Any on-campus activity requires mask or face coverings and will adhere to social distancing guidelines.
- Students are encouraged to review their student schedule in LoLa for updated modes of class delivery.

MODES OF CLASS DELIVERY

ONLINE

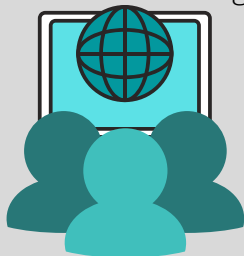
No in-person/face-to-face meeting required



- Online courses are listed in LoLa as **WEB**
- These courses will be conducted through our Learning management system, Canvas
- Instructors may use other technologies like Zoom, Google Meet, MyMathLab, etc.
- Online courses that have a time and date assigned in the course schedule require students to participate in synchronous activities, like virtual class meetings. Students must reserve the time indicated in the schedule for class participation.
- Courses that do not have a day and time indicated on the course schedule will be conducted primarily using asynchronous instruction. Students do not need to reserve a specific time for class participation but may complete coursework at times of their choosing as long as course requirements and deadlines are met.
- These courses do NOT require students to come to campus.

HYBRID

Blended teaching



- Hybrid Courses are listed in LoLa as **HYD**
- Students enrolled in HYBRID courses should expect a significant portion of course instruction to be delivered online using Canvas.
- Instructors may use other technologies like Zoom, Google Meet, MyMathLab, etc.
- There will be some opportunity for on-campus learning during the semester, but students should NOT come to campus until receiving specific instructions from their instructor.
- Hybrid courses are assigned days and times. Students should reserve that time for class participation. That participation may be virtual.

FACE-TO-FACE

Traditional in-classroom teaching



- On-Campus Classes for the Fall 2020 will be listed in LoLa as **STU, LAB, LLB**
- These classes will primarily be classes that require hands-on instruction.
- Due to considerations of social distancing and other safety protocols, these classes will have an online component. Students should be prepared to complete online content as part of these classes.
- In order to maintain small groups and to meet distancing requirements, students may not be required to attend all scheduled class meeting times in person. Students should wait for specific instructions from their instructor before coming to campus.
- Students should still reserve the time indicated in the schedule for class participation either in person or online.

Externships, Practicums, Clinical Classes, and Independent Studies

- These courses are listed in LoLa as **EXT, PRA, CLN, IND**
- These courses involve external partners and individual plans.
- Students in these courses should expect to receive specific instructions from their course instructor about attendance and performance expectations.

FOR MORE INFORMATION

www.nunez.edu