



# Epping High School

December 01, 2020

## Remote Learning Student Expectations

In order to create a safe and robust learning environment for every EHS student it is important for our students to follow expectations. Below we've provided you with a list of guidelines that will help your teachers, your classmates and you!



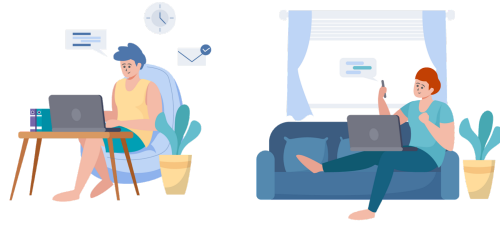
### Remote Learning

- Log in on time for attendance
- Use your school issued Chromebook
- Use your school issued Google account
- Due dates are the same as in class students
- Work on/in assigned class for the entire block or until a teacher dismisses you
- No recording of any kind
- Be Respectful, Kind and Responsible

## Work Space & Flow

Below are some suggestions to help you be productive and achieve at a top level. When you are home for remote learning be sure to try and follow this list:

- Create a workspace and try to find a dedicated quiet place
- Check your email daily
- Check Google Classroom daily
- Reach out to teachers for help
- Dress appropriately



## Google Meet - Be Prepared

- Camera on
- Mute your microphone until called upon
- Limit background noise
- Use headphones/earbuds when possible
- Do not talk while someone else is talking
- Do not share your screen unless asked
- Use front lighting
- Close apps you're not using to help with Chromebook performance
- **AGAIN, NO RECORDING AT ANY TIME!**

