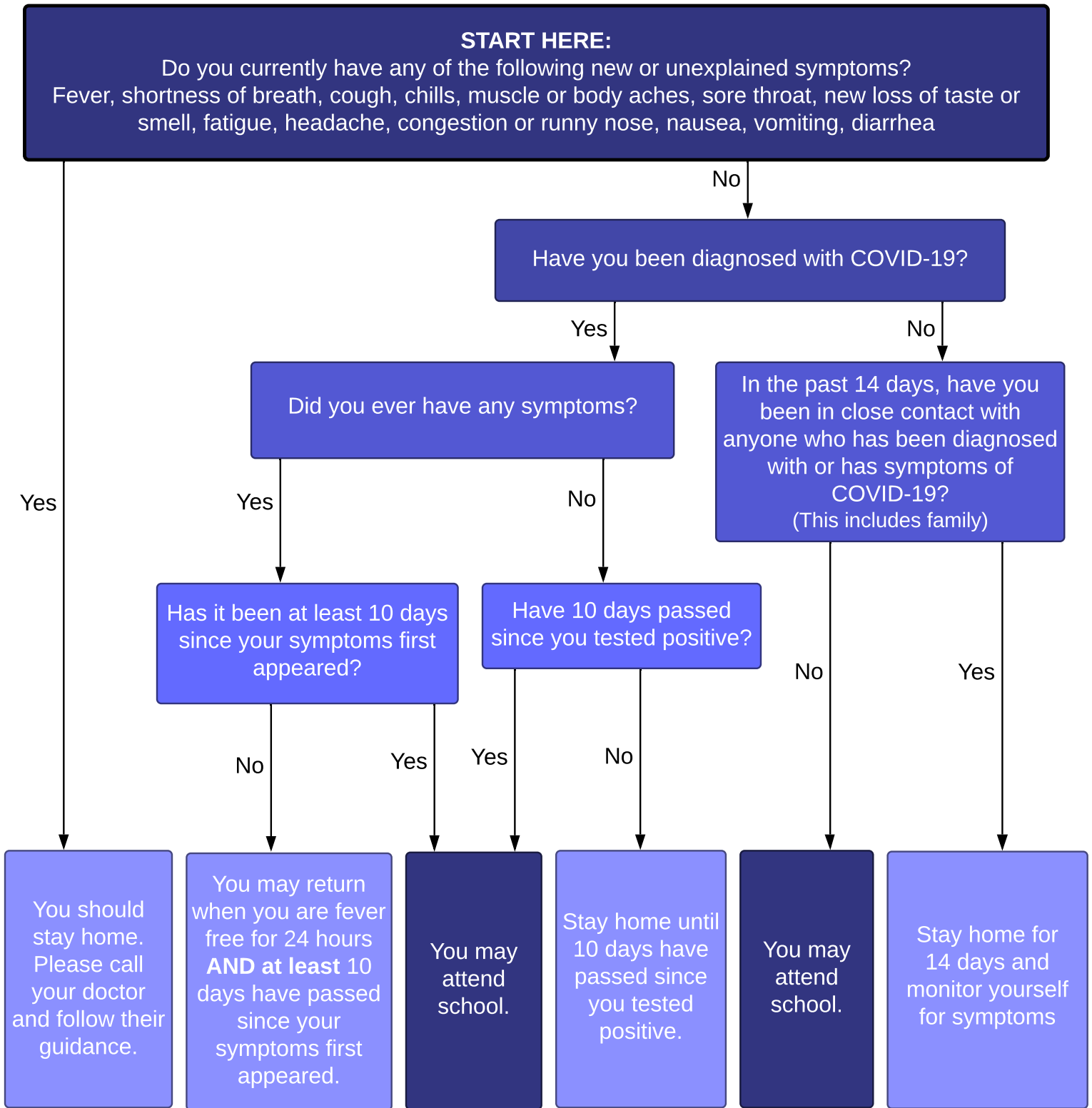


SAU21 School Attendance Decision Chart
For Students and Staff

August 31, 2020



Refer to [Return to School Protocols](#) for more information.

- <https://www.cdc.gov/coronavirus/2019-ncov/if-you-are-sick/steps-when-sick.html>
- <https://www.cdc.gov/coronavirus/2019-ncov/if-you-are-sick/quarantine-isolation.html>
- <https://www.cdc.gov/coronavirus/2019-ncov/hcp/disposition-in-home-patients.html>