

Covid-19 Health Metrics

DPH Data from 11/19/2020



Dashboard of Public Health Indicators

Testing and Cases

Newly Reported Confirmed Cases	Total New Molecular Tests Reported	7-Day Average Positivity	Estimated Active Cases
2,532	92,139	3.17%	34,664

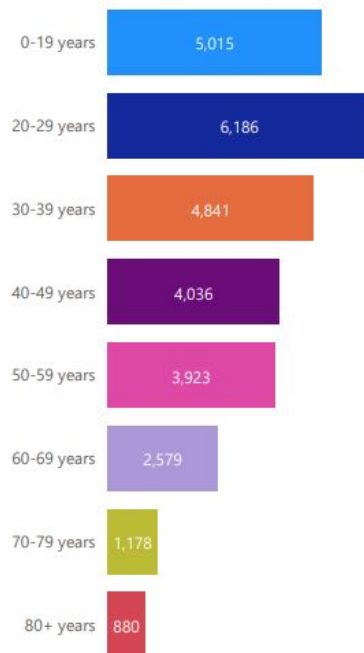
Hospitalization

Total Confirmed COVID Patients in Hospital	Total Confirmed COVID Patients in ICU	Average Age of Cases that were Hospitalized*
917	181	66

Deaths

Newly Reported Deaths among Confirmed	Average Age of Deaths*	14-Day Average Turnaround (from Test Sample to Report to DPH)*
27	81	1.92

Total Cases By Age Group
from 11/1/2020-11/14/2020 *



Note: For definitions, please see the Glossary at the end of this document in "Definitions and Disclaimers". Average age of hospitalized cases and deaths are calculated for a two week period covering 11/01/2020 to 11/14/2020. Please see the most current weekly dashboard for more details <https://www.mass.gov/info-details/covid-19-response-reporting>

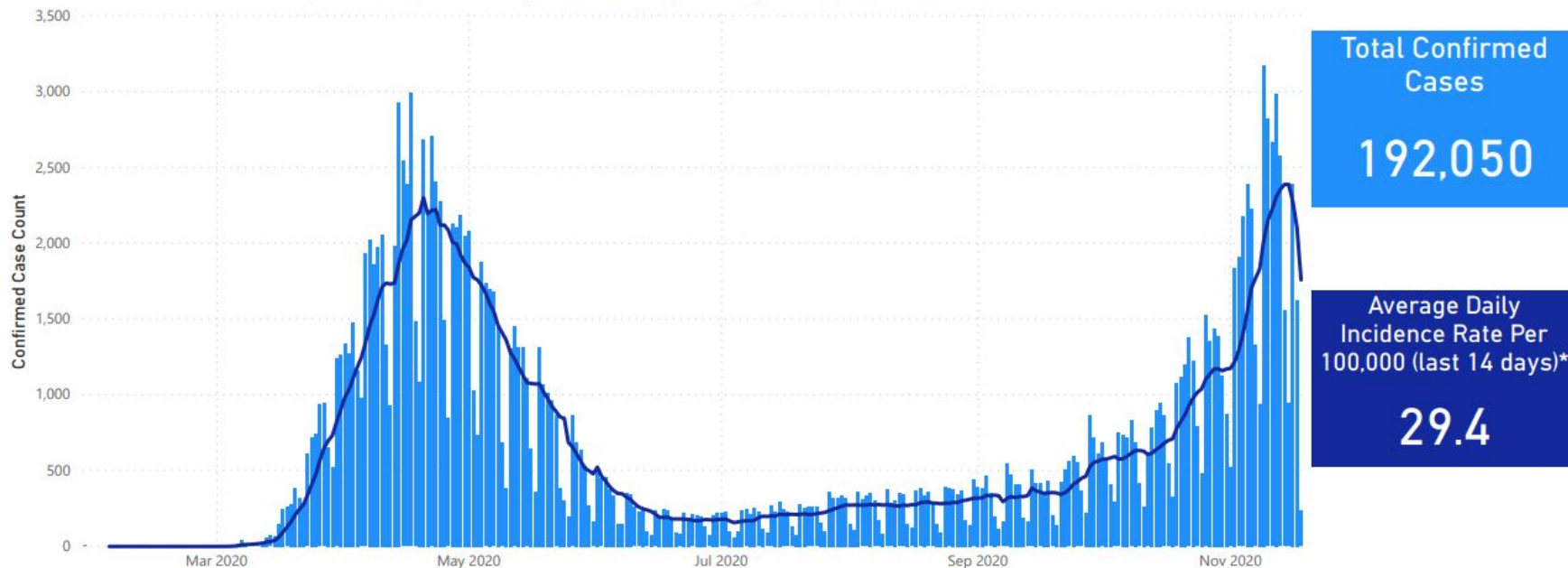
*Last updated Wednesday, November 18, 2020



Daily Confirmed Cases (Since March)

Confirmed COVID-19 Cases To Date by Date Individual Tested

● Confirmed Cases by Date ● 7-Day Average Confirmed Case Count



Data Sources: COVID-19 Data provided by the Bureau of Infectious Disease and Laboratory Sciences; State Population Estimate 2019: Small Area Population Estimates 2011-2020, version 2019, Massachusetts Department of Public Health, Bureau of Environmental Health; Tables and Figures created by the Office of Population Health.

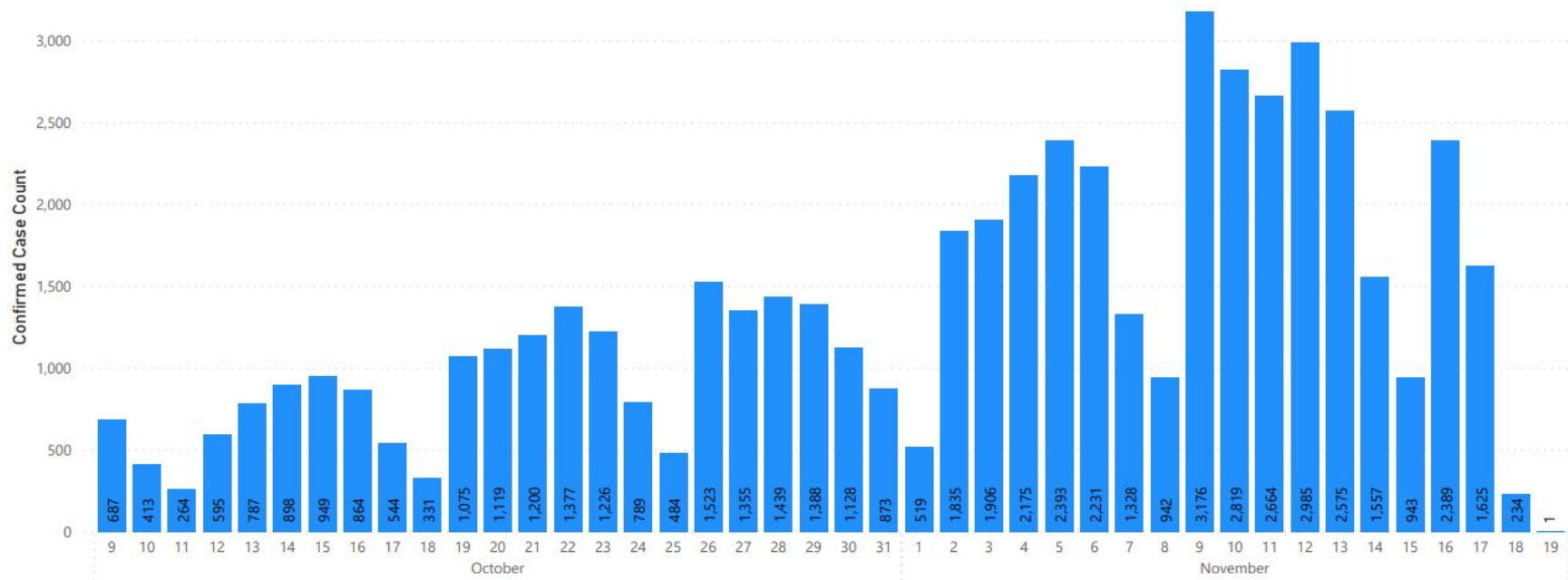
Note: all data are current as of 8:00am on the date at the top of the page. Due to lag in reporting by laboratories, counts for most recent dates are likely to be incomplete.

*Last updated Wednesday, November 18, 2020; Covers 11/1/2020-11/14/2020.



Daily Confirmed Cases (Past 6 Weeks)

Confirmed COVID-19 Cases by Date Individual Tested



Data Sources: COVID-19 Data provided by the Bureau of Infectious Disease and Laboratory Sciences; Tables and Figures created by the Office of Population Health.

Note: all data are current as of 8:00am on the date at the top of the page. Due to lag in reporting by laboratories, counts for most recent dates are likely to be incomplete.

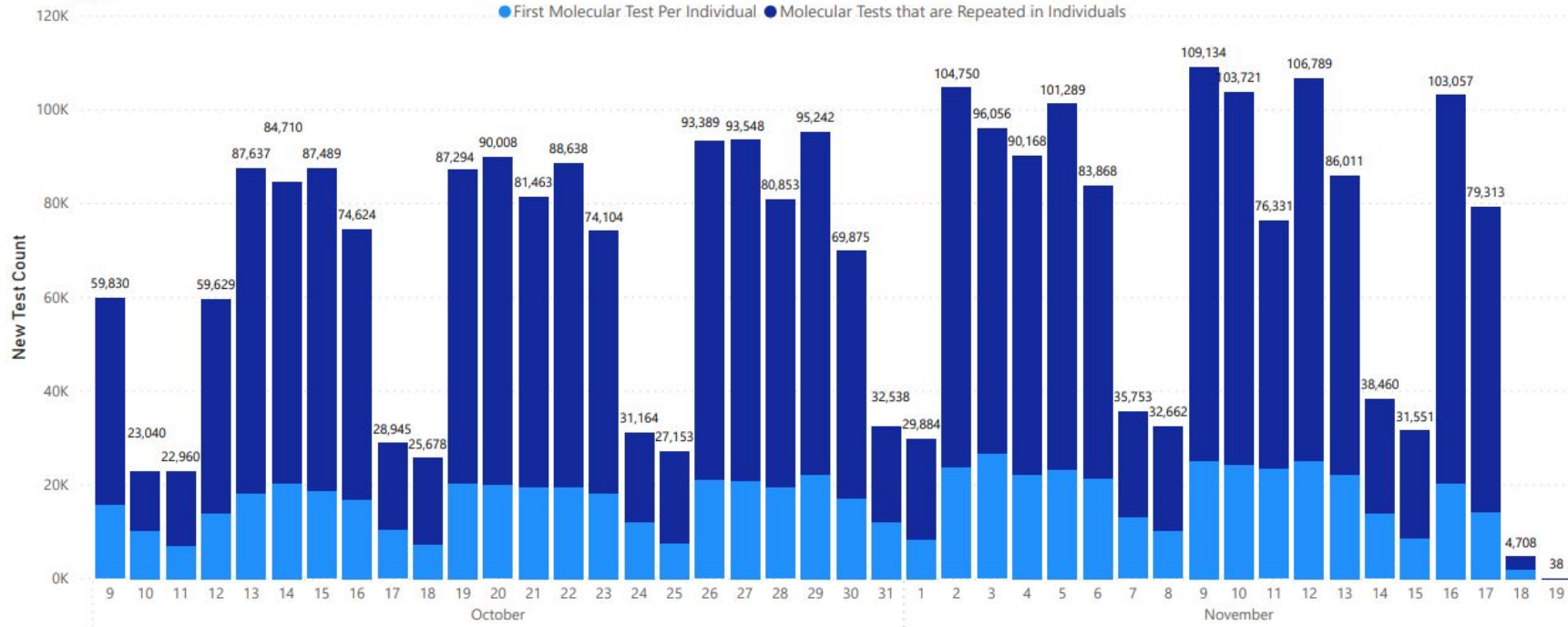


Massachusetts Department of Public Health COVID-19 Dashboard- Thursday, November 19, 2020

Testing by Date - Molecular (Total Tests Conducted Past 6 Weeks)

Total Number of Molecular Tests Performed by Date

● First Molecular Test Per Individual ● Molecular Tests that are Repeated in Individuals



Data Sources: COVID-19 Data provided by the Bureau of Infectious Disease and Laboratory Sciences; Tables and Figures created by the Office of Population Health.

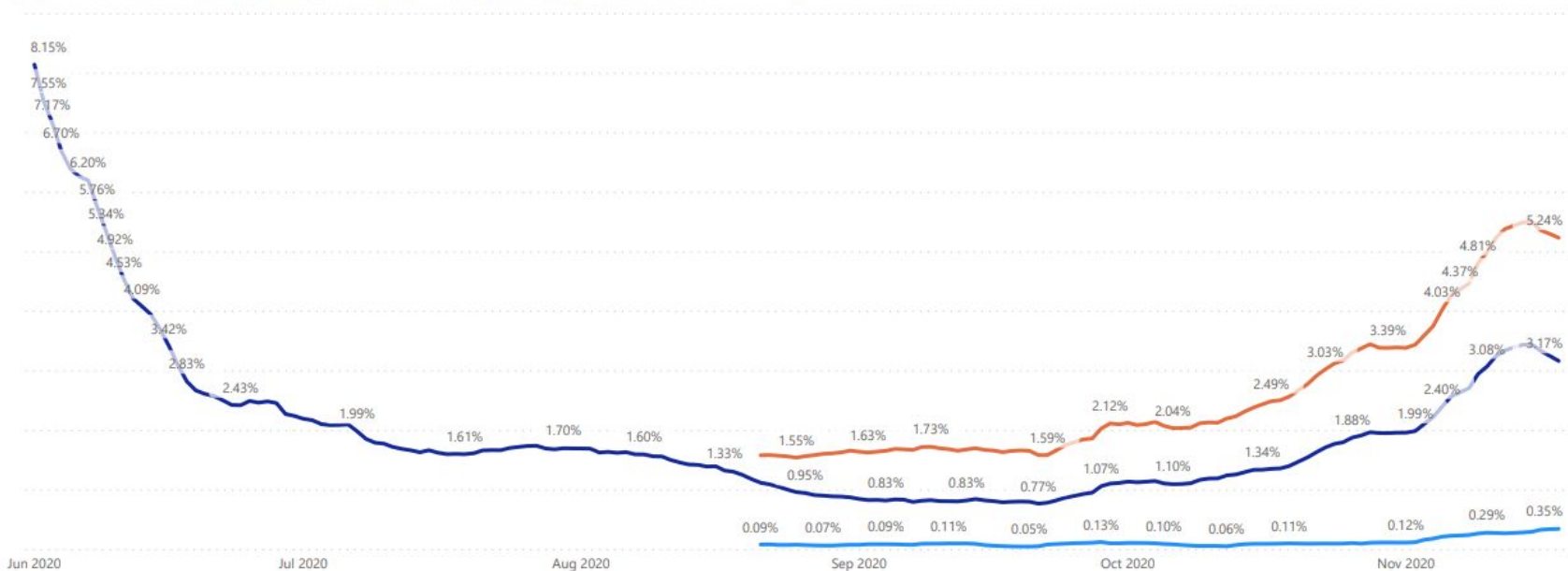
Note: all data are current as of 8:00am on the date at the top of the page. Due to lag in reporting by laboratories, counts for most recent dates are likely to be incomplete. This includes individuals who have had more than one molecular test.



Testing by Date - Molecular (Percent Positive)

7-Day Weighted Average of Percent of Tests By Molecular Method that are Positive by Test Date

● MA Statewide (metric on p.2) ● MA Higher Education Only ● MA with Higher Education Tests Removed



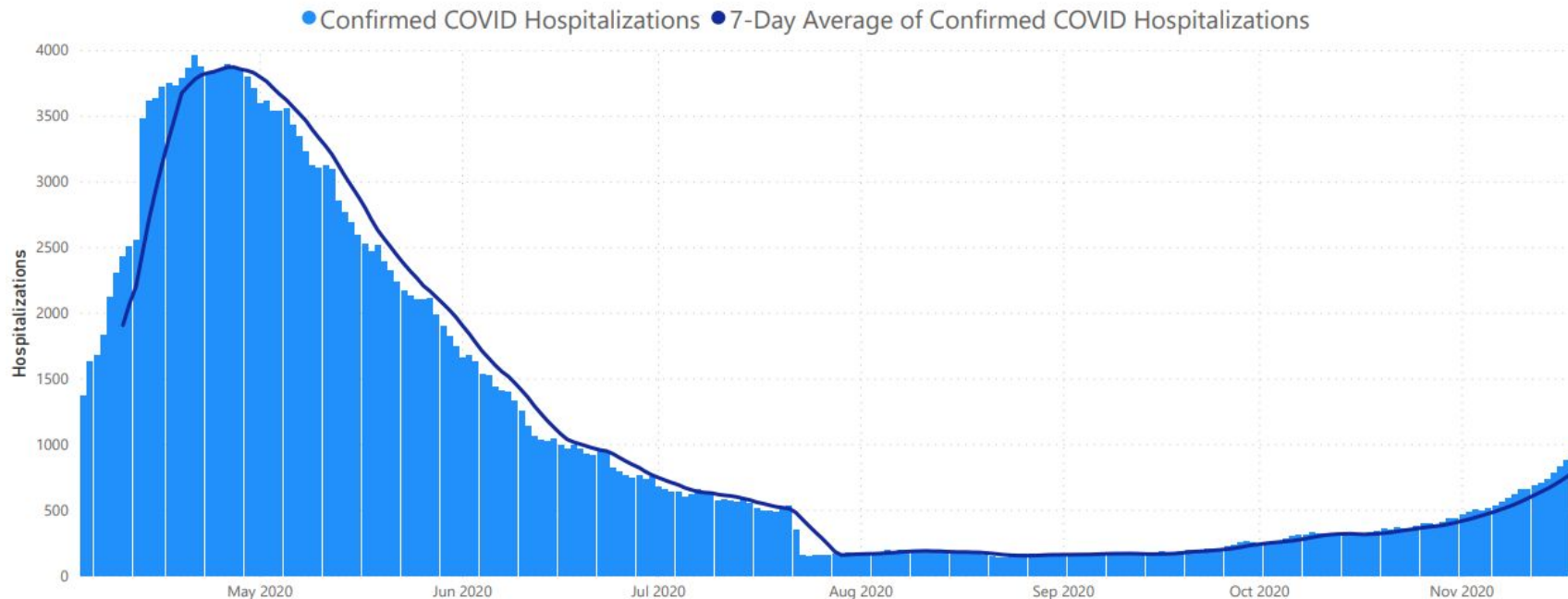
Data Sources: COVID-19 Data provided by the Bureau of Infectious Disease and Laboratory Sciences; Tables and Figures created by the Office of Population Health.

Note: all data are current as of 8:00am on the date at the top of the page. Due to lag in reporting by laboratories, counts for most recent dates are likely to be incomplete. This includes individuals who have had more than one molecular test.



Daily Confirmed Hospitalizations

Total Confirmed COVID Patients in Hospital



Data Sources: COVID-19 Data provided by the MDPH survey of hospitals (hospital survey data are self-reported); Tables and Figures created by the Office of Population Health.

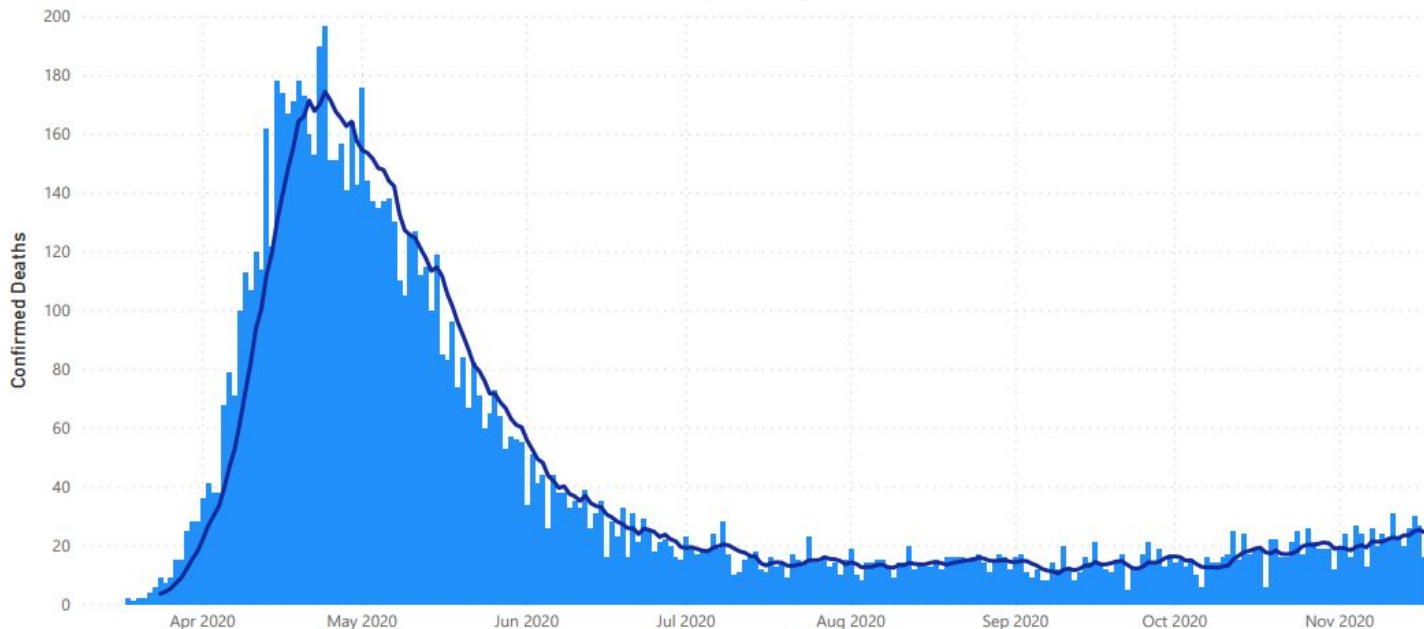
Notes: data are current as of 3:00pm the day before the date at the top of the page. For purposes of this reporting, "confirmed" are cases with a PCR test. Data prior to July 22, 2020 include both confirmed and suspected COVID hospitalizations, as confirmed COVID hospitalizations were not reported separately during this time.



Daily Confirmed Deaths (Since March)

Confirmed COVID Deaths by Date of Death

● Confirmed Deaths ● 7-Day Average of Confirmed Deaths



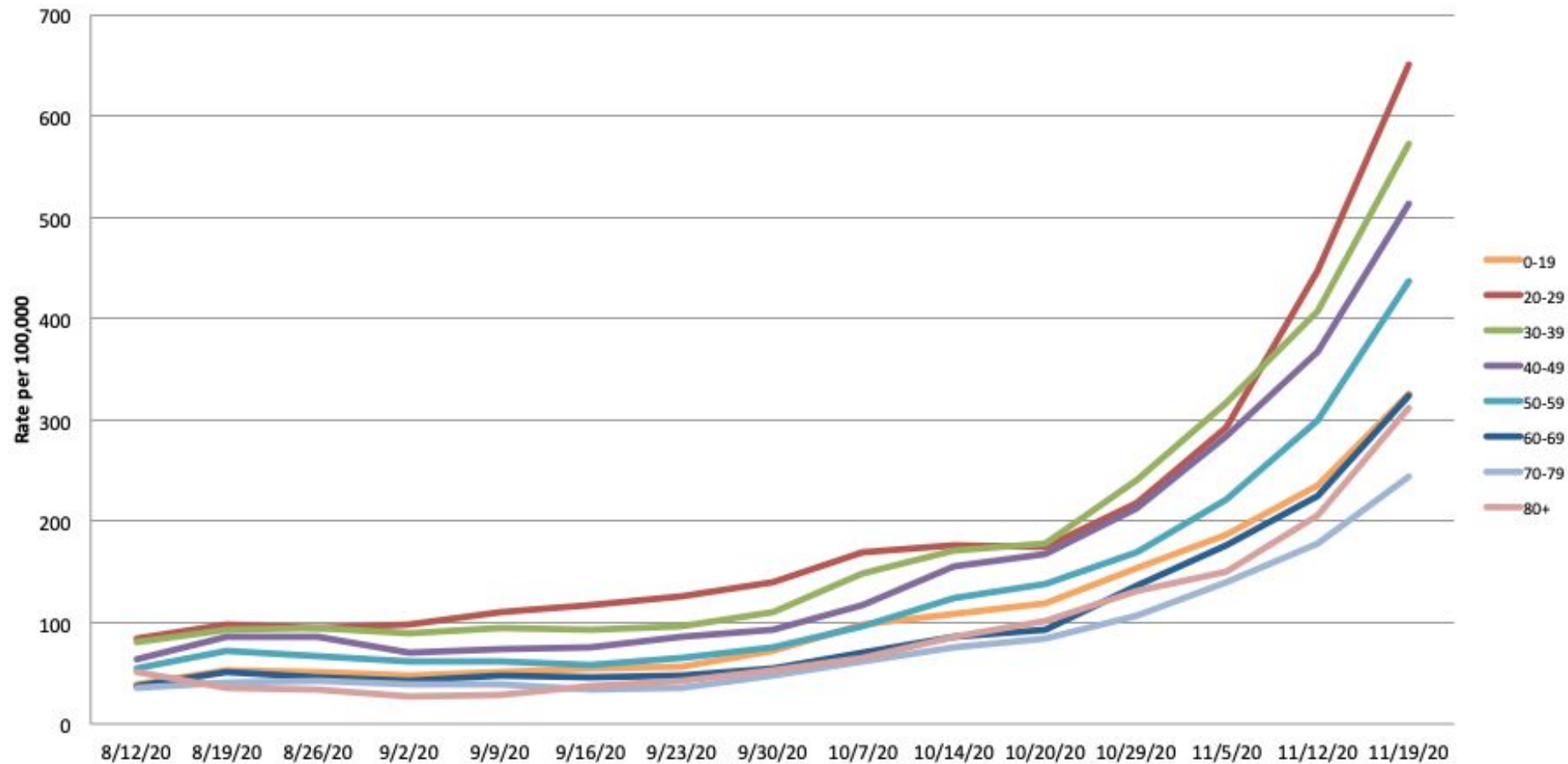
Total Deaths
Among Confirmed
Cases

10,204

Data Sources: COVID-19 Data provided by the Bureau of Infectious Disease and Laboratory Sciences; State Population Estimate 2019: Small Area Population Estimates 2011-2020, version 2019, Massachusetts Department of Public Health, Bureau of Environmental Health; Tables and Figures created by the Office of Population Health.

Note: all data are current as of 8:00am on the date at the top of the page.

Rate (per 100k) of Total COVID-19 Cases by Age Group for the Last Two Weeks





Massachusetts Department of Public Health COVID-19 Dashboard - Friday, November 06, 2020

Average Daily Incidence Rate per 100,000 Color Calculations

Group	Population		
	Under 10K	10K-50K	Over 50K
Grey	Less than or equal to 10 total cases	Less than or equal to 10 total cases	Less than or equal to 15 total cases
Green	Less than or equal to 15 total cases	<10 avg cases/100k AND >10 total cases	<10 avg cases/100k AND >15 total cases
Yellow	Less than or equal to 25 total cases	≥10 avg cases/100k OR ≥5% pos rate	≥10 avg cases/100k OR ≥ 4% pos rate
Red	More than 25 total cases	≥10 avg cases/100k AND ≥5% pos rate	≥10 avg cases/100k AND ≥4% pos rate

As of 11/5, DPH is using 2019 population estimates derived from a method developed by the University of Massachusetts Donahue Institute. The 2019 estimates are the most currently available data.

Littleton: Number of New Cases over Two Week Period



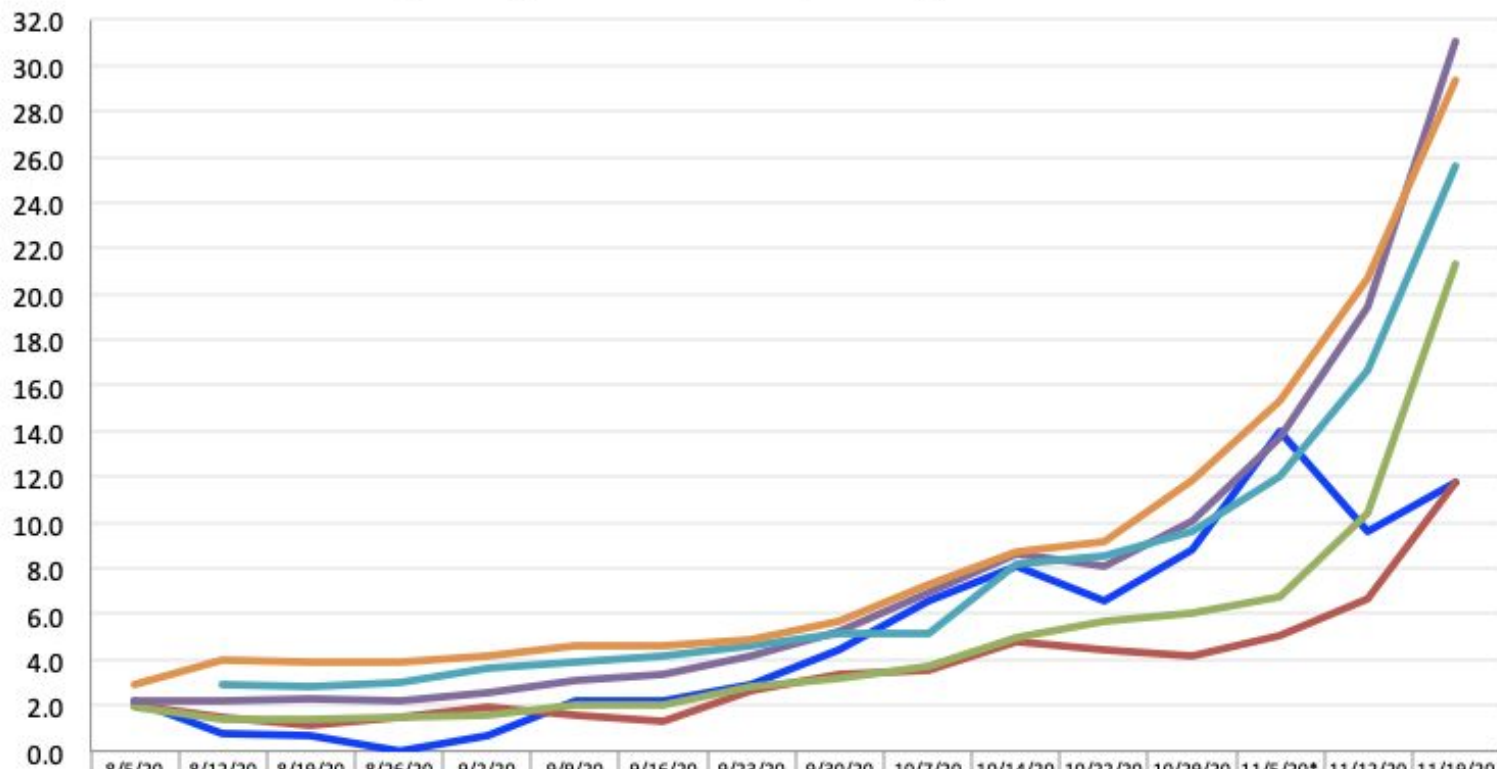
Average daily incidence rate per 100,000

	Number of new cases (2 week period)	Average daily case rate per 100,000 over last two weeks	Trend (compared to 2 weeks ago)	Threshold Color (new cut points)
MA State	28,660	29.4 Doubled	Higher (+14.1)	Yellow
Middlesex County	5,827	25.6 Doubled	Higher (+13.6)	
495 Belt	2,804	31.1 Doubled	Higher (+17.3)	
Surrounding Communities	637	21.3 Tripled	Higher (+14.6)	
Border Communities	145	11.7 Doubled	Higher (+6.6)	
Littleton	16	11.8	Lower (-2.2)	Yellow

Data from Weekly DPH report November 19, 2020

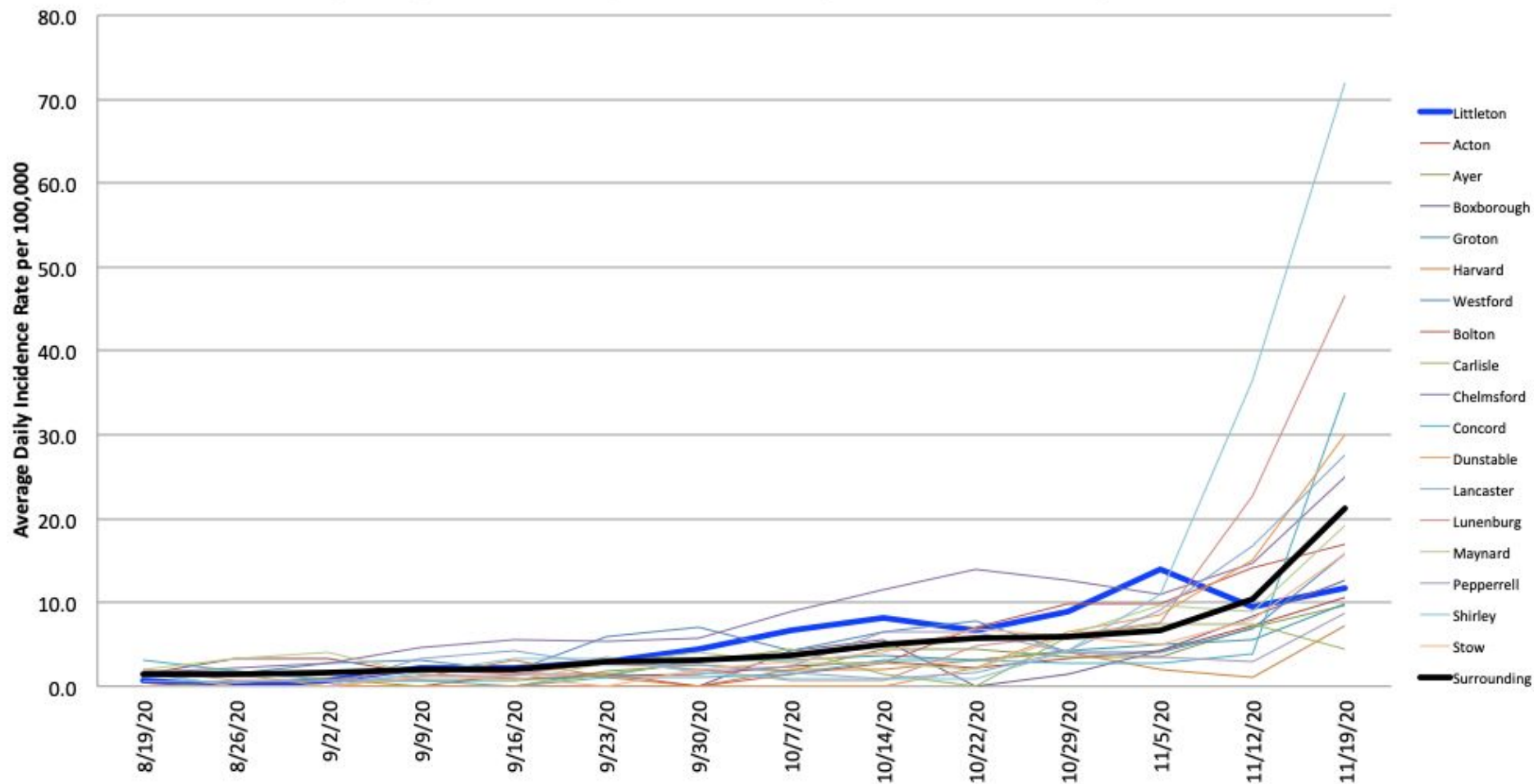
Average Daily Incidence Rate per 100,000

Average Daily Incidence Rate per 100,000 for past 14 days



Littleton	2.2	0.7	0.7	0.0	0.7	2.2	2.2	2.9	4.4	6.6	8.1	6.6	8.8	14.0	9.6	11.8
Border Communities	2.0	1.5	1.1	1.5	1.9	1.6	1.3	2.6	3.4	3.5	4.8	4.4	4.2	5.1	6.7	11.7
Surrounding Communities	1.9	1.4	1.4	1.5	1.6	2.0	2.0	2.8	3.2	3.7	5.0	5.7	6.0	6.7	10.4	21.3
Route 495 Belt	2.2	2.2	2.3	2.2	2.5	3.1	3.4	4.2	5.2	6.9	8.6	8.1	10.1	13.7	19.4	31.1
Middlesex County		2.9	2.8	3.0	3.6	3.9	4.2	4.6	5.1	5.1	8.2	8.5	9.6	12.0	16.7	25.6
MA State	2.9	4.0	3.9	3.9	4.2	4.6	4.6	4.9	5.7	7.3	8.7	9.2	11.8	15.3	20.7	29.4

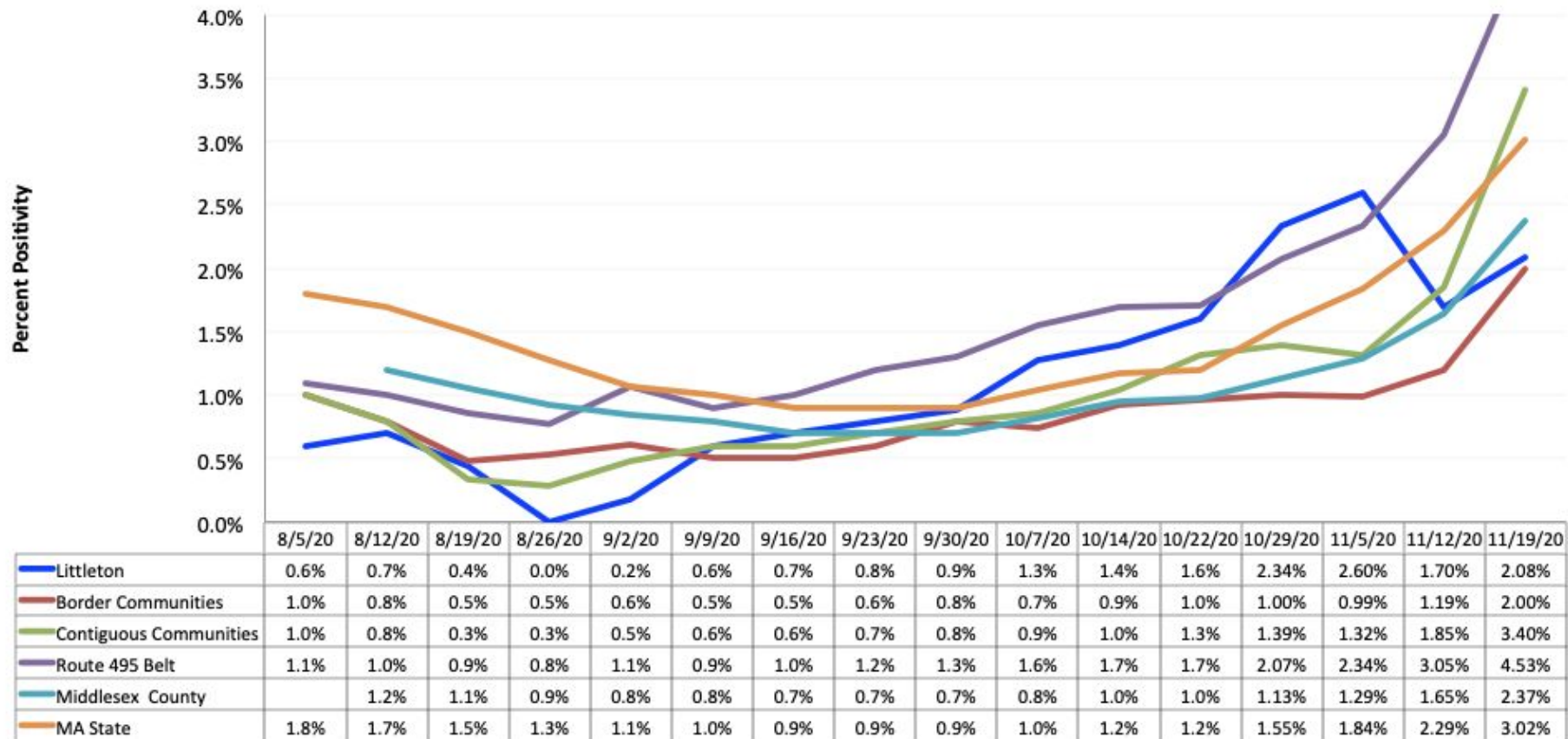
Average Daily Incidence Rate per 100,000 among Littleton's Surrounding Communities



Total Test Positivity

	Total Molecular Tests conducted (last 14 days)	Percent Positivity	Trend (compared to 2 weeks ago)
MA State	1,088,489	3.02%	Higher (+1.18%)
Middlesex County	277,879	2.37%	Higher (+1.08%)
495 Belt	69,081	4.53%	Higher (+2.18%)
Surrounding Communities	20,307	3.40%	Higher (+2.09%)
Border Communities	7,697	2.00%	Higher (+1.01%)
Littleton	817	2.08%	Lower (-0.52%)
Data from Weekly DPH report November 19, 2020			

Total Test Positivity



Masks Protect Others AND Protect YOU

NEW FACE MASK REQUIREMENTS EFFECTIVE NOVEMBER 6, 2020*



ALL PERSONS OVER THE AGE OF 5** MUST
WEAR A FACE COVERING WHENEVER IN
PUBLIC, INDOORS OR OUTDOORS



FACE COVERINGS ARE REQUIRED
WHEN IN A VEHICLE WITH
NON-HOUSEHOLD MEMBERS

FAILURE TO COMPLY WITH THIS ORDER MAY RESULT IN A CIVIL FINE OF UP TO \$300 PER VIOLATION.

For more information visit mass.gov/maskrules

*IN ACCORDANCE WITH EXECUTIVE ORDER #55

**MASKS ARE ENCOURAGED BUT NOT REQUIRED FOR AGES 2-5



College Students Returning Home

- College Students returning home may introduce COVID-19 into households or expose friends and family who they visit
- Students should limit social activities before travel home
- **Get tested** before you leave campus
 - Testing is a *snapshot* of the day you took the test - it's not 100% reliable
 - **DO NOT RELY EXCLUSIVELY ON NEGATIVE TEST RESULTS -**
 - Layer up prevention strategies (Masks, distance, ventilation, etc).
- **MA Travel Order** - complete Travel Form and Quarantine for 14 days or produce a negative COVID-19 PCR test
- **Mask up** at home, **keep your distance** to protect your family (quarantine in a separate part of the house if you can)
- Reconsider Thanksgiving plans that involve older family members or those at high risk for severe COVID-19 outcomes

Canada's Thanksgiving

- Canada celebrated Thanksgiving October 12
- Saw highest cases in the 2 weeks after Thanksgiving (incubation period)
- Testing was in decline at the time - only symptomatic or high risk situations able to be tested
- **More cases despite less testing indicates explosive growth**
- **Contact tracing indicated Thanksgiving was directly related to Covid spread**

Daily confirmed cases of COVID-19 in Canada



Chart: Alex Fitzpatrick for TIME • Source: JHU CSSE • Get the data • Created with Datawrapper

Daily COVID-19 testing in Canada

Per 1,000 people

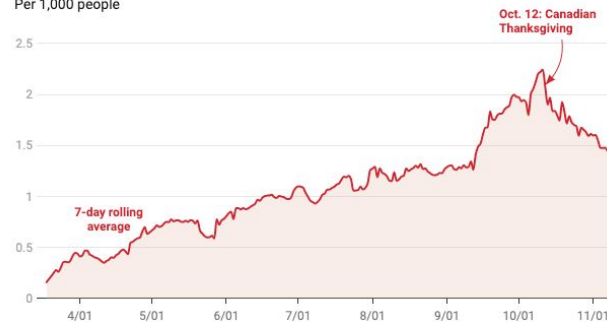


Chart: Alex Fitzpatrick for TIME • Source: Canadian government/OurWorldinData • Get the data • Created with Datawrapper

Thanksgiving During COVID-19

Keep it Small

- Members of **same household** or small group with regular contact
- **Virtual dinner with extended family is safest**
- Remember current gathering limits (max 10 indoors, 25 outdoors)
- Avoid in-person gatherings with people at higher risk for severe illness from COVID-19 (older adults, certain medical conditions)

Improve ventilation

- Outdoors is safer
- Open doors and windows

Wear a mask

- When not eating and drinking
- When preparing food

Wash your hands

- While cooking
- Before eating

Keep visits short

- Share the meal, not the day

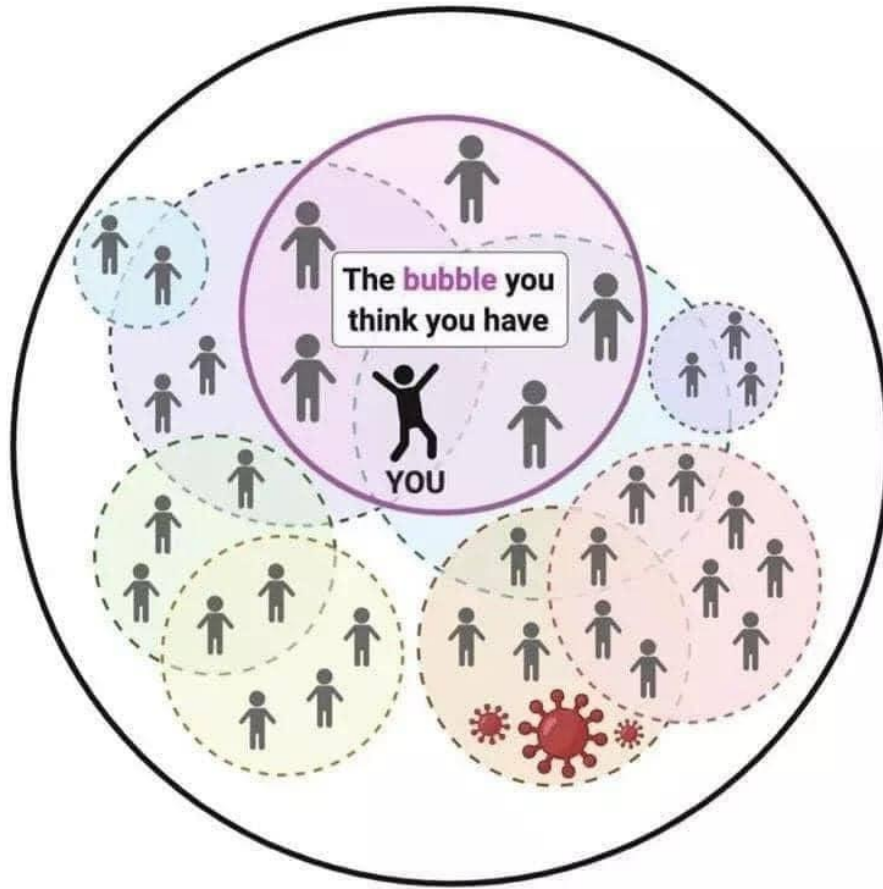
When not to go

People diagnosed with, has symptoms of, or exposed to COVID-19 should avoid attending any in-person gathering

Higher levels of COVID-19 cases and community spread increase the risk of spread among attendees (even if you stay in Massachusetts)

Quarantine or get tested

- Stay home for 14 days before and after holiday gatherings
- Obtain a negative COVID-19 molecular test no less than 3 days before and a separate test 4-7 days after your event
- Follow your destination and MA travel guidances
www.mass.gov/info-details/covid-19-travel-order



The bubble you actually have

Practice
COVID-19
Prevention
Daily

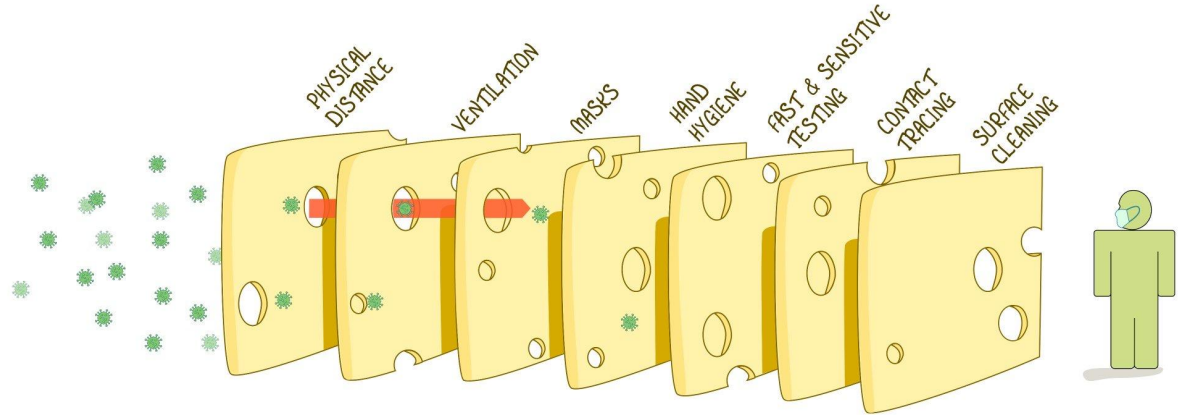
LAYER UP, LITTLETON

Stop the Spread of COVID-19

Anytime you are with people
you don't live with or near
someone who is Covid+:

- Wear a **mask**
- **Wash** your hands
- Stay at least **6 feet** apart
- Meet outside or **improve ventilation** by opening windows and doors
- Take extra precautions around someone at higher risk for severe illness from Covid-19

THE SWISS CHEESE RESPIRATORY VIRUS DEFENCE
RECOGNISING THAT NO SINGLE INTERVENTION IS PERFECT AT PREVENTING SPREAD



EACH INTERVENTION (LAYER) HAS IMPERFECTIONS (HOLES).
MULTIPLE LAYERS IMPROVE SUCCESS.