

**Leadership Preparatory Academy
Extended Day Program
Monday thru Friday
3:30 pm until 6:30 pm**

Leadership Preparatory Academy is offering an Extended Day Program that will explore STEM activities for students in grades 1 through 8. Students are offered a variety of learning experiences centered on technology, science, math, performing arts, and outdoor recreation. Students are provided with a healthy snack each day. Limited seats are available.

Frequently Asked Questions

Operating Hours:

Monday thru Friday: 3:30 pm until 6:30 pm

Registration Fee:

\$25.00 (nonrefundable) *Pay fee online at mypaymentsplus.com*

Cost Each Week:

\$60.00 per week (All payments are due the Friday prior to the beginning of the new week). All payments will be made online and must be received by 6:30 pm on the Friday prior to the beginning of the new week. A payment calendar along with the due dates will be provided to parents that will include a prorated payment schedule made for the weeks where there is a holiday.

Do you accept CAPS?

We are exploring how to access this program for our parents who may benefit from the service. We will provide you with an update over the summer.

Drop In:

Students will not be able drop in for one day. All students must be enrolled into the program in order to attend and must pay the weekly fee.

Refunds/Credits for Days Absent

Our program is based on a staffing matrix. Therefore, we will not provide a credit or a refund for days students are absent.

Program Components: Time will be allocated for students to complete their homework. ***This not a tutorial program.*** Students will have opportunities to participate in technology, drama, science, arts/crafts and outdoor activities.

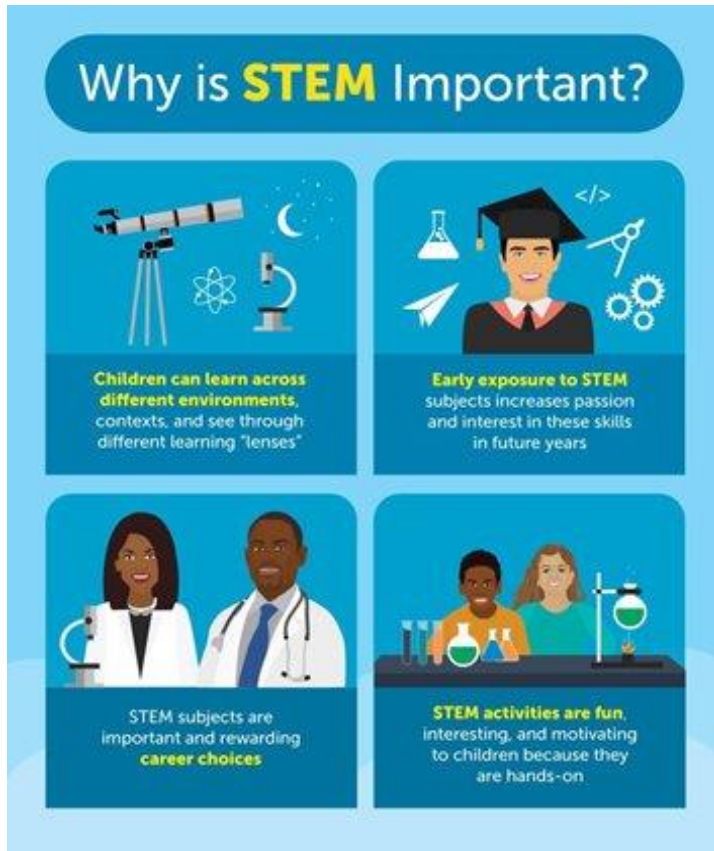
Discipline: Students who do not follow the Code of Conduct will be subject to the disciplinary rules outlined in the handbook. The handbook will clearly outline guidelines and consequences.

Snacks: Students will be provided a healthy snack each day.

Pick Up – Students must be signed out each day. You may pick up your child at any time prior to 6:30 pm. You will receive your pick up location information with your STEM Extended Day Packet. Those packets will be available during Open House in August.

Late Pick Up Fee - \$1.00 per minute after 6:30 pm

End of the Semester Exhibition - At the end of each semester, parents will be invited to attend the end of the year exhibition whereby we will highlight all of the activities students participated in during the semester.



Sample Schedule

3:30 pm – 4:00 pm

Snack/Restroom Break/Afternoon Meeting

4:00 pm – 5:00 pm

Exploration Assigned Stations (Drama, Math, Science, Technology, Arts/Crafts)

5:00 pm – 6:00 pm

Exploration Assigned Stations (Drama, Math, Science, Technology, Arts/Crafts)

6:00 pm - 6:30 pm

Wrap Up