

OPRFHS Attendance Data Summary, First Quarter 2012-13

Group	Average Attendance Rate
Female	95.72
Male	96.27
American Indian & Alaskan Native	94.69
Asian Or Pacific Islander	97.02
Black, Non-Hispanic	95.53
Hispanic	95.98
Multi-Racial	95.59
White, Non-Hispanic	96.21
9th Grade	97.06
10th Grade	96.91
11th Grade	95.60
12th Grade	94.63
General Education Students	96.28
Students with IEPs	94.61
Students Who Receive Free Lunch	94.39
Students Who Pay Full Lunch Price	96.40
Students Who Receive Reduced-Price Lunch	96.46

High school attendance is calculated by class period. The rates reported above were determined in the following way:

1. A percentage rate was calculated for each student by dividing the number of first quarter class periods the student was present by the total number of first quarter class periods.
2. Individual percentage rates were then averaged within the groups whose rates are reported above.

SUMMARY OF 2011-12 DISCIPLINE DATA

Total Reported Infractions, 2011-12

	Asian			Black			Hispanic			Multiracial			White		
	Female	Male	Total	Female	Male	Total	Female	Male	Total	Female	Male	Total	Female	Male	Total
9	8	5	13	277	383	660	25	24	49	42	97	139	149	150	299
10	9	1	10	441	610	1051	39	53	92	80	59	139	148	239	387
11	6	8	14	326	520	846	38	53	91	52	62	114	114	297	411
12	19	9	28	191	506	697	26	64	90	19	41	60	111	279	390
Grand Total	42	23	65	1235	2019	3254	128	194	322	193	259	452	522	965	1487

Total Reported Infractions, General Education Students and Students with IEPs

	Infractions by General Education Students					Infractions by Students with IEPs				
	Asian	Black	Hispanic	Multi	White	Asian	Black	Hispanic	Multi	White
9	9	552	42	123	239	4	108	7	16	60
10	10	959	91	127	350		92	1	12	37
11	14	511	54	86	220		335	37	28	191
12	10	305	21	20	202	18	392	69	40	188
Grand Total	43	2327	208	356	1011	22	927	114	96	476

Total In-School Suspensions, 2011-12

	Asian			Black			Hispanic			Multiracial			White		
	Female	Male	Total	Female	Male	Total	Female	Male	Total	Female	Male	Total	Female	Male	Total
9	8	5	13	277	383	660	25	24	49	42	97	139	149	150	299
10	9	1	10	441	610	1051	39	53	92	80	59	139	148	239	387
11	6	8	14	326	520	846	38	53	91	52	62	114	114	297	411
12	19	9	28	191	506	697	26	64	90	19	41	60	111	279	390
Grand Total	42	23	65	1235	2019	3254	128	194	322	193	259	452	522	965	1487

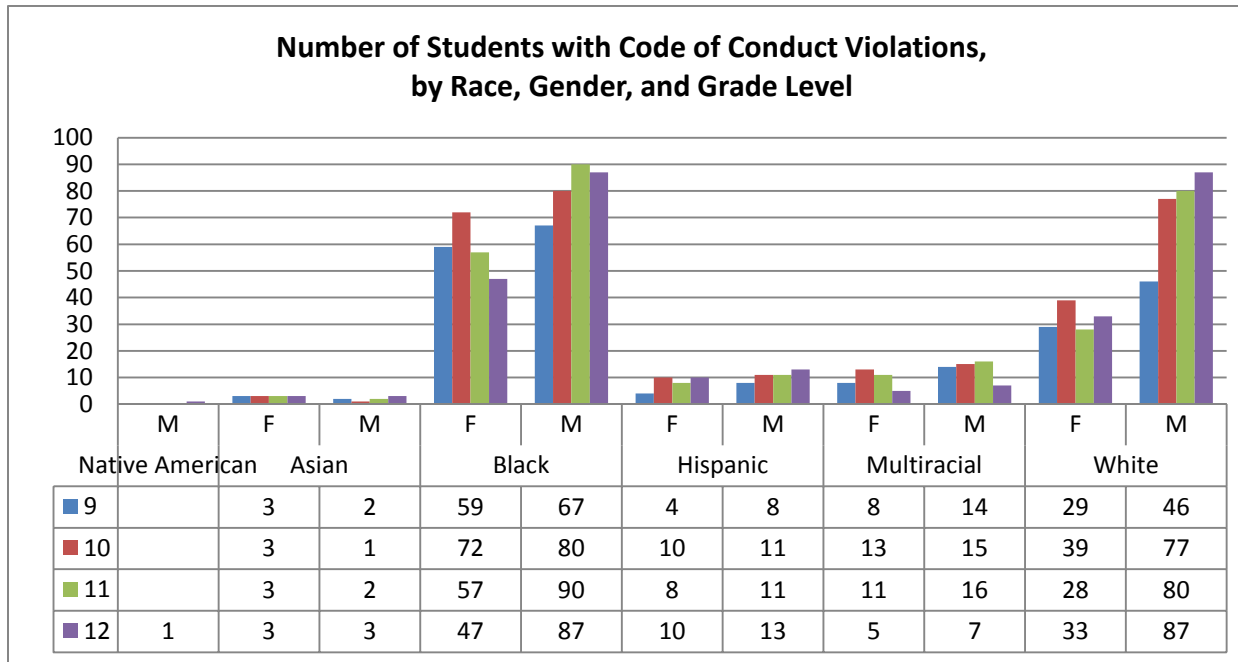
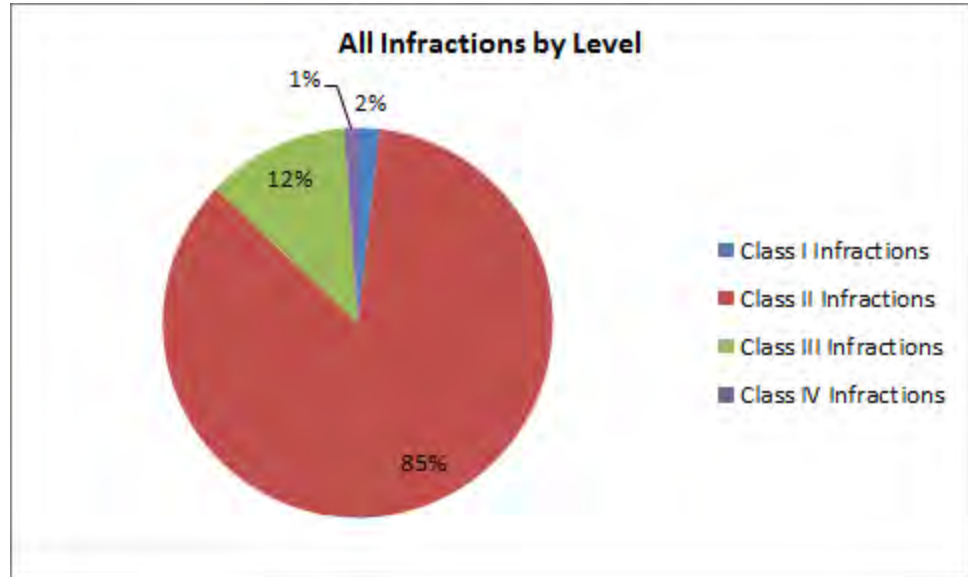
Total Out-Of-School Suspensions, 2011-12

	Asian		Black			Hispanic			Multiracial			White		
	Male	Total	Female	Male	Total	Female	Male	Total	Female	Male	Total	Female	Male	Total
9			15	14	29					10	10	2	3	5
10			11	37	48	1	2	3				3	7	10
11	1	1	24	30	54	1	2	3	3	7	10	2	4	6
12	1	1	12	36	48		10	10		3	3	4	10	14
Grand Total	2	2	62	117	179	2	14	16	3	20	23	11	24	35

Note: The count of infractions includes students who have incurred more than one infraction.

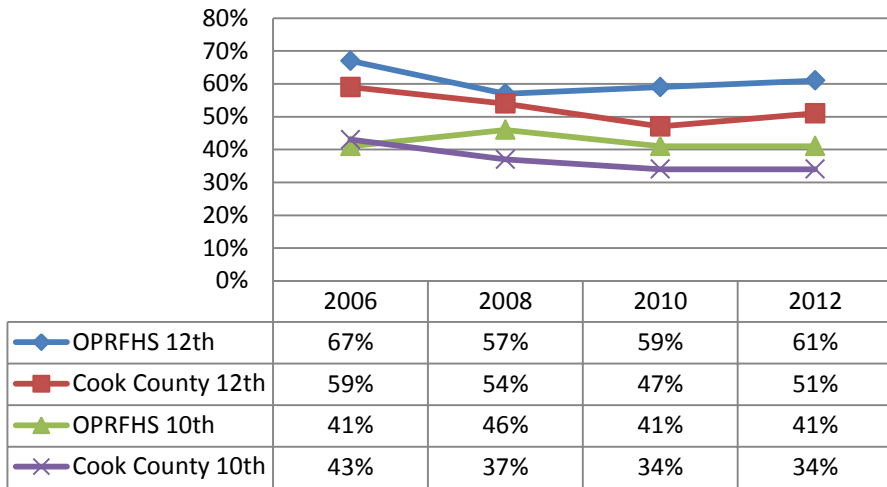
SUMMARY OF 2011-12 DISCIPLINE DATA

Total Suspensions for General Education Students and Students with IEPs		
	General Education Students	Students with IEPs
In-School Suspensions	774	393
9	155	74
10	286	47
11	191	146
12	142	126
Out-of-School Suspensions	167	88
9	30	14
10	52	9
11	44	30
12	41	35
Grand Total	941	481



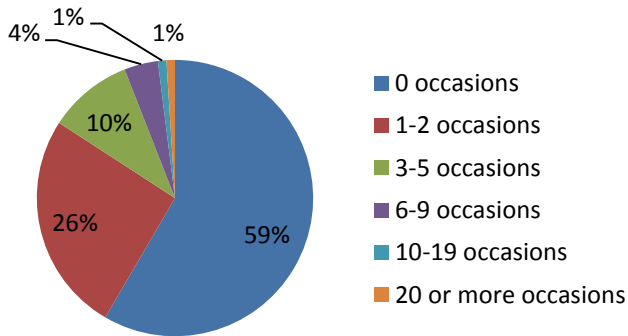
2012 ILLINOIS YOUTH SURVEY RESULTS SUMMARY

Percent of Students Reporting Alcohol Use, Past 30 Days

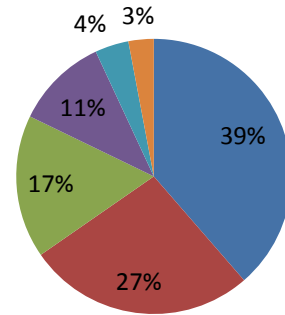


“Past 30 Days” refers to the 30 days prior to when the students completed the survey. For OPRFHS students, that timeframe would have been March-April, 2012.

Incidence of Alcohol Use, Past 30 Days, OPRFHS Grade 10 (2011-12)



Incidence of Alcohol Use, Past 30 Days, OPRFHS Grade 12 (2011-12)



Rates of Substance Use, Past Year, OPRFHS Grades 10 and 12 (2011-12)

