

Drop Off/Pick Up Procedures - Spectrum High School-Grade 6

11044 Industrial Circle Suite A, Elk River, MN 55330

School Hours: 7:55 a.m – 3:05 p.m. (7:50 a.m. warning bell)

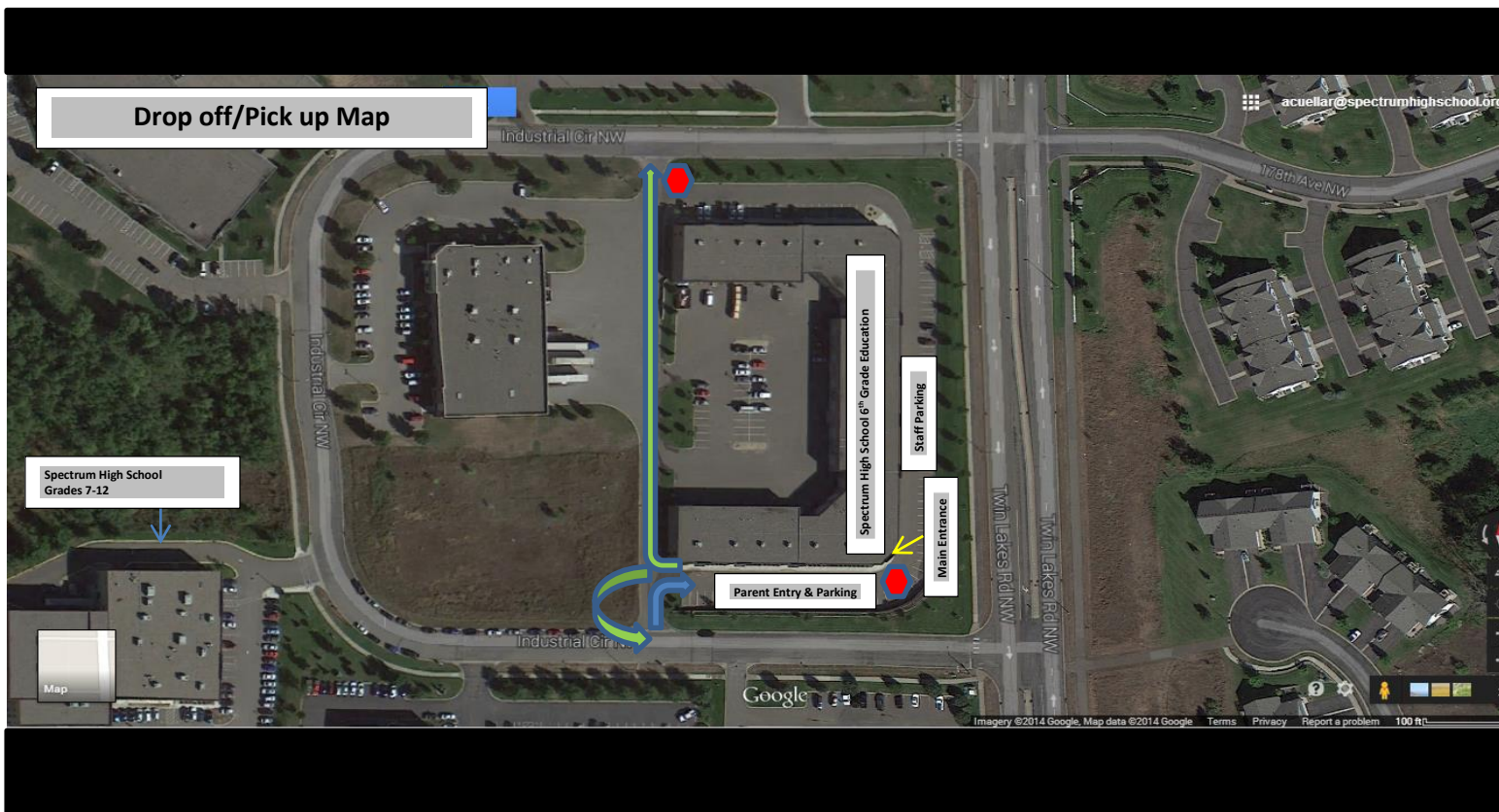
Drop Off Procedures:


If you are dropping off your child before school, please follow the procedure outlined to ensure the safety of students. Parents may drop students off between 7:15 a.m. and 7:50 a.m. (students will not be allowed in the building before 7:15 a.m.). Parents may only enter the parking lot at the designated area and park in parent parking spaces, indicated by the blue arrow on the map. Students will be released from the vehicle and must follow the sidewalk, at the front of the vehicle, to the crosswalk in front of the main entrance. Parents must exit the parking lot from the exits indicated by the green arrows on the map. There will be signs where cars are not allowed (also indicated on the map by the red stop sign). We will have staff and volunteers to help with drop off.


IMPORTANT NOTES: Parents may not enter the parking lot when buses are present (7:40-7:50 a.m. and 2:55-3:10 p.m.). You must arrive before or after these times. If arriving during the noted times, you will have to wait on the street until buses depart. Due to safety reasons there is no unloading or loading students from the street. PARENTS ARE NOT ALLOWED TO CIRCLE AROUND THE SCHOOL AT ANY TIME AND UNLESS DESIGNATED, NO PARKING OR DROP OFF/PICK UP IN THE REAR OF THE SCHOOL.


Pick Up Procedures:

If you are picking up your child after school, please follow the procedure outlined to ensure a safe and efficient dismissal of students. Parents may only enter at the designated area and park in parent parking spaces, indicated by the blue arrow on the map. Students will be dismissed from their classrooms at 3:12 p.m. (students taking the bus will be dismissed at 3:05 p.m.) and will exit the building from the main entrance, cross at the crosswalk and follow the sidewalk to their parent's vehicle. Parents must exit the parking lot from the exits indicated by the green arrows on the map. There will be signs where cars are not allowed (also indicated on the map by the red stop sign). We will have staff and volunteers to help with pick up. 6th grade students that have siblings at the high school will be shuttled to the Spectrum High School (grades 7-12) building for parents to pick up all of their students at one location.



 = Parent Stop and No Entry

 = Parent Entry

 = Parent Exit