

Barrow County School System

Boldly Committed to Student Success



Strategic Navigation Plan

2016-2021



*Barrow County School System Strategic Navigation Plan
2016-2021
Boldly Charting Our Course*



Barrow County School System

Boldly Committed to Student Success

Vision

Barrow County School System: Boldly Committed to Student Success

Mission

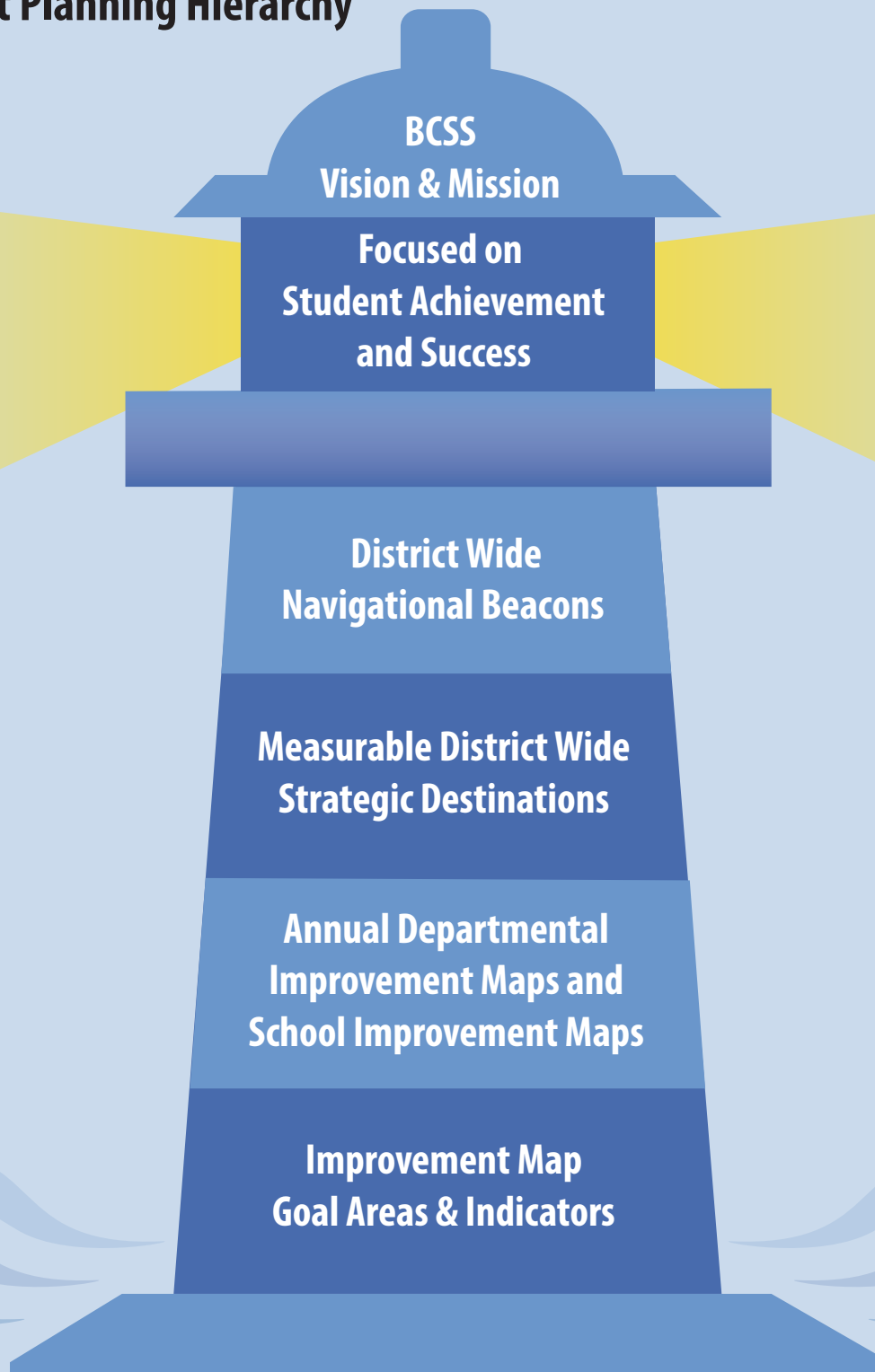
Ensuring an exceptional education that leads each student to become a high achieving and responsible citizen.

We believe that a quality school system

- Provides a world class education in a safe and caring environment which assures each student's success.
- Enhances individual student achievement through real-world experiences and active learning.
- Challenges students to exceed local, state, and national academic standards.
- Nurtures the total well-being, independence, creativity, and talents of each student enabling them to be postsecondary and/or workforce ready.
- Motivates students to develop exceptional critical thinking, reasoning, problem-solving and communication skills.
- Prepares students to be technologically literate.
- Develops continuous, collaborative relationships with students, parents, business partners, mentors and other community members.
- Respects diversity and promotes cultural understanding among all students and employees in every environment while supporting hometown values.
- Expects all school system employees to recognize that they are a major influence on our students.



BCSS District Planning Hierarchy



Systemwide Strategy Chart



Systemwide Navigational Beacons

In order to fully realize our student-centered vision, mission, and beliefs, BCSS commits to the following Strategic Navigational Beacons:



1. Build a sense of community and pride among all stakeholders

- Promote and market Barrow County Schools with positive language and common branding
- Strengthen parent and community engagement through improved communication and increased involvement
- Strengthen community-wide awareness and understanding of issues that impact educational decision-making
- Empower students to take ownership of their learning and be actively engaged in their schools and community

2. Attract, employ, develop, and retain the most effective people in order to provide a high quality education for all students

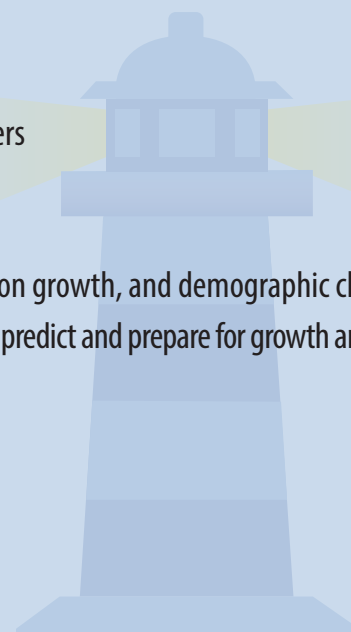
- Develop and implement an efficient and effective hiring process that results in the employment of top choice candidates
- Provide high quality, targeted, job-embedded professional learning and training to support teachers, staff, and leaders, designed to improve student achievement and close achievement gaps across the system
- Retain highly effective teachers, staff, and leaders by providing a positive, productive, and satisfying work environment, supportive leadership, and opportunities for innovation

3. Strengthen partnerships to sustain a culture of participation, engagement, and commitment to education

- Share opportunities and best practices among schools
- Increase student, parent, business, and community partner participation
- Promote collaboration between all governmental units in Barrow County
- Develop and strengthen relationships with all local, state, and federal policymakers

4. Proactively manage system growth

- Continuously assess and address the impacts of economic development, population growth, and demographic change
- Develop collaborative relationships with economic and community leaders to help predict and prepare for growth and change
- Develop staffing, infrastructure, and facility plans to address growth and change



Systemwide Navigational Beacons *(continued)*

In order to fully realize our student-centered vision, mission, and beliefs, BCSS commits to the following Strategic Navigational Beacons:



5. Enhance school and system funding and resource effectiveness

- Identify strategies for enhancing revenues and resources through foundations, partnerships, and other sources
- Cultivate fiscal responsibility through ongoing evaluation of resource allocation and use
- Provide ongoing professional learning to build knowledge of finance and budgeting capacity in all school leaders



Measurable System Wide Strategic Destinations

- All Schools at 4+ Climate Rating on CCRPI
- All Schools at 85+ on the CCRPI or above state average
- 100% of schools Meeting or Beating the Odds for charter systems
- All students reading on or above grade level by end of 3rd grade
- 90%+ students graduating on time or earlier
- Dropout Rate less than 3%
- All CCRPI Achievement Gaps smaller than the state average

6. Leverage technology and digital tools efficiently and effectively

- Ensure that technology is operational, is deployed optimally, and has sufficient capability to meet instructional and administrative needs
- Develop and annually update a viable and goal-oriented comprehensive system-wide technology plan
- Strengthen teacher competency in using technology to enhance classroom teaching and student learning
- Develop the ability to deliver curricula electronically to hospital and home-bound students and to the general population as needed





Barrow County School System

Boldly Committed to Student Success



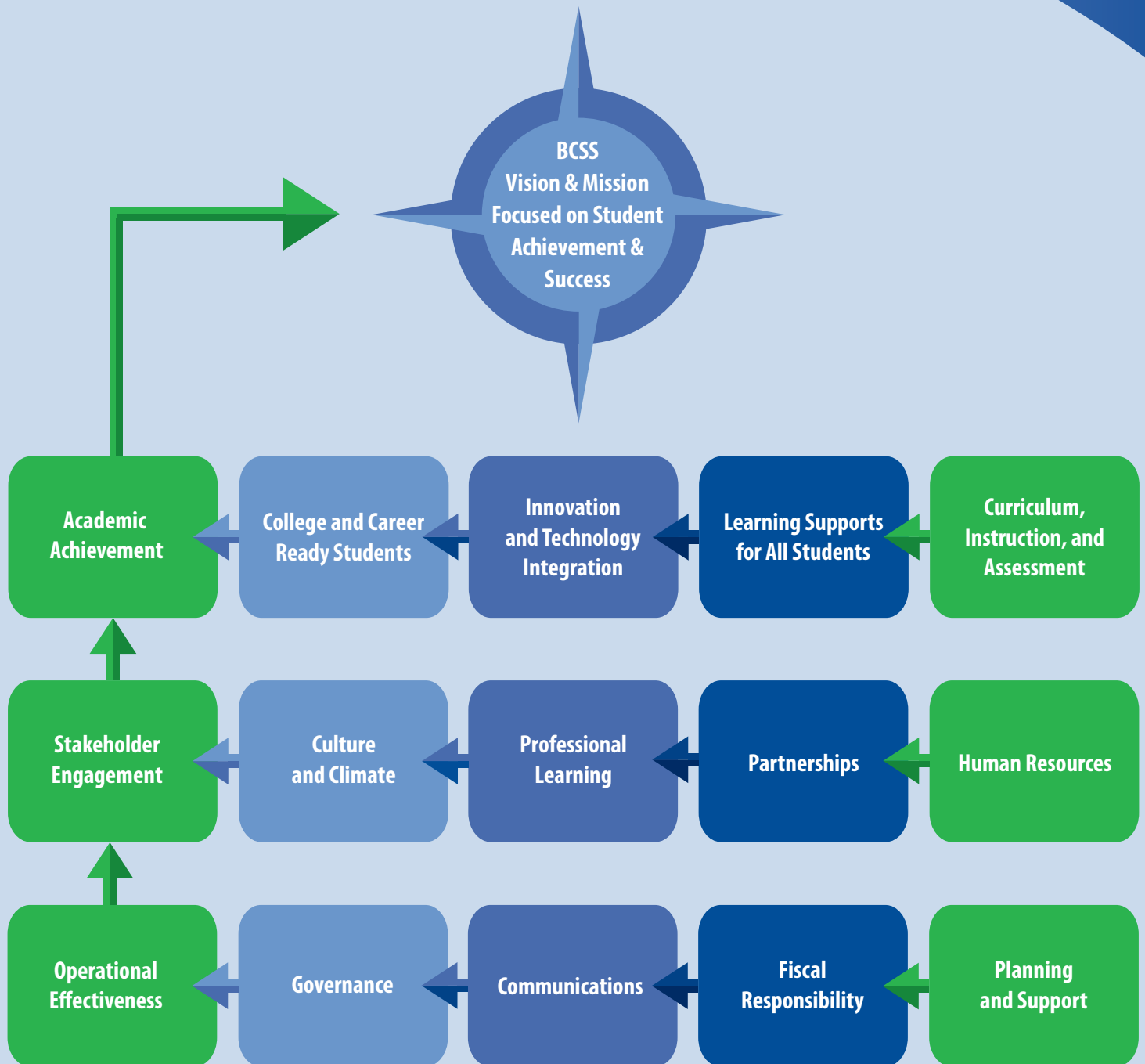
Strategic Navigation Plan

2016-2021



*Barrow County School System Department and School Improvement
2016-2021
Boldly Charting Our Course*

Improvement Plan Strategy Chart



Structure – Department and School Improvement Maps

Improvement Maps Goal Areas and Indicators

Improvement Goal Area 1: Academic Achievement

- Curriculum, Instruction, and Assessment
- Innovation & Technology Integration
- Learning Supports for All Students
- College and Career Ready Students

***Goal
Area 1***



Improvement Goal Area 2: Stakeholder Engagement

- Human Resources
- Culture and Climate
- Professional Learning
- Partnerships

***Goal
Area 2***



Improvement Goal Area 3: Operational Effectiveness

- Governance
- Communications
- Fiscal Responsibility
- Planning and Support

***Goal
Area 3***

