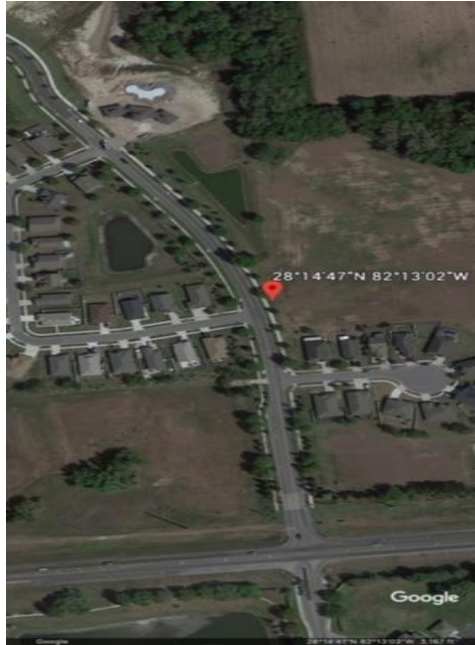


# *Silverado Poop Stations*

## Station 1

Across the street from Shady Bluff Loop.



## Station 2

Across the street from the Amenity center



Dropped Pin  
28°14'52"N 82°13'05"W - 111 ft

Measure

# Station 3

Near the bridge and pond area



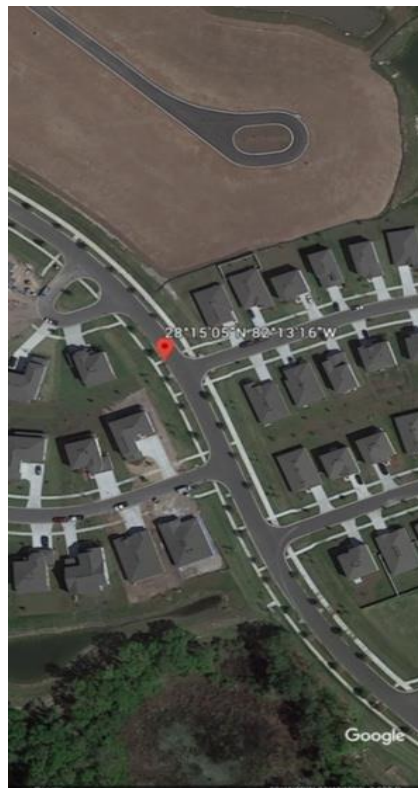
Dropped Pin  
28°15'11"N 82°13'24"W - 135 ft

Measure



# Station 4

Located across from stable Wilk Ave



# Station 5

Towards end of development where magnolia trees are planted.



Dropped Pin

$28^{\circ}15'19''\text{N } 82^{\circ}13'27''\text{W}$  - 122 ft

Measure

