

# DOWNERS GROVE GRADE SCHOOL DISTRICT 58| **REFERENDUM PROJECTS**

VISIONING

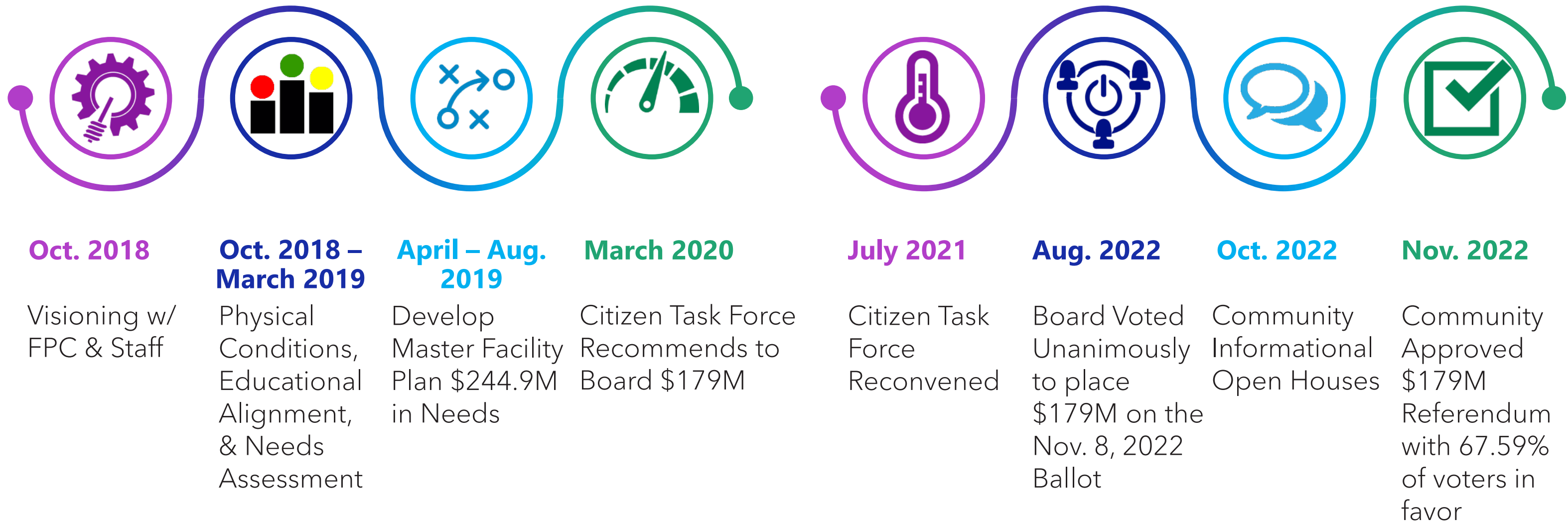
01.30.2023



**BULLEY &  
ANDREWS**

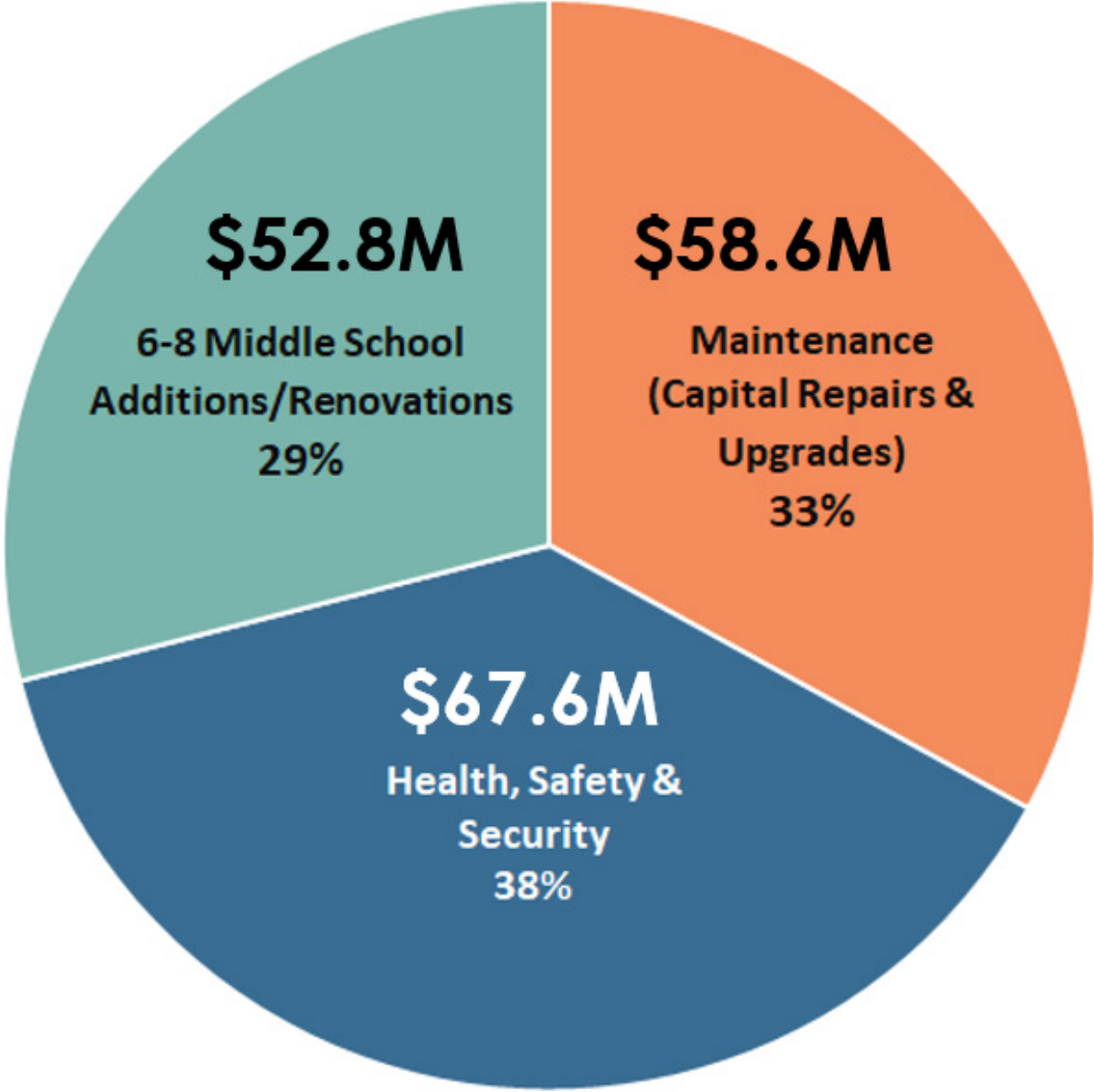


# REFERENDUM TIMELINE





# Recap \$179M Proposal



## Planned Improvements

Proposed Improvements at Each District 58 School		Belle Aire ES	El Sierra ES	Fairmount ES	Henry Puffer ES	Herrick MS	Highland ES	Hillcrest ES	Indian Trail ES	Kingsley ES	Lester ES	O'Neill MS	Pierce Downer ES	Whittier ES
Maintenance	Year Built	1969	1969	1959	1938	1953	1952	1952	1967	1963	1956	1957	1952	1928
State-Mandated Repairs:														
- Fire Alarms		●	●	●		●		●	●		●	●	●	●
- Clocks/PA/Intercom Systems		●	●		●	●	●	●	●	●	●	●	●	●
- ADA Signage		●	●	●	●	●	●	●	●	●	●	●	●	●
- Doors/Hardware		●	●	●	●	●	●	●	●	●	●	●	●	●
- Bleachers						●						●		
Roofing				●			●	●				●		
Building Envelope		●	●	●	●	●	●	●		●	●	●	●	●
Plumbing				●	●	●	●	●	●	●	●	●	●	●
Electrical Repairs/Panelboards		●	●	●		●	●	●	●	●	●	●	●	●
Bathroom Renovations		●	●	●	●	●	●	●	●	●	●	●	●	●
Health, Safety & Security														
Secure Vestibules (Entryways)		●	●	●	●	●	●	●	●	●	●	●	●	●
Comprehensive Indoor Air Quality, Heating & Ventilation Systems and Equipment Improvements		○	○	●	●	●	●	●	●	●	●	●	●	●
Air Conditioning with Required Electrical Upgrades				●	●	●	●	●	●	●	●	●	●	●
Grade 6-8 Reconfiguration (Partial Addition & Renovation of Both Herrick and O'Neill Middle Schools)														
Additional Classrooms & Science Labs to Accommodate Sixth-Grade Students						●						●		
Consolidation of Staff & Student Support Spaces						●						●		
Expansion/Remodel of Existing Cafeterias & Kitchen Additions						●						●		
Library Improvements						●						●		
Collaboration Spaces						●						●		

○ Belle Aire and El Sierra Elementary Schools are already air conditioned and require limited HVAC-related upgrades.

# First Floor Improvements



- Classroom additions
- Future ready science labs
- Collaborative learning spaces outside classroom
- Consolidation of student support services
- Cafeteria expansion & kitchen relocation
- Reconfigures student drop-off area

## Lower Level Improvements



- Classroom additions
- Future ready science labs
- Collaborative learning spaces outside classroom
- Reimagined Library
- New larger main gym

**SCALE: 1" = 80'**  
**PROPOSED FLOOR PLAN**

## First Floor Improvements



- Classroom additions
- Future ready science labs
- Collaborative learning spaces outside classroom
- Consolidation of student support services
- Cafeteria expansion & kitchen relocation
- Reimagined Library
- New larger main gym

## Second Floor Improvements



- Future ready science labs
- Collaborative learning spaces outside classroom



SCALE: 1" = 80'  
PROPOSED FLOOR PLAN



# Entrances & Offices





# LINCOLN ELEMENTARY SCHOOL

565











# Libraries















# Science











# DESIGN STUDIO





# Physical Wellness















# Core Instructional Spaces





Homework  
due Tuesday:  
Leçon A, pg 2-9

Bienvenue!  
à la classe de français

Ask:  
Où?  
Qui?  
Quand?  
Pourquoi?

A B C D E F G H I J K L M N O P Q R S T U V W X Y Z





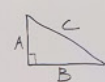








$$A^2 + B^2 = C^2$$
$$A^2 + B^2 = C^2$$
$$16 + 36 = 52$$
$$52 = C^2$$
$$C = \sqrt{52}$$
$$C \approx 7.21$$



$$A=4$$
$$B=6$$
$$C=?$$

LEARN I  
STUDY II  
GROW III



I II III IV V VI VII VIII IX X XI XII XIII XIV XV XVI XVII XVIII XIX XX XXI XXII XXIII XXIV XXV XXVI XXVII XXVIII XXIX XXX

ABCDEFGHIJKLMNOPQRSTUVWXYZ  
MNOPQRSTUVWXYZ



# **Family Consumer Science**















# Food Service











cafe





# Activities



# Activity Topics

**Rotate to Three Activities Topic Stations/ 20 Minutes Each**

- 1) Main Entrances and Office
- 2) Parking and Traffic at the Middle Schools
- 3) Middle School Libraries
- 4) Middle School Gyms and Multipurpose Spaces
- 5) Middle School Science
- 6) Middle School Culinary & Middle School Food Service
- 7) Middle School Core Instructional Spaces (*new/renovated rooms only*)



# Dot Activities

**20 Minutes**

Individually use colored dots to tell us how you feel about the pictures.

AGREE, HIGH PRIORITY



I agree; I think this is important and should be considered a High Priority item.

DISAGREE



I disagree and this is not important to me.

LOVE IT!  
HIGHEST PRIORITY



Place final blue dots on the ONE image that your group AGREES with the strongest.



# Mission/ Goals Boards

**20 Minutes**

Write on the note pads your Treasures, Trash, Fears, & Wishes

