



# OREGON AT-A-GLANCE SCHOOL PROFILE

## Oakridge Elementary School

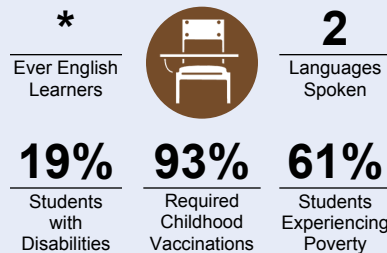
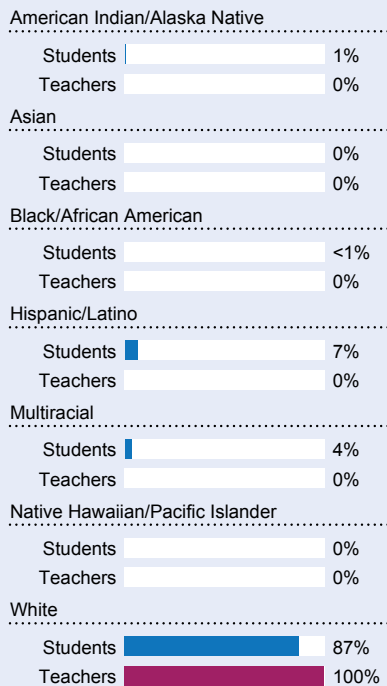
PRINCIPAL: Tina Maher | GRADES: K-6 | 48119 E 1st St, Oakridge 97463 | 541-782-3226



### Students We Serve



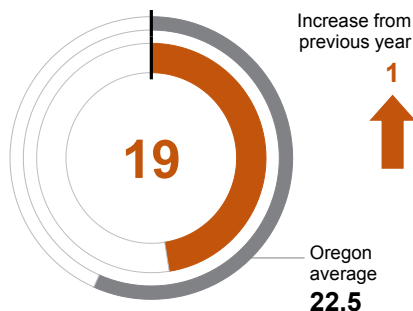
### DEMOGRAPHICS



### School Environment

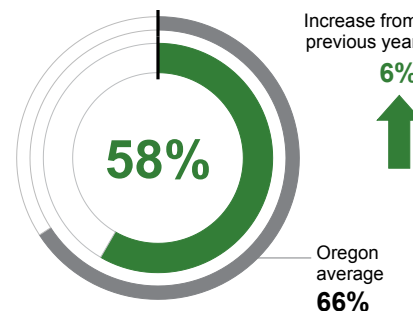
#### CLASS SIZE

Median class size.



#### REGULAR ATTENDERS

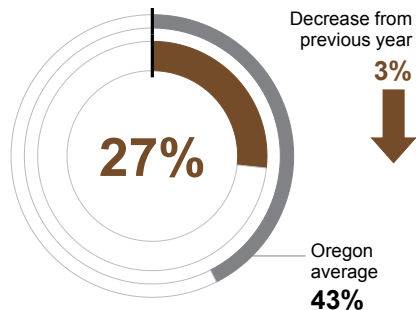
Students who attended more than 90% of their enrolled school days.



### Academic Success

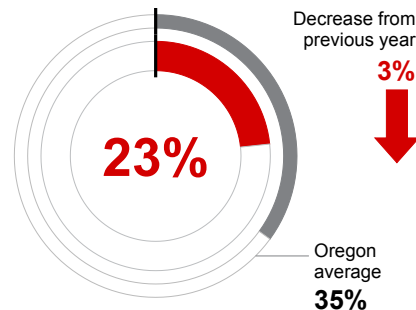
#### ENGLISH LANGUAGE ARTS

Students meeting state grade-level expectations.



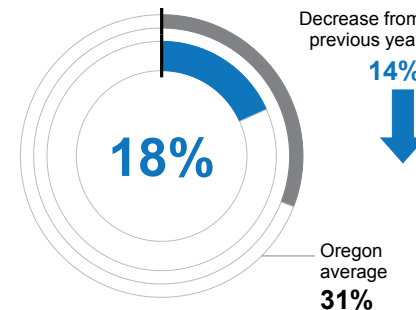
#### MATHEMATICS

Students meeting state grade-level expectations.



#### SCIENCE

Students meeting state grade-level expectations.



### School Goals

Oakridge Elementary School continues to focus on improving student achievement in Math and Reading. In addition, we have expanded our academic and Social/Emotional intervention and support process and resources for our students through a multiple tiered system of supports (MTSS). We have expanded Social/Emotional with the use of Wayfinder curriculum.

### State Goals

The Oregon Department of Education is collaborating with school districts and communities across the state to achieve a 90% on-time graduation rate by 2027. Grounded in the pillars of Academic Excellence, Belonging and Wellness, and Reimagined Accountability, ODE prioritizes evidence-based practices to boost early literacy, attendance, and student engagement. We are committed to closing opportunity and achievement gaps for marginalized students and securing long-term success for all of Oregon's learners by investing in culturally responsive practices, fostering inclusive environments and always driving for continuous improvement.

### Safe & Welcoming Environment

Student safety is always our primary concern. We continue to use the Standard Response Protocols from the "I Love You Guys" foundation. The school has made great strides in shoring up the building security with the installation of new fire system along with key card readers for all exterior doors. Staff focused on positive recognitions, social emotional learning and supports, and supporting students.



# OREGON AT-A-GLANCE SCHOOL PROFILE CONTINUED

## Oakridge Elementary School

### Outcomes

#### Our Staff (rounded FTE)



**16**

Teachers



**5**

Educational assistants



**0**

Counselors/  
Psychologists/  
Social Workers



**81%**

Average teacher retention rate over the past three years



**47%**

% of licensed teachers with more than 3 years of experience



**No**

Same principal in the last 3 years

#### REGULAR ATTENDERS

American Indian/Alaska Native	<10 students or data unavailable
Asian	<10 students or data unavailable
Black/African American	<10 students or data unavailable
Hispanic/Latino	50%
Multiracial	27%
Native Hawaiian/Pacific Islander	<10 students or data unavailable
White	61%
Students Experiencing Poverty	53%
Ever English Learner	<10 students or data unavailable
Students with Disabilities	48%
Migrant	<10 students or data unavailable
Homeless	46%
Students in Foster Care	<10 students or data unavailable
Military Connected	<10 students or data unavailable
Talented and Gifted	<10 students or data unavailable
Female	57%
Male	60%
Non-Binary	<10 students or data unavailable

#### ENGLISH LANGUAGE ARTS

<10 students or data unavailable
<10 students or data unavailable
<10 students or data unavailable
<10 students or data unavailable
<10 students or data unavailable
<10 students or data unavailable
28%
25%
<10 students or data unavailable
<5%
<10 students or data unavailable
29%
<10 students or data unavailable
<10 students or data unavailable
<10 students or data unavailable
29%
24%
<10 students or data unavailable

#### MATHEMATICS

<10 students or data unavailable
<10 students or data unavailable
<10 students or data unavailable
<10 students or data unavailable
<10 students or data unavailable
<10 students or data unavailable
24%
20%
<5%
<10 students or data unavailable
19%
<10 students or data unavailable
<10 students or data unavailable
<10 students or data unavailable
23%
24%
<10 students or data unavailable

#### About Our School

##### BULLYING, HARASSMENT, AND SAFETY POLICIES

OES using PBIS, Positive Behavior Interventions and Supports. This program provides systems and processes to support students with common expectations, instruction for all students and support for students as needed. Each week the Student Services Team meets and reviews and plans academic and behavior support for students.

The District, in partnership with HOOTS, Whitebird Clinic and Orchid Health, provides small and large group mental health and social emotional support.

##### EXTRACURRICULAR ACTIVITIES

OES student may participate in student leadership, football, volleyball, basketball, wrestling, softball, baseball, T-ball, and robotics.

##### PARENT ENGAGEMENT

Parent engagement is valued in Oakridge. Our parents are active in our site council, booster club, and parent and school activities. Each year community members donate countless hours to our athletics and activities field trips.

##### COMMUNITY ENGAGEMENT

Our community provides strong and valued support to our school. Our community participates in surveys, town hall meetings, and in person strategy sessions to give input on the needs and strength of our programs. We have a strong athletic culture. Many of our parents and their parents participated in athletics in our district. We also have a strong group of retired Oakridge teachers who are unselfishly available to support our schools. Throughout the year there are various activities that bring the school and community together. These include; the School Resource Fair, Food distributions in partnership with Food for Lane County, Emergency shelter resources within the high school for our community.