

Park Ridge – Niles School District 64

21st Century Classrooms

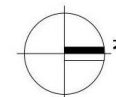
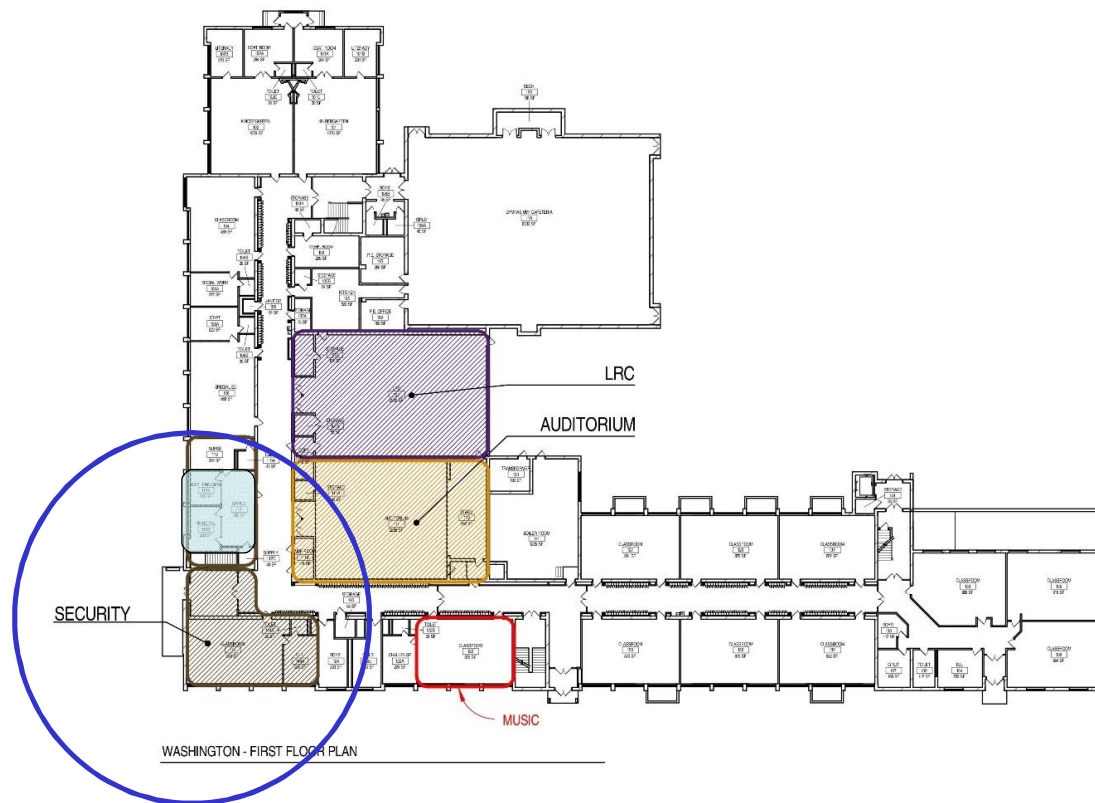
District 64 – Summer 2016

The secured vestibule project in summer 2016 offers a unique opportunity to also begin creating 21st century learning classrooms as part of District's 2020 Vision Strategic Plan.

District 64 – Summer 2016

- “ 4 Classrooms renovated as part of office reconfiguration
 - Washington (1 room)
 - Field (1 room)
 - Roosevelt (2 rooms)
- “ Renovations include finishes and new dimmable LED lighting.
- “ Flexible furniture options will be reviewed with administration and schools in next few weeks.

Washington Elementary School

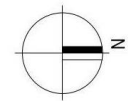
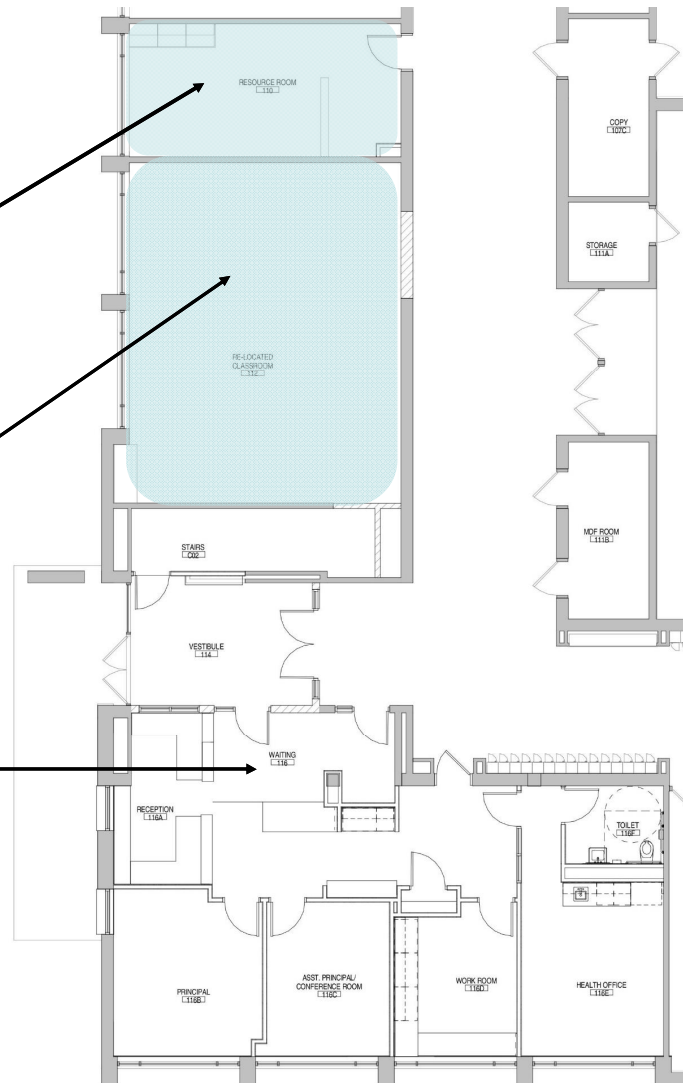


Washington Elementary School

**New Resource
Room**

**New
Classroom**

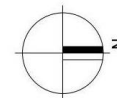
New Office



Field Elementary School



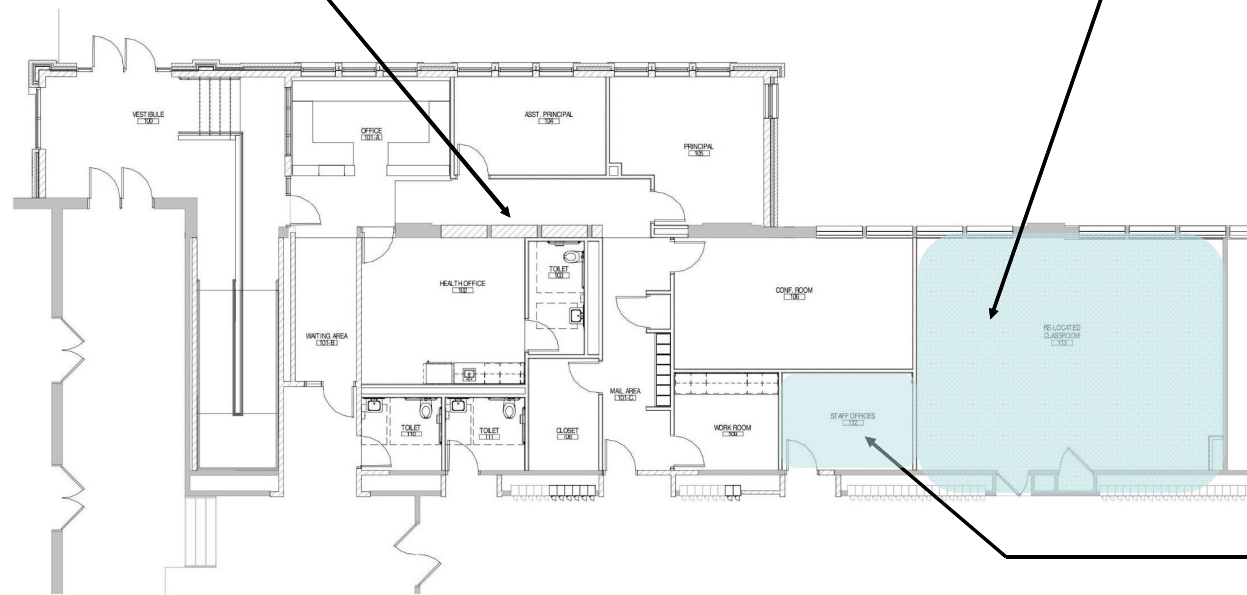
FIELD - FIRST FLOOR PLAN



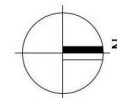
Field Elementary School

New Office

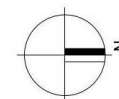
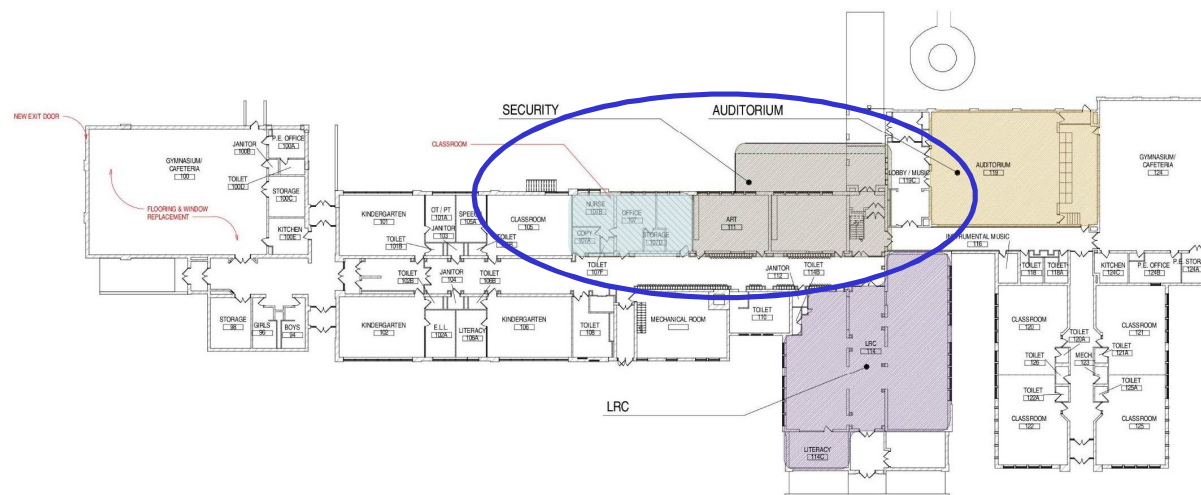
**New
Classroom**



**New
Resource
Room**



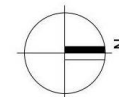
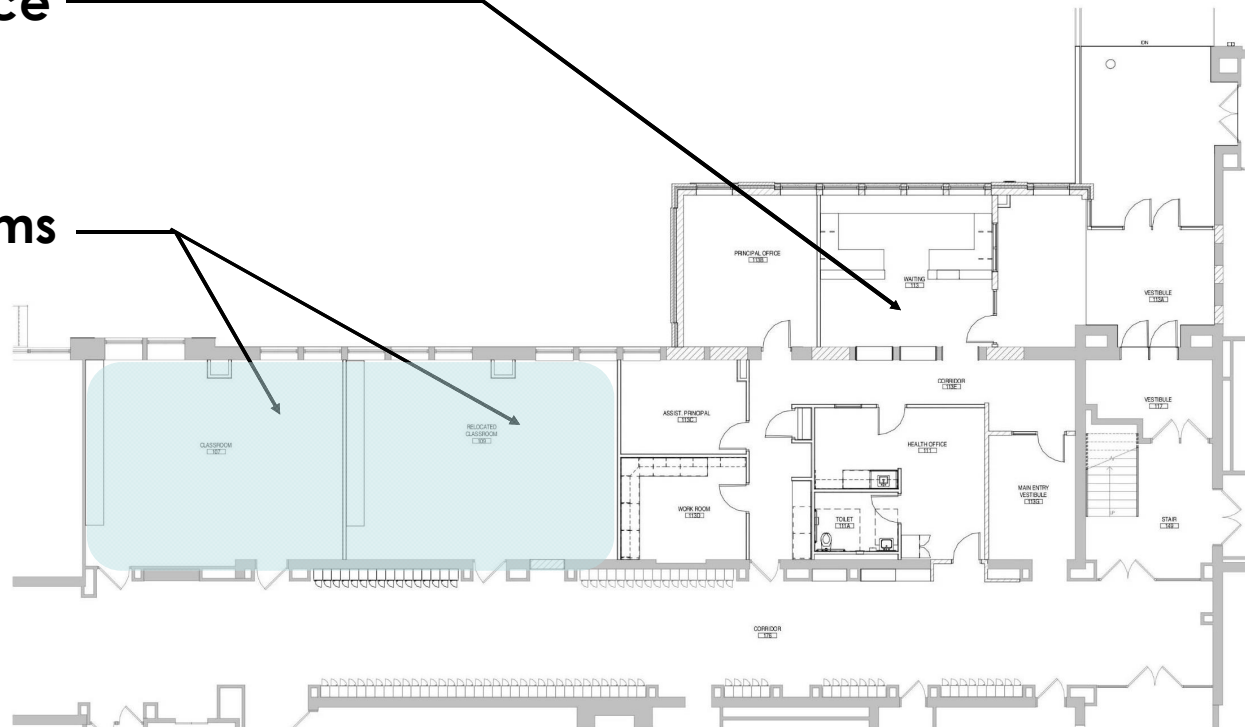
Roosevelt Elementary School



Roosevelt Elementary School

New Office

New Classrooms



District 64 – Summer 2016

- 21st Century Classrooms
 - Collaborative, Problem Solving, Laboratory, Studio
 - Teacher no longer gate keeper of content but catalyst to curiosity and inquiry.
 - Flexible Space that foster 4 C's among students and staff.
 - Technology
 - Inquiry-based learning units that require students to flow from activity to activity.

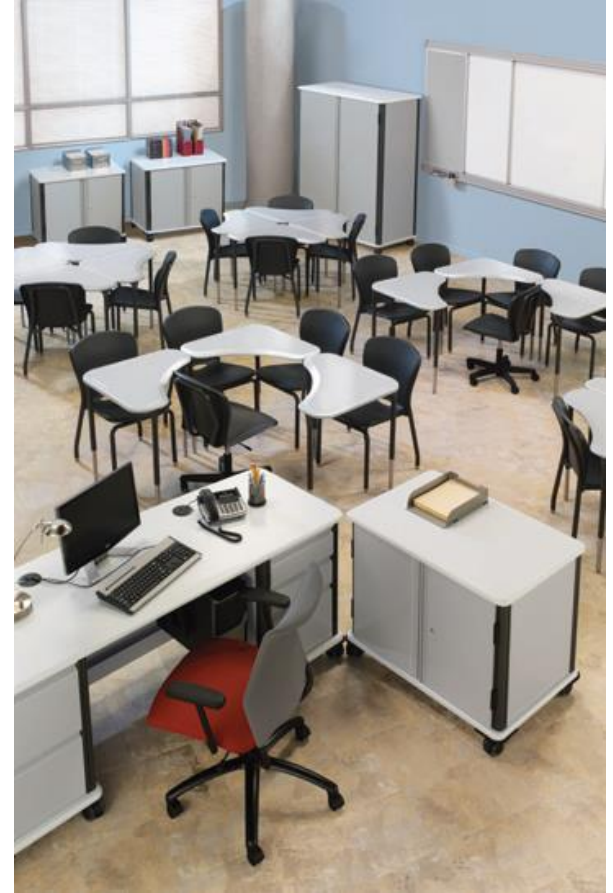
Furniture For Education

- Ergonomics – When you're **comfortable** you can concentrate better. Respect different physical + learning needs.
- Flexibility – **Agile** environments to support changes in teaching ideas. Multiple solutions. Easy to reimagine.
- Value – Durable, cost effective, **easy to live with**. Everyone loves using it and it becomes the new favorite!
- Success – Enhance spaces that students and teachers want to be in. Support needs. **Inspire creativity**.

How Do You Teach?

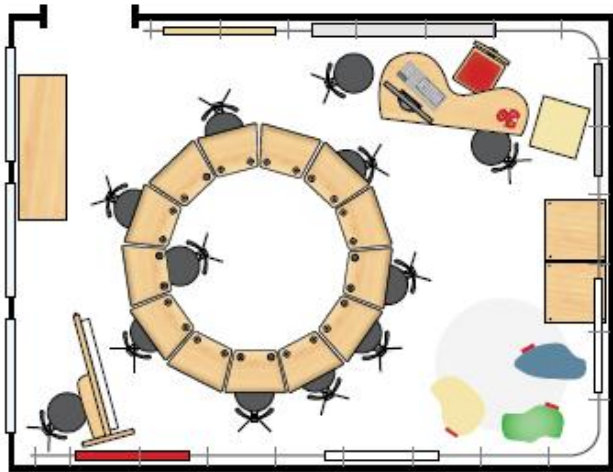


Lecture or Team?
Probably both.

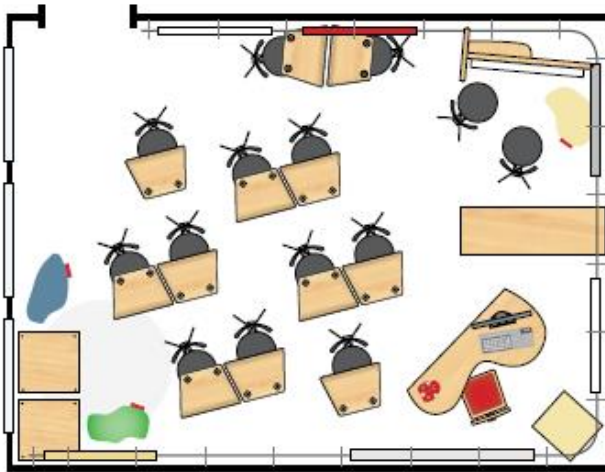


How Do You Teach?

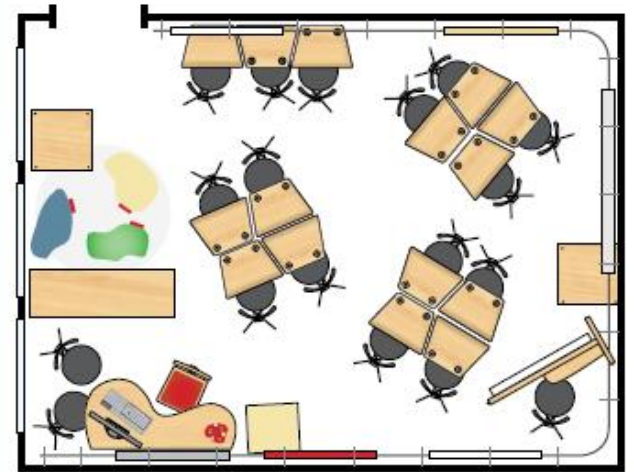
TEAM



PAIRS



PEERS



All of the above? How many students are in a room?

SIS USA.com

How Do You Teach?

imagine the possibilities..

SIS is the pioneer in adapting educational furniture to individuals' unique learning styles. The ultimate flexibility of the furniture contributes to meeting the needs of every student and teacher.

teaching station



stage system



literary solutions



activity tables



cost-effective flexibility

All SIS educational products are backed with an industry leading 20 year warranty! The reality schools and communities face today is one of limited resources for a future of limitless change. School equipment and furnishings must support a range of changing requirements that guarantees a return on investment in the future.

soft seating



with SIS
the possibilities
are endless!

classroom.solutions



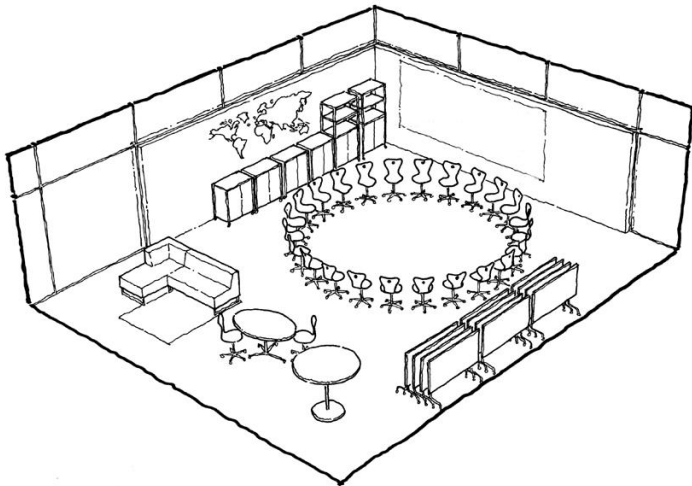
800.374.7438 • 603.432.4495 • 603.434.8456 • www.SISUSAinc.com

© 2009 SIS-USA inc.

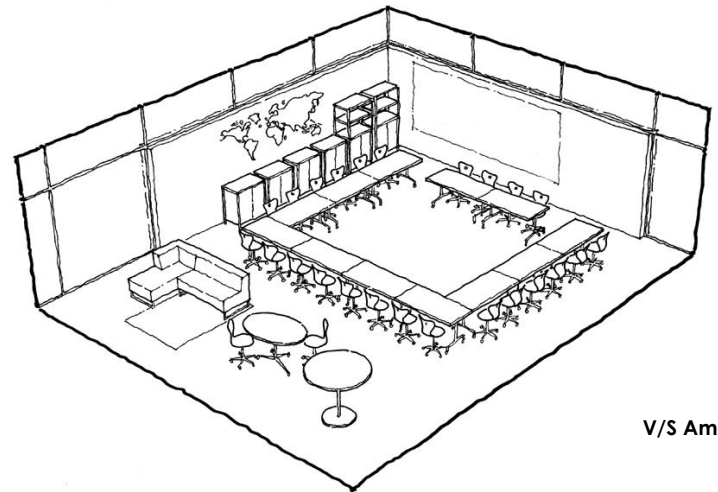
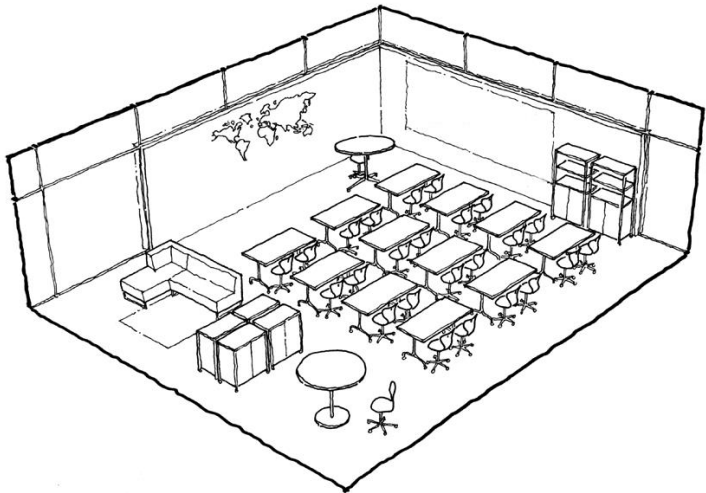
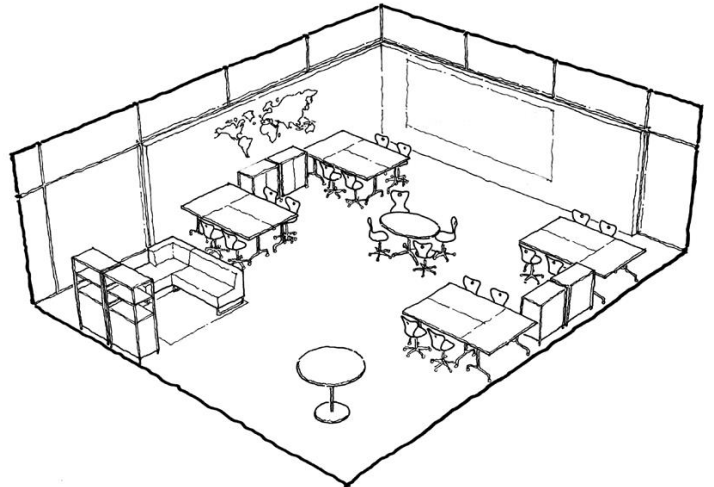
FGM ARCHITECTS

January 2016
COPYRIGHT 2016 FGM ARCHITECTS

How Do You Teach?



How easily
do your
classrooms
flex + morph
throughout
the day?



V/S America

What Technology Do You Use?

Smart Board?
Mondo Pads?
1:1 Tablets or Laptops?
Charging carts?



FGM ARCHITECTS

January 2016
COPYRIGHT 2016 FGM ARCHITECTS

Tables Encourage Interaction



January 2016
COPYRIGHT 2016 FGM ARCHITECTS

Sit To Stand Worksurfaces

“Sitting is the new smoking”. Ready to do something about it?



All classroom desks at Vallecito Elementary School, in San Rafael, have been replaced with standing desks.

Sit + Stand + Move



FGM ARCHITECTS

stand
upkids

• Normal weight kids burn between 15-25% more calories at standing desks.

January 2016
COPYRIGHT 2016 FGM ARCHITECTS

Mix It Up – Add Variety

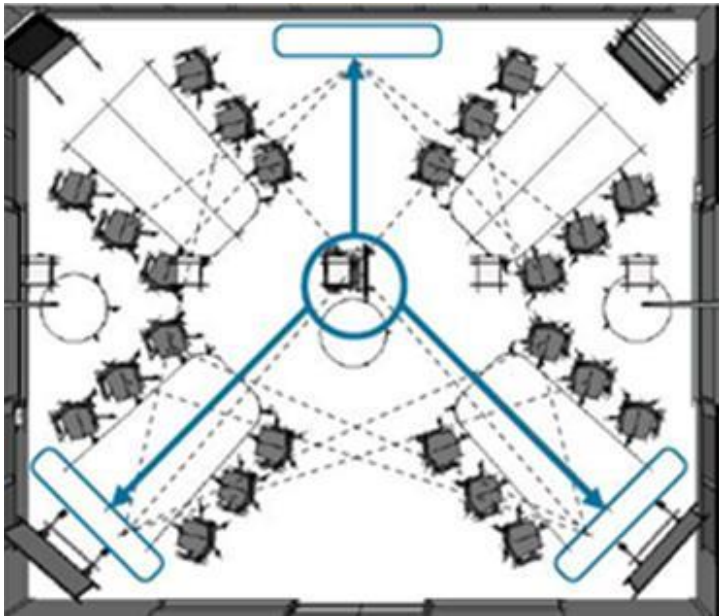


Everything doesn't have to match.

Consider offering a **variety** of work surfaces to support different activities and different learning styles.

X Configuration Classrooms

- ” No front of room.
- ” Teacher in center.
- ” Groups encourage peer-to-peer mentoring.

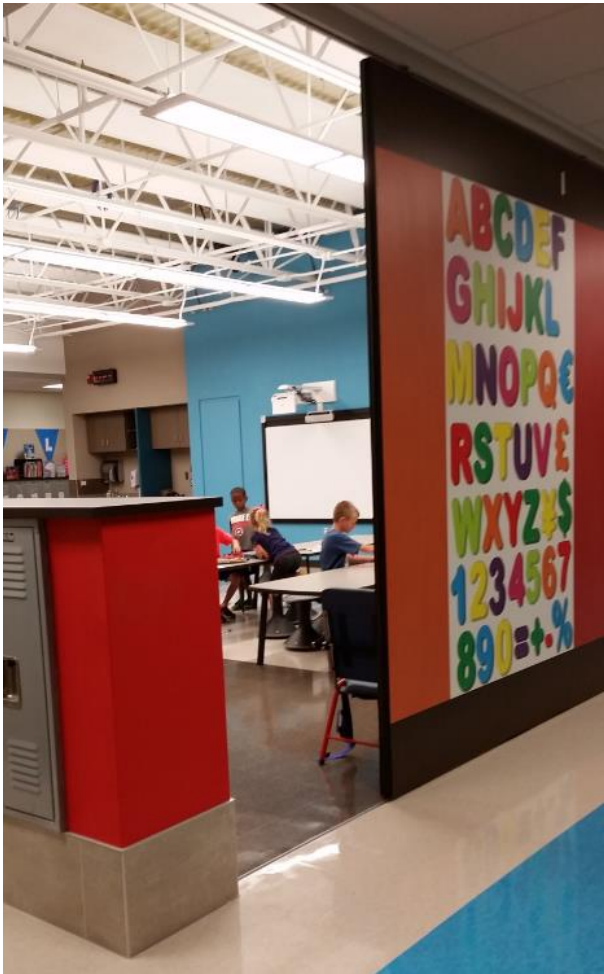


Alternative Seating



Extended Learning Areas

Encourage **exploration** with flexible spaces for collaborating and creating.



Mobile Teaching Boards

Support small groups with **mobile** marker surfaces.



Steelcase



MooreCo

Teacher Furniture

Forget the heavy, double pedestal desks of the past – think open, **inviting** and mobile.



Teacher Furniture



Smith System Cascade

Storage doesn't have to be built-in. **Mobile cabinets** are cost-effective and offer flexible room layouts.

FGM ARCHITECTS

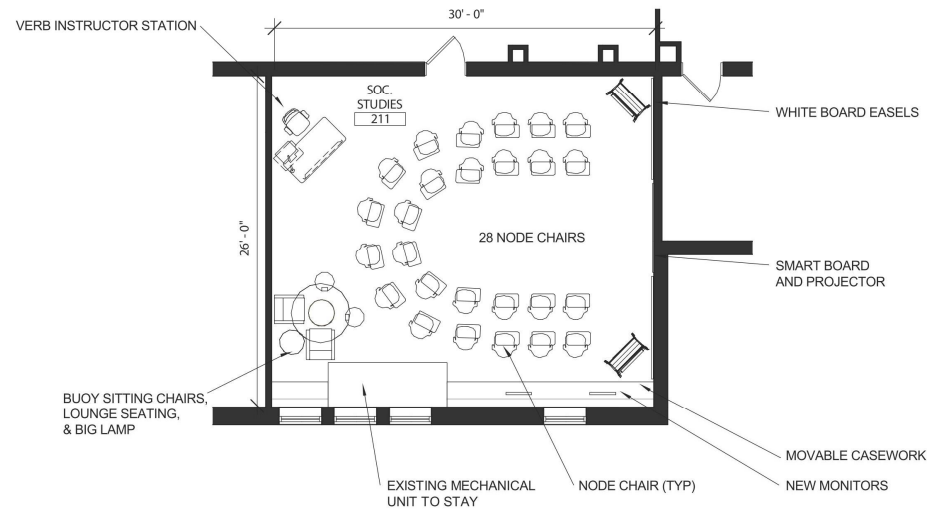
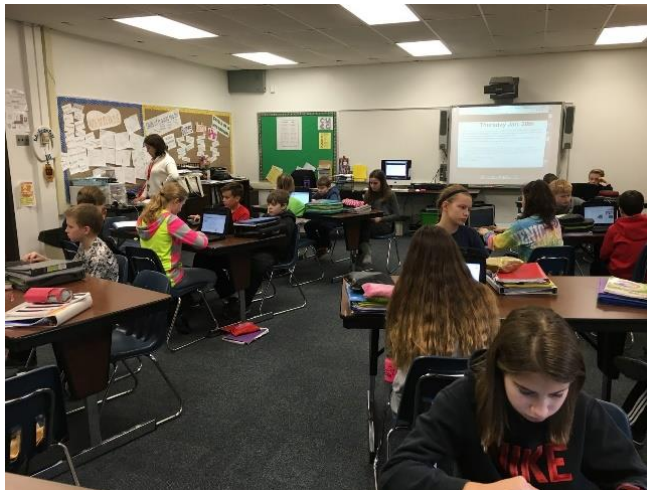
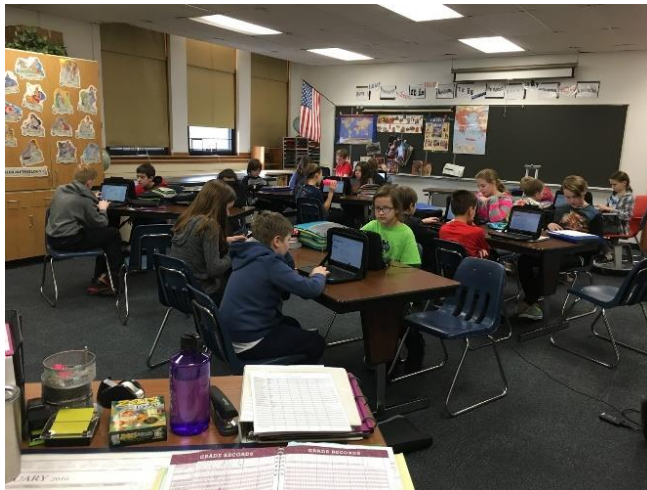


Marker boards on the backs can increase teaching surfaces.



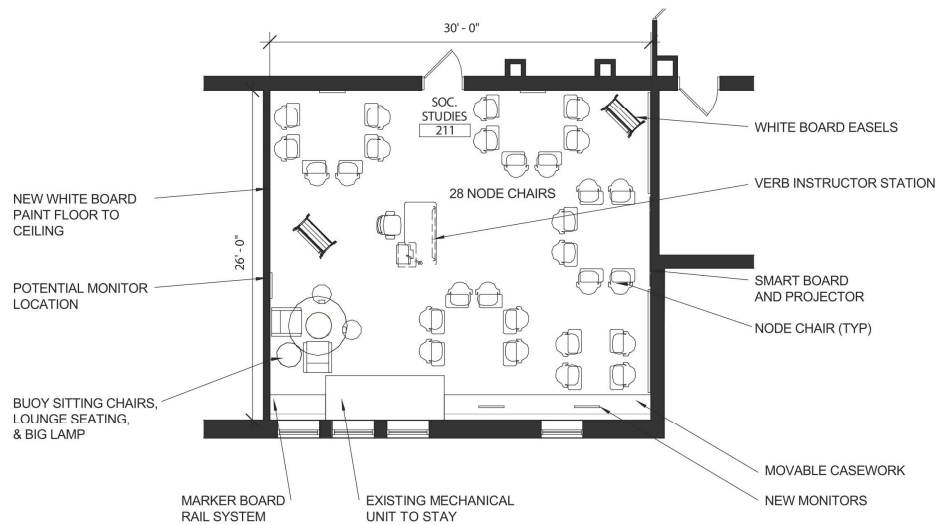
January 2016
COPYRIGHT 2016 FGM ARCHITECTS

Lincoln Middle School

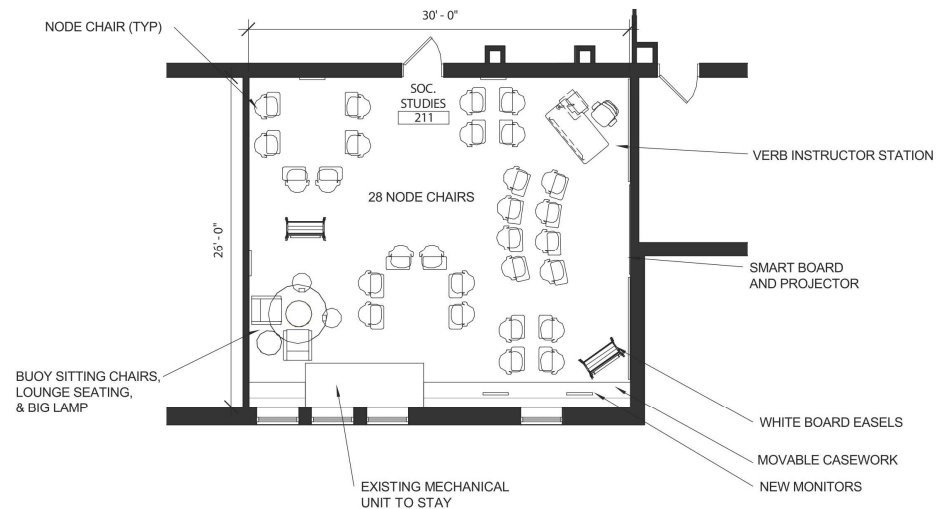


Large Group

Lincoln Middle School



X - Configuration



Combination

Elementary Examples



Elementary Examples



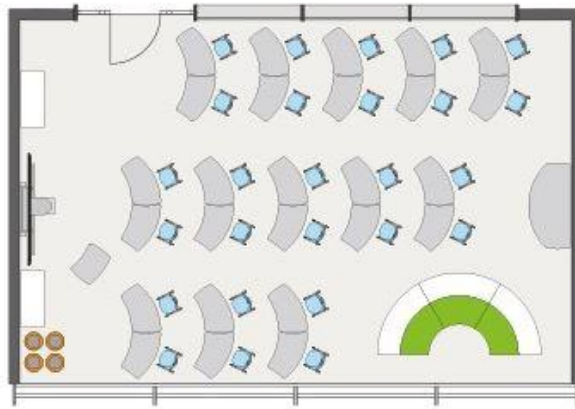
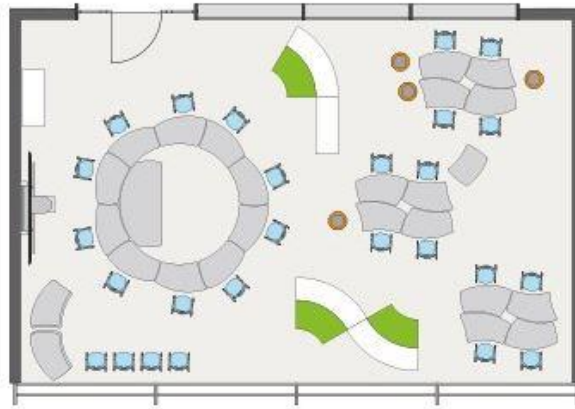
Elementary Examples



Elementary Examples



District 64 – Summer 2016



Thank You