



PREVENTING THE SUMMER SLIDE

May 12, 2016

HELLO

Taryn Handlon

Library Information Specialist
Roosevelt School

thandlon@d64.org

Linda Diekman

Instructional Technology Coach
Roosevelt School

ldiekman@d64.org



Tell me and I forget.

Teach me and I remember.

Involve me and I learn.

Benjamin Franklin

**What is the
“summer slide?”**

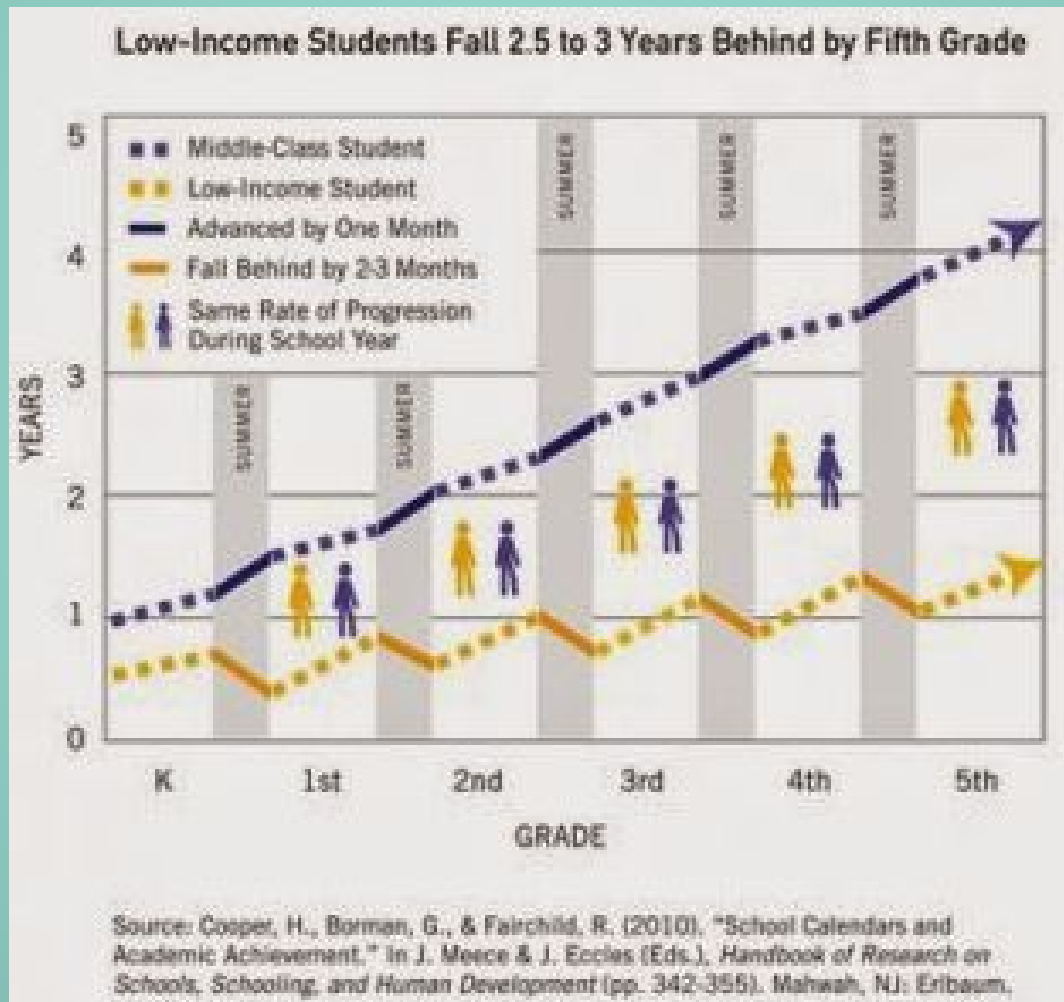
**If you don't use it,
you lose it!**



The “Summer Slide” is a real thing

- ◇ A multitude of studies
- ◇ Basic conclusion: Children make similar gains during the school year, summer readers will show little to no drop, summer non-readers drop
- ◇ The average slide is two months of reading gains
- ◇ Best readers read the most, poor readers read the least
- ◇ Best indicator of gain/loss is volume of summer reading
- ◇ Quality is also important

The “Summer Slide” is a real thing





BE PROACTIVE

What can I do?

- ◇ Practice, Practice, Practice
- ◇ Setup routines for your child to be successful
- ◇ Dedicate time to read
- ◇ Honor your child's choice
- ◇ Encourage a reading community



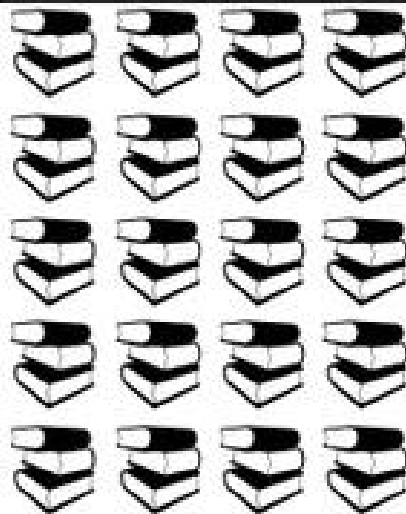
WHY READ 20 MINUTES AT HOME?

❖ Student A reads an average of 20 minutes per day.

❖ 3,600 minutes per school year.

❖ 1,800,000 words per year.

❖ Scores in the 90th percentile on standardized tests.

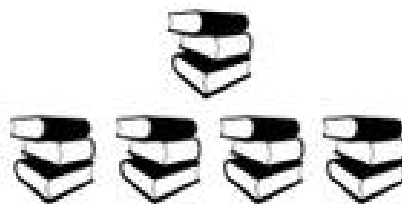


❖ Student B reads an average of 5 minutes per day.

❖ 900 minutes per school year.

❖ 282,000 words per year.

❖ Scores in the 50th percentile on standardized tests.



❖ Student C reads an average of 1 minute per day.

❖ 180 minutes per school year.

❖ 8,000 words per year.

❖ Scores in the 10th percentile on standardized tests.



If they start reading for 20 minutes per night in Kindergarten, by the end of 6th grade, Student A will have read for the equivalent of 60 school days, Student B will have read for 12 schooldays, and Student C will have read for 3.

WANT TO BE A BETTER READER? SIMPLY READ.

**WHAT DISTRICT 64
RESOURCES ARE
AVAILABLE AT HOME
OVER THE SUMMER?**



STUDY ISLAND

is an online standards-based tool helping students in 3-8 with practice, assessment, & instruction in Reading, Language Arts, & Math.

STUDY ISLAND Formula Sheet - HELP - CONTACT
Comment On Question

Problem Solving Strategies

Question: Joey wants to buy a dog priced at \$80, but Joey only has \$29. Which number sentence would you use to find out how much more money Joey needs to be able to buy the dog?

- $\$80 + \29
- $\$80 \times \29
- ★ $\$80 - \29
- $\$80 \div \29

Session Results: (2/2) 100% Attempts Left: 9 Level: 1
Overall Results: (4/7) 57.1% Score: 20 Time: 3:46

If control keys aren't working, click on the game window.



BOOK FLIX

An online literacy resource that pairs classic video storybooks from Weston Woods with related nonfiction eBooks from Scholastic to build a love of reading and learning.





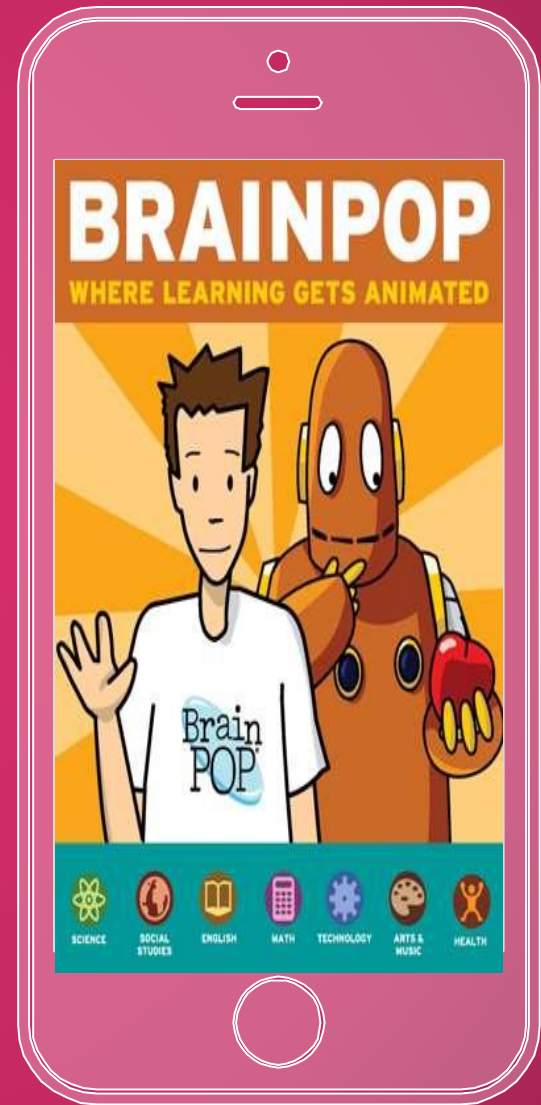
PEBBLE GO

Is an award winning pre-K to grade 3 database for reading and research. The PebbleGo database includes built-in reading and research tools for emerging readers. Leveled text, educational games, and multimedia help teach concepts to your youngest researchers.



BRAIN POP

is a group of educational websites with over 1,000 short animated movies for students in grades K-12 , together with quizzes and related materials, covering the subjects of science, social studies, English, mathematics, engineering and technology, health, and arts and music.





RAZ KIDS

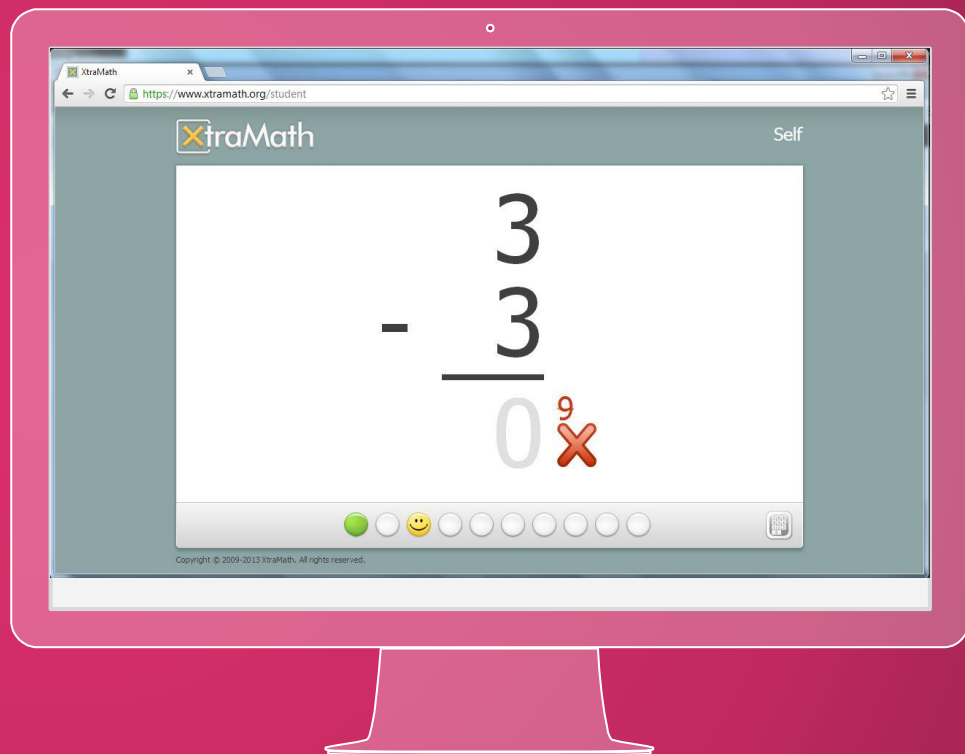
is an interactive reading tool for our K-3 students to practice reading fluency and comprehension. Each student has a username and password.





XTRA Math

is a web program that teaches addition, subtraction, multiplication and division facts which are critical to success in mathematics.



**WHAT OTHER
RESOURCES ARE
AVAILABLE IN THE
COMMUNITY?**



PARK RIDGE PUBLIC LIBRARY

20 S Prospect Ave,
Park Ridge, IL 60068
(847) 825-3123
www.parkridgelibrary.org



NILES PUBLIC LIBRARY

6060 W. Oakton Street,
Niles, IL 60714
847-663-1234
<http://www.nileslibrary.org/>



WORLDS OF WONDER

K-3 Field Elementary School
4-7 Emerson Middle School
bit.ly/wowd64



WAGNER FARM

1510 Wagner Rd,
Glenview, IL 60025
(847) 657-1506
<http://www.wagnerfarm.org/>



KOHL CHILDREN'S MUSEUM

2100 Patriot Blvd, Glenview, IL
60026
(847) 832-6600
www.kohlchildrensmuseum.org



PARK DISTRICT

<http://www.parkridgeparkdistrict.com/>

THANKS

CREDITS

Special thanks to all the people who made and released these awesome resources for free:

- ◇ Presentation template by SlidesCarnival
- ◇ Photographs by Unsplash & Death to the Stock Photo (license)