



## From the Principal's Desk

Dear Lincoln Community,

I was very pleased to give my annual presentation to the Board of Education when we hosted their monthly meeting this week. I shared how I gained a lot of perspective on Lincoln by attending the Association of Middle Level Education (AMLE) National Conference earlier this month. Having met with colleagues from around the country, I can say that our students' middle school opportunities and experience is second to none. Not only are our students experiencing academic success, but due to the strength of our elective and social-emotional programs, they have tremendous opportunity to explore new things in a positive and supportive environment.



Another highlight was seeing the Lincoln staff present to peers. Mrs. Kappos and Mrs. Jemison presented on co-teaching Language Arts, and Mrs. Thielen and Mrs. Preis presented on energizing Math instruction. Mrs. Johnson, Ms. Dabe, and I cheered them on. Both sessions were very well received, and represented Lincoln beautifully.

Since students have asked, **we do NOT dress up in costume on Halloween.** Any students wearing clothing in violation of the dress code, will have to put on their PE uniform for the day.

**Calendar Notes:** Please remember to set your clock back an hour the night of Saturday, November 6th for the end of **Daylight Savings Time**, and note that there is **no school Tuesday November 8th** due to a teacher Institute Day.

Thanks,  
Dr. Murray

To inspire every child to discover, learn, achieve, and care

*The mission of Lincoln Middle School is to meet the intellectual and developmental needs of young adolescents in a positive, safe, and multidisciplinary environment, and to prepare them for a socially responsible life in a changing global society.*

# School News

## **7<sup>th</sup> Grade Basketball News**

On Friday afternoon we walked into the gym at Elk Grove, confident to play in this tournament. We had no idea who we would end up playing. The team we ended up playing was called Sandburg. Before I knew it, it was the end of the game. We won by quite a few points. We were all happy to play two more games the next day.



We played Thomas our first game Saturday. We really played hard and gave it our all but unfortunately we suffered a tough loss. We may not have won, but we battled through and kept our heads held high. This game may have kept us from getting to the championship, but it definitely didn't keep us from giving up. We still played hard through the rest of the day and I'm really proud of what we managed to achieve and how far we've come throughout the season.

Although we were excited to have a chance to win 1<sup>st</sup> place in the Elk Grove Tournament, we were thrilled to come in 3<sup>rd</sup> place behind two very talented teams as well, South and Thomas Middle Schools. We played a very excellent game and never gave up. It might have been pretty close the first half, but we stepped up our game and worked extra hard to shut Plum Grove out. We were presented with a trophy, and many compliments after that, satisfied, with our hard work. I think we all had plenty of baskets and very good plays the whole tournament, which should make us very proud. I'm so happy our team is what we are now, and we have really improved over the last few weeks. Let's keep it that way, and win some more games! I am so proud of our team this year and I think we are doing really good, so far. Thanks for all your support.

Written by: Alana Burke, Katie Brander, Emily Pape



## **Student Faculty Co-ed Volleyball Tournament**

Our 7<sup>th</sup> annual intramural Student Faculty Co-ed Volleyball Tournament will be starting right after Thanksgiving break. We have close to 40 teams competing every year. The dates for each pool of the tournament and team roster sheets will be available next week from your PE teachers. Pool listings will be posted on the bulletin board outside the gym. The top 4 teams from each pool will play in the Championship tournament. Captains are responsible for making sure your team shows up for the 2 dates of your pool play.

## School News

# TEEN LEISURE CLUBS

## *Trimester One*

LINCOLN STAFF	DAYS OF WEEK	NAME OF CLUB
Mr. Widing	Friday	Chess
Sebo & Manzi	1st Thurs.	Soup Kitchen
Chesney	Tuesday	Star Wars
Moore	Thurs.	Electricity & Electronics
Antonucci	Tues./Thurs.*	French club
Schmidt	Tuesday	Dragon Sky Animation
Skidmore	Tuesday	Gymnastics
Bruton	Monday	Washington Helpers
Reeder	3rd Thurs.	Literary Lions
Preis & Reeder	Mon., Tues. & Thurs.	Makerspace
Moore	Tuesday	Math & Manufacturing
Ms. Migon	Friday	RC Club

***Note:*** See the Lincoln Staff member for room location & other details.

# 6<sup>th</sup> Grade Social

## 2016 6<sup>TH</sup> GRADE SOCIAL



**OCT 28<sup>th</sup>**  
**FRIDAY NIGHT**  
**7 PM to 9 PM**



**LINCOLN**  
**MIDDLE**  
**SCHOOL**

### IF YOU DARE ... BE SEEN HERE

**CAUTION: ONCE IN, YOU MUST STAY UNTIL THE STRIKE OF 9:00!**

**\$5 CASH Fee**



- **Pay CASH at the door / No preregistration**



**Student phones**  
**Will be kept at**  
**the table near**  
**the entrance**



**FUN For Everyone**

- **Wear Your Costume**
- **Eat Pizza & Snacks**
- **Dance/DJ Music**
- **Play Games & Win Prizes**
- **Watch Cubs Game**
- **Hang Out With Your Friends**



# Developmental Screenings



## School District 64 Early Childhood Diagnostic Team

Jefferson School, 8200 N. Greendale, Niles, IL 60714  
Phone: (847) 318-5360, Fax: (847) 318-5442



## 2016 - 2017 Developmental Screenings

**School District 64 offers monthly free developmental screenings for children age 2yrs 9mos through 5yrs 11mos who live in the School District 64 community.**

(All screening appointments for preschoolers age 2 and 9 months through age 5 and 11 months are on Tuesdays at 9am, 10am, or 11am unless stated otherwise. Call the Jefferson School Office at [\(847\) 318-5360](tel:8473185360) for more information or to make an appointment for a screening.)

..November 1  
..December 6  
..January 17

..February 14  
..March 14  
..April 11  
..May 9

Meet with our Early Childhood Diagnostic Team and find out how your child's early cognitive, social-emotional, communication, and motor skills are developing.

**CALL US TODAY TO MAKE AN APPOINTMENT!**

SD64 Developmental  
Screening  
(847) 318-5360

SD64 Developmental  
Screening  
(847) 318-5360

SD64 Developmental  
Screening  
(847) 318-5360

SD64 Developmental  
Screening  
(847) 318-5360

SD64 Developmental  
Screening  
(847) 318-5360

SD64 Developmental  
Screening  
(847) 318-5360

SD64 Developmental  
Screening  
(847) 318-5360

SD64 Developmental  
Screening  
(847) 318-5360

SD64 Developmental  
Screening  
(847) 318-5360

SD64 Developmental  
Screening  
(847) 318-5360

SD64 Developmental  
Screening  
(847) 318-5360

SD64 Developmental  
Screening  
(847) 318-5360

# ELF News

**Support D64 Schools with a Family Movie Outing!**  
*Take your family to the movies while raising money for innovative projects in D64 schools!*

**D64 ELF Fundraiser at the Pickwick**  
**Saturday, November 5 at 10 a.m.**  
**5 S. Prospect Ave, Park Ridge**

 **DREAMWORKS**



**Only \$10!**  
Includes movie  
ticket, small  
popcorn, and  
juice box!



**ELEMENTARY LEARNING FOUNDATION**

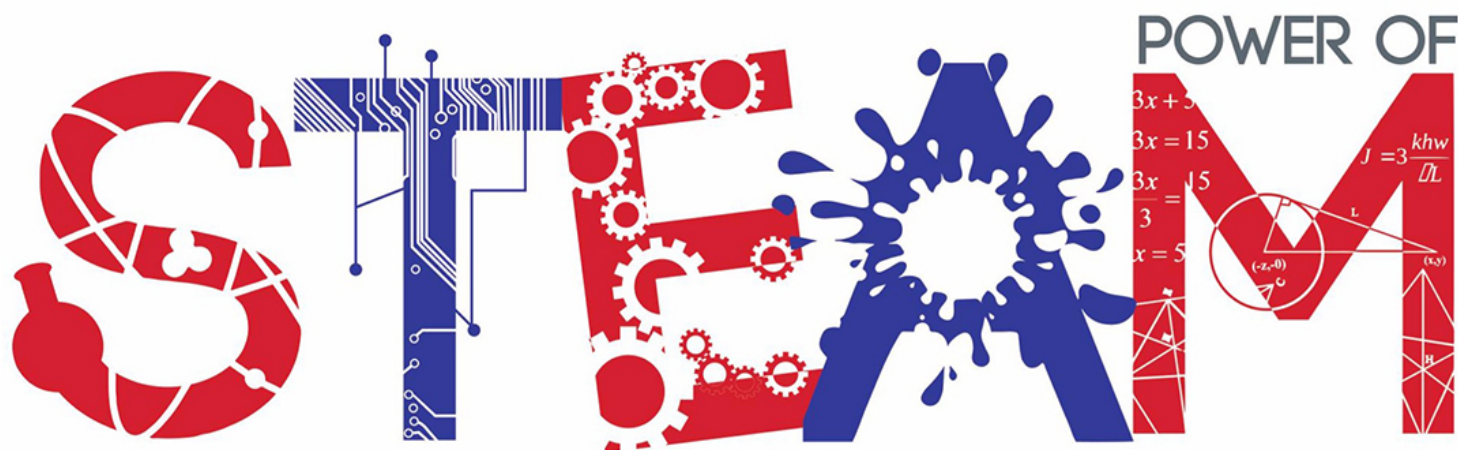
HELPING DISTRICT 64 REACH NEW HEIGHTS / [district64elf.org](http://district64elf.org)

**Guarantee your spot online now at**  
**[district64elf.org](http://district64elf.org) or purchase Nov. 5 from the**  
**D64 ELF table inside the Pickwick lobby.**

**25% of all proceeds directly benefit D64 ELF**



## Parent University



SCIENCE TECHNOLOGY ENGINEERING ART MATHEMATICS



Hosted at

Lincoln Middle School

Learning Resource Center (LRC)

200 S. Lincoln Avenue in Park Ridge

This program is geared towards families with school-aged, grades K-8 students.

Families are invited to an evening of

## Making, Coding & STEAMing

*(Science, Technology, Engineering, Arts, and Math)*

Members of the D64 Technology Team are facilitating a **hands-on night of exploration!** You will get to know the first elementary and middle school **MakerSpaces**, try **coding** with your family, and learn about the fundamental ideas behind our **innovation and design mindset**. Families will have the opportunity to learn and problem-solve **through exploration and play**. Bring your thinking cap and your imagination!

**Computer Science helps nurture creativity and problem-solving.**

Join the Maker Movement

## Wednesday, Nov 9th, 2016

## 6:00pm to 7:00pm

Facilitated by Megan Preis & Kevin Michael  
D64 Instructional Technology Coaches

Parent University Series 2016-17



# Donation Drive

## MAKER NIGHT MATERIALS DRIVE

WEDNESDAY NOV. 9TH 6-7PM @ LINCOLN MIDDLE SCHOOL LRC

PLEASE HELP US COLLECT MAKER MATERIALS!

DROP OFF MATERIALS AT ANY SCHOOL OFFICE  
AT ANY TIME.

**\*\*Duck/Duct Tape Rolls** - - - - - **\*\*Masking Tape**

**\*\*Construction/Colored Paper** - - - - - **Markers, Crayons, Colored Pencils**

**Child-safe scissors** - - - - - **Misc. Craft materials (glue, pipe cleaners, etc.)**

*\*\*Denotes most needed supplies*

Families are invited to an evening of

### **Making, Coding & STEAMing**

*(Science, Technology, Engineering, Arts, and Math)*

Members of the D64 Technology Team are facilitating a **hands-on night of exploration!** You will get to know the first elementary and middle school **MakerSpaces**, try **coding** with your family, and learn about the fundamental ideas behind our **innovation and design mindset**. Families will have the opportunity to learn and problem-solve **through exploration and play**. Bring your thinking cap and your imagination!



**Computer Science helps nurture creativity and problem-solving.**

**Join the Maker Movement**



### CONTACT INFORMATION

If you have any questions or comments, please contact:

Megan Preis (Lincoln) [mpreis@d64.org](mailto:mpreis@d64.org)

Kevin Michael (Carpenter) [kmichael@d64.org](mailto:kmichael@d64.org)

Lincoln Middle School  
200 S. Lincoln Avenue  
Park Ridge, IL 60068



# Kiwanis Club Fundraiser

## Kiwanis Clubs of Park Ridge Holiday Food Basket Fundraiser for District 64 Families in Need



Harp & Fiddle

110 Main Street, Park Ridge

THE HARP & FIDDLE

Wednesday, November 9, 2016

4 p.m.—10 p.m.

.....

When you dine at Harp & Fiddle on November 9 from 4-10p.m. and tell the server you are with the Kiwanis Club, 20% of your total bill will be donated to the Kiwanis Clubs. All funds raised that evening will go towards providing holiday food baskets to those families in District 64 that fall below the poverty level. Please show your support for those families by dining at Harp & Fiddle or by sending a cash donation to the Kiwanis Holiday Food Basket Fundraiser c/o Kiwanis President Frank Kaminski, 200 S. Vine, Park Ridge, IL 60068.

# School Closing Information

## School Closing Guidelines Winter 2016-17

### Wind-chill is a key factor in our closing guidelines.

District 64 coordinates guidelines with other elementary and high school districts in our community (62, 63, 79 and 207). The Superintendents work together on closing decisions for severe weather-related conditions or other emergency situations.

### Safety is our priority

Our first priority is the safety of students and staff. At the same time, we know that closings create child care and work schedule problems for families. Districts understand that individual views of weather-related closings vary, and that not everyone will always agree with district decisions. For many reasons, we prefer to keep schools open. In deciding, Superintendents consult with local municipal departments and use National Weather Service data. Some factors we consider include:

- ✦ safety of students and staff
- ✦ severity of weather (extreme cold, flooding, etc.)
- ✦ timing of the weather
- ✦ ability of vehicles to travel safely and ability of students to walk to and from school safely
- ✦ operable condition of our buildings and ability to maintain safe conditions around the buildings, sidewalks and parking lots



Here's to a safe  
winter ahead!

### Wind-chill is a key factor

Wind-chill notices from the National Weather Service are the primary meteorological source to determine and declare weather conditions, such as snow forecasts, wind-chill advisory, or wind-chill warning.

- ✦ **Advisory** - Schools will be in session when a wind-chill advisory is issued. A wind-chill advisory is typically issued when the wind chill is -20 degrees F or colder. The weather during a wind-chill advisory is not life threatening, but presents conditions that may result in inconvenience or pose moderate risk to safety.
- ✦ **Warning** - In contrast, schools will be closed under the condition of a wind-chill warning, which indicates life-threatening conditions and a risk to safety exists. Measures should be taken to safeguard life and property immediately. A wind-chill warning is typically issued when the wind-chill will be -30 degrees F or colder OR the actual temperature is -15 degrees F or colder.

### How we inform parents and staff of closings

When a decision is made to cancel school, parents and staff can expect to receive an automated phone call and email. It is the parent's responsibility to provide up-to-date contact information and/or preferences to the school office. **School closing decisions will usually be made by 6:00 a.m. This allows Superintendents to monitor weather overnight and avoid unnecessary closures.** Weather closing information also is available through: District 64 and school websites; recorded on District and school phone messages; [www.emergencyclosingcenter.com](http://www.emergencyclosingcenter.com); and broadcast on TV and radio stations.

### Your family situation. . .

Any decision to cancel school or alter the school day is based on general safety conditions for all students and staff. Districts know that conditions may vary for each student or family. If, in the event of severe weather when schools are open, you feel it is unsafe to send your student to school, please contact the school office.

# Casino Night

**DISTRICT 64 ELEMENTARY LEARNING FOUNDATION'S**

# CASINO NIGHT

**A NIGHT  
OF  
GOOD  
FORTUNE**



**TICKETS:**

**\$100 each until**

**January 16<sup>th</sup>**

**\$125 thereafter**

**Buy online at**

**[www.district64elf.org](http://www.district64elf.org)**

**CAFÉ LA CAVE**

**2777 S MANNHEIM RD**

**DES PLAINES, IL**

**6:30pm - 11:30pm**

**Proceeds support innovative & imaginative education programming for D64 schools**

**SATURDAY JANUARY 28, 2017**