

NAME: _____
GRADE: _____
ADVISOR: _____

Elm Middle School

7607 West Cortland Avenue Elmwood Park, IL 60707 Office Phone: 708-452-3550

2016 - 2017 Student Handbook

Dr. Kathleen Porreca, Principal
Mr. Cody Huisman, Assistant Principal

Homework Online

http://elm.epcusd401.org/school_resources/elm_homework_page

ELMWOOD PARK COMMUNITY UNIT SCHOOL DISTRICT 401
708-452-7292

www.epcusd401.org

BOARD OF EDUCATION

Board of Education Vision Statement

To inspire minds in the pursuit of excellence.

Board of Education Mission Statement

Elmwood Park CUSD 401, a unit district in a suburban community with a small town feel, strives to cultivate:

- Individualize Social-Emotional learning processes
- Rigorous academics fostering inquisitive minds prepared for critical thinking
- Active, engaged partnerships with the community and parents
- Innovative uses of 21st century technologies for teaching and learning.

CURRENT BOARD MEMBERS

Mrs. Mary Bruscato, President
Mr. Frank J. Parisi, Vice President
Mrs. Susan Capraro, Secretary
Mrs. Lauren M. Platt
Mrs. Andrea A. Sciullo
Mrs. Cynthia A. Stazzone
Mr. Peter A. Volpe

DISTRICT ADMINISTRATORS

Dr. Kevin Anderson, Superintendent of Schools	708-583-5831
Dr. Nicolas Wade, Assistant Superintendent: Curriculum & Instruction	708-583-5836
Mr. Tom Zelek, Business Manager	708-583-5840

DISTRICT POLICIES FOR STUDENT HANDBOOKS

Elmwood Park Community Unit School District #401

These policies are available online at www.epcusd401.org and in the principal's office

STUDENT FEES

School fees were approved by the School Board with the expectation that they would be paid by each family. A \$30 fee will be assessed for all returned and NSF checks. The registration fees along with other monies due to the school (lost books, book fines, etc.) must be paid in full by **October 1** (or 30 days after registering a new student to the district).

FEE REFUNDS

Less than or equal to First week of school 75%
Less than or equal to 2nd week 50%
Less than or equal to 3rd week 25%
Less than or equal to 4th week 0

TABLE OF CONTENTS

Absences.....	7
Academic Advisory Program.....	7
After School Activities.....	7
Assemblies.....	8
Athletic Eligibility Policy.....	8
Behavioral Terms	15
Bell Schedules.....	5 - 6
Bicycles, Roller Blades, Skateboards, Scooters.....	8
Board of Education.....	2
Bullying	8
Bus Expectations.....	9
Cell Phones.....	9
Discipline Expectations.....	9 - 10
District Policies for Students.....	2
Dress Code.....	10
Email addresses for Faculty.....	4
Faculty.....	4
Field Trips	10
Fire Exits and Emergency Procedures.....	10
General School Information.....	4
Grading.....	11
Graduation/Promotion Policy.....	11-12
Hall Passes.....	12
Homework/Make-Up Work.....	12
Homework Online.....	12
Honor Roll.....	12
Instruction.....	12
Library Media Center.....	12
Lockers/Book Bags.....	13
Lost Material Policy.....	13
Lunchroom.....	13
Maps of Elm Middle School.....	17 - 19
Markers.....	13
Mission Statement.....	2
National Junior Honors Society.....	20
PBIS Matrix.....	16
Phone Numbers.....	4
Photographs/Videotaping of Students.....	13
Report Card/Powerschool	13
School (District) Calendar.....	21
School Day.....	13
School Fees.....	2, 10-11
School Property.....	13
Seizure of Property.....	14
Special Education Services.....	14
Student Identification Cards.....	14
Tardy to School.....	14
Valuables in School.....	14
Vision Screening.....	15
Visitors.....	15

ELM MIDDLE SCHOOL: General Information

MAIN OFFICE:

Office Phone
Attendance Hotline

Hours 7:30am – 4:00pm

708-452-3550
708-583-6600

Office Fax

708-452-0662

SCHOOL HOURS:

Morning Entrance Time
Warning Bell
First Class Starts
Afternoon Dismissal
Bus Departure
Late Bus Departure

M, T, R, F

7:45 am
7:52 am
7:55 am
3:05 pm
3:15 pm
4:15 pm

W

8:55 am
9:02 am
9:05 am
3:05 pm
3:15 pm
4:15 pm

OFFICE STAFF:

Dr. Kathleen Porreca, Principal
Mr. Cody Huisman, Assistant Principal
Ms. Danielle Yager, Principal's Secretary
Mrs. Julie Wasilewski, Attendance Clerk

Ms. Katie Koselke, Social Worker
Ms. Amy Clef-Holic, School Nurse
Mrs. Kim Devore, Media Center Specialist
Mr. Nick Anast, Head Custodian

TEACHING FACULTY:

Bartolomei, Elena
Bultas, Matt
Byrne, Colleen
Cannici, Gina
Cannici, Sam
Dunbar, Laura
Flanagan, Eileen
Fuentes, Kathy
Furst, Joe
Hartwig, Christian
Hawes, Susan
Hong, Molly
Kazuk, Kristin
Korteling, Karen
Koselke, Katie
Kushner, Dave
Laux, Laura
Lite, Michelle
Mesi, Tiffany
Mrkvicka, Steve
Mueller, Laura
Obrecht, Emily
O'Mahoney, Nora
Peterson, Sara
Poppewell, Michael
Quirk, Meghan
Rhodes, Kyle
Richter, Greg
Rode, GERALYNNE
Thomas, Clare
Triska, Darlene
Walsh, Meg
Woods, Katie

Bartolomeie@epcusd401.org
Bultasm@epcusd401.org
Byrnec@epcusd401.org
Cannicig@epcusd401.org
Cannicis@epcusd401.org
Dunbarl@epcusd401.org
Flanagane@epcusd401.org
Fuentesk@epcusd401.org
Furstj@epcusd401.org
Hartwigg@epcusd401.org
Hawess@epcusd401.org
Hongm@epcusd401.org
Kazukk@epcusd401.org
Kortelingk@epcusd401.org
Koselkek@epcusd401.org
Kushnerd@epcusd401.org
Lauxl@epcusd401.org
Litem@epcusd401.org
Mesit@epcusd401.org
Mrkvickas@epcusd401.org
Muellerl@epcusd401.org
Obrechte@epcusd401.org
OMahoneyn@epcusd401.org
Petersons@epcusd401.org
Poppewellm@epcusd401.org
Quirkm@epcusd401.org
Rhodesk@epcusd401.org
Richterg@epcusd401.org
Rodeg@epcusd401.org
Thomasc@epcusd401.org
Triskad@epcusd401.org
Walshm@epcusd401.org
Woodsk@epcusd401.org

Language Arts 8
Special Education 7
Special Education 8
Health 7/8
Social Studies 7
Language Arts 7
Special Education 7
Language Arts 8
Special Education 8
Social Studies 8
Social Studies 7/8
Language Arts 8
Special Education 7
Art 7/8
Social Worker
Physical Education 7/8
Math 8
Math 8
Language Arts 7
Science 7/8
Math 7
ELL 7/8
Special Education 8
Math 8
Music 7/8
Math 7
Band/Music 7/8
Science 7
Science 8
Math 7
Computer Applications 7/8
Physical Education 7/8
Language Arts 7



Elm Middle School Daily Bell Schedule

Students Enter Building	7:45		
1st Bell	7:52		
Exploratory	7:55	to	8:27
Block 1	8:30	to	9:50
Block 2	9:53	to	11:13
Block 3a	7th Lunch/8th Advisory	11:16	to 11:46
Block 3b	8th Lunch/7th Advisory	11:49	to 12:19
Block 4		12:22	to 1:42
Block 5		1:45	to 3:05
After School Check Out		3:05	to 3:08
Bus Departs		3:15	
Late Bus Departs		4:15	

LATE START Wednesday Bell Schedule

Students Enter Building	8:55		
1st Bell	9:02		
Block 1	9:05	to	10:16
Block 2	10:20	to	11:31
Block 3a	7th Lunch/8th Advisory	11:34	to 12:04
Block 3b	8th Lunch/7th Advisory	12:07	to 12:37
Block 4		12:40	to 1:51
Block 5		1:54	to 3:05
After School Check Out		3:05	to 3:08
Bus Departs		3:15	
Late Bus Departs		4:15	





Assembly Bell Schedule

70 Minute Classes – No Exploratory

Students Enter Building	7:45		
1st Bell	7:52		
Block 1	7:55	to	9:05
Block 2	9:08	to	10:18
Block 4	10:21	to	11:31
Block 3a	7th Lunch/8th Advisory	11:34	to 12:04
Block 3b	8th Lunch/7th Advisory	12:07	to 12:37
Block 5		12:40	to 1:50
Advisory, then Gymnasium		1:53	to 3:05
After School Check Out		3:05	to 3:08
Bus Departs		3:15	
Late Bus Departs		4:15	



ELM MIDDLE SCHOOL: EXPECTATIONS

Please Note: Student Handbook rules are subject to change without notification

GENERAL EXPECTATIONS

Elm Middle School is a PBIS school. It is proud of the appropriate behavior your child exhibits throughout the school year. We stress positive reinforcements. It is in your child's best interest that parents and teachers work together. Appropriate behaviors have positive rewards.

Elm Middle School advocates the philosophy that students should be given the responsibility to make decisions and to be responsible for their actions. When a student inhibits the right of others to learn or for the teacher to teach, he/she must accept the consequences for his/her action.

GENERAL CONSEQUENCES

Teachers will create a classroom discipline system that may include correction of the student, warnings, parent phone calls, classroom detentions, conferences and/or other measures. If a student exhausts this classroom discipline system, the teacher may use a Disciplinary Referral to refer the student to the assistant principal for consideration. The assistant principal will assign appropriate consequences. A copy of the referral is placed in the student's temporary discipline file. If a student fails to serve a detention with a teacher, the teacher will reschedule it and may add another detention. If the student fails to serve the rescheduled or additional detention the matter will be referred to the office. The faculty and staff reserve the right to remove any student from an after school event, or any other activity if they believe that the child's behavior poses a risk.

All staff and students will refer to the PBIS Matrix to guide positive behavior in classrooms, hallways, bathrooms, busses, outside and in the cafeteria.

ABSENCES

When a student is absent, it is a parent's responsibility to contact the school before 8:30 AM the morning of each day's absence. Parents can call during office hours (7:30 AM – 4:00 PM) or can leave a message on the voice mail (452-3550). If notification concerning a student's absence is not received within 24 hours, the student will be considered truant. If there is to be an extended absence due to reasons other than illness, a note to that effect from parents prior to the absence needs to be sent to the school. When a parent is going on vacation, out of town, etc., and a student will be under the care of someone else, the parent must notify the office of the name and phone numbers of that caretaker. If a student is absent 5 or more days consecutively due to illness, the student must bring a note from the doctor to be allowed back to school. Further, at the request of the school administration, a student may be asked to produce a doctor's explanation for an unusual attendance pattern.

After the 10th absence (excused or unexcused), a letter will be sent to the home and the parent will be contacted by the building administration.

After the 20th absence, a second letter will be sent home and a conference will be held with the parents, the students and the building administration.

Students are never to leave the building without personally informing the office of their departure. Families are discouraged from taking their children on vacation during the school year. Please attempt to schedule vacation around school holidays.

ACADEMIC ADVISORY PROGRAM

The purpose of Academic Advisory is to provide students with academic as well as social/emotional support. Parents requesting a conference should contact the student's Academic Advisor.

ACTIVITIES

Activities are provided so that students can participate in sports and various special interest groups. An activity bus is provided at 4:15 PM in order to provide transportation to home schools. **An Elm Middle School photo ID must be presented to ride the bus.** Students participating in before-school activities must plan for their own transportation to Elm. We also have some evening activities at Elm such as PAT dances. These events are open to Elm students only. Remember that we ask for the same quality of conduct as expected

during the school day. The student must notify parents of the required pick-up time. Those students who are not picked up promptly at the conclusion of after school activities may be excluded from attending such activities in the future. Any student who leaves school grounds will not be permitted to ride the activity bus.

It is understood that 8th grade students must meet all graduation requirements to be eligible for end-of-year activities. Final approval to attend these activities will be decided by the 8th grade team and the administration. Parents need to encourage their children to behave appropriately to earn the right to participate in school-sponsored special events. Any one or all activities (including participation in graduation ceremonies) may be withheld from students up to the day of the event.

ASSEMBLIES

A variety of all-school assemblies are held throughout the school year to broaden students' learning experiences. Students are to go to the assemblies as a class and to be seated as directed by teachers. While in the assembly, students are expected to honor our guests with courteous and polite behavior and refrain from excessive noise, whistling, shouting, foot stomping, etc. Also, at the conclusion of the program, students are to wait for dismissal and then exit in an orderly fashion.

ATHLETICS: ELIGIBILITY

Before a student athlete may try out for any of the sports teams he/she must have a valid and current physical form on file in the nurse's office. Any student participant failing to meet these academic criteria will be notified of the failing grade and have one week to bring the grade up. If the grade is not remedied, the student shall be suspended for a minimum of one week from the activity until the specified academic criteria is met. Furthermore, any student who is ineligible for any two week period (out of an 8 week season) may be dismissed from the team. The following guidelines are also used to determine ineligibility for participation in specific extracurricular activities of our school:

- Absence from school on the date of designated activity, due to illness and/or unexcused reasons will exclude students from participation in that activity. Students with a medical excuse must be in attendance for at least one half of a school day to participate in an athletic contest.
- Extreme misbehavior/disrespect toward teacher/peers or a significant number of detentions and/or any suspensions may result in exclusion from activities.
- Coaches reserve the right to impose additional eligibility requirements on their students.
- The administration will coordinate eligibility within the school building.

BICYCLES, ROLLER BLADES, SKATEBOARDS, SCOOTERS

No roller blades, skateboards, or scooters are allowed to be ridden on school grounds.

BULLYING

Definition of Bullying:

"Bullying means any **severe** or **pervasive** physical or verbal act or conduct, including communications made in writing or electronically, directed toward a student or students that has or can be reasonably predicted to have the effect of one or more of the following:

1. Placing the student or students in reasonable fear of harm to the student's or students' person or property;
2. Causing a substantially detrimental effect on the student's physical or mental health;
3. Substantially interfering with the student's or students' academic performance;
4. Substantially interfering with the student's or students' ability to participate in or benefit from the services, activities or privileges provided by a school."

Illustrative and non-exhaustive list:

- Harassment, threats, intimidation, stalking, physical violence, sexual harassment, sexual violence, theft, public humiliation, destruction of property, and retaliation.

Bullying involves:

- A desire to hurt another person, physical pain or emotional pain, an attempt to gain power (perceived or actual), repeat offending, and when a victim cannot stop bullying.

Cyberbullying is simply the medium in which the bullying occurs

Forms of Bullying

- Direct (physical act against another or verbal abuse)
- Indirect (relational or cyber)

Function of Bullying

- Social recognition (peer acceptance or parental acceptance)
- Ability to get something from the person being bullied (demean to get a significant other, obtain homework, etc.)

BUS EXPECTATIONS

Students being transported on a bus are under the direct authority of the bus driver and school administration. Expectations for student behavior on the bus are the same as for any school setting because of the public and personal danger of inappropriate bus behavior. **Students must show an Elm Middle School photo ID to board the bus.** Students are expected to stay seated, exhibit respectful behavior and keep arms and head inside of the bus. Students are not to throw objects. The principal or a designee will be responsible to assign the appropriate consequence. Responses may vary depending upon the severity of the misbehavior.

Students are only allowed to ride the bus that is assigned to them. This is to ensure the proper capacity, and safety of knowing who is on which bus. Only students living north of the railroad tracks are assigned to a bus. Students may not cross the railroad tracks to board an Elm bus. Students will be given appropriate consequences if they do not follow these expectations.

CELL PHONES

Cell phones may be used before and after school only.

Students may not use their cell phones to call or text parents during the school day. All students with health concerns must report to and go through our school nurse. Students will be given consequences for using their cell phones to request an early dismissal without reporting to the nurse.

Disciplinary responses will vary as to the severity and frequency of the infractions. Parental support and cooperation are essential for the maintenance of a quality learning environment. Texting and use of a cell phone is distracting to the educational process.

DISCIPLINE

Elm Middle School teaches students expected behaviors. Elm practices PBIS – (Positive Behavior Interventions and Supports.) This philosophy encourages students to follow the expectations established by school staff. PBIS provides interventions to students who have difficulty with certain behaviors.

These grounds for disciplinary action apply whenever the student's conduct is reasonably related to school or school activities, including, but not limited to:

1. On, or within sight of, school grounds before, during, or after school hours or at any other time when the school is being used by a school group;
2. Off school grounds at a school-sponsored activity, or event, or any activity or event which bears reasonable relationship to school;
3. Traveling to or from school or a school activity, function or event; or
4. Anywhere, if the behavior or activity results in disruption of the educational environment.
5. Activities that take place electronically, including, but not limited to: cell phones, computers, gaming systems, etc.

Conduct we believe does not enhance these standards, and is therefore inappropriate, includes, but is not limited to:

- Smoking or the possession and/or use of controlled substances/alcohol/smoking materials (including e-cigarettes)/drug paraphernalia
- Intimidation/bullying/threats

- Disruptive classroom and hallway behavior
- Vandalism/graffiti
- Dishonesty/cheating
- Stealing or attempting to steal school/personal property
- Tardiness
- Using electronic equipment during school hours
- Physical contact such as pushing, shoving, fighting, including play fighting, hugging and other public displays of affection
- Being a member of or joining or promising to join, or becoming pledged to become a member of, soliciting any other person to join, promise to join, or be pledged to become a member of any public school fraternity, sorority or secret society
- Involvement in gangs or gang-related activities, including the display of gang symbols or paraphernalia
- Eating or drinking in the hallway, except the morning breakfast purchased in the front hallway

We encourage acceptance of all races, genders, ethnicities and sexual orientation. No student shall physically harm any other student or adult.

If any items not allowed in school are found in their possession, the student assigned to the locker will face disciplinary consequences for having possession of the item.

Disciplinary responses will vary as to the severity and frequency of the infractions. Parental support and cooperation are essential for the maintenance of a quality learning environment.

DRESS CODE

For safety and educational reasons, there are some clothing items that can not be worn to school:

- Clothing may not contain inappropriate words, photos, or adult content, including reference to drugs or alcohol.
- Pants must be worn at the waist & belts should be worn.
- Shirts that are strapless are not appropriate for school.
- Midriffs must be covered.
- Skirts and shorts need to be of the style and length that are appropriate for the school environment.
- Flip flop sandals are NOT to be worn at any time.
- Slippers are NOT to be worn at any time.
- Tattoos must be covered at all times.
- Ear piercings are the only piercings allowed. Students will be required to remove piercings that are NOT in the ears.

When a student wears inappropriate clothing to school, parents will be contacted to bring acceptable clothing to school for them to change into.

FIELD TRIPS

Field trips are part of our curriculum and all students are required to attend. Field trips do cost additional money for each student. Each field trip we attend or host is an essential part of a student's overall educational experience at Elm.

FIRE EXITS AND EMERGENCY PROCEDURES

Teachers will advise students of the exits and proper procedures to be followed when they are asked to evacuate the school. The fire signal is a loud buzzing sound that cannot be mistaken. Students should stay with their class and move quietly in single file away from the building. Students may re-enter the building only after the all-clear signal has been given. In case of a tornado or severe weather warning, students may be asked to move to a more sheltered area of the school or "duck for cover" outside of the classroom.

FEES

Any request for refunds will need to be made to the Principal (or his/her designee) using the following refund policy:

Less than or equal to the First Week of School	75% of the payment can be refunded
Less than or equal to the Second Week of School	50% of the payment can be refunded

Less than or equal to the Third Week of School	25% of the payment can be refunded
Less than or equal to the Fourth Week of School	0% of the payment can be refunded

For the purposes of this policy, “school fees” or “fees” mean any monetary charge collected by the District from a student or the parent(s) or guardian(s) of a student as a prerequisite for the student’s participation in any curricular or extra-curricular program of the District. The District does not impose a “fee” when it requires that a student provide his or her own ordinary supplies of materials (e.g., pencil, paper, notebooks), which are necessary to participate in any curricular or extra-curricular program.

“School Fees” include, but are not limited to, the following:

- A All charges required for textbooks and instructional materials.
- B All charges and deposits collected by a school for use of school property
- C Charges for field trips made during school hours, or made after school hours if the field trip is required or a customary part of a class or extra-curricular activity (e.g., annually scheduled trips to museums, concerts, places of business and industry or field trips related to instruction in social studies, the fine arts, career/vocational education, or the sciences).
- D Charges or deposits for uniforms or equipment related to varsity and intramural sports, or to fine arts programs.
- E Charges to participate in an extra-curricular activity.
- F Graduation fees
- G School records fees.
- H Driver’s education fees assessed pursuant to Section 27-23 of The School Code.

“School fees” do not include:

- A Library fines and other charges made for the loss, misuse, or destruction of school property (e.g., musical instruments).
- B Charges for the purchase of class rings, yearbooks, pictures, diploma covers or similar items. Charges for optional travel undertaken by a school club or group of students outside of school hours (e.g., a trip to Spain by the Spanish Club or a senior class trip).
- C Charges for admission to school dances, athletic events, or other social events.
- D Optional community service programs for which fees are charged (e.g., preschool, before and after school child care, recreation programs).

Waiver of Fees

Students whose parents are unable to afford the school fees may request a fee waiver. Applications for fee waivers may be submitted from parents/guardians by completing an application form available online on the District’s website at www.epcusd401.org and click on Student Registration.

GRADING POLICY

The following numerical scale is used in order to achieve a uniform grading policy:

A= 90-100 B= 80-89 C=70-79 D=60-69 F= 0-59

LT= Late Transfer I=Incomplete SE=Showing Effort (Working toward standards)

A temporary grade of Incomplete may be given if required assignments are not turned in for a particular subject during the quarter due to documented illness or other extreme circumstances beyond the student’s control. Arrangements will then need to be worked out with teachers, and work must be completed within a 2-week period of time in order to receive a passing grade for that course.

Students are expected to receive passing grades in all classes. Elm offers students support through:

- Academic Advisory classes held for one half hour Monday through Friday
- Morning Support Classes
- Assistance given in the classroom
- Computer Club (Homework Club) after school from 3:10-4:00

GRADUATION/PROMOTION POLICY

In order to maintain a standard of excellence, minimal expectations of our students must be required while we strive for maximum achievement. The staff at Elm has established academic standards for our students in order to pass from one grade to another. Per Board of Education approval, our standards are described below:

One Semester F Grade: When a student receives an F semester grade in math or language arts:

- The parent will be notified by letter at the end of the first semester.
- It is also highly recommended that the child attend Middle School Summer School to make up for that semester F grade.

Two Semester F Grades: When a student receives the second semester F grade in math or language arts:

- The student will be required to attend Middle School Summer School. If the student does not successfully complete summer school, he/she will be retained.
- The student will not participate in the graduation ceremony.

Three or Four Semester F Grades: When semester F grades are earned in areas in addition to math or language arts:

- The student will be required to attend Middle School Summer School with promotion offered if successfully completed. If the child does not attend or does not successfully complete the program, the child will be retained.
- The parents will be notified by letter at the end of the first semester.
- The student will not participate in the graduation ceremony.

Five or more Semester F Grades

All of the supports listed above have been offered. The child will be retained.

In all cases of Middle School Summer School, the parents will pay the fee for school and there are no fee waivers accepted.

HALL PASSES

All students must have an assignment notebook. The assignment notebook will be used as a pass to move through the building other than at the designated times. If a teacher requests to see a student, they will also sign the assignment notebook. No student will be allowed to leave class without the assignment notebook. If a student is late to a class due to a teacher detaining them, the student must make sure to secure a pass from that teacher.

HOMEWORK/MAKE-UP WORK

Students are expected to complete and turn in all assignments on time. In order to keep up with homework, it is suggested that students and parents set up regular hours at home for students to complete the work, and turn it in faithfully as it is due. It is also the student's responsibility to go to teachers and get assignments that may be missed due to an absence from school. If a student is too ill to email teachers on their own, we recommend the student get healthy before worrying about completing makeup work. For each day spent at home due to an *excused absence*, one day is given to make up and to turn in work. For example, if out three days, student has three days to make up the work. Parents can pick up their child's books from their locker between 7:30 AM and 4:00 PM.

HOMEWORK ONLINE

Student homework assignments are available online after 4:00 PM on a daily basis.

HONOR ROLL

Elm Middle School has an honor roll that recognizes two categories: The Principal's List (all A's) and the Honor Roll (only A's and B's).

INSTRUCTION - CONTROVERSIAL

Throughout our courses of instruction, issues may be presented that are considered controversial. Any concerns that you may have can be handled by contacting the teacher.

LIBRARY MEDIA CENTER

The Library Media Center is open during the school year from 7:45 AM to 3:05 PM, Monday through Friday. All students have a library card on file at the circulation desk. The LMC has a wide variety of materials to meet the academic and recreational needs of the middle school student. Fiction and non-fiction books may be

checked out for two weeks. Reference books, older magazines and other materials may be checked out for overnight use. These materials must be returned before the first period class of the next day. Fines are imposed for each overdue book.

LOCKERS / BOOK BAGS

Students are assigned a hall locker for the purpose of storing coats and books while in school. The student's advisory teacher will assign this locker. Book bags are to be left in the student's locker at all times. Students must bring their own combination-type, not keyed locks to be placed on the student's locker. Lockers must be locked at all times when not in use. The safety and security of the locker and its contents are the sole responsibility of the student. It is important that students do NOT share locker combinations or leave their locker open and unattended. Students who do not have their lockers locked with an approved lock will be subject to consequences.

LOST MATERIAL POLICY

A student will be charged, according to the following schedule, for lost materials:

	Paperback	Hardcover
Young Adult fiction	\$10.00	\$20.00
Young Adult nonfiction	\$20.00	\$30.00
Magazine	\$3.00	
Reference	Actual replacement cost of item	

LUNCHROOM

Students are expected to report promptly to the lunchroom during the lunch period. Tardiness will result in the same disciplinary action as with classroom tardiness. While in the lunchroom, students are responsible for helping maintain an orderly and clean atmosphere for eating. All eating, including candy and other snacks must be done in the lunchroom or in a classroom under the supervision of a teacher only, during the lunch period.

MARKERS

Students are not to bring permanent markers of any kind to school. Teachers will supply markers when necessary.

PHOTOGRAPHS/VIDEOTAPING OF STUDENTS

In providing information about our district to our community, we occasionally like to photograph or videotape students. In order to do this; we would like your permission. (See parent/student sign off sheet at the beginning of this handbook.) These photographs and videos will be used to highlight our schools or share stories by developing brochures, sending information to local papers / cable stations or for use on the main school's website.

REPORT CARD / POWERSCHOOL

Report cards are issued to students every nine weeks and are mailed home on specific dates (4 times) during the school year. See school calendar for these dates. All students and parents have logins to PowerSchool. Both students and parents are encouraged to check grades and assignments on PowerSchool regularly. Printed Progress Reports can be made available if a parent does not have access to technology to check grades.

SCHOOL DAY

The school day begins at 7:45 am (9:05 am on Wednesdays for late start) and ends at 3:05 pm. Students may enter the building at 7:45 am (8:55 am on Wednesdays), and must exit by 3:15 pm, unless supervised by a member of the school staff. Upon arrival at school, students should enter the designated door and proceed to their hall locker. A tardy bell will ring at 7:55 am (9:05 am on Wednesdays). For the remainder of the day, the bells will ring at the beginning and end of each period.

SCHOOL PROPERTY

Elm Middle School belongs to the students, so students should take pride in caring for school property, and in keeping the halls and grounds clean and neat. Anyone who willfully destroys school property through vandalism, arson, or creates a hazard to the safety of other students, or steals will be subject to suspension, referred to the proper law enforcement agencies, and will be expected to pay for the repair or replacement of damaged property. Lockers are not places of absolute privacy. The advisory teacher and the administration

will have a copy of the combination; key locks will not be allowed. Book bags/back packs are not allowed in the classroom for safety reasons. Students may purchase a school padlock at the beginning of the school year, or, if they wish, furnish their own non-tempered steel combination lock from home. Students are not to share their lock combination with anyone, even close friends.

SEIZURE OF PROPERTY

If a search produces evidence that the student has violated or is violating the law or the District's policies or rules, such evidence may be seized and impounded by school authorities, and disciplinary action may be taken. When appropriate, such evidence may be transferred to law enforcement authorities.

SPECIAL EDUCATION SERVICES

Special education shall be provided for students who are physically, mentally, emotionally, or perceptually handicapped to a degree which makes it impractical or impossible for them to benefit from or to participate in the normal classroom programs, consistent with the provisions of P. L. 94-142.

Whenever possible, resource services shall be provided to the student so that he/she will be able to participate in as much of the regular school program as possible. If such an arrangement does not sufficiently meet the student's needs, he/she may be placed in a special education class on a full-time basis.

Elmwood Park District is a member of the Leyden Area Cooperative for Special Education in Cook County, a cooperative association of school districts which offers special class placement and other services for various types of handicaps. Operating under the provisions of the Illinois School Code (Section 14) and the regulations of the Illinois Office of Education, program costs are shared by the local districts and the state. The programs, including transportation, are provided without charge to the parent(s)/guardian(s) and parental consent is a requirement for placement.

Reference District Policies For Student Handbooks Elmwood Park Community Unit School District #401

These policies are available online at www.epcusd401.org or in the principal's office.

STUDENT ID's

Students will be issued an Elm ID. Students are required to carry their ID cards every day. Replacements can be ordered during advisory in the main office. There is a fee of \$5 for replacement ID cards. The reasons for this requirement are as follows:

- The card is needed to ride the bus.
- The card is required for entrance to all athletic activities, dances or other social events.
- The card is used as an identification of students in cases of emergencies.
- The card is used to leave the cafeteria during lunch.

TARDIES TO SCHOOL/TARDY CONTRACT

It is important for students to be on time for school. A tardy bell will ring at 7:55 am (9:05 am on Wednesdays). Should a student arrive after the 7:55 am (9:05 am on Wednesday) bell, they must report directly to the office for a pass before going to their first class. Tardiness to school multiple times results in the following consequences:

2 – 4 times tardy	Student Conferences, Phone Calls Home, Lunch Detentions, After-school Detentions
Future Tardies	Tardy Contract

A tardy contract outlines expectations and sets goals for students who have had trouble arriving to school on time.

VALUABLES IN SCHOOL

Students are urged not to bring valuables and/or large sums of money to school. Musical instruments may be stored in the music area by special arrangements with the band director. If a student loses any books, items of clothing or other belongings, he/she can check with the School Office, or Lost & Found (in the front of the school). **ELM IS NOT RESPONSIBLE FOR THE LOSS OF POSSESSIONS.**

VISION SCREENINGS

Vision screenings are conducted annually for all children enrolled in the school district. A vision screening is not a substitute for a complete eye and vision evaluation by an eye doctor. Your child is not required to undergo this vision screening if an optometrist or ophthalmologist has completed and signed a report form indicating that an examination has been administered within the previous 12 months. Please let us know immediately if you do not wish for the school district to conduct a vision screening for your child.

VISITORS

All visitors to Elm Middle School during hours when students are present must present a driver's license or state ID, sign in and out at the office, and obtain a visitor's badge. To provide a safe environment for our students, all adult visitors will be screened by an electronic database. School age visitors are not permitted during school hours.

BEHAVIOR TERMINOLOGY:

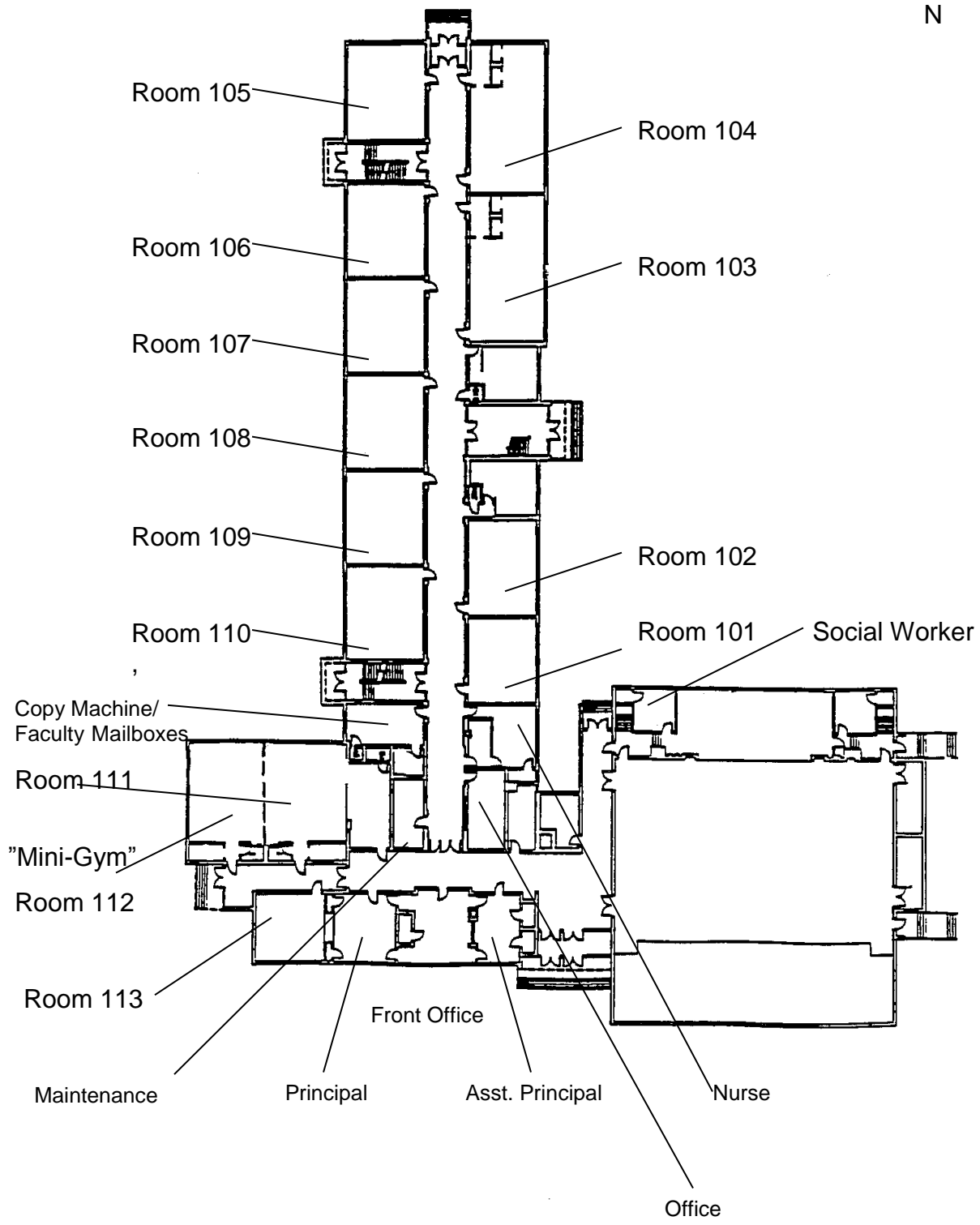
OSS means "Out of School Suspension." Suspended students are not allowed on school grounds during the term of the suspension. They may be placed on probationary status and may lose all end of marking period privileges and the right to participate in or attend extra-curricular activities. Parents must meet/speak with the principal or a designee before the student may be readmitted to school. Students on suspension will be given the opportunity to make up work missed.

ISS means "In-school suspension." District 401 houses its in-school suspension room at Elmwood Park High School. If a student is assigned an In-school suspension, he or she will be required to serve at Elmwood Park High School.

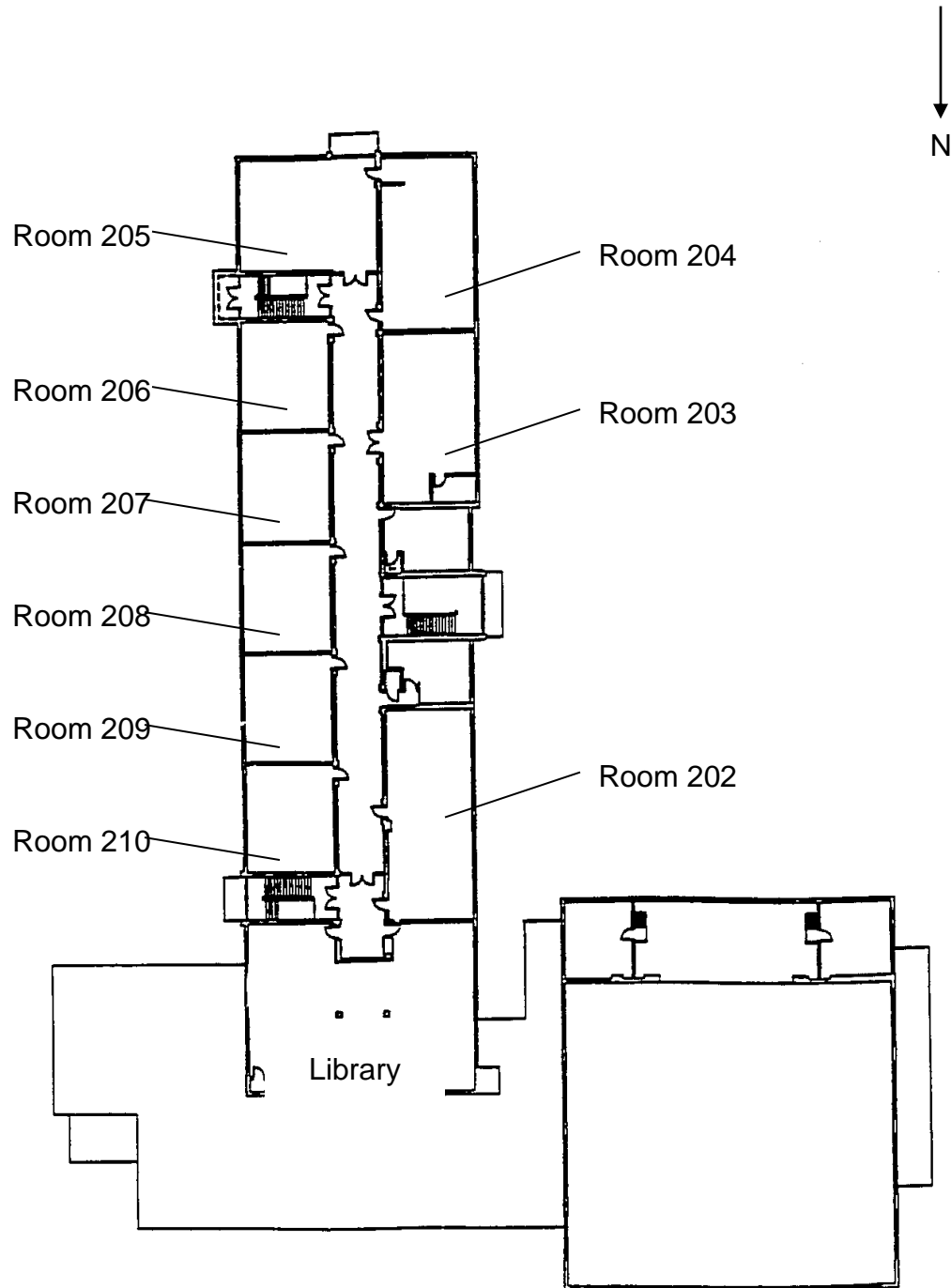
Elm Middle School Expectations

	RESPECT SELF	RESPECT OTHERS	RESPECT PROPERTY	BE THERE; BE READY
Classrooms	<ul style="list-style-type: none"> - Do your best work - Be on task - Participate in class 	<ul style="list-style-type: none"> - Use respectful words - Keep hands / feet / objects to self - Let others do their best 	<ul style="list-style-type: none"> - Pick up after self - Respect all school property inside and outside 	<ul style="list-style-type: none"> - Have supplies ready - Homework complete on time - Listen and follow directions
Hallway	<ul style="list-style-type: none"> - Walk carefully - Talk in normal conversational tone 	<ul style="list-style-type: none"> - Be aware of others around you - Keep hands/feet to self 	<ul style="list-style-type: none"> - Keep hands off of locks and lockers 	<ul style="list-style-type: none"> - Get to class on time - Use passing period wisely
Restrooms	<ul style="list-style-type: none"> - Wash hands thoroughly with soap 	<ul style="list-style-type: none"> - Use normal, conversational voices - Give others privacy - Wait patiently 	<ul style="list-style-type: none"> - Use towels appropriately - Keep water in sink - Throw towels in garbage 	<ul style="list-style-type: none"> - Return to class immediately after use
Cafeteria	<ul style="list-style-type: none"> - Sit with both feet under table - Consider healthy lunch choices 	<ul style="list-style-type: none"> - Use normal, conversational voices - Keep hands / feet / objects to self - Make good choices 	<ul style="list-style-type: none"> - Throw away all garbage in cans - Pick up garbage off floors 	<ul style="list-style-type: none"> - Walk at all times - Wait patiently in line
Outside	<ul style="list-style-type: none"> - Be aware of others around you - WALK 	<ul style="list-style-type: none"> - Keep hands / feet / objects to self - Respect our neighbors 	<ul style="list-style-type: none"> - Walk on sidewalks only - Pick up your trash 	<ul style="list-style-type: none"> - Be on time to school
Assembly	<ul style="list-style-type: none"> - Sit in designated area assigned for your advisory 	<ul style="list-style-type: none"> - Use appropriate applause - Keep hands / feet / objects to self 	<ul style="list-style-type: none"> - Keep feet on floor 	<ul style="list-style-type: none"> - Be silent when speaker is talking - Keep eyes on speaker - Listen
Bus	<ul style="list-style-type: none"> - WALK to and from bus - Sit on seat, facing forward 	<ul style="list-style-type: none"> - Use normal, conversational voices - Use respectful words - Keep hands / feet / objects to self - Respect our neighbors & their property 	<ul style="list-style-type: none"> - Keep materials in the book bag - Pick up garbage - Refrain from eating or drinking 	<ul style="list-style-type: none"> - Have ID ready - Wait for bus on sidewalk, not curb - Enter and exit quickly and safely
Dismissal	<ul style="list-style-type: none"> - WALK 	<ul style="list-style-type: none"> - Use normal, conversational voices - Keep hands / feet / objects to self 	<ul style="list-style-type: none"> - Check space around you for garbage 	<ul style="list-style-type: none"> - Take all necessary materials home

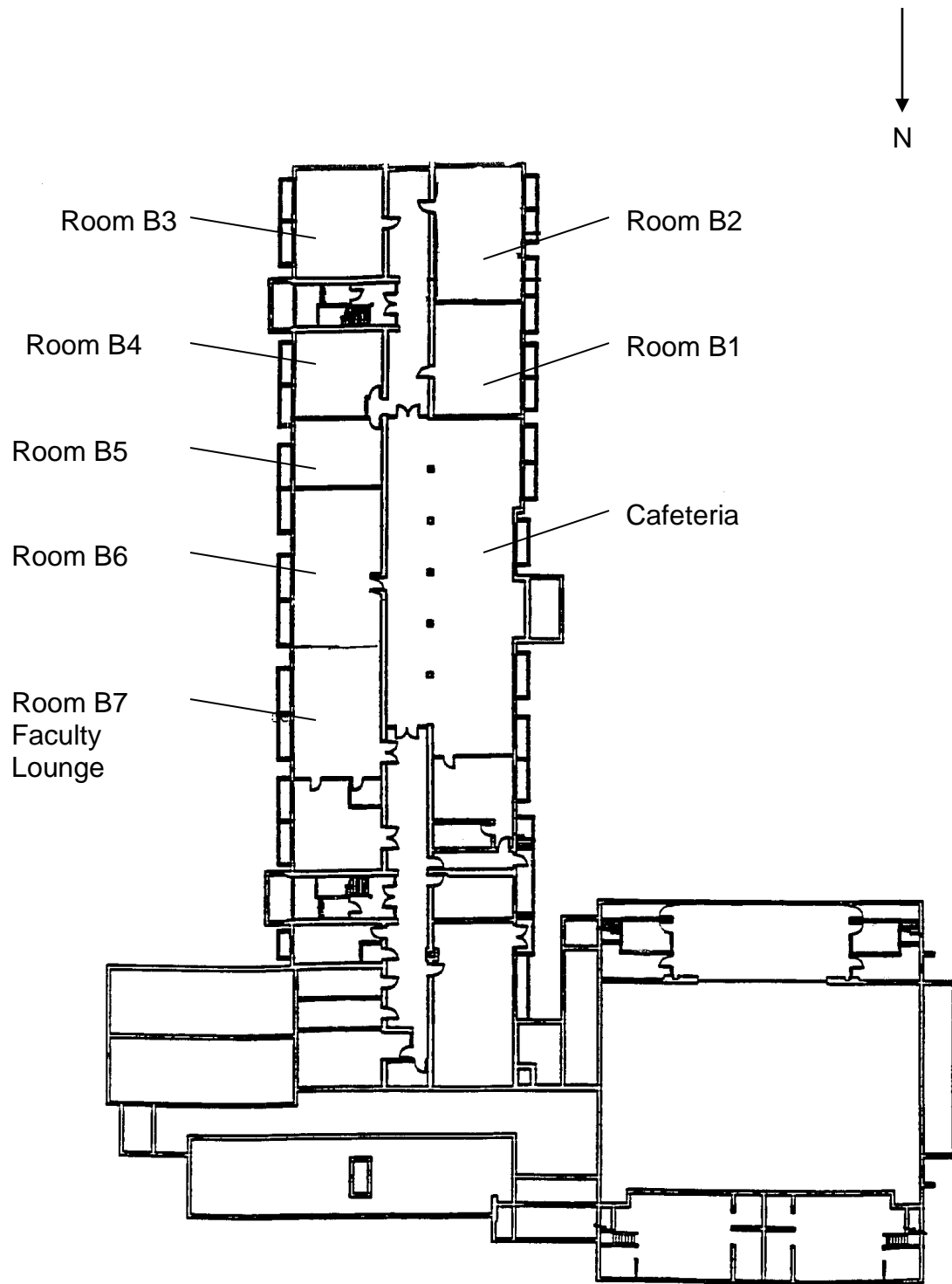
First Floor



Second Floor



Basement





The National Junior Honor Society (NJHS) is governed by the National Association of Secondary School Principals. The NJHS is open to all seventh and eighth graders who have met five criteria: scholarship, leadership, service, character, and citizenship. The basic scholarship requirement is a cumulative average of B or better. Academically eligible candidates will be evaluated on the basis of leadership, service, character, and citizenship. They must demonstrate appropriate conduct and they can have no suspensions from school (in-house or out of school suspensions). Selection is made by a majority vote of a Faculty Council consisting of five faculty members. Each year the National Junior Honor Society completes one or more community service projects in which all the members of the society are involved. A project could be oriented toward improving student leadership, educating them as citizens, working with, and learning about senior citizens, providing some learning about other cultures, or performing some school service

National Junior Honor Society Selection Process for Membership

Students' academic records are reviewed to determine those students who are scholastically eligible for membership, i.e., a cumulative average of B or better in all previous semesters of school. Students must have been enrolled in Elm Middle School for a full semester before they become eligible for consideration.

Students who are eligible scholastically are notified and informed that for further consideration for selection to the chapter they may complete the Student Activity Information Form (SAIF), outlining their accomplishments in the areas of Service Leadership, Character and Citizenship. The Form must be completed by the due date. No exceptions.

All faculty members are invited to make comments on candidates in the areas of leadership, scholarship, service, character, and citizenship. However, actual selections are made by the five member Faculty Council.

The Faculty Council reviews the SAIF and faculty comments for each candidate. Candidates receiving a majority vote will be inducted into the chapter.



CHARACTER
SCHOLARSHIP
LEADERSHIP
SERVICE
CITIZENSHIP

Membership in the National Junior Honor Society has been earned by the effective demonstration of the five qualities held in high esteem by the society.

**ELMWOOD PARK COMMUNITY UNIT SCHOOL DISTRICT #401
JULY 2016 – JUNE 2017
OFFICIAL PUBLIC SCHOOL CALENDAR**

Elmwood Park Community Unit School District #401

2016-2017 School Calendar

July 2016						
Su	M	Tu	W	Th	F	Sa
					1	2
3	4	5	6	7	8	9
10	11	12	13	14	15	16
17	18	19	20	21	22	23
24	25	26	27	28	29	30
31						

August 2016						
Su	M	Tu	W	Th	F	Sa
	1	2	3	4	5	6
7	8	9	10	11	12	13
14	15	16	17	18	19	20
21	22	23	24	25	26	27
28	29	30	31			

September 2016						
Su	M	Tu	W	Th	F	Sa
				1	2	3
4	5	6	7	8	9	10
11	12	13	14	15	16	17
18	19	20	21	22	23	24
25	26	27	28	29	30	

October 2016						
Su	M	Tu	W	Th	F	Sa
						1
2	3	4	5	6	7	8
9	10	11	12	13	14	15
16	17	18	19	20	21	22
23	24	25	26	27	28	29
30	31					

November 2016						
Su	M	Tu	W	Th	F	Sa
		1	2	3	4	5
6	7	8	9	10	11	12
13	14	15	16	17	18	19
20	21	22	23	24	25	26
27	28	29	30			

December 2016						
Su	M	Tu	W	Th	F	Sa
				1	2	3
4	5	6	7	8	9	10
11	12	13	14	15	16	17
18	19	20	21	22	23	24
25	26	27	28	29	30	31

January 2017						
Su	M	Tu	W	Th	F	Sa
1	2	3	4	5	6	7
8	9	10	11	12	13	14
15	16	17	18	19	20	21
22	23	24	25	26	27	28
29	30	31				

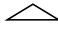
February 2017						
Su	M	Tu	W	Th	F	Sa
			1	2	3	4
5	6	7	8	9	10	11
12	13	14	15	16	17	18
19	20	21	22	23	24	25
26	27	28				


March 2017						
Su	M	Tu	W	Th	F	Sa
			1	2	3	4
5	6	7	8	9	10	11
12	13	14	15	16	17	18
19	20	21	22	23	24	25
26	27	28	29	30	31	

April 2017						
Su	M	Tu	W	Th	F	Sa
						1
2	3	4	5	6	7	8
9	10	11	12	13	14	15
16	17	18	19	20	21	22
23	24	25	26	27	28	29
30						

May 2017						
Su	M	Tu	W	Th	F	Sa
	1	2	3	4	5	6
7	8	9	10	11	12	13
14	15	16	17	18	19	20
21	22	23	24	25	26	27
28	29	30	31			

June 2017						
Su	M	Tu	W	Th	F	Sa
				1	2	3
4	5	6	7	8	9	10
11	12	13	14	15	16	17
18	19	20	21	22	23	24
25	26	27	28	29	30	

 Parent Teacher Conferences

 First and Last Day of School

July 4 - 4th of July Holiday
Aug 11 - Instate Day
Aug 12 - Teacher Work Day
Aug 15 - First Day of School
Sept 5 - Labor Day - No School
Sept 15 - High School Conf. Oct 6 & 13 EMS Conference
Oct 10 - Columbus Day - No School
Oct 14 - Q1 43
Nov 9 & 10 - Elementary Conferenc Nov 10 High School Conf
Nov 11 - Veterans Day - No School
Nov 23 - No School / Conference Exchange
Nov 24-25 - Thanksgiving Break
Dec 22 - Q2 45
Dec 23 - Jan 6 - Winter Break

Jan 16 - Martin Luther King Holiday - No School
Feb 15 & 16 - Elem./Middle School Cor Feb 16 HS Conf.
Feb 17 - No School / Conference Exchange
Feb 20 - Presidents' Day - No School
Mar 14 - Q3 44
Mar 27-31 - No School - Spring Break
April 14 - No School
April 17 - Alternative Pulaski Day Observed - No School
Apr 27 - High School Conferences
May 5 - Instate Day
May 25 - Last Day of School Q4 44
May 26 - Teacher Work Day or Emergency Day (if needed)*
May 29 - Memorial Day - No School
May 30-June 2 - Emergency Days*

***May 26 is a scheduled Teacher Work Day and emergency day. If the emergency day is used on the 26th, the Teacher Work Day will be held on Tuesday, May 30 or the day after the last emergency is used (if needed).**

Our official school/calendar has five (5) emergency days built in at the end of the year. There may be a need to dismiss school due to inclement weather and will require the use of the makeup days indicated in May/June. **Please do not make any travel/vacation plans during those dates.** Please keep in mind that only 5% of the staff may be absent before or after published holidays per the contract. Emergency dates are May 26, 30, 31 and June 1-2. May 26 is also a scheduled Teacher Work Day. See the underlined Teacher Work Day information above for additional details.

Board of Education Approval: January 21, 2016

Staff Development: Late start schedule applies every Wednesday when school is in session.

