



MEDIA CONTACT:

Nicole Noonan
Marketing & Community Coordinator
(920) 788-7900
nnoonan@kimberly.k12.wi.us

425 S. WASHINGTON STREET
COMBINED LOCKS WI 54113

(920) 788-7900
FAX (920) 788-7919

www.kimberly.k12.wi.us

**NEWS RELEASE
FOR IMMEDIATE RELEASE**

Kimberly High School Students Honored with 20 Scholastic Art Awards

Kimberly, Wis. – January 17, 2018 – Setting a new record for [Kimberly High School \(KHS\)](#), 20 students have received Scholastic Art Awards. The [Alliance for Young Artists & Writers](#) identifies teenagers with exceptional artistic and literary talent and brings their remarkable work to a national audience through the Scholastic Art & Writing Awards. The [Kimberly Area School District](#) asks its students to pursue their potential in all of their endeavors, including the arts. These awards are a testament to the efforts of students and the staff who have supported their artistic development throughout their school career.

Kimberly High School art teachers Heather Schaefer, Pete Greeninger and Miki Wise educate students to develop their knowledge of multiple artistic techniques and to also use art as a way to communicate. “The Kimberly High School Art Department is extremely proud of all of our art students who put in countless hours and creativity into their projects,” said Pete Greeninger, art teacher at Kimberly High School. “Our department is very thankful to work with great art students, parents and administration who support the arts.”

The following students were recognized for their exceptional pieces of artwork:

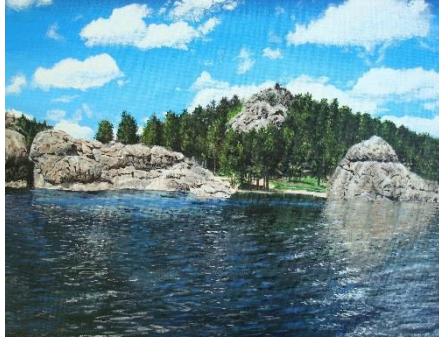
-more-

Teejay Bouressa, Ceramics
"A Tribute to My Dad"



Gold Key

Courtney Rammer, Painting
"Beauty in the Black Hills"



Gold Key

Hallie Dix, Painting
"My Sweet Sister"



Silver Key

Breanna DuFrane, Painting
"Dress Up In My Little World"



Silver Key

Emma Gingras, Painting
"Grandma's Teacup"



Silver Key

Aubrey Steidl, Drawing
"Furball"



Silver Key

Madison Vandenberg, Ceramics
"Black Crackle"



Silver Key

Hallie Dix, Drawing
"Akeal and Akoya"



Honorable Mention

Hallie Dix, Drawing
"Pax"



Honorable Mention

Kali Frye, Drawing
"My Happy Face"



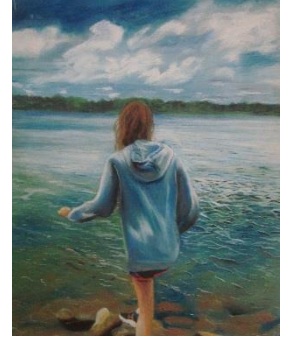
Honorable Mention

Emma Gingras, Painting
"Naptime"



Honorable Mention

Emma Handschke, Painting
"Drop My Worries"



Honorable Mention

Faith Huey, Drawing
"Birthday Flowers"



Honorable Mention

Danielle Johnson, Ceramics
"Designed Plate"



Honorable Mention

Lauren Johnson, Ceramics
"Never Ending"



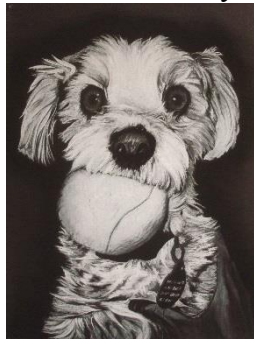
Honorable Mention

Katelynn McClintock, Ceramics
"The Marauder Print"



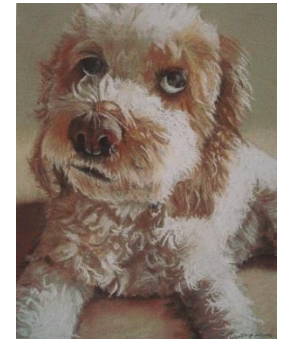
Honorable Mention

Derek Poggemann, Drawing
"Anxious to Play"



Honorable Mention

Courtney Rammer, Drawing
"Bella"



Honorable Mention

Megan Reinke, Ceramics
"Black Crackle"



Honorable Mention

Alysha Stuber, Painting
"Helpless"



Honorable Mention

Artwork from Wisconsin's Gold Key and Silver Key winners will be displayed during the [Milwaukee Art Museum's 2018 Scholastic Art Awards: Wisconsin Exhibit](#) beginning February 5 to March 16, 2018. "It is an incredible and inspiring show," said Heather Schaefer, art teacher at Kimberly High School. "It is an honor to be invited and have received an award of any level." Additionally, the Gold Key winners' artwork is submitted to the National Scholastic Art Award competition. The national award winners are announced later in the spring.

About the Kimberly Area School District

The Kimberly Area School District is a progressive public school district committed to providing the best possible education available to students. Its responsibility is to help lead the way in developing well-rounded students and future citizens. The District wants every student to be given the opportunity to reach their potential through academics, the arts and co-curricular activities. It encompasses approximately 17 square miles and serves over 5,100 students in one 4K center, four elementary schools (5K-4), two intermediate schools (5-6), one middle school (7-8) and one high school (9-12). To learn more about the Kimberly Area School District, call (920)788-7900 or visit www.kimberly.k12.wi.us.