



MEDIA CONTACT:
Nicole Noonan
Marketing & Community Coordinator
(920) 788-7900
nnoonan@kimberly.k12.wi.us

425 S. WASHINGTON STREET
COMBINED LOCKS WI 54113

(920) 788-7900
FAX (920) 788-7919

www.kimberly.k12.wi.us

NEWS RELEASE

FOR IMMEDIATE RELEASE

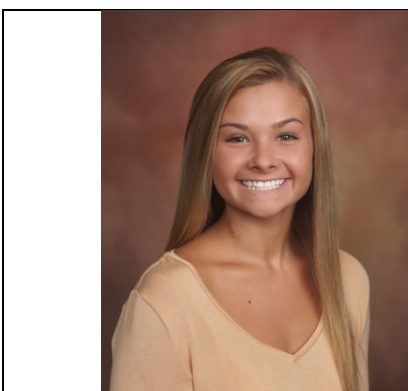
Nine Kimberly Students Selected for Fox Valley Medical Mentoring Program

Kimberly, Wis. – April 10, 2019 – Nine [Kimberly High School \(KHS\)](#) students who are pursuing their career interests in the health science career cluster were selected for the [Fox Valley Medical Mentoring](#) summer program. This elite job shadowing program selects students based on academic rigor, teacher recommendations and student essays.

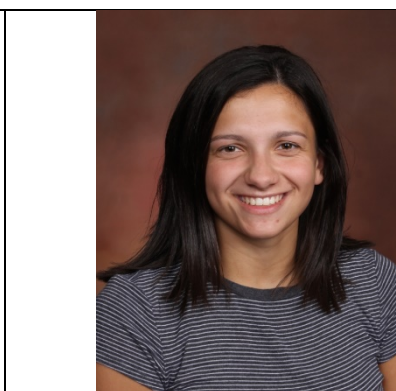
“I am grateful and excited to have the opportunity to shadow a health care professional through medical mentoring,” said Courtney Rammer, a senior at KHS who was selected for the medical mentoring program.

“I’m looking forward to the experience since it will help me discover different areas in health care I both do and don’t enjoy, which will enable me to solidify my career plans.”

The following KHS students have been selected to be a part of the Fox Valley Medical Mentoring program:



Tiegan Dawley



Emily Destiche



Natalie Dresang

-more-



Austyn Krueger



Kalli Mau



Collin Miller



Victoria Nelson



Courtney Rammer



Kate Slesar

“These students have shown a great deal of interest in the health care field and have taken numerous courses in high school to prepare them for the next steps in their future,” said Kayla Sutton, science teacher at KHS. “The Medical Mentoring program is an ideal opportunity for these students to connect with health care professionals and truly learn from a hands-on job shadowing experience.”

These students have a strong desire to obtain a degree in the health care field. They will spend their summer experiencing these professions first hand and they will have the opportunity to shadow a variety of medical professionals. “I also hope to learn more about what a normal day would look like for a certain career in the health field by observing my mentor in their day-to-day work environment,” said Rammer. “It is great how they are willing to share their knowledge and experiences with high school students.”

The Fox Valley Medical Mentoring program is a great example of collaboration between area organizations and schools to provide opportunities for students to reach their potential and prepare for life after graduation.

“I have a strong passion for service, so I see myself in a career where I am able to help others every day,” said Rammer. “I hope to use compassion and patience to help provide meaningful and trustworthy care towards others.”

About the Kimberly Area School District

The Kimberly Area School District is a progressive public school district committed to providing the best possible education available to students. Its responsibility is to help lead the way in developing well-rounded students and future citizens. The District wants every student to be given the opportunity to reach their potential through academics, the arts and co-curricular activities. It encompasses approximately 17 square miles and serves over 5,100 students in one 4K center, four elementary schools (5K-4), two intermediate schools (5-6), one middle school (7-8) and one high school (9-12). To learn more about the Kimberly Area School District, call (920)788-7900 or visit www.kimberly.k12.wi.us.