

# WENATCHEE SCHOOL DISTRICT

# Back-To-School Guide 2021

## What's Inside

Reopening FAQ

Free meals

Immunizations

School Schedule

Riding the Bus

And more

[WENATCHEESCHOOLS.ORG](http://WENATCHEESCHOOLS.ORG)







## A Message from the **Superintendent**



*Paul Gordon  
Superintendent*

I am so excited to welcome our students, staff, parents, and our community to the 2021-2022 school year. Fall is always a time filled with excitement and anticipation, and it is even more true this year. After many transitions, challenges, and unique opportunities that we were all presented with due to COVID, it will be great to embrace our students as they return safely to our schools, classrooms, hallways, and playgrounds for full-time daily instruction beginning August 25.

As we move forward with full-time, in-person instruction our focus will be on learning acceleration and continuing to support the academic and social and emotional well-being of our students. In the months ahead, we will roll out a new strategic plan that will guide our efforts to improve student academic outcomes and help us create a learning environment where everyone is seen, valued, and thrives.

In the pages of this back-to-school guide, you'll find information to assist you and your student(s) in making a return to school. While COVID is moving into the rearview mirror, it is reasonable to expect that moving forward the Washington State Department of Health (DOH) and the Office of the Superintendent of Public Instruction will continue to update their guidance and will require schools have measures in place to reduce risks to students and staff from COVID-19.

You can expect to hear from us as these updates are made and changes take effect. I encourage you to check the District's website [wenatcheeschools.org](http://wenatcheeschools.org) for the latest information.

Our staff is eager to see you and welcome you and your student(s) back on the first day of school August 25.

-Paul

# SCHOOL REOPENING FAQ

This frequently asked questions (FAQ) document details what students, their families, educators, and school staff can expect for school in the 2021–22 school year. The trajectory of disease prevalence in our state and nation may require changes in our state’s response efforts and periodic updates to school mandates and guidance. For the most current K-12 information please check our website [wenatcheeschools.org](http://wenatcheeschools.org) and [doh.wa.gov](http://doh.wa.gov).

**Who decides what COVID mitigations schools must have in place?** On July 28, Governor Jay Inslee announced that due to an increase in COVID transmission rates and spread of the new, more contagious Delta variant in our state, that all K-12 schools are mandated by law to continue mask-wearing among students and adults inside schools regardless of vaccination status. The masking mandate is not under the jurisdiction of local school boards or superintendents. The Governor’s order also requires K-12 schools to continue to following guidance from the Department of Health (DOH). Guidance is posted on the DOH website [doh.wa.gov](http://doh.wa.gov)

**What will school look like this fall?** OSPI, DOH, and the Governor’s Office have mandated that all Washington students will have the opportunity to attend school in-person full-time (five days per week) in the 2021–22 school year. All Wenatchee Schools will be open to serve PreK-12 students with full-time daily instruction.

**Will all school buildings reopen fully?** Yes. All Wenatchee schools will provide each student with the opportunity to learn in-person full-time (five days per week). The district office and other school facilities will also be fully open to serve the public.

**Will there still be an online option for learning?** Yes. The Wenatchee Internet Academy (WIA), a full-time online school, will continue to be available during the 2021-22 school year for families that wish for their K-12 students to learn remotely. Enrollment information is available at [wenatcheeschools.org/WIA](http://wenatcheeschools.org/WIA) or by calling (509) 888-5222.

**Will there still be health and safety measures in place?** Yes. The following mandatory measures will still be in place in the 2021–22 school year: face coverings for all students, staff, and visitors (regardless of vaccination status); improved ventilation; regular cleaning and

disinfecting; and processes for responding to and reporting cases of COVID-19. Physical distancing is still recommended by DOH at this time – please see the next question for more information.

**What physical distancing requirements will be in place?** DOH recommends 3 feet of physical distancing in classrooms and 6 feet elsewhere to the greatest extent possible. Flexible language in the guidance related to physical distancing (i.e., “to the greatest extent possible” and “to the degree possible and reasonable”) ensures schools are able to provide full-time in-person instruction to every student and family who wants it. If a school needs to distance at less than 6 feet in common areas and less than 3 feet in classrooms to accommodate all students and staff, it is allowable within the guidance.

**Will masks be required?** All school personnel, volunteers, visitors, and students must wear cloth face coverings (regardless of vaccination status), or an acceptable alternative (e.g., surgical mask or clear face shield with a drape), at school when indoors and when riding school transportation. Staff who are verified to be fully vaccinated may be indoors without masks when students are not present or expected to be present.

**Will schools still be required to screen all students, staff, and visitors for symptoms?** No. For the 2021–22 school year, DOH removed the requirement that schools need to screen students, staff, and visitors at entry to school buildings. However, schools will continue monitoring students, staff, and visitors for symptoms, and follow the protocols for responding to someone who shows symptoms of COVID-19.

**Will the COVID-19 vaccine be required for students in fall 2021?** No. The State Board of Health, which has the sole authority to set immunization requirements for students, is not requiring the COVID-19 vaccine for children in school settings. However, we encourage vaccination among all who are eligible.

**Can the District decide to mandate the vaccine for students, even if the state doesn’t?** No. State law (RCW 28A.210.140) provides full authority to the State Board of Health to establish the procedural and substantive requirements for immunizations for students.



# 2021-2022

## School Start & End Times

Tuesday - Friday	School Start	School End
Elementary	7:45 AM	2:30 PM
Middle Schools	8:50 AM	3:35 PM
Wenatchee HS	8:40 AM	3:25 PM
WestSide HS	8:35 AM	3:20 PM

Late Start Monday	School Start	School End
Elementary	9:15 AM	2:30 PM
Middle Schools	10:20 AM	3:35 PM
Wenatchee HS	10:10 AM	3:25 PM
WestSide HS	10:05 AM	3:20 PM

### Wenatchee Valley Tech

AM Session 8:40 - 11:25 PM Session 12:35 - 3:05

### Castlerock Early Learning Center

AM Session 7:55 - 10:25 PM Session 11:45 - 2:15

### Wenatchee Valley Tech

AM Session 8:40 - 11:25 PM Session 12:35 - 3:05

### Castlerock Early Learning Center

No AM Classes PM Session 11:45 - 2:15

## COVID-19 Testing and Vaccination

While COVID-19 testing programs and vaccinations are not a requirement for providing in-person learning, these measures can help reduce the risk of COVID-19 transmission in the school environment and the broader community.

Vaccines are not yet authorized for use in children under 12 years old. For these reasons, we must continue to implement a layered strategy. Wenatchee School District encourages vaccination among all eligible students, staff, and volunteers. All prevention strategies provide some level of protection, and layered strategies implemented at the same time provide the greatest level of protection.

### Have more questions?

Call the Washington State Department of Health's COVID-19 Information hotline: 1-800-525-0127 Monday – 6 a.m. to 10 p.m., Tuesday – Sunday and observed state holidays, 6 a.m. to 6 p.m. For interpretative services, press # when they answer and say your language. For questions about your own health, COVID-19 testing, or testing results, please contact a health care provider. To request this document in another format, call 1-800-525-0127. Deaf or hard of hearing customers, please call 711 (Washington Relay) or email [civil.rights@doh.wa.gov](mailto:civil.rights@doh.wa.gov).





# SCHOOL IMMUNIZATION REQUIREMENTS AND HEALTH INFO



Immunization Requirements for the 2021-2022 school year are summarized below. For questions or detailed information please check with your medical provider. Washington State requires students to be fully immunized before they can attend school. Vaccination records must be medically verified. State law does not allow for parents to report without medical verification. Vaccine exemptions REQUIRE a physician's signature. The following vaccinations are REQUIRED for school attendance:



## **HEPATITIS B:**

Grades K-12: 3 doses

## **DTaP/DT/Td/Tdap:**

Grade K-12: Five doses (Four doses if the last dose given on or after the 4th birthday). Grades 6-12: One dose of Tdap given after age 10 years.

## **POLIO (IPV OR OPV):**

Grades K-12: Four doses, with the final dose given after the 4th birthday.

## **MMR**

### **(MEASLES/MUMPS/RUBELLA):**

Grades K-12: Two doses given on or after the 1st birthday. Washington State has recently eliminated Personal Exemptions for MMR vaccine. Only Medical or Religious Exemptions will be accepted.

## **VARICELLA:**

Grades K-12: Two doses given on or after the 1st birthday or health care provider verification of disease.

## **MENINGOCOCCAL VACCINE:**

Meningococcal disease is a rare but serious infection of the brain (meningitis) and blood caused by bacteria. Adolescents and young adults are most likely to get the disease, especially those who live in a group

setting. Talk with your child's doctor about whether your child should have the vaccine. This vaccination is recommended but not required for schools.

For more information visit the state Department of Health website at [www.doh.wa.gov/cfh/Immunize/meningococcal.htm](http://www.doh.wa.gov/cfh/Immunize/meningococcal.htm).

## **HUMAN PAPILLOMAVIRUS VIRUS (HPV):**

HPV is a common virus that has many forms, all of which may be spread through genital contact. Gardasil is a vaccine that protects against four types of HPV which cause 70 percent of cervical cancers and 90 percent of genital warts. The CDC recommends routine vaccination with GARDASIL for preteen girls and boys ages 11 to 12, and for teens and young adults ages 13 through 26 who have not already been vaccinated. This vaccination is recommended but not required for schools.

For more information visit [www.doh.wa.gov/cfh/immunize/documents/hpvpvaccinefactsheet.pdf](http://www.doh.wa.gov/cfh/immunize/documents/hpvpvaccinefactsheet.pdf).

**Questions?** Please contact your healthcare provider or contact your school nurse.

## SCHOOL NURSES

Julie Robinson, MN, RN  
(LEAD),  
Foothills, Wenatchee  
Valley Tech, Valley  
Academy of Learning,  
and Castle Rock Early  
Childhood Learning  
Center  
(509) 670-8569

Jennefer Botello, MSN,  
RN,  
Wenatchee High School  
(509) 670-3538

Jennifer Douglas, MN, RN,  
Lewis and Clark and  
John Newbery  
(509) 670.7807

Katherine Dreyer, BSN,  
RN, Pioneer and  
WestSide High School  
(509) 387.0523

Rochelle Jessup, MSN,  
RN, Orchard and  
Mission View  
(509) 860.6964

Taylor Mason, MSN,  
RN, Sunnyslope and  
Washington  
(509) 679.4207

Melanie Wallace, MSN,  
RN, NCSN,  
Lincoln, and Columbia  
(509) 630-8141

<https://www.wenatcheeschools.org/nurses-student-health>

# SCHOOL DIRECTORY



## **Columbia Elementary**

600 Alaska St.  
Wenatchee WA 98801  
Phone: (509) 662-7256  
Principal Si Stuber  
Assistant Principal Lydia Cluckey-Oaks  
Counselor Elizabeth Detamore  
Office Manager Maria Contreras  
Family Advocate Nancy Sanchez Arroyo  
[wenatcheeschools.org/col](http://wenatcheeschools.org/col)



## **Castle Rock Early Childhood Learning Center**

112 South Elliott  
Wenatchee, WA 98801  
Phone: (509) 663-7117  
Director Trisha Craig  
Assistant Director Annika Bibby  
Office Manager Maria Lima  
Morning sessions: 7:55-10:40  
Afternoon sessions: 11:45-2:15  
[wenatcheeschools.org/cp](http://wenatcheeschools.org/cp)



## **John Newbery Elementary**

850 N. Western Ave.  
Wenatchee, WA 98801  
Phone: (509) 664-8930  
Principal Socorro Yanez  
Assistant Principal Amy Dilley  
Counselor Ernie Garza  
Office Manager Kathy Fulkerson  
Family Advocate Yuridia Lopez-Acevedo  
[wenatcheeschools.org/nb](http://wenatcheeschools.org/nb)



## **Lewis and Clark Elementary**

1130 Princeton Avenue  
Wenatchee, WA 98801  
Phone: (509) 663-5351  
Principal Alfonso López  
Assistant Principal Mario Avila  
Counselor Adela Valaas  
Office Manager Adriana Campos  
Family Advocate Belia Sánchez  
[wenatcheeschools.org/lc](http://wenatcheeschools.org/lc)



## **Lincoln Elementary**

1224 Methow Street  
Wenatchee, WA 98801  
Phone: (509) 663-5710  
Principal Tim Sheppard  
Assistant Principal Jesica Bryant  
Counselor Aaron MacKenzie  
Office Manager Francine Alvarado  
Family Advocate: TBD  
[wenatcheeschools.org/lin](http://wenatcheeschools.org/lin)



## **Mission View Elementary**

60 Terminal Avenue  
Wenatchee, WA 98801  
Phone: (509) 663-5851  
Principal Jeff Jaeger  
Assistant Principal Donna Limon  
Counselor Justin Neilson  
Office Manager Alejandra Chimal  
Family Advocate: Veronica Mendoza  
[wenatcheeschools.org/mv](http://wenatcheeschools.org/mv)



## **Sunnyslope Elementary**

3109 School Street  
Wenatchee, WA 98801  
Phone: (509) 662-8803  
Principal Dave Perkins  
Counselor Gioconda Jackson  
Office Manager Deanne Erickson  
[wenatcheeschools.org/ss](http://wenatcheeschools.org/ss)



## **Washington Elementary**

1401 Washington St.  
Wenatchee, WA 98801  
Phone: (509) 662-5504  
Principal Janell Royster  
Assistant Principal Ryan Weaver  
Counselor Cody Wright  
Office Manager Deb Lewin  
Family Advocate Yuridia Lopez  
[wenatcheeschools.org/wa](http://wenatcheeschools.org/wa)





### **Valley Academy of Learning**

1911 N. Wenatchee Ave.  
Wenatchee, WA 98801  
Phone: (509) 662-6417  
Program Administrator Greg Lovercamp  
Secretary Katie Eddy  
[wenatcheeschools.org/val](http://wenatcheeschools.org/val)



### **Foothills Middle School**

1410 Maple St.  
Wenatchee, WA 98801  
Phone: (509) 664-8961  
Principal Mark Goveia  
Assistant Principal Chad Morgan  
Counselors Hailey Griffith & Kevin Loomis  
Office Manager Sheli Franklin  
Family Advocate Saray Cuevas Renteria  
[wenatcheeschools.org/fms](http://wenatcheeschools.org/fms)



### **Orchard Middle School**

1024 Orchard Avenue  
Wenatchee, WA 98801  
Phone: (509) 662-7745  
Principal Taunya Brown  
Assistant Principal Josh Eidson  
Counselors Ronda Brender  
and Kelli Ottley  
Office Manager Julee Accardo  
Family Advocate Brenda Webley  
[wenatcheeschools.org/oms](http://wenatcheeschools.org/oms)



### **Pioneer Middle School**

1620 Russell St.  
Wenatchee, WA 98801  
Phone: (509) 663-7171  
Principal Robert Cline  
Assistant Principal Shelly Jelsing  
Counselors Tim Trainor and Kelli Ottley  
Office Manager Lisa Johnson  
Family Advocate Lina Maldonado  
[wenatcheeschools.org/pio](http://wenatcheeschools.org/pio)



### **Wenatchee High School**

1101 Millerdale Avenue  
Wenatchee, WA 98801  
Phone: (509) 663-8117  
Principal Eric Anderson  
Assistant Principal Ricardo Iñiguez  
Assistant Principal Donna Moser  
Assistant Principal Molly Butler  
Counselors Mary Howie, Stephanie Stuber,  
Jennifer Anaya, Tonya Luinstra, Will White  
Executive Assistant Kendra Macon  
Family Advocate Patty Muniz  
[wenatcheeschools.org/whs](http://wenatcheeschools.org/whs)



### **WestSide High School**

1510 Ninth Street  
Wenatchee, WA 98801  
Phone: (509) 663-7947  
Principal Jennifer Devereaux  
Counselors Jan Bullock  
and Heather Rosa  
Office Manager Gretchen Mann  
Family Advocate Jonathan Godina  
[wenatcheeschools.org/wshs](http://wenatcheeschools.org/wshs)



### **Wenatchee Internet Academy**

1510 Ninth Street  
Wenatchee, WA 98801  
Phone: (509) 888-5222  
Administrator Jennifer Devereaux  
Office Manager Samanta Reynoso  
[wenatcheeschools.org/wia](http://wenatcheeschools.org/wia)



### **Wenatchee Valley Technical Skills Center**

327 East Penny Road  
Wenatchee, WA 98801  
Phone: (509) 662-8827  
Director Peter Jelsing  
Office Manager Pam Bowen  
[wenatcheeschools.org/wvtsc](http://wenatcheeschools.org/wvtsc)



# Meals at School

## WSD Nutrition Service

1201 Millerdale Ave. Wenatchee, WA 98801  
(509) 662-9345

[wenatcheeschools.org/food-services](http://wenatcheeschools.org/food-services)



The U.S. Department of Agriculture (USDA) has announced that ALL students will be eligible to continue receiving FREE meals regardless of their income through the 2021-22 school year.

Hot breakfast and lunch are available daily at every school free for all students. Our goal is to provide nutritious meals to each student in order to support their growth and development and promote an optimal classroom experience. Research has shown that hungry children often have difficulty focusing and performing to their best ability during the school day. In order to support our community and all the families in our district in meeting the shared goal to feed every kid, free meals will be offered to all students through the 2021-22 school year. We look forward to serving you this year.

### Application for Free or Reduced Meals

Even though the USDA has extended free meals for students, families are encouraged to complete an application for free or reduced meals. Families that complete

the application may be eligible for reduced student ASB, event, and athletic fees through the fee reduction program.

### How to apply:

New applications can be printed out online on our website, or picked up from the Wenatchee School District Nutrition Services Department as early as August 1. Completed applications can be hand-delivered or mailed to Nutrition Services. Applications will also be available at your student's school office once the office re-opens for the school year, and a copy will be included in your child's Back-To-School packet. Families may apply or reapply for services at any time during the school year if the needs of the family change.



# STUDENT FEE REDUCTION PROGRAM

[wenatcheeschools.org/fee-reduction-program](http://wenatcheeschools.org/fee-reduction-program)

The Wenatchee School District is pleased to offer a new fee reduction program for extracurricular activities, including school-based athletic programs and other optional noncredit school clubs/events. The purpose of this new program is to encourage participation and eliminate barriers that may prevent students from involvement in these valuable enrichment activities, especially for students who are low-income.

## Who qualifies for the fee reduction program?

Any Wenatchee School District student whose family qualifies for free and reduced meals. All members of the household listed on the Household Free and Reduced Meals Application will qualify for reduced admission prices to their students' school's extracurricular events.

## What fees are waived/reduced?

ASB Cards, Athletic Participation, Club participation, dance tickets, camp costs, event entrance fees, etc.

A complete list of eligible fees is available on the student fee reduction program website

[wenatcheeschools.org/fee-reduction-program](http://wenatcheeschools.org/fee-reduction-program)

## How do I apply?

To qualify for the fee reduction program parents and/or guardians must complete a household Application for Free & Reduced Meals and complete a Consent to Share Information form. Applications and consent forms are available at [wenatcheeschools.org/fee-reduction-program](http://wenatcheeschools.org/fee-reduction-program)

## My student attends a school that offers free meals for all students, do I still have to apply?

Yes, to qualify for the fee reduction program parents and guardians must submit a WSD Household Application for Free and Reduced Meals and Consent to share information form.

More information and application forms are available on the Student Fee Reduction Program website [wenatcheeschools.org/fee-reduction-program](http://wenatcheeschools.org/fee-reduction-program)

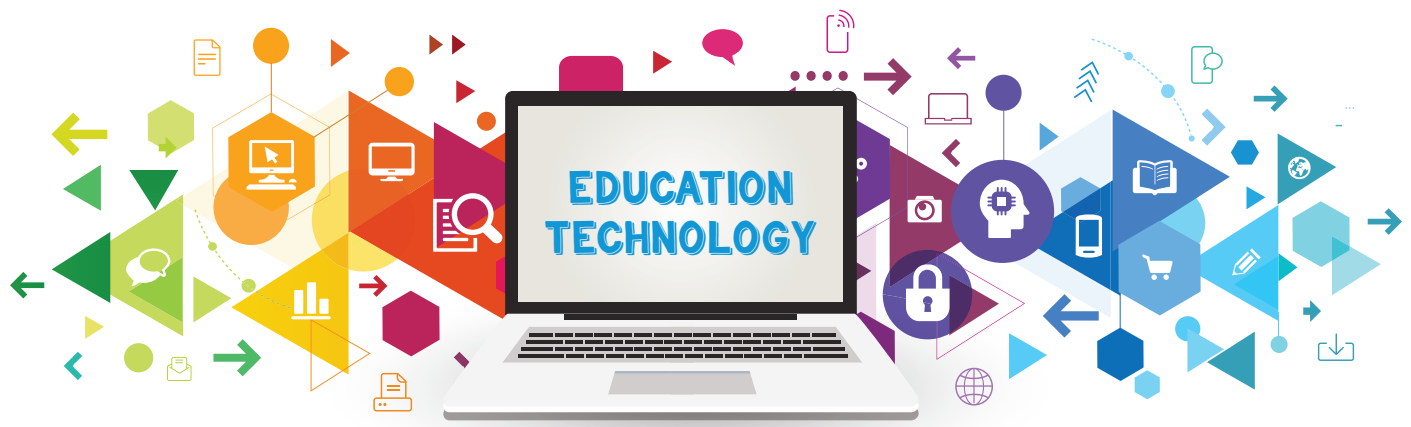


# STUDENT ID CARDS

All Wenatchee School District students are issued student ID cards. The cards will allow for access to many student services including, ASB, library check out, off-campus privileges for high school students, and bus rider tracking. Cards will be issued by your child's school. Replacement cards will cost \$5 per card.







## School Issued Chromebooks and iPads

WSD will be moving to a 1:1 model where every student will be assigned either a District iPad or Chromebook for improved future-ready learning strategies and for some grade levels the continuation of learning at home. All students will be assigned devices PreK-12th grade and will be expected to use their checked-out device. Students not taking devices home will have a secure charging location for the device at school. Secondary students (grades 6-12) will take their device home daily.

## Damage and repair

To assist with repair and damage we will be offering device assurance to each student for \$25 annually. This assurance program would cover accidental damage or theft of school-issued devices. The assurance program will not cover lost or damaged chargers. Should the District need to shut down for any reason in the future, students will be able to quickly transition to online instruction.

## Free and Low-cost Internet Resources

Low-cost and free Wi-Fi and broadband services are available from local internet service providers (ISP) through the Emergency Broadband Benefits program. Contact a local provider and ask for the EBB for qualification information and details.

<https://bit.ly/wsdebb>

## Learning Management System

To better support students and families, the District will continue to use the Canvas Learning Management System (LMS). Canvas will continue to be a "one-stop-shop" that will provide students, families, and educators a place to see assigned work, schedules, and information. Canvas will support seamless transitions from traditional face-to-face learning to online learning or a combination of both, strengthen communication, and enhance equitable access to students as they learn the priority standards. Canvas has tools for parents to track their student's progress and support learning at home. To ensure access to Canvas, parents need to make sure their contact information is up-to-date with their students' school. Parents can update their contact information at <https://bit.ly/WSDInfoUpdate>

## Tech Support

Tech support staff from Tech Connect WA are here to assist students and families with issues ranging from an internet connection, applications, software, logins, and devices. Tech support is available for WSD families and Wenatchee area community members.

Phone: 800-216-1132

[connect-washington.org](https://connect-washington.org)

[contact@techconnectwa.com](mailto:contact@techconnectwa.com)

Support Hours: 9-5 PST



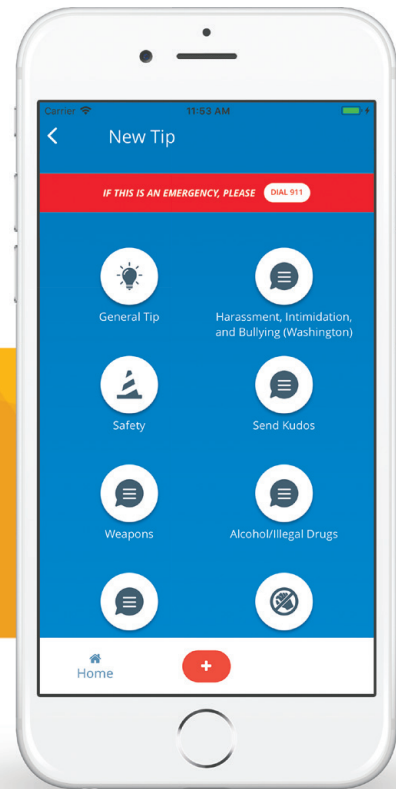


Wenatchee School District

# Report It

SafeSchools Alert is our district's tip reporting service. If you have information about a threat to our safety, do your part and report it! And remember, you can remain anonymous.

## SUBMIT USING OUR APP



## FOR EMERGENCIES, PLEASE CALL 911

### EASY WAYS TO REPORT



Visit the website  
<http://1046.alert1.us>



Email your Tip to  
[1046@alert1.us](mailto:1046@alert1.us)



Call to report your tip  
**844.336.1964**



Text your Tip to  
**844.336.1964**

### REPORT ON:

- BULLYING
- INTIMIDATION
- HARASSMENT
- WEAPONS
- DRUGS
- OTHER



## Our District Code is: 1046

All tips submitted are taken seriously and will be acted upon. Please be responsible with your submissions.





# Homeless Assistance

School Meal and Other Assistance for  
Families/Students Facing Housing Problems

[wenatcheeschools.org/homeless-assistance](http://wenatcheeschools.org/homeless-assistance)

Carmela Solorio  
Homeless Liaison  
Phone (509) 663-8161  
[solorio.c@wenatcheeschools.org](mailto:solorio.c@wenatcheeschools.org)

Cristina Torres  
Homeless Liaison  
Phone (509) 663-8161  
[torres.cristina@wenatcheeschools.org](mailto:torres.cristina@wenatcheeschools.org)

If your family is experiencing housing problems, signing up for free school meals is fast and easy, and is one way to make sure your child can grow and learn.

Wenatchee School District McKinney-Vento Program is in place to address and support nutrition and other needs of students enrolled in Pre-K through 12th grade, who may find themselves in an unstable, temporary or transitional housing situation, due to economic problems, natural disasters, or some other reason that may have forced them to: live temporarily with another family; live in a motel, campground or car; live in an emergency, domestic violence or transitional shelter; or move around in search of affordable, sustainable housing. Or children and youth on their own: living temporarily with another family; living in a motel, campground or car; living in an emergency, transitional or runaway shelter; for some reason.

Our program works closely with local shelters and housing providers, community agencies offering support services, the City of Wenatchee, Chelan County, and Washington state's Office of Superintendent of Public Instruction (OSPI). We work to ensure educational stability for students in short-term/temporary and transitional/homeless housing situations so they feel supported and encouraged while they secure permanent housing.

If you feel your family or if you know of a youth, who may qualify for our Program's assistance and services, or would like more information, please contact our McKinney-Vento Liaison directly, or ask any school office staff member for help in reaching our Liaison at the district office.





**Transportation Department**  
**1201 Millerdale Ave**  
**Wenatchee, WA 98801**  
**Phone: 662-6168**  
**[wenatcheeschools.org/transportation](http://wenatcheeschools.org/transportation)**



WSD Transportation looks forward to welcoming your student on our yellow school buses for another school year. Our goal is to provide safe and efficient service to our students and families. Please review the important information below and call our office at (509) 662-6168 if you have any questions or concerns.

General education bus routes will be posted on the transportation website by Monday, August 16. To find your student's pick-up and drop-off location, please visit [wenatcheeschools.org/transportation](http://wenatcheeschools.org/transportation) or call transportation at (509) 662-6168.

#### **Special Education Routes:**

Elementary and preschool students will be transported to and from school together in the morning and afternoon. As much as possible, secondary students will ride with their appropriate grade level.

#### **General Education Routes:**

- In the morning, we will pick up elementary students first, drop them off at school and then buses will begin a separate run to pick up secondary students (middle school & high school students). The same bus may or may not serve the same area for secondary students. In the afternoon, we will deliver elementary students home first and then return to pick up secondary students at the end of their school day.
- Students will have the same driver and have the same route number in both the morning and afternoon.
- Students should look at the route number on the black placard on the side of the bus near the door to ensure that they are riding the correct route bus. Although the route number and bus number will be the same most of the time, it is important to double-check. It may be necessary for a driver to be in a spare bus from time to time (which would have a different

bus number), but the driver will change the number on the placard to reflect the correct route number.

- Bus Transfer for Secondary Students: For efficiency and community traffic flow middle schools will be used as high school transfer locations. All secondary students will be transported to middle schools at which time high school students will board designated transfer buses to be transported to their appropriate campus. This will alleviate congestion caused by multiple buses in the high school load zone.

#### **Morning:**

- Secondary students will be transported to their enrollment boundary middle schools. High School students will then transfer to a designated bus to their appropriate campus (Wenatchee High School, Westside High School, and Wenatchee Valley Technical Skill Center).

#### **Morning Exceptions:**

- High school students who live within the one-mile walk boundary of Foothills Middle School and Orchard Middle School will walk to their enrollment boundary middle school to board the designated bus to their



appropriate campus (Wenatchee High School, Westside High School, Wenatchee Valley Technical Skills Center). Departure time and route from the middle schools will be posted with other route information on the website.

#### Afternoon:

- High school students (Wenatchee High School, Westside High School, and Wenatchee Valley Technical Skills Center) will ride designated buses to their enrollment boundary middle school. At the middle school they will transfer to their neighborhood bus or walk home if they live within the middle school one-mile walk boundary.

Please note High school students living within the one-mile walk boundary of Wenatchee High School walk to school. High school students living within the one-mile walk

boundary of their enrollment area middle school will walk to that middle school and catch a designated bus to their appropriate high school campus (Wenatchee High School, Westside High School, and Wenatchee Valley Technical Skills Center). Middle school students living within the one-mile walk boundary will continue to walk to school.

#### ID Card Bus Pass:

As a safety enhancement measure the district is continuing to issue student ID cards for bus riders. Each student will use their ID card to scan on and off the school bus. Accurate ridership data will enhance safety and communication when it is needed most. Students should scan on and off the bus each time they embark or disembark from the bus. If your student was not issued or needs a replacement card, please have them speak with their school office. There will be a \$5.00 charge for replacement cards.

## Riding the Bus Details

**Arrive at bus stops:** Please have students to the bus stop 5 minutes prior to the scheduled pick-up time. Routes and times are subject to change as busloads and service areas may need adjusting once school has started to balance busloads.

**Basic Education Students:** Students must use the assigned school bus stop closest to their residence.

**Kindergartners:** All kindergarten students must be met at their bus stop by a parent or guardian or they will be returned to school. If your student(s) is capable of being released from the bus alone, a Transportation Release Form will be required to be turned in to the Transportation Office. Please ask your driver for a form or you may call the transportation office at (509) 662-6168.

**Special Education Students and Preschoolers:** Students must pre-register with the Special Education Department prior to riding the buses. Any transportation changes throughout the year must go through the Special Education Department. Contact Special Ed. at (509) 663-7117

All special education students must be met by a parent or guardian for students to be released from the bus. If your student(s) is capable of being released from the bus alone, a Transportation Release Form will be required to be turned in to the Transportation Office. Please ask your driver for a form or you may call the transportation office at (509) 662-6168.

**Heavy, Sharp, Bulky and/or Hazardous Items:** WAC 392-145-021(3) prohibits certain items on school buses, including all forms of animal life (except service animals), firearms, weapons, breakable containers (glass), flammables, and all other articles which could adversely affect the safety of the school bus and passengers. For safety, other prohibited items include but are not limited to: balloons, perfumes/co-

lognes, aerosol cans, and longboards. Skateboards, scooters, and athletic balls MUST be completely secured and encased in a backpack. Backpacks and musical instruments (in a case) should be small carry-on types that can sit on the student's lap or between their legs on the floor.

**Food and Drinks on the Bus:** Food, drink, candy, or gum are not allowed to be consumed on the bus at any time. All food and drink items must be kept in a lunch box or backpack while on the bus.

**Headphones/Earbuds/AirPods:** For student safety, students should not wear these items while at bus stops, entering, or exiting the bus, as drivers need to communicate with students, especially in emergency situations.

**Lost Items:** Drivers will hold on to items until the following day. Valuables such as cell phones, wallets, laptops, and instruments will be taken into the transportation office overnight. If items are not claimed the next day, drivers will turn into the appropriate school's lost and found.

**Bus Passes:** Students shall ride their regularly assigned bus at all times unless permission has been granted by school authorities (WAC 392-145-060). If students wish to be dropped off at a stop other than their regularly assigned stop, they must obtain a bus pass from the office of the school they attend, prior to boarding a bus. Remind your student to arrange for the pass with the school office BEFORE the end of the day. Buses will not wait for students to acquire a bus pass after the dismissal bell.



# CHILDCARE

## Before and After School Student Care Programs

Childcare services are offered before and after school for students in grades K-5 at elementary schools in the Wenatchee School District through our partnership with the Wenatchee Valley YMCA. COVID-19 health and safety measures including but not limited to wearing masks, maintaining social distancing, and observing proper hygiene will be required for all childcare programs.

### Wenatchee YMCA Student Care

[wenymca.org/studentcareatwenatchee](http://wenymca.org/studentcareatwenatchee)

The YMCA Student Care Program engages youth in STEAM (Science, Technology, Engineering, Art, and Mathematics) activities to ensure a brighter future. Our participants also benefit from homework help, a healthy snack, and 30 minutes of physical activity every day. The Y's Student Care Program is available for students in Kindergarten through 5th grade, follows the Wenatchee School District calendar, and offers before, after, and out of school care during the summer and on vacation days.



### YMCA Student Care Locations

Students may attend one of the following school locations for care. District transportation is provided. Please contact the YMCA for details on which location your student would be eligible to attend.

- Columbia Elementary
- Lincoln Elementary
- Washington Elementary
- Sunnyslope Elementary

### Wenatchee Valley YMCA

Information on registration, fees and hours of operation is available from the YMCA  
<http://www.wenymca.org/student-care>

### YMCA Student Care Program Contact:

Brogan Foster  
Director of Child Care

[childcareadmin@wenymca.org](mailto:childcareadmin@wenymca.org)  
509-662-2109  
509-668-7873







## Introducing Telehealth at School



# LIMIT TIME AWAY FROM THE CLASSROOM

New this next school year, and through a partnership with CVCH, our school district will now have access to a School-Based Health Coordinator, Beidit Escalera!

Beidit, alongside nurse practitioner, Andrea Hoey, will collaborate with school nurses and health staff to ensure that every child gets connected to the healthcare services they need. Medical appointments will be available in-person or through telehealth. Our goal is to address the student's healthcare needs in order to improve absenteeism and increase academic success!



### Contact Beidit Escalera

Escalera.beidit@wenatcheeschools.org  
(509) 630-5031

## Services

- Evaluation and treatment of common injuries and illnesses
- Mental health screening, care, and referral
- Help with managing ongoing health conditions
- Annual well-child check-ups
- Camp or sports physicals
- Vaccinations
- Age-appropriate care
- Dental referrals
- Health insurance enrollment assistance
- Crisis support

# IDENTIFICATION ACTIVITY FOR HIGHLY CAPABLE PROGRAMS (HICAP)

WENATCHEESCHOOLS.ORG/HICAP

**All students in the Wenatchee School District are automatically considered for identification for HiCap services through multi-year, multi-measure data reviews.**

The WSD is guided by principles (National Association for Gifted Children) that acknowledge

- giftedness is dynamic and is constantly developing
- and giftedness is found among students from a variety of backgrounds.

Each spring, all 2nd-grade students are universally screened for measures of cognitive development and reasoning ability. This fall all 4th-grade students will also be universally screened due to the pandemic affecting scheduling during 2020-2021.

**Anticipated grade level HiCap identification activity is expected to occur throughout the 2021-2022 year:**

- 3rd - 5th Grade - October and November
- 6th - 8th Grade - November and December (tentative)
- Kindergarten - 1st Grade - February
- 9th - 12th Grade - March and April (tentative)
- 2nd Grade - May and June

**Parents of students determined as likely to benefit from HiCap services will be notified in writing following the identification activity.**

Opportunities for students with advanced learning needs are available K-12 in a variety of academic domains. We emphasize curriculum that is appropriately different in pace and complexity. Programming offers regular opportunities for students to work with other students of similar (advanced) academic abilities.

**Referral is not necessary for consideration** but if you have additional information you would like considered in the identification process, you may refer a student and include this information on a referral for consideration for Highly Capable services.  
Deadline: September 17, 2021.

For more information contact Kathy Moody, District HiCap Coordinator at (509) 663-8161, moody.k@wenatcheeschools.org, or the HiCap specialist at your child's elementary school.

- Leslie Kiick — Columbia and John Newbery
- Eva Martinez — Lewis & Clark and Washington
- Kathy Moody — District HiCap Coordinator / Mission View
- Katie Stefanides — Abraham Lincoln and Sunnyslope

## Advanced High School Courses

There are multiple advanced courses available for high school students in the Wenatchee School District and they often provide opportunities for students to earn college credit while in high school. These options include Advanced Placement, College in High School, Career and Technical Education (CTE) and Running Start at WVC. Some of these opportunities have timelines associated with them.

## Advanced Placement Timeline

- October 29, 2021 - AP Exam Decision Deadline and Payment of Exam Fees\*
- March 4, 2022 AP - Late Decision Deadline and Payment of Exam Fees with Late Fees
- May 2 - 13, 2022 - Anticipated AP Exams Dates (schedule will be posted on the WHS and WSHS websites)

\*Students eligible for free or reduced lunch are able to take AP exams at no cost. You must complete an application for F/R lunch through Nutrition Services to receive this Washington State exam subsidy.

## College in the High School Timeline

- September - Fall registration deadline
- February/March - Spring registration deadline

\*There is a WSAC grant that will cover full CiHS tuition for eligible students.

## Career and Technical Education (CTE) Dual Credit Timeline

You must complete registration to receive college credits; there is no charge.





### **Running Start at WVC Timeline**

- September 13, 2021 - Deadline to apply for 2021 Fall Semester
- March/April 2022 - Apply for 2022 Fall quarter

Speak with your high school counselor for more information or contact:

### **Advanced Placement (AP):**

Kathy Moody, District HiCap Coordinator (509) 663.8161  
moody.k@wenatcheeschools.org

### **College in the High School:**

- Ricardo Iñiguez, Assistant Principal (509) 663.8117  
iniguez.r@wenatcheeschools.org

### **Career and Technical Education (CTE):**

- Jacob Bucholz, CTE Director (509) 663.8117  
bucholz.j@wenatcheeschools.org
- Cindy Murie, CTE Pathways Coordinator (509) 663.8117  
murie.c@wenatcheeschools.org

### **Running Start at WVC:**

- Running Start Staff (509) 682.6920  
runningstart@wvc.edu



# SPECIAL PROGRAMS



## MIGRANT BILINGUAL PARENT ADVISORY COMMITTEE (PAC)

### PAC Officers:

Elizabeth Cabrera, President  
Maria Vergara, Vice President  
Daniel Alpire, Secretary

### Parent Advisory Committee Meetings

October 6, 5-7 pm  
January 26, 5-7 pm  
April 27, 5-7 pm  
End of the Year Celebration, June 1, 5-7 pm

All events are in  
Wenatchee High School Commons,  
1101 Millerdale Ave. Wenatchee

The Special Programs Department (Title 1A, LAP, Title 1C Migrant, Bilingual) focuses on 'eligible' students and families. By providing a range of supplemental services and programs, our goal is to help these students achieve high academic levels and be prepared for college or careers.

### The Migrant Education Program

In partnership with schools, communities and families, the Migrant Education Program supports the unique educational needs of migrant students by enhancing their opportunities for personal success and advocating for quality services that promote responsible and productive individuals.

- Services that support academic growth for eligible students who are failing or are most at risk.
- Parent Family Engagement Activities: Parents of students eligible for the program are encouraged to participate in district-hosted events and activities designed to support their child's learning.
- Professional development for teachers and paras of migrant students.

### Family Advocates

Family Advocates work to build stronger families through support, engagement, and communication. Family Advocates are located in all WSD schools and provide valuable outreach and encourage parent and student involvement with school/ community activities and team with counselors, teachers, administrators, and family advocates to foster home-school partnerships.

Family Advocates assist with the development and facilitation of building parent advisory groups and assist with the district-level Migrant-Bilingual Parent Advisory Committee (PAC) to establish effective school and home communication.

<https://www.wenatcheeschools.org/special-programs>  
(509) 662-9634

Jeremy Wheatley - [Wheatley.j@wenatcheeschools.org](mailto:Wheatley.j@wenatcheeschools.org)  
Director of State & Federal Programs

Nadya Bush - [bush.nadya@wenatcheeschools.org](mailto:bush.nadya@wenatcheeschools.org)  
Assistant Director of Special Programs



## Viva Spanish Radio! WSD Spanish Radio Shows

The Wenatchee School District hosts the Cafecito Educativo radio program on FM 103.3 La Nueva to better reach our Latinx/a community and share important District information with the Spanish-speaking community and our families.

## EN VIVO CON EL SR. LÓPEZ

LIVE WITH MR. LÓPEZ



TUESDAYS 7-7:30 AM  
MARTES 7-7:30 AM

LANUEVARADIO.COM



### Cafecito Educativo

An energizing dose of district news  
and updates from around WSD  
*Mondays at Noon*

### Vive con el señor Lopez

Your questions answered by Washington  
State's Elementary Principal of the Year Lewis &  
Clark's own Mr. Alfonso Lopez.  
*Tuesdays at 7:30 AM*

**KWLN-FM 103.3 La Nueva**  
<https://www.lanuevaradio.com>

## TITLE I, PART A – PARENT’S RIGHT TO KNOW

**The Every Student Succeeds Act (ESSA)** was signed into law on December 10, 2015, and reauthorizes the Elementary and Secondary Education Act of 1965 (ESEA). ESSA builds upon work the states and local school districts have implemented over the last few years. The reauthorized law prioritizes excellence and equity for our students and supports great educators.

**Title 1, Part A Programs** allow schools to offer services and interventions that support struggling learners. Title 1, Part A is one of many programs governed by ESSA. The Wenatchee School District funds schoolwide programs that offer services to students based on academic need. Schoolwide programs are offered at Orchard, Foothills, and Pioneer middle schools and at Columbia, Lincoln, Mission View, Lewis & Clark, and Newbery elementary schools as well as WestSide High School

### Teacher and Paraprofessional Qualifications

Parents of children attending Title 1 Part A schools have the right to request and receive information regarding the qualifications of the teachers and paraprofessionals who provide instruction to students.

### Notification of limited WA State Certification/Licensure Requirements

Parents must receive notification if their child has been assigned, or has been taught by a teacher who has limited state certification/

licensure for more than four consecutive weeks. Learn more online at [www.k12.wa.us/TitleIIA](http://www.k12.wa.us/TitleIIA)

### Information on State and Local Assessments

Information must be available on each assessment required by the state and district. At the beginning of each school year, parents may request information regarding any state or district policy regarding participation in any assessments mandated by Section 1111(b)(2) and the state and parental rights to opt out of such assessment.

### Report Card for Every Student

Schools that operate Title 1A programs will generate a report card that explains how well a student scored on state assessments in reading, English language arts, and mathematics.

### District Report Card

Annually, OSPI provides a report card for each school which includes student achievement information disaggregated by categories such as ethnicity and income level. The Wenatchee School District's report card is available online at: [http://reportcard.ospi.k12.wa.us/SchoolIndex\\_2018.aspx?schoolId=30&reportLevel=District](http://reportcard.ospi.k12.wa.us/SchoolIndex_2018.aspx?schoolId=30&reportLevel=District) by selecting the school level data tab and then choosing your school from the drop-down menu.



## FEDERAL RACE AND ETHNICITY INFORMATION NOTICE

Each year, school districts in Washington are required to report student data by ethnicity and race categories to the state's Office of Superintendent of Public Instruction (OSPI). Ethnicity and race categories used in our district are the same as are used in all Washington school districts. They are set by the federal government, the Washington State Legislature, and OSPI. OSPI is required to report the total number of students in various categories in each school to the federal government, but it does not report individual student data. These reports help our district and the state keep track of changes in student enrollment and various outcomes (such as graduation rates) to ensure that all students receive the educational programs and services to which they are entitled.

Recently, the federal government and OSPI changed the reporting categories for student ethnic and race data. As a result of the new reporting categories, we need to ask you to identify your child as either Hispanic/Latino or not Hispanic/Latino and by one or more racial groups.

If your family is Asian, you will now be able to list your child as either Chinese, Japanese, or belonging to one or more of the other Asian groups. If your family is Native American, you will be able to list your child's tribal affiliation. If one parent identifies with one race and the other parent with another, you will be able to check both races for your child.

All public schools in Washington will need to start using these new categories. Please complete the online through Skyward Family Access or on the District's website [wenatcheeschools.org](http://wenatcheeschools.org) or directly at [bit.ly/35Ov3qT](http://bit.ly/35Ov3qT)

For more information about the student data reporting categories for ethnicity and race, please contact the district office.

According to the Federal Family Education Rights and Privacy Act (FERPA) the Wenatchee School District may disclose some personally identifiable information about students ("student directory information"), without written consent. Information may be given to outside organizations, but the primary use of directory information is to allow the school district to include this information in certain school publications, including:

- The annual yearbook
- Honor roll or other recognition lists
- Printed programs for graduation, sports competitions or school plays
- School-related social media posts and video productions, print and online communication and media coverage of district/school events or activities.

Wenatchee School District defines "student directory information" as:

- Name, address, email address and phone number
- Date of birth
- Dates of enrollment and enrollment status
- Diplomas and awards
- Participation in activities and sports
- Height and weight (for athletes)
- Grade level and most recent school or program attended
- Photograph or video image

Wenatchee School District will release directory information upon request to Law Enforcement and Child Protective Services without the consent of parents when the law requires it.

If you do not want the school district to disclose directory information, including your student's photo or video image, without prior written consent, you must notify your school in writing by completing an opt-out form and returning it to your school's office. Paper forms are available at school offices or on the school district's website [wenatcheeschools.org](http://wenatcheeschools.org). This includes sharing directory information with media outlets and partner organizations. Parents must complete an opt-out form annually.

### STUDENT DIRECTORY INFORMATION REQUESTS BY OUTSIDE ORGANIZATIONS

If you ask the school district not to release student directory information, you will not receive some mailings that are routinely sent to students and their families from outside organizations, including notifications from government agencies and information about school pictures and yearbooks (which may prevent your child from being included in the yearbook).

The law permits the school district to disclose student directory information without parental consent to school officials with legitimate educational interests. A school official is a person employed by the school as an administrator, supervisor, instructor or support staff member (including health or medical staff and law enforcement unit personnel); a person serving on the school board; a person or company with whom the school has contracted to perform a special task (such as an attorney, auditor, medical consultant, or therapist); or a parent or student serving on an official committee, such as a disciplinary or grievance committee, or assisting another school official in performing his or her tasks. A school official has a legitimate educational interest if the official needs to review an education record in order to fulfill his or her professional responsibility.

### STUDENT DIRECTORY INFORMATION REQUESTS BY MILITARY RECRUITERS

Federal law requires the school district to provide military recruiters with student's name, address and phone number unless parents have informed the district not to do so.

If you do not want the school district to disclose directory information, or if you want your child's contact information withheld specifically from military recruiters, you must notify your school in writing by completing an opt-out form and returning it to your school's office. Forms are available online at [wenatcheeschools.org](http://wenatcheeschools.org) or at school offices.



<b>July - 2021</b>					<b>0</b>	<b>2021 - 2022</b>  <b>Student Calendar</b>		<b>January - 2022</b>					<b>19</b>	
M	T	W	T	F				M	T	W	T	F		
			1	2				3	4	5	6	7		
5	6	7	8	9				10	11	12	13	14		
12	13	14	15	16				17	18	19	20	21		17 - Martin Luther King Day (No School)
19	20	21	22	23				24	25	26	27	28		24 - Non Contract Day (No School)
26	27	28	29	30				31						
<b>August - 2021</b>					<b>5</b>			<b>February - 2022</b>					<b>19</b>	
M	T	W	T	F				M	T	W	T	F		
2	3	4	5	6		16 - All staff Opening Day -Building PD			1	2	3	4		
9	10	11	12	13		17 - District PD		7	8	9	10	11		
16	17	18	19	20		18 - District PD		14	15	16	17	18		
23	24	25	26	27		19 - Principal Days		21	22	23	24	25		21 - Presidents Day (No School)
30	31					25 - First Day of School		28						
<b>September - 2021</b>					<b>20</b>			<b>March - 2022</b>					<b>22</b>	
M	T	W	T	F				M	T	W	T	F		
		1	2	3		3 - Non Contract Day (No School)			1	2	3	4		
6	7	8	9	10		6 - Labor Day (No School)		7	8	9	10	11		17 - Spring Parent/Teacher Conferences (K-12 No School)
13	14	15	16	17				14	15	16	17	18		18 - PLC (No School) Team Directed
20	21	22	23	24				21	22	23	24	25		
27	28	29	30					28	29	30	31			
<b>October - 2021</b>					<b>20</b>			<b>April - 2022</b>					<b>16</b>	
M	T	W	T	F				M	T	W	T	F		
				1								1		
4	5	6	7	8		8 - PLC Day (No School)- Principal/District Directed		4	5	6	7	8		4-8 - Spring Break (No School)
11	12	13	14	15				11	12	13	14	15		
18	19	20	21	22				18	19	20	21	22		
25	26	27	28	29		27-29 - Fall Parent/Teacher Conferences (K-12 No School)		25	26	27	28	29		
<b>November - 2021</b>					<b>18</b>			<b>May - 2022</b>					<b>20</b>	
M	T	W	T	F				M	T	W	T	F		
1	2	3	4	5				2	3	4	5	6		6 - Non-Contracted Day (No School)
8	9	10	11	12		11 - Veteran's Day (No School)		9	10	11	12	13		
15	16	17	18	19				16	17	18	19	20		
22	23	24	25	26		24-26 - Thanksgiving Holiday (No School)		23	24	25	26	27		
29	30							30	31					30 - Memorial Day (No School)
<b>December - 2021</b>					<b>13</b>			<b>June - 2022</b>					<b>8</b>	
M	T	W	T	F				M	T	W	T	F		
		1	2	3						1	2	3		
6	7	8	9	10				6	7	8	9	10		10 - Last Day of School - Students dismissed 3 hours early
13	14	15	16	17				13	14	15	16	17		13-17 - Make up days if needed
20	21	22	23	24		20-31 - Winter Break (No School)		20	21	22	23	24		
27	28	29	30	31				27	28	29	30			
<b>Significant Dates</b>								<b>Elementary Grading Period</b>						
<b>TBD</b>						<b>Classified Employees Week</b>		<i>August 25 - November 22</i>					First Trimester	(60 days)
<b>TBD</b>						<b>Teacher Appreciation Week</b>		<i>November 23- March 8</i>					Second Trimester	(60 days)
<i>August - June</i>						ELPA21 Screening for Select Newly Enrolled Students		<i>March 9 - June 10</i>					Third Trimester	(60 days)
<i>September - October</i>						WaKIDS Inventory of Skills for Kindergarten		<b>Secondary Grading Period</b>						
<i>October - November</i>						WA-AIM Retake Exam for Select High School Students		<i>August 25- October 29</i>					First Quarter	(45 days)
<i>October - November</i>						Smarter Balance Retake for High School		<i>November 1 - January 21</i>					Second Quarter	(45 days)
<i>December - March</i>						WA-AIM Exams for Select Students Grades 3-8, 10, 11		<i>August 25 - January 21</i>					First Semester	(90 days)
<i>February - March</i>						ELPA21 Exam for English Language Learners		<i>January 25 - March 31</i>					Third Quarter	(46 days)
<i>March - June</i>						Smarter Balance Math & ELA Exam Grades 3-8, 10		<i>April 1 - June 10</i>					Fourth Quarter	(44 days)
<i>April - June</i>						WCAS Science Exam for Grades 5, 8, 11		<i>January 25 - June 10</i>					Second Semester	(90 days)
<i>April -</i>						Kindergarten Registration		<b>Parent Teacher Conference Schedule</b>						
<b>TBD</b>						<b>WHS Graduation</b>		Fall Conferences: Wednesday - Friday, flexible times available						
<b>TBD</b>						<b>WSHS Graduation</b>		Spring Conferences: Thursday, flexible times available						
								School Board Approved: 3/9/2021						
								Revised: 4/1/2021						



Has your family moved, changed phone numbers or emails recently? Make sure to update your contact information so you don't miss important information from WSD and your student's school. Updating your Information is easy, go to [wentacheeschools.org](http://wentacheeschools.org) and click on the "update my contact info" link or contact your school.

**District Communications**  
[wentacheeschools.org/communications](http://wentacheeschools.org/communications)



WSD uses a variety of communication methods to share important information and alerts with families. Your student's school will also use these communication tools to share specific information about school happenings, notices, and events. All communication will be available in both English and Spanish.

- Remind Text Messaging
- Weekly WSD e-newsletter
- Emails (flyers and special notifications)
- Peach Jar flyer emails and website flyer boards
- Automated Calls
- Website updates
- Social Media

Follow us on Twitter, Facebook and Instagram



## *Inside* WENATCHEE SCHOOLS

P.O. Box 1767  
Wenatchee, WA 98807-1767

Non-profit org.  
U.S. Postage PAID  
Permit No. 241  
Wenatchee WA 98801

**ECRWSS**  
**Postal Customer**

**Board:**  
Laura Jaecks, President  
Martin Barron, Vice President  
Maria Iñiguez  
Michele Sandberg, MD  
Julie Norton

**Superintendent:**  
Dr. Paul Gordon  
(509) 663-8161  
[gordon.paul@wentacheeschools.org](mailto:gordon.paul@wentacheeschools.org)

Inside Wenatchee Schools is published quarterly by the Office of Communication and Community Engagement, Diana Haglund Editor (509) 663-8161.

### NON-DISCRIMINATION STATEMENT - WENATCHEE PUBLIC SCHOOLS

The Wenatchee School District does not discriminate in any programs or activities on the basis of sex, race, creed, religion, color, national origin, age, veteran or military status, sexual orientation, gender expression or identity, disability, or the use of a trained dog guide or service animal and provides equal access to the Boy Scouts and other designated youth groups. The following employees have been designated to handle questions and complaints of alleged discrimination: Title IX Coordinator, Section 504, Kory Kalahar Ed.D., Assistant Executive Director of Learning & Teaching. Civil Rights Compliance and ADA Coordinators: Dr. Kory Kalahar, Assistant Executive Director of Learning & Teaching (for students) [kalahar.k@wentacheeschools.org](mailto:kalahar.k@wentacheeschools.org) and Kelly Lopez, Executive Director of Human Resources (for staff) [lopez.k@wentacheeschools.org](mailto:lopez.k@wentacheeschools.org) 235 Sunset Ave, Wenatchee WA, 98801 (509-663-8161).