

# INSIDE

# Wenatchee Schools

## Capital Improvement Bond Information Edition

### Introduction to the Bond Issue

The Wenatchee School Board set February 11, 2014 as the date for an upcoming \$66.5 million bond issue election. Part of a ten-year plan, the bond issue would address capital improvement projects to alleviate overcrowding and provide a safe instructional environment. The plan includes two phases.

#### TWO PHASES

Phase 1 will remodel and expand Lincoln Elementary School, construct a new Washington Elementary School, modernize the Special Education/Early Childhood Learning Center (formerly known as the Castlerock Annex), make safety improvements and remodel the gymnasium and grandstands at Pioneer Middle School, and make safety improvements at Mission View Elementary School's parking lot and related pedestrian/automobile areas.

Phase 2 will focus on Wenatchee High School, along with Mechanical Systems Upgrades at Foothills Middle School. Phase 2 is anticipated to go to voters in 2017.

A Capital Facility Committee made up of citizens, parents, staff and school-design-

professionals participated in a study of all school district facilities. They gathered input from principals and the maintenance department, site visits and other data collection sources, including the work of previous bond committees. The Committee also built upon the work of a separate Secondary School's Study Committee, whose work focused on Wenatchee High School. The work of these combined committees encompasses over two years of information gathering, staff input, and community surveys.

#### STATE SCHOOL CONSTRUCTION ASSISTANCE: \$10.3 MILLION PLUS

Washington State assists school districts with the costs of construction and modernization of buildings used for instructional purposes. State assistance varies with the amount of assessed valuation for property tax purposes in each school district. The more wealth (property value) per pupil the district has, the lower the percentage of state assistance.

State School Construction Assistance for Washington Elementary School is estimated to be \$5 million dollars. Lincoln Elementary School

State Matching funds are estimated to be \$5.3 million. State Construction Assistance may also be available for the Special Education, Early Childhood Development, and will be determined as plans are finalized for modernization of that facility.

#### DEFINITIONS: BOND AND LEVY

A bond is a long term financing option, usually twenty years, for school district capital improvements including land purchases, new buildings, renovations, or other long term capital improvements. Voters approve the issuance of bonds and the use of local property taxes to repay such bonds.

An educational programs and operation levy (also called a maintenance and operations levy) is a local property tax authorized by voters to fund basic educational programs and operations. These levies are limited to a period not to exceed 4 years.

#### IMPACT OF THE BOND ON PROPERTY OWNERS (TAXPAYERS)

The estimated bond tax rate is \$1.77 per \$1,000 of assessed value in 2015.

#### VOTER APPROVAL REQUIREMENTS

Bond issues are authorized at a special or regular election. For information, contact the Chelan County Elections Office at 667-6808. Website: [www.elections.chelancountywa.gov](http://www.elections.chelancountywa.gov)

### IN THIS ISSUE

Introduction to the Bond Issue ..... 1

Projects Summary..... 2

How the School Board Chose Projects ..... 2

Impact to Taxpayers. 2

### PROJECTS

Lincoln ..... 4

Washington ..... 5

Special Education +.. 6

Pioneer Gym ..... 7

Mission View Pedestrian Safety Project..... 8



### Capital Improvement Projects Bonds Election February 11, 2014

#### PHASE 1 \$66.5 million:

Lincoln Elementary • Washington Elementary • Special Education & Early Childhood Learning Center  
Pioneer Middle School gymnasium and bleachers • Mission View Elementary School Pedestrian Safety & Parking Project

#### PHASE 2 \$30 million (projected 2017 election date)

Wenatchee High School • Foothills Mechanical Systems Upgrade

Wenatchee School District No. 246  
P.O. Box 1767  
Wenatchee, WA 98807-1767

Non-profit org.  
U.S. Postage  
PAID  
Permit No. 241  
Wenatchee WA 98801  
**ECRWSS**

Postal Customer





# PROJECTS SUMMARY

## Phase 1: Capital Bond Cost: \$66.5 million

### PROJECT 1: LINCOLN ELEMENTARY SCHOOL \$23.7 MILLION

The student population at Lincoln Elementary has outgrown the facility. Ten classrooms are housed in portables. The Lincoln modernization, additions and site improvements will add a wing, windows, lighting, bathrooms, floors, heating and air conditioning, a gym and library. The new wing will replace the twelve portable classrooms.

### PROJECT 2: WASHINGTON ELEMENTARY SCHOOL \$29.5 MILLION

Washington elementary, built in 1953, is the oldest school in the district.

- The single corridor design prohibits remodeling construction while school is in session due to noise and construction danger.
- A new school will be built on the same site in a new location and the old school will be demolished when the new one is completed. This

will prevent having to move students somewhere else during the school year.

- As part of the new school, the entire student drop off and pickup area would be renovated and reconfigured on the existing site to increase student safety.

### PROJECT 3: SPECIAL EDUCATION AND EARLY CHILDHOOD LEARNING CENTER \$6.1 MILLION

Located next to Washington Elementary School, this facility was built in 1959. The building will be modernized to fully meet code, have new mechanical and electrical systems, fully update roofing, insulation, doors and windows, provide handicapped accessibility and new finishes.

### PROJECT 4: PIONEER MIDDLE SCHOOL GYMNASIUM: \$6.55 MILLION

Pioneer Middle School was remodeled in 2005, but the gym was left unchanged from its original construction in 1956. This bond will modernize the gymnasium, address interior and exterior safety and

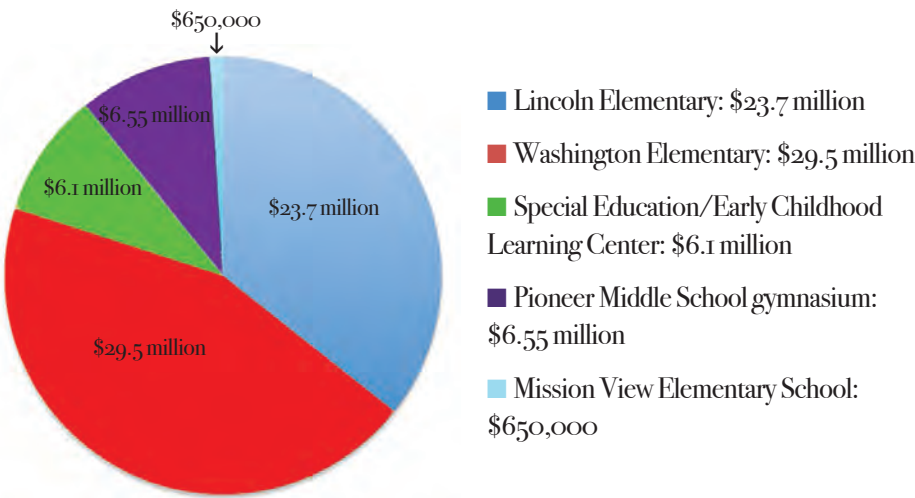
infrastructure improvements, which includes new outdoor grandstands.

### PROJECT 5: MISSION VIEW ELEMENTARY SCHOOL PARKING LOT: \$650,000

The Mission View Elementary School project is to redesign the parking lot to improve safety for walkways used by students and other pedestrians. It would create a new, safer student pick up and drop off area for buses and parents, and add additional parking.

### PHASE 2 CAPITAL BOND COST: \$30 MILLION

Anticipated for 2017 election, Phase 2 will concentrate on Wenatchee High School. A Secondary Facilities Study Committee recommended a number of safety and instructional needs and possible solutions. The Foothills Middle School mechanical systems upgrades will also be redone as part of Phase 2.



## How the School Board Selected Projects

At the request of the Wenatchee School Board a citizen’s Facilities Committee was formed to study all the facilities in the district and make a recommendation to the board as to which facilities require modernization, remodel, or new construction. The committee recommended five projects to the School Board.



Lincoln’s exterior walls lack insulation, windows are single pane and lack energy efficiency. Exterior doors to every classroom is a security concern.

Chaired by local businessman John McQuaig, the Committee also completed a 10-year facilities plan. The full report is available at the District Office or online at [wenatcheeschools.org](http://wenatcheeschools.org) (choose Bond Information).

### COMMITTEE MAKEUP AND PROCESS

The Committee was made up of about thirty people, including community members, parents, teachers, principals, staff members and students. The committee studied each of the buildings in the district. Committee members travelled as a group to each facility. Architects worked with the committee to provide cost estimates of all the various projects.

They also used an estimate of the remaining useful life in years for each facility, an estimate prepared by architects and district maintenance personnel.

Using all that information, committee members voted to prioritize the projects.

### RESULTS

The two facilities the committee found to be most in need of renovation were Lincoln Elementary and Washington Elementary. In their report to the School Board the Committee pointed out that both Lincoln and Elementary use portables to house overflow students. Along with portables, Washington Elementary overflow students are housed in the Special Education / Early Childhood Center next door. The ripple effect is that Early Childhood students are displaced; some preschoolers are housed in the former WestSide High building, which was originally built as dorms for Wenatchee Valley College. The District leases the space since it no longer owns that building.

The Committee recommended that a new Washington Elementary be built as opposed to renovating the old school. Factors pointed out to the Board to support the recommendation included the age of the existing building, the ability to house

students in the existing Washington during construction, and cost, among other issues. For a complete list of factors see the complete project description on page five.

Both Lincoln and Washington have similar issues: exterior doors (every classroom has a door to the outside, which is a security concern); exterior walls lack insulation and windows are single pane; outdated mechanical systems and plumbing; and outdated lighting, among other issues.

Although the Special Education / Early Childhood Learning Center was built just six years after Washington, the Committee found the building far more structurally sound because of it’s solid brick construction. So the Committee recommended a modernization instead of a new building. A new Washington School, with the space to house all its elementary students, would free up space in the Center to allow Special Education staff to have office space and allow Early Learning students classroom space.

Continued on page 3.



# School Board Selected Projects

continued from page 2.

Pioneer Middle School’s gymnasium, locker room and outside grandstands were included in the recommendation because of deterioration and leaking. This area is original to Pioneer’s 1956 construction.

The Mission View School Pedestrian and Safety project included in the Committee’s recommendation will be done in collaboration with Chelan County. The County is undertaking efforts to increase pedestrian safety in the area around Mission View Elementary to provide sidewalks and safe areas where kids can walk and queue up for transportation.

Each of these projects is

stable student population at the high school with no prediction of increased growth as one factor. They also found that the large size of WHS offered more opportunities for students.

The committee recommended the formation of smaller learning communities within the high school. Since then programs have been formed to follow create smaller learning communities, such a iFrosh, a program which groups freshmen into a cohort of students and teachers.

The Secondary Committee also recommended adding students to WestSide High to help alleviate overcrowding at Wenatchee High School (WHS).



Mission View Imagine Learning teacher Fred Martinez works with a first grader. Mission View’s pedestrian and parking lot project will be in collaboration with Chelan County to improve sidewalks, drop off sites, and increase pedestrian safety around the school

described in detail in this newsletter on pages 4 – 8.

## WHAT ABOUT THE HIGH SCHOOL?

Another committee was formed in 2010 to focus exclusively on secondary schools. The Secondary School Committee produced a report and presented it to the School Board early in 2011. The report said that many members had joined the committee thinking it would be advantageous to build a second high school. At the end of their report they came to the conclusion that a new high school wasn’t the best plan of action. They cited a

The Secondary School committee made some specific recommendations for modernization, additions and remodels to the high school that would alleviate the need for portables currently in use and address safety concerns.

The high school capital project recommendation will go to voters in 2017 (estimated) as Phase 2 of the bonds issue.

Matching funds from the State will be available. The 2014 OSPI State Funding Assistance Percentage for Wenatchee is 64.8%.



Pinch points in hallways due to overcrowding are one of the issues being addressed at Wenatchee High School. Additional facility needs for WHS will go to the voters in Phase 2 of the bond issue election.

# Impact on Taxpayers

Q. What will be the impact of the bond tax rate on property owners (taxpayers)?

A. The estimated bond tax rate is \$1.77 per \$1,000 of assessed value in 2015.

Q. What tax impact will the proposed bonds have on a home assessed at \$186,000?

A. The current bond rate in 2013 is \$128.34, based on the current bond rate of \$0.69 per \$1,000 of assessed value.

The estimated bond rate for 2015 is \$329.22, based on the 2014 estimated bond rate of \$0.73 + \$1.04 (increased new debt from proposed bond) = estimated bond rate of \$1.77 per \$1,000 of assessed value.

Q. Is there a special tax exemption for senior or disabled citizens?

A. Yes. For information about tax exemptions contact the office of the Chelan County Assessor at 667-6365, website: www.co.chelan.wa.us/assessor

Q. Will the District receive matching money from the State of Washington for the Projects?

A. Yes. The District anticipates that it will receive approximately \$10.3 million — \$ 5 million for Washington and \$5.3 million for Lincoln, plus matching funds for the Special Education, Early Childhood Learning center, which have not yet been determined.

## Wenatchee tax rates compared to local and comparable-sized school districts as of December 2013

School District	Bond rate per \$1,000 assessed value	M&O capital projects levy rate per \$1,000 assessed value	Subtotal	Addition of Wenatchee's bond	Total
Pasco	2.207	4.455	6.662		6.662
Waterville	1.076	5.466	6.542		6.542
Cashmere	2.225	4.304	6.529		6.529
Eastmont	1.887	3.050	4.937		4.937
Kennewick	1.545	3.364	4.909		4.909
Walla Walla	1.249	3.649	4.898		4.898
Moses Lake	1.672	3.215	4.887		4.887
*Wenatchee	0.687	3.102	3.789	1.083	4.872
Richland	1.170	3.212	4.382		4.382
Cascade	0.416	1.212	1.628		1.628

\* Wenatchee: \$0.687 + \$1.083 = \$1.77 estimated bond rate per \$1,000 of assessed value for 2015

## Comparison of the proposed bond tax rate to prior rates

Collection Years	Bond Rate per \$1,000 of assessed value
2004	\$2.56
2005	\$2.48
2006	\$2.34
2007	\$2.08
2008	\$0.88
2009	\$0.85
2010	\$0.73
2011	\$0.68
2012	\$0.66
2013	\$0.69
2014	\$0.73 estimated
2015	\$1.77 estimated

Find out more information about the bond and your schools visit our website at: wenatcheeschools.org



# LINCOLN

## Elementary School

Capital Bonds Phase 1: \$66.5 million

**PROJECT 1 LINCOLN ELEMENTARY SCHOOL \$23.7 million**

State School Construction Assistance is an estimated \$5.3 million. The student population at Lincoln Elementary has outgrown the facility. Ten classrooms are housed in portables. The Lincoln modernization, additions and site improvements will add a wing, windows, lighting, bathrooms, floors, heating and air conditioning, a gym and library. The new wing will replace the ten portable classrooms.

### Lincoln Elementary Current Situation

- **OVERCROWDING**  
Ten classrooms are housed in portables.

► **CAFETERIA TOO SMALL FOR ALL STUDENTS AND DOUBLES AS GYMNASIUM**  
Some students eat lunch in classrooms because the cafeteria is too small. PE classes lose gym time.

► **LIGHTING**  
Lincoln still uses T12 fluorescent tubes for lighting. The Department of Energy has mandated that manufacture of these lights cease in 2012, making replacement of tubes difficult and expensive. T12 lights are less energy efficient than modern lighting products.
- **EXTERIOR WALLS AND WINDOWS**  
The exterior walls of Lincoln are constructed of single pane glass and uninsulated concrete block, lacking in energy efficiency and resulting in higher energy costs. The HVAC system is fairly new, so insulated walls and windows will enhance comfort and energy efficiency, and result in a better learning environment and energy cost savings.

► **ROOF**  
Roof tiles are easily broken creating continual maintenance costs.
- **MECHANICAL SYSTEMS**  
Domestic hot water loop feeding the 100 and 200 wing has deteriorated and no longer serves these classroom sinks with hot water on demand as designed.

► **RESTROOMS NOT ADA COMPLIANT**  
Restrooms are not compliant with the American with Disabilities Act (ADA).

► **PARKING, STUDENT PICK UP AND DROP OFF**  
Parking lot size and car pick-up areas were built for a lower student population, and don't accommodate the current traffic volume.

### How Would the Bonds Address These Needs?

- Add a wing to house the ten classroom currently in portables.
- Add a library.
- Update HVAC (heating ventilation air conditioning) in 300 wing.
- Insulate walls and replace single pane windows and eliminate doors to the outside..
- Upgrade obsolete T12 lighting with T-8 or LED fixtures.
- Modernize restrooms and flooring.
- Provide a new roof.
- Student parking lot, drop off and pickup area would be renovated and reconfigured on the existing site to increase student safety.
- Modernize fire alarm and electrical system.
- Add full size gymnasium.
- Modernize and enlarge kitchen facilities.
- State School Construction Assistance is an estimated \$5.3 million.



Cafeteria too small for student population, and doubles as gymnasium.



Children walking into traffic pick up / drop off area, and through the parking lot, is a concern. In this photo they are walking past portables located adjacent to the parking lot. Portables house overflow students.

Sep 1  
**2016**  
Project Complete  
School Opens

April 1  
**2015**  
Construction  
Begins

Feb - March  
**2015**  
Contractor  
Bids

Sept 2014  
Jan 2015  
Architectural  
Design  
Complete



# WASHINGTON

## Elementary School

Capital Bonds Phase 1: \$66.5 million

### PROJECT 2 WASHINGTON ELEMENTARY SCHOOL \$29.5 million.

Washington is eligible for funding from the State. State School Construction Assistance is an estimated \$5 million. Washington Principal **Keith Collins** says, “Washington Elementary was built in 1953. It is the oldest building in the Wenatchee School District. It hasn’t had much in the way of upgrades in those 61 years. We’re still operating on the same HVAC systems from 61 years ago that you cannot buy parts for any more. We

have almost 600 students now, and Washington Elementary was built for half the number of students we currently have. While you don’t see the overflow it’s because we occupy eight classrooms in the building next door, the Special Education and Early Childhood wing. If we didn’t have that particular facility, we would have eight more portables out there in addition to the six that we have now.”

### Washington Current Situation

- ▶ **AGE**  
Built in 1953. It is the oldest building in the Wenatchee School District. Upgrades have been minimal over those 60+ years.
- ▶ **OVERCROWDING**  
Washington currently has nearly 600 students. The facility was built for 300. Students are housed in portables and in the Castlerock/ Special Education Annex.
- ▶ **DESIGN**  
Classrooms line one single, 120-yard long hallway, which causes traffic flow problems for students and staff.
- ▶ **ENERGY EFFICIENCY AND LIGHTING**  
Single pane windows throughout are not energy efficient. T12 fluorescent tube lighting is obsolete (Dept. of Energy prohibited the manufacture of T12 lighting in 2012).
- ▶ **SECURITY**  
Every classroom has a door to the outside, allowing access to every classroom from the outside, which is a major security concern.
- ▶ **HVAC**  
Some of the heating, ventilation and air conditioning system was upgraded in the 1990s and some is old steam boiler heating, which is obsolete. Parts are no longer available and classroom temperature regulation does not work well.
- ▶ **NO CAFETERIA**  
Lunch is served in the gymnasium and eaten in classrooms. Each class loses 30 minutes of instructional time each day. PE classes lose 90 minutes of gymnasium time.
- ▶ **PARKING, STUDENT PICK UP / DROP OFF**  
Washington is a mostly walking school. Students are dropped off and picked up by parents, or walk in an area never designed to accommodate the current amount of traffic. Congestion causes safety issues.
- ▶ **ASBESTOS**  
The District has taken all precautions to ensure that existing asbestos containing materials in Washington Elementary do not present a hazard or are protected. Asbestos wrapped pipes are in sealed tunnels and asbestos-containing floor tiles are well-maintained or encapsulated under carpeting.

Sept 16  
**2016**  
Project Complete  
School Opens

June 1  
**2015**  
Construction  
Begins

April-May  
**2015**  
Contractor  
Bids

Oct-March  
**2015**  
Architectural  
Design  
Complete

### How Would the Bonds Address These Needs?

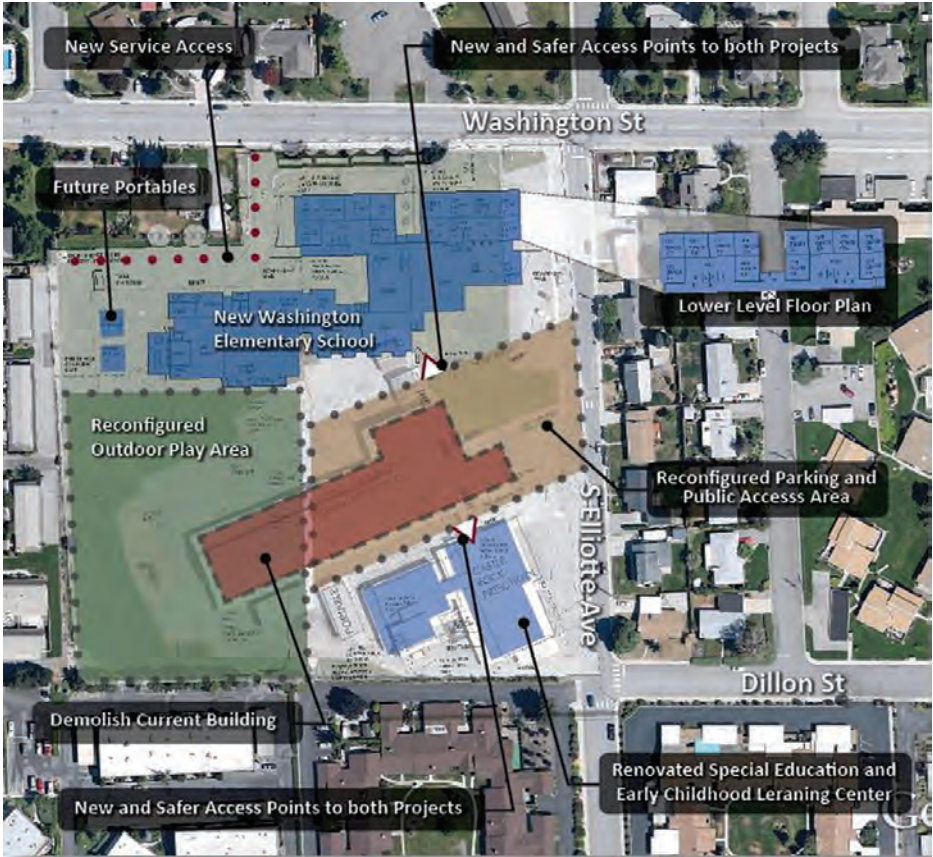
- A new school will be built on the same site in a new location and the old school will be demolished when the new one is completed.
- A new school will prevent having to move students somewhere else during the school year, saving money and displacement.
- A new school will house the entire Washington population.
- As part of the new school, the entire student drop off and pickup area would be renovated and reconfigured on the existing site to increase student safety.



A deteriorated window frame.



Lunch is served at the same time, in the same place, as children assembled to listen to a visiting author.



Portables on left house overflow students. Every class had a door to outside, which is a security concern. Single pane windows line the exteriors. The single corridor design 120-yards long causes traffic-flow problems for students and staff between class.



# SPECIAL EDUCATION & EARLY CHILDHOOD Learning Center

PROJECT 3 Capital Bonds Phase 1: \$66.5 million

**SPECIAL EDUCATION & EARLY CHILDHOOD LEARNING CENTER \$6.1 million**

Located next to Washington Elementary School, this facility was built in 1959. Some modernization was completed in 1978. A renovation in the mid 1990s included the addition of a multipurpose room and classrooms. The unrenovated portion of the building contains the original classrooms which

are served by steam heating only. A study by Forte Architects reported that the unrenovated toilet facilities throughout the school are aging, are typically non ADA compliant, and most likely do not meet present water conservation standards, and are in need of replacement.

## Special Education & Early Childhood Learning Center Current Situation

- **AGE**  
Built in 1959. Upgrades have been minimal since then.

► **OVERCROWDING**  
The Center is located next to Washington Elementary School. Since Washington currently has nearly 600 students in a facility built for 300, the overflow students are housed in the Center classrooms, displacing special education and early childhood learning students.

► **PRESCHOOL IN ONE LOCATION**  
A portion of the preschool students are housed in the old WestSide High Facility, a building that was vacated by WestSide due
- to poor conditions. Some preschool students were previously located in an Olds Station building. A new Washington Elementary building and a Center modernization would provide space for all school district preschool students in one place.

► **ENERGY EFFICIENCY**  
Single pane windows and 55-year-old doors, roofing and insulation provide poor energy efficiency.

► **PARKING, STUDENT PICK UP AND DROP OFF**  
Lack of ADA compliant access to special education classrooms and offices. Washington students are dropped off and picked up by
- parents, or walk in front of the Center, an area never designed to accommodate the current amount of traffic. Congestion causes safety issues.

► **HVAC**  
The original heating, ventilation and air conditioning system is obsolete, parts are no longer available and classroom temperature regulation does not work well.

► **OFFICE SPACE** Many district Special Education therapists and psychologists currently have no office space. Some files are housed in bathroom areas due to lack of space.

Dec 1  
**2016**  
Project Complete  
School Opens

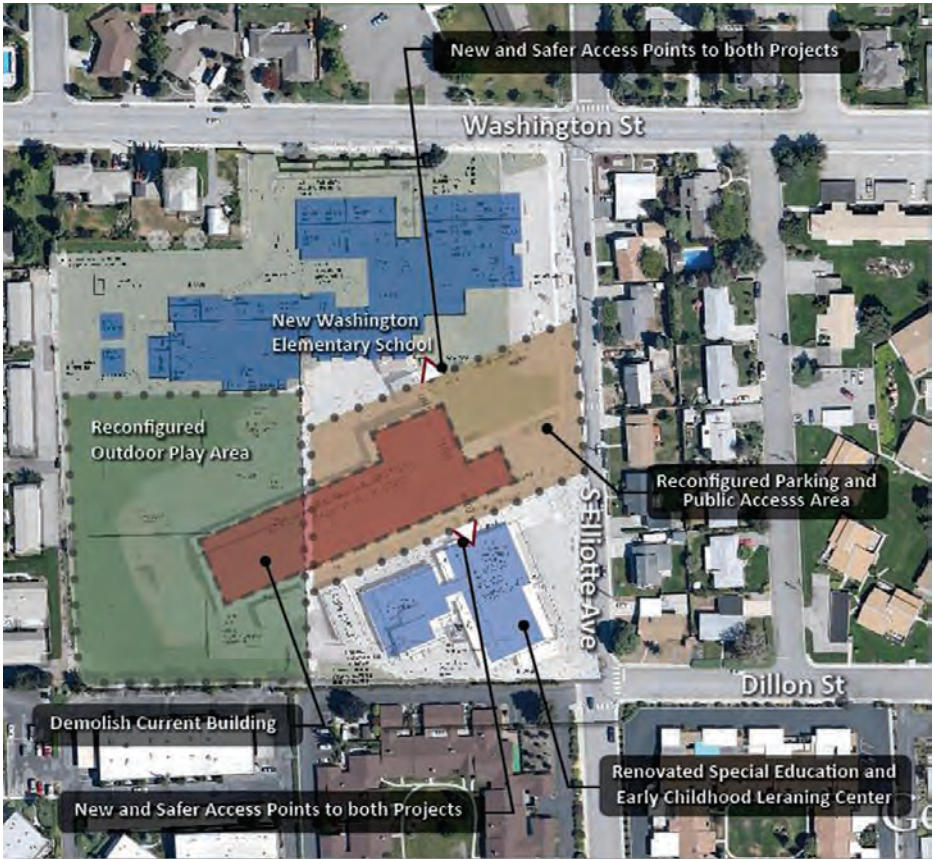
June 1  
**2016**  
Construction  
Begins

April-May  
**2016**  
Contractor  
Bids

March 1  
**2016**  
Architectural  
Design  
Complete

## How Would the Bonds Address These Needs?

- Modernize to fully meet code.
- Replace the mechanical and electrical systems.
- Update roofing, insulation, doors and windows.
- Add classroom and office space.
- Provide handicapped accessibility (ADA compliant).
- Provide classroom space for special education students, early learning students.
- Provide office space for special education therapists and psychologists.



Special Education Director Trisha Craig stands outside the Special Education and Early Childhood Learning Center and looks toward Washington Elementary. Built in 1959, the Center’s classrooms are filled with Washington Elementary overflow students, displacing the Early Childhood classes and Special Education class and office space.



Preschool space is leased in the old WestSide High /WVC Dorms building, which the school district no longer owns.



PIONEER

Middle School

Capital Bonds Phase 1: \$66.5 million

PROJECT 4 PIONEER MIDDLE SCHOOL GYMNASIUM: \$6.55 million

Pioneer Middle School was remodeled in 2005, but the gym was left unchanged from its original construction in 1956. This bond will modernize the gymnasium, address interior and exterior

safety and infrastructure improvements, which includes new outdoor grandstands.

Pioneer Current Situation

- EXTERIOR DOORS
- Exterior doors in the gymnasium are completely worn out, not very secure, and some do not operate properly. They are energy inefficient.
- DETERIORATED LOCKER ROOMS
- Locker room walls are crumbling and are in various stages of deterioration requiring bracing and concrete patches. Showers leak badly. Fire exit not ADA (Americans with Disabilities Act) compliant.
- DETERIORATED LOCKER ROOM CEILING
- Slab which forms the floor of grandstands
- above is also the ceiling of the locker rooms. Slab is badly deteriorated. The slab/ceiling leaks into the locker room.
- DETERIORATED LOCKERS
- Lockers are broken and do not secure student belongings.
- VENTILATION AND BOILER ROOM
- Locker room ventilation system is obsolete. Two unused steam boilers from the 1950s were left in place.
- GYMNASIUM SAFETY RAILINGS
- Safety railings in gymnasium balcony do not meet current building code.
- DETERIORATING GRANDSTANDS
- The exterior grandstands attached to the Pioneer gymnasium (north) are the original 1956 structure. Although deemed structurally sound, they do not meet current safety, ADA or earthquake codes.
- OBSOLETE STAGE AREA
- Obsolete stage rigging is no longer used. The old stage could be converted into a more effective teaching area.

How Would the Bonds Address These Needs?

- Modernize locker rooms, the stage, and the lobby.
- Modernize grandstands on north side.
- Bring all facility up to current code for safety, ADA, earthquake.
- Update gymnasium electrical system.
- Upgrade mechanical systems, including plumbing and ventilation.
- Remove old steam broilers and replace with storage space.
- Rebuild grandstands and supporting slab which serves as the locker room roof and ceiling.
- Improve building security.
- Reduce utility costs (electrical, water and sewer).
- Better serve the public and for extra curricular events.

Sep 1 2016

Project Complete  
School Opens

May 1 2015

Construction Begins

Feb-March 2015

Contractor Bids

Sept 2014  
Jan 2015

Architectural Design Complete



Locker room walls are deteriorating and lockers are broken.



Concrete slab on outdoor bleachers also serves as roof to locker rooms. The slab is deteriorating.



Conceptual Drawings Only



# MISSION VIEW

## Elementary

Capital Bonds Phase 1: \$66.5 million

**PROJECT 5 MISSION VIEW ELEMENTARY SCHOOL PEDESTRIAN SAFETY AND PARKING PROJECT: \$650,000**

The Mission View Elementary School project is a collaborative project between the Chelan County Publics Works and Wenatchee School District to improve safety for students walking to school and other pedestrians. It would create a new, safer student pick up and drop off area for buses and parents, and add additional parking.

### Mission View Current Situation

- ▶ Lacking ADA (Federal Americans with Disabilities Act) compliant sidewalks.
- ▶ Only 1 ADA compliant parking stall.
- ▶ No vehicle turn around area for student drop off and pick up.
- ▶ Narrow or nonexistent sidewalks along Terminal Street.
- ▶ Street crossings lack place for kids to stand and line up.
- ▶ Street crossings at two streets are not ADA compliant.
- ▶ Nearby street crossings are not pedestrian friendly and lack safe places for pedestrians to walk and stand.

### How Would the Bonds Address These Needs?

- Adds 53 parking stalls for a total of 122.
- New one-way driveway entrance and exit for orderly drop off and pick up.
- New drop off sidewalk and wider sidewalks next to school.
- Adds new bus queuing area with ADA compliant bus access path.
- Revises bus lane student drop off and pick up.
- Revises fire lane access.
- Creates 5 ADA compliant stalls in main parking area.
- Creates ADA compliant curb ramps at the two street crossings next to the school.



*Nearby street crossings are not pedestrian friendly and lack safe places for pedestrians to walk and stand.*



*No turnaround in school parking lot for parents to pick up or drop off children.*



*Street crossings lack place for pedestrians to stand and no sidewalks for walking.*



Sep 1  
**2014**  
Project Complete  
School Opens

June 1  
**2014**  
Construction  
Begins

April-May  
**2014**  
Contractor  
Bids

March 1  
**2014**  
Architectural  
Design  
Complete