

# CONTENTS

Advising	4
Bookstore	4
Campus Tours	5
Changes in Registration	2
Classroom Legend	4
Contiguous Counties	2
Cost	2
Crime Awareness	5
Directory Information	5
Emergency Notification System	5
Enrollment Flowchart	8
Equal Opportunity Statement	6
FALL	
Calendar	21
Main Campus Schedule: 16 Weeks	22
Main Campus Schedule: 1st 8 Weeks	29
Main Campus Schedule: 2nd 8 Weeks	31
<b>Online: 1st 8 weeks</b>	<b>30</b>
<b>Online: 2nd 8 weeks</b>	<b>32</b>
Main Campus Final Exam Schedule	33
<i>Coffeyville Technical Calendar</i>	51
<i>Coffeyville Technical Campus Schedule</i>	52
<i>Columbus Technical Calendar</i>	64
<i>Columbus Technical Campus Schedule</i>	65
Interim Courses	36
Fees	3
Gold Card	3
Internet Access	4
Library Hours	4
Mission Statement	1
Online Degree Seekers	7
Partnerships in Education	7
Payment of Tuition & Fees	3
Raven ACCESS	4
Registration / Finalization Process	2
Release of Information	5
Special Accommodations	5
Special Fees	3
SPRING	
Calendar	38
Main Campus Schedule: 16 Weeks	39
Main Campus Schedule: 1st 8 Weeks	45
Main Campus Schedule: 2nd 8 Weeks	47
<b>Online: 1st 8 weeks</b>	<b>46</b>
<b>Online: 2nd 8 weeks</b>	<b>48</b>
Main Campus Final Exam Schedule	49
<i>Coffeyville Technical Calendar</i>	57
<i>Coffeyville Technical Campus Schedule</i>	58
<i>Columbus Technical Calendar</i>	67
<i>Columbus Technical Campus Schedule</i>	68
SUMMER I	
Calendar	10
Main Campus Schedule	11
<i>Coffeyville Technical Campus Schedule</i>	13
<i>Columbus Technical Campus Schedule</i>	14
SUMMER II	
Calendar	16
Main Campus Schedule	17
<i>Coffeyville Technical Campus Schedule</i>	19
<i>Columbus Technical Campus Schedule</i>	19
Student ID Cards	3
Testing & Placement	4
Wellness Card	3

## SUMMER I SESSION

MAIN CAMPUS BEGINS June 4, 2018

## SUMMER II SESSION

MAIN CAMPUS BEGINS July 2, 2018

## FALL SESSION

MAIN CAMPUS BEGINS August 15, 2018

TECHNICAL CAMPUSES BEGIN August 15, 2018

FALL INTERIM BEGINS December 11, 2018

## SPRING SESSION

MAIN CAMPUS BEGINS January 9, 2019

TECHNICAL CAMPUSES BEGIN January 9, 2019

### MISSION

Coffeyville Community College is dedicated to identifying and addressing community and area needs, providing accessible, affordable quality education and training, and promoting opportunities for lifelong learning

Coffeyville Community College is a public, two-year college governed by a publicly elected, six-member Board of Trustees representing the community college district.

Becky Barnhart, Chairman  
 David Baldwin, Vice Chairman  
 Lue Barndollar  
 Sherri Melander  
 Keith Osborn  
 Robert York  
 Linda Moley, President  
 Aron Potter, Vice Pres. for Academic Services  
 Jeffrey D. Morris, Vice Pres. for Operations and Finance  
 Dr. Marlon Thornburg, Vice Pres. for Innovation and Business Initiatives  
 Deborah Oestmann, Dean of Institutional Research and Enrollment Management  
 Ryan McCune, Dean of Student Life  
 Yvonne Hull, Sr. Director of College Relations, Marketing & Recruiting.

Main Campus  
 620.251.7700 & 877.51.RAVEN  
 ~  
 Coffeyville Technical Campus  
 620.252.7550 & 877.51.RAVEN  
 ~  
 Columbus Technical Campus  
 620.429.3896 & 800.208.8324  
 ~  
[www.coffeyville.edu](http://www.coffeyville.edu)

Coffeyville Community College was founded in 1923 and is accredited by The Higher Learning Commission and a member of the North Central Association, [www.hlcommission.org](http://www.hlcommission.org), 312.263.0456.

CCC is an equal opportunity institution. In compliance with the Americans with Disabilities Act, all reasonable efforts to accommodate persons with disabilities will be made.

This schedule is for information only and does not constitute a contract. The College reserves the right to change, modify or alter without notice all fees, charges, tuition expenses or costs of any kind. Furthermore, the College reserves the right to add or delete without notice any course offerings or information in this publication.

## REGISTRATION / FINALIZATION PROCESS

Registration consists of students selecting appropriate courses, program planning with an academic advisor and payment of tuition and fees to the College in full or by arranging an acceptable payment plan through the Business Office prior to the first day of classes. Payments can be made on Raven ACCESS, by mail, or in the Business Office.

Students should plan their academic programs carefully in order to keep subsequent changes to a minimum. **FAILURE TO ATTEND CLASS, ONCE REGISTERED, DOES NOT CANCEL REGISTRATION IN ANY CLASS OR CLASSES**, nor does it release a student's financial obligation.

## ONLINE DEGREE SEEKING STUDENTS

Students who are seeking to earn a degree online should contact the Director of Distance Learning at 620-252-7076 for academic advising.

### NOTE

Registration for six (6) credit hours or less may be taken by telephone through the last business day of the week prior to the start of classes. Enrollment information must be completed in the Advising Office. A student must finalize telephone registration by the last business day of the week prior to the first class meeting or be dropped from courses.

## CHANGES IN REGISTRATION

If a student wishes to change class time, drop a class or add a class, he/she must contact the Registrar's Office and complete a Schedule Change Form. The procedure is not finalized until the student receives authorized signatures on the form including a signature from the Registrar's Office and the student's academic advisor.

Failure to change registration, except according to the above procedure, will result in a grade of "F" recorded on the permanent record of the student. A notation of "W" (withdrawal) will be made on the student's permanent record if he/she officially withdraws prior to the published withdrawal date on the master calendar.

## ADDING A COURSE

Students who wish to add a course after their initial enrollment must complete a Schedule Change Form in the Registrar's Office.

A student will be allowed to add a course (with Instructor approval) up to and including the Final Add Date as indicated on the master calendar. The Final Add Date is determined by calculating 25% of the allotted class time. Courses not meeting the entire semester will be calculated in the same manner. Any class added after the semester begins requires the signature (approval) of the class instructor and assigned advisor. If a student adds a class after making their initial payment or payment plan arrangements, they assume full financial obligations for any tuition and fees associated with the course(s) added.

## DROPPING A COURSE

Students who wish to drop a course after their initial enrollment must complete a Schedule Change Form in the Registrar's Office.

A student who withdraws from a course after the 20th day of classes will receive a "W" (no grade or penalty) for the course.

Any class dropped after the semester begins requires the signature of the class instructor and assigned advisor.

A student will be allowed to drop a course up to and including the Final Drop Day as indicated on the master calendar. The Final Drop Day is determined by calculating 80% of the allotted class time. Courses not meeting the entire semester will be calculated in the same manner.

A student remains responsible for payment of tuition and fees if the drop occurs after the tuition refund date as indicated on the master calendar.

If a student is dropped from an online course by the Registrar's Office for non-completion of 25%, the student remains responsible for the charges incurred by the online class.

## WITHDRAWAL FROM COLLEGE

A student who wishes to withdraw from the College before the end of the semester must complete an official Schedule Change Form and confer with the Director of Financial Aid, Registrar, and Business Office Clerk. A student remains responsible for payment of tuition and fees after the tuition refund date. Additionally, a student who attends less than 60% of the allotted class time and receives federal financial aid will be responsible for returning a portion of that aid. A student who officially withdraws from College before the withdrawal deadline will receive a "W" (no credit or penalty) for each course.

## COST

Kansas Resident...\$85.00 per credit hour\*

Contiguous Counties...\$95.00 per credit hour\*

Includes Missouri and Oklahoma only

Non-Resident...\$134.00 per credit hour\*

International...\$212.00 per credit hour\*\*

\*Includes \$46.00 for Incidental and Building Fees

\*\* Includes \$46.00 for Incidental and Building Fees and a \$62.00 International Fee.

## Nursing

Kansas Resident...\$140.00 per credit hour\*

Missouri and Oklahoma Residents...\$157.00 per credit hour\*

Non-Resident...\$241.00 per credit hour\*

\*Includes \$46.00 for Incidental and Building Fees

## Welding

Kansas Resident...\$2500.00 per semester (full-time) / \$1250.00 (part-time) plus a \$400 per semester shop fee (full-time) / \$200 per semester (part-time)

Contiguous Counties...\$2900.00 per semester (full-time) / \$1450.00 (part-time) plus a \$400 per semester shop fee (full-time) / \$200 per semester (part-time)

Non-Resident...\$3600.00 per semester (full-time) / \$1800.00 (part-time) plus a \$400 per semester shop fee (full-time) / \$200 per semester (part-time)

**CONTIGUOUS COUNTIES in Oklahoma include:** Nowata, Washington, Ottawa, Craig, Osage and Rogers.

**CONTIGUOUS COUNTIES in Missouri include:** McDonald, Newton, Jasper, Barton and Vernon.

Fees to be determined by Program and are subject to change:

-Allied Health Course Fees

-Emergency Service Education Fees

-Fire Science Fees

- Medical Assistant Fees
- Medical Lab Technology Fees
- Nursing Fees
- Technical Program Shop Fees

For more information regarding these programs or fees, please check with the appropriate Technical Campus Office. (Coffeyville - 620.252.7550 or Columbus - 620.429.3896)

**FEES**

All students are assessed \$46.00 per credit hour for student fees. The money collected is used to assist with technology advancement, student ID cards, parking, student activity travel, student health center operations, building debt payment, building rent for off-campus programs, access to college sporting, musical and theatrical events, in-state scholarship funding, operational costs, and Student Government Association (SGA) activities.

Technical campus students (full-time, part-time & high school) are assessed a program consumables fee ranging from \$100 to \$600 per semester depending upon the program. Certified Nurse’s Assistant (CNA) and Certified Medication Aide (CMA) fees are \$120 each. Home Health Aide (HHA) and CMA Update fees are \$60 each. CNA Update fees are \$20. Short-term evening class students may be assessed a materials fee in addition to regular tuition and fees. Tuition, operational fees, and program consumable fees are subject to change. Safety glasses may be purchased in the Technical Campus offices.

**SPECIAL FEES\***

A limited number of special fees are assessed to students enrolled in computer, lab science and other courses in addition to the regular fees. These include, but are not limited to, the following.

Applied Music Classes	\$30.00 per class
Art Classes	\$65.00 per class
Cap & Gown/Graduation	\$35.00
Computer	\$10.00 per hour
First Aid	\$30.00 per class
Greenhouse	\$40.00 per class
Intro. to Athletic Training	\$30.00 per class
Online Course	\$35.00 per hour
Science Lab	\$5.00 per hour

\* All fees are subject to change.

**PAYMENT OF TUITION, FEES AND RESIDENTIAL HOUSING**

Payment of tuition, fees and residential housing are due before the first day of classes. The enrollment is not finalized until payment is made in full, payment options have been set up, or Financial Aid is confirmed. If Financial Aid does not cover the student account balance, a payment is required. If Financial Aid is not confirmed, a payment is required. The Business Office can accept payments over the phone via credit/debit card or log into Raven ACCESS.

**ACCESS Payment Option:** Payments in full and monthly payments can be made by utilizing the online ACCESS system. Log on to [www.coffeyville.edu](http://www.coffeyville.edu) and select Raven ACCESS. A password and username is required. Please scroll down to the ACCESS Help window for guidance. Once you have logged in, select Business Office, Student Account Balances, My Account Balance and Make a Payment. The amount and payment information will be requested. Please be sure to complete all required fields. You will receive a payment confirmation via email and also a receipt from the CCC Business Office. If you have

any questions regarding your payment or receipt, please contact the Business Office at 620.252.7007 or 620.252.7300.

Students can utilize ACCESS to check the activity of their account balances. This will show transactions (charges and credits) of added and/or dropped classes and financial aid transactions. Any preliminary financial aid awards that are shown on the account as “suspended” are only “estimated” and can change due to federal requirements and eligibility. A student can also check the financial aid disbursement dates from Raven ACCESS.

**TUITION AND FEES REFUND POLICY**

100% of tuition and fees may be refunded for Fall and Spring semesters if courses are dropped within seven days of the published session start date. 100% of tuition and fees may be refunded for Summer I, Summer II and Intercession semesters if courses are dropped within one day of the published start date. A student remains responsible for payment of tuition and fees if the drop occurs after the tuition refund date as indicated.

Online Courses – At the end of the mid-term, students who have not completed 25% of the online course will be dropped. The student remains responsible for payment of tuition and fees if the drop occurs after the refund dates as indicated on the master calendar.

All refunds are processed in the Business Office.

**GOLD CARD**

Residents of Montgomery and Cherokee Counties, age 55 or older, are invited to apply for the CCC Gold Card. This card permits the card holder to enroll in a maximum of six (6) college credit hours per academic year at a reduced rate of \$37.00 per credit hour. A 10 percent discount is available on enrollment in continuing education classes at the Technical Campuses. Payment of all fees and/or books is the responsibility of the student. For information, contact Kim Blaes at 620.252.7115.

**WELLNESS CARD**

Residents of Montgomery County who are age 21 or older are invited to apply for a free Community Wellness Card. The Community Wellness Card allows the holder to take up to three (3) college credit hours per semester of wellness courses tuition free. Payments of any fees and/or books are the responsibility of the student. The Community Wellness Card must be presented at the time of registration. For more information, contact Kim Blaes at 620.252.7115

**STUDENT ID CARD**

Student ID cards are provided to students enrolled in six (6) or more credit hours in a semester. The student ID card admits students to numerous student activities, permits students to check out items in the library, and affords other opportunities limited to currently enrolled students. Students must report to the Student Success Center within the first two weeks of classes with a current copy of their registration form or schedule. To obtain a current picture ID, students must be enrolled in the current semester. Student ID’s will be free of charge for the first 15 days of the semester. After the first 15 days students will be charged \$10.00 for an ID card.

Community and College IDs may also be issued upon request to those who are not full-time students, and at no charge. Proof of a current address and phone number is required. These IDs are used for the library resources and do not provide student activity privileges.

## TESTING & PLACEMENT

In an effort to ensure student success in academic courses, it is mandatory that all students are placed in their first English and math courses based on ACT, SAT or ACCUPLACER test scores. Students who have taken the ACT/SAT should have their test scores sent to Coffeyville Community College or should bring a copy of their scores when enrolling for the first time at CCC. There is no testing fee for a student taking the ACCUPLACER test for the first time at CCC if they do not have ACT/SAT scores. Students who elect to complete the ACCUPLACER test more than once will be charged \$10 per test. Students are required to show a photo ID to the test monitor before taking a placement test. Testing is available in the Student Success Center / Advising Center by appointment.

## ADVISING

The Advising Office is located in the Student Success Center in Weinberg Hall - Graham Library. The office is staffed from 8am - 5pm Monday through Friday during Fall and Spring semesters. Summer hours are 8am - 5pm Monday through Thursday. Trained academic advisors assist with the enrollment process. For information, call 620.252.7135.

## STUDENT SUCCESS CENTER

The Student Success Center (SSC) is located in Weinberg Hall - Graham Library. The SSC promotes academic success with one-on-one tutoring, group and class tutoring, plus access to use equipment to assist with course work. The SSC has several full time and peer tutors on duty throughout the week who specialize in English, Math and Science. The SSC hours are 8:00am - 10:00pm Monday - Thursday and Friday 8:00am - 5:00pm. Summer hours are 8:00am - 7:00pm Monday - Thursday.

## BOOKSTORE

The College Bookstore is located in Weinberg Hall and open from 9:00am – 4:30pm Monday through Friday. It offers an array of official College merchandise, books, and school supplies. A complete list of course textbooks, including ISBN numbers and retail price information, is available on the College website at [www.coffeyville.edu/bookstore](http://www.coffeyville.edu/bookstore). Business hours may vary during peak times and holidays; please call or visit the Bookstore's website to verify hours.  
<http://www.coffeyville.edu/bookstore/>

## EVENING COURSES

Students may enroll in evening courses during regular office hours (M-F 8am - 5pm) or at the first night of class. Early enrollment is encouraged to help ensure student placement in the class of choice.

## GRAHAM LIBRARY

The Graham Library is at the heart of the CCC main campus and includes 18,000 books, 75 current periodicals, Internet workstations, an Internet Cable Cafe (for connection to your laptop) and a staff that is trained to assist in research and service. Online subscriptions to research databases may be accessed from the library web pages on campus at [www.coffeyville.edu](http://www.coffeyville.edu).

Named for Dr. Russell H. Graham, the College's second president, the Graham Library provides students with resources and services to enable successful completion of course work. Students with a valid photo ID may use the Student Success Center and the library. Non-students are also welcome to use the facility by applying for the Community ID card in the library.

The library is open during the following hours:

8:00am – 10pm Monday through Thursday

8:00am – 5pm Friday

\*Summer hours may vary

## INTERNET ACCESS

Coffeyville Community College provides Internet access in the Student Success Center and in the Computer Labs. Students should contact the IT Department to arrange for computer access. CCC also provides numerous wireless access points throughout campus. The areas with Wi-Fi include the cafeteria, library, outside courtyard, as well as the majority of the academic buildings. This service is free to students. Students who experience difficulty connecting may contact the IT Department for assistance. For information on Internet access in the residence halls, please contact the Residence Hall Director.

## ONLINE CLASSES

Coffeyville Community College offers a variety of online classes to meet the needs of the students. Online classes are listed with the traditional classes, as well as, class specific information from each online instructor. Online class information is also posted on the CCC website at [www.coffeyville.edu](http://www.coffeyville.edu) within the "Online Classes" link. Log-in instructions can be obtained by viewing the "Instructional Video" located along the left side of the online class page.

## NOTE

All online courses are required to maintain a "Syllabus Exam" completion date. The student must have the "Syllabus Exam" completed by this date. Failure to complete the "Syllabus Exam" by the set date will result in the student being administratively dropped from the course. The student remains responsible for payment of tuition and fees if the drop occurs after the refund dates as indicated on the master calendar.

## RAVEN ACCESS

Coffeyville Community College offers students the availability to receive and view their records and College information online. Visit [www.coffeyville.edu](http://www.coffeyville.edu) and click on Raven ACCESS. Enter username (Student ID#) and password (Last 4 digits of SSN). NOTE: Change password immediately by clicking on Personal Info to the right of your name, click Password Tab and type in old password and create a new password. Raven ACCESS works on breadcrumbs, so the browser back button will not work. Navigational Tabs available are: Home (General Information, Upcoming Events, Course Schedules, Events Calendar) Disclaimer (Self-Enrollment Waiver), Student Email (Set Up Email, Reset Password, Check Email), Campus Life (Residence Hall Information, Campus Life Staff, On Campus Mail, Announcements, Calendar), Student (Student Announcements, Student Schedule, Links to Advising, Registrar, Business Office, and Financial Aid) and My Pages (Location for Personalized Content).

## CLASSROOM LEGEND

Most classroom locations and faculty offices are identified with letters and a number. For example: A/S212 is Arts & Sciences Building, Room 212 (second floor); WH134 is Weinberg Hall, Room 134.

Additional room locations follow:

A/S	Arts & Sciences Building
A/S 178	Theatre
ADM	Administration Building (Columbus Technical Campus)
AO100	Athletic Office

BKST	Bookstore
COMPL 400	Dick Foster Athletic Complex (Woodland Avenue)
CRMC	Coffeyville Regional Medical Center
CTC	Construction Building
CTN	Columbus Tech North
FKHS	Field Kindley High School
GH 401	Greenhouse Lab
GL	Graham Library
N/E	Nellis Hall East
N/W	Nellis Hall West
ORS	Orscheln Hall - 8th & Beech Street
STU/U	Student Union Classroom
T&I	Trade & Industry Building, (Columbus Technical Campus)
TECH	Coffeyville Technical Campus
TRC	4th Street Training Center (Coffeyville Technical Campus)
WH	Weinberg Hall
WTI	CCC Welding & Technology Institute

### **SPECIAL ACCOMMODATIONS**

Students requesting accommodations or services because of a learning or physical disability should contact the Advising Office at 620.252.7135. The student's request must be supported by the documentation that the student provides. The Accommodations Committee will determine eligibility and appropriate reasonable accommodations or services for academic accommodations in compliance with ADA and the 1973 Rehabilitation Act. TDD (Telecommunications Device for the Deaf) information and services offered by CCC may be accessed by TDD through the Kansas Relay Center. For more information, call 800.766.3777.

### **RELEASE OF INFORMATION**

Each and every student of Coffeyville Community College is hereby notified that the College publishes brochures, catalogs, guide books, news releases, sports information, honor rolls, graduation lists, which contain information that specifically identifies students and information about them. The College is authorized under the Privacy Rights of Parents and Students, Section 438 of the General Education Provisions Act, as amended (P.L. 93 380), also known as the Family Education Rights and Privacy Act of 1974, or the "Buckley Amendment," to publish, and will publish, such directory information, collectively or individually, UNLESS a student within a reasonable time after the start of the semester notifies the Vice President for Academic Services in writing that any or all of the categories listed below (designated Directory Information) should not be released without prior written consent.

### **DIRECTORY INFORMATION**

Student Name  
 Local Address  
 Telephone Listing  
 Parent and Next-of-Kin Information  
 Hometown Address  
 Date and Place of Birth  
 Sex  
 Marital Status  
 Classification  
 Class Schedule  
 Major/Minor Fields of Study  
 Awards Received  
 Participation in Officially Recognized Sports  
 (wt, ht, position, etc.) and/or school activities

### **CRIME AWARENESS**

Coffeyville Community College is committed to assisting all members of the College community in providing for their own safety and security. The annual security compliance document is available on the U.S. Department of Education's Office of Post-secondary Education Website at <http://ope.ed.gov/security>. To receive a booklet called, "Crime Awareness & Campus Security Act of 1990," which contains this information, call 620.252.7046.

### **EMERGENCY NOTIFICATION SYSTEM**

Coffeyville Community College provides an emergency notification system via phone and text messaging. This is a rapid communication service which will deliver voice messages automatically at no charge to students, faculty and staff. Student phone numbers are collected each semester from the enrollment forms. Be sure to list your local phone number in order to be included in this process.

### **CAMPUS TOURS**

Campus tours are scheduled by appointment. Please call 620.252.7100 or 877.51.RAVEN

## **EQUAL OPPORTUNITY STATEMENT AND ASSURANCE OF COMPLIANCE**

Coffeyville Community College is committed to a policy of equal opportunity for all members of the College community. Pursuant to applicable federal and state laws, including Title VI and Title VII of the Civil Rights Act of 1964, the Age Discrimination in Employment Act of 1967 and 1975, Equal Pay Act of 1967, Executive Order 11246, Revised Order 4, Title IX of the Education Amendments of 1972, Sections 503 and 504 of the Rehabilitation Act of 1973, the Vietnam Era Veterans Readjustment Assistance Act of 1974, the Pregnancy Discrimination Act of 1978, The Americans with Disabilities Act of 1990, and the requirements of Title II of the Genetic Information Nondiscrimination Act of 2008, as such laws may be revised or amended, with their respective applicable implementing regulations (collectively, “applicable laws”) and to applicable policies of the Board of Regents provides equal opportunity to employees, students, covered contractors and vendors, and applicants for employment, admission, or contractor or vendor status. The College will act in matters of employment, admissions, programs, services and activities free of prohibited bias with regard to race, color, sex, sexual orientation, national origin, religion, political affiliation, age, marital status, veteran status, ancestry, citizenship status, and status as a disabled veteran or veteran of the Vietnam Era, genetic information and disability.

Equal opportunity for employment, education and educational-related activities shall be extended to all qualified persons. Accordingly, the College will not discriminate in employment, admissions, programs, services, or activities with regard to any position for which the applicant, employee, or student is qualified and will make reasonable accommodation for disabilities. The College provides this certification of equal employment opportunity as a federal fund recipient, contractor, and vendor or supplier to federal contractors and requires like certification from non-exempt vendors, suppliers and sub-contractors.

Programs include, but are not limited to; General Education/Liberal Arts, Allied Health (Certified Nurse Aide, Certified Medication Aide, Home Health Aide), Automotive Service, Collision Repair, Construction, Electrical, Emergency Services Education (EMT/Paramedic), Fire Science, Information Systems, Medical Assisting (Phlebotomy, Medical Coding), Medical Laboratory Technology, Nursing (Licensed Practical Nursing, Registered Nursing), Precision Machining, and Welding. Programs include basic skills instruction, lecture, labs, and clinical/field internship/externship experiences. Coffeyville Community College is an open admission institution; however, the Medical Laboratory Technology, Nursing, and Paramedic programs have required prerequisites and an admission process to be accepted into the program.

The Director of Human Resources, Equal Opportunity Officer/Title IX Officer, will direct the positive efforts of Coffeyville Community College with the support of the Board of Trustees, administration, faculty and staff.

### Contact Information:

Kelli Bauer  
Director of Human Resources/EEO/Title IX Officer  
Coffeyville Community College  
314 West 10th Street  
Coffeyville, KS 67337  
(620) 252-7180

## PARTNERSHIP IN EDUCATION

In 1989, the Kansas Regents institutions and the accredited public community colleges in Kansas agreed to honor a transfer agreement to facilitate the transition of community college students to any of the Regents institutions in the State. The Kansas Regents institutions are Emporia State University, Fort Hays State University, Kansas State University, Pittsburg State University, The University of Kansas, and Wichita State University.

Students can check the transferability of classes from Coffeyville Community College through the CCC website [www.coffeyville.edu](http://www.coffeyville.edu). A community college student who abides by the Transfer Articulation Agreement will automatically be awarded junior status at any of the six Regents institutions in Kansas. For more information on the Transfer Articulation Agreement, please refer to the Coffeyville Community College General Catalog or see your Advisor.

IN ADDITION TO THE Transfer Articulation Agreement with Kansas Regents Institutions, Coffeyville Community College has developed several program specific transfer agreements with many other schools including, but not limited to: Friends University, Wichita, KS; Kansas Newman University, Newton, KS; Kansas State University, Salina, KS; Northeastern State University, Tahlequah, OK; Oklahoma Wesleyan University, Bartlesville, OK; Pittsburg State University, Pittsburg, KS; Rogers State University, Claremore and Bartlesville, OK; Sterling College, Sterling, KS and Washburn University, Topeka, KS.

Coffeyville Community College also works closely with Northeastern Technical, Tri-County Technical and Wes Watkins Technical in Oklahoma to allow students to receive college credit for their technical programs. Students can apply their technical credit to an Associate in Applied Science or an Associate in Arts Degree.

For more information, please see the college website, catalog or talk with an academic advisor.

## Online Degree Seeking Students

Steps for taking Online Courses:

[www.coffeyville.edu/online-courses/steps-to-taking-online-classes](http://www.coffeyville.edu/online-courses/steps-to-taking-online-classes)

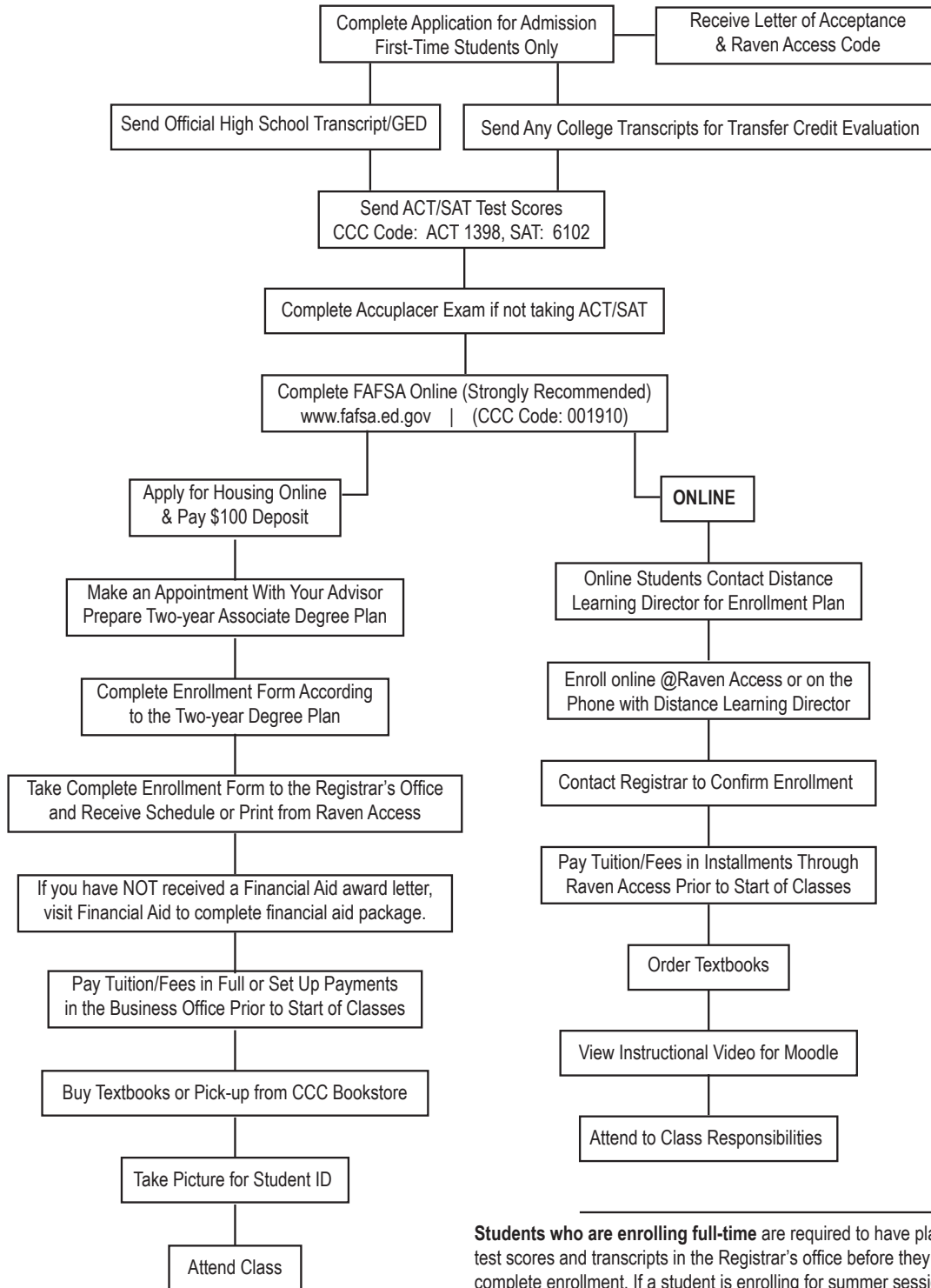
1. Complete admission and enrollment information.
2. Contact the Director of Distance Learning at 620-252-7076 or [weber.brad@coffeyville.edu](mailto:weber.brad@coffeyville.edu)
3. Pay tuition/fees for your course(s). Contact the Business Office at 620-252-7007 OR pay online (See "ACCESS" instructions) from the CCC web site at [www.coffeyville.edu](http://www.coffeyville.edu).
4. If enrollment in online course(s) is completed and payment has been made prior to the start of the semester, you will gain access into your course on the first day of scheduled class. Students who enroll after the start of the semester will need to allow 1-2 business days after enrollment is completed before access to courses through Moodle software will be granted.
5. Order textbooks at, <http://store.ravenbooknook.com/index.html>, by calling 620-252-7555, or by stopping by the CCC Bookstore on the main campus.
6. Login to your course through the Moodle software on the first day of the scheduled course. Online course information is posted on the CCC website at [www.coffeyville.edu](http://www.coffeyville.edu) within the "Online Classes" link. Log-in instructions can be obtained by viewing the "Instructional Video" located along the left side of the online class page.

Online courses require students to be self-motivated to meet assignment deadlines and complete all course requirements. Students are responsible for reporting technical issues to instructors or the Moodle administrator in a timely manner. The College is not responsible for technical issues associated with a student's home computer, software, or internet service.

NOTE:

All online courses are required to maintain a "Syllabus Exam" completion date. The student must have the "Syllabus Exam" completed by this date. Failure to complete the "Syllabus Exam" by the set date will result in the student being administratively dropped from the course. The student remains responsible for payment of tuition and fees if the drop occurs after the refund dates as indicated on the master calendar.

# COFFEYVILLE COMMUNITY COLLEGE ENROLLMENT PROCESS



**Students who are enrolling full-time** are required to have placement test scores and transcripts in the Registrar's office before they are able to complete enrollment. If a student is enrolling for summer session and does not have access to their completed high school transcript a letter from a high school official stating a graduation date may be accepted until the transcript can be sent.



# **COFFEYVILLE COMMUNITY COLLEGE**

**SUMMER I - MAIN CAMPUS**

**6/4/18 - 6/29/18**

# COFFEYVILLE COMMUNITY COLLEGE

## CALENDAR: SUMMER I

### JUNE 4-29, 2018

**ENROLLED STUDENTS WHO HAVE NOT FINALIZED ENROLLMENT  
BY 5:00 P.M. THE DAY PRIOR TO CLASSES STARTING  
WILL BE DROPPED FROM ALL COURSES.**

April 9, 2018	Enrollment for the 2018 Summer / Fall Sessions begins
<b>May 28</b>	<b>MEMORIAL DAY - Offices are closed.</b>
June 2, 9:00am	Residence Halls Open
June 4	Summer I Courses Begin
June 6	Last day to add Summer I Courses with Instructor permission
June 7	Semester Certification Day
June 7	Last day for Summer I Book Refund at Bookstore with Receipt
<b>June 8</b>	<b>COLLEGE OFFICES CLOSED</b>
June 11	Last day for Summer I Book refund at Bookstore with Drop Slip and Receipt
<b>June 15</b>	<b>COLLEGE OFFICES CLOSED</b>
June 21	Final drop day / Last day to drop Summer I classes
<b>June 22</b>	<b>COLLEGE OFFICES CLOSED</b>
June 28-29	Book Buy Back Summer I: Bookstore
June 29	Final Exams - Summer I Classes End
<b>June 29</b>	<b>COLLEGE OFFICES CLOSED</b>
June 30, 3:00pm	Residence Halls Close

# COFFEYVILLE COMMUNITY COLLEGE

## COURSE SCHEDULE

### Summer I

MAIN CAMPUS  
6/4/18 - 6/29/18

#### BIOLOGY

Course No.	Course Title	Cr	Begins	Ends	Days	Room	Instructor
BIOL 101 01	General Biology	5.00	8:00 AM	12:00 PM	MTWRF	A/S 312	R King
	Lab		8:00 AM	12:00 PM	MTWRF	A/S 228	
BIOL 203 01	Anatomy & Physiology	5.00	8:00 AM	12:00 PM	MTWRF	A/S 219	P Oliver
	Lab		8:00 AM	12:00 PM	MTWRF	A/S 226	
BIOL 204 01	Microbiology	5.00	1:00 PM	5:00 PM	MTWRF	A/S 319	D Barker
	Lab		1:00 PM	5:00 PM	MTWRF	A/S 226	

#### BUSINESS

Course No.	Course Title	Cr	Room	Instructor
BUSN 137 OL	Small Business Management	3.00	ONLINE	D Allen

#### COLLEGE PREPARATION STUDIES

Course No.	Course Title	Cr	Begins	Ends	Days	Room	Instructor
<i>Note: Must have ACT or ACCUPLACER scores on file before enrolling in Math and English courses.</i>							
PREP 005 01	Introductory Algebra	3.00	8:00 AM	10:00 AM	MTWRF	A/S 307	R Giesen
PREP 009 01	Written Communications	3.00	8:00 AM	10:00 AM	MTWRF	A/S 171	S Meek
PREP 010 01	Developmental English	3.00	10:10 AM	12:10 PM	MTWRF	A/S 171	S Peyton

#### COMPUTERS

Course No.	Course Title	Cr	Begins	Ends	Days	Room	Instructor
COMP 162 01	Computer Concepts & Applications	3.00	8:00 AM	10:00 AM	MTWRF	A/S 220	D Thornburg
COMP 162 02	Computer Concepts & Applications	3.00	10:10 AM	12:10 PM	MTWRF	A/S 220	D Thornburg

#### ECONOMICS

Course No.	Course Title	Cr	Room	Instructor
ECON 205 OL	Principles of Macroeconomics	3.00	ONLINE	C Nelson

#### ENGLISH

Course No.	Course Title	Cr	Begins	Ends	Days	Room	Instructor
<i>Note: Must have ACT or ACCUPLACER scores on file before enrolling in Math and English courses.</i>							
ENGL 101 01	English Composition I	3.00	8:00 AM	10:00 AM	MTWRF	A/S 317	D Beck

#### GEOGRAPHY

Course No.	Course Title	Cr	Begins	Ends	Days	Room	Instructor
GEOG 120 01	World Geography	3.00	8:00 AM	10:00 AM	MTWRF	A/S 314	C Feerer

# Course has prerequisite - check catalog

% Pre-approval of instructor required to enroll

\$ For Athletic Training majors - see instructor before enrolling

\* Appointment class. Student must contact the instructor on or before the first day of class to receive course materials and instructions.

## HEALTH AND PHYSICAL EDUCATION

Course No.	Course Title	Cr	Begins	Ends	Days	Room	Instructor
HPER 106 02	Weight Training & Body Cond: Football	2.00	1:00 PM	3:00 PM	MTWRF	COMPL	A Flores
HPER 106 01	Weight Training & Body Cond: Men's Basketball	2.00	3:00 PM	5:30 PM	MTWRF	N/W GYM	J Herkelman
HPER 119 01	Football	1.00	3:30 PM	5:00 PM	MTWRF	COMPL	A Flores
HPER 120 01	Basketball	1.00	1:00 PM	2:20 PM	MTWRF	N/W GYM	J Herkelman
HPER 125 01	Volleyball	1.00	3:00 PM	5:30 PM	MTWRF	N/E GYM	D Downing

## HISTORY

Course No.	Course Title	Cr	Begins	Ends	Days	Room	Instructor
HIST 102 01	Early US History	3.00	8:00 AM	10:00 AM	MTWRF	A/S 306	M Manley
HIST 103 01	Recent US History	3.00	10:10 AM	12:10 PM	MTWRF	A/S 306	M Manley

## MATHEMATICS

Course No.	Course Title	Cr	Begins	Ends	Days	Room	Instructor
<i>Note: Must have ACT or ACCUPLACER scores on file before enrolling in Math and English courses.</i>							
MATH 102 01	Intermediate Algebra	3.00	8:00 AM	10:00 AM	MTWRF	A/S 318	R Willis
MATH 105 01	College Algebra	3.00	10:10 AM	12:10 PM	MTWRF	A/S 318	R Willis

## PSYCHOLOGY

Course No.	Course Title	Cr	Room	Instructor
PSYC 101 OL	General Psychology	3.00	ONLINE	M Arpin
PSYC 107 OL	College Orientation II	1.00	ONLINE	M Evensvold

## SOCIOLOGY

Course No.	Course Title	Cr	Begins	Ends	Days	Room	Instructor
SOCI 101 01	Introduction to Sociology	3.00	10:10 AM	12:10 PM	MTWRF	A/S 314	C Feerer

## SPEECH

Course No.	Course Title	Cr	Begins	Ends	Days	Room	Instructor
SPCH 111 01	Public Speaking	3.00	8:00 AM	10:00 AM	MTWRF	A/S 315	D Andrews
SPCH 111 02	Public Speaking	3.00	10:10 AM	12:10 PM	MTWRF	A/S 315	D Andrews

**Courses may be added after the printing of this booklet.  
Please visit with your advisor for a list of additional courses, if applicable,  
or visit our searchable, real-time schedule online at  
[www.coffeyville.edu/student-services/course-schedules](http://www.coffeyville.edu/student-services/course-schedules)**

# Course has prerequisite - check catalog

% Pre-approval of instructor required to enroll

\$ For Athletic Training majors - see instructor before enrolling

\* Appointment class. Student must contact the instructor on or before the first day of class to receive course materials and instructions.

# COFFEYVILLE TECHNICAL CAMPUS

## COURSE SCHEDULE

### Summer I

Start & End dates are indicated by course

#### HEALTH APPLICATIONS

Course No.	Course Title	Cr	Begins	Ends	Days	Room	Instructor
EMTP 115 12	CPR Health Care Provider 6/04/18 - 6/04/18	0.50	1:00 PM	7:30 PM	M	TECH 206	W Simmons
CNAD 105 12	Certified Nurse Aide (CNA) 6/05/18 - 6/28/18	5.00	1:00 PM	7:00 PM	MTWR	TECH 209	B Martin

*This course requires clinical time with a Nursing Home Facility, which will be 7:00am-3:30pm on Saturday 6/16. Students must be at least 16 years of age to enroll in the CNA class  
Students enrolling in CNA must also enroll in a CPR class or provide proof of an active Heartsaver CPR certification.*

#### MEDICAL ASSISTANT

Course No.	Course Title	Cr		Room	Instructor
MEDA 280 01	Medical Assistant Externship I 5/23/18 - 6/30/18	3.00	*appointment	TECH 201	S Newman
MEDA 285 01	Medical Assistant Externship II 5/23/18 - 6/30/18	3.00	*appointment	TECH 201	S Newman

#### INFORMATION SYSTEMS TECHNOLOGY

Course No.	Course Title	Cr		Room	Instructor
NETW 170 OT	Introduction to Linux 5/23/18 - 6/29/18	6.00		ONLINE	S Parker

#### PARAMEDIC/ EMERGENCY SERVICES EDUCATION

##### PARAMEDIC (EMT-P)

A student must be accepted into the Paramedic Program to enroll in Paramedic courses. Please contact Randy McDaniel, EMT/P Program Instructor/Coordinator, to enroll in Paramedic Courses, 620-252-7550, ext 20.

# COLUMBUS TECHNICAL CAMPUS

## COURSE SCHEDULE

### Summer I

Start & End dates are indicated by course

#### HEALTH APPLICATIONS

<b>Course No.</b>	<b>Course Title</b>	<b>Cr</b>	<b>Begins</b>	<b>Ends</b>	<b>Days</b>	<b>Room</b>	<b>Instructor</b>
HHAD 120 OT	Home Health Aide	1.00				ONLINE	P Franklin
	6/18/18 - 6/30/18 - <i>Orientation / Reading Test will be at 3:00 on Monday, June 18th in Girard.</i>						
CONT 230 OT	CMA Recertification	0.50				ONLINE	P Franklin
	6/04/18 - 6/15/18						

# **COFFEYVILLE COMMUNITY COLLEGE**

**SUMMER II  
7/2/18 - 7/27/18**

# COFFEYVILLE COMMUNITY COLLEGE

## CALENDAR: SUMMER II

### July 2 - 27, 2018

**ENROLLED STUDENTS WHO HAVE NOT FINALIZED ENROLLMENT  
BY 5:00 P.M. THE DAY PRIOR TO CLASSES STARTING  
WILL BE DROPPED FROM ALL COURSES.**

April 9, 2018	Enrollment for the 2018 Summer / Fall Sessions begins
July 2	Summer II classes begin
July 3	Last day to add Summer II classes with Instructor permission
<b>July 4-6</b>	<b>COLLEGE OFFICES CLOSED</b>
July 9	Semester Certification Day
July 10	Last day for Summer II Book refund at Bookstore with Drop Slip and Receipt
<b>July 13</b>	<b>COLLEGE OFFICES CLOSED</b>
July 19	Final drop day / Last day to drop Summer II classes
<b>July 20</b>	<b>COLLEGE OFFICES CLOSED</b>
July 27	Final Exams - Summer II Classes End
<b>July 27</b>	<b>COLLEGE OFFICES CLOSED</b>
Aug 6	Fall Session Bookstore Charges Begin
Aug 6-7	Book Buy Back Summer II: Bookstore



# COFFEYVILLE COMMUNITY COLLEGE

## COURSE SCHEDULE

### Summer II

MAIN CAMPUS  
7/2/18 - 7/27/18

#### BIOLOGY

Course No.	Course Title	Cr		Instructor
BIOL 101 OL	General Biology	5.00	ONLINE	P Oliver

#### CHEMISTRY

Course No.	Course Title	Cr		Instructor
CHEM 101 OL	Fundamentals of Chemistry	5.00	ONLINE	A Lumley

#### COMPUTERS

Course No.	Course Title	Cr		Instructor
COMP 161 OL	Computer Information Systems	3.00	ONLINE	D Thornburg

#### COLLEGE PREPARATION STUDIES

Course No.	Course Title	Cr	Begins	Ends	Days	Room	Instructor
PREP 005 OL	Introductory Algebra	3.00				ONLINE	K Payne

*Note: Must have ACT or ACCUPLACER scores on file before enrolling in Math and English courses.*

#### ECONOMICS

Course No.	Course Title	Cr		Instructor
ECON 206 OL	Principles of Microeconomics	3.00	ONLINE	C Nelson

#### ENGLISH

Course No.	Course Title	Cr		Instructor
ENGL 102 OL	English Composition II	3.00	ONLINE	T McCloughan

*Note: Must have ACT or ACCUPLACER scores on file before enrolling in Math and English courses.*

#### FAMILY AND CONSUMER SCIENCE

Course No.	Course Title	Cr		Instructor
FACS 107 OL	Marriage and the Family	3.00	ONLINE	E Cameron
FACS 210 OL	Nutrition	3.00	ONLINE	C Redden

# Course has prerequisite - check catalog

% Pre-approval of instructor required to enroll

\$ For Athletic Training majors - see instructor before enrolling

\* Appointment class. Student must contact the instructor on or before the first day of class to receive course materials and instructions.

## GEOGRAPHY

<u>Course No.</u>	<u>Course Title</u>	<u>Cr</u>		<u>Instructor</u>
GEOG 120 OL	World Geography	3.00	ONLINE	M Manley

## HEALTH AND PHYSICAL EDUCATION

<u>Course No.</u>	<u>Course Title</u>	<u>Cr</u>		<u>Instructor</u>
HPER 111 OL	Lifetime Fitness Concepts	2.00	ONLINE	R Wood

## HISTORY

<u>Course No.</u>	<u>Course Title</u>	<u>Cr</u>		<u>Instructor</u>
HIST 103 OL	Recent US History	3.00	ONLINE	M Manley

## MATHEMATICS

<u>Course No.</u>	<u>Course Title</u>	<u>Cr</u>		<u>Instructor</u>
-------------------	---------------------	-----------	--	-------------------

*Note: Must have ACT or ACCUPLACER scores on file before enrolling in Math and English courses.*

MATH 102 OL	Intermediate Algebra	3.00	ONLINE	S Eytcheson
MATH 105 OL	College Algebra	3.00	ONLINE	S Eytcheson
MATH 250 OL	Elementary Statistics	3.00	ONLINE	K Payne

## PSYCHOLOGY

<u>Course No.</u>	<u>Course Title</u>	<u>Cr</u>		<u>Instructor</u>
PSYC 102 OL	Developmental Psychology	3.00	ONLINE	T Harrel
PSYC 107 OL	College Orientation II	1.00	ONLINE	M Evensvold

## SOCIOLOGY

<u>Course No.</u>	<u>Course Title</u>	<u>Cr</u>		<u>Instructor</u>
SOCI 101 OL	Introduction to Sociology	3.00	ONLINE	C Feerer

## SPEECH

<u>Course No.</u>	<u>Course Title</u>	<u>Cr</u>		<u>Instructor</u>
SPCH 211 OL	Interpersonal & Group Communication	3.00	ONLINE	S Meek

**Courses may be added after the printing of this booklet.  
Please visit with your advisor for a list of additional courses, if applicable,  
or visit our searchable, real-time schedule online at  
[www.coffeyville.edu/student-services/course-schedules](http://www.coffeyville.edu/student-services/course-schedules)**

# COFFEYVILLE TECHNICAL CAMPUS COURSE SCHEDULE

## Summer II

Start & End dates are indicated by course

### HEALTH APPLICATIONS

<u>Course No.</u>	<u>Course Title</u>	<u>Cr</u>	<u>Begins</u>	<u>Ends</u>	<u>Days</u>	<u>Room</u>	<u>Instructor</u>
EMTP 115 12	CPR Health Care Provider 7/2/18 - 7/3/18	0.50	9:00 AM	2:00 PM	MT	TECH 212	N Stephens
CMAD 115 12	Certified Medication Aide 7/09/18 - 7/30/18	4.00	9:00 AM	3:30 PM	MTWR	TECH 212	N Stephens

*This course requires clinical time with a Nursing Home Facility, which will be from 7:00am-3:30pm on Friday 7/20 and Saturday 7/21.*  
*Students enrolling in CMA must also enroll in a CPR class or provide proof of an active Heartsaver CPR certification*

# COLUMBUS TECHNICAL CAMPUS COURSE SCHEDULE

## Summer II

Start & End dates are indicated by course

### HEALTH APPLICATIONS

<u>Course No.</u>	<u>Course Title</u>	<u>Cr</u>	<u>Begins</u>	<u>Ends</u>	<u>Days</u>	<u>Room</u>	<u>Instructor</u>
CNAD 105 11	Certified Nurse Aide 7/02/18 - 8/06/18 - no class on July 4th	5.00	11:00 AM	5:15 PM	MTW	FRONTENAC	P Franklin

**Courses may be added after the printing of this booklet.  
Please visit with your advisor for a list of additional courses, if applicable,  
or visit our searchable, real-time schedule online at  
[www.coffeyville.edu/student-services/course-schedules](http://www.coffeyville.edu/student-services/course-schedules)**

# **COFFEYVILLE COMMUNITY COLLEGE**

**MAIN CAMPUS - FALL  
8/15/18 - 12/6/18**

# COFFEYVILLE COMMUNITY COLLEGE

## CALENDAR: FALL

April 9, 2018	Enrollment for the 2018 Summer / Fall Sessions begins
July 27	Summer II Session Ends
Aug 6	Bookstore Charges Begin
Aug 6-7	Summer II Book Buy Back: Bookstore
Aug 6-Sept 3	Student ID's No Charge (8:00am - 5:00pm M-F in the Student Success Center)
Aug 13	Residence Halls Open

### ENROLLED STUDENTS WHO HAVE NOT FINALIZED ENROLLMENT BY 5:00 P.M. THE DAY PRIOR TO CLASSES STARTING WILL BE DROPPED FROM ALL COURSES.

Aug 15	Fall Courses Begin - All Campuses
Aug 15	1st 8 Week Courses Begin
Aug 22	Last Day for Book Refund with Receipt
Aug 27	Last Day to Add 1st 8 week Online Classes with Instructor Permission
Aug 27	Last Day to Add 1st 8 week Classes with Instructor Permission
Aug 28	Certification Date for 1st 8 Week Courses
Aug 28	Certification Date for 1st 8 Week Online Courses
Aug 29	Last Day for Full Book Refund at the Bookstore with Drop Slip & Receipt
<b>Sept 3</b>	<b>LABOR DAY, COLLEGE CLOSED</b>
Sept 5	\$10 Processing Charge Assessed for All New Student ID's
Sept 11	Last Day to Add 16 Week Courses with Instructor Permission
Sept 12	Certification Date for 16 week courses
Sept 27	Last Day to Drop 1st 8 week Courses
Oct 5	Mid-Term of Semester
Oct 5	1st 8 week courses end
Oct 9	Mid-Term Grades Due
Oct 10	2nd 8 Week Courses Begin
Oct 22	Last Day to Add 2nd 8 week Online Courses with Instructor Permission
Oct 22	Last Day to Add 2nd 8 week Courses with Instructor Permission
Oct 23	Certification Date for 2nd 8 week courses
Oct 23	Certification Date for 2nd 8 week courses online
Nov 2	Last Day to Drop 16 Week Courses
Nov 5	Enrollment for Spring 2019 Session Begins
Nov 20	Last Day to Drop 2nd 8 week Courses
<b>Nov 21-23</b>	<b>THANKSGIVING BREAK - COLLEGE CLOSED</b>
Dec 4-6	Final Exams
Dec 4-6	Book Buy Back at the Bookstore
Dec 8, 3:00pm	Residence Halls Close
Dec 11	Fall Interim Session Begins
Dec 13	Last Day to Add Fall Interim Courses with Instructor Permission
Dec 18	Certification Date for Fall Interim Courses
<b>Dec 20- Jan 2</b>	<b>MAIN CAMPUS CLOSED</b>
Jan 3	Fall Interim Session Ends
Jan 7-9	Fall Interim Book Buy Back: Bookstore

# Course has prerequisite - check catalog

% Pre-approval of instructor required to enroll

\$ For Athletic Training majors - see instructor before enrolling

\* Appointment class. Student must contact the instructor on or before the first day of class to receive course materials and instructions.

# COFFEYVILLE COMMUNITY COLLEGE

## COURSE SCHEDULE

### Fall 2018

#### MAIN CAMPUS - 16 WEEK COURSES

#### 8/15/18 - 12/6/18

### AGRIBUSINESS

Course No.	Course Title	Cr	Begins	Ends	Days	Room	Instructor
AGRI 170 01	Agriculture in Our Society	2.00	11:00 AM	11:50 AM	MWF	WH 128	K Allen
AGRI 173 01	Agricultural Seminar	2.00	1:00 PM	2:50 PM	M	WH 128	K Allen
AGRI 227 01	Agricultural Internship	2.00	1:00 PM	2:50 PM	W	WH 128	K Allen
AGRI 250 01	Intro to Agricultural Communication	3.00	8:00 AM	8:50 AM	MWF	WH 128	K Allen

### ART

Course No.	Course Title	Cr	Begins	Ends	Days	Room	Instructor
ARTS 110 01	Photography I	3.00	11:00 AM	11:50 AM	MWF	ORS 101	M DeRosa
ARTS 147 01	Drawing I	3.00	10:30 AM	11:50 AM	TR	ORS 109	M DeRosa
ARTS 150 01	Ceramics I	3.00	12:00 PM	12:50 PM	MWF	ORS 105	M DeRosa
ARTS 207 01	Sculpture I	3.00	1:30 PM	2:50 PM	TR	ORS 109	M DeRosa
ARTS 250 01	Ceramics II	3.00	12:00 PM	1:20 PM	TR	ORS 105	M DeRosa

### BIOLOGY

Course No.	Course Title	Cr	Begins	Ends	Days	Room	Instructor
BIOL 101 01	General Biology	5.00	8:00 AM	8:50 AM	MWF	A/S 312	R King
	Lab		7:30 AM	8:50 AM	TR	A/S 228	
BIOL 101 02	General Biology	5.00	9:00 AM	9:50 AM	MWF	A/S 312	R King
	Lab		9:00 AM	10:20 AM	TR	A/S 228	
BIOL 101 03	General Biology	5.00	10:00 AM	10:50 AM	MWF	A/S 306	P Oliver
	Lab		10:30 AM	11:50 AM	TR	A/S 228	
BIOL 101 04	General Biology	5.00	11:00 AM	11:50 AM	MWF	A/S 306	P Oliver
	Lab		12:00 PM	1:20 PM	TR	A/S 228	
BIOL 101 05	General Biology	5.00	1:00 PM	2:20 PM	TR	A/S 312	R King
	Lab		2:30 PM	3:50 PM	TR	A/S 228	
BIOL 203 01	Anatomy & Physiology#	5.00	10:00 AM	10:50 AM	MWF	A/S 319	D Barker
	Lab		10:30 AM	11:50 AM	TR	A/S 226	
BIOL 203 02	Anatomy & Physiology#	5.00	1:00 PM	2:20 PM	TR	A/S 319	D Barker
	Lab		2:30 PM	3:50 PM	TR	A/S 226	
BIOL 204 01	Microbiology	5.00	7:30 AM	8:50 AM	TR	A/S 319	D Barker
	Lab		7:30 AM	8:50 AM	MW	A/S 226	
BIOL 204 02	Microbiology	5.00	1:00 PM	2:20 PM	MW	A/S 319	D Barker
	Lab		2:30 PM	3:50 PM	MW	A/S 226	
BIOL 206 02	Biology I:Cellular/Molecular Biol	5.00	8:00 AM	8:50 AM	MWF	A/S 306	P Oliver
	Lab		7:30 AM	8:50 AM	TR	A/S 226	

# Course has prerequisite - check catalog

% Pre-approval of instructor required to enroll

\$ For Athletic Training majors - see instructor before enrolling

\* Appointment class. Student must contact the instructor on or before the first day of class to receive course materials and instructions.

## BUSINESS

Course No.	Course Title	Cr	Begins	Ends	Days	Room	Instructor
BUSN 114 01	Principles of Management	3.00	10:30 AM	11:50 AM	TR	WH 127	D Allen
BUSN 116 02	Fundamentals of Business	3.00	9:00 AM	10:20 AM	TR	WH 127	D Allen
BUSN 116 01	Fundamentals of Business	3.00	10:00 AM	10:50 AM	MWF	WH 127	D Allen
BUSN 137 01	Small Business Management	3.00	11:00 AM	11:50 AM	MWF	WH 127	D Allen
BUSN 171 01	Financial Accounting	3.00	9:00 AM	10:20 AM	TR	WH 132	C Nelson
BUSN 185 01	Introduction to Sports Management	3.00	10:30 AM	11:50 AM	TR	A/S 319	J Richardson
BUSN 220 01	Business Communications	3.00	9:00 AM	9:50 AM	MWF	WH 132	C Nelson
BUSN 250 01	Human Resource Management	3.00	12:00 PM	12:50 PM	MWF	WH 127	D Allen
BUSN 260 01	Business Law I	3.00	11:00 AM	11:50 AM	MWF	WH 132	C Nelson

## CHEMISTRY

Course No.	Course Title	Cr	Begins	Ends	Days	Room	Instructor
CHEM 101 01	Fundamentals of Chemistry Lab	5.00	7:30 AM 7:30 AM	8:50 AM 8:50 AM	TR MW	A/S 219 A/S 201	A Lumley
CHEM 103 01	Principles of Chemistry I Lab	5.00	9:00 AM 9:00 AM	9:50 AM 10:20 AM	MWF TR	A/S 219 A/S 201	A Lumley
CHEM 103 02	Principles of Chemistry I Lab	5.00	10:00 AM 10:30 AM	10:50 AM 11:50 AM	MWF TR	A/S 219 A/S 201	A Lumley

## COLLEGE PREPARATION STUDIES

Course No.	Course Title	Cr	Begins	Ends	Days	Room	Instructor
<i>Note: Must have ACT or ACCUPLACER scores on file before enrolling in Math and English courses.</i>							
PREP 005 02	Introductory Algebra	3.00	10:30 AM	11:50 AM	TR	A/S 306	A Reeves
PREP 005 03	Introductory Algebra	3.00	7:30 AM	8:50 AM	TR	A/S 306	A Reeves
PREP 006 01	College Study Skills	3.00	*appointment			WH 128	K Allen
PREP 009 04	Written Communications	3.00	7:30 AM	8:50 AM	TR	WH 128	S Peyton
PREP 009 05	Written Communications	3.00	10:00 AM	10:50 AM	MWF	A/S 307	Staff
PREP 009 02	Written Communications	3.00	10:30 AM	11:50 AM	TR	A/S 171	S Meek
PREP 009 06	Written Communications	3.00	12:00 PM	12:50 PM	MWF	A/S 171	S Meek
PREP 010 02	Developmental English	3.00	9:00 AM	10:20 AM	TR	WH 128	S Peyton
PREP 010 03	Developmental English	3.00	10:30 AM	11:50 AM	TR	WH 128	S Peyton

## COMPUTERS

Course No.	Course Title	Cr	Begins	Ends	Days	Room	Instructor
COMP 162 03	Computer Concepts & Applications	3.00	8:00 AM	8:50 AM	MWF	WH 103	D Thornburg
COMP 162 06	Computer Concepts & Applications	3.00	10:00 AM	10:50 AM	MWF	WH 103	S Hurlbutt
COMP 162 07	Computer Concepts & Applications	3.00	11:00 AM	11:50 AM	MWF	WH 103	S Hurlbutt
COMP 162 05	Computer Concepts & Applications	3.00	12:00 PM	12:50 PM	MWF	WH 103	S Hurlbutt
COMP 162 02	Computer Concepts & Applications	3.00	12:00 PM	1:20 PM	TR	WH 103	S Hurlbutt
COMP 162 11	Computer Concepts & Applications	3.00	1:00 PM	1:50 PM	MWF	WH 103	S Hurlbutt
COMP 284 01	Web Page Design: HTML/XHTML	3.00	11:00 AM	11:50 AM	MWF	WH 102	D Thornburg
COMP 285 01	Image Manipulation: Adobe Photoshop	3.00	10:30 AM	11:50 AM	TR	WH 102	S Hurlbutt
COMP 296 01	Web Animation: Adobe Flash	3.00	10:00 AM	10:50 AM	MWF	WH 102	D Thornburg

## DIGITAL MEDIA AND COMMUNICATIONS

Course No.	Course Title	Cr	Begins	Ends	Days	Room	Instructor
COMM 121 01	Video Prin for Multi-Media	3.00	12:00 PM	1:20 PM	TR	A/S 314	Z Mitchell
COMM 230 01	Digital Editing	3.00	9:00 AM	10:20 AM	TR	WH 131	Z Mitchell
COMM 235 01	Streaming Media for the Web	3.00	6:00 PM	9:00 PM	W	A/S 171	Z Mitchell

## ECONOMICS

Course No.	Course Title	Cr	Begins	Ends	Days	Room	Instructor
ECON 205 01	Principles of Macroeconomics	3.00	10:00 AM	10:50 AM	MWF	WH 132	C Nelson

## ENGINEERING

Course No.	Course Title	Cr	Begins	Ends	Days	Room	Instructor
ENGR 210 01	Engineering Physics I	5.00	9:00 AM	9:50 AM	MWF	A/S 318	R Willis
	Lab		9:00 AM	10:20 AM	TR	A/S 223	

## ENGLISH

Course No.	Course Title	Cr	Begins	Ends	Days	Room	Instructor
------------	--------------	----	--------	------	------	------	------------

*Note: Must have ACT or ACCUPLACER scores on file before enrolling in Math and English courses.*

ENGL 101 05	English Composition I	3.00	7:30 AM	8:50 AM	TR	A/S 317	D Beck
ENGL 101 01	English Composition I	3.00	8:00 AM	8:50 AM	MWF	A/S 307	Staff
ENGL 101 02	English Composition I	3.00	8:00 AM	8:50 AM	MWF	A/S 220	R Butcher
ENGL 101 06	English Composition I	3.00	9:00 AM	9:50 AM	MWF	A/S 317	D Beck
ENGL 101 11	English Composition I	3.00	10:00 AM	10:50 AM	MWF	A/S 220	R Butcher
ENGL 101 08	English Composition I	3.00	10:30 AM	11:50 AM	TR	A/S 220	R Butcher
ENGL 101 12	English Composition I	3.00	11:00 AM	11:50 AM	MWF	A/S 317	D Beck
ENGL 101 09	English Composition I	3.00	11:00 AM	11:50 AM	MWF	A/S 220	R Butcher
ENGL 101 07	English Composition I	3.00	12:00 PM	1:20 PM	TR	A/S 317	D Beck
ENGL 102 05	English Composition II	3.00	9:00 AM	10:20 AM	TR	A/S 307	Staff
ENGL 102 01	English Composition II	3.00	9:00 AM	10:20 AM	TR	A/S 317	D Beck
ENGL 102 03	English Composition II	3.00	10:00 AM	10:50 AM	MWF	A/S 317	D Beck
ENGL 102 06	English Composition II	3.00	10:30 AM	11:50 AM	TR	A/S 307	Staff

## FAMILY AND CONSUMER SCIENCE

Course No.	Course Title	Cr	Room	Instructor
FACS 107 OL	Marriage and the Family	3.00	ONLINE	E Cameron

## FIRE SCIENCE

Course No.	Course Title	Cr	Begins	Ends	Days	Room	Instructor
FIRE 110 01	Firefighter I 10/08/18 - 12/07/18 <i>This class will meet on four Saturdays (TBD) for hands-on lab work (20 hours) Certification testing will occur on Saturday 12/8/2018</i>	5.00	12:00 PM	2:30 PM	MWF	A/S 318	Price/Cozzo
FIRE 120 01	Hazardous Materials - Awareness 8/15/18 - 8/24/18	1.00	12:00 PM	2:30 PM	MWF	A/S 318	S Price
FIRE 121 01	Hazardous Materials - Operations 8/27/18 - 10/05/18	3.00	12:00 PM	2:30 PM	MWF	A/S 318	S Price
FIRE 140 OL	Introduction to Fire Origin & Cause 8/22/18 - 12/07/18	3.00				ONLINE	J Grimmatt
FIRE 150 OL	Bldng Const Rel to Fire Science 8/22/18 - 12/07/18	3.00				ONLINE	J Rexwinkle
FIRE 230 01	Industrial Firefighting 8/21/18 - 11/27/18	3.00	6:00 PM	9:00 PM	T	WH 127	J Bennett

## FOREIGN LANGUAGE

Course No.	Course Title	Cr	Room	Instructor
FLNG 103 OL	Spanish I	5.00	ONLINE	K Distefano
FLNG 104 OL	Spanish II	5.00	ONLINE	K Distefano



## GEOGRAPHY

Course No.	Course Title	Cr	Begins	Ends	Days	Room	Instructor
GEOG 120 02	World Geography	3.00	8:00 AM	8:50 AM	MWF	WH 107	M Manley

## GOVERNMENT

Course No.	Course Title	Cr	Begins	Ends	Days	Room	Instructor
GOVN 104 01	United States Government	3.00	8:00 AM	8:50 AM	MWF	WH 130	C Feerer
GOVN 104 02	United States Government	3.00	9:00 AM	10:20 AM	TR	WH 130	C Feerer

## HEALTH AND PHYSICAL EDUCATION

Course No.	Course Title	Cr	Begins	Ends	Days	Room	Instructor
HPER 101 01	First Aid	2.00	10:00 AM	10:50 AM	MW	A/S 312	R King
HPER 102 01	Personal Hygiene & Community Health	3.00	9:00 AM	10:20 AM	TR	WH 129	C Perry
HPER 103 01	Intro to Health Physical Ed Rec	3.00	9:00 AM	10:20 AM	TR	A/S 319	R Wood
HPER 106 01	Wght Tr/Bdy Cnd: Rodeo	2.00	3:00 PM	5:00 PM	TR	PARK	J Weil
HPER 106 02	Wght Tr/Bdy Cnd: Track	2.00	3:30 PM	5:30 PM	MTWR	STAD	C Perry
HPER 111 01	Lifetime Fitness Concepts	2.00	8:00 AM	8:50 AM	MW	A/S 178	R Wood
HPER 111 02	Lifetime Fitness Concepts	2.00	8:00 AM	8:50 AM	MW	WH 127	A Carr
HPER 111 03	Lifetime Fitness Concepts	2.00	8:00 AM	8:50 AM	MW	A/S 319	A Walker
HPER 111 04	Lifetime Fitness Concepts	2.00	9:00 AM	9:50 AM	MW	WH 127	A Carr
HPER 111 05	Lifetime Fitness Concepts	2.00	9:00 AM	9:50 AM	MW	WH 129	C Perry
HPER 111 06	Lifetime Fitness Concepts	2.00	9:00 AM	9:50 AM	MW	A/S 319	A Walker
HPER 111 07	Lifetime Fitness Concepts	2.00	9:00 AM	9:50 AM	MW	A/S 307	K Fisher
HPER 111 08	Lifetime Fitness Concepts	2.00	10:00 AM	10:50 AM	MW	A/S 178	R Wood
HPER 111 09	Lifetime Fitness Concepts	2.00	10:00 AM	10:50 AM	MW	WH 129	C Perry
HPER 111 10	Lifetime Fitness Concepts	2.00	11:00 AM	11:50 AM	MW	WH 129	A Carr
HPER 111 11	Lifetime Fitness Concepts	2.00	11:00 AM	11:50 AM	MW	A/S 319	K Fisher
HPER 112 04	Physical Fitness: Cheer	2.00	7:00 AM	8:30 AM	MWF	N/E	J Richardson
HPER 112 05	Physical Fitness: Dance	2.00	12:30 PM	2:30 PM	MWF	N/E	J Wallis
HPER 112 06	Physical Fitness: Powerlifting	2.00	12:30 PM	2:00 PM	MWF	COMPL	M Allen
HPER 112 03	Physical Fit:Women's Basketball	2.00	1:30 PM	3:30 PM	MTWR	N/W	S Harrel
HPER 112 07	Physical Fitness: Softball	2.00	3:00 PM	5:00 PM	MTWR	BYERS	S Blockburger
HPER 112 02	Physical Fitness: Men's Basketball	2.00	3:30 PM	5:30 PM	MTWR	N/W	J Herkelman
HPER 112 01	Physical Fitness: Baseball	2.00	5:00 PM	6:30 PM	MTWR	COMPL	J Martin
HPER 125 01	Volleyball	1.00	3:30 PM	5:30 PM	MTWR	N/E	D Downing
HPER 130 01	Instr & Anal of Team Sports	3.00	10:30 AM	11:50 AM	TR	WH 129	K Fisher
HPER 140 HY	Walking for Fitness	1.00	*			AO	K Bryson
	<i>This class is Hybrid with an online component</i>						
HPER 140 05	Ind. Act: Disc Golf & Foot Golf	1.00	10:30 AM	11:50 AM	TR	AO 100	J Schicke
HPER 140 04	Ind. Act: Native Am. Leadership	1.00	12:00 PM	12:50 PM	M	WH 129	T Harrel
HPER 140 01	Individual Activity: Golf	1.00	1:30 PM	3:30 PM	MTWR	HILCR	A Reeves
HPER 140 02	Individual Activity: Yoga	1.00	5:30 PM	6:20 PM	MW	TECH 200	N Burrows
HPER 150 02	Team Activity: Men's Soccer	1.00	1:00 PM	3:00 PM	MTWR	STAD	J Schicke
HPER 150 03	Team Activity: Women's Soccer	1.00	3:00 PM	5:00 PM	MTWR	STAD	J Schicke
HPER 150 01	Team Activity: Football	1.00	4:40 PM	6:00 PM	MTWR	COMPL	A Flores
HPER 165 01	Introduction to Athletic Training	3.00	10:30 AM	11:50 AM	TR	STU/U	Staff

## SEQUENCED COURSES

Course No.	Course Title	Cr	Begins	Ends	Days	Room	Instructor
HPER 111 01	Lifetime Fitness Concepts	2.00	8:00 AM	8:50 AM	MW	A/S 178	R Wood
PSYC 100 01	College Orientation I	1.00	8:00 AM	8:50 AM	F	A/S 178	R Wood
HPER 111 02	Lifetime Fitness Concepts	2.00	8:00 AM	8:50 AM	MW	WH 127	A Carr
PSYC 100 02	College Orientation I	1.00	8:00 AM	8:50 AM	F	WH 127	A Carr

Course No.	Course Title	Cr	Begins	Ends	Days	Room	Instructor
HPER 111 03	Lifetime Fitness Concepts	2.00	8:00 AM	8:50 AM	MW	A/S 319	A Walker
PSYC 100 03	College Orientation I	1.00	8:00 AM	8:50 AM	F	A/S 319	A Walker
HPER 111 04	Lifetime Fitness Concepts	2.00	9:00 AM	9:50 AM	MW	WH 127	A Carr
PSYC 100 04	College Orientation I	1.00	9:00 AM	9:50 AM	F	WH 127	A Carr
HPER 111 05	Lifetime Fitness Concepts	2.00	9:00 AM	9:50 AM	MW	WH 129	C Perry
PSYC 100 05	College Orientation I	1.00	9:00 AM	9:50 AM	F	WH 129	J Wallis
HPER 111 06	Lifetime Fitness Concepts	2.00	9:00 AM	9:50 AM	MW	A/S 319	A Walker
PSYC 100 06	College Orientation I	1.00	9:00 AM	9:50 AM	F	A/S 319	A Walker
HPER 111 07	Lifetime Fitness Concepts	2.00	9:00 AM	9:50 AM	MW	A/S 307	K Fisher
PSYC 100 07	College Orientation I	1.00	9:00 AM	9:50 AM	F	A/S 307	J Richardson
HPER 111 08	Lifetime Fitness Concepts	2.00	10:00 AM	10:50 AM	MW	A/S 178	R Wood
PSYC 100 08	College Orientation I	1.00	10:00 AM	10:50 AM	F	A/S 178	J Richardson
HPER 111 09	Lifetime Fitness Concepts	2.00	10:00 AM	10:50 AM	MW	WH 129	C Perry
PSYC 100 09	College Orientation I	1.00	10:00 AM	10:50 AM	F	WH 129	J Wallis
HPER 111 10	Lifetime Fitness Concepts	2.00	11:00 AM	11:50 AM	MW	WH 129	A Carr
PSYC 100 10	College Orientation I	1.00	11:00 AM	11:50 AM	F	WH 129	A Carr
HPER 111 11	Lifetime Fitness Concepts	2.00	11:00 AM	11:50 AM	MW	A/S 319	K Fisher
PSYC 100 11	College Orientation I	1.00	11:00 AM	11:50 AM	F	A/S 319	J Richardson

## HISTORY

Course No.	Course Title	Cr	Begins	Ends	Days	Room	Instructor
HIST 102 02	Early US History	3.00	9:00 AM	10:20 AM	TR	WH 107	M Manley
HIST 102 03	Early US History	3.00	10:00 AM	10:50 AM	MWF	WH 107	M Manley
HIST 102 01	Early US History	3.00	12:00 PM	1:20 PM	TR	WH 107	M Manley
HIST 103 02	Recent US History	3.00	9:00 AM	9:50 AM	MWF	WH 107	M Manley
HIST 103 01	Recent US History	3.00	11:00 AM	11:50 AM	MWF	WH 107	M Manley

## HUMANITIES

Course No.	Course Title	Cr	Begins	Ends	Days	Room	Instructor
HUMN 125 01	Humanities I	1.00	10:30 AM	11:50 AM	TR	A/S 178	R Mahannah
HUMN 130 01	History & Develop of Motion Picture	3.00	6:30 PM	9:30 PM	W	WH 127	D Andrews
HUMN 153 01	Comparative Humanities:Honors	3.00	1:00 PM	4:50 PM	W	WH 132	T Harrel
HUMN 156 01	Honors Forum I	1.00	1:00 PM	1:50 PM	M	WH 132	T Harrel
HUMN 208 01	World Religions	3.00	9:00 AM	10:20 AM	TR	WH 134	M Arpin
HUMN 225 01	Humanities III	3.00	10:30 AM	11:50 AM	TR	A/S 178	D Andrews

## MATHEMATICS

Course No.	Course Title	Cr	Begins	Ends	Days	Room	Instructor
<i>Note: Must have ACT or ACCUPLACER scores on file before enrolling in Math and English courses.</i>							
MATH 102 07	Intermediate Algebra	3.00	7:30 AM	8:50 AM	TR	A/S 304	R Willis
MATH 102 06	Intermediate Algebra	3.00	8:00 AM	8:50 AM	MWF	A/S 304	R Willis
MATH 102 02	Intermediate Algebra	3.00	10:00 AM	10:50 AM	MWF	A/S 310	K Payne
MATH 102 08	Intermediate Algebra	3.00	10:30 AM	11:50 AM	TR	A/S 304	R Willis
MATH 102 05	Intermediate Algebra	3.00	11:00 AM	11:50 AM	MWF	A/S 311	S Eytcheson
MATH 102 09	Intermediate Algebra	3.00	11:00 AM	11:50 AM	MWF	A/S 304	R Willis
MATH 102 03	Intermediate Algebra	3.00	1:30 PM	2:50 PM	TR	A/S 310	K Payne
MATH 104 01	College Algebra with Review	5.00	9:00 AM	9:50 AM	MTWRF	A/S 311	S Eytcheson
MATH 105 01	College Algebra	3.00	8:00 AM	8:50 AM	MWF	A/S 310	K Payne
MATH 105 05	College Algebra	3.00	10:00 AM	10:50 AM	MWF	A/S 304	R Willis
MATH 105 03	College Algebra	3.00	10:00 AM	10:50 AM	MWF	A/S 311	S Eytcheson
MATH 105 02	College Algebra	3.00	10:30 AM	11:50 AM	TR	A/S 310	K Payne
MATH 115 01	Calculus with Analytic Geometry I	5.00	8:00 AM	8:50 AM	MTWRF	A/S 311	S Eytcheson
MATH 201 01	Calculus with Analytic Geometry III	3.00	11:00 AM	11:50 AM	MWF	A/S 310	K Payne

## MUSIC

Course No.	Course Title	Cr	Begins	Ends	Days	Room	Instructor
MUSC 102 01	Jazz Ensemble I	1.00	3:00 PM	4:15 PM	TR	N/E 106	M Christensen
MUSC 111 01	Concert Choir	1.00	11:00 AM	11:50 AM	MWF	N/E 100	M Porter
MUSC 113 01	Drum Ensemble I	1.00	2:00 PM	2:50 PM	TR	N/E 106	M Christensen
MUSC 117 03	Applied Music: Instrumental I%	1.00	*			N/E 106	M Christensen
MUSC 117 05	Applied Music: Piano I%	1.00	*			N/E 103	K Reedy
MUSC 117 16	Applied Music: Piano II%	1.00	*			N/E 103	K. Reedy
MUSC 120 01	Vocal Ensemble%	1.00	9:00 AM	10:20 AM	TR	N/E 100	M Porter
MUSC 126 01	Arena Marching Ensemble I	3.00	2:00 PM	3:15 PM	MWF	N/E 106	M Christensen
MUSC 133 01	Arena Marching Ensemble II	2.00	2:00 PM	3:15 PM	MWF	N/E 106	M Christensen
MUSC 202 01	Jazz Ensemble III	1.00	3:00 PM	4:15 PM	TR	N/E 106	M Christensen
MUSC 211 01	Concert Choir II	1.00	11:00 AM	11:50 AM	MWF	N/E 100	M Porter

## PHYSICS

Course No.	Course Title	Cr	Begins	Ends	Days	Room	Instructor
PHYS 203 01	College Physics I Lab	5.00	9:00 AM 9:00 AM	9:50 AM 10:20 AM	MWF TR	A/S 318 A/S 223	R Willis
PHYS 205 01	Physical Science Lab	5.00	1:00 PM 1:00 PM	2:20 PM 2:20 PM	MW TR	A/S 219 A/S 201	A Lumley

## PSYCHOLOGY

Course No.	Course Title	Cr	Begins	Ends	Days	Room	Instructor
PSYC 100 OL	College Orientation I	1.00				ONLINE	J Wallis
PSYC 100 01	College Orientation I	1.00	8:00 AM	8:50 AM	F	A/S 178	R Wood
PSYC 100 02	College Orientation I	1.00	8:00 AM	8:50 AM	F	WH 127	A Carr
PSYC 100 03	College Orientation I	1.00	8:00 AM	8:50 AM	F	A/S 319	A Walker
PSYC 100 04	College Orientation I	1.00	9:00 AM	9:50 AM	F	WH 127	A Carr
PSYC 100 05	College Orientation I	1.00	9:00 AM	9:50 AM	F	WH 129	J Wallis
PSYC 100 06	College Orientation I	1.00	9:00 AM	9:50 AM	F	A/S 319	A Walker
PSYC 100 07	College Orientation I	1.00	9:00 AM	9:50 AM	F	A/S 307	J Richardson
PSYC 100 08	College Orientation I	1.00	10:00 AM	10:50 AM	F	A/S 178	J Richardson
PSYC 100 09	College Orientation I	1.00	10:00 AM	10:50 AM	F	WH 129	J Wallis
PSYC 100 10	College Orientation I	1.00	11:00 AM	11:50 AM	F	WH 129	A Carr
PSYC 100 11	College Orientation I	1.00	11:00 AM	11:50 AM	F	A/S 319	J Richardson
PSYC 101 02	General Psychology	3.00	8:00 AM	8:50 AM	MWF	WH 134	M Arpin
PSYC 101 01	General Psychology	3.00	9:00 AM	9:50 AM	MWF	WH 134	M Arpin
PSYC 101 04	General Psychology	3.00	11:00 AM	11:50 AM	MWF	WH 134	M Arpin
PSYC 102 01	Developmental Psychology	3.00	10:30 AM	11:50 AM	TR	WH 134	M Arpin
PSYC 107 OL	College Orientation II	1.00				ONLINE	M Evensvold
PSYC 125 01	Human Sexuality	3.00	10:00 AM	10:50 AM	MWF	WH 134	M Arpin

## SEQUENCED COURSES

Course No.	Course Title	Cr	Begins	Ends	Days	Room	Instructor
HPER 111 01	Lifetime Fitness Concepts	2.00	8:00 AM	8:50 AM	MW	A/S 178	R Wood
PSYC 100 01	College Orientation I	1.00	8:00 AM	8:50 AM	F	A/S 178	R Wood
HPER 111 02	Lifetime Fitness Concepts	2.00	8:00 AM	8:50 AM	MW	WH 127	A Carr
PSYC 100 02	College Orientation I	1.00	8:00 AM	8:50 AM	F	WH 127	A Carr
HPER 111 03	Lifetime Fitness Concepts	2.00	8:00 AM	8:50 AM	MW	A/S 319	A Walker
PSYC 100 03	College Orientation I	1.00	8:00 AM	8:50 AM	F	A/S 319	A Walker
HPER 111 04	Lifetime Fitness Concepts	2.00	9:00 AM	9:50 AM	MW	WH 127	A Carr
PSYC 100 04	College Orientation I	1.00	9:00 AM	9:50 AM	F	WH 127	A Carr
HPER 111 05	Lifetime Fitness Concepts	2.00	9:00 AM	9:50 AM	MW	WH 129	C Perry
PSYC 100 05	College Orientation I	1.00	9:00 AM	9:50 AM	F	WH 129	J Wallis

Course No.	Course Title	Cr	Begins	Ends	Days	Room	Instructor
HPER 111 06	Lifetime Fitness Concepts	2.00	9:00 AM	9:50 AM	MW	A/S 319	A Walker
PSYC 100 06	College Orientation I	1.00	9:00 AM	9:50 AM	F	A/S 319	A Walker
HPER 111 07	Lifetime Fitness Concepts	2.00	9:00 AM	9:50 AM	MW	A/S 307	K Fisher
PSYC 100 07	College Orientation I	1.00	9:00 AM	9:50 AM	F	A/S 307	J Richardson
HPER 111 08	Lifetime Fitness Concepts	2.00	10:00 AM	10:50 AM	MW	A/S 178	R Wood
PSYC 100 08	College Orientation I	1.00	10:00 AM	10:50 AM	F	A/S 178	J Richardson
HPER 111 09	Lifetime Fitness Concepts	2.00	10:00 AM	10:50 AM	MW	WH 129	C Perry
PSYC 100 09	College Orientation I	1.00	10:00 AM	10:50 AM	F	WH 129	J Wallis
HPER 111 10	Lifetime Fitness Concepts	2.00	11:00 AM	11:50 AM	MW	WH 129	A Carr
PSYC 100 10	College Orientation I	1.00	11:00 AM	11:50 AM	F	WH 129	A Carr
HPER 111 11	Lifetime Fitness Concepts	2.00	11:00 AM	11:50 AM	MW	A/S 319	K Fisher
PSYC 100 11	College Orientation I	1.00	11:00 AM	11:50 AM	F	A/S 319	J Richardson

## SOCIOLOGY

Course No.	Course Title	Cr	Begins	Ends	Days	Room	Instructor
SOCI 101 01	Introduction to Sociology	3.00	7:30 AM	8:50 AM	TR	WH 130	C Feerer
SOCI 101 02	Introduction to Sociology	3.00	9:00 AM	9:50 AM	MWF	WH 130	C Feerer
SOCI 101 03	Introduction to Sociology	3.00	10:30 AM	11:50 AM	TR	WH 130	C Feerer
SOCI 101 04	Introduction to Sociology	3.00	11:00 AM	11:50 AM	MWF	WH 130	C Feerer
SOCI 201 01	American Social Problems	3.00	10:00 AM	10:50 AM	MWF	WH 130	C Feerer

## SPEECH

Course No.	Course Title	Cr	Begins	Ends	Days	Room	Instructor
SPCH 111 08	Public Speaking	3.00	7:30 AM	8:50 AM	TR	A/S 315	D Andrews
SPCH 111 03	Public Speaking	3.00	8:00 AM	8:50 AM	MWF	A/S 315	D Andrews
SPCH 111 04	Public Speaking	3.00	10:00 AM	10:50 AM	MWF	A/S 314	S Meek
SPCH 111 05	Public Speaking	3.00	11:00 AM	11:50 AM	MWF	A/S 314	S Meek
SPCH 111 06	Public Speaking	3.00	12:00 PM	12:50 PM	MWF	A/S 315	D Andrews
SPCH 111 07	Public Speaking	3.00	1:00 PM	1:50 PM	MWF	A/S 315	D Andrews

## THEATRE

Course No.	Course Title	Cr	Begins	Ends	Days	Room	Instructor
THTR 160 01	Theatre Appreciation	3.00	9:00 AM	9:50 AM	MWF	A/S 178	R Mahannah
THTR 163 01	Theatre Production I	1.00	1:00 PM	1:50 PM	F	A/S 178	R Mahannah
THTR 164 01	Fundamentals of Acting I	3.00	12:00 AM	12:50 AM	MWF	A/S 178	R Mahannah
THTR 172 01	Theatre Production III	1.00	1:00 PM	1:50 PM	F	A/S 178	R Mahannah

**Courses may be added after the printing of this booklet.  
Please visit with your advisor for a list of additional courses, if applicable,  
or visit our searchable, real-time schedule online at  
[www.coffeyville.edu/student-services/course-schedules](http://www.coffeyville.edu/student-services/course-schedules)**

# Course has prerequisite - check catalog

% Pre-approval of instructor required to enroll

\$ For Athletic Training majors - see instructor before enrolling

\* Appointment class. Student must contact the instructor on or before the first day of class to receive course materials and instructions.

# COFFEYVILLE COMMUNITY COLLEGE

## COURSE SCHEDULE

Fall 2018

MAIN CAMPUS - 1st 8 WEEK COURSES

8/15/18 - 10/5/18

*The following courses meet daily*

### 9:00am

Course No.	Course Title	Cr	Begins	Ends	Days	Room	Instructor
ARTS 140 01	Art History & Appreciation I	3.00	9:00 AM	9:50 AM	MWF	A/S 304	M DeRosa
			9:00 AM	10:20 AM	TR		
COMP 162 04	Computer Concepts & Applications	3.00	9:00 AM	9:50 AM	MWF	WH 103	D Thornburg
			9:00 AM	10:20 AM	TR		
PREP 003 01	Elements of Mathematics	3.00	9:00 AM	9:50 AM	MWF	A/S 306	J Weil
			9:00 AM	10:20 AM	TR		
PREP 005 01	Introductory Algebra	3.00	9:00 AM	9:50 AM	MWF	A/S 310	K Payne
			9:00 AM	10:20 AM	TR		
PREP 009 03	Written Communications	3.00	9:00 AM	9:50 AM	MWF	A/S 220	R Butcher
			9:00 AM	10:20 AM	TR		
PREP 010 01	Developmental English	3.00	9:00 AM	9:50 AM	MWF	A/S 171	S Meek
			9:00 AM	10:20 AM	TR		
SPCH 111 01	Public Speaking	3.00	9:00 AM	9:50 AM	MWF	A/S 315	D Andrews
			9:00 AM	10:20 AM	TR		

### 12:00pm

Course No.	Course Title	Cr	Begins	Ends	Days	Room	Instructor
ENGL 101 04	English Composition I	3.00	12:00 PM	12:50 PM	MWF	A/S 307	Staff
			12:00 PM	1:20 PM	TR		

### 1:00pm

Course No.	Course Title	Cr	Begins	Ends	Days	Room	Instructor
MATH 102 04	Intermediate Algebra	3.00	1:00 PM	1:50 PM	MWF	A/S 311	S Eytcheson
			1:00 PM	2:20 PM	TR		

*Note: Must have ACT or ACCUPLACER scores on file before enrolling in Math and English courses.*

**Courses may be added after the printing of this booklet.  
Please visit with your advisor for a list of additional courses, if applicable,  
or visit our searchable, real-time schedule online at  
[www.coffeyville.edu/student-services/course-schedules](http://www.coffeyville.edu/student-services/course-schedules)**

# ONLINE SCHEDULE

CCC provides general education transfer and career preparation courses via the Internet to allow students flexibility in completing their degree online. Students will gain access into their online classes beginning the first scheduled day of a class. For more information contact Brad Weber, Director of Distance Learning at 620-252-7076 or [weber.brad@coffeyville.edu](mailto:weber.brad@coffeyville.edu).

## Fall 2018

### 1st 8 WEEK COURSES

8/15/18 - 10/5/18

### ONLINE COURSE OFFERINGS

<u>Course No.</u>	<u>Course Title</u>	<u>Cr</u>		<u>Instructor</u>
BIOL 103 OL	Environmental Science	5.00	ONLINE	P Oliver
BUSN 116 OL	Fundamentals of Business	3.00	ONLINE	D Allen
CHEM 101 OL	Fundamentals of Chemistry	5.00	ONLINE	A Lumley
COMP 161 OL	Computer Information Systems	3.00	ONLINE	D Thornburg
ENGL 101 OL	English Composition I	3.00	ONLINE	T McCloughan
FACS 210 OL	Nutrition	3.00	ONLINE	C Redden
GEOG 120 OL	World Geography	3.00	ONLINE	M Manley
HIST 102 OL	Early US History	3.00	ONLINE	J Armitage
PSYC 101 OL	General Psychology	3.00	ONLINE	M Arpin

*Note: Must have ACT or ACCUPLACER scores on file before enrolling in Math and English courses.*

**Courses may be added after the printing of this booklet.  
Please visit with your advisor for a list of additional courses, if applicable,  
or visit our searchable, real-time schedule online at  
[www.coffeyville.edu/student-services/course-schedules](http://www.coffeyville.edu/student-services/course-schedules)**

# COFFEYVILLE COMMUNITY COLLEGE

## COURSE SCHEDULE

**Fall 2018**

**MAIN CAMPUS - 2nd 8 WEEK COURSES**

**10/10/18 - 12/6/18**

*The following courses meet daily*

### 9:00am

<u>Course No.</u>	<u>Course Title</u>	<u>Cr</u>	<u>Begins</u>	<u>Ends</u>	<u>Days</u>	<u>Room</u>	<u>Instructor</u>
ARTS 142 01	Introduction to Design I	3.00	9:00 AM	9:50 AM	MWF	ORS 109	M DeRosa
			9:00 AM	10:20 AM	TR		
COMP 162 09	Computer Concepts & Applications	3.00	9:00 AM	9:50 AM	MWF	WH 103	D Thornburg
			9:00 AM	10:20 AM	TR		
ENGL 101 03	English Composition I	3.00	9:00 AM	9:50 AM	MWF	A/S 220	R Butcher
			9:00 AM	10:20 AM	TR		
MATH 102 01	Intermediate Algebra	3.00	9:00 AM	9:50 AM	MWF	A/S 310	K Payne
			9:00 AM	10:20 AM	TR		
PREP 005 05	Introductory Algebra	3.00	9:00 AM	9:50 AM	MWF	A/S 306	J Weil
			9:00 AM	10:20 AM	TR		
PREP 009 01	Written Communications	3.00	9:00 AM	9:50 AM	MWF	A/S 171	S Meek
			9:00 AM	10:20 AM	TR		
SPCH 111 02	Public Speaking	3.00	9:00 AM	9:50 AM	MWF	A/S 315	D Andrews
			9:00 AM	10:20 AM	TR		

### 11:00am

<u>Course No.</u>	<u>Course Title</u>	<u>Cr</u>	<u>Begins</u>	<u>Ends</u>	<u>Days</u>	<u>Room</u>	<u>Instructor</u>
HPER 101 02	First Aid	2.00	11:00 AM	11:50 AM	MTWR	A/S 312	R King

### 12:00pm

<u>Course No.</u>	<u>Course Title</u>	<u>Cr</u>	<u>Begins</u>	<u>Ends</u>	<u>Days</u>	<u>Room</u>	<u>Instructor</u>
ENGL 102 04	English Composition II	3.00	12:00 PM	12:50 PM	MWF	A/S 307	Staff
			12:00 PM	1:20 PM	TR		

### 1:00pm

<u>Course No.</u>	<u>Course Title</u>	<u>Cr</u>	<u>Begins</u>	<u>Ends</u>	<u>Days</u>	<u>Room</u>	<u>Instructor</u>
MATH 105 04	College Algebra	3.00	1:00 PM	1:50 PM	MWF	A/S 311	S Eytcheson
			1:00 PM	2:20 PM	TR		

*Note: Must have ACT or ACCUPLACER scores on file before enrolling in Math and English courses.*

# ONLINE SCHEDULE

CCC provides general education transfer and career preparation courses via the Internet to allow students flexibility in completing their degree online. Students will gain access into their online classes beginning the first scheduled day of a class. For more information contact Brad Weber, Director of Distance Learning at 620-252-7076 or [weber.brad@coffeyville.edu](mailto:weber.brad@coffeyville.edu).

## Fall 2018

### 2nd 8 WEEK COURSES

10/10/18 - 12/6/18

### ONLINE COURSE OFFERINGS

<u>Course No.</u>	<u>Course Title</u>	<u>Cr</u>		<u>Instructor</u>
BUSN 133 OL	Business Math	3.00	ONLINE	C Nelson
BUSN 201 OL	Psychology of Business	3.00	ONLINE	D Allen
COMP 162 OL	Computer Concepts & Applications	3.00	ONLINE	D Thornburg
ENGL 102 OL	English Composition II	3.00	ONLINE	T McCloughan
GOVN 104 OL	United States Government	3.00	ONLINE	J Armitage
HPER 111 OL	Lifetime Fitness Concepts	2.00	ONLINE	A Walker
HPER 270 OL	Bas Prev & Care of Athlhc Injuries	3.00	ONLINE	E Macaronas
MATH 105 OL	College Algebra	3.00	ONLINE	S Eytcheson
MUSC 122 OL	Music Appreciation	3.00	ONLINE	M Christensen
PREP 005 OL	Introductory Algebra	3.00	ONLINE	J Weil
PREP 009 OL	Written Communications	3.00	ONLINE	L Cummings
PSYC 102 OL	Developmental Psychology	3.00	ONLINE	T Harrel
SPCH 211 OL	Interpersonal & Group Communication	3.00	ONLINE	S Meek

*Note: Must have ACT or ACCUPLACER scores on file before enrolling in Math and English courses.*

**Courses may be added after the printing of this booklet.  
Please visit with your advisor for a list of additional courses, if applicable,  
or visit our searchable, real-time schedule online at  
[www.coffeyville.edu/student-services/course-schedules](http://www.coffeyville.edu/student-services/course-schedules)**



# FINAL EXAM SCHEDULE FALL 2018

<u>Regular Class Time</u>	<u>Final Exam Date &amp; Time</u>
8:00 AM: MWF, MW, MTWR, MTWRF	8:00-9:40 Wednesday, 12/5
9:00 AM: MWF, MW, MTWR, MTWRF	10:00-11:40 Thursday, 12/6
10:00 AM: MWF, MW, MTWR, MTWRF	10:00-11:40 Tuesday, 12/4
11:00 AM: MWF, MW, MTWR, MTWRF	12:00-1:40 Wednesday, 12/5
12:00 PM: MWF, MW, MTWR, MTWRF	12:00-1:40 Thursday, 12/6
1:00 PM: MWF, MW, MTWR, MTWRF	2:00-3:40 Tuesday, 12/4
2:00 PM: MWF, MW, MTWR, MTWRF	2:00-3:40 Wednesday, 12/5
3:00 PM: MWF, MW, MTWR, MTWRF	4:00-5:40 Thursday, 12/6
7:30 AM: TR	8:00-9:40 Thursday, 12/6
9:00 AM: TR	8:00-9:40 Tuesday, 12/4
10:30 AM: TR	10:00-11:40 Wednesday, 12/5
12:00 PM: TR	2:00-3:40 Thursday, 12/6
1:30 PM: TR	12:00-1:40 Tuesday, 12/4
3:00 PM: TR	4:00-5:40 Wednesday, 12/5

**FINALS FOR EVENING CLASSES AND ONE CREDIT HOUR COURSES ARE ON THE  
LAST SCHEDULED DAY OF CLASS.  
ALL OTHER CLASSES WILL SCHEDULE FINAL EXAMS BY ARRANGEMENT.**

# **COFFEYVILLE COMMUNITY COLLEGE**

**MAIN CAMPUS - FALL INTERIM  
12/11/18 - 1/3/19**

# COFFEYVILLE COMMUNITY COLLEGE

## CALENDAR: FALL INTERIM

### December 11, 2018 - January 3, 2019

**ENROLLED STUDENTS WHO HAVE NOT FINALIZED ENROLLMENT  
BY 5:00 P.M. THE DAY PRIOR TO CLASSES STARTING  
WILL BE DROPPED FROM ALL COURSES.**

Dec 11	Fall Interim Session Begins
Dec 13	Last Day to Add Fall Interim Courses
Dec 18	Certification Date for Fall Interim Courses
<b>Dec 20- Jan 2</b>	<b>MAIN CAMPUS CLOSED</b>
Jan 3	Fall Interim Session Ends
Jan 7-9	Fall Interim Book Buy Back: Bookstore

# COFFEYVILLE COMMUNITY COLLEGE

## ONLINE SCHEDULE

CCC provides general education transfer and career preparation courses via the Internet to allow students flexibility in completing their degree online. Students will gain access into their online classes beginning the first scheduled day of a class. For more information contact Brad Weber, Director of Distance Learning at 620-252-7076 or [weber.brad@coffeyville.edu](mailto:weber.brad@coffeyville.edu).

### INTERIM COURSES

12/11/18 - 1/3/19

#### ONLINE COURSE OFFERINGS

<u>Course No.</u>	<u>Course Title</u>	<u>Cr</u>		<u>Instructor</u>
BUSN 175 IO	Introduction to Leadership	3.00	ONLINE	D Allen
COMP 161 IO	Computer Information Systems	3.00	ONLINE	D Thornburg
FACS 210 IO	Nutrition	3.00	ONLINE	C Redden
GEOG 120 IO	World Geography	3.00	ONLINE	M Manley
HPER 140 IO	Walking for Fitness	1.00	ONLINE	C Perry

**Courses may be added after the printing of this booklet.  
Please visit with your advisor for a list of additional courses, if applicable,  
or visit our searchable, real-time schedule online at  
[www.coffeyville.edu/student-services/course-schedules](http://www.coffeyville.edu/student-services/course-schedules)**

# **COFFEYVILLE COMMUNITY COLLEGE**

**MAIN CAMPUS - SPRING**

**1/9/19 - 5/10/19**

# COFFEYVILLE COMMUNITY COLLEGE

## CALENDAR: SPRING

Nov 5	Enrollment for the 2019 Spring Session begins
Dec 4-6	Fall 2018 Finals
Dec 11 - Jan 3	Fall 2018 Interim Session
<b>Dec 20 - Jan 2</b>	<b>MAIN CAMPUS CLOSED</b>
Jan 3	Fall Interim Session Ends
Jan 3	College Opens for Spring Semester
Jan 3	Bookstore Opens, Charges Begin
Jan 4-25	Student ID's, No Charge (8:00am - 5:00pm M-F in the Student Success Center)
Jan 7, 9:00am	Residence Halls Reopen
Jan 7-9	Book Buyback for the Interim Session at the Bookstore

**ENROLLED STUDENTS WHO HAVE NOT FINALIZED ENROLLMENT  
BY 5:00 P.M. THE DAY PRIOR TO CLASSES STARTING  
WILL BE DROPPED FROM ALL COURSES.**

Jan 9	Spring Courses Begin - All Campuses
Jan 9	1st 8 Week Courses Begin
Jan 16	Last Day for Book Refund with Receipt
<b>Jan 21</b>	<b>MARTIN LUTHER KING DAY - COLLEGE CLOSED</b>
Jan 22	Last Day to Add 1st 8 Week Online Courses with Instructor Permission
Jan 22	Last Day to Add 1st 8 Week Course with Instructor Permission
Jan 23	Certification Date for 1st 8 Week Courses
Jan 23	Certification Date for 1st 8 Week Online Courses
Jan 23	Last Day for Full Book Refund at the Bookstore with Drop Slip & Receipt
Jan 29	\$10.00 Processing Charge Assessed for All New Student IDs
Feb 5	Last Day to Add 16 Week Courses with Instructor Permission
Feb 6	Certification Day for 16 Week Courses
Feb 21	Last Day to Drop 1st 8 Week Courses
March 1	Mid-Term of Semester
March 5	Mid-Term Grades Due
March 5	1st 8 Week Courses End
March 7	Cap & Gown Measurements
March 8	2nd 8 Week Courses Begin
March 9	Residence Halls close for Spring Break
<b>March 11-15</b>	<b>SPRING BREAK - COLLEGE CLOSED</b>
March 17	Residence Halls Reopen
March 27	Last Day to Add 2nd 8 Week Online Courses with Instructor Permission
March 27	Last Day to Add 2nd 8 Week Courses with Instructor Permission
March 28	Certification Date for 2nd 8 Week Courses
March 28	Certification Date for 2nd 8 Week Online Courses
April 5	Last Day to Drop 16 Week Courses
April 8	Enrollment for the 2019 Summer/Fall Sessions Begins
<b>April 19</b>	<b>GOOD FRIDAY - COLLEGE CLOSED</b>
April 29	Last Day to Drop 2nd 8 week courses
May 8-10	Final Exams
May 8-10	Book Buy Back at the Bookstore
May 11	Graduation
May 11, 3:00pm	Residence Halls Close
<b>May 27</b>	<b>MEMORIAL DAY - COLLEGE CLOSED</b>

# COFFEYVILLE COMMUNITY COLLEGE

## COURSE SCHEDULE

### Spring 2019

#### MAIN CAMPUS - 16 WEEK COURSES

1/9/19 - 5/10/19

### AGRIBUSINESS

Course No.	Course Title	Cr	Begins	Ends	Days	Room	Instructor
AGRI 170 01	Agriculture in Our Society	2.00	10:30 AM	11:50 AM	TR	WH 128	K Allen
AGRI 173 01	Agricultural Seminar	2.00	1:00 PM	1:50 PM	MW	WH 128	K Allen
AGRI 226 01	Agri-Selling	2.00	8:00 AM	8:50 AM	TR	WH 128	K Allen
AGRI 227 01	Agricultural Internship	2.00	1:00 PM	2:50 PM	T	WH 128	K Allen

### ART

Course No.	Course Title	Cr	Begins	Ends	Days	Room	Instructor
ARTS 110 01	Photography I	3.00	1:00 PM	1:50 PM	MWF	ORS 101	M DeRosa
ARTS 144 01	Painting I	3.00	10:30 AM	11:50 AM	TR	ORS 108	M DeRosa
ARTS 150 01	Ceramics I	3.00	12:00 PM	12:50 PM	MWF	ORS 105	M DeRosa
ARTS 155 01	Cinema Traditions:Film Genres	3.00	6:30 PM	9:30 PM	T	WH 127	Z Mitchell
ARTS 250 01	Ceramics II	3.00	1:00 PM	2:20 PM	TR	ORS 105	M DeRosa

### BIOLOGY

Course No.	Course Title	Cr	Begins	Ends	Days	Room	Instructor
BIOL 101 01	General Biology	5.00	8:00 AM	8:50 AM	MWF	A/S 312	R King
	Lab		7:30 AM	8:50 AM	TR	A/S 228	
BIOL 101 02	General Biology	5.00	9:00 AM	9:50 AM	MWF	A/S 306	P Oliver
	Lab		9:00 AM	10:20 AM	TR	A/S 228	
BIOL 101 03	General Biology	5.00	10:00 AM	10:50 AM	MWF	A/S 312	R King
	Lab		10:30 AM	11:50 AM	TR	A/S 228	
BIOL 101 04	General Biology	5.00	1:00 PM	2:20 PM	TR	A/S 312	R King
	Lab		2:30 PM	3:50 PM	TR	A/S 228	
BIOL 103 01	Environmental Science	5.00	1:00 PM	2:20 PM	TR	A/S 306	P Oliver
	Lab		1:00 PM	2:20 PM	MW	A/S 228	
BIOL 203 01	Anatomy & Physiology#	5.00	10:00 AM	10:50 AM	MWF	A/S 319	D Barker
	Lab		10:30 AM	11:50 AM	TR	A/S 226	
BIOL 203 02	Anatomy & Physiology#	5.00	1:00 PM	2:20 PM	TR	A/S 319	D Barker
	Lab		2:30 PM	3:50 PM	TR	A/S 226	
BIOL 204 01	Microbiology	5.00	7:30 AM	8:50 AM	TR	A/S 319	D Barker
	Lab		7:30 AM	8:50 AM	MW	A/S 226	
BIOL 204 02	Microbiology	5.00	1:00 PM	2:20 PM	MW	A/S 319	D Barker
	Lab		2:30 PM	3:50 PM	MW	A/S 226	
BIOL 208 01	Biology II:Organismic Biology	5.00	8:00 AM	8:50 AM	MWF	A/S 306	P Oliver
	Lab		7:30 AM	8:50 AM	TR	A/S 226	

# Course has prerequisite - check catalog

% Pre-approval of instructor required to enroll

\$ For Athletic Training majors - see instructor before enrolling

\* Appointment class. Student must contact the instructor on or before the first day of class to receive course materials and instructions.

## BUSINESS

Course No.	Course Title	Cr	Begins	Ends	Days	Room	Instructor
BUSN 116 01	Fundamentals of Business	3.00	9:00 AM	10:20 AM	TR	WH 127	D Allen
BUSN 116 02	Fundamentals of Business	3.00	10:00 AM	10:50 AM	MWF	WH 127	D Allen
BUSN 133 01	Business Math	3.00	12:00 PM	12:50 PM	MWF	WH 132	C Nelson
BUSN 137 01	Small Business Management	3.00	11:00 AM	11:50 AM	MWF	WH 127	D Allen
BUSN 171 01	Financial Accounting	3.00	9:00 AM	9:50 AM	MWF	WH 132	C Nelson
BUSN 185 01	Introduction to Sports Management	3.00	9:00 AM	10:20 AM	TR	WH 134	J Richardson
BUSN 202 01	Marketing	3.00	10:30 AM	11:50 AM	TR	WH 127	D Allen
BUSN 221 01	Managerial Accounting	3.00	9:00 AM	10:20 AM	TR	WH 132	C Nelson

## CHEMISTRY

Course No.	Course Title	Cr	Begins	Ends	Days	Room	Instructor
CHEM 101 01	Fundamentals of Chemistry Lab	5.00	7:30 AM 7:30 AM	8:50 AM 8:50 AM	TR MW	A/S 219 A/S 201	A Lumley
CHEM 103 01	Principles of Chemistry I Lab	5.00	9:00 AM 9:00 AM	9:50 AM 10:20 AM	MWF TR	A/S 219 A/S 201	A Lumley
CHEM 104 01	Prin of Chem II & Qual Analysis Lab	5.00	10:00 AM 10:30 AM	10:50 AM 11:50 AM	MWF TR	A/S 219 A/S 201	A Lumley

## COLLEGE PREPARATION STUDIES

Course No.	Course Title	Cr	Begins	Ends	Days	Room	Instructor
<i>Note: Must have ACT or ACCUPLACER scores on file before enrolling in Math and English courses.</i>							
PREP 005 01	Introductory Algebra	3.00	10:30 AM	11:50 AM	TR	WH 130	J Weil
PREP 006 01	College Study Skills	3.00	*appointment			WH 128	K Allen
PREP 009 01	Written Communications	3.00	10:30 AM	11:50 AM	TR	A/S 306	S Peyton
PREP 009 04	Written Communications	3.00	11:00 AM	11:50 AM	MWF	A/S 171	S Meek
PREP 010 01	Developmental English	3.00	9:00 AM	10:20 AM	TR	A/S 306	S Peyton

## COMPUTERS

Course No.	Course Title	Cr	Begins	Ends	Days	Room	Instructor
COMP 162 02	Computer Concepts & Applications	3.00	8:00 AM	8:50 AM	MWF	WH 103	D Thornburg
COMP 162 05	Computer Concepts & Applications	3.00	10:00 AM	10:50 AM	MWF	WH 103	S Hurlbutt
COMP 162 03	Computer Concepts & Applications	3.00	10:30 AM	11:50 AM	TR	WH 103	D Thornburg
COMP 162 06	Computer Concepts & Applications	3.00	11:00 AM	11:50 AM	MWF	WH 103	S Hurlbutt
COMP 162 07	Computer Concepts & Applications	3.00	12:00 PM	12:50 PM	MWF	WH 103	S Hurlbutt
COMP 162 01	Computer Concepts & Applications	3.00	12:00 PM	1:20 PM	TR	WH 103	S Hurlbutt
COMP 162 08	Computer Concepts & Applications	3.00	1:00 PM	1:50 PM	MWF	WH 103	S Hurlbutt
COMP 285 01	Image Manipulation: Adobe Photoshop	3.00	10:30 AM	11:50 AM	TR	WH 102	S Hurlbutt
COMP 296 01	Web Animation: Adobe Flash	3.00	11:00 AM	11:50 AM	MWF	WH 102	D Thornburg
COMP 297 01	Web Page Design: Adobe Dreamweaver	3.00	10:00 AM	10:50 AM	MWF	WH 102	D Thornburg

## DIGITAL MEDIA AND COMMUNICATIONS

Course No.	Course Title	Cr	Begins	Ends	Days	Room	Instructor
COMM 101 01	Introduction to Mass Communications	3.00	9:00 AM	10:20 AM	TR	A/S 304	D Andrews
COMM 225 01	Digital Photography	3.00	10:30 AM	11:50 AM	TR	A/S 315	Z Mitchell
COMM 260 01	TV Production Practice I	3.00	1:00 PM	2:20 PM	TR	A/S 171	Z Mitchell

# Course has prerequisite - check catalog

% Pre-approval of instructor required to enroll

\$ For Athletic Training majors - see instructor before enrolling

\* Appointment class. Student must contact the instructor on or before the first day of class to receive course materials and instructions.



## ECONOMICS

Course No.	Course Title	Cr	Begins	Ends	Days	Room	Instructor
ECON 206 01	Principles of Microeconomics	3.00	11:00 AM	11:50 AM	MWF	WH 132	C Nelson

## EDUCATION

Course No.	Course Title	Cr	Begins	Ends	Days	Room	Instructor
EDUC 195 01	Introduction to Education	3.00	10:00 AM	10:50 AM	MWF	A/S 171	S Meek
EDUC 220 HY	Pre-Prof Teaching Lab	1.00	12:00 PM	12:50 PM	M	A/S 314	S Meek

*This class is Hybrid with an online component*

## ENGINEERING

Course No.	Course Title	Cr	Begins	Ends	Days	Room	Instructor
ENGR 211 01	Engineering Physics II Lab	5.00	9:00 AM 9:00 AM	9:50 AM 10:20 AM	MWF TR	A/S 318 A/S 223	R Willis

## ENGLISH

Course No.	Course Title	Cr	Begins	Ends	Days	Room	Instructor
<i>Note: Must have ACT or ACCUPLACER scores on file before enrolling in Math and English courses.</i>							
ENGL 101 08	English Composition I	3.00	7:30 AM	8:50 AM	TR	A/S 317	D Beck
ENGL 101 07	English Composition I	3.00	9:00 AM	9:50 AM	MWF	A/S 317	D Beck
ENGL 101 04	English Composition I	3.00	10:00 AM	10:50 AM	MWF	A/S 307	Staff
ENGL 101 09	English Composition I	3.00	10:30 AM	11:50 AM	TR	A/S 317	D Beck
ENGL 101 02	English Composition I	3.00	10:30 AM	11:50 AM	TR	A/S 220	R Butcher
ENGL 101 05	English Composition I	3.00	11:00 AM	11:50 AM	MWF	A/S 307	Staff
ENGL 101 06	English Composition I	3.00	12:00 PM	12:50 PM	MWF	A/S 307	Staff
ENGL 102 01	English Composition II	3.00	8:00 AM	8:50 AM	MWF	A/S 220	R Butcher
ENGL 102 05	English Composition II	3.00	9:00 AM	10:20 AM	TR	A/S 307	Staff
ENGL 102 10	English Composition II	3.00	9:00 AM	10:20 AM	TR	A/S 317	D Beck
ENGL 102 12	English Composition II	3.00	10:00 AM	10:50 AM	MWF	A/S 220	R Butcher
ENGL 102 07	English Composition II	3.00	10:00 AM	10:50 AM	MWF	A/S 317	D Beck
ENGL 102 08	English Composition II	3.00	11:00 AM	11:50 AM	MWF	A/S 317	D Beck
ENGL 102 03	English Composition II	3.00	11:00 AM	11:50 AM	MWF	A/S 220	R Butcher
ENGL 102 06	English Composition II	3.00	12:00 PM	1:20 PM	TR	A/S 307	Staff

## FIRE SCIENCE

Course No.	Course Title	Cr	Begins	Ends	Days	Room	Instructor
FIRE 100 OL	Fire Service Orient/Terminology 1/16/19 - 5/10/19	3.00				ONLINE	J Rexwinkle
FIRE 130 01	Firefighter II 1/10/19 - 5/09/19 <i>This class will meet from 9:00am-12:00pm on four Saturdays - 2/23, 3/09, 4/6 and 4/27</i>	4.00	12:15 PM	1:45 PM	TR	A/S 318	M O'Connor
FIRE 145 OL	Fundamentals of Fire Prevention 1/16/19 - 5/10/19	3.00				ONLINE	J Rexwinkle
FIRE 155 OL	Fire Detection & Suppression Syst 1/16/19 - 5/10/19	3.00				ONLINE	J Grimmett
FIRE 210 01	Strategic/Tct Consider Fire Grounds 1/10/19 - 5/09/19	3.00	10:30 AM	11:50 AM	TR	A/S 318	J Grimmett

# Course has prerequisite - check catalog

% Pre-approval of instructor required to enroll

\$ For Athletic Training majors - see instructor before enrolling

\* Appointment class. Student must contact the instructor on or before the first day of class to receive course materials and instructions.

## FOREIGN LANGUAGE

Course No.	Course Title	Cr				Room	Instructor
FLNG 103 OL	Spanish I	5.00				ONLINE	K Distefano
FLNG 104 OL	Spanish II	5.00				ONLINE	K Distefano

## GEOGRAPHY

Course No.	Course Title	Cr	Begins	Ends	Days	Room	Instructor
GEOG 120 01	World Geography	3.00	10:00 AM	10:50 AM	MWF	WH 107	M Manley

## GOVERNMENT

Course No.	Course Title	Cr	Begins	Ends	Days	Room	Instructor
GOVN 104 01	United States Government	3.00	8:00 AM	8:50 AM	MWF	WH 130	C Feerer
GOVN 104 02	United States Government	3.00	9:00 AM	10:20 AM	TR	WH 130	C Feerer

## HEALTH AND PHYSICAL EDUCATION

Course No.	Course Title	Cr	Begins	Ends	Days	Room	Instructor
HPER 102 01	Personal Hygiene & Community Health	3.00	9:00 AM	10:20 AM	TR	WH 129	R Wood
HPER 103 01	Intro to Health Physical Ed Rec	3.00	10:30 AM	11:50 AM	TR	WH 129	R Wood
HPER 105 01	Rules & Officiating of Sports	2.00	11:00 AM	11:50 AM	MW	WH 129	K Fisher
HPER 111 01	Lifetime Fitness Concepts	2.00	9:00 AM	9:50 AM	MW	WH 129	C Perry
HPER 111 02	Lifetime Fitness Concepts	2.00	10:00 AM	10:50 AM	MW	WH 129	R Wood
HPER 112 06	Physical Fitness: Men's Soccer	2.00	1:00 PM	3:00 PM	MTWR	STAD	J Schicke
HPER 112 05	Physical Fitness: Golf	2.00	1:30 PM	3:30 PM	MTWR	HILCR	A Reeves
HPER 112 07	Physical Fitness: Women's Soccer	2.00	3:00 PM	5:00 PM	MTWR	STAD	J Schicke
HPER 112 04	Physical Fitness: Volleyball	2.00	3:30 PM	5:30 PM	MTWR	N/E	D Downing
HPER 112 03	Physical Fitness: Football	2.00	3:30 PM	5:30 PM	MTWR	COMPL	A Flores
HPER 112 02	Physical Fitness: Football	2.00	3:30 PM	5:30 PM	MTWR	COMPL	Staff
HPER 112 01	Physical Fitness: Football	2.00	3:30 PM	5:30 PM	MTWR	COMPL	Staff
HPER 140 HY	Walkinng for Fitness	1.00	*appointment			AO	Staff
	<i>This class is a Hybrid with an online component</i>						
HPER 140 01	Individual Activity: Tumbling	1.00	10:30 AM	11:50 AM	TR	N/E	J Richardson
HPER 140 07	Ind. Act: Disc Golf & Foot Golf	1.00	10:30 AM	11:50 AM	TR	AO 100	J Schicke
HPER 140 02	Ind. Act. : Jazz Dance Techniques	1.00	11:00 AM	11:50 AM	TR	N/W	J Wallis
HPER 140 06	Native American Leadership	1.00	12:00 PM	12:50 PM	M	WH 129	T Harrel
HPER 140 03	Individual Activity: Powerlifting	1.00	12:30 PM	2:00 PM	MWF	COMPL	M Allen
HPER 140 04	Individual Activity: Rodeo	1.00	3:00 PM	5:00 PM	MTWR	PARK	J Weil
HPER 140 05	Individual Activity: Yoga	1.00	5:30 PM	6:20 PM	MW	TECH 200	N Burrows
HPER 150 03	Team Activity: Women's Basetball	1.00	1:30 PM	3:30 PM	MTWR	N/W	S Harrel
HPER 150 04	Team Activity: Softball	1.00	3:00 PM	5:00 PM	MTWR	BYERS	S Blockburger
HPER 150 01	Team Activity: Baseball	1.00	3:00 PM	5:00 PM	MTWR	PARK	J Martin
HPER 150 05	Team Activity: Cross Country	1.00	3:30 PM	4:30 PM	MTWR	STAD	C Perry
HPER 150 02	Team Activity: Men's Basketball	1.00	3:30 PM	5:30 PM	MTWR	N/W	J Herkelman
HPER 165 01	Introduction to Athletic Training	3.00	8:00 AM	8:50 AM	MWF	STU/U	Staff
HPER 270 01	Bas Prev & Care of Athlhc Injuries	3.00	9:00 AM	10:20 AM	TR	STU/U	E Macaronas

## SEQUENCED COURSES

Course No.	Course Title	Cr	Begins	Ends	Days	Room	Instructor
HPER 111 01	Lifetime Fitness Concepts	2.00	9:00 AM	9:50 AM	MW	WH 129	C Perry
PSYC 100 01	College Orientation I	1.00	9:00 AM	9:50 AM	F	WH 129	J Wallis
HPER 111 02	Lifetime Fitness Concepts	2.00	10:00 AM	10:50 AM	MW	WH 129	R Wood
PSYC 100 02	College Orientation I	1.00	10:00 AM	10:50 AM	F	WH 129	J Richardson

# Course has prerequisite - check catalog

% Pre-approval of instructor required to enroll

\$ For Athletic Training majors - see instructor before enrolling

\* Appointment class. Student must contact the instructor on or before the first day of class to receive course materials and instructions.

## HISTORY

Course No.	Course Title	Cr	Begins	Ends	Days	Room	Instructor
HIST 102 01	Early US History	3.00	9:00 AM	9:50 AM	MWF	WH 107	M Manley
HIST 102 03	Early US History	3.00	12:00 PM	1:20 PM	TR	WH 107	M Manley
HIST 103 01	Recent US History	3.00	8:00 AM	8:50 AM	MWF	WH 107	M Manley
HIST 103 04	Recent US History	3.00	10:30 AM	11:50 AM	TR	WH 107	M Manley
HIST 103 02	Recent US History	3.00	11:00 AM	11:50 AM	MWF	WH 107	M Manley

## HUMANITIES

Course No.	Course Title	Cr	Begins	Ends	Days	Room	Instructor
HUMN 104 01	Introduction to Philosophy	3.00	10:30 AM	11:50 AM	TR	WH 134	M Arpin
HUMN 125 01	Humanities I	1.00	10:30 AM	11:50 AM	T	A/S 178	R Mahannah
HUMN 153 01	Comparative Humanities:Honors	3.00	1:00 PM	4:50 PM	W	WH 132	T Harrel
HUMN 225 01	Humanities III: Academic Challenge	3.00	1:30 PM	2:50 PM	TR	WH 132	T Harrel
HUMN 235 01	Humanities IV	3.00	10:30 AM	11:50 AM	TR	A/S 178	D Andrews
HUMN 235 02	Humanities IV: Academic Challenge	3.00	1:30 PM	2:50 PM	TR	WH 132	T Harrel

## MATHEMATICS

Course No.	Course Title	Cr	Begins	Ends	Days	Room	Instructor
<i>Note: Must have ACT or ACCUPLACER scores on file before enrolling in Math and English courses.</i>							
MATH 102 05	Intermediate Algebra	3.00	8:00 AM	8:50 AM	MWF	A/S 304	R Willis
MATH 102 01	Intermediate Algebra	3.00	9:00 AM	10:20 AM	TR	A/S 310	K Payne
MATH 102 02	Intermediate Algebra	3.00	10:00 AM	10:50 AM	MWF	A/S 311	S Eytcheson
MATH 104 01	College Algebra with Review	5.00	9:00 AM	9:50 AM	MTWRF	A/S 311	S Eytcheson
MATH 105 01	College Algebra	3.00	8:00 AM	8:50 AM	MWF	A/S 310	K Payne
MATH 105 02	College Algebra	3.00	9:00 AM	9:50 AM	MWF	A/S 310	K Payne
MATH 105 06	College Algebra	3.00	10:00 AM	10:50 AM	MWF	A/S 304	R Willis
MATH 105 03	College Algebra	3.00	10:30 AM	11:50 AM	TR	A/S 310	K Payne
MATH 105 05	College Algebra	3.00	11:00 AM	11:50 AM	MWF	A/S 311	S Eytcheson
MATH 106 01	Trigonometry	3.00	7:30 AM	8:50 AM	TR	A/S 304	R Willis
MATH 120 01	Calculus with Analytic Geometry II	5.00	8:00 AM	8:50 AM	MTWRF	A/S 311	S Eytcheson
MATH 202 01	Differential Equations	3.00	11:00 AM	11:50 AM	MWF	A/S 310	K Payne
MATH 250 01	Elementary Statistics	3.00	10:00 AM	10:50 AM	MWF	A/S 310	K Payne

## MUSIC

Course No.	Course Title	Cr	Begins	Ends	Days	Room	Instructor
MUSC 103 01	Jazz Ensemble II	1.00	3:00 PM	4:15 PM	TR	N/E 106	M Christensen
MUSC 111 01	Concert Choir	1.00	11:00 AM	11:50 AM	MWF	N/E 100	M Porter
MUSC 112 01	Wind Ensemble I	2.00	2:00 PM	3:15 PM	MWF	N/E 106	M Christensen
MUSC 117 04	Applied Music: Instrumental II%	1.00	*appointment			N/E 106	M Christensen
MUSC 117 05	Applied Music: Piano I%	1.00	*appointment			N/E 103	K Reedy
MUSC 117 06	Applied Music: Piano II%	1.00	*appointment			N/E 103	K Reedy
MUSC 120 01	Vocal Ensemble%	1.00	9:00 AM	10:20 AM	TR	N/E 100	M Porter
MUSC 122 01	Music Appreciation	3.00	9:00 AM	9:50 AM	MWF	WH 127	M Christensen
MUSC 123 01	Music Theory I	3.00	1:00 PM	1:50 PM	MWF	WH 127	M Christensen
MUSC 136 01	Wind Ensemble II	2.00	2:00 PM	3:15 PM	MWF	N/E 106	M Christensen
MUSC 203 01	Jazz Ensemble IV	1.00	3:00 PM	4:15 PM	TR	N/E 106	M Christensen
MUSC 211 01	Concert Choir II	1.00	11:00 AM	11:50 AM	MWF	N/E 100	M Porter

## PHYSICS

Course No.	Course Title	Cr	Begins	Ends	Days	Room	Instructor
PHYS 204 01	College Physics II Lab	5.00	9:00 AM 9:00 AM	9:50 AM 10:20 AM	MWF TR	A/S 318 A/S 223	R Willis

# Course has prerequisite - check catalog

% Pre-approval of instructor required to enroll

\$ For Athletic Training majors - see instructor before enrolling

\* Appointment class. Student must contact the instructor on or before the first day of class to receive course materials and instructions.

## PSYCHOLOGY

Course No.	Course Title	Cr	Begins	Ends	Days	Room	Instructor
PSYC 100 OL	College Orientation I	1.00				ONLINE	J Wallis
PSYC 100 01	College Orientation I	1.00	9:00 AM	9:50 AM	F	WH 129	J Wallis
PSYC 100 02	College Orientation I	1.00	10:00 AM	10:50 AM	F	WH 129	J Richardson
PSYC 101 01	General Psychology	3.00	8:00 AM	8:50 AM	MWF	WH 134	M Arpin
PSYC 101 03	General Psychology	3.00	6:30 PM	9:30 PM	T	WH 134	M Arpin
PSYC 102 01	Developmental Psychology	3.00	9:00 AM	9:50 AM	MWF	WH 134	M Arpin
PSYC 107 OL	College Orientation II	1.00				ONLINE	M Evensvold
PSYC 125 01	Human Sexuality	3.00	10:00 AM	10:50 AM	MWF	WH 134	M Arpin

## SEQUENCED COURSES

Course No.	Course Title	Cr	Begins	Ends	Days	Room	Instructor
HPER 111 01	Lifetime Fitness Concepts	2.00	9:00 AM	9:50 AM	MW	WH 129	C Perry
PSYC 100 01	College Orientation I	1.00	9:00 AM	9:50 AM	F	WH 129	J Wallis
HPER 111 02	Lifetime Fitness Concepts	2.00	10:00 AM	10:50 AM	MW	WH 129	R Wood
PSYC 100 02	College Orientation I	1.00	10:00 AM	10:50 AM	F	WH 129	J Richardson

## SOCIOLOGY

Course No.	Course Title	Cr	Begins	Ends	Days	Room	Instructor
SOCI 101 02	Introduction to Sociology	3.00	9:00 AM	9:50 AM	MWF	WH 130	C Feerer
SOCI 101 03	Introduction to Sociology	3.00	11:00 AM	11:50 AM	MWF	WH 130	C Feerer
SOCI 101 04	Introduction to Sociology	3.00	12:00 PM	1:20 PM	TR	WH 130	C Feerer
SOCI 101 05	Introduction to Sociology	3.00	6:30 PM	9:30 PM	T	WH 130	C Feerer
SOCI 290 01	Problems in Sociology: Child Abuse	2.00	12:00 PM	1:20 PM	TR	WH 134	M Arpin

## SPEECH

Course No.	Course Title	Cr	Begins	Ends	Days	Room	Instructor
SPCH 111 04	Public Speaking	3.00	8:00 AM	8:50 AM	MWF	A/S 315	D Andrews
SPCH 111 05	Public Speaking	3.00	9:00 AM	9:50 AM	MWF	A/S 315	D Andrews
SPCH 111 06	Public Speaking	3.00	10:00 AM	10:50 AM	MWF	A/S 315	D Andrews
SPCH 111 02	Public Speaking	3.00	10:30 AM	11:50 AM	TR	A/S 314	S Meek
SPCH 111 07	Public Speaking	3.00	11:00 AM	11:50 AM	MWF	A/S 315	D Andrews

## THEATRE

Course No.	Course Title	Cr	Begins	Ends	Days	Room	Instructor
THTR 160 01	Theatre Appreciation	3.00	9:00 AM	9:50 AM	MWF	A/S 178	R Mahannah
THTR 161 01	Stagecraft	3.00	11:00 AM	11:50 AM	MWF	A/S 178	R Mahannah
THTR 171 01	Theatre Production II	1.00	1:00 PM	1:50 PM	F	A/S 178	R Mahannah
THTR 173 01	Theatre Production IV	1.00	1:00 PM	1:50 PM	F	A/S 178	R Mahannah
THTR 264 01	Fundamentals of Acting II	3.00	10:00 AM	10:50 AM	MWF	A/S 178	R Mahannah

**Courses may be added after the printing of this booklet.  
Please visit with your advisor for a list of additional courses, if applicable,  
or visit our searchable, real-time schedule online at  
[www.coffeyville.edu/student-services/course-schedules](http://www.coffeyville.edu/student-services/course-schedules)**

# COFFEYVILLE COMMUNITY COLLEGE

## COURSE SCHEDULE

Spring 2019

MAIN CAMPUS - 1st 8 WEEK COURSES

1/9/19 - 3/5/19

*The following courses meet daily*

### 9:00am

Course No.	Course Title	Cr	Begins	Ends	Days	Room	Instructor
ARTS 147 01	Drawing I	3.00	9:00 AM	9:50 AM	MWF	ORS 109	M DeRosa
			9:00 AM	10:20 AM	TR		
COMP 162 04	Computer Concepts & Applications	3.00	9:00 AM	9:50 AM	MWF	WH 103	D Thornburg
			9:00 AM	10:20 AM	TR		
ENGL 101 01	English Composition I	3.00	9:00 AM	9:50 AM	MWF	A/S 220	R Butcher
			9:00 AM	10:20 AM	TR		
PREP 005 02	Introductory Algebra	3.00	9:00 AM	9:50 AM	MWF	A/S 319	A Reeves
			9:00 AM	10:20 AM	TR		

### 11:00am

Course No.	Course Title	Cr	Begins	Ends	Days	Room	Instructor
MATH 105 07	College Algebra	3.00	11:00 AM	11:50 AM	MWF	A/S 304	R Willis
			11:00 AM	12:20 PM	TR		

### 1:00pm

Course No.	Course Title	Cr	Begins	Ends	Days	Room	Instructor
MATH 102 04	Intermediate Algebra	3.00	1:00 PM	1:50 PM	MWF	A/S 311	S Eytcheson
			1:00 PM	2:20 PM	TR		
SPCH 111 03	Public Speaking	3.00	1:00 PM	1:50 PM	MWF	A/S 314	S Meek
			1:00 PM	2:20 PM	TR		

*Note: Must have ACT or ACCUPLACER scores on file before enrolling in Math and English courses*

**Courses may be added after the printing of this booklet.  
Please visit with your advisor for a list of additional courses, if applicable,  
or visit our searchable, real-time schedule online at  
[www.coffeyville.edu/student-services/course-schedules](http://www.coffeyville.edu/student-services/course-schedules)**

# ONLINE SCHEDULE

CCC provides general education transfer and career preparation courses via the Internet to allow students flexibility in completing their degree online. Students will gain access into their online classes beginning the first scheduled day of a class. For more information contact Brad Weber, Director of Distance Learning at 620-252-7076 or [weber.brad@coffeyville.edu](mailto:weber.brad@coffeyville.edu).

## Spring 2019

### 1st 8 WEEK COURSES

1/9/19 - 3/5/19

### ONLINE COURSE OFFERINGS

<b>Course No.</b>	<b>Course Title</b>	<b>Cr</b>		<b>Instructor</b>
BUSN 116 OL	Fundamentals of Business	3.00	ONLINE	D Allen
BUSN 119 OL	Personal Finance	3.00	ONLINE	C Nelson
COMP 161 OL	Computer Information Systems	3.00	ONLINE	D Thornburg
ENGL 101 OL	English Composition I	3.00	ONLINE	T McCloughan
FACS 107 OL	Marriage and the Family	3.00	ONLINE	E Cameron
GEOG 120 OL	World Geography	3.00	ONLINE	M Manley
HIST 103 OL	Recent US History	3.00	ONLINE	J Armitage
PHYS 205 OL	Physical Science	5.00	ONLINE	A Lumley
PREP 005 OL	Introductory Algebra	3.00	ONLINE	A Reeves
PSYC 101 OL	General Psychology	3.00	ONLINE	M Arpin
SOCI 101 OL	Introduction to Sociology	3.00	ONLINE	C Feerer

*Note: Must have ACT or ACCUPLACER scores on file before enrolling in Math and English courses.*

**Courses may be added after the printing of this booklet.  
Please visit with your advisor for a list of additional courses, if applicable,  
or visit our searchable, real-time schedule online at  
[www.coffeyville.edu/student-services/course-schedules](http://www.coffeyville.edu/student-services/course-schedules)**

# COFFEYVILLE COMMUNITY COLLEGE

## COURSE SCHEDULE

Spring 2019

MAIN CAMPUS - 2nd 8 WEEK COURSES

3/8/19 - 5/10/19

*The following courses meet daily*

### 9:00am

<u>Course No.</u>	<u>Course Title</u>	<u>Cr</u>	<u>Begins</u>	<u>Ends</u>	<u>Days</u>	<u>Room</u>	<u>Instructor</u>
ARTS 247 01	Drawing II	3.00	9:00 AM	9:50 AM	MWF	ORS 109	M DeRosa
			9:00 AM	10:20 AM	TR		
ENGL 102 02	English Composition II	3.00	9:00 AM	9:50 AM	MWF	A/S 220	R Butcher
			9:00 AM	10:20 AM	TR		
HPER 101 01	First Aid	2.00	9:00 AM	9:50 AM	MTWR	A/S 312	R King
SPCH 111 01	Public Speaking	3.00	9:00 AM	9:50 AM	MWF	A/S 314	S Meek
			9:00 AM	10:20 AM	TR		

### 1:00pm

<u>Course No.</u>	<u>Course Title</u>	<u>Cr</u>	<u>Begins</u>	<u>Ends</u>	<u>Days</u>	<u>Room</u>	<u>Instructor</u>
MATH 105 04	College Algebra	3.00	1:00 PM	1:50 PM	MWF	A/S 311	S Eytcheson
			1:00 PM	2:20 PM	TR		
SPCH 111 09	Public Speaking	3.00	1:00 PM	1:50 PM	MWF	A/S 315	D Andrews
			1:00 PM	2:20 PM	TR		

*Note: Must have ACT or ACCUPLACER scores on file before enrolling in Math and English courses.*

**Courses may be added after the printing of this booklet.  
Please visit with your advisor for a list of additional courses, if applicable,  
or visit our searchable, real-time schedule online at  
[www.coffeyville.edu/student-services/course-schedules](http://www.coffeyville.edu/student-services/course-schedules)**

# ONLINE SCHEDULE

CCC provides general education transfer and career preparation courses via the Internet to allow students flexibility in completing their degree online. Students will gain access into their online classes beginning the first scheduled day of a class. For more information contact Brad Weber, Director of Distance Learning at 620-252-7076 or [weber.brad@coffeyville.edu](mailto:weber.brad@coffeyville.edu).

## Spring 2019

### 2nd 8 WEEK COURSES

3/8/19 - 5/10/19

### ONLINE COURSE OFFERINGS

<b>Course No.</b>	<b>Course Title</b>	<b>Cr</b>		<b>Instructor</b>
ARTS 140 OL	Art History & Appreciation I	3.00	ONLINE	M DeRosa
BIOL 101 OL	General Biology	5.00	ONLINE	P Oliver
BUSN 175 OL	Introduction to Leadership	3.00	ONLINE	D Allen
COMP 162 OL	Computer Concepts & Applications	3.00	ONLINE	D Thornburg
ENGL 102 OL	English Composition II	3.00	ONLINE	T McCloughan
FACS 210 OL	Nutrition	3.00	ONLINE	C Redden
GOVN 104 OL	United States Government	3.00	ONLINE	J Armitage
HPER 111 OL	Lifetime Fitness Concepts	2.00	ONLINE	A Walker
MATH 102 OL	Intermediate Algebra	3.00	ONLINE	K Payne
PSYC 102 OL	Developmental Psychology	3.00	ONLINE	T Harrel
SPCH 211 OL	Interpersonal & Group Communication	3.00	ONLINE	S Meek

*Note: Must have ACT or ACCUPLACER scores on file before enrolling in Math and English courses.*

**Courses may be added after the printing of this booklet.  
Please visit with your advisor for a list of additional courses, if applicable,  
or visit our searchable, real-time schedule online at  
[www.coffeyville.edu/student-services/course-schedules](http://www.coffeyville.edu/student-services/course-schedules)**



# FINAL EXAM SCHEDULE SPRING 2019

<u>Regular Class Time</u>	<u>Final Exam Date &amp; Time</u>
8:00 AM: MWF, MW, MTWR, MTWRF	8:00-9:40 Wednesday, 5/8
9:00 AM: MWF, MW, MTWR, MTWRF	10:00-11:40 Thursday, 5/9
10:00 AM: MWF, MW, MTWR, MTWRF	10:00-11:40 Friday, 5/10
11:00 AM: MWF, MW, MTWR, MTWRF	12:00-1:40 Wednesday, 5/8
12:00 PM: MWF, MW, MTWR, MTWRF	12:00-1:40 Thursday, 5/9
1:00 PM: MWF, MW, MTWR, MTWRF	2:00-3:40 Friday, 5/10
2:00 PM: MWF, MW, MTWR, MTWRF	2:00-3:40 Wednesday, 5/8
3:00 PM: MWF, MW, MTWR, MTWRF	4:00-5:40 Thursday, 5/9
7:30 AM: TR	8:00-9:40 Thursday, 5/9
9:00 AM: TR	8:00-9:40 Friday, 5/10
10:30 AM: TR	10:00-11:40 Wednesday, 5/8
12:00 PM: TR	2:00-3:40 Thursday, 5/9
1:30 PM: TR	12:00-1:40 Friday, 5/10
3:00 PM: TR	4:00-5:40 Wednesday, 5/8

**FINALS FOR EVENING CLASSES AND ONE CREDIT HOUR COURSES ARE ON THE  
LAST SCHEDULED DAY OF CLASS.  
ALL OTHER CLASSES WILL SCHEDULE FINAL EXAMS BY ARRANGEMENT.**

# **COFFEYVILLE COMMUNITY COLLEGE**

## **COFFEYVILLE TECHNICAL CAMPUS**

# COFFEYVILLE TECHNICAL CAMPUS

## CALENDAR: FALL

April 9, 2018	Enrollment for the 2018 Summer / Fall Sessions begins
July 27	Summer II Session Ends
Aug 6	Bookstore Charges Begin
Aug 6-7	Summer II Book Buy Back: Bookstore
Aug 6 - Sept 3	Student ID's No Charge (8:00am - 5:00pm M-F in the Student Success Center)
Aug 13	Residence Halls Open

**ENROLLED STUDENTS WHO HAVE NOT FINALIZED ENROLLMENT  
BY 5:00 P.M. THE DAY PRIOR TO CLASSES STARTING  
WILL BE DROPPED FROM ALL COURSES.**

Aug 15	Fall Courses Begin - All Campuses
Aug 22	Last Day for Book Refund with Receipt
Aug 29	Last Day for Full Book Refund at the Bookstore with Drop Slip & Receipt
<b>Sept 3</b>	<b>LABOR DAY, COLLEGE CLOSED</b>
Sept 5	\$10 Processing Charge Assessed for All New Student ID's
Nov 2	Last Day to Drop 16 Week Courses
Nov 5	Enrollment for Spring 2019 Session Begins
<b>Nov 21-23</b>	<b>THANKSGIVING BREAK - COLLEGE CLOSED</b>
Dec 4-6	Book Buy Back at the Bookstore
Dec 8, 3:00pm	Residence Halls Close
Dec 19	Technical Courses End
<b>Dec 20 - Jan 2</b>	<b>MAIN CAMPUS CLOSED</b>
<b>Dec 20- Jan 2</b>	<b>TECHNICAL CAMPUSES CLOSED</b>

# COFFEYVILLE TECHNICAL CAMPUS

Fall 2018

8/15/18 - 12/19/18

## AUTO COLLISION REPAIR TECHNOLOGY

### FIRST SEMSTER

Course No.	Course Title	Cr	Begins	Ends	Days	Room	Instructor
ACRT 105 12	Collision Repair Safety	1.00	7:30 AM	7:45 AM	MTWRF	TECH 410	D Johnson
ACRT 107 12	Shop Math and Communications I	2.00	11:10 AM	11:45 AM	MTWRF	TECH 202	B Robison
ACRT 110 12	Paint & Refinishing I	3.00	7:55 AM	8:50 AM	MTWRF	TECH 410	D Johnson
ACRT 120 12	Non-Structural A & D Repair 1	4.00	9:00 AM	10:15 AM	MTWRF	TECH 410	D Johnson
ACRT 125 12	Structural A & D Repair 1	2.00	10:25 AM	11:00 AM	MTWRF	TECH 410	D Johnson
ACRT 130 12	Paint & Refinishing 2	3.00	1:15 PM	2:25 PM	MTWRF	TECH 410	D Johnson
ACRT 135 12	Non-Structural A & D Repair 2	4.00	2:35 PM	4:05 PM	MTWRF	TECH 410	D Johnson
ACRT 140 12	Structural A & D Repair 2	2.00	4:15 PM	4:50 PM	MTWRF	TECH 410	D Johnson
ACRT 145 12	Mechanical & Electrical	3.00	11:55 AM	1:05 PM	MTWRF	TECH 410	D Johnson

### FIRST SEMSTER HALF-TIME (AFTERNOON)

Course No.	Course Title	Cr	Begins	Ends	Days	Room	Instructor
ACRT 105 14	Collision Repair Safety	1.00	12:00 PM	12:15 PM	MTWRF	TECH 410	D Johnson
ACRT 107 14	Shop Math and Communications I	2.00	3:40 PM	4:15 PM	MTWRF	TECH 410	B Robison
ACRT 110 14	Paint & Refinishing I	3.00	12:25 PM	1:20 PM	MTWRF	TECH 410	D Johnson
ACRT 120 14	Non-Structural A & D Repair 1	4.00	1:30 PM	2:45 PM	MTWRF	TECH 410	D Johnson
ACRT 125 14	Structural A & D Repair 1	2.00	2:55 PM	3:30 PM	MTWRF	TECH 410	D Johnson

### RETURNING

Course No.	Course Title	Cr	Begins	Ends	Days	Room	Instructor
ACRT 150 12	Paint & Refinishing 3	3.00	8:15 AM	9:25 AM	MTWRF	TECH 410	D Johnson
ACRT 155 12	Non-Structural A & D Repair 3	4.00	9:35 AM	11:25 AM	MTWRF	TECH 410	D Johnson
ACRT 160 12	Structural A & D Repair 3	3.00	12:00 PM	1:10 PM	MTWRF	TECH 410	D Johnson
ACRT 170 12	Paint & Refinishing 4	4.00	1:20 PM	3:10 PM	MTWRF	TECH 410	D Johnson
ACRT 180 12	Non-Structural A&D Repair 4	5.00	3:20 PM	4:50 PM	MTWRF	TECH 410	D Johnson
ACRT 190 12	Structural A & D Repair 4	3.00	5:00 PM	6:10 PM	MTWRF	TECH 410	D Johnson
ACRT 217 12	Shop Math & Communications II	2.00	7:30 AM	8:05 AM	MTWRF	TECH 202	B Robison

### RETURNING HALF-TIME (MORNING)

Course No.	Course Title	Cr	Begins	Ends	Days	Room	Instructor
ACRT 130 14	Paint & Refinishing 2	3.00	8:50 AM	10:00 AM	MTWRF	TECH 410	D Johnson
ACRT 135 14	Non-Structural A & D Repair 2	4.00	10:10 AM	11:40 AM	MTWRF	TECH 410	D Johnson
ACRT 140 14	Structural A & D Repair 2	2.00	11:50 AM	12:25 PM	MTWRF	TECH 410	D Johnson
ACRT 145 14	Mechanical & Electrical	3.00	7:30 AM	8:40 AM	MTWRF	TECH 410	D Johnson

## AUTOMOTIVE SERVICE TECHNOLOGY

Course No.	Course Title	Cr	Begins	Ends	Days	Room	Instructor
ASTC 107 12	Shop Math & Comm I	2.00	10:40 AM	11:15 AM	MTWRF	TECH 202	B Robison
ASTC 109 12	Brakes 1	3.00	12:00 PM	1:05 PM	MTWRF	TECH 108	R Shafer
ASTC 140 12	Electrical 1	3.00	7:30 AM	8:25 AM	MTWRF	TECH 108	R Shafer
ASTC 171 12	Automatic Transmission	5.00	3:05 PM	4:45 PM	MTWRF	TECH 108	R Shafer
ASTC 217 12	Shop Math & Communications II	2.00	10:40 AM	11:15 AM	MTWRF	TECH 202	B Robison
ASTC 223 12	Electrical 2	6.00	8:35 AM	10:30 AM	MTWRF	TECH 108	R Shafer
ASTC 237 12	Brakes 2	5.00	1:15 PM	2:55 PM	MTWRF	TECH 108	R Shafer

# CONSTRUCTION TECHNOLOGY

## FIRST SEMESTER

Course No.	Course Title	Cr	Begins	Ends	Days	Room	Instructor
CNST 103 12	Introductory Craft Skill	3.00	7:30 AM	8:35 AM	MTWRF	CTC	C Ray
CNST 112 12	Carpentry Basics	4.00	9:10 AM	10:30 AM	MTWRF	CTC	C Ray
CNST 116 12	Blueprints & Building Codes	4.00	10:40 AM	12:00 PM	MTWRF	CTC	C Ray
CNST 118 12	Safety Orientation OSHA 10	1.00	8:45 AM	9:00 AM	MTWRF	CTC	C Ray
CNST 190 12	Survey & Elevations	3.00	12:10 PM	1:15 PM	MTWRF	CTC	C Ray
CNST 210 12	Drywall, Insulation, & Ventilation	4.00	1:25 PM	2:45 PM	MTWRF	CTC	C Ray
CNST 230 12	Exterior Construction	5.00	2:55 PM	4:40 PM	MTWRF	CTC	C Ray

## RETURNING

Course No.	Course Title	Cr	Begins	Ends	Days	Room	Instructor
CNST 107 12	Shop Math & Communications I	2.00	11:25 AM	12:00 PM	MTWRF	TECH 202	B Robison
CNST 126 12	Floors, Walls & Ceiling Framing	4.00	7:30 AM	8:45 AM	MTWRF	CTC	C Ray
CNST 136 12	Roof Framing	3.00	8:55 AM	10:00 AM	MTWRF	CTC	C Ray
CNST 151 12	Windows, Doors, & Stairs	3.00	10:10 AM	11:15 AM	MTWRF	CTC	C Ray
CNST 159 12	Painting, Finishing & Interior Dsgn	4.00	12:10 PM	1:25 PM	MTWRF	CTC	C Ray
CNST 180 12	Interior Construction	4.00	1:35 PM	3:50 PM	MTWRF	CTC	C Ray
CNST 221 12	Cabinet Installation & Fabrication	4.00	4:00 PM	5:15 PM	MTWRF	CTC	C Ray

## RETURNING PART-TIME (MORNING)

Course No.	Course Title	Cr	Begins	Ends	Days	Room	Instructor
CNST 190 14	Survey & Elevations	3.00	7:30 AM	8:35 AM	MTWRF	CTC	C Ray
CNST 210 14	Drywall, Insulation, & Ventilation	4.00	8:45 AM	10:05 AM	MTWRF	CTC	C Ray
CNST 230 14	Exterior Construction	5.00	10:15 AM	12:00 PM	MTWRF	CTC	C Ray

## RETURNING PART-TIME (AFTERNOON)

Course No.	Course Title	Cr	Begins	Ends	Days	Room	Instructor
CNST 107 14	Shop Math & Communications I	2.00	4:00 PM	4:35 PM	MTWRF	TECH 202	B Robison
CNST 126 14	Floors, Walls & Ceiling Framing	4.00	12:00 PM	1:15 PM	MTWRF	CTC	C Ray
CNST 136 14	Roof Framing	3.00	1:25 PM	2:30 PM	MTWRF	CTC	C Ray
CNST 151 14	Windows, Doors, & Stairs	3.00	2:45 PM	3:50 PM	MTWRF	CTC	C Ray

# ELECTRICAL TECHNOLOGY

## FULL TIME

Course No.	Course Title	Cr	Begins	Ends	Days	Room	Instructor
ELEC 116 12	AC/DC Circuits I	4.00	9:00 AM	10:20 AM	MTWRF	TECH 104A	T Kuhn
ELEC 118 12	Residential Wiring I	4.00	7:30 AM	8:50 AM	MTWRF	TECH 104A	T Kuhn
ELEC 130 12	Safety (OSHA 10)	1.00	10:30 AM	10:45 AM	MTWRF	TECH 104A	T Kuhn
ELEC 151 12	National Electrical Code	4.00	1:00 PM	2:20 PM	MTWRF	TECH 104A	T Kuhn
ELEC 153 12	National Electric Code II	4.00	2:30 PM	3:50 PM	MTWRF	TECH 104A	T Kuhn
ELEC 171 12	Electrical for HVAC	5.00	11:15 AM	12:50 PM	MTWRF	TECH 104A	T Kuhn

# INFORMATION SYSTEMS TECHNOLOGY

## FIRST SEMESTER

Course No.	Course Title	Cr	Begins	Ends	Days	Room	Instructor
NETW 100 12	Dsktp Hrdwr & Op Sys I	6.00	8:00 AM	9:55 AM	MTWRF	TECH 205	S Parker
NETW 105 12	Desktop Hrdwr & Op Systems II	6.00	10:05 AM	12:00 PM	MTWRF	TECH 205	S Parker
NETW 160 12	Networking Technology	6.00	12:30 PM	2:25 PM	MTWRF	TECH 205	S Parker
NETW 170 12	Introduction to Linux	6.00	2:35 PM	4:30 PM	MTWRF	TECH 205	S Parker

**RETURNING**

<b>Course No.</b>	<b>Course Title</b>	<b>Cr</b>	<b>Begins</b>	<b>Ends</b>	<b>Days</b>	<b>Room</b>	<b>Instructor</b>
NETW 125 12	Server Administration I	6.00	8:00 AM	9:55 AM	MTWRF	TECH 205	S Parker
NETW 130 12	Server Administration II	6.00	10:05 AM	12:00 PM	MTWRF	TECH 205	S Parker
NETW 253 12	Infrmtn Assrnce & Cmpttr Scrty I	6.00	12:30 PM	2:25 PM	MTWRF	TECH 205	S Parker
NETW 263 12	Infrmtn Assr & Computer Sec II	6.00	2:35 PM	4:30 PM	MTWRF	TECH 205	S Parker

**HEALTH APPLICATIONS**

<b>Course No.</b>	<b>Course Title</b>	<b>Cr</b>	<b>Begins</b>	<b>Ends</b>	<b>Days</b>	<b>Room</b>	<b>Instructor</b>
EMTP 115 01	CPR for Healthcare Providers 8/15/18 - 8/16/18	0.50	4:00 PM	9:00 PM	WR	TECH 212	N Stephens
CNAD 105 12	Certified Nurse Aide (CNA) 8/20/18 - 10/24/18 <i>This course requires clinical time with a Nursing Home Facility, which is tentatively scheduled for Friday &amp; Saturday, October 19 &amp; 20 from 7:00am-3:30pm. Students must be at least 16 years of age to enroll in the CNA class. Students enrolling in CNA must also enroll in a CPR class or provide proof of an active Heartsaver CPR certification.</i>	5.00	4:00 PM	9:00 PM	MW	TECH 212	N Stephens
EMTP 115 02	CPR for Healthcare Providers 9/06/18 - 9/11/18	0.50	12:00 PM	5:00 PM	TR	TECH 212	N Stephens
CNAD 105 14	Certified Nurse Aide (CNA) 9/13/18 - 11/15/18 <i>This course requires clinical time with a Nursing Home Facility, which is tentatively scheduled for Friday &amp; Saturday, November 9 &amp; 10 from 7:00am-3:30pm. Students must be at least 16 years of age to enroll in the CNA class. Students enrolling in CNA must also enroll in a CPR class or provide proof of an active Heartsaver CPR certification.</i>	5.00	12:00 PM	5:00 PM	TR	TECH 212	N Stephens
EMTP 115 04	CPR for Healthcare Providers 11/12/18 - 11/14/18	0.50	4:00 PM	9:00 PM	MW	TECH 212	N Stephens
CMAD 115 12	Certified Medication Aide (CMA) 11/26/18 - 12/18/18 <i>This course requires clinical time with a Nursgin Home Facility, which is tentatively scheduled for Saturdays, December 8 &amp; 15 from 7:00am-3:30pm. Students enrolling in CMA must also enroll in a CPR class or provide proof of an active Heartsaver Certification.</i>	4.00	4:00 PM	9:00 PM	MTWRF	TECH 212	N Stephens
CONT 230 04	CNA Update 8/11/18 - 8/11/18	0.50	7:00 AM	5:30 PM	S	TECH 212	N Stephens
CONT 230 02	CMA Recertification 9/8/18 - 9/8/18	0.50	7:00 AM	5:30 PM	S	TECH 212	N Stephens
CONT 230 06	CNA Update 11/03/18 - 11/03/18	0.50	7:00 AM	5:30 PM	S	TECH 212	N Stephens

**MEDICAL ASSISTANT**

<b>Course No.</b>	<b>Course Title</b>	<b>Cr</b>	<b>Begins</b>	<b>Ends</b>	<b>Days</b>	<b>Room</b>	<b>Instructor</b>
MEDA 100 01	Medical Professional Issues 8/16/18 - 8/31/18	2.00	9:00 AM	12:10 PM	TRF	TECH 206	W Simmons
MEDA 110 01	Insurance, Billing & Coding 10/23/18 - 12/13/18	3.00	9:00 AM	12:10 PM	TR	TECH 206	W Simmons
MEDA 150 01	Medical Administrative Aspects 9/04/18 - 10/19/18	4.00	9:00 AM	12:10 PM	TRF	TECH 206	W Simmons
MEDA 160 OT	Medical Terminology 8/15/18 - 12/19/18	3.00				ONLINE	W Simmons
MEDA 175 01	Hlth/Hum Body Hlth & Disease 8/16/18 - 12/13/18 <i>This class will meet on Tuesdays from 1:10-3:45pm beginning October 30th</i>	4.00	1:10 PM	4:00 PM	R	TECH 206	W Simmons
MEDA 128 01	Phlebotomy Essentials 8/21/18 - 10/23/18	3.00	12:45 PM	5:15 PM	T	TECH 206	S Newman
MEDA 129 01	Phlebotomy Clinical Applications 10/24/18 - 12/20/18 <i>This course is for Phlebotomy Students Only.</i>	3.00	*appointment			TECH 201	S Newman

## MEDICAL LABORATORY TECHNICIAN

A student must be accepted into the Medical Laboratory Technician Program to enroll in Medical Laboratory Technician courses. Please contact Susan Newman to enroll in Medical Laboratory Technician courses, 620-252-7550 ext 13.

## NURSING

A student must be accepted into the Nursing Program to enroll in Nursing courses. Please contact Heather Pollet, Director of Nursing, to enroll in Nursing courses, 620-252-7550, ext. 32.

## PARAMEDIC/ EMERGENCY SERVICES EDUCATION

### EMERGENCY MEDICAL TECHNICIAN (EMT) IN COFFEYVILLE

Course No.	Course Title	Cr	Begins	Ends	Days	Room	Instructor
EMTP 115 05	CPR for the Healthcare Provider 8/13/18 - 8/15/18	1.00	6:00 PM	10:00 PM	MW	TECH 210	C Goff
EMTP 136 01	Emergency Medical Technician 8/20/18 - 12/19/18	11.00	6:00 PM	10:00 PM	MWF	TECH 210	C Goff
EMTP 116 01	Emergency Defensive Driving 12/08/18 - 12/15/18	1.00	8:00 AM	5:00 PM	S	TECH 210	R McDaniel

### EMERGENCY MEDICAL TECHNICIAN (EMT) IN IOLA/ALLEN CC

Course No.	Course Title	Cr	Begins	Ends	Days	Room	Instructor
EMTP 115 06	CPR for the Healthcare Provider 8/13/18 - 8/15/18	1.00	6:00 PM	10:00 PM	MW	IOLA	A Hill
EMTP 136 02	Emergency Medical Technician 8/20/18 - 12/19/18	11.00	6:00 PM	10:00 PM	MWF	IOLA	A Hill
EMTP 116 01	Emergency Defensive Driving 12/08/18 - 12/15/18	1.00	8:00 AM	5:00 PM	S	TECH 210	R McDaniel

### PARAMEDIC (EMT-P)

A student must be accepted into the Paramedic Program to enroll in Paramedic courses. Please contact Randy McDaniel, EMT/P Program Instructor/Coordinator, to enroll in Paramedic Courses, 620-252-7550, ext 20.

## PHLEBOTOMY

Course No.	Course Title	Cr	Begins	Ends	Days	Room	Instructor
EMTP 115 03	CPR for Healthcare Providers 10/26/18 - 11/02/18	1.00	9:00 AM	4:00 PM	F	TECH 206	W Simmons
MEDA 128 01	Phlebotomy Essentials 8/21/18 - 10/23/18	3.00	12:45 PM	5:15 PM	T	TECH 206	S Newman
MEDA 129 01	Phlebotomy Clinical Applications 10/24/18 - 12/20/18	3.00	*appointment			TECH 201	S Newman

*This course is for Phlebotomy Students Only.*

## PRECISION MACHINING TECHNOLOGY

### FIRST SEMESTER FULL TIME

Course No.	Course Title	Cr	Begins	Ends	Days	Room	Instructor
MACH 106 12	Machining I	3.00	3:40 PM	5:10 PM	MTWRF	TECH 104	J Ruark
MACH 107 12	Shop Math and Communications I	2.00	9:15 PM	9:50 PM	MTWRF	TECH 202	B Robison
MACH 110 12	Safety (OSHA 10)	1.00	12:00 PM	12:15 PM	MTWRF	TECH 104	J Ruark
MACH 116 12	Print Reading	3.00	1:35 PM	3:05 PM	MTWRF	TECH 104	J Ruark
MACH 120 12	Precision Measurements & Gauges	2.00	8:30 PM	9:05 PM	MTWRF	TECH 104	J Ruark
MACH 131 12	Bench Work	1.00	1:10 PM	1:25 PM	MTWRF	TECH 104	J Ruark
MACH 140 12	Math for Manufacturing	3.00	7:45 PM	8:20 PM	MTWRF	TECH 104	J Ruark

<u>Course No.</u>	<u>Course Title</u>	<u>Cr</u>	<u>Begins</u>	<u>Ends</u>	<u>Days</u>	<u>Room</u>	<u>Instructor</u>
MACH 145 12	Machining II	3.00	6:00 PM	7:35 PM	MTWRF	TECH 104	J Ruark
MACH 160 12	Metallurgy	1.00	3:15 PM	3:30 PM	MTWRF	TECH 104	J Ruark
MACH 180 12	Workplace Ethics	2.00	12:25 PM	1:00 PM	MTWRF	TECH 104	J Ruark

#### SECOND SEMESTER FULL TIME

<u>Course No.</u>	<u>Course Title</u>	<u>Cr</u>	<u>Begins</u>	<u>Ends</u>	<u>Days</u>	<u>Room</u>	<u>Instructor</u>
MACH 135 12	Machine Tool Processes	1.00	12:25 PM	12:40 PM	MTWRF	TECH 104	J Ruark
MACH 170 12	Quality Control & Inspection	1.00	12:00 PM	12:15 PM	MTWRF	TECH 104	J Ruark
MACH 190 12	Computer Aided Design I	2.00	12:50 PM	1:25 PM	MTWRF	TECH 104	J Ruark
MACH 205 12	Precision Machining III	6.00	2:20 PM	4:10 PM	MTWRF	TECH 104	J Ruark
MACH 215 12	Precision Machining IV	6.00	5:00 PM	6:50 PM	MTWRF	TECH 104	J Ruark
MACH 230 12	CNC Operations	3.00	1:35 PM	2:10 PM	MTWRF	TECH 104	J Ruark
MACH 245 12	Precision Machining V	6.00	7:00 PM	8:50 PM	MTWRF	TECH 104	J Ruark

#### FIRST SEMESTER PART TIME (AFTERNOON)

<u>Course No.</u>	<u>Course Title</u>	<u>Cr</u>	<u>Begins</u>	<u>Ends</u>	<u>Days</u>	<u>Room</u>	<u>Instructor</u>
MACH 106 14	Machining I	3.00	7:45 PM	9:20 PM	MTWRF	TECH 104	J Ruark
MACH 110 14	Safety (OSHA 10)	1.00	4:00 PM	4:15 PM	MTWRF	TECH 104	J Ruark
MACH 116 14	Print Reading	3.00	5:35 PM	7:10 PM	MTWRF	TECH 104	J Ruark
MACH 131 14	Bench Work	1.00	5:10 PM	5:25 PM	MTWRF	ECH 104	J Ruark
MACH 160 14	Metallurgy	1.00	7:20 PM	7:35 PM	MTWRF	TECH 104	J Ruark
MACH 180 14	Workplace Ethics	2.00	4:25 PM	5:00 PM	MTWRF	TECH 104	J Ruark

## WELDING TECHNOLOGY

#### FIRST SEMESTER

<u>Course No.</u>	<u>Course Title</u>	<u>Cr</u>	<u>Begins</u>	<u>Ends</u>	<u>Days</u>	<u>Room</u>	<u>Instructor</u>
WELD 110 12	Welding Safety OSHA 10	1.00	7:30 AM	7:45 AM	MTWR	WTI	S Hammer
WELD 111 12	Oxy Acetylene and Safety	3.00	7:55 AM	9:00 AM	MTWRF	WTI	S Hammer
WELD 120 12	Shielded Metal Arc Welding	3.00	9:10 AM	10:10 AM	MTWRF	WTI	S Hammer
WELD 140 12	Shielded Metal Arc Welding II	3.00	10:20 AM	11:20 AM	MTWRF	WTI	S Hammer
WELD 160 12	Shielded Metal Arc Welding III	5.00	12:00 PM	1:45 PM	MTWRF	WTI	S Hammer
WELD 181 12	Gas Metal Arc Welding	3.00	1:55 PM	2:55 PM	MTWRF	WTI	S Hammer
WELD 231 12	Gas Metal Arc Welding II	5.00	3:05 PM	4:45 PM	MTWRF	WTI	S Hammer

#### SECOND SEMESTER

<u>Course No.</u>	<u>Course Title</u>	<u>Cr</u>	<u>Begins</u>	<u>Ends</u>	<u>Days</u>	<u>Room</u>	<u>Instructor</u>
WELD 190 12	Gas Tungsten Arc Welding	3.00	11:30 AM	12:30 PM	MTWRF	WTI	S Hammer
WELD 210 12	Gas Tungsten Arc Welding II (GTAW)	3.00	12:40 PM	1:40 PM	MTWRF	WTI	S Hammer
WELD 220 12	Gas Tungsten Arc Welding III	6.00	1:50 PM	3:50 PM	MTWRF	WTI	S Hammer
WELD 222 12	Fluxed Cored Arc Welding I	5.00	7:30 AM	9:15 AM	MTWRF	WTI	S Hammer
WELD 232 12	Fluxed Cored Arc Welding II	5.00	9:25 AM	11:10 AM	MTWRF	WTI	S Hammer
WELD 242 12	Pipe Layout & Blueprint Reading	1.00	4:00 PM	4:25 PM	MTWRF	WTI	S Hammer

## EVENING COURSES

<u>Course No.</u>	<u>Course Title</u>	<u>Cr</u>	<u>Begins</u>	<u>Ends</u>	<u>Days</u>	<u>Room</u>	<u>Instructor</u>
CONT 100 12	Basic Collision Repair 9/07/18 - 11/09/18	1.00	5:00 PM	9:00 PM	F	TECH 410	J Young
CONT 150 12	Introduction to Woods 9/10/18 - 11/12/18	1.00	6:00 PM	9:00 PM	M	CTC	C Ray
CONT 200 12	Weld App: Nat'l Standard Welding 9/06/18 - 10/09/18	1.00	5:00 PM	9:00 PM	TR	WTI	Sisco/Smith
CONT 200 14	Weld App: Nat'l Standard Welding 10/16/18 - 11/15/18	1.00	5:00 PM	9:00 PM	TR	WTI	Sisco/Smith



# COFFEYVILLE TECHNICAL CAMPUS

## CALENDAR: SPRING

Nov 5	Enrollment for the 2019 Spring Session begins
<b>Dec 20 - Jan 2</b>	<b>MAIN CAMPUS CLOSED</b>
<b>Dec 20- Jan 2</b>	<b>TECHNICAL CAMPUSES CLOSED</b>
Jan 3	College Opens for Spring Semester
Jan 3	Bookstore Opens, Charges Begin
Jan 4-25	Student ID's, No Charge (8:00am - 5:00pm M-F in the Student Success Center)
Jan 7, 9:00am	Residence Halls Reopen

**ENROLLED STUDENTS WHO HAVE NOT FINALIZED ENROLLMENT  
BY 5:00 P.M. THE DAY PRIOR TO CLASSES STARTING  
WILL BE DROPPED FROM ALL COURSES.**

Jan 9	Spring Courses Begin - All Campuses
Jan 16	Last Day for Book Refund with Receipt
<b>Jan 21</b>	<b>MARTIN LUTHER KING DAY - COLLEGE CLOSED</b>
Jan 23	Last Day for Full Book Refund at the Bookstore with Drop Slip & Receipt
Jan 29	\$10.00 Processing Charge Assessed for All New Student IDs
March 7	Cap & Gown Measurements
March 9	Residence Halls Close for Spring Break
<b>March 11-15</b>	<b>SPRING BREAK - COLLEGE CLOSED</b>
March 17	Residence Halls Reopen
April 5	Last Day to Drop Courses
April 8	Enrollment for the 2019 Summer/Fall Sessions Begins
<b>April 19</b>	<b>GOOD FRIDAY - COLLEGE CLOSED</b>
May 8-10	Book Buy Back at the Bookstore
May 11	Graduation
May 11, 3:00pm	Residence Halls Close
May 21	Technical Courses End
<b>May 27</b>	<b>MEMORIAL DAY - COLLEGE CLOSED</b>

# COFFEYVILLE TECHNICAL CAMPUS

## Spring 2019

### 1/9/19 - 5/21/19

## AUTO COLLISION REPAIR TECHNOLOGY

### FIRST SEMSTER

Course No.	Course Title	Cr	Begins	Ends	Days	Room	Instructor
ACRT 105 12	Collision Repair Safety	1.00	7:30 AM	7:45 AM	MTWRF	TECH 410	D Johnson
ACRT 107 12	Shop Math and Communications I	2.00	11:10 AM	11:45 AM	MTWRF	TECH 202	B Robison
ACRT 110 12	Paint & Refinishing I	3.00	7:55 AM	8:50 AM	MTWRF	TECH 410	D Johnson
ACRT 120 12	Non-Structural A & D Repair 1	4.00	9:00 AM	10:15 AM	MTWRF	TECH 410	D Johnson
ACRT 125 12	Structural A & D Repair 1	2.00	10:25 AM	11:00 AM	MTWRF	TECH 410	D Johnson
ACRT 130 12	Paint & Refinishing 2	3.00	1:15 PM	2:25 PM	MTWRF	TECH 410	D Johnson
ACRT 135 12	Non-Structural A & D Repair 2	4.00	2:35 PM	4:05 PM	MTWRF	TECH 410	D Johnson
ACRT 140 12	Structural A & D Repair 2	2.00	4:15 PM	4:50 PM	MTWRF	TECH 410	D Johnson
ACRT 145 12	Mechanical & Electrical	3.00	11:55 AM	1:05 PM	MTWRF	TECH 410	D Johnson

### FIRST SEMSTER HALF-TIME (AFTERNOON)

Course No.	Course Title	Cr	Begins	Ends	Days	Room	Instructor
ACRT 105 14	Collision Repair Safety	1.00	12:00 PM	12:15 PM	MTWRF	TECH 410	D Johnson
ACRT 107 14	Shop Math and Communications I	2.00	3:40 PM	4:15 PM	MTWRF	TECH 410	B Robison
ACRT 110 14	Paint & Refinishing I	3.00	12:25 PM	1:20 PM	MTWRF	TECH 410	D Johnson
ACRT 120 14	Non-Structural A & D Repair 1	4.00	1:30 PM	2:45 PM	MTWRF	TECH 410	D Johnson
ACRT 125 14	Structural A & D Repair 1	2.00	2:55 PM	3:30 PM	MTWRF	TECH 410	D Johnson

### RETURNING

Course No.	Course Title	Cr	Begins	Ends	Days	Room	Instructor
ACRT 150 12	Paint & Refinishing 3	3.00	8:15 AM	9:25 AM	MTWRF	TECH 410	D Johnson
ACRT 155 12	Non-Structural A & D Repair 3	4.00	9:35 AM	11:25 AM	MTWRF	TECH 410	D Johnson
ACRT 160 12	Structural A & D Repair 3	3.00	12:00 PM	1:10 PM	MTWRF	TECH 410	D Johnson
ACRT 170 12	Paint & Refinishing 4	4.00	1:20 PM	3:10 PM	MTWRF	TECH 410	D Johnson
ACRT 180 12	Non-Structural A&D Repair 4	5.00	3:20 PM	4:50 PM	MTWRF	TECH 410	D Johnson
ACRT 190 12	Structural A & D Repair 4	3.00	5:00 PM	6:10 PM	MTWRF	TECH 410	D Johnson
ACRT 217 12	Shop Math & Communications II	2.00	7:30 AM	8:05 AM	MTWRF	TECH 202	B Robison

### RETURNING HALF-TIME (MORNING)

Course No.	Course Title	Cr	Begins	Ends	Days	Room	Instructor
ACRT 130 14	Paint & Refinishing 2	3.00	8:50 AM	10:00 AM	MTWRF	TECH 410	D Johnson
ACRT 135 14	Non-Structural A & D Repair 2	4.00	10:10 AM	11:40 AM	MTWRF	TECH 410	D Johnson
ACRT 140 14	Structural A & D Repair 2	2.00	11:50 AM	12:25 PM	MTWRF	TECH 410	D Johnson
ACRT 145 14	Mechanical & Electrical	3.00	7:30 AM	8:40 AM	MTWRF	TECH 410	D Johnson

## AUTOMOTIVE SERVICE TECHNOLOGY

Course No.	Course Title	Cr	Begins	Ends	Days	Room	Instructor
ASTC 107 12	Shop Math & Comm I	2.00	10:05 AM	10:35 AM	MTWRF	TECH 202	B Robison
ASTC 122 12	Engine Performance 1	3.00	7:00 AM	7:55 AM	MTWRF	TECH 108	R Shafer
ASTC 134 12	Steering & Suspension 1	3.00	11:00 AM	11:55 AM	MTWRF	TECH 108	R Shafer
ASTC 217 12	Shop Math & Communications II	2.00	10:05 AM	10:35 AM	MTWRF	TECH 202	B Robison
ASTC 233 12	Steering & Suspension 2	5.00	12:05 PM	1:35 PM	MTWRF	TECH 108	R Shafer
ASTC 280 12	Engine Performance 2	6.00	8:05 AM	9:55 AM	MTWRF	TECH 108	R Shafer
ASTC 296 12	Automotive Heating & Air Cond	5.00	1:45 PM	3:20 PM	MTWRF	TECH 108	R Shafer

# CONSTRUCTION TECHNOLOGY

## FIRST SEMESTER

Course No.	Course Title	Cr	Begins	Ends	Days	Room	Instructor
CNST 103 12	Introductory Craft Skill	3.00	7:30 AM	8:35 AM	MTWRF	CTC	C Ray
CNST 112 12	Carpentry Basics	4.00	9:10 AM	10:30 AM	MTWRF	CTC	C Ray
CNST 116 12	Blueprints & Building Codes	4.00	10:40 AM	12:00 PM	MTWRF	CTC	C Ray
CNST 118 12	Safety Orientation OSHA 10	1.00	8:45 AM	9:00 AM	MTWRF	CTC	C Ray
CNST 190 12	Survey & Elevations	3.00	12:10 PM	1:15 PM	MTWRF	CTC	C Ray
CNST 210 12	Drywall, Insulation, & Ventilation	4.00	1:25 PM	2:45 PM	MTWRF	CTC	C Ray
CNST 230 12	Exterior Construction	5.00	2:55 PM	4:40 PM	MTWRF	CTC	C Ray

## RETURNING

Course No.	Course Title	Cr	Begins	Ends	Days	Room	Instructor
CNST 107 12	Shop Math & Communications I	2.00	11:25 AM	12:00 PM	MTWRF	TECH 202	B Robison
CNST 126 12	Floors, Walls & Ceiling Framing	4.00	7:30 AM	8:45 AM	MTWRF	CTC	C Ray
CNST 136 12	Roof Framing	3.00	8:55 AM	10:00 AM	MTWRF	CTC	C Ray
CNST 151 12	Windows, Doors, & Stairs	3.00	10:10 AM	11:15 AM	MTWRF	CTC	C Ray
CNST 159 12	Painting, Finishing & Interior Dsgn	4.00	12:10 PM	1:25 PM	MTWRF	CTC	C Ray
CNST 180 12	Interior Construction	4.00	1:35 PM	3:50 PM	MTWRF	CTC	C Ray
CNST 221 12	Cabinet Installation & Fabrication	4.00	4:00 PM	5:15 PM	MTWRF	CTC	C Ray

## RETURNING PART-TIME (MORNING)

Course No.	Course Title	Cr	Begins	Ends	Days	Room	Instructor
CNST 190 14	Survey & Elevations	3.00	7:30 AM	8:35 AM	MTWRF	CTC	C Ray
CNST 210 14	Drywall, Insulation, & Ventilation	4.00	8:45 AM	10:05 AM	MTWRF	CTC	C Ray
CNST 230 14	Exterior Construction	5.00	10:15 AM	12:00 PM	MTWRF	CTC	C Ray

## RETURNING PART-TIME (AFTERNOON)

Course No.	Course Title	Cr	Begins	Ends	Days	Room	Instructor
CNST 107 14	Shop Math & Communications I	2.00	4:00 PM	4:35 PM	MTWRF	TECH 202	B Robison
CNST 126 14	Floors, Walls & Ceiling Framing	4.00	12:00 PM	1:15 PM	MTWRF	CTC	C Ray
CNST 136 14	Roof Framing	3.00	1:25 PM	2:30 PM	MTWRF	CTC	C Ray
CNST 151 14	Windows, Doors, & Stairs	3.00	2:45 PM	3:50 PM	MTWRF	CTC	C Ray

# ELECTRICAL TECHNOLOGY

Course No.	Course Title	Cr	Begins	Ends	Days	Room	Instructor
ELEC 214 12	Electronics for Electrician	4.00	7:30 AM	8:35 AM	MTWRF	TECH 104A	T Kuhn
ELEC 225 12	Motor Controls	6.00	1:15 PM	3:10 PM	MTWRF	TECH 104A	T Kuhn
ELEC 226 12	Programmable Logic Controllers	6.00	8:45 AM	10:40 AM	MTWRF	TECH 104A	T Kuhn
ELEC 228 12	Commercial Wiring I	4.00	12:00 PM	1:05 PM	MTWRF	TECH 104A	T Kuhn
ELEC 240 12	Print Reading	2.00	10:50 AM	11:25 AM	MTWRF	TECH 104A	T Kuhn

# INFORMATION SYSTEMS TECHNOLOGY

## FIRST SEMESTER

Course No.	Course Title	Cr	Begins	Ends	Days	Room	Instructor
NETW 100 12	Dsktp Hrdwr & Op Sys I	6.00	8:00 AM	9:55 AM	MTWRF	TECH 205	S Parker
NETW 105 12	Desktop Hrdwr & Op Systems II	6.00	10:05 AM	12:00 PM	MTWRF	TECH 205	S Parker
NETW 160 12	Networking Technology	6.00	12:30 PM	2:25 PM	MTWRF	TECH 205	S Parker
NETW 170 12	Introduction to Linux	6.00	2:35 PM	4:30 PM	MTWRF	TECH 205	S Parker

**RETURNING**

<b>Course No.</b>	<b>Course Title</b>	<b>Cr</b>	<b>Begins</b>	<b>Ends</b>	<b>Days</b>	<b>Room</b>	<b>Instructor</b>
NETW 125 12	Server Administration I	6.00	8:00 AM	9:55 AM	MTWRF	TECH 205	S Parker
NETW 130 12	Server Administration II	6.00	10:05 AM	12:00 PM	MTWRF	TECH 205	S Parker
NETW 253 12	Infrmtn Assrnce & Cmpttr Scrtcy I	6.00	12:30 PM	2:25 PM	MTWRF	TECH 205	S Parker
NETW 263 12	Infrmtn Assr & Computer Sec II	6.00	2:35 PM	4:30 PM	MTWRF	TECH 205	S Parker

**HEALTH APPLICATIONS**

<b>Course No.</b>	<b>Course Title</b>	<b>Cr</b>	<b>Begins</b>	<b>Ends</b>	<b>Days</b>	<b>Room</b>	<b>Instructor</b>
EMTP 115 02	CPR for Healthcare Providers 1/09/19 - 1/09/19	0.50	12:00 PM	7:00 PM	W	TECH 212	N Stephens
CNAD 105 12	Certified Nurse Aide (CNA) 1/14/19 - 3/06/19 <i>This course requires clinical time with a Nursing Home Facility, which will be on Saturdays, March 2 &amp; 9 from 7:00am-3:30pm. Students must be at least 16 years of age to enroll in the CNA class. Students enrolling in CNA must also enroll in a CPR class or provide proof of an active Heartsaver CPR certification.</i>	5.00	12:00 PM	6:00 PM	MW	TECH 212	N Stephens
EMTP 115 03	CPR for Healthcare Providers 2/12/19 - 2/14/19	0.50	5:00 PM	9:00 PM	TR	TECH 212	N Stephens
CMAD 115 12	Certified Medication Aide (CMA) 2/19/19 - 4/30/19 <i>This course requires clinical time with a Nursing Home Facility, which will be on Saturdays, April 20 &amp; 27, from 7:00am-3:30pm. Students enrolling in CMA must also enroll in a CPR class or provide proof of an active Heartsaver CPR certification.</i>	4.00	5:00 PM	9:00 PM	TR	TECH 212	N Stephens
EMTP 115 04	CPR for Healthcare Providers 3/18/19 - 3/20/19	0.50	4:00 PM	9:00 PM	MW	TECH 212	N Stephens
CNAD 105 14	Certified Nurse Aide 3/25/19 -5/22/19 <i>This course requires clinical time with a Nursing Home Facility, which will be on Friday &amp; Saturday, May 17 &amp; 18 from 7:00am-3:30pm. Students must be at least 16 years of age to enroll in the CNA class. Students enrolling in CNA must also enroll in a CPR class or provide proof of an active Heartsaver CPR certification.</i>	5.00	4:00 PM	9:00 PM	MW	TECH 212	N Stephens
CONT 230 02	CNA Update 3/23/19 - 3/23/19	0.50	7:00 AM	5:30 PM	S	TECH 212	N Stephens
CONT 230 04	CMA Recertification 4/13/19 - 4/13/19	0.50	7:00 AM	5:30 PM	S	TECH 212	N Stephens
EMTP 115 01	CPR for Healthcare Providers 1/10/19 - 1/11/19	1.00	10:00 AM	4:30 PM	RF	TECH 201	W Simmons

**MEDICAL ASSISTANT**

<b>Course No.</b>	<b>Course Title</b>	<b>Cr</b>	<b>Begins</b>	<b>Ends</b>	<b>Days</b>	<b>Room</b>	<b>Instructor</b>
MEDA 129 01	Phlebotomy Clinical Applications 1/09/19 - 5/10/19 - <i>This course is for Medical Assisting Students Only</i>	3.00	*appointment			TECH 201	S Newman
MEDA 155 01	Patient Care I 1/22/19 - 2/26/19 - <i>This class will also meet on Fridays from 10:15-1:15 beginnig January 25th.</i>	4.00	9:00 AM	1:30 PM	TR	TECH 206	W Simmons
MEDA 185 01	Emergency Preparedness 1/15/19 - 1/18/19	1.00	9:00 AM	1:45 PM	TRF	TECH 206	W Simmons
MEDA 240 01	Clinical Laboratory Diagnostics 1/10/19 - 5/10/19	5.00	2:10 PM	4:40 PM	TR	TECH 206	S Newman
MEDA 250 01	Pharmacology for Allied Health 4/12/19 - 5/16/19	3.00	9:00 AM	11:45 AM	TRF	TECH 206	W Simmons
MEDA 251 01	Pharmacology Administration 4/12/19 - 5/16/19	1.00	12:00 PM	1:30 PM	TRF	TECH 206	W Simmons
MEDA 255 01	Patient Care II 2/28/19 - 4/11/19 - <i>This class will also meet on Fridays from 10:15-1:15 beginnig March 1st.</i>	4.00	9:00 AM	1:30 PM	TR	TECH 206	W Simmons

## MEDICAL LABORATORY TECHNICIAN

A student must be accepted into the Medical Laboratory Technician Program to enroll in Medical Laboratory Technician courses. Please contact Susan Newman to enroll in Medical Laboratory Technician courses, 620-252-7550 ext 13.

## NURSING

A student must be accepted into the Nursing Program to enroll in the Nursing courses. Please contact Heather Pollet, Director of Nursing, to enroll in the Nursing courses. 620-252-7550, ext. 32.

## PARAMEDIC/ EMERGENCY SERVICES EDUCATION

### EMERGENCY MEDICAL TECHNICIAN (EMT) IN COFFEYVILLE

Course No.	Course Title	Cr	Begins	Ends	Days	Room	Instructor
EMTP 115 05	CPR for Healthcare Providers 1/14/19 - 1/16/19	1.00	6:00 PM	10:00 PM	MW	TECH 210	C Goff
EMTP 136 01	Emergency Medical Technician 1/18/19 - 5/20/19	11.00	6:00 PM	10:00 PM	MWF	TECH 210	C Goff
EMTP 116 01	Emergency Defensive Driving 4/27/19 - 5/04/19	1.00	8:00 AM	5:00 PM	S	TECH 210	R McDaniel

### EMERGENCY MEDICAL TECHNICIAN (EMT) IN IOLA/ALLEN CC

Course No.	Course Title	Cr	Begins	Ends	Days	Room	Instructor
EMTP 115 06	CPR for Healthcare Providers 1/14/19 - 1/16/19	1.00	6:00 PM	10:00 PM	MW	IOLA	A Hill
EMTP 136 02	Emergency Medical Technician 1/18/19 - 5/20/19	11.00	6:00 PM	10:00 PM	MWF	IOLA	A Hill

### PARAMEDIC (EMT-P)

A student must be accepted into the Paramedic Program to enroll in Paramedic courses. Please contact Randy McDaniel, EMT/P Program Instructor/Coordinator, to enroll in Paramedic Courses, 620-252-7550, ext 20.

## PHLEBOTOMY

Course No.	Course Title	Cr	Begins	Ends	Days	Room	Instructor
MEDA 128 01	Phlebotomy Essentials 1/09/19 - 3/20/19	3.00	5:30 PM	9:30 PM	W	TECH 206	S Newman
MEDA 129 02	Phlebotomy Clinical Applications 3/20/19 - 5/01/19 <i>This course is for Phlebotomy Students Only.</i>	3.00	*appointment			TECH 206	S Newman

## PRECISION MACHINING TECHNOLOGY

### FIRST SEMESTER FULL TIME

Course No.	Course Title	Cr	Begins	Ends	Days	Room	Instructor
MACH 106 12	Machining I	3.00	3:40 PM	5:10 PM	MTWRF	TECH 104	J Ruark
MACH 107 12	Shop Math and Communications I	2.00	9:15 PM	9:50 PM	MTWRF	TECH 202	B Robison
MACH 110 12	Safety (OSHA 10)	1.00	12:00 PM	12:15 PM	MTWRF	TECH 104	J Ruark
MACH 116 12	Print Reading	3.00	1:35 PM	3:05 PM	MTWRF	TECH 104	J Ruark
MACH 120 12	Precision Measurements & Gauges	2.00	8:30 PM	9:05 PM	MTWRF	TECH 104	J Ruark
MACH 131 12	Bench Work	1.00	1:10 PM	1:25 PM	MTWRF	TECH 104	J Ruark
MACH 140 12	Math for Manufacturing	3.00	7:45 PM	8:20 PM	MTWRF	TECH 104	J Ruark
MACH 145 12	Machining II	3.00	6:00 PM	7:35 PM	MTWRF	TECH 104	J Ruark
MACH 160 12	Metallurgy	1.00	3:15 PM	3:30 PM	MTWRF	TECH 104	J Ruark
MACH 180 12	Workplace Ethics	2.00	12:25 PM	1:00 PM	MTWRF	TECH 104	J Ruark

**SECOND SEMESTER FULL TIME**

<b>Course No.</b>	<b>Course Title</b>	<b>Cr</b>	<b>Begins</b>	<b>Ends</b>	<b>Days</b>	<b>Room</b>	<b>Instructor</b>
MACH 135 12	Machine Tool Processes	1.00	12:25 PM	12:40 PM	MTWRF	TECH 104	J Ruark
MACH 170 12	Quality Control & Inspection	1.00	12:00 PM	12:15 PM	MTWRF	TECH 104	J Ruark
MACH 190 12	Computer Aided Design I	2.00	12:50 PM	1:25 PM	MTWRF	TECH 104	J Ruark
MACH 205 12	Precision Machining III	6.00	2:20 PM	4:10 PM	MTWRF	TECH 104	J Ruark
MACH 215 12	Precision Machining IV	6.00	5:00 PM	6:50 PM	MTWRF	TECH 104	J Ruark
MACH 230 12	CNC Operations	3.00	1:35 PM	2:10 PM	MTWRF	TECH 104	J Ruark
MACH 245 12	Precision Machining V	6.00	7:00 PM	8:50 PM	MTWRF	TECH 104	J Ruark

**FIRST SEMESTER PART TIME (AFTERNOON)**

<b>Course No.</b>	<b>Course Title</b>	<b>Cr</b>	<b>Begins</b>	<b>Ends</b>	<b>Days</b>	<b>Room</b>	<b>Instructor</b>
MACH 106 14	Machining I	3.00	7:45 PM	9:20 PM	MTWRF	TECH 104	J Ruark
MACH 110 14	Safety (OSHA 10)	1.00	4:00 PM	4:15 PM	MTWRF	TECH 104	J Ruark
MACH 116 14	Print Reading	3.00	5:35 PM	7:10 PM	MTWRF	TECH 104	J Ruark
MACH 131 14	Bench Work	1.00	5:10 PM	5:25 PM	MTWRF	ECH 104	J Ruark
MACH 160 14	Metallurgy	1.00	7:20 PM	7:35 PM	MTWRF	TECH 104	J Ruark
MACH 180 14	Workplace Ethics	2.00	4:25 PM	5:00 PM	MTWRF	TECH 104	J Ruark

# WELDING TECHNOLOGY

**FIRST SEMESTER**

<b>Course No.</b>	<b>Course Title</b>	<b>Cr</b>	<b>Begins</b>	<b>Ends</b>	<b>Days</b>	<b>Room</b>	<b>Instructor</b>
WELD 110 12	Welding Safety OSHA 10	1.00	7:30 AM	7:45 AM	MTWR	WTI	S Hammer
WELD 111 12	Oxy Acetylene and Safety	3.00	7:55 AM	9:00 AM	MTWRF	WTI	S Hammer
WELD 120 12	Shielded Metal Arc Welding	3.00	9:10 AM	10:10 AM	MTWRF	WTI	S Hammer
WELD 140 12	Shielded Metal Arc Welding II	3.00	10:20 AM	11:20 AM	MTWRF	WTI	S Hammer
WELD 160 12	Shielded Metal Arc Welding III	5.00	12:00 PM	1:45 PM	MTWRF	WTI	S Hammer
WELD 181 12	Gas Metal Arc Welding	3.00	1:55 PM	2:55 PM	MTWRF	WTI	S Hammer
WELD 231 12	Gas Metal Arc Welding II	5.00	3:05 PM	4:45 PM	MTWRF	WTI	S Hammer

**SECOND SEMESTER**

<b>Course No.</b>	<b>Course Title</b>	<b>Cr</b>	<b>Begins</b>	<b>Ends</b>	<b>Days</b>	<b>Room</b>	<b>Instructor</b>
WELD 190 12	Gas Tungsten Arc Welding	3.00	11:30 AM	12:30 PM	MTWRF	WTI	S Hammer
WELD 210 12	Gas Tungsten Arc Welding II (GTAW)	3.00	12:40 PM	1:40 PM	MTWRF	WTI	S Hammer
WELD 220 12	Gas Tungsten Arc Welding III	6.00	1:50 PM	3:50 PM	MTWRF	WTI	S Hammer
WELD 222 12	Fluxed Cored Arc Welding I	5.00	7:30 AM	9:15 AM	MTWRF	WTI	S Hammer
WELD 232 12	Fluxed Cored Arc Welding II	5.00	9:25 AM	11:10 AM	MTWRF	WTI	S Hammer
WELD 242 12	Pipe Layout & Blueprint Reading	1.00	4:00 PM	4:25 PM	MTWRF	WTI	S Hammer

# EVENING COURSES

<b>Course No.</b>	<b>Course Title</b>	<b>Cr</b>	<b>Begins</b>	<b>Ends</b>	<b>Days</b>	<b>Room</b>	<b>Instructor</b>
CONT 100 12	Basic Collision Repair 2/01/19 - 4/12/19	1.00	6:00 PM	10:00 PM	F	TECH 410	J Young
CONT 150 12	Introduction to Woods 2/04/19 - 4/15/19	1.00	6:00 PM	9:00 PM	M	CTC	C Ray
CONT 200 12	Weld App: Nat'l Standard Welding 1/15/19 - 2/14/19	1.00	5:00 PM	9:00 PM	TR	WTI	Sisco/Smith
CONT 200 14	Weld App: Nat'l Standard Welding 3/19/19 - 4/18/19	1.00	5:00 PM	9:00 PM	TR	WTI	Sisco/Smith
HVAC 101 12	Heat and Air Applications 2/12/19 - 4/18/19	4.00	5:30 PM	9:30 PM	TR	CTC	C Ray

**COFFEYVILLE COMMUNITY COLLEGE**  
**COLUMBUS**  
**TECHNICAL CAMPUS**

# COLUMBUS TECHNICAL CAMPUS CALENDAR: FALL

April 9, 2018	Enrollment for the 2018 Summer / Fall Sessions begins
July 27	Summer II Session Ends
Aug 6	Bookstore Charges Begin
Aug 6-7	Summer II Book Buy Back: Bookstore
Aug 6 - Sept 3	Student ID's No Charge (8:00am - 5:00pm M-F in the Student Success Center)

**ENROLLED STUDENTS WHO HAVE NOT FINALIZED ENROLLMENT  
BY 5:00 P.M. THE DAY PRIOR TO CLASSES STARTING  
WILL BE DROPPED FROM ALL COURSES.**

Aug 15	Fall Courses Begin - All Campuses
Aug 22	Last Day for Book Refund with Receipt
Aug 29	Last Day for Full Book Refund at the Bookstore with Drop Slip & Receipt
<b>Sept 3</b>	<b>LABOR DAY, COLLEGE CLOSED</b>
Sept 5	\$10 Processing Charge Assessed for All New Student ID's
Nov 2	Last Day to Drop 16 Week Courses
Nov 5	Enrollment for Spring 2019 Session Begins
<b>Nov 21-23</b>	<b>THANKSGIVING BREAK - COLLEGE CLOSED</b>
Dec 4-6	Book Buy Back at the Bookstore
Dec 19	Technical Courses End
<b>Dec 20 - Jan 2</b>	<b>MAIN CAMPUS CLOSED</b>
<b>Dec 20- Jan 2</b>	<b>TECHNICAL CAMPUSES CLOSED</b>



# COLUMBUS TECHNICAL CAMPUS

Fall 2018

8/15/18 - 12/19/18

## AUTO COLLISION REPAIR TECHNOLOGY

Course No.	Course Title	Cr	Begins	Ends	Days	Room	Instructor
ACRT 105 11	Collision Repair Safety	1.00	10:45 AM	11:00 AM	MTWRF	T&I 202	H Daniels
ACRT 107 11	Shop Math and Communications I	2.00	10:05 AM	10:35 AM	MTWRF	ADM	K Soper
ACRT 110 11	Paint & Refinishing I	3.00	7:45 AM	8:40 AM	MTWRF	T&I 202	H Daniels
ACRT 120 11	Non-Structural A & D Repair 1	4.00	11:35 AM	12:50 PM	MTWRF	T&I 202	H Daniels
ACRT 125 11	Structural A & D Repair 1	2.00	6:25 AM	6:55 AM	MTWRF	T&I 202	H Daniels
ACRT 130 11	Paint & Refinishing 2	3.00	8:50 AM	9:55 AM	MTWRF	T&I 202	H Daniels
ACRT 135 11	Non-Structural A & D Repair 2	4.00	1:00 PM	2:25 PM	MTWRF	T&I 202	H Daniels
ACRT 140 11	Structural A & D Repair 2	2.00	7:05 AM	7:35 AM	MTWRF	T&I 202	H Daniels
ACRT 145 11	Mechanical & Electrical	3.00	2:35 PM	3:40 PM	MTWRF	T&I 202	H Daniels

## AUTOMOTIVE SERVICE TECHNOLOGY

Course No.	Course Title	Cr	Begins	Ends	Days	Room	Instructor
ASTC 107 11	Shop Math & Comm I	2.00	3:10 PM	3:40 PM	MTWRF	ADM	K Soper
ASTC 109 11	Brakes 1	3.00	12:00 PM	1:05 PM	MTWRF	T&I 201	J Phillips
ASTC 134 11	Steering & Suspension 1	3.00	8:25 AM	9:30 AM	MTWRF	T&I 201	J Phillips
ASTC 148 11	Engine Repair	5.00	6:30 AM	8:15 AM	MTWRF	T&I 201	J Phillips
ASTC 233 11	Steering & Suspension 2	5.00	9:40 AM	11:25 AM	MTWRF	T&I 201	J Phillips
ASTC 237 11	Brakes 2	5.00	1:15 PM	3:00 PM	MTWRF	T&I 201	J Phillips

## CONSTRUCTION TECHNOLOGY

Course No.	Course Title	Cr	Begins	Ends	Days	Room	Instructor
CNST 103 11	Introductory Craft Skill	3.00	6:30 AM	7:35 AM	MTWRF	CTN 120	K Hunt
CNST 112 11	Carpentry Basics	4.00	8:10 AM	9:25 AM	MTWRF	CTN 120	K Hunt
CNST 116 11	Blueprints & Building Codes	4.00	9:35 AM	10:50 AM	MTWRF	CTN 120	K Hunt
CNST 118 11	Safety Orientation OSHA 10	1.00	7:45 AM	8:00 AM	MTWRF	CTN 120	K Hunt
CNST 190 11	Survey & Elevations	3.00	11:10 AM	12:15 PM	MTWRF	CTN 120	K Hunt
CNST 210 11	Drywall, Insulation, & Ventilation	4.00	12:25 PM	1:40 PM	MTWRF	CTN 120	K Hunt
CNST 230 11	Exterior Construction	5.00	1:50 PM	3:35 PM	MTWRF	CTN 120	K Hunt

## HEALTH APPLICATIONS

Course No.	Course Title	Cr	Begins	Ends	Days	Room	Instructor
CNAD 105 11	Certified Nurse Aide (CNA) 8/21/18 - 10/10/18 - class will meet from 3:00-7:00pm on October 10.	5.00	3:00 PM	9:00 PM	TW	PITTSBURG	P Franklin
CNAD 105 OF	Certified Nurse Aide (CNA) 10/10/18 - 12/15/18 Clinicals will be from 3:30-9:00pm on Wednesdays, October 17 - December 12 in Frontenac.	5.00				ONLINE	P Franklin
CMAD 115 11	Certified Medication Aide 9/17/18 - 10/29/18	4.00	3:00 PM	9:15 PM	MR	GIRARD	P Franklin
CONT 230 OT	CMA Recertification 12/10/18 - 12/22/18	0.50				ONLINE	P Franklin
HHAD 120 OT	Home Health Aide 9/10/18 - 9/22/18 - Orientation / Reading Test will be at 3:00pm on Monday, September 10th in Girard.	1.00				ONLINE	P Franklin

# WELDING TECHNOLOGY

## First Semester

Course No.	Course Title	Cr	Begins	Ends	Days	Room	Instructor
WELD 110 11	Welding Safety OSHA 10	1.00	6:30 AM	6:45 AM	MTWRF	CTN 100	T Madl
WELD 111 11	Oxy Acetylene and Safety	3.00	6:55 AM	8:00 AM	MTWRF	CTN 100	T Madl
WELD 120 11	Shielded Metal Arc Welding	3.00	8:10 AM	9:10 AM	MTWRF	CTN 100	T Madl
WELD 140 11	Shielded Metal Arc Welding II	3.00	9:20 AM	10:20 AM	MTWRF	CTN 100	T Madl
WELD 160 11	Shielded Metal Arc Welding III	5.00	10:30 AM	12:15 PM	MTWRF	CTN 100	T Madl
WELD 181 11	Gas Metal Arc Welding	3.00	12:45 PM	1:45 PM	MTWRF	CTN 100	T Madl
WELD 231 11	Gas Metal Arc Welding II	5.00	1:55 PM	3:35 PM	MTWRF	CTN 100	T Madl

## Returning

Course No.	Course Title	Cr	Begins	Ends	Days	Room	Instructor
WELD 190 11	Gas Tungsten Arc Welding	3.00	10:35 AM	11:35 AM	MTWRF	CTN 100	T Madl
WELD 210 11	Gas Tungsten Arc Welding II (GTAW)	3.00	11:50 AM	12:50 PM	MTWRF	CTN 100	T Madl
WELD 220 11	Gas Tungsten Arc Welding III	6.00	1:00 PM	3:00 PM	MTWRF	CTN 100	T Madl
WELD 222 11	Fluxed Cored Arc Welding I	5.00	6:55 AM	8:35 AM	MTWRF	CTN 100	T Madl
WELD 232 11	Fluxed Cored Arc Welding II	5.00	8:45 AM	10:25 AM	MTWRF	CTN 100	T Madl
WELD 242 11	Pipe Layout & Blueprint Reading	1.00	3:10 PM	3:35 PM	MTWRF	CTN 100	T Madl

# COLUMBUS TECHNICAL CAMPUS CALENDAR: SPRING

Nov 5	Enrollment for the 2019 Spring Session begins
<b>Dec 20 - Jan 2</b>	<b>MAIN CAMPUS CLOSED</b>
<b>Dec 20- Jan 2</b>	<b>TECHNICAL CAMPUSES CLOSED</b>
Jan 3	College Opens for Spring Semester
Jan 3	Bookstore Opens, Charges Begin
Jan 4-27	Student ID's, No Charge (8:00am - 5:00pm M-F in the Student Success Center)

**ENROLLED STUDENTS WHO HAVE NOT FINALIZED ENROLLMENT  
BY 5:00 P.M. THE DAY PRIOR TO CLASSES STARTING  
WILL BE DROPPED FROM ALL COURSES.**

Jan 9	Spring Courses Begin - All Campuses
Jan 16	Last Day for Book Refund with Receipt
<b>Jan 21</b>	<b>MARTIN LUTHER KING DAY - COLLEGE CLOSED</b>
Jan 23	Last Day for Full Book Refund at the Bookstore with Drop Slip & Receipt
Jan 29	\$10.00 Processing Charge Assessed for All New Student IDs
March 7	Cap & Gown Measurements
<b>March 11-15</b>	<b>SPRING BREAK - COLLEGE CLOSED</b>
April 5	Last Day to Drop Courses
April 8	Enrollment for the 2019 Summer/Fall Sessions Begins
<b>April 19</b>	<b>GOOD FRIDAY - COLLEGE CLOSED</b>
May 8-10	Book Buy Back at the Bookstore
May 11	Graduation
May 21	Technical Courses End
<b>May 27</b>	<b>MEMORIAL DAY - COLLEGE CLOSED</b>

# COLUMBUS TECHNICAL CAMPUS

## Spring 2019

### 1/9/19 - 5/21/19

## AUTO COLLISION REPAIR TECHNOLOGY

Course No.	Course Title	Cr	Begins	Ends	Days	Room	Instructor
ACRT 150 11	Paint & Refinishing 3	3.00	9:00 AM	10:05 AM	MTWRF	T&I 202	H Daniels
ACRT 155 11	Non-Structural A & D Repair 3	4.00	12:00 PM	1:25 PM	MTWRF	T&I 202	H Daniels
ACRT 160 11	Structural A & D Repair 3	3.00	6:30 AM	7:35 AM	MTWRF	T&I 202	H Daniels
ACRT 170 11	Paint & Refinishing 4	4.00	10:15 AM	11:40 AM	MTWRF	T&I 202	H Daniels
ACRT 180 11	Non-Structural A&D Repair 4	5.00	1:35 PM	3:00 PM	MTWRF	T&I 202	H Daniels
ACRT 190 11	Structural A & D Repair 4	3.00	7:45 AM	8:50 AM	MTWRF	T&I 202	H Daniels
ACRT 217 11	Shop Math & Communications II	2.00	3:10 PM	3:40 PM	MTWRF	ADM 104	K Soper

## AUTOMOTIVE SERVICE TECHNOLOGY

Course No.	Course Title	Cr	Begins	Ends	Days	Room	Instructor
ASTC 122 11	Engine Performance 1	3.00	12:40 PM	1:35 PM	MTWRF	T&I 201	J Phillips
ASTC 140 11	Electrical 1	3.00	6:45 AM	7:40 AM	MTWRF	T&I 201	J Phillips
ASTC 217 11	Shop Math & Communications II	2.00	12:00 PM	12:30 PM	MTWRF	ADM	K Soper
ASTC 223 11	Electrical 2	6.00	7:50 AM	9:40 AM	MTWRF	T&I 201	J Phillips
ASTC 280 11	Engine Performance 2	6.00	1:45 PM	3:35 PM	MTWRF	T&I 201	J Phillips
ASTC 296 11	Automotive Heating & Air Cond	5.00	9:50 AM	11:35 AM	MTWRF	T&I 201	J Phillips

## CONSTRUCTION TECHNOLOGY

Course No.	Course Title	Cr	Begins	Ends	Days	Room	Instructor
CNST 107 11	Shop Math & Communications I	2.00	10:20 AM	10:55 AM	MTWRF	ADM 104	K Soper
CNST 126 11	Floors, Walls & Ceiling Framing	4.00	6:30 AM	7:45 AM	MTWRF	CTN 120	K Hunt
CNST 136 11	Roof Framing	3.00	7:55 AM	9:00 AM	MTWRF	CTN 120	K Hunt
CNST 151 11	Windows, Doors, & Stairs	3.00	9:10 AM	10:15 AM	MTWRF	CTN 120	K Hunt
CNST 159 11	Painting, Finishing & Interior Dsgn	4.00	11:10 AM	12:25 PM	MTWRF	CTN 120	K Hunt
CNST 180 11	Interior Construction	4.00	12:25 PM	1:40 PM	MTWRF	CTN 120	K Hunt
CNST 221 11	Cabinet Installation & Fabrication	4.00	1:55 PM	3:10 PM	MTWRF	CTN 120	K Hunt

## HEALTH APPLICATIONS

Course No.	Course Title	Cr	Begins	Ends	Days	Room	Instructor
CNAD 105 11	Certified Nurse Aide (CNA) 1/15/19 - 3/06/19 - <i>class will meet from 3:00-7:00pm on March 6.</i>	5.00	3:00 PM	9:15 PM	TW	FRONTENAC	P Franklin
CNAD 105 OF	Certified Nurse Aide (CNA) 3/18/19 - 5/25/19 <i>Clinicals will be from 3:30-9:00pm on Wednesdays, April 3 - May 22 in Pittsburg. Clinicals on May 22 will be from 3:30-7:15pm.</i>	5.00				ONLINE	P Franklin
CMAD 115 11	Certified Medication Aide (CMA) 1/28/19 - 3/11/19 - <i>Orientation / Reading Test will be at 2:30pm, January 28th.</i>	4.00	3:00 PM	9:00 PM	MR	GIRARD	P Franklin
CMAD 115 OF	Certified Medication Aide (CMA) 4/11/19 - 5/25/19 - <i>Orientation / Reading Test will be at 3:00pm, April 11th in Girard Clinicals will be from 3:45-9:00pm on Thursdays, April 25 - May 23 in Girard.</i>	4.00				ONLINE	P Franklin
CONT 230 OT	CMA Recertification 2/04/19 - 2/16/19	0.50				ONLINE	P Franklin

<b>Course No.</b>	<b>Course Title</b>	<b>Cr</b>	<b>Begins</b>	<b>Ends</b>	<b>Days</b>	<b>Room</b>	<b>Instructor</b>
CONT 230 11	CMA Recertification 4/01/19 - 4/08/19	0.50	4:00 PM	9:15 PM	M	GIRARD	P Franklin
CONT 230 OS	CMA Recertification 5/06/19 - 5/18/19	0.50				ONLINE	P Franklin

## WELDING TECHNOLOGY

### First Semester

<b>Course No.</b>	<b>Course Title</b>	<b>Cr</b>	<b>Begins</b>	<b>Ends</b>	<b>Days</b>	<b>Room</b>	<b>Instructor</b>
WELD 110 11	Welding Safety OSHA 10	1.00	6:30 AM	6:45 AM	MTWRF	CTN 100	T Madl
WELD 111 11	Oxy Acetylene and Safety	3.00	6:55 AM	8:00 AM	MTWRF	CTN 100	T Madl
WELD 120 11	Shielded Metal Arc Welding	3.00	8:10 AM	9:10 AM	MTWRF	CTN 100	T Madl
WELD 140 11	Shielded Metal Arc Welding II	3.00	9:20 AM	10:20 AM	MTWRF	CTN 100	T Madl
WELD 160 11	Shielded Metal Arc Welding III	5.00	10:30 AM	12:15 PM	MTWRF	CTN 100	T Madl
WELD 181 11	Gas Metal Arc Welding	3.00	12:45 PM	1:45 PM	MTWRF	CTN 100	T Madl
WELD 231 11	Gas Metal Arc Welding II	5.00	1:55 PM	3:35 PM	MTWRF	CTN 100	T Madl

### Returning

<b>Course No.</b>	<b>Course Title</b>	<b>Cr</b>	<b>Begins</b>	<b>Ends</b>	<b>Days</b>	<b>Room</b>	<b>Instructor</b>
WELD 190 11	Gas Tungsten Arc Welding	3.00	10:35 AM	11:35 AM	MTWRF	CTN 100	T Madl
WELD 210 11	Gas Tungsten Arc Welding II (GTAW)	3.00	11:50 AM	12:50 PM	MTWRF	CTN 100	T Madl
WELD 220 11	Gas Tungsten Arc Welding III	6.00	1:00 PM	3:00 PM	MTWRF	CTN 100	T Madl
WELD 222 11	Fluxed Cored Arc Welding I	5.00	6:55 AM	8:35 AM	MTWRF	CTN 100	T Madl
WELD 232 11	Fluxed Cored Arc Welding II	5.00	8:45 AM	10:25 AM	MTWRF	CTN 100	T Madl
WELD 242 11	Pipe Layout & Blueprint Reading	1.00	3:10 PM	3:35 PM	MTWRF	CTN 100	T Madl