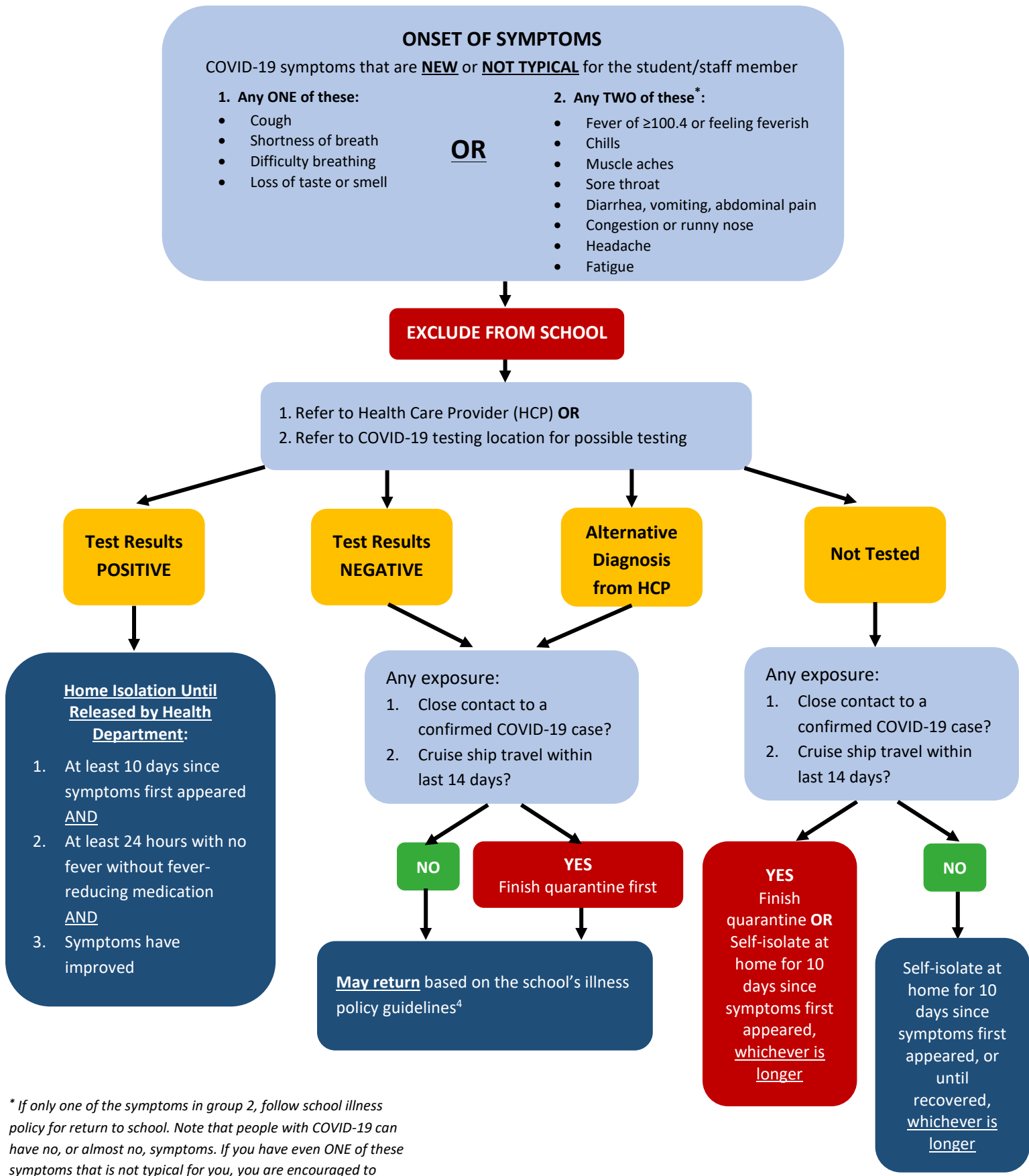


FIGURE 1. FLOWCHART FOR SYMPTOMATIC INDIVIDUALS (STUDENTS OR STAFF MEMBERS)



\* If only one of the symptoms in group 2, follow school illness policy for return to school. Note that people with COVID-19 can have no, or almost no, symptoms. If you have even ONE of these symptoms that is not typical for you, you are encouraged to seek testing.