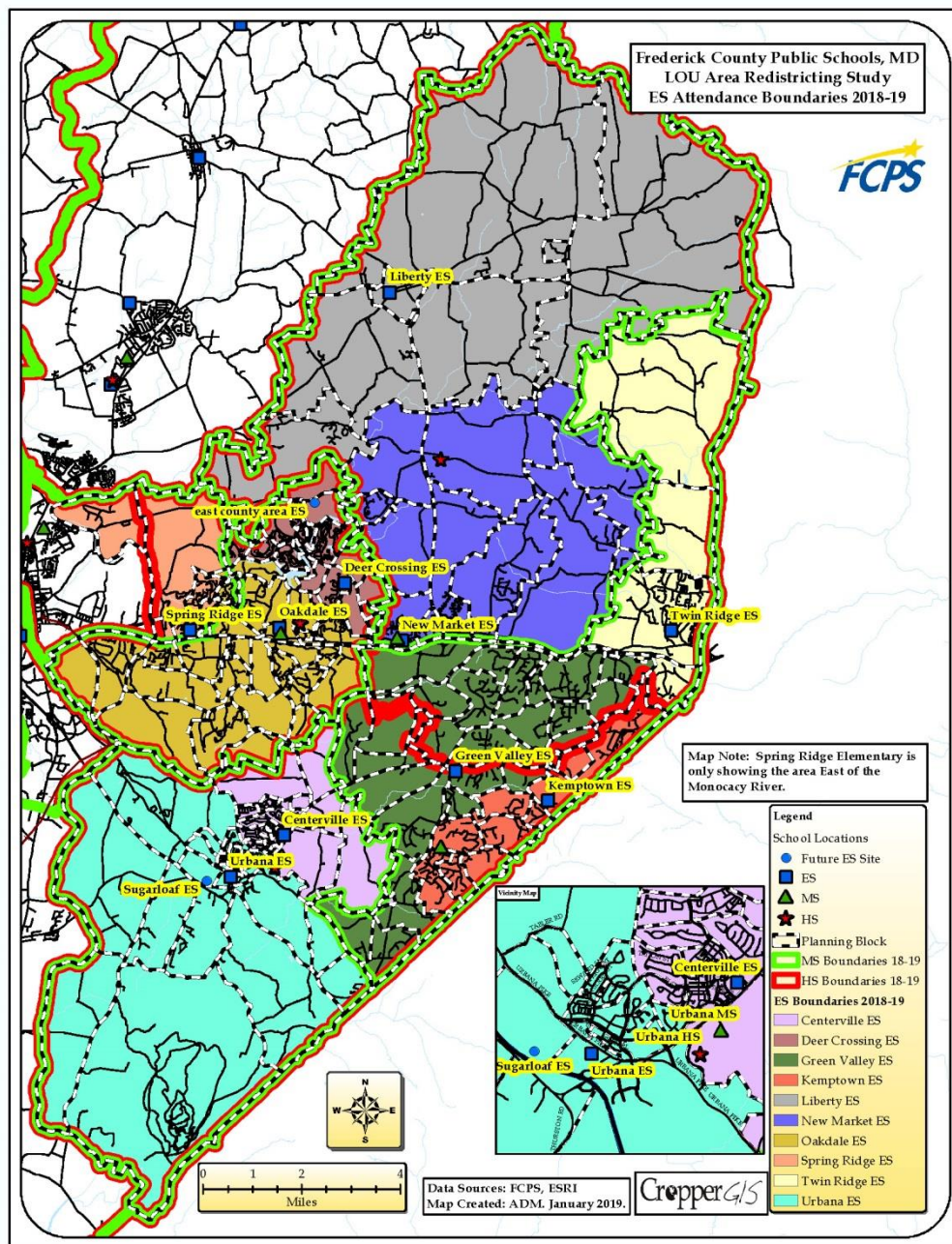




CropperGIS

# Frederick County Public Schools Linganore-Oakdale-Urbana Area Redistricting Study Public Information Session Survey

Revised: 02/18/2019



## Public Information Session Survey Results

### Introduction

A Public Information Session was held on January 31, 2019 during which the Frederick County Public Schools (FCPS) student redistricting study was introduced. It is approximated that 300 community members visited the Public Information Session. The public was encouraged to complete questionnaires with their feedback regarding each boundary option, for the committee's consideration. These questionnaires were accepted via an online survey until February 18, 2019.

The data that is presented as a result of this Public Information Session should be used as a tool to help facilitate the study. **It should not be used ALONE as a decision-making tool for the Redistricting Study.**

### Analysis Methodology

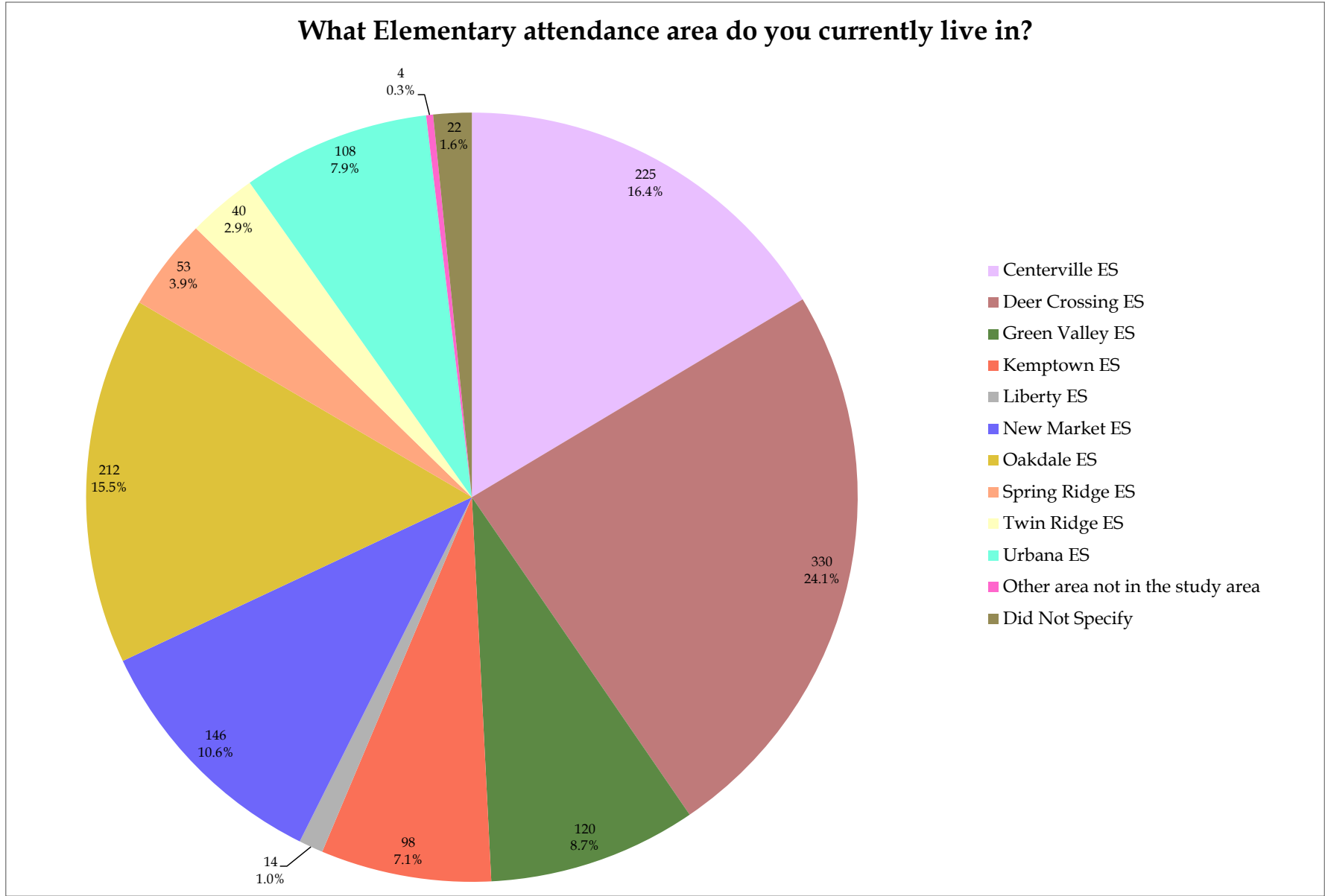
Received online surveys were exported to an excel spreadsheet. The spreadsheet tracked the date the comment was received, the neighborhood, Elementary School, Middle School, and High School attendance area the respondent is associated with, the priorities based on Board of Education Policy 200.2, and the respondent's comments on the redistricting study.

### General Summaries from Public Input Session

There was a total of 1,372 responses and 640 typed comments regarding the redistricting study.

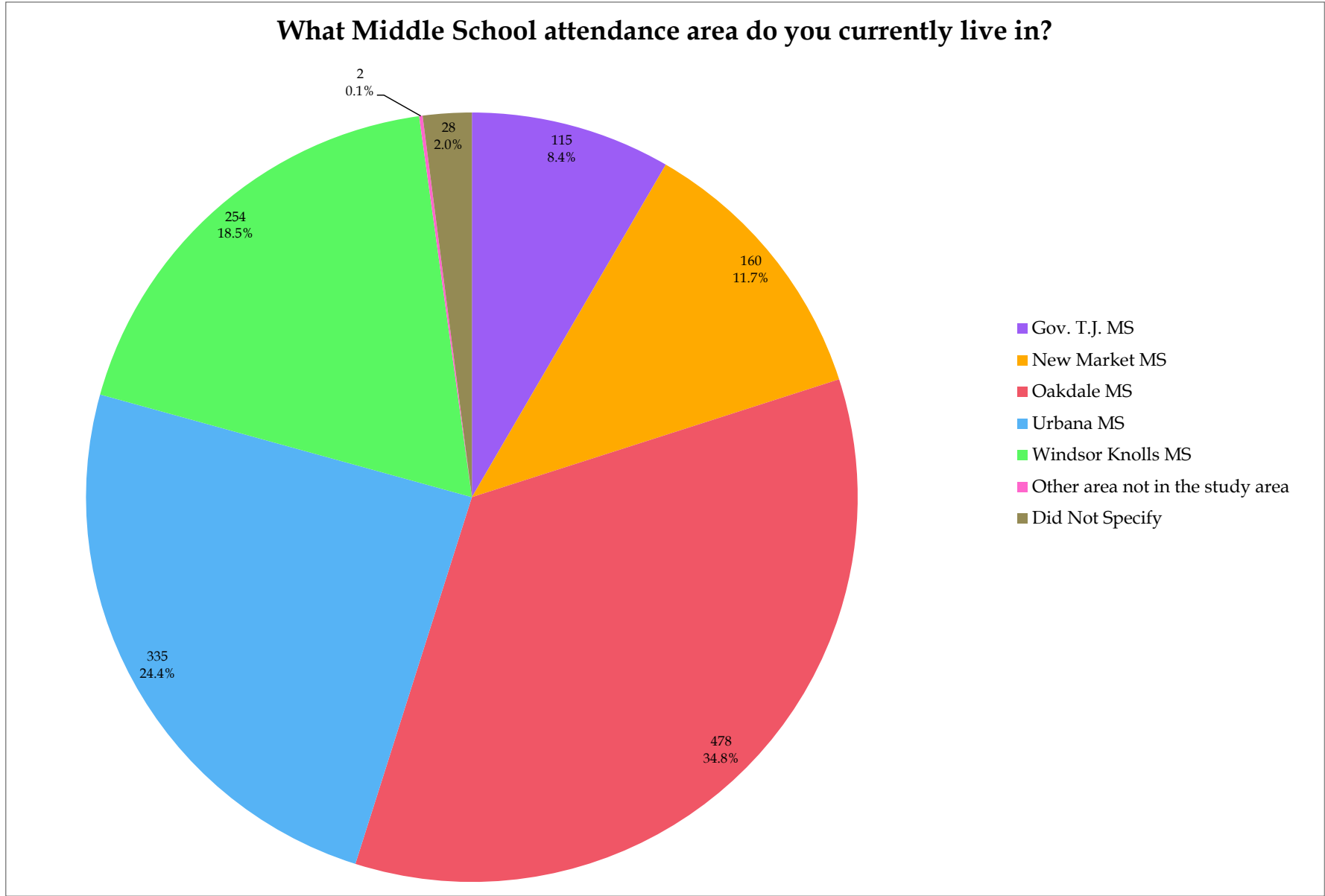
Elementary attendance area live-in

What Elementary attendance area do you currently live in?



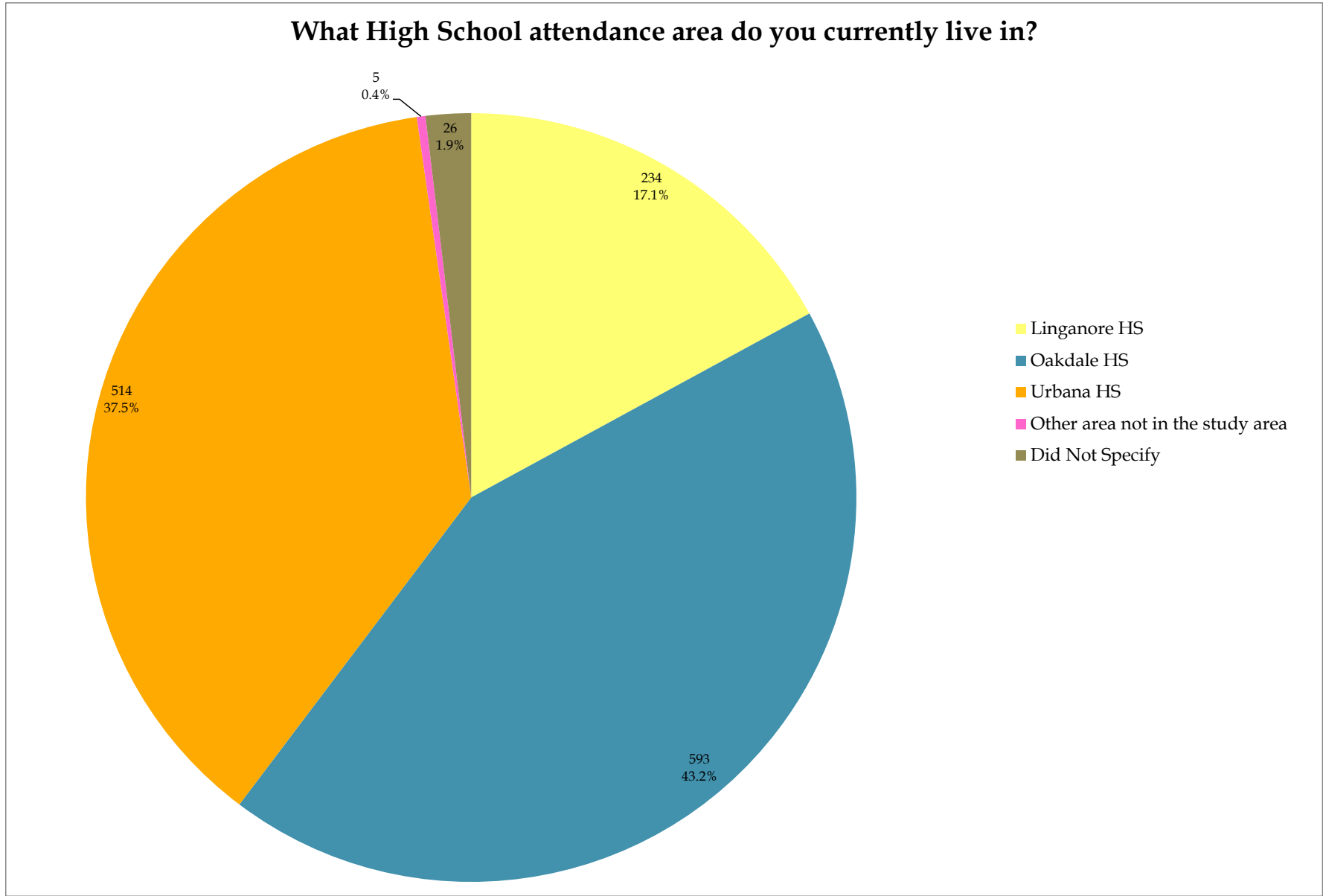
Middle School attendance area live-in

What Middle School attendance area do you currently live in?



High School attendance area live-in

What High School attendance area do you currently live in?



**Board of Education Policy 200.2 Priorities**

**Board of Education Policy 200.2 establishes the conditions and process by which school attendance boundary adjustments are made. Please identify the three factors that you believe to be most important when establishing new attendance boundaries.**

