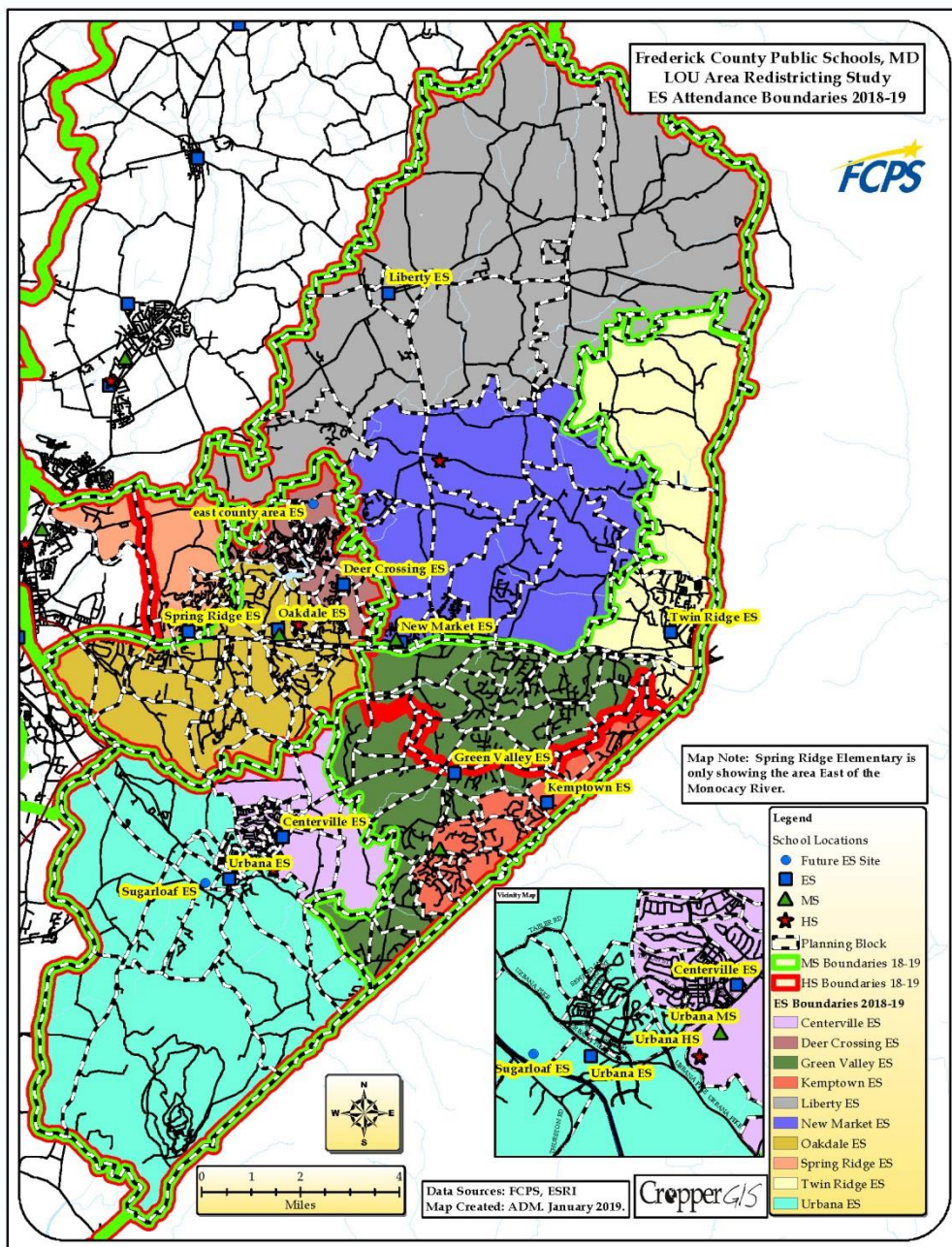




CropperGIS

Frederick County Public Schools Linganore-Oakdale-Urbana Redistricting Study Public Engagement Session Survey Results

Revised: 05/01/2019



Public Engagement Sessions Survey Results

Introduction

A series of Public Engagement Sessions were held on March 18, 19, and March 21, 2019, which intended to give an update and overview of the progress of the Frederick County Public Schools (FCPS) Linganore-Oakdale-Urbana Redistricting Study. A presentation was made to the public to inform them of the process and work performed to date, followed by a question/answer session with the public. Finally, a set of three initial concept maps and statistics were displayed on large format maps and tables in an open foyer. During the 'gallery walk', the public were invited to review the initial concepts with their neighbors, staff, and consultants. It is approximated that 400 community members visited the various Public Engagement Sessions. The public was encouraged to complete questionnaires with their feedback regarding each initial concept, for the staff and consultant's consideration. These questionnaires were accepted via an online survey until April 5, 2019.

The data that is presented as a result of this Public Engagement Sessions should be used as a tool to help facilitate the study. The feedback provided will be very useful in understanding how various communities feel about the initial concepts. It should not be used as the sole guide on determining the best outcome for the Linganore-Oakdale-Urbana Redistricting Study. The input provided will be studied, and constructive feedback will be considered as the process moves from initial concept phase to the development of DRAFT options in preparation for the next round of public engagement sessions.

The focus remains on developing a plan that best meets the study objectives and adheres best to the Policy 200.2 redistricting criteria, even if it ends up not being the most popular option.

Analysis Methodology

The survey input was collected and tabulated in a variety of ways. The survey collected the date the comment was received, the neighborhood and elementary, middle, and high school areas the respondent is associated with, and the respondent's comments on each initial concept.

In order to gain a better understanding of the responses, respondents were asked to provide their general feeling towards a comment based on the following categories: *Like*, *Dislike*, and *Neutral*. Respondents were also asked to choose which FCPS Policy 200.2 criteria they considered (they were asked to choose up to 2) when determining their opinion on an initial concept.

The online survey yielded a total of 15,966 opinion responses and 6,460 typed comments from 1,774 respondents regarding the initial concepts presented.

General Summaries from Public Information Session

In order to gain a better understanding of where the majority of the respondents are coming from throughout the district, the respondents were asked “*In which elementary/middle/high school zone do you live?*” The tables below reflect the input provided regarding where survey respondents are living. The survey participants come from across the study area, although the majority of comments received come from communities in the Urbana and Lake Linganore areas.

Total Respondents by Live-In Elementary School Area		
Live-In Elementary School Area	Total Respondents	Percent of Respondents
Centerville ES	503	28.35%
Deer Crossing ES	297	16.74%
Green Valley ES	150	8.46%
Kemptown ES	232	13.08%
Liberty ES	5	0.28%
New Market ES	126	7.10%
Oakdale ES	218	12.29%
Spring Ridge ES	24	1.35%
Twin Ridge ES	49	2.76%
Urbana ES	104	5.86%
Other area not in the study area	2	0.11%
Not Specified	64	3.61%
Total	1,774	

Total Respondents by Live-In Middle School Area		
Live-In Elementary School Area	Total Respondents	Percent of Respondents
Gov. T.J. MS	115	6.48%
New Market MS	131	7.38%
Oakdale MS	425	23.96%
Urbana MS	615	34.67%
Windsor Knolls MS	433	24.41%
Other area not in the study area	2	0.11%
Not Specified	53	2.99%
Total	1,774	

Total Respondents by Live-In High School Area		
Live-In Elementary School Area	Total Respondents	Percent of Respondents
Linganore HS	211	11.89%
Oakdale HS	534	30.10%
Urbana HS	970	54.68%
Other area not in the study area	1	0.06%
Not Specified	58	3.27%
Total	1,774	

Initial Concept Opinion Summary Tables for All Submitted Comments

The following provides a general summary on the community’s overall opinion related to the initial concepts. Important points to consider as you read this set of tables:

1. The initial concepts that were shared with the public are in preliminary stages, and will be utilized to develop a series of DRAFT Options.
2. Although it is good to understand the general opinion of the public regarding the initial concepts, the results will not be the determinant on which concept is stronger than another.
3. The majority of responses that were submitted were in regard to the most suitable initial concept for their particular neighborhood / subdivision, which is typical and normal. It is important to understand how communities feel and why they like/dislike a map for their community.
4. The focus of the input received will be to see if there are any thoughts/comments that can drive changes to the map, with the goal of better adhering to the overall project objectives and Policy 200.2 criteria.

Initial Concepts Attitude Summary

The question was asked in the survey, ‘What is your overall attitude toward an Initial Concept?’. The tables below depict the overall opinion of the survey respondents towards initial concepts 1-3 for elementary, middle, and high schools.

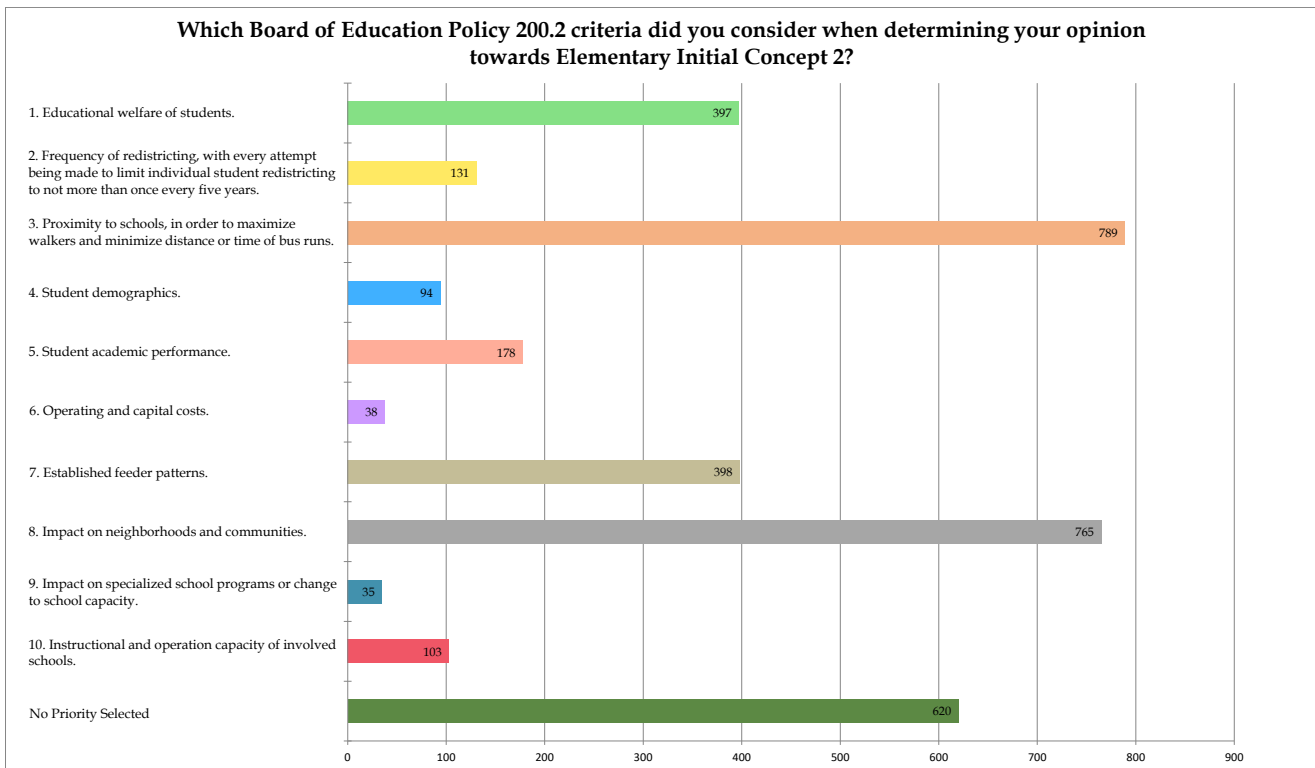
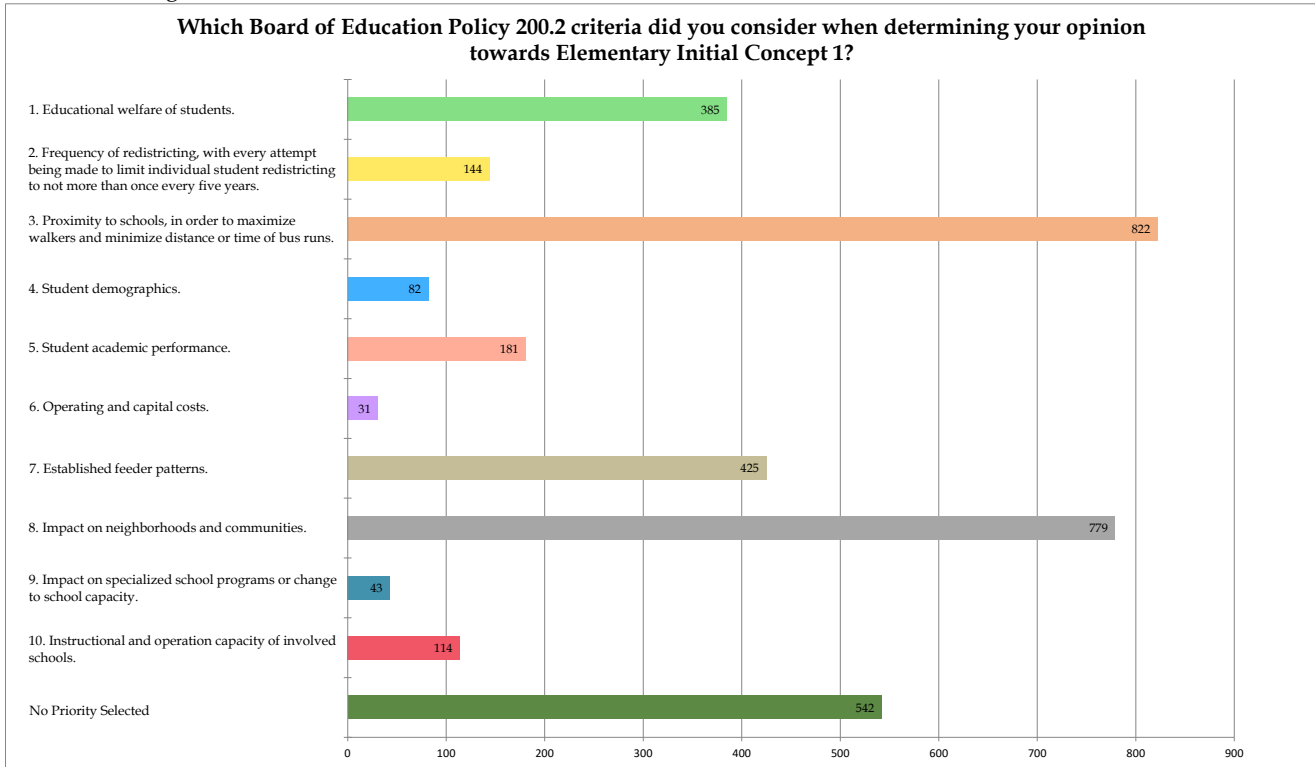
Elementary School Initial Concepts Opinion Summary						
Initial Concept Opinion	Initial Concept 1		Initial Concept 2		Initial Concept 3	
Like	777	43.8%	814	45.9%	585	33.0%
Neutral	385	21.7%	388	21.9%	402	22.7%
Dislike	535	30.2%	458	25.8%	672	37.9%
Not Specified	77	4.3%	114	6.4%	115	6.5%
Total	1,774	100.0%	1,774	100.0%	1,774	100.0%

Middle School Initial Concepts Opinion Summary						
Initial Concept Opinion	Initial Concept 1		Initial Concept 2		Initial Concept 3	
Like	707	39.9%	989	55.7%	478	26.9%
Neutral	270	15.2%	288	16.2%	303	17.1%
Dislike	666	37.5%	364	20.5%	857	48.3%
Not Specified	131	7.4%	133	7.5%	136	7.7%
Total	1,774	100.0%	1,774	100.0%	1,774	100.0%

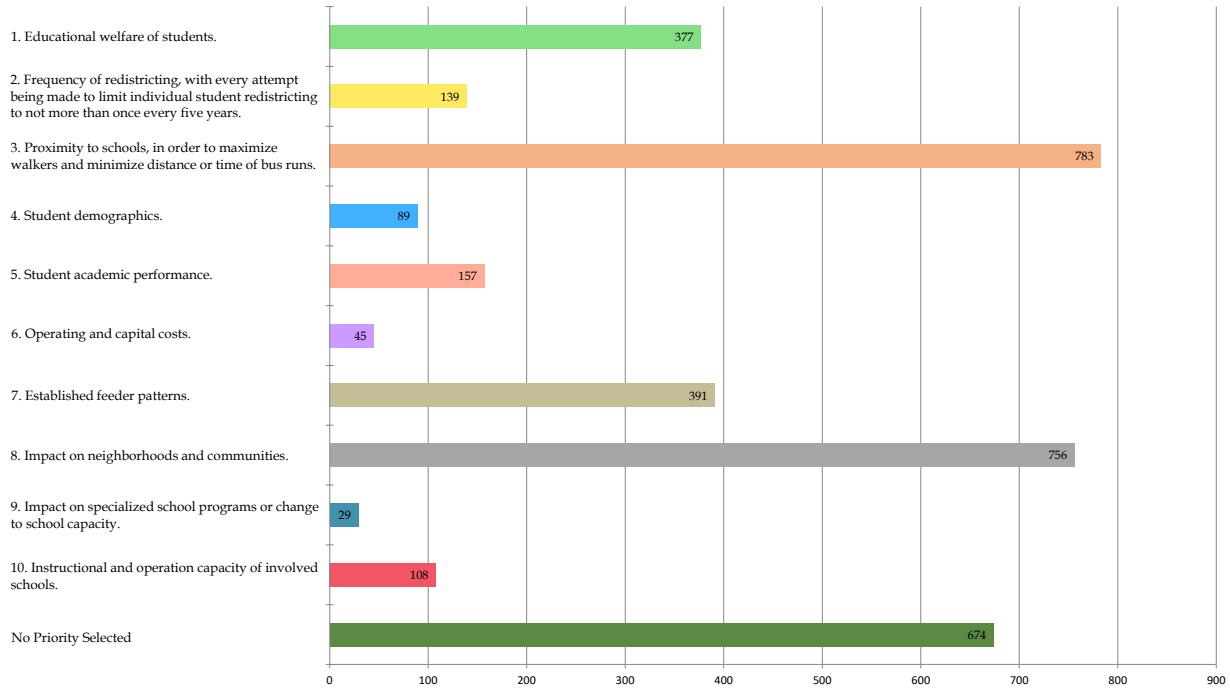
High School Initial Concepts Opinion Summary						
Initial Concept Opinion	Initial Concept 1		Initial Concept 2		Initial Concept 3	
Like	893	50.3%	1001	56.4%	901	50.8%
Neutral	337	19.0%	349	19.7%	369	20.8%
Dislike	434	24.5%	314	17.7%	377	21.3%
Not Specified	110	6.2%	110	6.2%	127	7.2%
Total	1,774	100.0%	1,774	100.0%	1,774	100.0%

Board of Education Policy 200.2 Criteria Summary Charts

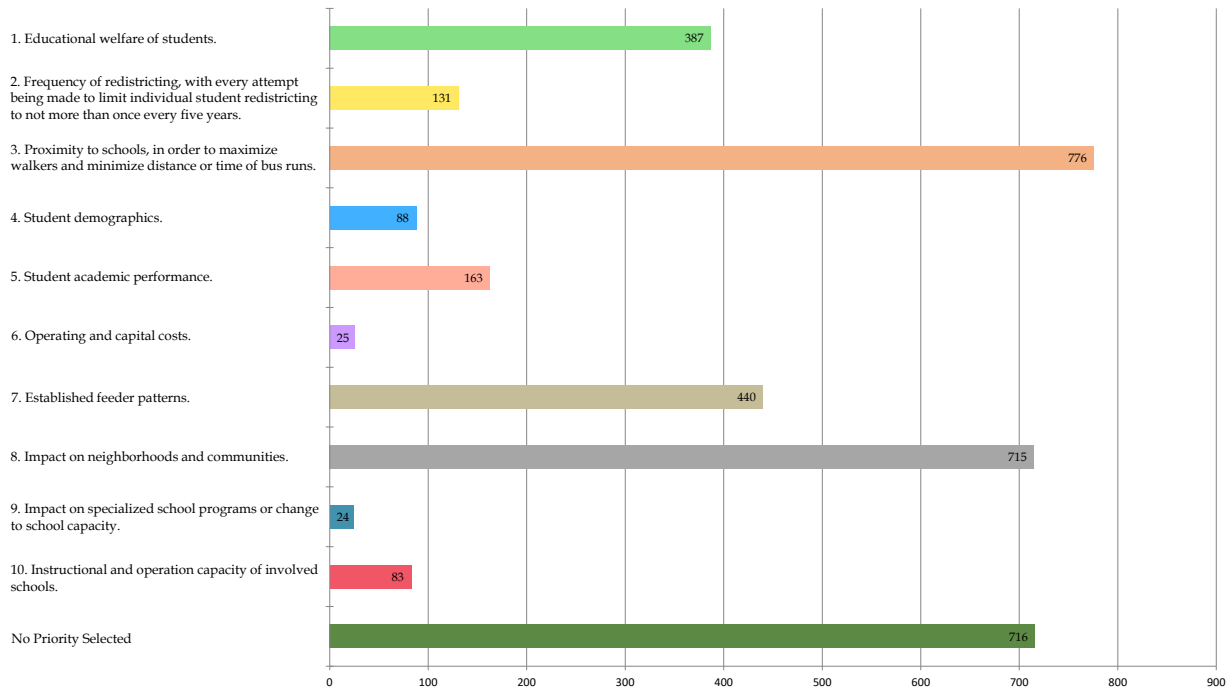
The tables below show what criteria from the Board of Education policy 200.2 was considered in determining an opinion towards an initial concept. Survey respondents were able to choose up to two of the various criteria. The results suggest that the main criteria that were considered by the public as they responded to the initial concepts were regarding proximity to schools and the impact on communities and neighborhoods.



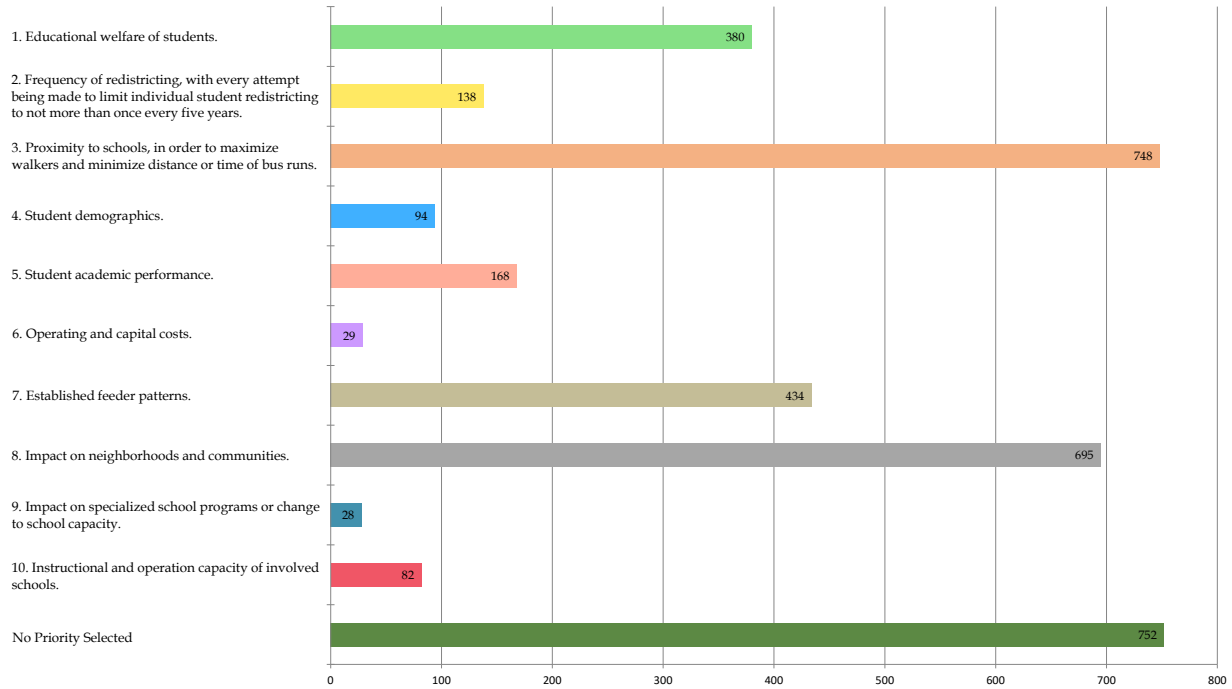
Which Board of Education Policy 200.2 criteria did you consider when determining your opinion towards Elementary Initial Concept 3?



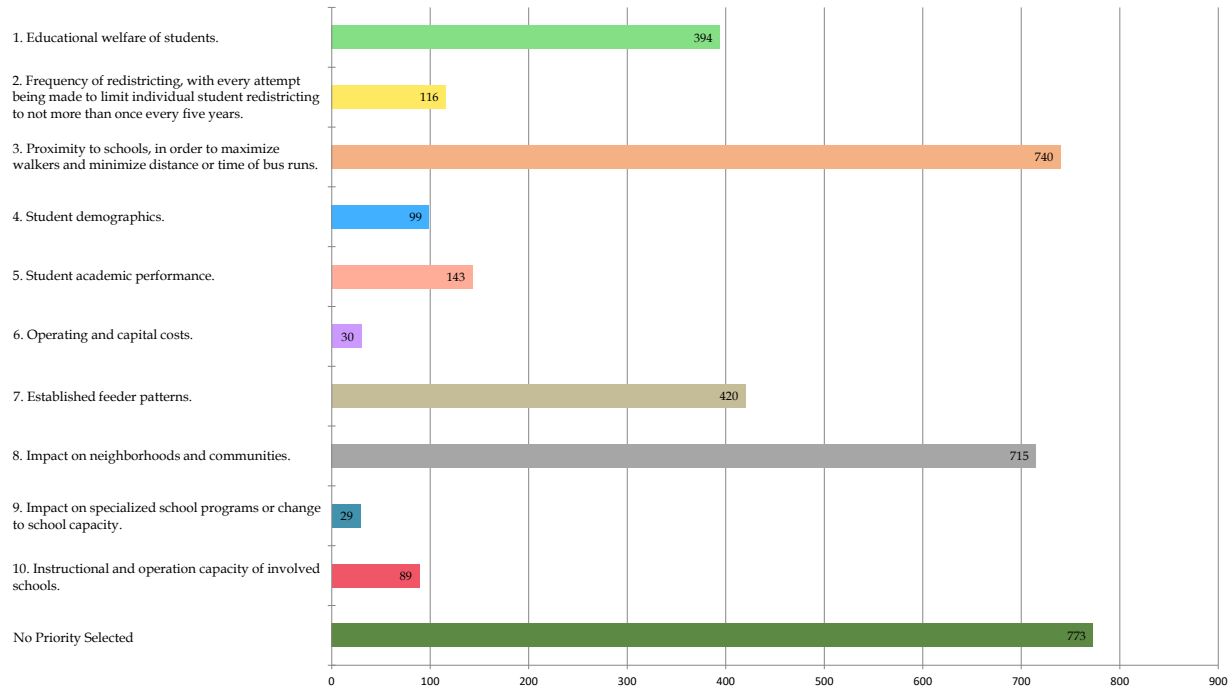
Which Board of Education Policy 200.2 criteria did you consider when determining your opinion towards Middle School Initial Concept 1?



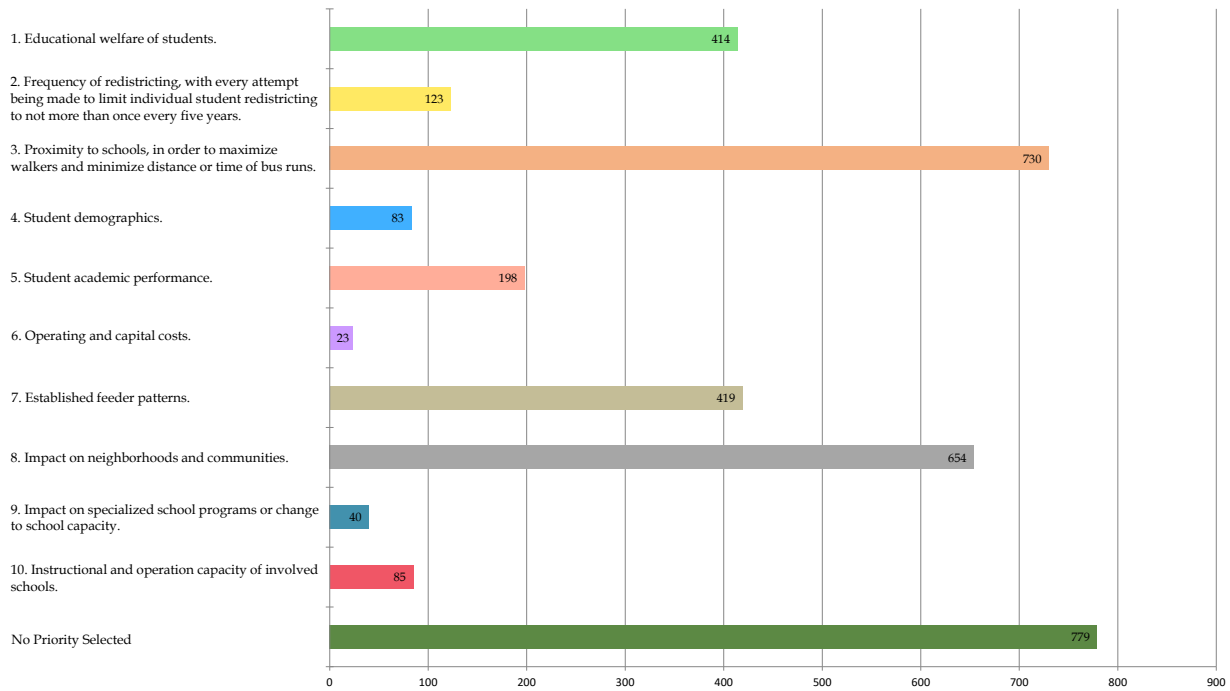
Which Board of Education Policy 200.2 criteria did you consider when determining your opinion towards Middle School Initial Concept 2?



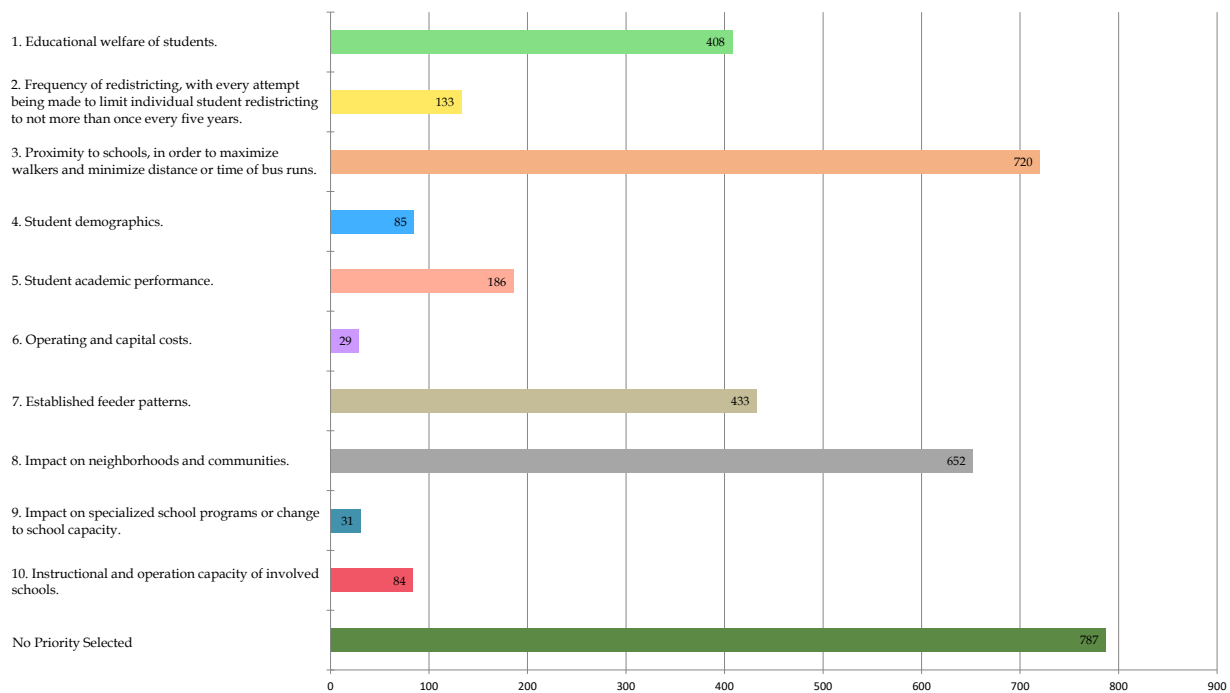
Which Board of Education Policy 200.2 criteria did you consider when determining your opinion towards Middle School Initial Concept 3?



Which Board of Education Policy 200.2 criteria did you consider when determining your opinion towards High School Initial Concept 1?



Which Board of Education Policy 200.2 criteria did you consider when determining your opinion towards High School Initial Concept 2?



Which Board of Education Policy 200.2 criteria did you consider when determining your opinion towards High School Initial Concept 3?

