

V. Recommended Facilities Plan

The recommendations found in this chapter follow from the previous discussion of current facility resources and future facility needs. The chapter is divided into 7 sections: Facility Goals, Project Selection Criteria, New Capacity Project Recommendations, Modernization Project Recommendations, Land Acquisition Projects, Major Capital Systemic Projects, and Proposed Projects by Feeders.

FACILITY GOALS

Our facility goals reflect the ultimate outcomes we designed this plan to achieve. They establish a framework for FCPS to make decisions, develop policy, and select projects.

The foundational document for all of FCPS' planning efforts is the FCPS Strategic Plan. Included in the strategic plan are five aspirational goals and correlating priorities reflecting the core vision for our schools and students. These include:

Student achievement: FCPS will equip each and every student to be an empowered learner and an engaged citizen to achieve a positive impact in the local and global community.

- FCPS will provide each and every student high quality instruction that fosters inquiry, creative thinking, complex problem solving, and collaboration.
- FCPS will raise achievement for all students and eliminate achievement gaps.

Effective and engaged staff: FCPS will hire, support, and retain staff who champion individual, professional, and student excellence.

- FCPS will implement strategies to ensure a high quality and diverse workforce.
- FCPS will support all staff by providing ongoing opportunities to grow as professionals throughout their career.

Resource allocation: FCPS will pursue and utilize all resources strategically and responsibly to achieve identified outcomes and inspire public confidence.

- FCPS will provide equitable distribution of all resources based on the varied needs of students and schools.
- FCPS will promote clear communication and transparency in allocation of resources.

Family and Community Involvement: FCPS will nurture relationships with families and the entire community, sharing responsibility for student success and demonstrating pride in all aspects of our school system.

- FCPS will encourage and sustain collaborations with families and the entire community to support student success.
- FCPS will equip staff with the knowledge and tools necessary to be positive ambassadors who build support for our goals and initiatives.

Health and Safety: FCPS will promote a culture fostering wellness and civility for students and staff.

- FCPS will promote and maintain a safe and respectful environment.
- FCPS will foster personal well-being and health among students and staff through increased awareness and engagement on these topics.

This EFMP provides a roadmap for new school construction and additions that will allow us to meet aspirational goals found in the Strategic Plan. In addition, the EFMP allows us to meet the Board's goal of operating at 90% capacity at every level system-wide within 10 years, and it sets out a program of systemic improvements which will let FCPS efficiently operate all major building systems.

PROJECT SELECTION CRITERIA

FCPS proposes new schools or additions when projected enrollment outpaces available capacity. Once we acquire a site and receive state planning approval, it typically takes us 3 years to design and construct a new elementary or middle school and 4 for a high school. When FCPS plans new construction or additions, we consider several variables, including: current and planned educational programs; location of the population to be served; long range projections of general population and school-age population growth; and available capacity in existing schools.

We propose a renovation or modernization of existing schools when we need to change a school environment to implement instructional programs or to improve health and safety. We also consider several variables when we are determining whether to renovate. Do we need to provide additional or improved spaces for general teaching areas and/or supporting areas as defined in educational program specifications? What is the physical condition of the building and its systems? What are the building's health and safety conditions? Are there potential barriers for those with disabilities?

The selection and acquisition of school sites are important components of this master plan. FCPS carefully evaluates each proposed school site before we acquire it. There are ten basic criteria for locating a site:

1. Consistency with land use master plans adopted by Frederick County, Frederick City, and other municipalities and an analysis of population trends
2. Adequate size of the site to meet site development and building code requirements adopted by Frederick County, Frederick City or other municipalities
3. Location within existing and future residential neighborhoods;
4. Remoteness from industrial, commercial or employment complexes, present and planned
5. Reasonable vehicular ingress/egress and an adequate public road system to/from the area
6. Suitability for economical construction of a school building (appropriate topography, soils, and the absence of floodplain, whenever possible);
7. Ready or attainable pedestrian access
8. Reasonable access to public fire, safety, and law enforcement resources
9. Available public water and sewer service whenever possible
10. Other criteria as required by the particular level, size, or scope of the project.

State-funded projects continue to be a priority ranked in accordance with criteria established by the Interagency Committee on School Construction (IAC), a state agency. All state projects are evaluated based on past and projected enrollments, not only at the school in question, but also at adjacent or nearby schools. Projects that add capacity may not be recommended for planning approval or construction funding if adequate capacity is available at adjacent schools. Although the county establishes priorities for its local capital program, the evaluation of these priorities with respect to other projects in the state and the limited state funds available is a responsibility of the IAC. The IAC may recommend that projects be deferred or modified so that more critically needed projects in the county or in other counties may proceed. [Appendix C](#) contains the state's project priority classifications.

FCPS' project selection criteria are also governed by Board of Education policy. Board Policy 202.1 requires that FCPS maintain a long term facilities master plan. It states:

The board will maintain long-term facilities master plans for constructing, renovating and maintaining public school facilities in Frederick County. The master plans shall attempt to balance the needs for new seats with the need for renovations to existing buildings. The board will review these plans annually and adopt a plan after considering public comment. The board will work cooperatively with the Board of County Commissioners of Frederick County and other elected officials to obtain adequate state and local funding and to implement the plans.

Board Policy 202.2 governs the capacities of Frederick County school buildings:

The board will use prototype designs whenever possible. Schools will be constructed to accommodate no more than the following maximum approximate capacities:

- *Elementary schools - 700 students*
- *Middle schools - 900 students*
- *High schools - 1600 students*

All other schools will be constructed to accommodate the number of students determined by the board to be appropriate to the school's function.

The Board of Education may authorize exceptions to the capacity figures shown above.

The maximum size of FCPS schools established by Board Policy above is consistent with the median of maximum school size policies for 10 other school systems in Maryland as noted in the report released June 2015 by the Maryland State Department of Education, [Final School Size Study Report: Impact of Smaller Schools](#).

NEW CAPACITY PROJECT RECOMMENDATIONS

New capacity projects involve the construction of new school facilities or additions to existing buildings. In either case, FCPS undertakes these projects to respond to enrollment growth. When we select these projects, we not only consider the previously discussed policies, but four additional factors as well:

1. Current and projected enrollments of existing schools.
2. Current and future housing development.
3. Current school size and maximum size criteria for elementary, middle and high schools.
4. Potential attendance area changes to reduce overcrowding.

All of the projects listed in this plan are consistent with the recommendations found in the county and municipal comprehensive plans. All are located within residential growth areas and/or priority funding areas to serve existing or emerging communities.

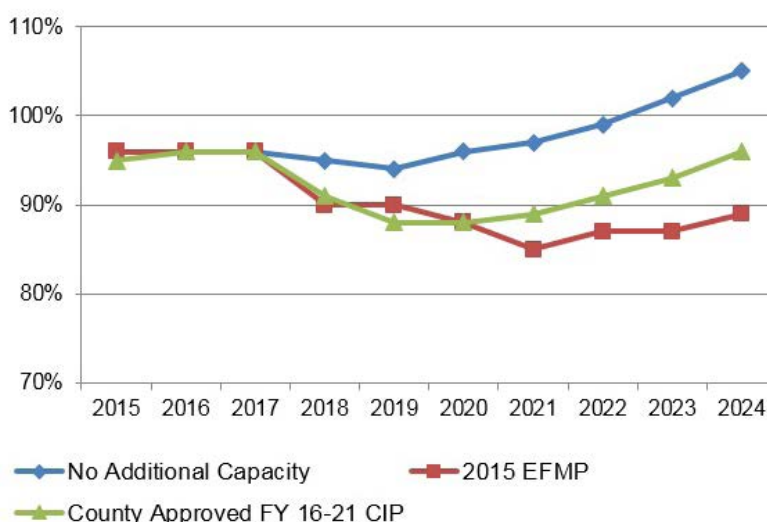
New capacity projects included in this plan ensure that schools at the elementary, middle, and high school levels will operate at 90% of state rated capacity (SRC) system-wide within 10 years. Final approval of proposed projects found in this plan are dependent of County and State funding.

Elementary Schools

According to projections, elementary school enrollments will increase by approximately 1,807 students between September 2014 and September 2024. To reduce overcrowding and attain a 90% SRC by the end of the ten year period, FCPS will need approximately 3,275 more elementary seats over the next 10 years. FCPS is presenting a plan that provides an additional 3,498 seats and includes 4 new elementary schools, one addition, one renovation/addition and one replacement between 2014 and 2024.

The new capacity projects in this plan allow us to reach the goal of 90% SRC system-wide by 2018 and maintain that goal for the remainder of the 10 year period, as shown in [Figure 5A](#). If we constructed no new capacity projects in the next 10 years, we would be operating between 94% and 105% of SRC system-wide. With new capacity projects constructed in accordance with the approved County FY16-21 Capital Improvement Plan, we would be operating between 88% and 96% of SRC.

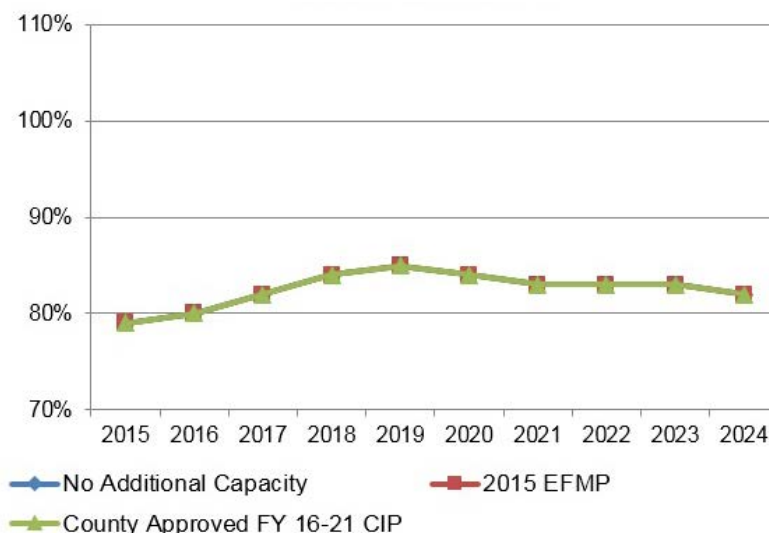
Figure 5A: System Wide Percentage of SRC – Elementary Schools



Middle Schools

Approximately 402 additional middle school students are projected between 2014 and 2024. At the middle school level, 10 year enrollment projections indicate that we can maintain between 79% and 85% of SRC system-wide with no new capacity projects over the next 10 years. No additional seats are needed to attain 90% SRC by 2024 at the middle school level, as shown in [Figure 5B](#).

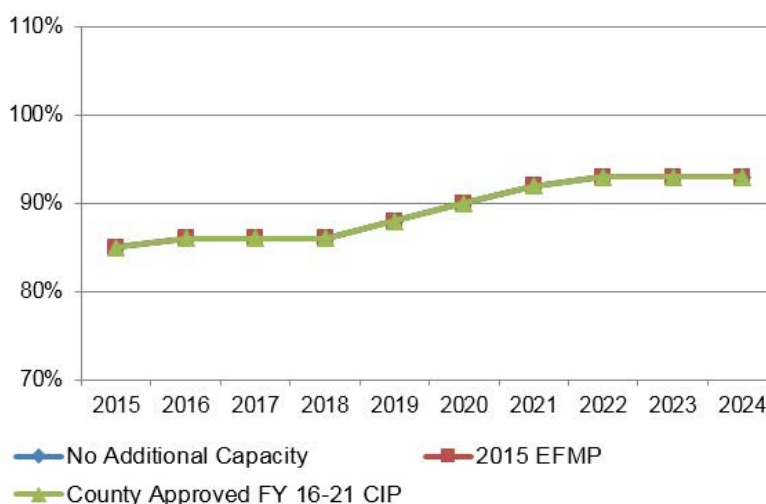
Figure 5B: System Wide Percentage of SRC – Middle Schools



High Schools

High school enrollment is expected to increase by approximately 1,282 students between 2014 and 2024. While high school enrollment is expected to reach 93% of SRC system wide by 2024 as shown in [Figure 5C](#), the only new capacity planned at the high school level within the ten year period is 223 additional seats at the Frederick HS replacement building. The replacement of Frederick High is expected to open in 2017. FCPS will continue to evaluate high school enrollments as new housing developments are approved.

Figure 5C: System Wide Percentage of SRC – High Schools



MODERNIZATION PROJECT RECOMMENDATIONS

This Master Plan proposes a scheduled program of modernization projects. Schools have been scheduled for renovation based on several criteria. In general, a school qualified for modernization if it was at least 20 years old and it ranked as a priority in the FCPS “School Modernization Project – Assessment Report” (see [Table 4B](#)). Limited renovation is also scheduled when it could be coordinated with a new addition planned for the building. School renovation projects have been scheduled consistent with Board of Education policies to include renovation projects along with projects that address overcrowding. A summary of new capacity and modernization projects can be found in [Table 5A](#) below.

Table 5A: Summary of New Capacity and Modernization Projects 2015-2024

The table below shows a summary of major capital projects that will increase capacity to accommodate residential growth in the county and modernize older facilities.

<i>Name</i>	<i>Project Type</i>	<i>Proposed Opening Date</i>	<i>Status</i>	<i>Added Capacity</i>
<i>ELEMENTARY SCHOOLS</i>				
Sugarloaf ES	New School	August-2018	Under Design	725
Butterfly Ridge ES	New School	August-2018	Under Design	725
Urbana ES	Replacement	August-2020	Future Project	214
Waverley ES	Addition	August-2021	Future Project	284
East County area ES	New School	August-2021	Future Project	725
Liberty ES	Renovation	August-2022	Future Project	100
North Frederick City area ES	New School	August-2023	Future Project	725
Total Additional Capacity				3498
<i>MIDDLE SCHOOLS</i>				
Middletown MS	Renovation	August-2023	Future Project	0
Total Additional Capacity				0
<i>HIGH SCHOOLS</i>				
Frederick HS	Replacement	August-2017	Under Construction	223
Middletown HS	Renovation	August-2024		0
Total Additional Capacity				223
<i>SPECIAL SCHOOLS</i>				
Rock Creek	Renovation	August-2020	Future Project	0
Total Additional Capacity				0

LAND ACQUISITION PROJECTS

FCPS must acquire land for new school sites, if we do not anticipate that land will be dedicated through the development review process. In the past, land acquisition was required for secondary school projects especially high school sites. County zoning and subdivision regulations did not require sites to be dedicated that were large enough for secondary schools. However, County regulations are now less prescriptive and school sites may be required as a condition of development approval when the County Council determines that a need exists for a school to serve the proposed development based on established county standards of service. As an example, the newest high school, Oakdale HS, was acquired through development approval of the Lake Linganore planned unit development. More recently, the approval of the Monrovia Town Center development has been conditioned on the dedication of a future high school site as well.

In the future, where land is not anticipated to be dedicated for school sites (especially large secondary school sites), FCPS will need to acquire sites by purchasing land. As an example, a future middle and high school site is shown on both the county and city comprehensive plans as a need in northwest Frederick City area. However, no sites have

been dedicated through the development approval process. Consideration will have to be given to scheduling land acquisition costs into future capital programs.

In all cases, County guidelines and procedures must be followed. Finally, the IAC must approve all sites before they can be utilized for a future new school construction project. Staff continues to negotiate with developers when the County Council determines a need exists and with municipalities to acquire additional school sites to meet identified needs consistent with approved county and city comprehensive plans.

MAJOR CAPITAL SYSTEMIC PROJECTS

This group of projects includes all needed major improvements to existing schools. Capital systemic projects are necessary either to improve a building for instructional purposes or to make major systemic repairs. Some of these improvements are necessary based on local evaluations by maintenance staff, while others are in response to state/federal mandates. Types of systemic projects include science lab renovations, roof replacements/renovations, mechanical projects, flooring replacement, energy management and conservation, parking and access road improvements, oil tank replacement, athletic field improvements, and playground replacement/renovations.

FCPS planning, construction, and maintenance staff visited facilities and identified systemic needs to assemble a list of potential projects. This process resulted in a list of 280 systemic needs to address potential system failures, risk abatement, instructional improvements, operational improvements, and energy management improvements. As a first step in prioritizing systemic projects, staff has placed systemic projects in one of four categories:

1. **Critical System Repairs:** Completion of the project is needed in the near term to address a critical building system which, unless repaired or replaced, would result in significant damage to the buildings, requiring the school to close and significantly disrupt school operations or could present safety concerns for students and staff.
2. **Modifications, Renovations or Repairs Needed for Instructional Program:** Completion of the project is necessary to support the system's instructional program due to a change in curriculum, outdated instructional equipment or support systems, instructional facilities that have exceeded their useful life, respond to mandated state requirements, or are needed to improve the classroom environment for students and staff.
3. **General Operational Improvement:** Completion of the project is needed to improve the general operation of the school and address such issues as improvement to traffic flow, student safety, building security, floor and window systems, improvements to energy efficiency, compliance with environmental or other regulations, or whose completion results in a less costly and more reliable system.
4. **Life Cycle Program Replacement:** Completion of this project is necessary because equipment/system is approaching or exceeded the end of its useful life as defined by industry or local standards but has not experienced significant need for repairs. Scheduling of a project in this category would be part of ongoing program that proactively identifies projects which will be needed to maintain building systems in the future.

In prioritizing systemic projects, FCPS staff worked to ensure that we met not only critical systemic needs, but also core instructional and operational improvements. The prioritized projects will result in a balanced building improvement program.

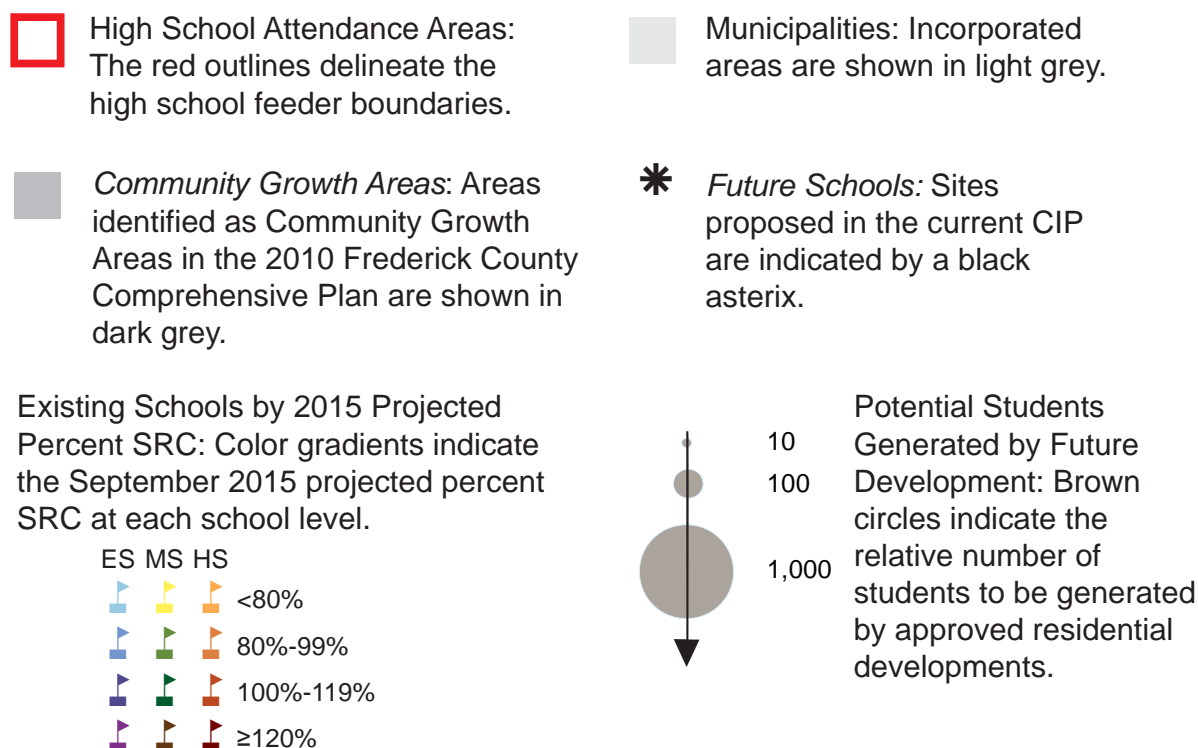
A list of all the identified systemic projects, sorted alphabetically by school, can be found in [Appendix G](#). The prioritized list of systemic projects is found in [Appendix A](#) in the FY17-22 Board of Education Capital Improvement Program. Construction of systemic projects is dependent on County and State funding.

PROPOSED PROJECTS BY FEEDERS

Individual major capital projects are detailed below by high school feeder area. A prioritized list of all major capital projects is included in [Appendix A](#) in the 2017-2022 Board of Education Capital Improvement Program.

A feeder map accompanies the description of projects in each high school feeder area. Areas outside the referenced feeder are faded. The key shown below in [Figure 5D](#) is the same for each map. All data was provided by Frederick County Public Schools and Frederick County GIS.

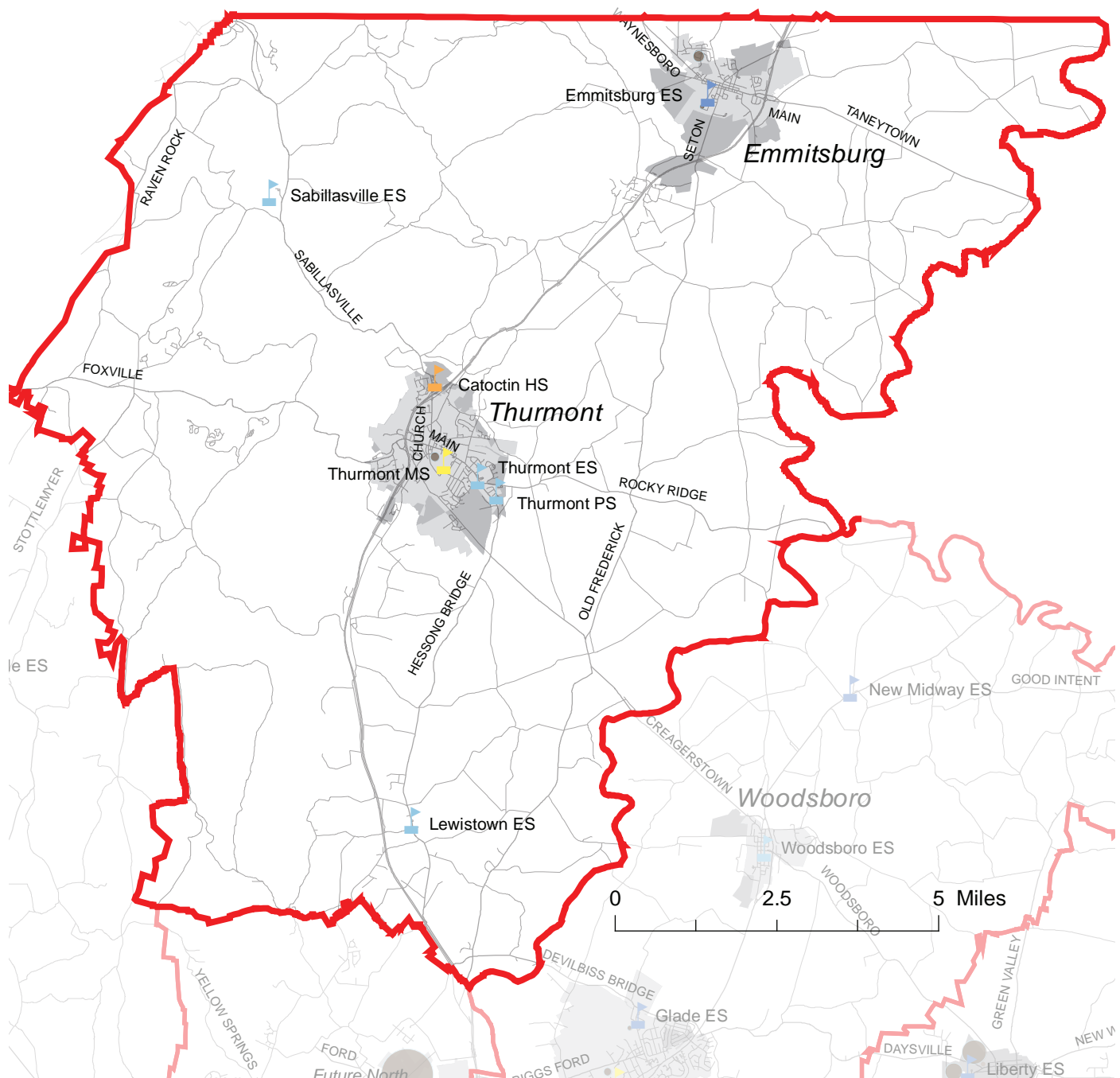
Figure 5D: Key for Feeder Area Maps



CATOCTIN FEEDER

The northern portion of Frederick County feeds into Catoctin High School and includes the communities of Sabillasville, Thurmont and Emmitsburg. All the schools in this feeder pattern had additional capacity available as of September 30, 2014. Emmitsburg Elementary School was the closest to capacity at 92 percent of SRC and is expected to exceed capacity within the next ten years. The other schools are expected to remain within their capacities throughout the ten year period, with Thurmont Middle and Catoctin High seeing some decline in enrollment. Only minimal residential growth is expected in this area. While many systemic projects are scheduled, no major construction or modernization projects are scheduled for the Catoctin Feeder area in the 2017-2022 CIP.

Figure 5E: Catoctin Feeder



Proposed projects:

- Catoctin High HVAC feasibility study and replacement (FY17-19), track reconstruction (FY18), pavement reconstruction (FY19), auditorium renovation (FY20), repair/resurfacing of tennis courts (FY22)
- Emmitsburg Elementary HVAC replacement phase 2 (FY17), roof replacement (FY18 and 22)
- Sabillasville Elementary oil tank replacement (FY22)
- Thurmont Elementary playground replacement (FY17), roof replacement (FY20), window/door replacement (FY22)
- Thurmont Middle boiler replacement (FY20), roof replacement (FY20)

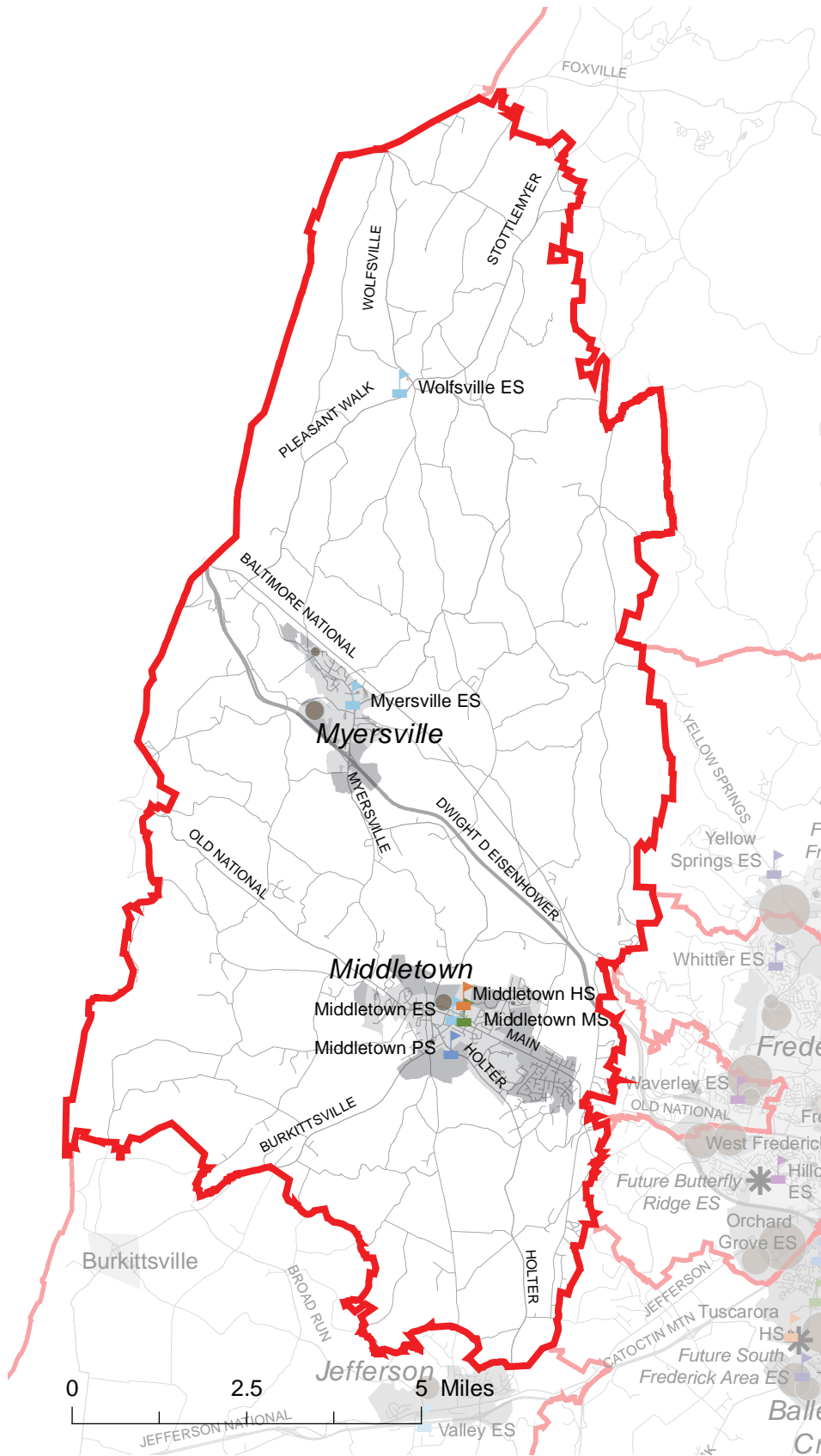
MIDDLETOWN FEEDER

The Middletown Feeder area encompasses the central western side of Frederick County, including the communities of Wolfsville, Myersville and Middletown. Most of the schools in this feeder pattern had additional capacity as of September 30, 2014, and are expected to remain within their capacity over the coming ten years. Middletown High School was near capacity at 99% of SRC but has been experiencing a declining enrollment over the past couple of years and is to continue to decline slightly over the next ten years. A small amount of residential growth is expected for this area.

Proposed projects:

- Middletown MS Renovation (FY22): Middletown MS opened in 1953 with additions in 1957, 1976, and 1995. There have been no significant renovations of the school. This school is the highest priority middle school for modernization in the FCPS Facilities Assessment. A feasibility study is planned for FY18, with design beginning in FY20 and construction in FY22. A flooring replacement will be scheduled (FY21) if the renovation project is not funded. Pipe lining is scheduled for FY17.
- Middletown HS Renovation (beyond 6 year CIP): Middletown HS opened in 1974 and has had limited renovations. This school is the second highest priority high school for modernization in the FCPS Facilities Assessment. This project will update the building systems and spaces to current standards. A feasibility study is planned in FY20, with design in FY22. If the renovation project is not funded, a roof replacement (FY19-21), and floor replacement (FY20) are also scheduled. Additional improvements will include tennis court repair/resurfacing (FY 17) and track replacement (FY21).
- Middletown Elementary roof replacement (FY21), HVAC replacement (FY22)
- Middletown Campus roadway improvements (FY18)
- Myersville Elementary playground replacement (FY17), roof replacement (FY17), oil tank replacement (FY20-21)
- Wolfsville Elementary playground replacement (FY21)

Figure 5F: Middletown Feeder



V

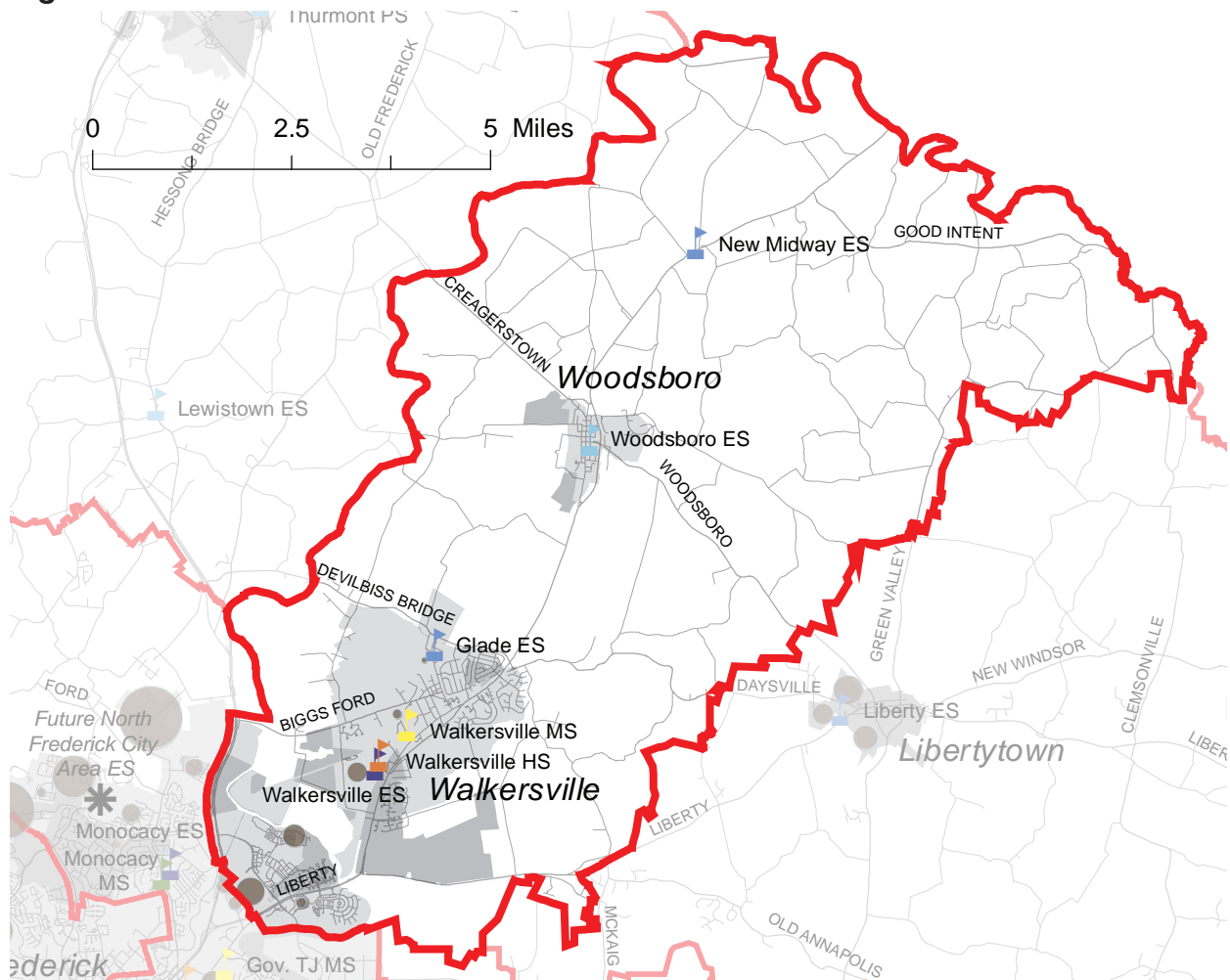
WALKERSVILLE FEEDER

The Walkersville Feeder is primarily located in the central part of Frederick County, northeast of Frederick City, and centered around the communities of Walkersville, Woodsboro, Dearbought and Worman's Mill. Glade Elementary, New Midway/Woodsboro Elementary, and Walkersville High were close to capacity as of September 30, 2014 and are expected to remain that way for the coming ten years. Walkersville Elementary was slightly over capacity and is expected to continue growing. Walkersville Middle was under capacity and may see some fluctuation in population but will likely remain under capacity. Very little residential growth is expected within this feeder in the near future.

Proposed projects:

- Walkersville MS Renovation (beyond 6 year CIP): Walkersville MS opened in 1961 with additions in 1985 and 1998. Limited renovations were done in 1998. This school is the second highest priority middle school for modernization in the FCPS Facilities Assessment. A feasibility study is planned for FY21, with design and construction beginning a few years later.
- New Midway Elementary boiler replacement (FY18), administrative AC (FY21)
- Walkersville Middle HVAC replacement (FY21), pavement reconstruction (FY21)
- Walkersville High pavement reconstruction (FY20), tennis court replacement/resurfacing (FY20), stadium light replacement (FY21), window/door replacement (FY22)

Figure 5G: Walkersville Feeder



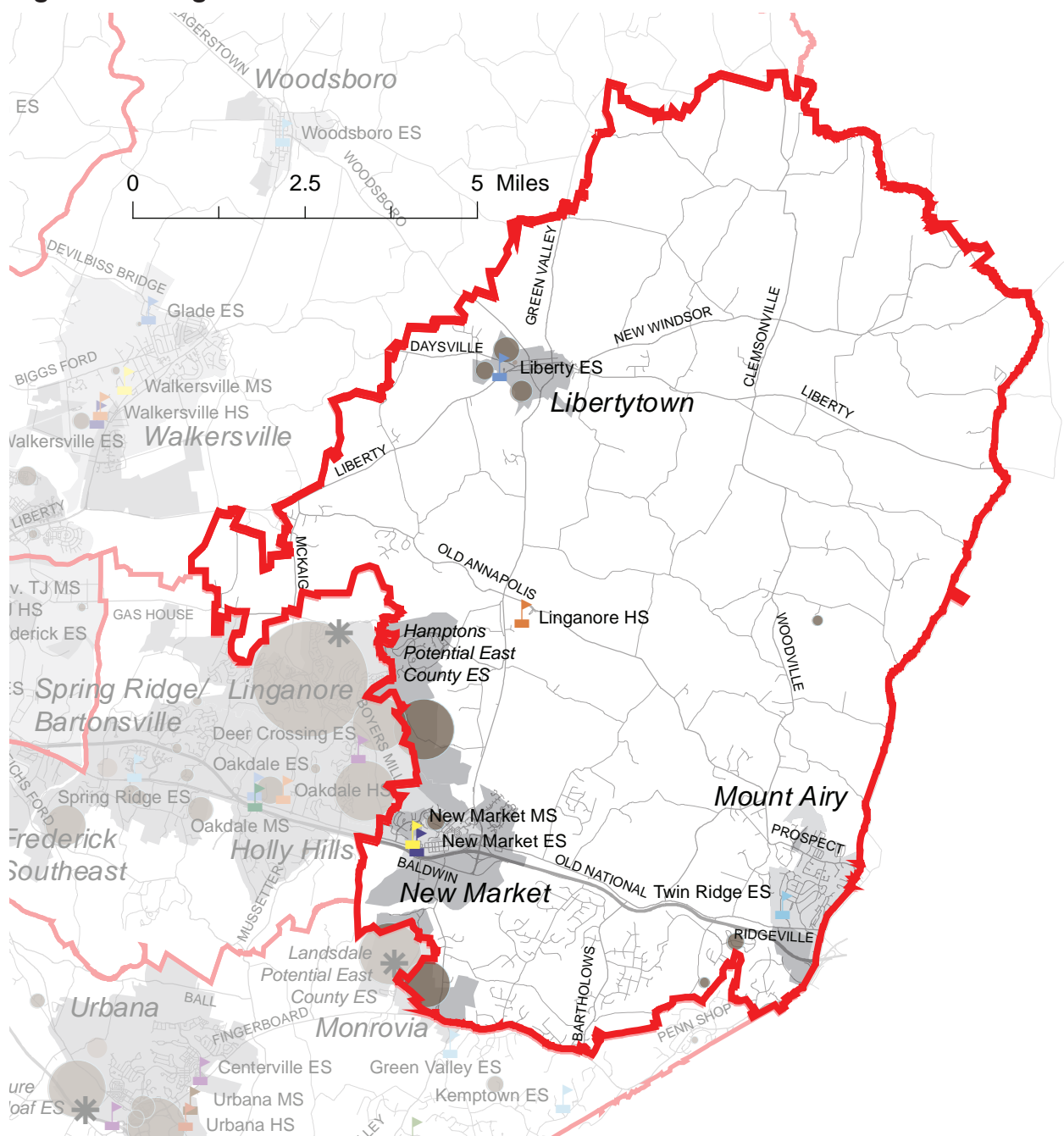
LINGANORE FEEDER

The eastern side of Frederick County, along the I-70 corridor and including the communities of Libertytown, Mount Airy, and New Market are part of the Linganore Feeder pattern. Liberty Elementary, Twin Ridge Elementary, New Market Middle, and Linganore High were well within capacity as of September 30, 2014 and are expected to remain that way for the next ten years. New Market Elementary was slightly over capacity but enrollment is expected to decline slightly by the end of the ten year period. Some residential growth is expected in this feeder area.

Proposed projects:

- Liberty ES Renovation (FY21-22): Liberty ES opened in 1927 with additions in 1950, 1967 and 1982. Only a small portion of the building was renovated in 1982.

Figure 5H: Linganore Feeder



The remainder has had limited renovations. This school is the highest priority elementary school for modernization in the FCPS Facilities Assessment following Urbana elementary. This project will update the building systems and spaces to current standards. A feasibility study is planned in FY17, with design in FY19 and construction in FY21. A playground replacement and pavement reconstruction are also scheduled for FY 21.

- New Market Elementary boiler replacement (FY19)
- Twin Ridge Elementary flooring replacement (FY20), playground replacement (FY22)
- New Market Middle utility vault elimination (FY17), flooring replacement (FY22), tennis court reconstruction (FY22)
- Linganore High tennis court replacement/resurfacing (FY21)

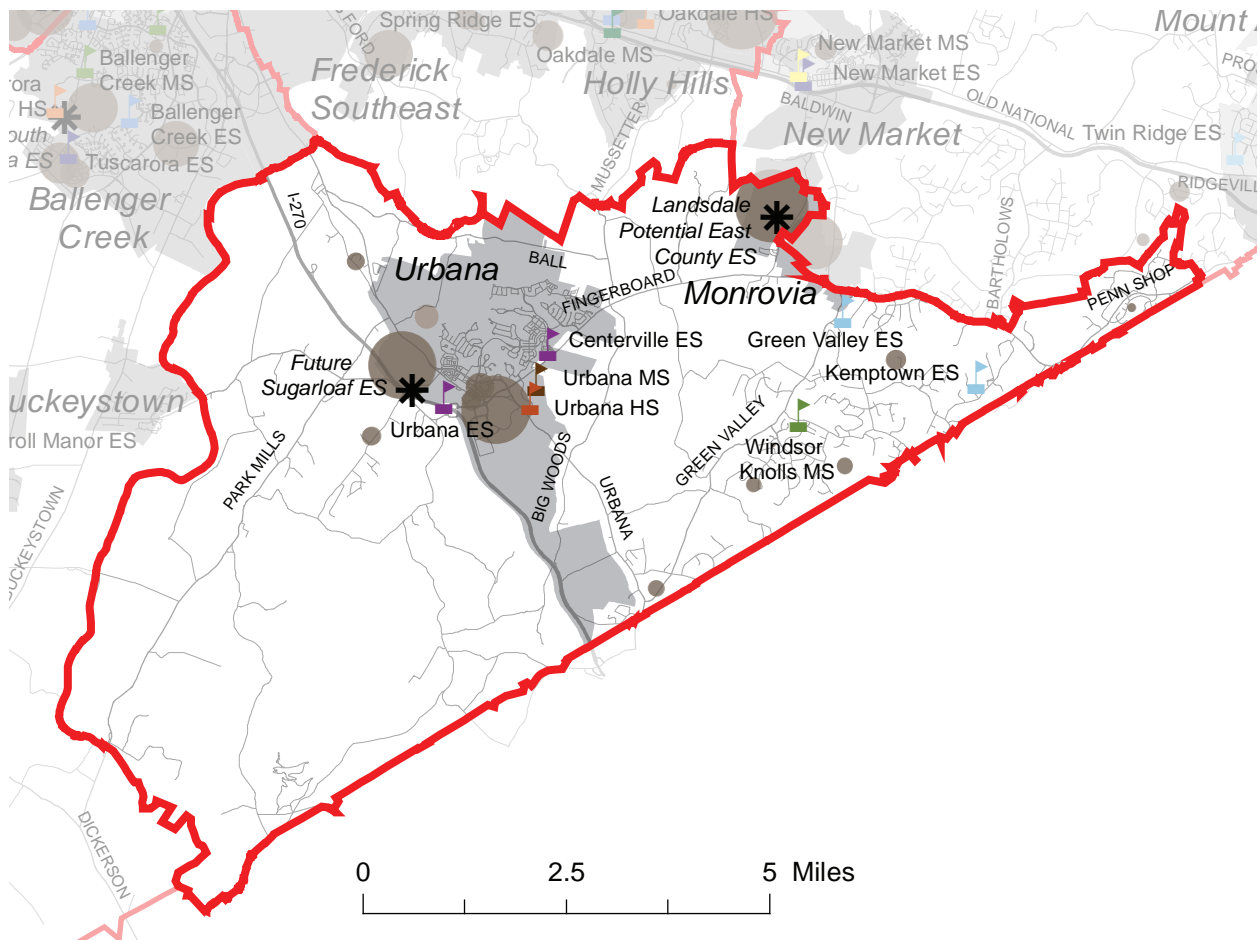
URBANA FEEDER

The Urbana Feeder is located on the southeastern side of Frederick County along the I-270 corridor, including the Urbana and Monrovia growth areas. Centerville Elementary, Urbana Middle School, and Urbana High School were all built since 1990 but were already over capacity as of September 30, 2014 and expected to continue growing over the next ten years, as is nearby Urbana Elementary School in response to continued residential development in the Urbana community. An elementary school site for the new Sugarloaf Elementary School was dedicated by the developer of the Urbana Northern MXD. In contrast, Green Valley Elementary, Kemptown Elementary, and Windsor Knolls Middle were well within capacity and will likely see only slight changes in enrollment until the Landsdale and Monrovia Town Center communities begin building. At that time, FCPS expects significant enrollment growth to occur in this feeder and will continue to re-evaluate capacity needs during the annual EFMP update. An elementary site was dedicated as a condition of approval for the Landsdale development and a dedicated high school site is a condition of approval for the Monrovia Town Center development.

Proposed projects:

- Sugarloaf Elementary (FY17-18): Construction of this new 725 seat school will address the continued build out of the Urbana Planned Unit Development and will relieve both Urbana and Centerville elementary schools. As of September 30, 2014, Urbana was operating at 134% of SRC with 15 portables and Centerville at 147% with 17 portables. A site in the Urbana North MXD was donated by the developer and approved by the state. Planning approval and design funding for this project was approved in FY14. Construction funding is scheduled for FY17-18. An August 2018 opening as the temporary home of Urbana Elementary School is planned, with opening as a new school in August 2020.
- Urbana Elementary Replacement (FY19-20): Urbana ES opened for students in 1960, with additions in 1965 and 1975. Only limited improvements have been done in the past 50 years. In addition, Urbana is an open space school and is served by a well and septic system. This project will update the building to current standards and specifications. Urbana Elementary is identified as the next elementary school in need of renovations in the FCPS Facility Assessment. A feasibility study was funded in FY 2015. Design is scheduled for FY17 and construction in FY19-20. The school will reopen in August 2020.

Figure 5l: Urbana Feeder



- **New East County area elementary (FY21):** A new school will be needed in the eastern part of Frederick County. One location option is a site in the Landsdale development on Ed McClain Road in the northeastern part of the Urbana Feeder (see Oakdale Feeder for other option). Construction of this new school depends on the continued build out of the Eaglehead/Linganore Planned Unit Development to the north of I-70 and other large planned residential communities in east Frederick County. Design will begin in FY19 and construction will occur in FY20-21.
- **Green Valley ES generator installation (FY19) and domestic water storage tank replacement (FY20)**
- **Kemptown ES HVAC replacement (FY18), boiler replacement (FY20), generator replacement (FY20), flooring replacement (FY22)**
- **Windsor Knolls MS chiller replacement (FY20)**
- **Urbana HS auditorium repairs (FY17), tennis court repair/replacement (FY19), flooring replacement (FY21)**

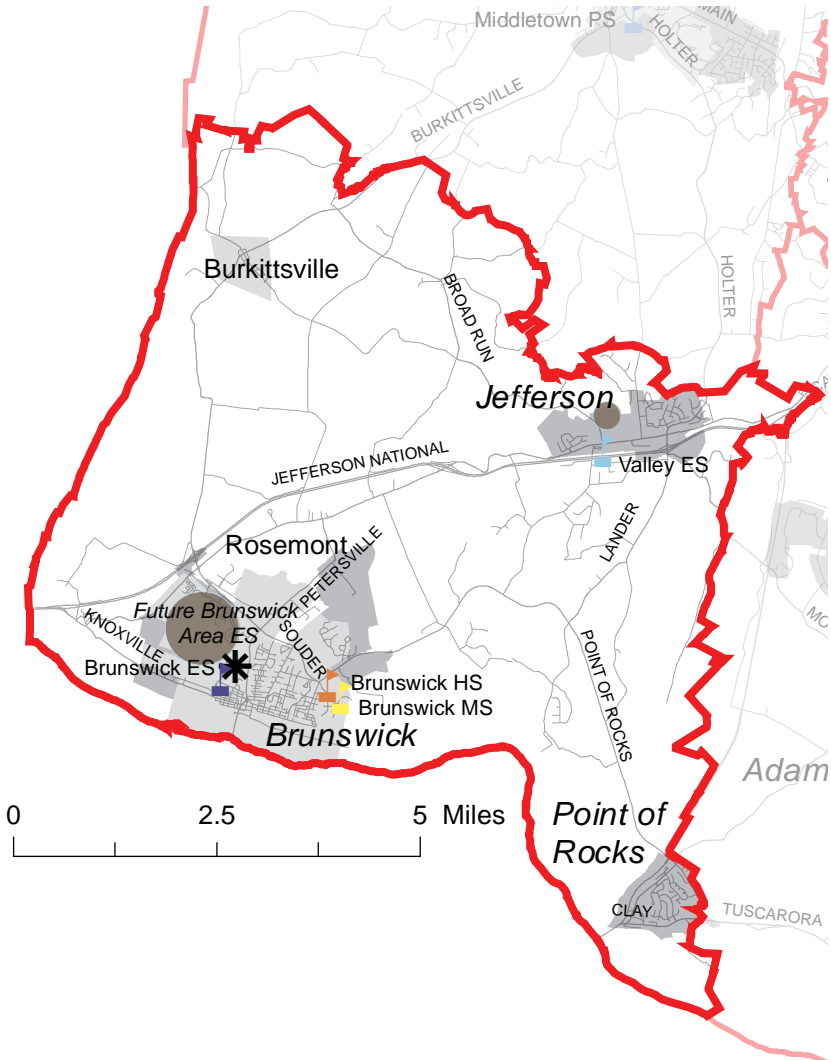
BRUNSWICK FEEDER

The Brunswick Feeder area is located in the southwestern corner of Frederick County and includes the communities of Brunswick, Rosemont, Point of Rocks, Jefferson, and Burkittsville. Brunswick Elementary was at capacity as of September 30, 2014 with enrollment expected to increase over the next ten years. Valley Elementary and Brunswick High were well within capacity with moderate growth likely to occur. Brunswick Middle was under capacity and will remain steady over the ten year planning horizon. Some residential growth is expected due to the approval of two large subdivisions in Brunswick. A future elementary site has been dedicated as condition of approval for the Brunswick Crossing development.

Proposed projects:

- New Brunswick area elementary (beyond 6 year CIP): The new school would be approximately 480 seats. Planning approval will be requested in the latter part of the ten year period beyond the six year capital improvement program when new housing development in the area is anticipated to demonstrate a need for additional seats. A site for the new elementary school will be dedicated by the developer of Brunswick Crossing. As of September 30, 2014, Brunswick ES was operating at 100% of capacity.
- Brunswick Elementary cafeteria HVAC replacement (FY17)
- Valley Elementary connection to public water (FY19)
- Brunswick Middle roof replacement phase 2 (FY18), oil tank replacement (FY19), boiler replacement (FY21)
- Brunswick High stadium lights replacement (FY17), repair/resurface tennis courts (FY18), pavement repair/overlay (FY18), track reconstruction (FY19), flooring replacement (FY22), auditorium renovation (FY22)

Figure 5J: Brunswick Feeder



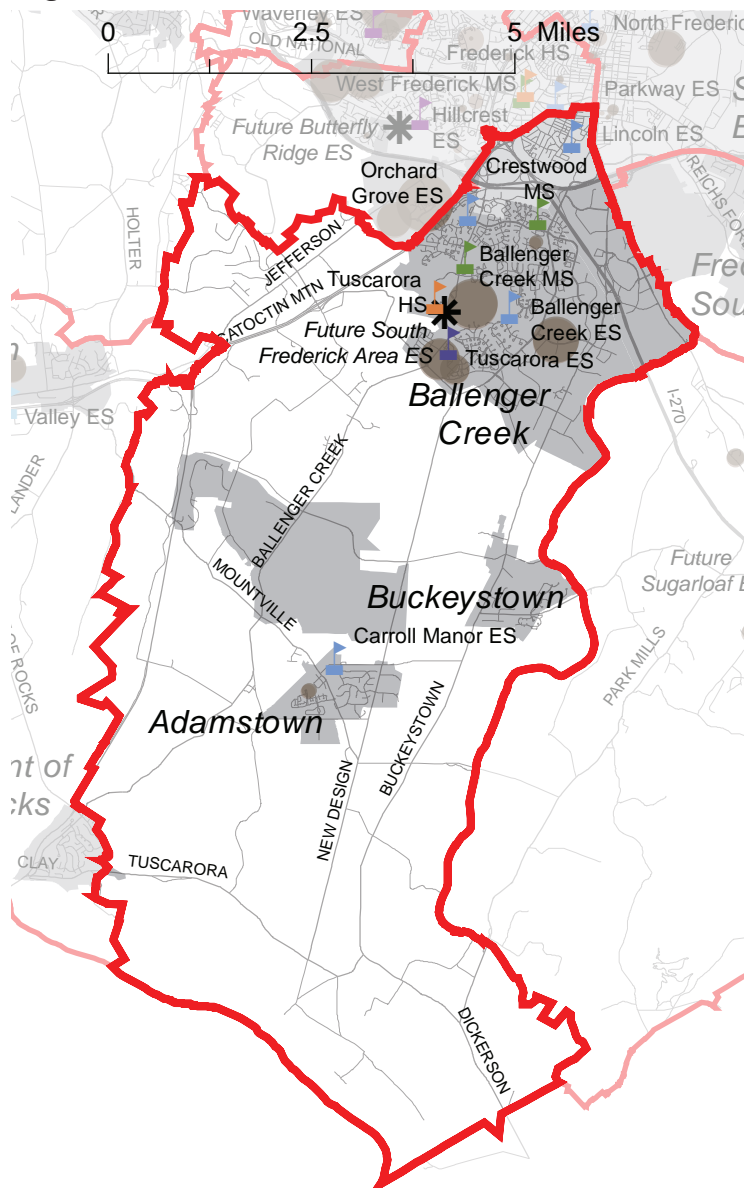
TUSCARORA FEEDER

The growth areas to the south of Frederick City in Ballenger Creek, Buckeystown, Carroll Manor and Adamstown are part of the Tuscarora Feeder pattern. Carroll Manor Elementary, Lincoln Elementary, Ballenger Creek Middle, and Crestwood Middle were within capacity as of September 30, 2014 and expected to remain that way for the coming ten years. Ballenger Creek Elementary, Orchard Grove Elementary and Tuscarora High were nearing capacity and expected to continue growing. Tuscarora Elementary was over capacity and enrollment will likely increase during the ten year planning horizon. Residential growth is expected in several mid-size developments including Ballenger Run where a future elementary school site has been dedicated.

Proposed projects:

- New south Frederick area elementary (beyond 6 year CIP): Construction of this new 725 capacity school is required to address capacity issues at Tuscarora ES and Ballenger Creek ES as well as planned residential development for this part of the County. As of September 30, 2014, Tuscarora ES was operating at 118% of

Figure 5K: Tuscarora Feeder



SRC and Ballenger Creek ES was at 98% of SRC. Planning approval for this project will be requested during the latter half of the 10 year period when new housing development in the area results in increased elementary enrollments.

- Carroll Manor Elementary chiller replacement (FY19)
- Lincoln Elementary "A" Building code compliance (FY17), "A" Building roof replacement (FY19)
- Orchard Grove Elementary flooring replacement (FY19)
- Ballenger Creek Middle roof replacement phase 1 (FY22)
- Tuscarora High track resurfacing (FY21)

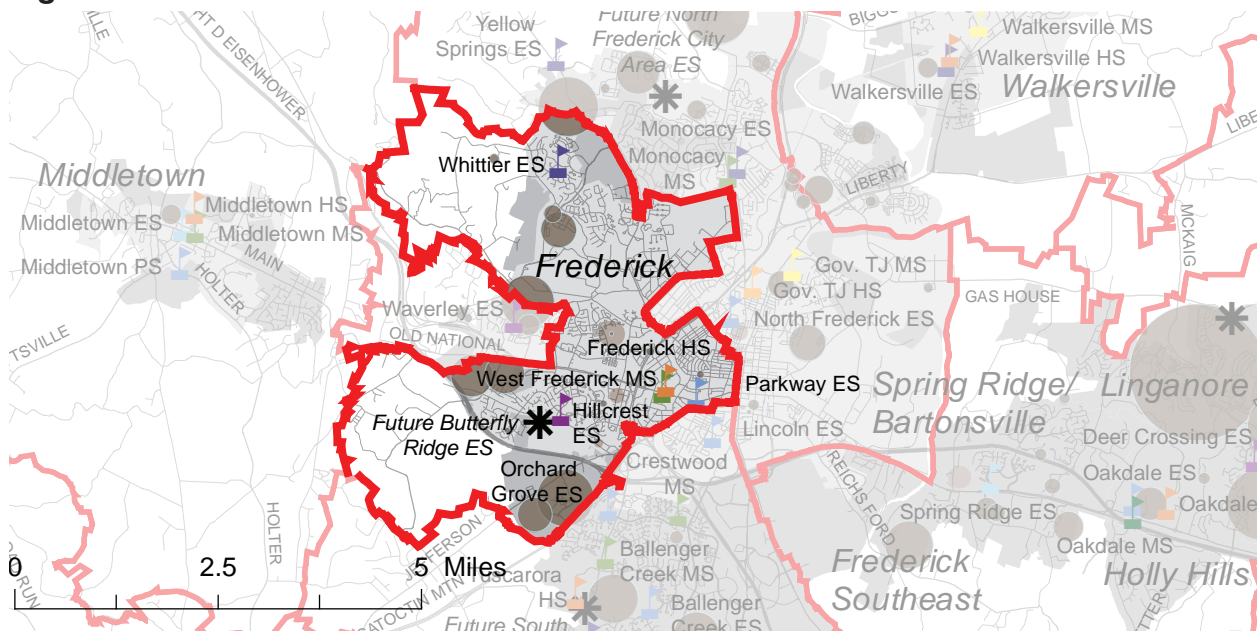
FREDERICK FEEDER

The Frederick Feeder encompasses most of the western half of Frederick City. Hillcrest Elementary was significantly over capacity as of September 30, 2014 with 32 portable classrooms on site and is expected to continue to grow over the next ten years. The new Butterfly Ridge Elementary School located on a site dedicated by Frederick City, will significantly relieve Hillcrest Elementary and possibly several other schools within the area. Whittier Elementary was over capacity and also expected to increase. Parkway Elementary was within capacity and enrollment will likely remain steady. West Frederick Middle was nearing capacity and by the middle of the ten year period will likely exceed capacity. Frederick High was within capacity with growth expected, but new seats will be added soon as part of the project to replace the school to accommodate enrollment above the existing capacity. Several mid-size residential developments have been approved around the western edge of the city.

Proposed projects:

- Butterfly Ridge Elementary (FY17-18): The school will be constructed on a site recently dedicated by Frederick City on the Hargett Farm on Butterfly Lane. Planning approval and design funding for this project was granted in FY15. Construction funding is scheduled for FY17-18. The new school will relieve Hillcrest, Waverley, and Orchard Grove elementary schools. As of September 30, 2014, Hillcrest was operating at 137% of SRC, Waverley at 138% and Orchard Grove at 92%.
- Frederick High School Replacement (FY16-17): Frederick HS opened in 1939 and has had limited renovations. The most recent renovations were completed in 1977. This school is the highest priority high school for modernization in the FCPS Facilities Assessment. The project will update the building systems and spaces to current standards. A feasibility study was completed in December 2012. Planning approval and design funding was granted in FY14; construction began in the spring of 2015. The new building is expected to open in fall 2017.
- Hillcrest Elementary window/door replacement (FY17), roof replacement (FY18-19), boiler replacement (FY22)
- Parkway Elementary gym HVAC replacement (FY18)

Figure 5L: Frederick Feeder



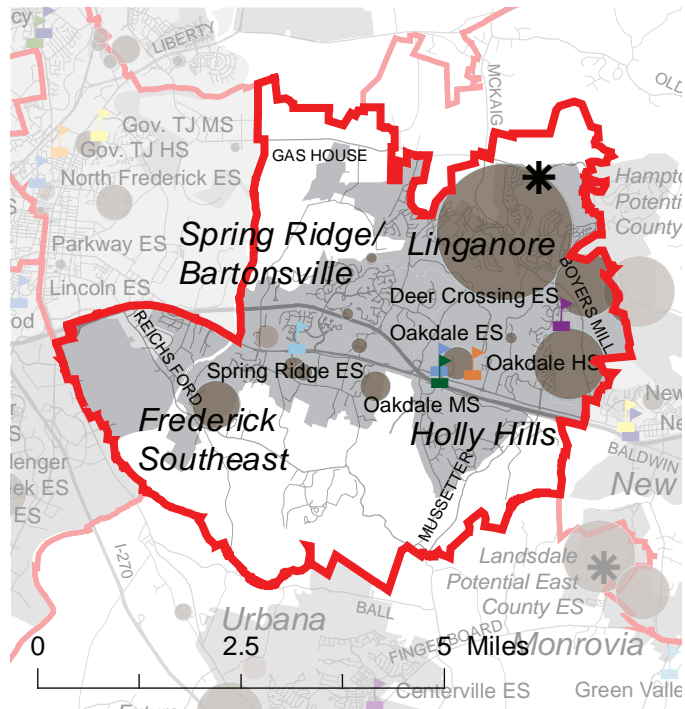
OAKDALE FEEDER

The Oakdale Feeder is centered around the Linganore community and also includes Spring Ridge/Bartonsville and Holly Hills growth areas. This area is growing quickly with many approved large residential developments, including the Eaglehead/Linganore PUD which is estimated to contribute an additional 1900 students by the time the development is completed in 25 years. All of the schools in this feeder were constructed in the last 25 years. Deer Crossing Elementary and Oakdale Middle were well over capacity as of September 30, 2014 and are likely to see slow, continued growth. Oakdale Elementary and Spring Ridge Elementary had additional capacity and are anticipated at this time to still have capacity available at the end of the ten year planning horizon. Oakdale High has room to grow at present but will likely exceed its capacity within ten years.

Proposed projects:

- New East County area elementary (FY20-21): Construction of this new school depends on the continued build out of the Eaglehead/Linganore Planned Unit Development (PUD) and other large planned residential communities in east Frederick County. One location option is near the north end of the PUD in the Hamptons subdivision with an alternate option further south in the proposed Landsdale development (see Urbana Feeder). Design will begin in FY19 and construction will occur in FY20-21.
- Oakdale High track resurfacing (FY22)

Figure 5M: Oakdale Feeder



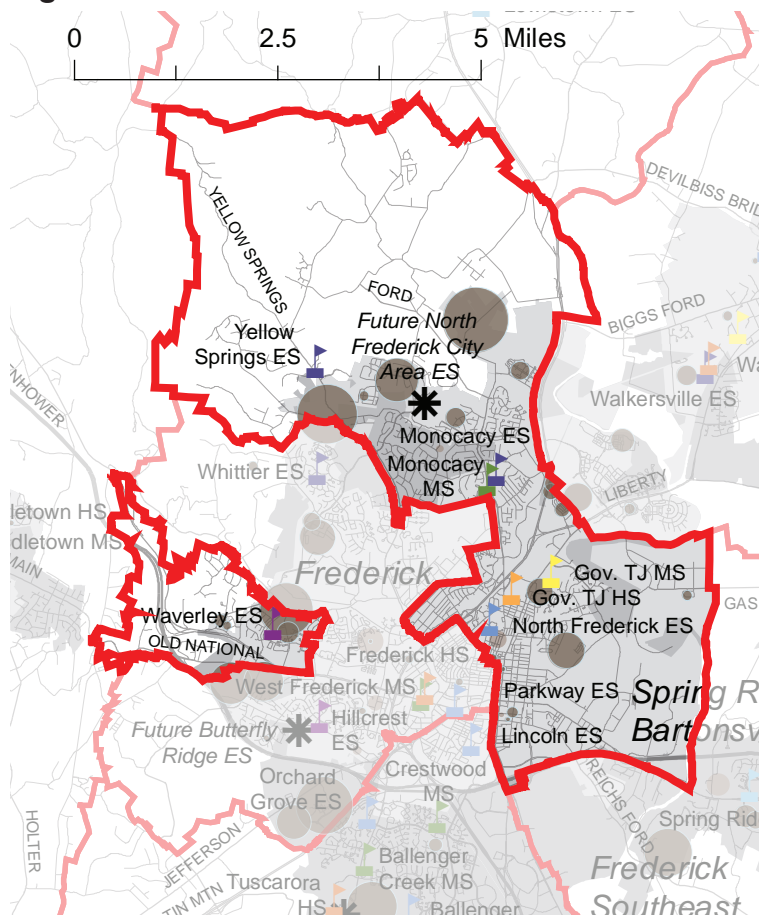
GOVERNOR THOMAS JOHNSON FEEDER

The north and eastern side of Frederick City as well as a small area on the west side of the City along West Patrick Street are part of the Governor Thomas Johnson Feeder area. Monocacy Elementary was at capacity as of September 30, 2014 and will likely continue to grow over the next ten years. North Frederick Elementary was well within capacity and will remain as such in the coming ten years due to the increase in SRC with the school's recent replacement. Waverley Elementary was significantly over capacity and expected to see significant growth. An addition is planned for Waverley. Residential developments on the north and west end of town will likely contribute to moderate growth in this feeder. A future elementary school site has been dedicated as a condition of development approval for the Tuscarora Creek development and is the likely location for the future new north Frederick City area elementary school.

Proposed projects:

- Waverley ES addition (FY20-21): This project responds to continued development in Frederick City and special programs that increase the need for teaching stations at Waverley ES. This addition project will add 310 seats to Waverley and may also relieve the adjoining Whittier ES. Planning approval for this project was granted by the state in FY11. Funding for design is requested in FY19; construction will occur in FY20-21. As of 2014, Waverley ES was operating at 138% of SRC; Whittier ES was operating at 110% of capacity.
- New north Frederick City area elementary (beyond 6 year CIP): This project will construct a new elementary school to relieve overcrowding at Monocacy ES, Walkersville ES and Lewistown ES as well as to address new development planned for the north side of Frederick City. As of September 30, 2014, Monocacy was operating at 101% of SRC, Lewistown at 74%, and Walkersville at 102%. This school is likely to be located in the Tuscarora Creek development located on Walter Martz Road on a site dedicated through the development approval process. Design funding for this project is requested in FY21 and construction would happen a few years later.
- Monocacy Elementary playground equipment (FY19), roof replacement (FY21-22)
- Yellow Springs playground replacement (FY20)

Figure 5N: Governor Thomas Johnson Feeder



- Monocacy Middle flooring replacement (FY17)
- Governor Thomas Johnson Middle boiler replacement (FY17)
- Governor Thomas Johnson High roof replacement (FY17-18), track reconstruction (FY20), oil tank removal (FY22)

SPECIAL SCHOOLS

Other school programs such as the charter schools, alternative education, career and technical education, and special education programs serve the entire county population. Overall growth in the county will impact all of these programs.

Proposed projects:

- Rock Creek: Rock Creek School serves the entire Frederick County Public School system. Funding for a feasibility study to evaluate the Rock Creek School was awarded in FY15. Design for the renovation or replacement of the school is scheduled in FY18 with construction in FY19-20. This school will receive a generator in FY17 (which can be used in the new building or reused elsewhere in the school system). If construction funding is not approved, the school is scheduled for an HVAC upgrade in FY22.
- Heather Ridge administrative RTU (FY22)

