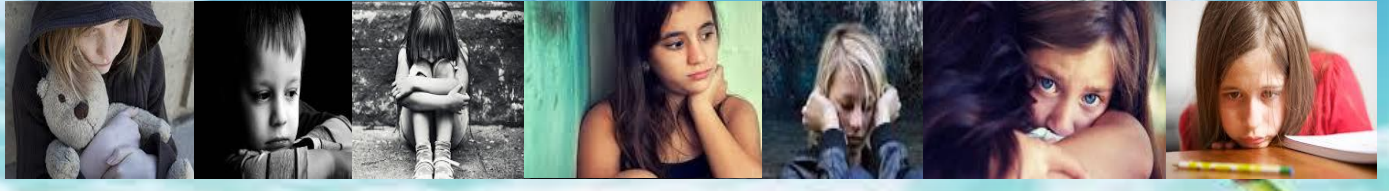




WISHLIST

for Homeless Students



Torrance Unified School District Building Bridges program identifies and works with Homeless and Foster students in the district to remove any barriers to academic participation and success. The program provides backpacks, school supplies, hygiene kits, school uniforms, and shoes to homeless youth throughout the district. High mobility, precarious living conditions, and poverty have an enormous impact on the educational success of our homeless students. Please consider making a donation that could make a difference in the life of a child.

With a \$20 contribution you can provide a homeless student with a backpack and school supplies. We also value other types of donations, including store gift cards and personal toiletries. Every donation helps us make a difference in the life of our homeless students and is greatly appreciated.

Monetary Donations

All monetary donations are used to purchase school supplies, hygiene kits and other resources for our homeless students to support their academic participation & success.

School Supplies

- | | |
|---------------------|-------------------|
| Calculators | Glue sticks |
| Pencils/Pens | Crayons |
| Spiral Notebooks | Colored Pencils |
| Composition Books | Highlighters |
| Filler Paper | Erasers |
| 3 ring binders/Tabs | Pencil Sharpeners |

Hygiene Kits/Supplies

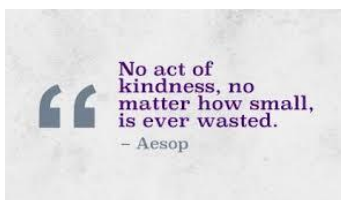
- | | |
|-------------|----------------------|
| Shampoo | Brush/Comb |
| Deodorant | Dental Floss |
| Conditioner | Toothbrush |
| Soap | Toothpaste |
| Kleenex | Cleansing/Baby Wipes |

Books

We accept new & gently used books, dictionaries, thesaurus or test prep workbooks for K-12th grade

COORDINATE A DRIVE AT YOUR SCHOOL OR WORK!

Donors may coordinate school supply drives, book drives, or hygiene kit drives. If you are interested in facilitating a fundraising effort, please contact our program for further assistance.



Family, Welcome, Enrollment Center
2336 Plaza del Amo Torrance, CA 90509
310-972-6146
fwec.tusd.org

