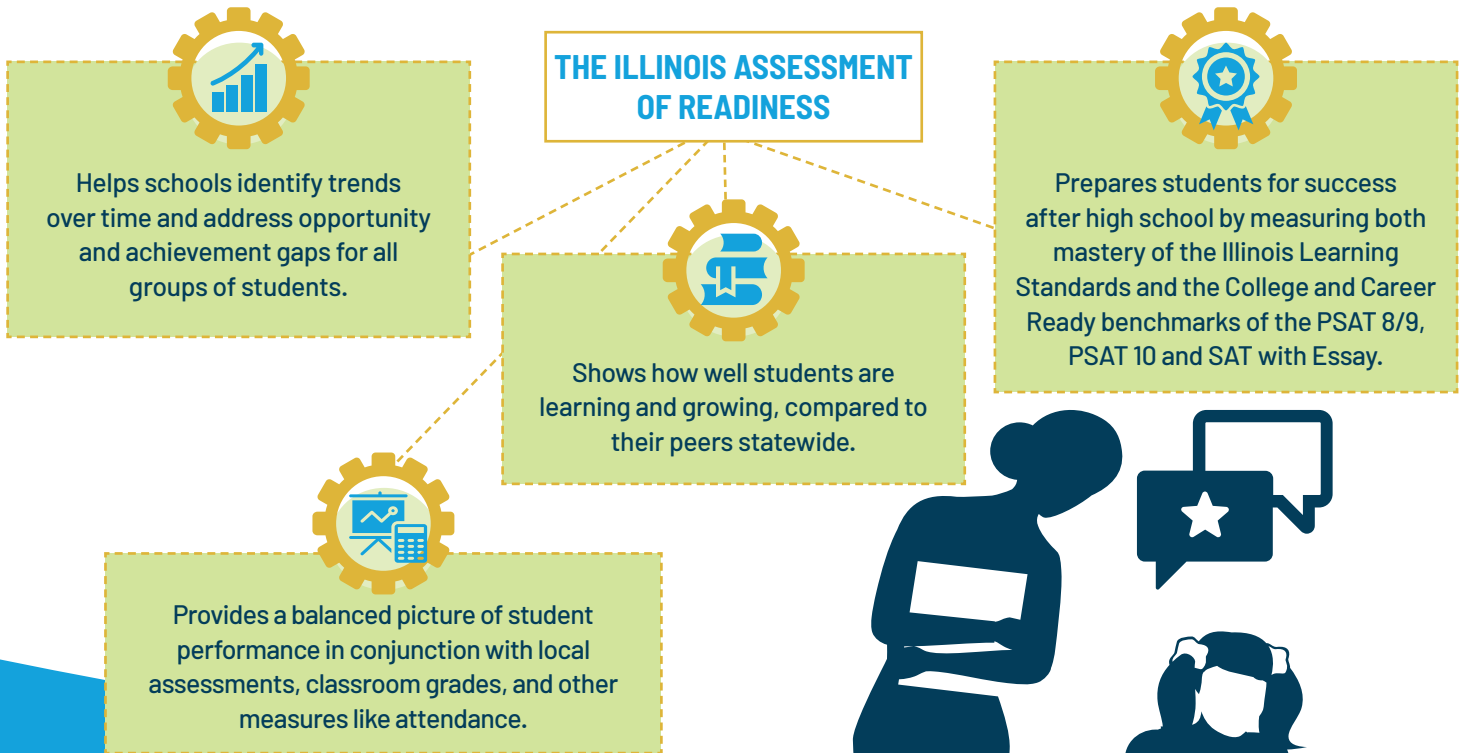


Participation in State Assessments



The federal Every Student Succeeds Act (ESSA) sets the expectation that every student participates in state assessments and requires that states calculate rates of proficiency out of at least **95% OF ELIGIBLE STUDENTS**. Universal participation in assessments promotes equity, excellence, and transparency.



Illinois has made a lot of improvements to the state assessment for grades 3-8 since it debuted in 2015, thanks to the active partnership of Illinois educators. The Illinois Assessment of Readiness is shorter, returns results more quickly, and measures not just what students know but also what they can do with what they know, as well as their growth over time.

The Illinois State Board of Education thanks you for your continued efforts to achieve equity and excellence for all students! Please reach out to assessment@isbe.net for a sample presentation and other resources to support universal participation in your district.



AVERAGE ASSESSMENT PARTICIPATION RATE FOR ILLINOIS



Illinois State Board of Education

Visit

isbe.net/IAR

Impact of Participation in IAR



A school's participation rate on state assessments impacts its rate of proficiency and its annual designation. ESSA requires states to calculate proficiency by dividing the number of students who met or exceeded standards by either the number of students who tested or 95% of the number of students who should have tested, whichever is greater. Schools with less than 95% participation in state assessments are ineligible to receive the Exemplary designation. Schools with any student group that has a participation rate below 95% for three consecutive years will develop and implement a Workplan for School Improvement. English Learners must take all portions of the IAR to meet federal requirements, even those in their first year in the U.S. Their results in that first year provide a baseline for growth but *do not count for accountability*.

SCHOOL A
(100 students)

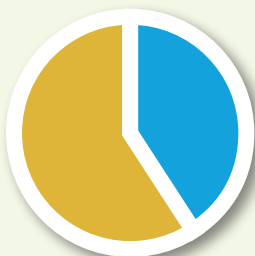


97 participate in the state assessment



40 meet or exceed standards

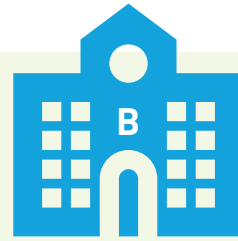
Because School A's participation rate is above the required threshold of 95 percent, **School A's proficiency rate would be**



41.2%

(the result of dividing 40 by 97)

SCHOOL B
(100 students)

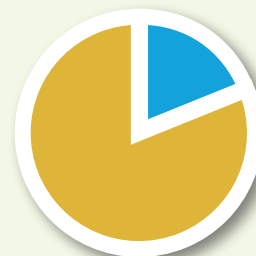


50 participate in the state assessment



21 meet or exceed standards

Because School B's participation rate is below the required threshold of 95 percent, **School B's proficiency rate would be**



22.1%

(the result of dividing 21 by 95)

