



CAMPLIN
Environmental Services, Inc.

AHERA 3-YEAR REINSPECTION

FOR

**Pennoyer School District #79
5200 North Cumberland Avenue
Norridge, Illinois 60706
School ID #14-016-0790-2001**

AT

**Pennoyer School District
5200 North Cumberland Avenue
Norridge, Illinois 60706**

ON

March 19, 2020

REINSPECTION PERFORMED BY:

**CAMPLIN ENVIRONMENTAL SERVICES, INC.
9575 WEST HIGGINS ROAD, SUITE 450
ROSEMONT, ILLINOIS 60018
(847) 292-1190**

PROJECT #20-026

**ASBESTOS HAZARD EMERGENCY RESPONSE ACT
ASBESTOS 3-YEAR REINSPECTION**

LOCAL EDUCATIONAL AGENCY: Pennoyer School District #79
5200 North Cumberland Avenue
Norridge, Illinois 60706

DESIGNATED PERSON: Viktor Will
Director of Buildings and Grounds

SCHOOL: Pennoyer School District
5200 North Cumberland Avenue
Norridge, Illinois 60706

REINSPECTION PERFORMED BY: Morgan Camplin
License #100-06610
Camplin Environmental Services, Inc.
9575 West Higgins Road, Suite 450
Rosemont, IL 60018

REINSPECTION DATE: March 19, 2020

Viktor Will
Designated Person

Morgan Camplin
Building Inspector

ENDORSEMENTS

TC EXPIRES

INSPECTOR

9/19/2019

PROJECT MANAGER

10/11/2019

AIR SAMPLING PROFESSIONAL

Alteration of this license shall result in legal action
This license issued under authority of the State of Illinois
Department of Public Health
This license is valid only when accompanied by a valid
training course certificate.

IDPH ASBESTOS PROFESSIONAL LICENSE

ID NUMBER
100 - 06610

ISSUED
4/19/2019

EXPIRES
05/15/2020

MORGAN CAMPLIN
20061 MONTEREY AVENUE
LYNWOOD, IL 60411

Environmental Health



This is to Certify that
Morgan Camplin
Has Satisfactorily Completed Training in Accordance
with Applicable Rules and Regulations
Asbestos Abatement Supervisor
Refresher

Completed: 10/9/2019 Expires: 10/9/2020
Certificate: ASR1910091893

Occupational Training & Supply, Inc.
7233 Adams Street • Willowbrook, IL 60527 • (630) 655-3900



This is to Certify that
Morgan Camplin
Has Satisfactorily Completed Training in Accordance
with Applicable Rules and Regulations
Asbestos Building Inspector
Refresher

Completed: 10/24/2019 Expires: 10/24/2020
Certificate: BIR1910242039

Occupational Training & Supply, Inc.
7233 Adams Street • Willowbrook, IL 60527 • (630) 655-3900

TABLE OF CONTENTS

SECTION I	-	Background
	-	Reinspection Summary
	-	Changes
	-	Asbestos Remaining In Place
SECTION II	-	Reinspection Protocol
	-	Pre-Inspection Procedures
SECTION III	-	Reinspection Data
SECTION IV	-	Response Action Recommendations

SECTION I

REINSPECTION SUMMARY

SECTION I - REINSPECTION SUMMARY

BACKGROUND

On March 19, 2020, Camplin Environmental Services, Inc. performed the AHERA 3-Year Reinspection at Pennoyer School District, 5200 North Cumberland Avenue at Norridge, Illinois 60706. Licensed Building Inspector Morgan Camplin performed the on-site reinspection.

A total of 25 homogeneous materials were reassessed during the reinspection. Materials requiring revised response actions are listed in Section IV of this document.

REINSPECTION SUMMARY

The condition of the following materials were assessed during the reinspection. The materials are summarized by friability. Materials defined as non-friable can be maintained in place. Materials defined as friable will require a response action.

Materials currently defined as **non-friable**:

9" Floor Tile
Mastic under 9" floor tile
12" Floor Tile
Mastic under 12" floor tile
Terrazzo Flooring
Fire Door
Transite Fume Hood

Materials currently defined as **friable**:

Materials requiring action:

<u>Material</u>	<u>Location</u>	<u>* Response Action</u>
Drywall	Boiler room	Need to Patch or have tested
9" Floor Tile	Storage Room Lower Level	Need replaced chipped or loose tile

* See Section IV for detailed response action recommendations.

CHANGES

The following changes were noted between the reinspection and the original inspection report:

2019 Samples has been negative only in Main office, Staff & Students washrooms & Teacher Lounge area are 2'X2' Ceiling Tile With Tiny Dots, Ceramic Tile Wall Adhesive, Ceramic Tile Flooring Adhesive, Black Strip Edge Flooring, Tan Baseboard & Mastic, 2'X2' Floor Tile Linoleum & Mastic (under <1% Chrysotile), Plaster Wall, Roofing, Flashing Roof , Patch Tar Roof , Caulk on Metal Frame, Black Baseboard, Drywall, 12"X12" White Floor Tile With Tan Specks, 12"X12" White Floor Tile With Blue/Grey Specks, Plaster Ceiling, Fiberglass Pipe Insulation & Drywall Columns

2019 Samples has been positive only in Main office, Staff & Students washrooms & Teacher Lounge area are 9" Floor Tile underneath the Carpet under old cabinet & under ventilation heat & Fittings

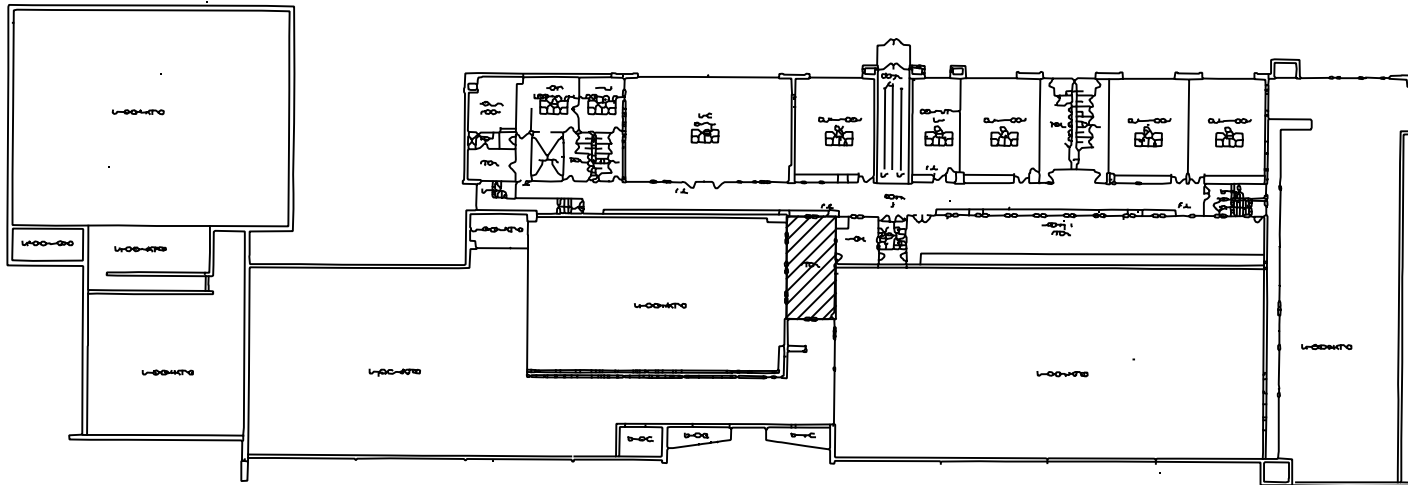
Abated:

Floor Tile/Mastic, Baseboard & Fittings in various location has been abated in the last three year

ASBESTOS REMAINING IN PLACE

The following map identifies the location where asbestos currently remains in the building.

ASBESTOS REMAINING IN THE BUILDING

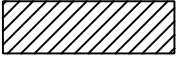


Lower Floor Plan

Not To Scale



LEGEND

Floor Tile & Mastic 

COMMENTS

This floor plan defines the extent of asbestos containing floor tile/mastic found in the building.

The floor tile/mastic is assumed to be asbestos containing

REV	BY	DATE	DESCRIPTION

ces **CAMPLIN**
 Environmental Services, inc
 9575 West Higgins Road, Suite 450
 Rosemont, Illinois 60018 (847) 292-1190

CLIENT:
Pennoyer Elementary School District 79
 5200 N. Cumberland Ave.
 Norridge, IL 60706


PROJECT:
AHERA 3 Year Reinspection
 Pennoyer Elementary School
 5200 N. Cumberland Ave.
 Norridge, Illinois 60706

FILE NAME : 20-026
 PROJECT NO 20-026
 DRWG : CESI
 DATE : March 2020

Floor Tile & Mastic

ASBESTOS REMAINING IN THE BUILDING

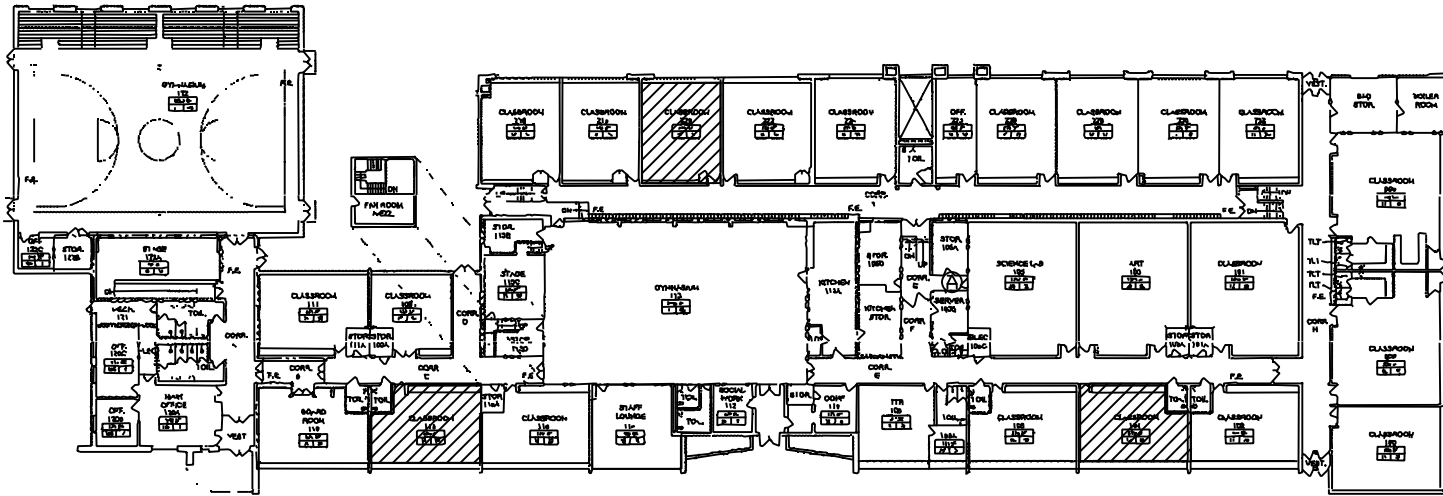
LEGEND

Floor Tile & Mastic 

COMMENTS

This floor plan defines the extent of asbestos containing floor tile/mastic found in the building.

The floor tile/mastic is assumed to be asbestos containing



First Floor Plan

Not To Scale



REV	BY	DATE	DESCRIPTION



CAMPLIN
 Environmental Services, inc
 9575 West Higgins Road, Suite 450
 Rosemont, Illinois 60018 (847) 292-1190

CLIENT:
Penneyer Elementary School District 79
 5200 N. Cumberland Ave.
 Norridge, IL 60706

PROJECT:
AHERA 3 Year Reinspection
 Penneyer Elementary School
 5200 N. Cumberland Ave.
 Norridge, Illinois 60706

FILE NAME : 20-026
 PROJECT NO 20-026
 DRWG : CES1
 DATE : March 2020

Floor Tile & Mastic

SECTION II

REINSPECTION PROTOCOL

SECTION II - REINSPECTION PROTOCOL

REINSPECTION PROTOCOL

The 3-Year Reinspection was performed by an individual licensed by the State as an Asbestos Building Inspector. The reinspection was performed in compliance with the building inspector responsibilities as defined by the Asbestos Hazard Emergency Response Act (AHERA) and State asbestos regulations for schools.

PRE-INSPECTION PROCEDURES

The following procedures are followed prior to performing an AHERA 3-year reinspection:

1. Schedule the reinspection for off-hours so as not to disturb normal building operations.
2. Obtain a copy of the current AHERA inspection and management plan including any updated records.
3. Obtain a blueprint or floor plan of the building.
4. Coordinate access to all areas of the building.

The following procedures are followed when performing an AHERA reinspection:

1. Define a secure work-area to perform paperwork.
2. Tour the building to familiarize yourself with the building layout.
3. Identify and reassess all homogeneous functional areas as identified in the original inspection report.
4. Document assessment data on the AHERA reinspection field sheets.
5. Inspect for mastic and/or dry-wall materials which may have been overlooked in the previous inspection.
6. Identify materials which may require additional bulk sampling.
7. Identify discrepancies between the original inspection and the reinspection.

The following procedures are followed when performing bulk sampling of suspected asbestos-containing materials.

1. Determine the number of samples needed.
2. Perform random sampling (if necessary).
3. Isolate the area of personnel.
4. Don protective equipment.
5. Spread a drop-cloth in the sample area.
6. Wet the sample area.
7. Extract sample using appropriate tools and procedures.
8. Place sample in labeled container.
9. Patch sample area.
10. Decontaminate sample tools.
11. HEPA vacuum immediate area.
12. Photograph sample site.
13. Dispose of contaminated waste.
14. Document inspection data on appropriate forms.

SECTION III

REINSPECTION DATA

AHERA REINSPECTION MATERIAL REASSESSMENT FORM

LEA: Pennoyer School District #79

BUILDING: Pennoyer School District
5200 North Cumberland Avenue
Norridge, Illinois 60706

DATE: March 19, 2020

INSPECTOR: Morgan Camplin

HOMOGENEOUS AREA #: BSR1

MATERIAL DESCRIPTION: 9" Green Floor Tile

MATERIAL TYPE: Miscellaneous

TYPE OF DAMAGE: N/A

% OF DAMAGE: N/A

POTENTIAL FOR:

DISTURBANCE: Low

VIBRATION: Low

AIR EROSION: Low

AHERA CLASSIFICATION: Potential for Damage

COMMENTS: Maintain in place.
Sample has been tested positive in main office under ventilation heat with carpet (2019)
Remaining Floor Tile & Mastic containing asbestos may possibly be found under old cabinet, under carpeting, ventilation heat and a/c & new flooring over old floor tile that are currently inaccessible
Various Location has been abated in the last three year

AHERA REINSPECTION MATERIAL REASSESSMENT FORM

LEA: Pennoyer School District #79

BUILDING: Pennoyer School District
5200 North Cumberland Avenue
Norridge, Illinois 60706

DATE: March 19, 2020

INSPECTOR: Morgan Camplin

HOMOGENEOUS AREA #: BSR2

MATERIAL DESCRIPTION: 9" Red Floor Tile

MATERIAL TYPE: Miscellaneous

TYPE OF DAMAGE: N/A

% OF DAMAGE: N/A

POTENTIAL FOR:

DISTURBANCE: Low

VIBRATION: Low

AIR EROSION: Low

AHERA CLASSIFICATION: Potential for Damage

COMMENTS: Maintain in place.
Remaining Floor Tile & Mastic containing asbestos may possibly be found under old cabinet, under carpeting, ventilation heat and a/c & new flooring over old floor tile that are currently inaccessible
Various Location has been abated in the last three year

AHERA REINSPECTION MATERIAL REASSESSMENT FORM

LEA: Pennoyer School District #79

BUILDING: Pennoyer School District
5200 North Cumberland Avenue
Norridge, Illinois 60706

DATE: March 19, 2020

INSPECTOR: Morgan Camplin

HOMOGENEOUS AREA #: BSR3

MATERIAL DESCRIPTION: Floor Tile Mastic

MATERIAL TYPE: Miscellaneous

TYPE OF DAMAGE: N/A

% OF DAMAGE: N/A

POTENTIAL FOR:

DISTURBANCE: Low

VIBRATION: Low

AIR EROSION: Low

AHERA CLASSIFICATION: Potential for Damage

COMMENTS: Maintain in place.
Sample has been tested positive in main office under ventilation heat with carpet (2019)
Remaining Floor Tile & Mastic containing asbestos may possibly be found under old cabinet, under carpeting, ventilation heat and a/c & new flooring over old floor tile that are currently inaccessible
Various Location has been abated in the last three year

AHERA REINSPECTION MATERIAL REASSESSMENT FORM

LEA: Pennoyer School District #79

BUILDING: Pennoyer School District
5200 North Cumberland Avenue
Norridge, Illinois 60706

DATE: March 19, 2020

INSPECTOR: Morgan Camplin

HOMOGENEOUS AREA #: SA6

MATERIAL DESCRIPTION: Floor Tile Mastic

MATERIAL TYPE: Miscellaneous

TYPE OF DAMAGE: N/A

% OF DAMAGE: N/A

POTENTIAL FOR:

DISTURBANCE: Low

VIBRATION: Low

AIR EROSION: Low

AHERA CLASSIFICATION: Potential for Damage

COMMENTS: Maintain in place.
Remaining Floor Tile & Mastic containing asbestos may possibly be found under old cabinet, under carpeting, ventilation heat and a/c & new flooring over old floor tile that are currently inaccessible
Various Location has been abated in the last three year

AHERA REINSPECTION MATERIAL REASSESSMENT FORM

LEA: Pennoyer School District #79

BUILDING: Pennoyer School District
5200 North Cumberland Avenue
Norridge, Illinois 60706

DATE: March 19, 2020

INSPECTOR: Morgan Camplin

HOMOGENEOUS AREA #: A

MATERIAL DESCRIPTION: Cementitious Pipe Corner

MATERIAL TYPE: Thermal System Insulation

TYPE OF DAMAGE: N/A

% OF DAMAGE: N/A

POTENTIAL FOR:

DISTURBANCE: Low

VIBRATION: Low

AIR EROSION: Low

AHERA CLASSIFICATION: Potential for Damage

COMMENTS: Maintain in place.
Sampled was Positive in 2019
Cementitious Pipe Corner containing asbestos may possibly
be found in the building that are currently inaccessible
Various Location has been abated March 2020

AHERA REINSPECTION MATERIAL REASSESSMENT FORM

LEA: Pennoyer School District #79

BUILDING: Pennoyer School District
5200 North Cumberland Avenue
Norridge, Illinois 60706

DATE: March 19, 2020

INSPECTOR: Morgan Camplin

HOMOGENEOUS AREA #: 8

MATERIAL DESCRIPTION: 9" Floor Tile With Red Stripes

MATERIAL TYPE: Miscellaneous

TYPE OF DAMAGE: N/A

% OF DAMAGE: N/A

POTENTIAL FOR:

DISTURBANCE: Low

VIBRATION: Low

AIR EROSION: Low

AHERA CLASSIFICATION: Potential for Damage

COMMENTS: Maintain in place.
Remaining Floor Tile & Mastic containing asbestos may possibly be found under old cabinet, under carpeting, ventilation heat and a/c that are currently inaccessible
Various Location has been abated in the last three year

AHERA REINSPECTION MATERIAL REASSESSMENT FORM

LEA: Pennoyer School District #79

BUILDING: Pennoyer School District
5200 North Cumberland Avenue
Norridge, Illinois 60706

DATE: March 19, 2020

INSPECTOR: Morgan Camplin

HOMOGENEOUS AREA #: SA8

MATERIAL DESCRIPTION: Floor Tile Mastic

MATERIAL TYPE: Miscellaneous

TYPE OF DAMAGE: N/A

% OF DAMAGE: N/A

POTENTIAL FOR:

DISTURBANCE: Low

VIBRATION: Low

AIR EROSION: Low

AHERA CLASSIFICATION: Potential for Damage

COMMENTS: Maintain in place.
Remaining Floor Tile & Mastic containing asbestos may possibly be found under old cabinet, under carpeting, ventilation heat and a/c that are currently inaccessible
Various Location has been abated in the last three year

AHERA REINSPECTION MATERIAL REASSESSMENT FORM

LEA: Pennoyer School District #79

BUILDING: Pennoyer School District
5200 North Cumberland Avenue
Norridge, Illinois 60706

DATE: March 19, 2020

INSPECTOR: Morgan Camplin

HOMOGENEOUS AREA #: 9

MATERIAL DESCRIPTION: 9" Beige Floor Tile

MATERIAL TYPE: Miscellaneous

TYPE OF DAMAGE: N/A

% OF DAMAGE: N/A

POTENTIAL FOR:

DISTURBANCE: Low

VIBRATION: Low

AIR EROSION: Low

AHERA CLASSIFICATION: Potential for Damage

COMMENTS: Maintain in place.
Remaining Floor Tile & Mastic containing asbestos may possibly be found under old cabinet, under carpeting, ventilation heat and a/c that are currently inaccessible
Various Location has been abated in the last three year

AHERA REINSPECTION MATERIAL REASSESSMENT FORM

LEA: Pennoyer School District #79

BUILDING: Pennoyer School District
5200 North Cumberland Avenue
Norridge, Illinois 60706

DATE: March 19, 2020

INSPECTOR: Morgan Camplin

HOMOGENEOUS AREA #: SA9

MATERIAL DESCRIPTION: Floor Tile Mastic

MATERIAL TYPE: Miscellaneous

TYPE OF DAMAGE: N/A

% OF DAMAGE: N/A

POTENTIAL FOR:

DISTURBANCE: Low

VIBRATION: Low

AIR EROSION: Low

AHERA CLASSIFICATION: Potential for Damage

COMMENTS: Maintain in place.
Remaining Floor Tile & Mastic containing asbestos may possibly be found under old cabinet, under carpeting, ventilation heat and a/c that are currently inaccessible
Various Location has been abated in the last three year

AHERA REINSPECTION MATERIAL REASSESSMENT FORM

LEA: Pennoyer School District #79

BUILDING: Pennoyer School District
5200 North Cumberland Avenue
Norridge, Illinois 60706

DATE: March 19, 2020

INSPECTOR: Morgan Camplin

HOMOGENEOUS AREA #: 10

MATERIAL DESCRIPTION: 12" Brown/Orange Floor Tile

MATERIAL TYPE: Miscellaneous

TYPE OF DAMAGE: N/A

% OF DAMAGE: N/A

POTENTIAL FOR:

DISTURBANCE: Low

VIBRATION: Low

AIR EROSION: Low

AHERA CLASSIFICATION: Potential for Damage

COMMENTS: Maintain in place.
Material is assumed to be asbestos-containing.
Remaining Floor Tile & Mastic containing asbestos may possibly be found under old cabinet, under carpeting, ventilation heat and a/c that are currently inaccessible
Various Location has been abated in the last three year

AHERA REINSPECTION MATERIAL REASSESSMENT FORM

LEA: Pennoyer School District #79

BUILDING: Pennoyer School District
5200 North Cumberland Avenue
Norridge, Illinois 60706

DATE: March 19, 2020

INSPECTOR: Morgan Camplin

HOMOGENEOUS AREA #: 11

MATERIAL DESCRIPTION: 9" Black/Brown Floor Tile

MATERIAL TYPE: Miscellaneous

TYPE OF DAMAGE: N/A

% OF DAMAGE: N/A

POTENTIAL FOR:

DISTURBANCE: Low

VIBRATION: Low

AIR EROSION: Low

AHERA CLASSIFICATION: Potential for Damage

COMMENTS: Maintain in place.
Remaining Floor Tile & Mastic containing asbestos may possibly be found under old cabinet, under carpeting, ventilation heat and a/c that are currently inaccessible
Various Location has been abated in the last three year

AHERA REINSPECTION MATERIAL REASSESSMENT FORM

LEA: Pennoyer School District #79

BUILDING: Pennoyer School District
5200 North Cumberland Avenue
Norridge, Illinois 60706

DATE: March 19, 2020

INSPECTOR: Morgan Camplin

HOMOGENEOUS AREA #: SA11

MATERIAL DESCRIPTION: Floor Tile Mastic

MATERIAL TYPE: Miscellaneous

TYPE OF DAMAGE: N/A

% OF DAMAGE: N/A

POTENTIAL FOR:

DISTURBANCE: Low

VIBRATION: Low

AIR EROSION: Low

AHERA CLASSIFICATION: Potential for Damage

COMMENTS: Maintain in place.
Material is assumed to be asbestos-containing.
Remaining Floor Tile & Mastic containing asbestos may possibly be found under old cabinet, under carpeting, ventilation heat and a/c that are currently inaccessible
Various Location has been abated in the last three year

AHERA REINSPECTION MATERIAL REASSESSMENT FORM

LEA: Pennoyer School District #79

BUILDING: Pennoyer School District
5200 North Cumberland Avenue
Norridge, Illinois 60706

DATE: March 19, 2020

INSPECTOR: Morgan Camplin

HOMOGENEOUS AREA #: 12

MATERIAL DESCRIPTION: Ceramic Tile

MATERIAL TYPE: Miscellaneous

TYPE OF DAMAGE: N/A

% OF DAMAGE: N/A

POTENTIAL FOR:

DISTURBANCE: Low

VIBRATION: Low

AIR EROSION: Low

AHERA CLASSIFICATION: Potential for Damage

COMMENTS: Maintain in place.
Sample has been tested Negative Staff Restroom &
Students restroom in 2019
Material is assumed to be asbestos-containing.
Remaining Floor Tile & Mastic containing asbestos may
possibly be found other various location, under old cabinet,
under carpeting, ventilation heat and a/c that are currently
inaccessible

AHERA REINSPECTION MATERIAL REASSESSMENT FORM

LEA: Pennoyer School District #79

BUILDING: Pennoyer School District
5200 North Cumberland Avenue
Norridge, Illinois 60706

DATE: March 19, 2020

INSPECTOR: Morgan Camplin

HOMOGENEOUS AREA #: SA12

MATERIAL DESCRIPTION: Floor Tile Mastic

MATERIAL TYPE: Miscellaneous

TYPE OF DAMAGE: N/A

% OF DAMAGE: N/A

POTENTIAL FOR:

DISTURBANCE: Low

VIBRATION: Low

AIR EROSION: Low

AHERA CLASSIFICATION: Potential for Damage

COMMENTS: Maintain in place.
Material is assumed to be asbestos-containing.
Sample has been tested Negative Staff Restroom &
Students restroom in 2019
Remaining Floor Tile & Mastic containing asbestos may
possibly be found other various location, under old cabinet,
under carpeting, ventilation heat and a/c that are currently
inaccessible

AHERA REINSPECTION MATERIAL REASSESSMENT FORM

LEA: Pennoyer School District #79

BUILDING: Pennoyer School District
5200 North Cumberland Avenue
Norridge, Illinois 60706

DATE: March 19, 2020

INSPECTOR: Morgan Camplin

HOMOGENEOUS AREA #: AA

MATERIAL DESCRIPTION: Chalkboard/Tackboards

MATERIAL TYPE: Miscellaneous

TYPE OF DAMAGE: N/A

% OF DAMAGE: N/A

POTENTIAL FOR:

DISTURBANCE: Low

VIBRATION: Low

AIR EROSION: Low

AHERA CLASSIFICATION: Potential for Damage

COMMENTS: Maintain in place.
Material is assumed to be asbestos-containing.

AHERA REINSPECTION MATERIAL REASSESSMENT FORM

LEA: Pennoyer School District #79

BUILDING: Pennoyer School District
5200 North Cumberland Avenue
Norridge, Illinois 60706

DATE: March 19, 2020

INSPECTOR: Morgan Camplin

HOMOGENEOUS AREA #: BB

MATERIAL DESCRIPTION: Asbestos Transite Fume Hood

MATERIAL TYPE: Miscellaneous

TYPE OF DAMAGE: N/A

% OF DAMAGE: N/A

POTENTIAL FOR:

DISTURBANCE: Low

VIBRATION: Low

AIR EROSION: High

AHERA CLASSIFICATION: Potential for Damage

COMMENTS: Maintain in place.
Material is assumed to be asbestos-containing.

AHERA REINSPECTION MATERIAL REASSESSMENT FORM

LEA: Pennoyer School District #79

BUILDING: Pennoyer School District
5200 North Cumberland Avenue
Norridge, Illinois 60706

DATE: March 19, 2020

INSPECTOR: Morgan Camplin

HOMOGENEOUS AREA #: CC

MATERIAL DESCRIPTION: Linoleum Countertops

MATERIAL TYPE: Miscellaneous

TYPE OF DAMAGE: N/A

% OF DAMAGE: N/A

POTENTIAL FOR:

DISTURBANCE: Low

VIBRATION: Low

AIR EROSION: Low

AHERA CLASSIFICATION: Potential for Damage

COMMENTS: Maintain in place.
Material is assumed to be asbestos-containing.

AHERA REINSPECTION MATERIAL REASSESSMENT FORM

LEA: Pennoyer School District #79

BUILDING: Pennoyer School District
5200 North Cumberland Avenue
Norridge, Illinois 60706

DATE: March 19, 2020

INSPECTOR: Morgan Camplin

HOMOGENEOUS AREA #: GG

MATERIAL DESCRIPTION: Grey Sink bowl Insulation

MATERIAL TYPE: Miscellaneous

TYPE OF DAMAGE: N/A

% OF DAMAGE: N/A

POTENTIAL FOR:

DISTURBANCE: Low

VIBRATION: Low

AIR EROSION: Low

AHERA CLASSIFICATION: Potential for Damage

COMMENTS: Maintain in place.
Material is assumed to be asbestos-containing.

AHERA REINSPECTION MATERIAL REASSESSMENT FORM

LEA: Pennoyer School District #79

BUILDING: Pennoyer School District
5200 North Cumberland Avenue
Norridge, Illinois 60706

DATE: March 19, 2020

INSPECTOR: Morgan Camplin

HOMOGENEOUS AREA #: HH

MATERIAL DESCRIPTION: Roof Drain Insulation

MATERIAL TYPE: Thermal System Insulation

TYPE OF DAMAGE: N/A

% OF DAMAGE: N/A

POTENTIAL FOR:

DISTURBANCE: Low

VIBRATION: Low

AIR EROSION: Low

AHERA CLASSIFICATION: Potential for Damage

COMMENTS: Maintain in place.
Material is assumed to be asbestos-containing.

AHERA REINSPECTION MATERIAL REASSESSMENT FORM

LEA: Pennoyer School District #79

BUILDING: Pennoyer School District
5200 North Cumberland Avenue
Norridge, Illinois 60706

DATE: March 19, 2020

INSPECTOR: Morgan Camplin

HOMOGENEOUS AREA #: II

MATERIAL DESCRIPTION: Drywall Material System

MATERIAL TYPE: Miscellaneous

TYPE OF DAMAGE: N/A

% OF DAMAGE: N/A

POTENTIAL FOR:

DISTURBANCE: Low

VIBRATION: Low

AIR EROSION: Low

AHERA CLASSIFICATION: Potential for Damage

COMMENTS: Maintain in place.
Sample has been tested Negative Staff Restroom &
Students restroom in 2019
Material is assumed to be asbestos-containing.

AHERA REINSPECTION MATERIAL REASSESSMENT FORM

LEA: Pennoyer School District #79

BUILDING: Pennoyer School District
5200 North Cumberland Avenue
Norridge, Illinois 60706

DATE: March 19, 2020

INSPECTOR: Morgan Camplin

HOMOGENEOUS AREA #: JJ

MATERIAL DESCRIPTION: Vinyl Baseboard

MATERIAL TYPE: Miscellaneous

TYPE OF DAMAGE: N/A

% OF DAMAGE: N/A

POTENTIAL FOR:

DISTURBANCE: Low

VIBRATION: Low

AIR EROSION: Low

AHERA CLASSIFICATION: Potential for Damage

COMMENTS: Maintain in place.
Material is assumed to be asbestos-containing.
Sample has been tested Negative Main Office in 2019
Remaining Baseboard containing asbestos may possibly be found other various location, under old cabinet, under carpeting, ventilation heat and a/c that are currently inaccessible
Various Location has been abated in the last three year

AHERA REINSPECTION MATERIAL REASSESSMENT FORM

LEA: Pennoyer School District #79

BUILDING: Pennoyer School District
5200 North Cumberland Avenue
Norridge, Illinois 60706

DATE: March 19, 2020

INSPECTOR: Morgan Camplin

HOMOGENEOUS AREA #: KK

MATERIAL DESCRIPTION: Roofing Felt

MATERIAL TYPE: Miscellaneous

TYPE OF DAMAGE: N/A

% OF DAMAGE: N/A

POTENTIAL FOR:

DISTURBANCE: Low

VIBRATION: Low

AIR EROSION: Low

AHERA CLASSIFICATION: Potential for Damage

COMMENTS: Maintain in place.
Material is assumed to be asbestos-containing.
Sample has been tested Negative Attic Roof above main
office area in 2019
Remaining Sealants containing asbestos may possibly be
found other various location and that are currently
inaccessible

AHERA REINSPECTION MATERIAL REASSESSMENT FORM

LEA: Pennoyer School District #79

BUILDING: Pennoyer School District
5200 North Cumberland Avenue
Norridge, Illinois 60706

DATE: March 19, 2020

INSPECTOR: Morgan Camplin

HOMOGENEOUS AREA #: DD

MATERIAL DESCRIPTION: Sealants

MATERIAL TYPE: Miscellaneous

TYPE OF DAMAGE: N/A

% OF DAMAGE: N/A

POTENTIAL FOR:

DISTURBANCE: Low

VIBRATION: Low

AIR EROSION: Low

AHERA CLASSIFICATION: Potential for Damage

COMMENTS: Maintain in place.
Material is assumed to be asbestos-containing.
Sample has been tested Negative Attic Roof above main office area in 2019
Remaining Sealants containing asbestos may possibly be found other various location and that are currently inaccessible

AHERA REINSPECTION MATERIAL REASSESSMENT FORM

LEA: Pennoyer School District #79

BUILDING: Pennoyer School District
5200 North Cumberland Avenue
Norridge, Illinois 60706

DATE: March 19, 2020

INSPECTOR: Morgan Camplin

HOMOGENEOUS AREA #: EE

MATERIAL DESCRIPTION: Flexible Duct Connectors

MATERIAL TYPE: Miscellaneous

TYPE OF DAMAGE: N/A

% OF DAMAGE: N/A

POTENTIAL FOR:

DISTURBANCE: Low

VIBRATION: Low

AIR EROSION: Low

AHERA CLASSIFICATION: Potential for Damage

COMMENTS: Maintain in place.
Material is assumed to be asbestos-containing.
Remaining Flexible Duct Connectors containing asbestos
may possibly be found other various location and that are
currently inaccessible

AHERA REINSPECTION MATERIAL REASSESSMENT FORM

LEA: Pennoyer School District #79

BUILDING: Pennoyer School District
5200 North Cumberland Avenue
Norridge, Illinois 60706

DATE: March 19, 2020

INSPECTOR: Morgan Camplin

HOMOGENEOUS AREA #: FF

MATERIAL DESCRIPTION: Firedoors

MATERIAL TYPE: Thermal Systems Insulation

TYPE OF DAMAGE: N/A

% OF DAMAGE: N/A

POTENTIAL FOR:

DISTURBANCE: Low

VIBRATION: Low

AIR EROSION: Low

AHERA CLASSIFICATION: Potential for Damage

COMMENTS: Maintain in place.
Material is assumed to be asbestos-containing.

SECTION IV

RESPONSE ACTION RECOMMENDATIONS

All response actions shall be implemented within one year of the reinspection date