

LEA Name : Littlestown Area SD
Address : 162 Newark St
Littlestown , PA 17340

County : Adams
AUN Number : 112015203
LEA Type : SD

Annual Financial Report Accuracy Certification Statement

For Fiscal Year Ending
6/30/2017

Pennsylvania Department of Education
&
Office of Comptroller Operations

PDE-2056: Intermediate Unit
PDE-2057: School District, AVTS/CTC, Charter School,
and Special Program Jointure

CERTIFICATION: By signing this page I agree that the electronic data submitted is a complete and accurate statement of the financial operations and status of the local education agency for the fiscal year. It has been prepared in accordance with generally accepted accounting principles and established Commonwealth of PA reporting guidelines.



Chief School Administrator Signature

October 31, 2017

Date



Board Secretary Signature

October 31, 2017

Date

Michael Statler

Contact Person

(717)359-4146 Ext :1243

Contact Person Telephone Number

statlerm@lasd.k12.pa.us

Contact Person E-mail Address

Contact Person Fax Number

Audit Certification
Annual Financial Report:
For Fiscal Year Ending **6/30/2017**
(Pursuant to PA School Code Section 218(b))

LEA Name : Littlestown Area SD
AUN Number : 112015203
County : Adams

Audit Certification Due: 12/31/2017


This certification is applicable to the Annual Financial Report data submitted through the Consolidated Financial Reporting System on: October 31, 2017
Date

Auditing Firm: Greenawalt & Company, P.C.
400 West Main Street
Mechanicsburg, PA 17055

Auditor Contact Name: Ronald Morgan
Auditor Phone: 717-766-4763
Auditor E-mail: rsm@greenawalt.cc

CERTIFICATION: By signing this page I agree that the financial statements of the school have been properly audited as noted above pursuant to Article XXIV, and in the auditor's professional opinion, the Annual Financial Report (PDE-2057) submitted on the date referenced is materially consistent with the audited financial statements.

Chief School Administrator



Signature 10/31/2017
Date

Board Secretary



Signature 10/31/2017
Date

Michael Statler

Contact Person

statlerm@lasd.k12.pa.us

Contact Person E-mail Address

(717)359-4146 Ext :1243

Contact Person Telephone Number

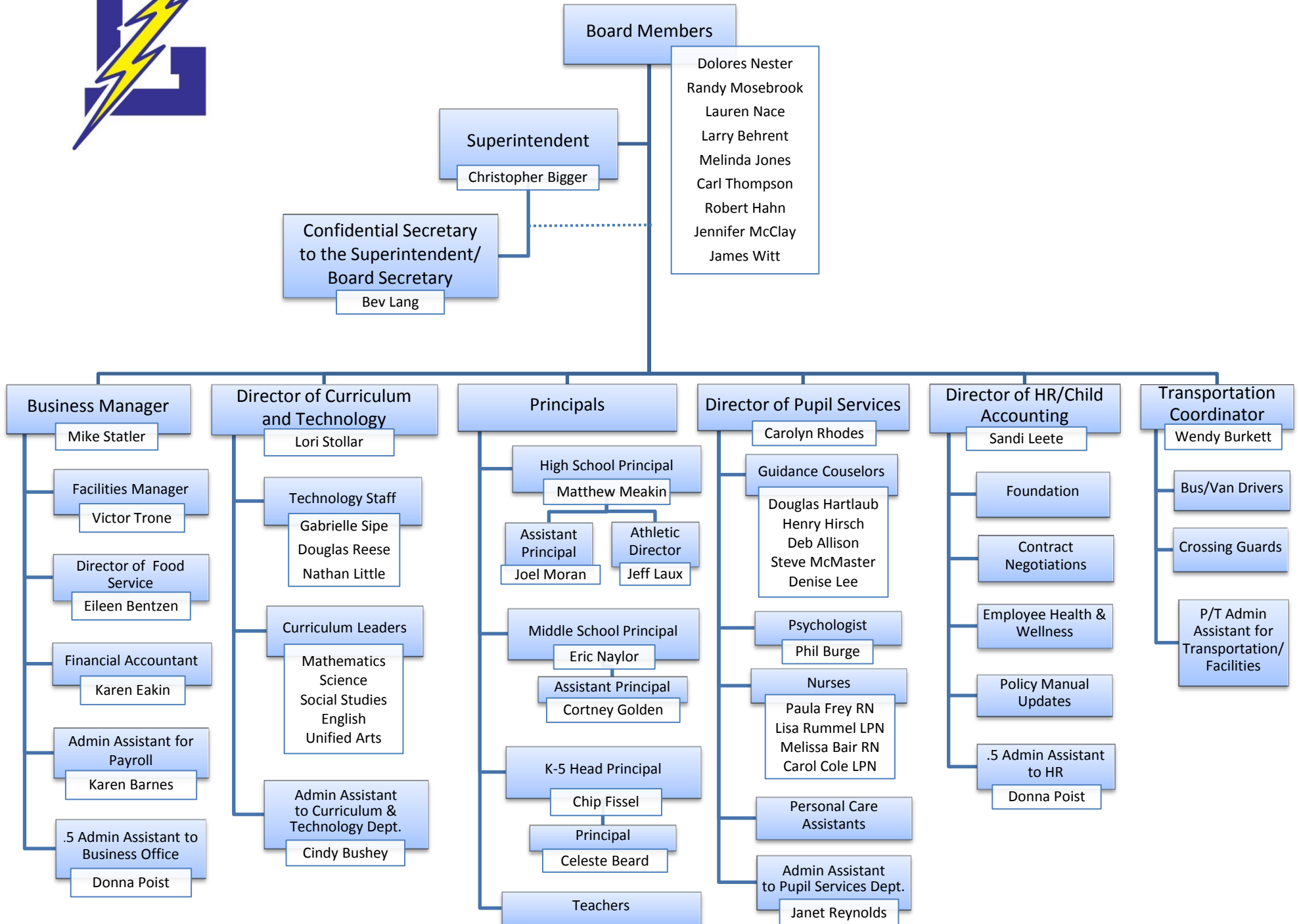
Contact Person Fax Number



LITTLESTOWN AREA SCHOOL DISTRICT

2016-2017 School Year

Board Approved 6-27-16



<u>Val Number</u>	<u>Description</u>	<u>Justification</u>
16015	<p>REP Fund 51: Object 300 is greater than object 500. Purchased services for food service contracted services should be coded to objects 571 and 572. Correct or enter a justification.</p> <p>REP Fund 51 Object 300: \$80.00 REP Fund 51 Object 500: \$64.00</p>	LASD does not contract food service. Object 300 was for staff training and object 500 was for employee travel.
30600	<p>Revenue Detail: Tax Revenue Data must be reported consistently for current and prior year. Correct the data or enter a justification.</p> <p>6152, Current AFR Rev Detail: \$0.00 6152, Prior AFR Rev Detail: \$1,286,917.24</p>	In November 2015, LASD's voters elected to eliminate the Occupation Assessment Tax and move to a higher Earned Income Tax rate - .5% to 1.1%. This change took effect on July 1, 2016.
30665	<p>Revenue Detail: Current Tax Revenue amount cannot exceed 50% variance from prior year amount. Correct the data or enter a justification.</p> <p>6151, Current AFR Rev Detail: \$3,454,147.24 6151, Prior AFR Rev Detail: \$1,800,326.80</p>	In November 2015, LASD's voters elected to eliminate the Occupation Assessment Tax and move to a higher Earned Income Tax rate - .5% to 1.1%. This change took effect on July 1, 2016.
30675	<p>Revenue Detail: Current Tax Revenue amount cannot exceed 50% variance from prior year amount. Correct the data or enter a justification.</p> <p>6152, Current AFR Rev Detail: \$0.00 6152, Prior AFR Rev Detail: \$1,286,917.24</p>	In November 2015, LASD's voters elected to eliminate the Occupation Assessment Tax and move to a higher Earned Income Tax rate - .5% to 1.1%. This change took effect on July 1, 2016.
42420	<p>Expenditure Detail: Total current year 2700-513 expenditure varies from prior year by 10%. Correct the data or enter a justification.</p> <p>2700-513, AFR Exp Detail: \$582,714.31 2700-513, PY AFR Amount: \$404,747.34</p>	The increase was due to the district electing to contract their non-public runs and career tech run.
50281	<p>SOIN: Current Year AFR amount must equal Prior Year AFR amount.</p> <p>SOIN, Beg Bal, Other Long Term Debt: \$1,029,558.00 PY Ending Bal, Other Long Term Debt: \$271,800.00</p>	Increase was due to not including the unamortized bond premiums in the prior year.
50450	<p>SESS - 2350 Legal and Accounting Services: SESS Schedule amounts for Special Education vary from prior year by 40% or more. Correct the data or enter a justification.</p> <p>SESS Schedule 2350: \$11,165.90 Prior Year SESS Schedule 2350: \$3,712.25</p>	LASD had a greater need to seek council on a number of high need Special Education students.

Amounts Expressed in Whole Dollars	<u>General Fund</u> <u>(10)</u>	<u>Public Purpose Trust</u> <u>(27)</u>	<u>Other Compt Approved</u> <u>(28)</u>	<u>Athletic / Activity</u> <u>(29)</u>	<u>Capital Reserve (690.</u> <u>1850)</u> <u>(31)</u>
Assets And Deferred Outflows Of Resources					
Assets					
0100 Cash and Cash Equivalents	7,666,003				
0110 Investments	252,288				
0120 Taxes Receivable	1,094,000				
0130 Due From Other Funds	1,678				
0141 Due From Other Governments	642,896				
0142 State Revenue Receivable	943,979				
0143 Federal Revenue Receivable	49,952				
0145 Other Intergovernmental Revenue Receivable					
0146 Due from Primary Government					
0147 Due from Component Unit					
0150 Other Receivables	13,642				
0170 Inventories					
0180 Prepaid Expenses (Expenditures)	1,200,000				
0190 Other Current Assets					
Total Assets	\$11,864,438				
0910 Deferred Outflows of Resources					
Total Assets And Deferred Outflows Of Resources	\$11,864,438				

Amounts Expressed in Whole Dollars

	<u>Capital Reserve (1431)</u> <u>(32)</u>	<u>Other Capital Projects</u> <u>Fund</u> <u>(39)</u>	<u>Debt Service</u> <u>(40)</u>	<u>Permanent</u> <u>(90)</u>	<u>Total Governmental</u> <u>Funds</u>
Assets And Deferred Outflows Of Resources					
Assets					
0100 Cash and Cash Equivalents	294,100	5,329,421			13,289,524
0110 Investments					252,288
0120 Taxes Receivable					1,094,000
0130 Due From Other Funds	1,000,000				1,001,678
0141 Due From Other Governments					642,896
0142 State Revenue Receivable					943,979
0143 Federal Revenue Receivable					49,952
0145 Other Intergovernmental Revenue Receivable					
0146 Due from Primary Government					
0147 Due from Component Unit					
0150 Other Receivables					13,642
0170 Inventories					
0180 Prepaid Expenses (Expenditures)					1,200,000
0190 Other Current Assets					
Total Assets	\$1,294,100	\$5,329,421			\$18,487,959
0910 Deferred Outflows of Resources					
Total Assets And Deferred Outflows Of Resources	\$1,294,100	\$5,329,421			\$18,487,959

Amounts Expressed in Whole Dollars

	<u>General Fund</u> <u>(10)</u>	<u>Public Purpose Trust</u> <u>(27)</u>	<u>Other Compt Approved</u> <u>(28)</u>	<u>Athletic / Activity</u> <u>(29)</u>	<u>Capital Reserve (690.</u> <u>1850)</u> <u>(31)</u>
Liabilities And Deferred Inflows Of Resources And Fund Balances					
Liabilities					
0400 Due to Other Funds	1,000,000				
0411 Due to Other Governments					
0412 Due to Primary Government					
0413 Due to Component Unit					
0420 Accounts Payable	372,739				
0430 Contracts Payable					
0440 Current Portion of Long-Term Debt					
0450 Short-Term Payables					
0461 Accrued Salaries and Benefits	1,396,453				
0462 Payroll Deductions and Withholding	1,256,395				
0480 Unearned Revenues	1,720				
0490 Other Current Liabilities					
Total Liabilities	\$4,027,307				
0950 Deferred Inflows of Resources	949,000				
Fund Balances					
0810 Nonspendable Fund Balance	1,200,000				
0820 Restricted Fund Balance					
0830 Committed Fund Balance	3,200,000				
0840 Assigned Fund Balance					
0850 Unassigned Fund Balance	2,488,131				
Total Fund Balances	\$6,888,131				
Total Liabilities, Deferred Inflows Of Resources And Fund Balances	\$11,864,438				

Amounts Expressed in Whole Dollars

	<u>Capital Reserve (1431)</u> <u>(32)</u>	<u>Other Capital Projects</u> <u>Fund</u> <u>(39)</u>	<u>Debt Service</u> <u>(40)</u>	<u>Permanent</u> <u>(90)</u>	<u>Total Governmental</u> <u>Funds</u>
Liabilities And Deferred Inflows Of Resources And Fund Balances					
Liabilities					
0400 Due to Other Funds					1,000,000
0411 Due to Other Governments					
0412 Due to Primary Government					
0413 Due to Component Unit					
0420 Accounts Payable		640,325			1,013,064
0430 Contracts Payable					
0440 Current Portion of Long-Term Debt					
0450 Short-Term Payables					
0461 Accrued Salaries and Benefits					1,396,453
0462 Payroll Deductions and Withholding					1,256,395
0480 Unearned Revenues					1,720
0490 Other Current Liabilities					
Total Liabilities		\$640,325			\$4,667,632
0950 Deferred Inflows of Resources					949,000
Fund Balances					
0810 Nonspendable Fund Balance					1,200,000
0820 Restricted Fund Balance		4,689,096			4,689,096
0830 Committed Fund Balance	1,294,100				4,494,100
0840 Assigned Fund Balance					
0850 Unassigned Fund Balance					2,488,131
Total Fund Balances	\$1,294,100	\$4,689,096			\$12,871,327
Total Liabilities, Deferred Inflows Of Resources And Fund Balances	\$1,294,100	\$5,329,421			\$18,487,959

Amounts Expressed in Whole Dollars	<u>General Fund</u> <u>(10)</u>	<u>Public Purpose Trust</u> <u>(27)</u>	<u>Other Compt Approved</u> <u>(28)</u>	<u>Athletic / Activity</u> <u>(29)</u>	<u>Capital Reserve (690.</u> <u>1850)</u> <u>(31)</u>
Revenues					
6000 Revenue from Local Sources	18,353,363				
7000 Revenue from State Sources	12,367,376				
8000 Revenue from Federal Sources	416,150				
Total Revenues	\$31,136,889				
Expenditures					
1000 Instruction	19,245,996				
2000 Support Services	7,634,306				
3000 Operation of Non-Instructional Services	538,305				
4000 Facilities Acquisition, Construction and Improvement Services					
5110 Debt Service	1,869,920				
5130 Refund of Prior Year Revenues / Receipts					
Total Expenditures	\$29,288,527				
Excess (Deficiency) Of Revenues Over Expenditures	\$1,848,362				
Other Financing Sources (Uses)					
9110 Face Value of Bonds Issued					
9120 Proceeds from Refunding of Bonds					
9130 Bond Premiums					
9200 Proceeds from Extended-Term Financing	196,819				
9300 Interfund Transfers - IN					
9400 Sale of or Compensation for Loss of Fixed Assets					
9710 Transfers from Component Units					
9720 Transfers from Primary Governments					
9910 Other Financing Sources Not Listed in the 9000 Series					
9990 Insurance Recoveries					
5120 Debt Service – Refunded Bonds					
5150 Bond Discounts					
5200 Interfund Transfers – Out	1,301,931				
5300 Transfers Out to Component Units/Primary Governments					
Total Other Financing Sources (Uses)	(\$1,105,112)				

Amounts Expressed in Whole Dollars	<u>Capital Reserve (1431)</u> <u>(32)</u>	<u>Other Capital Projects</u> <u>Fund</u> <u>(39)</u>	<u>Debt Service</u> <u>(40)</u>	<u>Permanent</u> <u>(90)</u>	<u>Total Governmental</u> <u>Funds</u>
Revenues					
6000 Revenue from Local Sources	984	59,862			18,414,209
7000 Revenue from State Sources					12,367,376
8000 Revenue from Federal Sources					416,150
Total Revenues	\$984	\$59,862			\$31,197,735
Expenditures					
1000 Instruction		47,501			19,293,497
2000 Support Services	177,052	7,968,545			15,779,903
3000 Operation of Non-Instructional Services		229,008			767,313
4000 Facilities Acquisition, Construction and Improvement Services					
5110 Debt Service					1,869,920
5130 Refund of Prior Year Revenues / Receipts					
Total Expenditures	\$177,052	\$8,245,054			\$37,710,633
Excess (Deficiency) Of Revenues Over Expenditures	(\$176,068)	(\$8,185,192)			(\$6,512,898)
Other Financing Sources (Uses)					
9110 Face Value of Bonds Issued					
9120 Proceeds from Refunding of Bonds					
9130 Bond Premiums					
9200 Proceeds from Extended-Term Financing					196,819
9300 Interfund Transfers - IN	1,230,000				1,230,000
9400 Sale of or Compensation for Loss of Fixed Assets					
9710 Transfers from Component Units					
9720 Transfers from Primary Governments					
9910 Other Financing Sources Not Listed in the 9000 Series					
9990 Insurance Recoveries					
5120 Debt Service – Refunded Bonds					
5150 Bond Discounts					
5200 Interfund Transfers – Out					1,301,931
5300 Transfers Out to Component Units/Primary Governments					
Total Other Financing Sources (Uses)	\$1,230,000				\$124,888

Amounts Expressed in Whole Dollars	<u>General Fund</u> <u>(10)</u>	<u>Public Purpose Trust</u> <u>(27)</u>	<u>Other Compt Approved</u> <u>(28)</u>	<u>Athletic / Activity</u> <u>(29)</u>	<u>Capital Reserve</u> <u>(690.</u> <u>1850)</u> <u>(31)</u>
Special And Extraordinary Items					
9920 Special Items – Gains					
9930 Extraordinary Items – Gains					
5520 Special Items – Losses					
5530 Extraordinary Items – Losses					
Net Change In Fund Balances	\$743,250				
Fund Balance					
0001 Fund Balance - Beginning of Fiscal Year	6,144,881				
Fund Balance - End Of Year	\$6,888,131				

Amounts Expressed in Whole Dollars	<u>Capital Reserve (1431)</u> <u>(32)</u>	<u>Other Capital Projects</u> <u>Fund</u> <u>(39)</u>	<u>Debt Service</u> <u>(40)</u>	<u>Permanent</u> <u>(90)</u>	<u>Total Governmental</u> <u>Funds</u>
Special And Extraordinary Items					
9920 Special Items – Gains					
9930 Extraordinary Items – Gains					
5520 Special Items – Losses					
5530 Extraordinary Items – Losses					
Net Change In Fund Balances	\$1,053,932	(\$8,185,192)			(\$6,388,010)
Fund Balance					
0001 Fund Balance - Beginning of Fiscal Year	240,167	12,874,288			19,259,336
Fund Balance - End Of Year	\$1,294,099	\$4,689,096			\$12,871,326

Amounts Expressed in Whole Dollars	<u>Food Service</u> <u>(51)</u>	<u>Child Care</u> <u>Operations</u> <u>(52)</u>	<u>Other Enterprise</u> <u>(58)</u>	<u>TOTAL</u>	<u>Internal Service</u> <u>(60)</u>
Assets And Deferred Outflows Of Resources					
Current Assets					
0100 Cash and Cash Equivalents	113,196			113,196	
0110 Investments					
0130 Due From Other Funds					
0141 Due From Other Governments					
0142 State Revenue Receivable					
0143 Federal Revenue Receivable					
0146 Due from Primary Government					
0147 Due from Component Unit					
0150 Other Receivables	408			408	
0170 Inventories	17,266			17,266	
0180 Prepaid Expenses (Expenditures)					
0190 Other Current Assets					
Total Current Assets	\$130,870			\$130,870	
Noncurrent Assets					
0211 Land					
0212 Site Improvements (Net)					
0220 Buildings and Building Improvements (Net)					
0230 Machinery, Equipment and Furniture (Net)	67,143			67,143	
0250 Construction in Progress					
0260 Long Term Prepayments					
0290 Other Noncurrent Assets					
Total Noncurrent Assets	\$67,143			\$67,143	
0910 Deferred Outflows of Resources	295,141			295,141	
Total Assets And Deferred Outflows Of Resources	\$493,154			\$493,154	

Amounts Expressed in Whole Dollars	<u>Food Service</u> (51)	<u>Child Care</u> <u>Operations</u> (52)	<u>Other Enterprise</u> (58)	<u>TOTAL</u>	<u>Internal Service</u> (60)
Liabilities And Deferred Inflows Of Resources And Net Position					
Current Liabilities					
0400 Due to Other Funds	1,678			1,678	
0411 Due to Other Governments					
0413 Due to Component Unit					
0420 Accounts Payable					
0430 Contracts Payable					
0440 Current Portion of Long-Term Debt					
0450 Short-Term Payables					
0461 Accrued Salaries and Benefits					
0462 Payroll Deductions and Withholding					
0480 Unearned Revenues	14,962			14,962	
0490 Other Current Liabilities					
Total Current Liabilities	\$16,640			\$16,640	
Noncurrent Liabilities					
0510 Bonds Payable					
0520 Extended-Term Financing Agreements Payable					
0530 Lease-Purchase Obligations					
0540 Accumulated Compensated Absences	25,425			25,425	
0550 Authority Lease Obligations					
0560 Other Post-Employment Benefits (OPEB)	8,547			8,547	
0570 Net Pension Liability	1,186,764			1,186,764	
0599 Other Noncurrent Liabilities					
Total Noncurrent Liabilities	\$1,220,736			\$1,220,736	
Total Liabilities	\$1,237,376			\$1,237,376	
0950 Deferred Inflows of Resources	11,446			11,446	
Net Position					
0791 Net Investment in Capital Assets	67,143			67,143	
0008 Restricted Net Position (0792 – 0798)					
0799 Unrestricted Net Position	(822,811)			(822,811)	
Total Net Position	(\$755,668)			(\$755,668)	
Total Liabilities And Deferred Inflows Of Resources And Net Position	\$493,154			\$493,154	

Amounts Expressed in Whole Dollars	<u>Food Service</u> <u>(51)</u>	<u>Child Care Operations</u> <u>(52)</u>	<u>Other Enterprise</u> <u>(58)</u>	<u>TOTAL</u>	<u>Internal Service</u> <u>(60)</u>
Operating Revenues					
6600 Food Service Revenue	357,640			357,640	
0071 Charges for Services					
0072 Other Operating Revenue					
Total Operating Revenues	\$357,640			\$357,640	
Operating Expenses					
100 Personnel Services – Salaries	372,618			372,618	
200 Personnel Services – Employee Benefits	270,964			270,964	
300 Purchased Professional and Technical Services	80			80	
400 Purchased Property Services	5,119			5,119	
500 Other Purchased Services	64			64	
600 Supplies	354,075			354,075	
740 Depreciation	26,428			26,428	
810 Dues and Fees	694			694	
890 Miscellaneous Expenditures					
Total Operating Expenses	\$1,030,042			\$1,030,042	
Operating Income (Loss)	(\$672,402)			(\$672,402)	
Non Operating Revenues (Expenses)					
6500 Earnings on Investments	425			425	
6920 Contributions and Donations from Private Sources					
6930 Gains or Losses on Sale of Fixed Assets					
6991 Refunds of a Prior Year Expenditure					
7000 Revenue from State Sources	96,697			96,697	
8000 Revenue from Federal Sources	461,236			461,236	
820 Claims and Judgments Against the LEA					
830 Interest					
TOTAL Non Operating Revenues (Expenses)	\$558,358			\$558,358	
Income (Loss) Before Contributions And Transfers	(\$114,044)			(\$114,044)	

Amounts Expressed in Whole Dollars	<u>Food Service</u> <u>(51)</u>	<u>Child Care Operations</u> <u>(52)</u>	<u>Other Enterprise</u> <u>(58)</u>	<u>TOTAL</u>	<u>Internal Service</u> <u>(60)</u>
Contributions, Transfers, and Special and Extraordinary Items					
5200 Interfund Transfers – Out					
5300 Transfers Out to Component Units/Primary Governments					
5520 Special Items – Losses					
5530 Extraordinary Items – Losses					
9300 Interfund Transfers - IN	71,931			71,931	
9500 Capital Contributions					
9700 Transfers IN From Component Units/Primary Governments					
9920 Special Items – Gains					
9930 Extraordinary Items – Gains					
Change In Net Position	(\$42,113)			(\$42,113)	
0002 Net Position - Beginning of Fiscal Year	(713,555)			(713,555)	
0003 Accounting Changes / Residual Equity Transfers					
Net Position - End Of Year	(\$755,668)			(\$755,668)	

Amounts Expressed in Whole Dollars	<u>Food Service</u> <u>(51)</u>	<u>Child Care Operations</u> <u>(52)</u>	<u>Other Enterprise</u> <u>(58)</u>	<u>TOTAL</u>	<u>Internal Service(60)</u>
Cash Flows From Operating Activities					
0011 Cash Receipts From Users	359,209			359,209	
0012 Cash Receipts From Assessments Made to Other Funds					
0013 Cash Receipts From Earnings on Investments					
0014 Cash Receipts From Other Operating Revenue					
0015 Cash Payments To Employees For Services	592,398			592,398	
0016 Cash Payments For Insurance Claims					
0017 Cash Payments To Suppliers For Goods and Services	282,992			282,992	
0018 Cash Payments For Other Operating Expenses					
Net Cash Provided By (Used For) Operating Activities	(\$516,181)			(\$516,181)	
Cash Flows From Non-Capital Financing Activities					
0021 Receipts From Local Sources - 6000					
0022 Receipts From State Sources - 7000	99,849			99,849	
0023 Receipts From Federal Sources -8000	432,447			432,447	
0024 Notes and Loans Received (Repaid)					
0025 Interest Paid on Notes/Loans - 5100-830					
0026 Operating Transfers In (Out)/Residual Equity Trans					
0027 Operating Transfers In (Out) Primary Government / Comp Unit	4,071			4,071	
0028 Receipts From Refund of Prior Year Expenditures - 6991					
0029 Special and Extraordinary Gains (losses)					
Net Cash Prov By (Used for) Non-Capital Financing Activities	\$536,367			\$536,367	
Cash Flows From Capital and Related Financing Activities					
0031 Payments For Fac Acq, Const, and Imp - 4000					
0032 Gain / (Loss) on Sale of Fixed Assets - 6930					
0033 Proceeds From Extended Term Financing - 9200					
0034 Principal Paid on Financing Agreements					
0035 Interest Paid on Financing Agreements - 5100-830					
0036 (Inc) Dec in Contributed Capital					
Net Cash Prov By (Used for) Capital and Related Financing Activities					
Cash Flows From Investing Activities					
0041 Earnings on Investments - 6500	425			425	
0042 Purchase of Inv Securities / Deposits to Inv Pools					
0043 Receipts From Investment Pool Withdrawals					
0044 Proceeds from Sale and Maturity of Inv Securities					
0045 Loans Received (Paid)					
Net Cash Prov By (Used for) Investing Activities	\$425			\$425	

	<u>Food Service</u> <u>(51)</u>	<u>Child Care Operations</u> <u>(52)</u>	<u>Other Enterprise</u> <u>(58)</u>	<u>TOTAL</u>	<u>Internal Service</u> <u>(60)</u>
Net Increase (Decrease) in Cash Flows	20,611			20,611	
0004 Cash and Cash Equivalents Beginning of Year	92,585			92,585	
Cash and Cash Equivalents at Year End	\$113,196			\$113,196	
<hr/>					
Reconciliation of Operating Income (Loss) To Net Cash Provided by (Used For) Operating Activities					
0005 Operating Income (Loss) per REP	(672,402)			(672,402)	
Adjustments					
0051 Depreciation and Net Amortization	26,428			26,428	
0052 Provision for Uncollectible Accounts					
0053 Other Adjustments	75,247			75,247	
Effect of Changes in Assets, Liabilities, Deferred Outflows and Deferred Inflows					
0054 (Inc) Dec In Accounts Receivable (0120-0150)	664			664	
0055 Advances to Other Funds (0160)					
0056 (Inc) Dec in Inventories (0170)	1,793			1,793	
0057 (Inc) Dec in Prepaid Expenses (0180)					
0058 (Inc) Dec in Other Current or Noncurrent Assets					
0064 Deferred Outflows (0910)					
0059 Inc (Dec) in Accounts Payable (0400-0450)					
0060 Inc (Dec) in Accrued Salaries/Benefits (0461)					
0065 Inc (Dec) in Net Pension Liabilities (0570)					
0066 Inc (Dec) in Other Postemp Benefit Oblig (0560)					
0061 Inc (Dec) in Payroll Deductions/Withholding (0462)					
0062 Inc (Dec) in Unearned Revenue (0480)	905			905	
0063 Inc (Dec) in Other Current or Noncurrent Liabilities	51,184			51,184	
0067 Deferred Inflows (0950)					
Total Adjustments	\$156,221			\$156,221	
Cash Provided By (Used for) Total	(\$516,181)			(\$516,181)	

COMBINED STATEMENT OF CASH FLOWS
SCHEDULE OF NONCASH INVESTING, CAPITAL, AND FINANCING ACTIVITIES

Explanation of Transaction and Balance Sheet Effect	Amount
Total	

LEA : 112015203 Littlestown Area SD

Printed 10/31/2017 3:16:54 PM

Amounts Expressed in Whole Dollars	<u>Private Purpose Trust</u> <u>(71)</u>	<u>Investment Trust</u> <u>(72)</u>	<u>Pension Trust</u> <u>(73)</u>	<u>Activity</u> <u>(81)</u>
Assets And Deferred Outflows Of Resources				
Assets				
0100 Cash and Cash Equivalents				97,716
0110 Investments				70,712
0130 Due From Other Funds				
0147 Due from Component Unit				
0150 Other Receivables				1,065
0170 Inventories				
0180 Prepaid Expenses (Expenditures)				
0190 Other Current Assets				
0220 Buildings and Building Improvements (Net)				
0230 Machinery, Equipment and Furniture (Net)				
Total Assets				\$169,493
0910 Deferred Outflows of Resources				
Total Assets And Deferred Outflows Of Resources				\$169,493

LEA : 112015203 Littlestown Area SD

Printed 10/31/2017 3:16:54 PM

Amounts Expressed in Whole Dollars	<u>Other Agency</u> <u>(89)</u>	<u>Discrete Component Units</u> <u>(98)</u>	<u>Discrete Component Units</u> <u>(99)</u>	<u>Total Fiduciary Funds</u>
Assets And Deferred Outflows Of Resources				
Assets				
0100 Cash and Cash Equivalents				97,716
0110 Investments				70,712
0130 Due From Other Funds				
0147 Due from Component Unit				
0150 Other Receivables				1,065
0170 Inventories				
0180 Prepaid Expenses (Expenditures)				
0190 Other Current Assets				
0220 Buildings and Building Improvements (Net)				
0230 Machinery, Equipment and Furniture (Net)				
Total Assets				\$169,493
0910 Deferred Outflows of Resources				
Total Assets And Deferred Outflows Of Resources				\$169,493

LEA : 112015203 Littlestown Area SD

Printed 10/31/2017 3:16:54 PM

Amounts Expressed in Whole Dollars	<u>Private Purpose Trust</u> (71)	<u>Investment Trust</u> (72)	<u>Pension Trust</u> (73)	<u>Activity</u> (81)
Liabilities, Deferred Inflows Of Resources And Net Position				
Liabilities				
0400 Due to Other Funds				
0411 Due to Other Governments				
0412 Due to Primary Government				
0413 Due to Component Unit				
0420 Accounts Payable				
0430 Contracts Payable				
0450 Short-Term Payables				
0461 Accrued Salaries and Benefits				
0462 Payroll Deductions and Withholding				
0480 Unearned Revenues				
0490 Other Current Liabilities				169,493
Total Liabilities				\$169,493
0950 Deferred Inflows of Resources				
Net Position				
0791 Net Investment in Capital Assets				
0009 Restricted Net Position (0792 – 0798)				
0799 Unrestricted Net Position				
Total Net Position				
Total Liabilities, Deferred Inflows Of Resources And Net Position				\$169,493

LEA : 112015203 Littlestown Area SD

Printed 10/31/2017 3:16:54 PM

Amounts Expressed in Whole Dollars

<u>Other Agency</u>	<u>Discrete Component Units</u>	<u>Discrete Component Units</u>	<u>Total Fiduciary Funds</u>
(89)	(98)	(99)	

Liabilities, Deferred Inflows Of Resources And Net Position

Liabilities

0400 Due to Other Funds			
0411 Due to Other Governments			
0412 Due to Primary Government			
0413 Due to Component Unit			
0420 Accounts Payable			
0430 Contracts Payable			
0450 Short-Term Payables			
0461 Accrued Salaries and Benefits			
0462 Payroll Deductions and Withholding			
0480 Unearned Revenues			
0490 Other Current Liabilities			169,493

Total Liabilities			\$169,493
--------------------------	--	--	------------------

0950 Deferred Inflows of Resources

Net Position

0791 Net Investment in Capital Assets	
0009 Restricted Net Position (0792 – 0798)	
0799 Unrestricted Net Position	

Total Net Position			
---------------------------	--	--	--

Total Liabilities, Deferred Inflows Of Resources And Net Position			\$169,493
--	--	--	------------------

	<u>Revenue Reported In Current Year</u>	<u>Current Year Tax Accrual</u>	<u>Prior Year Tax Accrual</u>	<u>Taxes Collected In Current Year</u>
<u>Revenue from Local Sources</u>				
6111 Current Real Estate Taxes	13,344,822.49			13,344,822.49
6112 Interim Real Estate Taxes	86,783.95			86,783.95
6113 Public Utility Realty Taxes	18,088.37			18,088.37
6120 Current Per Capita Taxes, Section 679	44,973.10			44,973.10
6141 Current Act 511 Per Capita Taxes	44,973.10			44,973.10
6143 Current Act 511 Local Services Taxes	25,037.03			25,037.03
6151 Current Act 511 Earned Income Taxes	3,454,147.24			3,454,147.24
6153 Current Act 511 Real Estate Transfer Taxes	293,604.83			293,604.83
6411 Delinquent Real Estate Taxes	455,729.69	10,500.00		445,229.69
6420 Delinquent Per Capita Taxes, Section 679	6,121.19			6,121.19
6440 Delinquent Local Enabling Taxes - Flat Rate Assessments	6,121.19			6,121.19
6452 Delinquent Act 511 Occupation Taxes	186,894.59	(54,500.00)		241,394.59
6500 Earnings on Investments	51,227.03			
6700 Revenues from LEA Activities	66,258.50			
6832 Federal IDEA Revenue Received as Pass Through	192,741.00			
6833 Federal ARRA IDEA Revenue Received as Pass Through	3,574.00			
6910 Rentals	4,244.70			
6941 Regular Day School Tuition	7,777.62			
6942 Summer School Tuition	2,030.00			
6944 Receipts from Other LEAs in Pennsylvania - Education	51,897.28			
6999 Other Revenues Not Specified Above	6,316.24			
TOTAL Revenue from Local Sources	\$18,353,363.14	(\$44,000.00)		\$18,011,296.77

**Revenue Reported
In Current Year**

Revenue from State Sources

7110 Basic Education Funding	6,310,824.36			
7160 Tuition for Orphans Subsidy	21,626.33			
7220 Vocational Education	71,426.82			
7240 Driver Education - Student	3,950.00			
7271 Special Education funds for School-Aged Pupils	1,309,600.30			
7311 Pupil Transportation Subsidy	489,155.89			
7312 Nonpublic and Charter School Pupil Transportation Subsidy	66,605.00			
7320 Rental and Sinking Fund Payments / Building Reimbursement Subsidy	277,343.85			
7330 Health Services (Medical, Dental, Nurse, Act 25)	34,591.62			
7340 State Property Tax Reduction Allocation	902,818.55			
7505 Ready to Learn Block Grant	338,177.00			
7810 State Share of Social Security and Medicare Taxes	499,403.22			
7820 State Share of Retirement Contributions	2,041,853.46			
TOTAL Revenue from State Sources	\$12,367,376.40			

**Revenue Reported
In Current Year**

Revenue from Federal Sources

8514 NCLB, Title I - Improving the Academic Achievement of the Disadvantaged	306,458.00			
8515 NCLB, Title II - Preparing, Training and Recruiting High Quality Teachers and Principals	71,235.00			
8521 Vocational Education - Operating Expenditures	23,344.00			
8690 Other Restricted Federal Grants-in-Aid Through the Commonwealth of PA	10,246.96			
8820 Medical Assistance Reimbursement for Administrative Claiming (Quarterly) Program	4,865.96			
TOTAL Revenue from Federal Sources	\$416,149.92			

Revenue Reported
In Current Year

Other Financing Sources

9210 Proceeds from Commonwealth of PA Loans	196,819.00		
TOTAL Other Financing Sources	\$196,819.00		
TOTAL FROM ALL SOURCES	\$31,333,708.46	(\$44,000.00)	\$18,011,296.77

Revenue from Local Sources	18,353,363.14
Revenue from State Sources	12,367,376.40
Revenue from Federal Sources	416,149.92
Other Financing Sources	196,819.00
TOTAL FROM ALL SOURCES	\$31,333,708.46

General Fund (10)

	<u>Total</u>
1000 Instruction	
100 Personnel Services – Salaries	
100 Personnel Services – Salaries	9,307,722.40
Total Personnel Services – Salaries	\$9,307,722.40
200 Personnel Services – Employee Benefits	
210 Group Insurance – Contracted Provider	4,107.91
220 Social Security Contributions	684,118.18
230 PSERS Retirement Contributions	2,808,953.94
260 Workers’ Compensation	39,555.09
270 Group Insurance – Self-Insurance	1,443,296.66
280 Other Post-Employment Benefits (OPEB)	69,229.20
291 Other Retirement Plans	50,904.19
292 Health Savings Accounts	294,530.03
Total Personnel Services – Employee Benefits	\$5,394,695.20
300 Purchased Professional and Technical Services	
322 Professional Educational Services – Ius	2,157,259.16
324 Professional Educational Services – Employee Training and Development Services	160.00
329 Professional Educational Services – Other	20,795.00
330 Other Professional Services	26,731.94
Total Purchased Professional and Technical Services	\$2,204,946.10
400 Purchased Property Services	
430 Repairs and Maintenance Services	3,200.95
440 Rentals	3,300.00
Total Purchased Property Services	\$6,500.95
500 Other Purchased Services	
530 Communications	22.95
549 Other Advertising/Public Relations	221.22
561 Tuition To Other School Districts Within the State	115,081.36
562 Tuition To Pennsylvania Charter Schools	1,086,474.73
564 Tuition To Career and Technology Centers	112,424.38
568 Tuition To Private Residential Rehabilitative Institutions (PRRI) [In-State] and Detention Centers	561,269.83
569 Tuition – Other	10,072.50
580 Travel	16,841.67
594 IU Payment By Withholding for Institutionalized Children’s Programs – Special Classes	472.12
Total Other Purchased Services	\$1,902,880.76
600 Supplies	
610 General Supplies	189,107.53
620 Energy	971.58
630 Food	1,236.24
640 Books and Periodicals	78,090.73
650 Supplies & Fees – Technology Related	7,648.45
Total Supplies	\$277,054.53
700 Property	
752 Capital Equipment – Original and Additional	112,961.71

LEA : 112015203 Littlestown Area SD

Printed 10/31/2017 3:17:01 PM

General Fund (10)

1000 Instruction	<u>Total</u>
700 <u>Property</u>	
758 Capitalized Technology Software - Original	32,798.91
762 Capitalized Equipment - Replacement	2,449.96
Total Property	\$148,210.58
800 <u>Other Objects</u>	
810 Dues and Fees	3,985.00
Total Other Objects	\$3,985.00
Total 1000 Instruction	\$19,245,995.52

General Fund (10)

1100 Regular Programs – Elementary / Secondary

	<u>Elementary</u>	<u>Secondary</u>	<u>Federal</u>	<u>Total</u>
100 Personnel Services – Salaries				
100 Personnel Services – Salaries	3,679,502.46	3,231,858.82	301,285.31	7,212,646.59
Total Personnel Services – Salaries	\$3,679,502.46	\$3,231,858.82	\$301,285.31	\$7,212,646.59
200 Personnel Services – Employee Benefits				
210 Group Insurance – Contracted Provider	1,539.87	1,371.62	148.18	3,059.67
220 Social Security Contributions	269,770.53	237,667.10	22,148.03	529,585.66
230 PSERS Retirement Contributions	1,111,697.76	971,172.94	90,440.77	2,173,311.47
260 Workers' Compensation	15,644.72	13,720.70	1,281.06	30,646.48
270 Group Insurance – Self-Insurance	625,224.86	426,880.16	60,862.57	1,112,967.59
280 Other Post-Employment Benefits (OPEB)	40,381.39	28,847.81		69,229.20
291 Other Retirement Plans	27,527.18	23,377.01		50,904.19
292 Health Savings Accounts	137,758.90	93,071.13	5,200.00	236,030.03
Total Personnel Services – Employee Benefits	\$2,229,545.21	\$1,796,108.47	\$180,080.61	\$4,205,734.29
300 Purchased Professional and Technical Services				
322 Professional Educational Services – Ius	96,474.79	91,319.82	0.08	187,794.69
329 Professional Educational Services – Other		20,795.00		20,795.00
330 Other Professional Services	(2,104.87)	(1,550.13)		(3,655.00)
Total Purchased Professional and Technical Services	\$94,369.92	\$110,564.69	\$0.08	\$204,934.69
400 Purchased Property Services				
430 Repairs and Maintenance Services	232.25	1,106.36		1,338.61
Total Purchased Property Services	\$232.25	\$1,106.36		\$1,338.61
500 Other Purchased Services				
561 Tuition To Other School Districts Within the State	30,984.09	57,275.11		88,259.20
562 Tuition To Pennsylvania Charter Schools	328,412.02	173,161.78		501,573.80
568 Tuition To Private Residential Rehabilitative Institutions (PRRI) [In-State] and Detention Centers	306.66	973.34		1,280.00
580 Travel	212.19	4,257.61	226.64	4,696.44
Total Other Purchased Services	\$359,914.96	\$235,667.84	\$226.64	\$595,809.44
600 Supplies				
610 General Supplies	58,940.01	50,952.18		109,892.19
630 Food	710.12	383.88		1,094.00
640 Books and Periodicals	46,150.90	29,519.22		75,670.12
650 Supplies & Fees – Technology Related	5,074.15	2,552.13		7,626.28
Total Supplies	\$110,875.18	\$83,407.41		\$194,282.59
700 Property				
752 Capital Equipment – Original and Additional	61,261.67	47,413.09		108,674.76
758 Capitalized Technology Software - Original	19,131.60	13,667.31		32,798.91
762 Capitalized Equipment - Replacement	1,359.98	1,089.98		2,449.96
Total Property	\$81,753.25	\$62,170.38		\$143,923.63
800 Other Objects				
810 Dues and Fees	197.48	1,172.52		1,370.00
Total Other Objects	\$197.48	\$1,172.52		\$1,370.00
Total 1100 Regular Programs – Elementary / Secondary	\$6,556,390.71	\$5,522,056.49	\$481,592.64	\$12,560,039.84

General Fund (10)

1110 Regular Programs

100 Personnel Services – Salaries

	<u>Elementary</u>	<u>Secondary</u>	<u>Federal</u>	<u>Total</u>
100 Personnel Services – Salaries	3,679,502.46	3,231,858.82		6,911,361.28
Total Personnel Services – Salaries	\$3,679,502.46	\$3,231,858.82		\$6,911,361.28

200 Personnel Services – Employee Benefits

210 Group Insurance – Contracted Provider	1,539.87	1,371.62		2,911.49
220 Social Security Contributions	269,770.53	237,667.10		507,437.63
230 PSERS Retirement Contributions	1,111,697.76	971,172.94		2,082,870.70
260 Workers' Compensation	15,644.72	13,720.70		29,365.42
270 Group Insurance – Self-Insurance	625,224.86	426,880.16		1,052,105.02
280 Other Post-Employment Benefits (OPEB)	40,381.39	28,847.81		69,229.20
291 Other Retirement Plans	27,527.18	23,377.01		50,904.19
292 Health Savings Accounts	137,758.90	93,071.13		230,830.03
Total Personnel Services – Employee Benefits	\$2,229,545.21	\$1,796,108.47		\$4,025,653.68

300 Purchased Professional and Technical Services

322 Professional Educational Services – Ius	96,474.79	91,319.82		187,794.61
329 Professional Educational Services – Other		20,795.00		20,795.00
330 Other Professional Services	(2,104.87)	(1,550.13)		(3,655.00)
Total Purchased Professional and Technical Services	\$94,369.92	\$110,564.69		\$204,934.61

400 Purchased Property Services

430 Repairs and Maintenance Services	232.25	1,106.36		1,338.61
Total Purchased Property Services	\$232.25	\$1,106.36		\$1,338.61

500 Other Purchased Services

561 Tuition To Other School Districts Within the State	30,984.09	57,275.11		88,259.20
562 Tuition To Pennsylvania Charter Schools	328,412.02	173,161.78		501,573.80
568 Tuition To Private Residential Rehabilitative Institutions (PRRI) [In-State] and Detention Centers	306.66	973.34		1,280.00
580 Travel	212.19	4,257.61	226.64	4,696.44
Total Other Purchased Services	\$359,914.96	\$235,667.84	\$226.64	\$595,809.44

600 Supplies

610 General Supplies	58,940.01	50,952.18		109,892.19
630 Food	710.12	383.88		1,094.00
640 Books and Periodicals	46,150.90	29,519.22		75,670.12
650 Supplies & Fees – Technology Related	5,074.15	2,552.13		7,626.28
Total Supplies	\$110,875.18	\$83,407.41		\$194,282.59

700 Property

752 Capital Equipment – Original and Additional	61,261.67	47,413.09		108,674.76
758 Capitalized Technology Software - Original	19,131.60	13,667.31		32,798.91
762 Capitalized Equipment - Replacement	1,359.98	1,089.98		2,449.96
Total Property	\$81,753.25	\$62,170.38		\$143,923.63

800 Other Objects

810 Dues and Fees	197.48	1,172.52		1,370.00
Total Other Objects	\$197.48	\$1,172.52		\$1,370.00

Total 1110 Regular Programs

	\$6,556,390.71	\$5,522,056.49	\$226.64	\$12,078,673.84
--	-----------------------	-----------------------	-----------------	------------------------

General Fund (10)

	<u>Elementary</u>	<u>Secondary</u>	<u>Federal</u>	<u>Total</u>
1190 Federally-Funded Regular Programs				
100 Personnel Services – Salaries				
100 Personnel Services – Salaries			301,285.31	301,285.31
Total Personnel Services – Salaries			\$301,285.31	\$301,285.31
200 Personnel Services – Employee Benefits				
210 Group Insurance – Contracted Provider			148.18	148.18
220 Social Security Contributions			22,148.03	22,148.03
230 PSERS Retirement Contributions			90,440.77	90,440.77
260 Workers' Compensation			1,281.06	1,281.06
270 Group Insurance – Self-Insurance			60,862.57	60,862.57
292 Health Savings Accounts			5,200.00	5,200.00
Total Personnel Services – Employee Benefits			\$180,080.61	\$180,080.61
300 Purchased Professional and Technical Services				
322 Professional Educational Services – Ius			0.08	0.08
Total Purchased Professional and Technical Services			\$0.08	\$0.08
Total 1190 Federally-Funded Regular Programs			\$481,366.00	\$481,366.00

General Fund (10)

1200 Special Programs – Elementary / Secondary

	<u>Elementary</u>	<u>Secondary</u>	<u>Federal</u>	<u>Total</u>
100 Personnel Services – Salaries				
100 Personnel Services – Salaries	530,673.65	800,766.55	7,148.00	1,338,588.20
Total Personnel Services – Salaries	\$530,673.65	\$800,766.55	\$7,148.00	\$1,338,588.20
200 Personnel Services – Employee Benefits				
210 Group Insurance – Contracted Provider	332.03	384.18		716.21
220 Social Security Contributions	39,701.41	59,296.89		98,998.30
230 PSERS Retirement Contributions	163,022.79	241,321.44		404,344.23
260 Workers' Compensation	2,286.93	3,404.88		5,691.81
270 Group Insurance – Self-Insurance	78,233.42	97,108.71		175,342.13
292 Health Savings Accounts	14,516.19	19,933.81		34,450.00
Total Personnel Services – Employee Benefits	\$298,092.77	\$421,449.91		\$719,542.68
300 Purchased Professional and Technical Services				
322 Professional Educational Services – Ius	682,994.75	1,076,618.72	192,741.00	1,952,354.47
324 Professional Educational Services – Employee Training and Development Services	93.33	66.67		160.00
330 Other Professional Services	12,705.85	17,681.09		30,386.94
Total Purchased Professional and Technical Services	\$695,793.93	\$1,094,366.48	\$192,741.00	\$1,982,901.41
500 Other Purchased Services				
530 Communications	13.39	9.56		22.95
549 Other Advertising/Public Relations	129.04	92.18		221.22
561 Tuition To Other School Districts Within the State	3,476.69	19,479.67		22,956.36
562 Tuition To Pennsylvania Charter Schools	274,064.73	310,836.20		584,900.93
568 Tuition To Private Residential Rehabilitative Institutions (PRRI) [In-State] and Detention Centers	101,723.35	292,634.38		394,357.73
569 Tuition – Other		10,072.50		10,072.50
580 Travel		629.37		629.37
594 IU Payment By Withholding for Institutionalized Children's Programs – Special Classes	275.39	196.73		472.12
Total Other Purchased Services	\$379,682.59	\$633,950.59		\$1,013,633.18
600 Supplies				
610 General Supplies	6,024.47	2,975.28	245.09	9,244.84
630 Food		142.24		142.24
640 Books and Periodicals	705.23	1,715.38		2,420.61
650 Supplies & Fees – Technology Related	219.32	156.68		376.00
Total Supplies	\$6,949.02	\$4,989.58	\$245.09	\$12,183.69
800 Other Objects				
810 Dues and Fees	475.39	339.61		815.00
Total Other Objects	\$475.39	\$339.61		\$815.00
Total 1200 Special Programs – Elementary / Secondary	\$1,911,667.35	\$2,955,862.72	\$200,134.09	\$5,067,664.16

General Fund (10)

1240 Academic Support

	<u>Elementary</u>	<u>Secondary</u>	<u>Federal</u>	<u>Total</u>
100 Personnel Services – Salaries				
100 Personnel Services – Salaries	530,673.65	800,766.55	7,148.00	1,338,588.20
Total Personnel Services – Salaries	\$530,673.65	\$800,766.55	\$7,148.00	\$1,338,588.20
200 Personnel Services – Employee Benefits				
210 Group Insurance – Contracted Provider	332.03	384.18		716.21
220 Social Security Contributions	39,701.41	59,296.89		98,998.30
230 PSERS Retirement Contributions	163,022.79	241,321.44		404,344.23
260 Workers' Compensation	2,286.93	3,404.88		5,691.81
270 Group Insurance – Self-Insurance	78,233.42	97,108.71		175,342.13
292 Health Savings Accounts	14,516.19	19,933.81		34,450.00
Total Personnel Services – Employee Benefits	\$298,092.77	\$421,449.91		\$719,542.68
300 Purchased Professional and Technical Services				
322 Professional Educational Services – Ius	682,994.75	1,076,618.72	192,741.00	1,952,354.47
324 Professional Educational Services – Employee Training and Development Services	93.33	66.67		160.00
330 Other Professional Services	12,705.85	17,681.09		30,386.94
Total Purchased Professional and Technical Services	\$695,793.93	\$1,094,366.48	\$192,741.00	\$1,982,901.41
500 Other Purchased Services				
530 Communications	13.39	9.56		22.95
549 Other Advertising/Public Relations	129.04	92.18		221.22
561 Tuition To Other School Districts Within the State	3,476.69	19,479.67		22,956.36
562 Tuition To Pennsylvania Charter Schools	274,064.73	310,836.20		584,900.93
568 Tuition To Private Residential Rehabilitative Institutions (PRRI) [In-State] and Detention Centers	101,723.35	292,634.38		394,357.73
569 Tuition – Other		10,072.50		10,072.50
580 Travel		629.37		629.37
Total Other Purchased Services	\$379,407.20	\$633,753.86		\$1,013,161.06
600 Supplies				
610 General Supplies	6,024.47	2,975.28	245.09	9,244.84
630 Food		142.24		142.24
640 Books and Periodicals	705.23	1,715.38		2,420.61
650 Supplies & Fees – Technology Related	219.32	156.68		376.00
Total Supplies	\$6,949.02	\$4,989.58	\$245.09	\$12,183.69
800 Other Objects				
810 Dues and Fees	475.39	339.61		815.00
Total Other Objects	\$475.39	\$339.61		\$815.00
Total 1240 Academic Support	\$1,911,391.96	\$2,955,665.99	\$200,134.09	\$5,067,192.04

General Fund (10)

	<u>Elementary</u>	<u>Secondary</u>	<u>Federal</u>	<u>Total</u>
1241 Learning Support – Public				
100 Personnel Services – Salaries				
100 Personnel Services – Salaries	449,490.19	748,296.01	7,148.00	1,204,934.20
Total Personnel Services – Salaries	\$449,490.19	\$748,296.01	\$7,148.00	\$1,204,934.20
200 Personnel Services – Employee Benefits				
210 Group Insurance – Contracted Provider	295.44	365.89		661.33
220 Social Security Contributions	33,882.76	55,464.92		89,347.68
230 PSERS Retirement Contributions	138,358.20	225,417.11		363,775.31
260 Workers' Compensation	1,941.75	3,181.78		5,123.53
270 Group Insurance – Self-Insurance	58,566.14	92,463.27		151,029.41
292 Health Savings Accounts	11,482.90	19,067.10		30,550.00
Total Personnel Services – Employee Benefits	\$244,527.19	\$395,960.07		\$640,487.26
300 Purchased Professional and Technical Services				
322 Professional Educational Services – Ius	682,994.75	1,076,618.72	192,741.00	1,952,354.47
324 Professional Educational Services – Employee Training and Development Services	93.33	66.67		160.00
330 Other Professional Services	12,705.85	17,681.09		30,386.94
Total Purchased Professional and Technical Services	\$695,793.93	\$1,094,366.48	\$192,741.00	\$1,982,901.41
500 Other Purchased Services				
530 Communications	13.39	9.56		22.95
549 Other Advertising/Public Relations	129.04	92.18		221.22
561 Tuition To Other School Districts Within the State	3,476.69	19,479.67		22,956.36
562 Tuition To Pennsylvania Charter Schools	274,064.73	310,836.20		584,900.93
568 Tuition To Private Residential Rehabilitative Institutions (PRRI) [In-State] and Detention Centers	100,042.13	117,703.16		217,745.29
569 Tuition – Other		10,072.50		10,072.50
580 Travel		629.37		629.37
Total Other Purchased Services	\$377,725.98	\$458,822.64		\$836,548.62
600 Supplies				
610 General Supplies	5,874.44	2,736.29		8,610.73
630 Food		142.24		142.24
640 Books and Periodicals	8.13	5.81		13.94
650 Supplies & Fees – Technology Related	219.32	156.68		376.00
Total Supplies	\$6,101.89	\$3,041.02		\$9,142.91
800 Other Objects				
810 Dues and Fees	475.39	339.61		815.00
Total Other Objects	\$475.39	\$339.61		\$815.00
Total 1241 Learning Support – Public	\$1,774,114.57	\$2,700,825.83	\$199,889.00	\$4,674,829.40

General Fund (10)

1242 Learning Support – PRRI

500 Other Purchased Services

568 Tuition To Private Residential Rehabilitative Institutions (PRRI) [In-State] and Detention Centers

Total Other Purchased Services

Total 1242 Learning Support – PRRI

	<u>Elementary</u>	<u>Secondary</u>	<u>Federal</u>	<u>Total</u>
	1,681.22	174,931.22		176,612.44
	\$1,681.22	\$174,931.22		\$176,612.44
	\$1,681.22	\$174,931.22		\$176,612.44

General Fund (10)

1243 Gifted Support

	<u>Elementary</u>	<u>Secondary</u>	<u>Federal</u>	<u>Total</u>
100 Personnel Services – Salaries				
100 Personnel Services – Salaries	81,183.46	52,470.54		133,654.00
Total Personnel Services – Salaries	\$81,183.46	\$52,470.54		\$133,654.00
200 Personnel Services – Employee Benefits				
210 Group Insurance – Contracted Provider	36.59	18.29		54.88
220 Social Security Contributions	5,818.65	3,831.97		9,650.62
230 PSERS Retirement Contributions	24,664.59	15,904.33		40,568.92
260 Workers' Compensation	345.18	223.10		568.28
270 Group Insurance – Self-Insurance	19,667.28	4,645.44		24,312.72
292 Health Savings Accounts	3,033.29	866.71		3,900.00
Total Personnel Services – Employee Benefits	\$53,565.58	\$25,489.84		\$79,055.42
600 Supplies				
610 General Supplies	150.03	238.99	245.09	634.11
640 Books and Periodicals	697.10	1,709.57		2,406.67
Total Supplies	\$847.13	\$1,948.56	\$245.09	\$3,040.78
Total 1243 Gifted Support	\$135,596.17	\$79,908.94	\$245.09	\$215,750.20

LEA : 112015203 Littlestown Area SD

Printed 10/31/2017 3:17:01 PM

General Fund (10)

1290 Special Programs - Other Support

500 Other Purchased Services

594 IU Payment By Withholding for Institutionalized Children's Programs – Special Classes

Total Other Purchased Services

Total 1290 Special Programs - Other Support

	<u>Elementary</u>	<u>Secondary</u>	<u>Federal</u>	<u>Total</u>
594 IU Payment By Withholding for Institutionalized Children's Programs – Special Classes	275.39	196.73		472.12
Total Other Purchased Services	\$275.39	\$196.73		\$472.12
Total 1290 Special Programs - Other Support	\$275.39	\$196.73		\$472.12

General Fund (10)

1300 Vocational Education

	<u>Elementary</u>	<u>Secondary</u>	<u>Federal</u>	<u>Total</u>
100 Personnel Services – Salaries				
100 Personnel Services – Salaries		595,222.66	9,173.45	604,396.11
Total Personnel Services – Salaries		\$595,222.66	\$9,173.45	\$604,396.11
200 Personnel Services – Employee Benefits				
210 Group Insurance – Contracted Provider		249.71	27.44	277.15
220 Social Security Contributions		43,640.78	701.81	44,342.59
230 PSERS Retirement Contributions		182,303.72	2,787.02	185,090.74
260 Workers' Compensation		2,531.03	39.01	2,570.04
270 Group Insurance – Self-Insurance		125,392.06		125,392.06
292 Health Savings Accounts		18,850.00		18,850.00
Total Personnel Services – Employee Benefits		\$372,967.30	\$3,555.28	\$376,522.58
400 Purchased Property Services				
430 Repairs and Maintenance Services		1,819.14		1,819.14
Total Purchased Property Services		\$1,819.14		\$1,819.14
500 Other Purchased Services				
564 Tuition To Career and Technology Centers		112,424.38		112,424.38
580 Travel		11,182.35	322.26	11,504.61
Total Other Purchased Services		\$123,606.73	\$322.26	\$123,928.99
600 Supplies				
610 General Supplies		62,674.75	6,773.35	69,448.10
650 Supplies & Fees – Technology Related		(353.83)		(353.83)
Total Supplies		\$62,320.92	\$6,773.35	\$69,094.27
700 Property				
752 Capital Equipment – Original and Additional			4,286.95	4,286.95
Total Property			\$4,286.95	\$4,286.95
800 Other Objects				
810 Dues and Fees		1,800.00		1,800.00
Total Other Objects		\$1,800.00		\$1,800.00
Total 1300 Vocational Education		\$1,157,736.75	\$24,111.29	\$1,181,848.04

General Fund (10)

	<u>Elementary</u>	<u>Secondary</u>	<u>Federal</u>	<u>Total</u>
1400 Other Instructional Programs – Elementary / Secondary				
100 Personnel Services – Salaries				
100 Personnel Services – Salaries	1,350.00	150,741.50		152,091.50
Total Personnel Services – Salaries	\$1,350.00	\$150,741.50		\$152,091.50
200 Personnel Services – Employee Benefits				
210 Group Insurance – Contracted Provider		54.88		54.88
220 Social Security Contributions	100.18	11,091.45		11,191.63
230 PSERS Retirement Contributions	410.16	45,797.34		46,207.50
260 Workers' Compensation	5.75	641.01		646.76
270 Group Insurance – Self-Insurance		29,594.88		29,594.88
292 Health Savings Accounts		5,200.00		5,200.00
Total Personnel Services – Employee Benefits	\$516.09	\$92,379.56		\$92,895.65
400 Purchased Property Services				
430 Repairs and Maintenance Services		43.20		43.20
440 Rentals		3,300.00		3,300.00
Total Purchased Property Services		\$3,343.20		\$3,343.20
500 Other Purchased Services				
561 Tuition To Other School Districts Within the State	2,254.92	1,610.88		3,865.80
568 Tuition To Private Residential Rehabilitative Institutions (PRRI) [In-State] and Detention Centers	59,169.75	106,462.35		165,632.10
580 Travel		11.25		11.25
Total Other Purchased Services	\$61,424.67	\$108,084.48		\$169,509.15
600 Supplies				
610 General Supplies		522.40		522.40
620 Energy		971.58		971.58
Total Supplies		\$1,493.98		\$1,493.98
Total 1400 Other Instructional Programs – Elementary / Secondary	\$63,290.76	\$356,042.72		\$419,333.48

General Fund (10)

1410 Drivers' Education

100 Personnel Services – Salaries

	<u>Elementary</u>	<u>Secondary</u>	<u>Federal</u>	<u>Total</u>
100 Personnel Services – Salaries		71,827.00		71,827.00
Total Personnel Services – Salaries		\$71,827.00		\$71,827.00

200 Personnel Services – Employee Benefits

210 Group Insurance – Contracted Provider		27.44		27.44
220 Social Security Contributions		5,262.53		5,262.53
230 PSERS Retirement Contributions		21,822.01		21,822.01
260 Workers' Compensation		305.39		305.39
270 Group Insurance – Self-Insurance		12,249.97		12,249.97
292 Health Savings Accounts		2,600.00		2,600.00
Total Personnel Services – Employee Benefits		\$42,267.34		\$42,267.34

400 Purchased Property Services

430 Repairs and Maintenance Services		43.20		43.20
440 Rentals		3,300.00		3,300.00
Total Purchased Property Services		\$3,343.20		\$3,343.20

500 Other Purchased Services

580 Travel		11.25		11.25
Total Other Purchased Services		\$11.25		\$11.25

600 Supplies

610 General Supplies		522.40		522.40
620 Energy		971.58		971.58
Total Supplies		\$1,493.98		\$1,493.98

Total 1410 Drivers' Education

		\$118,942.77		\$118,942.77
--	--	---------------------	--	---------------------

General Fund (10)

1430 Homebound Instruction

100 Personnel Services – Salaries

	<u>Elementary</u>	<u>Secondary</u>	<u>Federal</u>	<u>Total</u>
100 Personnel Services – Salaries	1,350.00	2,587.50		3,937.50
Total Personnel Services – Salaries	\$1,350.00	\$2,587.50		\$3,937.50

200 Personnel Services – Employee Benefits

220 Social Security Contributions	100.18	189.76		289.94
230 PSERS Retirement Contributions	410.16	786.11		1,196.27
260 Workers’ Compensation	5.75	11.03		16.78
Total Personnel Services – Employee Benefits	\$516.09	\$986.90		\$1,502.99
Total 1430 Homebound Instruction	\$1,866.09	\$3,574.40		\$5,440.49

General Fund (10)

	<u>Elementary</u>	<u>Secondary</u>	<u>Federal</u>	<u>Total</u>
1440 Alternative Regular Education Programs				
100 Personnel Services – Salaries				
100 Personnel Services – Salaries		76,327.00		76,327.00
Total Personnel Services – Salaries		\$76,327.00		\$76,327.00
200 Personnel Services – Employee Benefits				
210 Group Insurance – Contracted Provider		27.44		27.44
220 Social Security Contributions		5,639.16		5,639.16
230 PSERS Retirement Contributions		23,189.22		23,189.22
260 Workers' Compensation		324.59		324.59
270 Group Insurance – Self-Insurance		17,344.91		17,344.91
292 Health Savings Accounts		2,600.00		2,600.00
Total Personnel Services – Employee Benefits		\$49,125.32		\$49,125.32
500 Other Purchased Services				
561 Tuition To Other School Districts Within the State	2,254.92	1,610.88		3,865.80
568 Tuition To Private Residential Rehabilitative Institutions (PRRI) [In-State] and Detention Centers	59,169.75	106,462.35		165,632.10
Total Other Purchased Services	\$61,424.67	\$108,073.23		\$169,497.90
Total 1440 Alternative Regular Education Programs	\$61,424.67	\$233,525.55		\$294,950.22

LEA : 112015203 Littlestown Area SD

Printed 10/31/2017 3:17:01 PM

General Fund (10)

1441 Adjudicated / Court-Placed Programs

500 Other Purchased Services

561 Tuition To Other School Districts Within the State

Total Other Purchased Services

Total 1441 Adjudicated / Court-Placed Programs

	<u>Elementary</u>	<u>Secondary</u>	<u>Federal</u>	<u>Total</u>
561 Tuition To Other School Districts Within the State	2,254.92	1,610.88		3,865.80
Total Other Purchased Services	\$2,254.92	\$1,610.88		\$3,865.80
Total 1441 Adjudicated / Court-Placed Programs	\$2,254.92	\$1,610.88		\$3,865.80

General Fund (10)

1442 Alternative Education Programs

100 Personnel Services – Salaries

	<u>Elementary</u>	<u>Secondary</u>	<u>Federal</u>	<u>Total</u>
100 Personnel Services – Salaries		76,327.00		76,327.00
Total Personnel Services – Salaries		\$76,327.00		\$76,327.00
200 Personnel Services – Employee Benefits				
210 Group Insurance – Contracted Provider		27.44		27.44
220 Social Security Contributions		5,639.16		5,639.16
230 PSERS Retirement Contributions		23,189.22		23,189.22
260 Workers' Compensation		324.59		324.59
270 Group Insurance – Self-Insurance		17,344.91		17,344.91
292 Health Savings Accounts		2,600.00		2,600.00
Total Personnel Services – Employee Benefits		\$49,125.32		\$49,125.32
500 Other Purchased Services				
568 Tuition To Private Residential Rehabilitative Institutions (PRRI) [In-State] and Detention Centers	59,169.75	106,462.35		165,632.10
Total Other Purchased Services	\$59,169.75	\$106,462.35		\$165,632.10
Total 1442 Alternative Education Programs	\$59,169.75	\$231,914.67		\$291,084.42

LEA : 112015203 Littlestown Area SD

Printed 10/31/2017 3:17:01 PM

General Fund (10)

1500 Nonpublic School Programs

300 Purchased Professional and Technical Services

322 Professional Educational Services – lus

Total Purchased Professional and Technical Services

Total 1500 Nonpublic School Programs

Elementary

Secondary

Federal

Total

17,110.00

17,110.00

\$17,110.00

\$17,110.00

\$17,110.00

\$17,110.00

General Fund (10)

2000 Support Services

Total

100 Personnel Services – Salaries

100 Personnel Services – Salaries 3,206,066.35

Total Personnel Services – Salaries \$3,206,066.35

200 Personnel Services – Employee Benefits

210 Group Insurance – Contracted Provider 4,139.23

220 Social Security Contributions 237,291.12

230 PSERS Retirement Contributions 944,040.15

240 Tuition Reimbursement 230,306.96

250 Unemployment Compensation 3,529.54

260 Workers' Compensation 13,549.41

270 Group Insurance – Self-Insurance 407,130.31

280 Other Post-Employment Benefits (OPEB) 4,238.40

292 Health Savings Accounts 73,666.67

Total Personnel Services – Employee Benefits \$1,917,891.79

300 Purchased Professional and Technical Services

310 Official / Administrative Services 70,104.03

322 Professional Educational Services – Ius 1,712.00

324 Professional Educational Services – Employee Training and Development Services 30,781.97

330 Other Professional Services 242,251.01

390 Other Purchased Professional and Technical Services 236.50

Total Purchased Professional and Technical Services \$345,085.51

400 Purchased Property Services

410 Cleaning Services 69,855.69

420 Utility Services 63,701.89

430 Repairs and Maintenance Services 183,102.55

440 Rentals 39,000.26

Total Purchased Property Services \$355,660.39

500 Other Purchased Services

513 Contracted Carriers 582,714.31

516 Student Transportation Services From the IU 6,024.98

519 Student Transportation Services From Other Sources 885.96

520 Insurance – General 30,615.00

521 Fire Insurance 47,040.00

522 Automotive Liability Insurance 23,203.00

523 General Property and Liability Insurance 12,977.00

530 Communications 50,724.23

549 Other Advertising/Public Relations 31,157.27

580 Travel 18,296.48

595 IU Payments By Withholding 18,019.48

Total Other Purchased Services \$821,657.71

600 Supplies

610 General Supplies 390,318.60

620 Energy 325,565.96

630 Food 2,389.59

LEA : 112015203 Littlestown Area SD

Printed 10/31/2017 3:17:07 PM

General Fund (10)

2000 Support Services

Total

600 Supplies

640 Books and Periodicals	11,942.38
650 Supplies & Fees – Technology Related	27,712.64

Total Supplies	\$757,929.17
-----------------------	---------------------

700 Property

752 Capital Equipment – Original and Additional	146,276.49
758 Capitalized Technology Software - Original	22,766.22
762 Capitalized Equipment - Replacement	16,323.77
768 Capitalized Technology Software - Replacement	10,935.90

Total Property	\$196,302.38
-----------------------	---------------------

800 Other Objects

810 Dues and Fees	33,617.95
890 Miscellaneous Expenditures	95.00

Total Other Objects	\$33,712.95
----------------------------	--------------------

Total 2000 Support Services	\$7,634,306.25
------------------------------------	-----------------------

General Fund (10)

	<u>Elementary</u>	<u>Secondary</u>	<u>Federal</u>	<u>Total</u>
2100 Support Services – Students				
100 Personnel Services – Salaries				
100 Personnel Services – Salaries	170,294.65	270,932.36		441,227.01
Total Personnel Services – Salaries	\$170,294.65	\$270,932.36		\$441,227.01
200 Personnel Services – Employee Benefits				
210 Group Insurance – Contracted Provider	59.68	113.19		172.87
220 Social Security Contributions	12,579.65	20,025.07		32,604.72
230 PSERS Retirement Contributions	49,235.59	80,042.55		129,278.14
260 Workers' Compensation	724.15	1,151.95		1,876.10
270 Group Insurance – Self-Insurance	25,425.50	26,423.32		51,848.82
292 Health Savings Accounts	3,466.58	5,633.42		9,100.00
Total Personnel Services – Employee Benefits	\$91,491.15	\$133,389.50		\$224,880.65
300 Purchased Professional and Technical Services				
324 Professional Educational Services – Employee Training and Development Services		150.00		150.00
330 Other Professional Services	50,518.45	36,089.55		86,608.00
Total Purchased Professional and Technical Services	\$50,518.45	\$36,239.55		\$86,758.00
500 Other Purchased Services				
580 Travel	49.41	1,180.70	217.54	2,101.69
Total Other Purchased Services	\$49.41	\$1,180.70	\$217.54	\$2,101.69
600 Supplies				
610 General Supplies	206.03	746.29		952.32
Total Supplies	\$206.03	\$746.29		\$952.32
800 Other Objects				
810 Dues and Fees	475.98	172.01		767.99
Total Other Objects	\$475.98	\$172.01		\$767.99
Total 2100 Support Services – Students	\$313,035.67	\$442,660.41	\$217.54	\$756,687.66

General Fund (10)

	<u>Elementary</u>	<u>Secondary</u>	<u>Federal</u>	<u>Total</u>
2120 Guidance Services				
100 Personnel Services – Salaries				
100 Personnel Services – Salaries	154,348.21	259,540.48		413,888.69
Total Personnel Services – Salaries	\$154,348.21	\$259,540.48		\$413,888.69
200 Personnel Services – Employee Benefits				
210 Group Insurance – Contracted Provider	54.88	109.76		164.64
220 Social Security Contributions	11,372.28	19,162.54		30,534.82
230 PSERS Retirement Contributions	46,517.41	78,100.73		124,618.14
260 Workers' Compensation	656.34	1,103.50		1,759.84
270 Group Insurance – Self-Insurance	23,125.97	24,780.57		47,906.54
292 Health Savings Accounts	3,466.58	5,633.42		9,100.00
Total Personnel Services – Employee Benefits	\$85,193.46	\$128,890.52		\$214,083.98
300 Purchased Professional and Technical Services				
324 Professional Educational Services – Employee Training and Development Services		150.00		150.00
Total Purchased Professional and Technical Services		\$150.00		\$150.00
500 Other Purchased Services				
580 Travel	49.41	1,180.70	217.54	1,447.65
Total Other Purchased Services	\$49.41	\$1,180.70	\$217.54	\$1,447.65
600 Supplies				
610 General Supplies	30.51	620.90		651.41
Total Supplies	\$30.51	\$620.90		\$651.41
800 Other Objects				
810 Dues and Fees	475.98	172.01		647.99
Total Other Objects	\$475.98	\$172.01		\$647.99
Total 2120 Guidance Services	\$240,097.57	\$390,554.61	\$217.54	\$630,869.72

General Fund (10)

	<u>Elementary</u>	<u>Secondary</u>	<u>Federal</u>	<u>Total</u>
2140 Psychological Services				
100 Personnel Services – Salaries				
100 Personnel Services – Salaries	15,946.44	11,391.88		27,338.32
Total Personnel Services – Salaries	\$15,946.44	\$11,391.88		\$27,338.32
200 Personnel Services – Employee Benefits				
210 Group Insurance – Contracted Provider	4.80	3.43		8.23
220 Social Security Contributions	1,207.37	862.53		2,069.90
230 PSERS Retirement Contributions	2,718.18	1,941.82		4,660.00
260 Workers' Compensation	67.81	48.45		116.26
270 Group Insurance – Self-Insurance	2,299.53	1,642.75		3,942.28
Total Personnel Services – Employee Benefits	\$6,297.69	\$4,498.98		\$10,796.67
300 Purchased Professional and Technical Services				
330 Other Professional Services	50,518.45	36,089.55		86,608.00
Total Purchased Professional and Technical Services	\$50,518.45	\$36,089.55		\$86,608.00
600 Supplies				
610 General Supplies	175.52	125.39		300.91
Total Supplies	\$175.52	\$125.39		\$300.91
Total 2140 Psychological Services	\$72,938.10	\$52,105.80		\$125,043.90

LEA : 112015203 Littlestown Area SD

Printed 10/31/2017 3:17:07 PM

General Fund (10)

	<u>Elementary</u>	<u>Secondary</u>	<u>Federal</u>	<u>Total</u>
2170 Student Accounting Services				
500 Other Purchased Services				
580 Travel				654.04
Total Other Purchased Services				\$654.04
800 Other Objects				
810 Dues and Fees				120.00
Total Other Objects				\$120.00
Total 2170 Student Accounting Services				\$774.04

General Fund (10)

2200 Support Services – Instructional Staff

	<u>Elementary</u>	<u>Secondary</u>	<u>Federal</u>	<u>Total</u>
100 Personnel Services – Salaries				
100 Personnel Services – Salaries	324,761.37	230,842.26		555,603.63
Total Personnel Services – Salaries	\$324,761.37	\$230,842.26		\$555,603.63
200 Personnel Services – Employee Benefits				
210 Group Insurance – Contracted Provider	440.32	329.05		769.37
220 Social Security Contributions	24,205.49	17,174.81		41,380.30
230 PSERS Retirement Contributions	96,555.32	68,533.33		165,088.65
240 Tuition Reimbursement	86,259.40	103,905.90		190,165.30
260 Workers' Compensation	1,384.93	984.40		2,369.33
270 Group Insurance – Self-Insurance	35,711.81	27,879.06		63,590.87
292 Health Savings Accounts	8,341.32	4,658.68		13,000.00
Total Personnel Services – Employee Benefits	\$252,898.59	\$223,465.23		\$476,363.82
300 Purchased Professional and Technical Services				
322 Professional Educational Services – lus	998.61	713.39		1,712.00
324 Professional Educational Services – Employee Training and Development Services	9,981.67	10,077.33		20,059.00
330 Other Professional Services	13,337.74	9,528.26		22,866.00
Total Purchased Professional and Technical Services	\$24,318.02	\$20,318.98		\$44,637.00
400 Purchased Property Services				
430 Repairs and Maintenance Services	334.42	238.91		573.33
440 Rentals	1,292.56	923.39		2,215.95
Total Purchased Property Services	\$1,626.98	\$1,162.30		\$2,789.28
500 Other Purchased Services				
530 Communications	18,718.73	13,372.36		32,091.09
580 Travel	1,650.32	1,412.09		3,062.41
Total Other Purchased Services	\$20,369.05	\$14,784.45		\$35,153.50
600 Supplies				
610 General Supplies	67,095.54	50,767.26		117,862.80
630 Food	6.35	4.53		10.88
640 Books and Periodicals	5,467.21	6,475.17		11,942.38
650 Supplies & Fees – Technology Related	8,305.39	14,862.75		23,168.14
Total Supplies	\$80,874.49	\$72,109.71		\$152,984.20
700 Property				
752 Capital Equipment – Original and Additional	17,397.27	1,653.80		19,051.07
758 Capitalized Technology Software - Original	13,279.54	9,486.68		22,766.22
768 Capitalized Technology Software - Replacement	6,378.91	4,556.99		10,935.90
Total Property	\$37,055.72	\$15,697.47		\$52,753.19
800 Other Objects				
810 Dues and Fees	420.40	689.60		1,110.00
Total Other Objects	\$420.40	\$689.60		\$1,110.00
Total 2200 Support Services – Instructional Staff	\$742,324.62	\$579,070.00		\$1,321,394.62

LEA : 112015203 Littlestown Area SD

Printed 10/31/2017 3:17:07 PM

General Fund (10)

2220 Technology Support Services

600 Supplies

610 General Supplies

Total Supplies

Total 2220 Technology Support Services

Elementary

Secondary

Federal

Total

459.95

947.05

1,407.00

\$459.95

\$947.05

\$1,407.00

\$459.95

\$947.05

\$1,407.00

General Fund (10)

	<u>Elementary</u>	<u>Secondary</u>	<u>Federal</u>	<u>Total</u>
2240 Computer-Assisted Instruction Support Services				
100 Personnel Services – Salaries				
100 Personnel Services – Salaries	81,149.32	57,971.72		139,121.04
Total Personnel Services – Salaries	\$81,149.32	\$57,971.72		\$139,121.04
200 Personnel Services – Employee Benefits				
210 Group Insurance – Contracted Provider	97.88	69.92		167.80
220 Social Security Contributions	5,963.03	4,259.90		10,222.93
230 PSERS Retirement Contributions	23,229.25	16,594.60		39,823.85
260 Workers' Compensation	348.91	249.26		598.17
270 Group Insurance – Self-Insurance	15,428.97	11,022.21		26,451.18
292 Health Savings Accounts	3,033.16	2,166.84		5,200.00
Total Personnel Services – Employee Benefits	\$48,101.20	\$34,362.73		\$82,463.93
300 Purchased Professional and Technical Services				
324 Professional Educational Services – Employee Training and Development Services	902.95	645.05		1,548.00
330 Other Professional Services	12,901.43	9,216.57		22,118.00
Total Purchased Professional and Technical Services	\$13,804.38	\$9,861.62		\$23,666.00
400 Purchased Property Services				
430 Repairs and Maintenance Services	334.42	238.91		573.33
440 Rentals	1,292.56	923.39		2,215.95
Total Purchased Property Services	\$1,626.98	\$1,162.30		\$2,789.28
500 Other Purchased Services				
530 Communications	18,718.73	13,372.36		32,091.09
580 Travel	17.63	12.60		30.23
Total Other Purchased Services	\$18,736.36	\$13,384.96		\$32,121.32
600 Supplies				
610 General Supplies	63,835.81	45,603.26		109,439.07
650 Supplies & Fees – Technology Related	7,845.39	5,604.61		13,450.00
Total Supplies	\$71,681.20	\$51,207.87		\$122,889.07
700 Property				
752 Capital Equipment – Original and Additional	17,397.27	1,648.80		19,046.07
758 Capitalized Technology Software - Original	13,279.54	9,486.68		22,766.22
768 Capitalized Technology Software - Replacement	6,378.91	4,556.99		10,935.90
Total Property	\$37,055.72	\$15,692.47		\$52,748.19
800 Other Objects				
810 Dues and Fees	20.42	14.58		35.00
Total Other Objects	\$20.42	\$14.58		\$35.00
Total 2240 Computer-Assisted Instruction Support Services	\$272,175.58	\$183,658.25		\$455,833.83

General Fund (10)

2250 School Library Services

100 Personnel Services – Salaries

	<u>Elementary</u>	<u>Secondary</u>	<u>Federal</u>	<u>Total</u>
100 Personnel Services – Salaries	92,421.26	61,562.14		153,983.40
Total Personnel Services – Salaries	\$92,421.26	\$61,562.14		\$153,983.40

200 Personnel Services – Employee Benefits

210 Group Insurance – Contracted Provider	41.16	43.90		85.06
220 Social Security Contributions	6,948.23	4,602.14		11,550.37
230 PSERS Retirement Contributions	28,078.75	18,612.13		46,690.88
260 Workers' Compensation	393.16	261.85		655.01
270 Group Insurance – Self-Insurance	7,202.37	7,512.38		14,714.75
292 Health Savings Accounts	3,033.29	866.71		3,900.00
Total Personnel Services – Employee Benefits	\$45,696.96	\$31,899.11		\$77,596.07

600 Supplies

610 General Supplies	1,050.41	2,967.22		4,017.63
640 Books and Periodicals	1,709.79	3,790.93		5,500.72
650 Supplies & Fees – Technology Related	460.00	9,258.14		9,718.14
Total Supplies	\$3,220.20	\$16,016.29		\$19,236.49

700 Property

752 Capital Equipment – Original and Additional		5.00		5.00
Total Property		\$5.00		\$5.00

800 Other Objects

810 Dues and Fees	166.66	508.34		675.00
Total Other Objects	\$166.66	\$508.34		\$675.00

Total 2250 School Library Services

	\$141,505.08	\$109,990.88		\$251,495.96
--	---------------------	---------------------	--	---------------------

General Fund (10)

	<u>Elementary</u>	<u>Secondary</u>	<u>Federal</u>	<u>Total</u>
2260 Instruction and Curriculum Development Services				
100 Personnel Services – Salaries				
100 Personnel Services – Salaries	148,624.38	106,174.81		254,799.19
Total Personnel Services – Salaries	\$148,624.38	\$106,174.81		\$254,799.19
200 Personnel Services – Employee Benefits				
210 Group Insurance – Contracted Provider	301.28	215.23		516.51
220 Social Security Contributions	11,104.20	7,932.66		19,036.86
230 PSERS Retirement Contributions	44,467.61	31,766.94		76,234.55
260 Workers' Compensation	631.95	451.46		1,083.41
270 Group Insurance – Self-Insurance	13,080.47	9,344.47		22,424.94
292 Health Savings Accounts	2,274.87	1,625.13		3,900.00
Total Personnel Services – Employee Benefits	\$71,860.38	\$51,335.89		\$123,196.27
300 Purchased Professional and Technical Services				
324 Professional Educational Services – Employee Training and Development Services	72.91	52.09		125.00
Total Purchased Professional and Technical Services	\$72.91	\$52.09		\$125.00
500 Other Purchased Services				
580 Travel	1,189.53	849.79		2,039.32
Total Other Purchased Services	\$1,189.53	\$849.79		\$2,039.32
600 Supplies				
610 General Supplies	1,524.59	1,089.15		2,613.74
640 Books and Periodicals	3,206.60	2,290.75		5,497.35
Total Supplies	\$4,731.19	\$3,379.90		\$8,111.09
Total 2260 Instruction and Curriculum Development Services	\$226,478.39	\$161,792.48		\$388,270.87

General Fund (10)

2270 Instructional Staff Professional Development Services	<u>Elementary</u>	<u>Secondary</u>	<u>Federal</u>	<u>Total</u>
100 Personnel Services – Salaries				
100 Personnel Services – Salaries	2,566.41	5,133.59		7,700.00
Total Personnel Services – Salaries	\$2,566.41	\$5,133.59		\$7,700.00
200 Personnel Services – Employee Benefits				
220 Social Security Contributions	190.03	380.11		570.14
230 PSERS Retirement Contributions	779.71	1,559.66		2,339.37
240 Tuition Reimbursement	86,259.40	103,905.90		190,165.30
260 Workers' Compensation	10.91	21.83		32.74
Total Personnel Services – Employee Benefits	\$87,240.05	\$105,867.50		\$193,107.55
300 Purchased Professional and Technical Services				
322 Professional Educational Services – lus	998.61	713.39		1,712.00
324 Professional Educational Services – Employee Training and Development Services	9,005.81	9,380.19		18,386.00
330 Other Professional Services	436.31	311.69		748.00
Total Purchased Professional and Technical Services	\$10,440.73	\$10,405.27		\$20,846.00
500 Other Purchased Services				
580 Travel	443.16	549.70		992.86
Total Other Purchased Services	\$443.16	\$549.70		\$992.86
600 Supplies				
610 General Supplies	224.78	160.58		385.36
630 Food	6.35	4.53		10.88
640 Books and Periodicals	550.82	393.49		944.31
Total Supplies	\$781.95	\$558.60		\$1,340.55
800 Other Objects				
810 Dues and Fees	233.32	166.68		400.00
Total Other Objects	\$233.32	\$166.68		\$400.00
Total 2270 Instructional Staff Professional Development Services	\$101,705.62	\$122,681.34		\$224,386.96

General Fund (10)

	<u>Elementary</u>	<u>Secondary</u>	<u>Federal</u>	<u>Total</u>
2300 Support Services – Administration				
100 Personnel Services – Salaries				
100 Personnel Services – Salaries	332,095.41	386,667.55		951,652.71
Total Personnel Services – Salaries	\$332,095.41	\$386,667.55		\$951,652.71
200 Personnel Services – Employee Benefits				
210 Group Insurance – Contracted Provider	624.65	744.35		1,784.55
220 Social Security Contributions	24,600.20	28,603.58		69,861.56
230 PSERS Retirement Contributions	99,272.85	114,218.77		269,227.11
260 Workers' Compensation	1,412.25	1,644.48		4,047.06
270 Group Insurance – Self-Insurance	49,288.76	58,983.00		125,204.83
280 Other Post-Employment Benefits (OPEB)		4,238.40		4,238.40
292 Health Savings Accounts	6,933.16	9,966.84		22,100.00
Total Personnel Services – Employee Benefits	\$182,131.87	\$218,399.42		\$496,463.51
300 Purchased Professional and Technical Services				
310 Official / Administrative Services				70,104.03
324 Professional Educational Services – Employee Training and Development Services	2,210.18	23.33		8,703.51
330 Other Professional Services				91,728.50
390 Other Purchased Professional and Technical Services	214.36	37.14		251.50
Total Purchased Professional and Technical Services	\$2,424.54	\$60.47		\$170,787.54
400 Purchased Property Services				
430 Repairs and Maintenance Services		431.90		431.90
440 Rentals				3,127.08
Total Purchased Property Services		\$431.90		\$3,558.98
500 Other Purchased Services				
520 Insurance – General	233.33	166.67		30,457.00
530 Communications	55.06	39.33		18,514.93
549 Other Advertising/Public Relations				31,157.27
580 Travel	341.62	2,417.39	175.50	10,532.63
Total Other Purchased Services	\$630.01	\$2,623.39	\$175.50	\$90,661.83
600 Supplies				
610 General Supplies	2,942.62	20,150.88		26,240.67
630 Food				2,378.71
650 Supplies & Fees – Technology Related				300.00
Total Supplies	\$2,942.62	\$20,150.88		\$28,919.38
700 Property				
752 Capital Equipment – Original and Additional	33.30	6,992.43		7,025.73
762 Capitalized Equipment - Replacement		5,873.49		5,873.49
Total Property	\$33.30	\$12,865.92		\$12,899.22
800 Other Objects				
810 Dues and Fees	2,276.59	1,578.32		21,814.41
Total Other Objects	\$2,276.59	\$1,578.32		\$21,814.41
Total 2300 Support Services – Administration	\$522,534.34	\$642,777.85	\$175.50	\$1,776,757.58

General Fund (10)

2310 Board Services

Elementary

Secondary

Federal

Total

300 Purchased Professional and Technical Services

330 Other Professional Services

7,450.00

Total Purchased Professional and Technical Services

\$7,450.00

500 Other Purchased Services

520 Insurance – General

29,934.00

549 Other Advertising/Public Relations

31,157.27

Total Other Purchased Services

\$61,091.27

600 Supplies

610 General Supplies

278.89

Total Supplies

\$278.89

800 Other Objects

810 Dues and Fees

11,513.82

Total Other Objects

\$11,513.82

Total 2310 Board Services

\$80,333.98

General Fund (10)

	<u>Elementary</u>	<u>Secondary</u>	<u>Federal</u>	<u>Total</u>
2330 Tax Assessment and Collection Services				
100 Personnel Services – Salaries				
100 Personnel Services – Salaries				49,437.30
Total Personnel Services – Salaries				\$49,437.30
200 Personnel Services – Employee Benefits				
220 Social Security Contributions				3,781.95
260 Workers’ Compensation				210.24
Total Personnel Services – Employee Benefits				\$3,992.19
300 Purchased Professional and Technical Services				
310 Official / Administrative Services				70,104.03
330 Other Professional Services				200.00
Total Purchased Professional and Technical Services				\$70,304.03
500 Other Purchased Services				
530 Communications				7,230.04
Total Other Purchased Services				\$7,230.04
600 Supplies				
610 General Supplies				1,527.50
Total Supplies				\$1,527.50
800 Other Objects				
810 Dues and Fees				60.68
Total Other Objects				\$60.68
Total 2330 Tax Assessment and Collection Services				\$132,551.74

General Fund (10)

2350 Legal and Accounting Services

Elementary

Secondary

Federal

Total

300 Purchased Professional and Technical Services

330 Other Professional Services

50,828.50

Total Purchased Professional and Technical Services

\$50,828.50

Total 2350 Legal and Accounting Services

\$50,828.50

General Fund (10)

	<u>Elementary</u>	<u>Secondary</u>	<u>Federal</u>	<u>Total</u>
2360 Office of the Superintendent / Executive Director Services				
100 Personnel Services – Salaries				
100 Personnel Services – Salaries				183,452.45
Total Personnel Services – Salaries				\$183,452.45
200 Personnel Services – Employee Benefits				
210 Group Insurance – Contracted Provider				415.55
220 Social Security Contributions				12,875.83
230 PSERS Retirement Contributions				55,735.49
260 Workers' Compensation				780.09
270 Group Insurance – Self-Insurance				16,933.07
292 Health Savings Accounts				5,200.00
Total Personnel Services – Employee Benefits				\$91,940.03
300 Purchased Professional and Technical Services				
324 Professional Educational Services – Employee Training and Development Services				6,470.00
330 Other Professional Services				33,250.00
Total Purchased Professional and Technical Services				\$39,720.00
500 Other Purchased Services				
520 Insurance – General				123.00
530 Communications	55.06	39.33		94.39
580 Travel				7,598.12
Total Other Purchased Services	\$55.06	\$39.33		\$7,815.51
600 Supplies				
610 General Supplies				1,340.78
630 Food				2,378.71
650 Supplies & Fees – Technology Related				300.00
Total Supplies				\$4,019.49
800 Other Objects				
810 Dues and Fees				6,385.00
Total Other Objects				\$6,385.00
Total 2360 Office of the Superintendent / Executive Director Services	\$55.06	\$39.33		\$333,332.48

General Fund (10)

2380 Office of the Principal Services

	<u>Elementary</u>	<u>Secondary</u>	<u>Federal</u>	<u>Total</u>
100 Personnel Services – Salaries				
100 Personnel Services – Salaries	332,095.41	386,667.55		718,762.96
Total Personnel Services – Salaries	\$332,095.41	\$386,667.55		\$718,762.96
200 Personnel Services – Employee Benefits				
210 Group Insurance – Contracted Provider	624.65	744.35		1,369.00
220 Social Security Contributions	24,600.20	28,603.58		53,203.78
230 PSERS Retirement Contributions	99,272.85	114,218.77		213,491.62
260 Workers' Compensation	1,412.25	1,644.48		3,056.73
270 Group Insurance – Self-Insurance	49,288.76	58,983.00		108,271.76
280 Other Post-Employment Benefits (OPEB)		4,238.40		4,238.40
292 Health Savings Accounts	6,933.16	9,966.84		16,900.00
Total Personnel Services – Employee Benefits	\$182,131.87	\$218,399.42		\$400,531.29
300 Purchased Professional and Technical Services				
324 Professional Educational Services – Employee Training and Development Services	2,210.18	23.33		2,233.51
390 Other Purchased Professional and Technical Services	214.36	37.14		251.50
Total Purchased Professional and Technical Services	\$2,424.54	\$60.47		\$2,485.01
400 Purchased Property Services				
430 Repairs and Maintenance Services		431.90		431.90
Total Purchased Property Services		\$431.90		\$431.90
500 Other Purchased Services				
520 Insurance – General	233.33	166.67		400.00
580 Travel	341.62	2,417.39	175.50	2,934.51
Total Other Purchased Services	\$574.95	\$2,584.06	\$175.50	\$3,334.51
600 Supplies				
610 General Supplies	2,942.62	20,150.88		23,093.50
Total Supplies	\$2,942.62	\$20,150.88		\$23,093.50
700 Property				
752 Capital Equipment – Original and Additional	33.30	6,992.43		7,025.73
762 Capitalized Equipment - Replacement		5,873.49		5,873.49
Total Property	\$33.30	\$12,865.92		\$12,899.22
800 Other Objects				
810 Dues and Fees	2,276.59	1,578.32		3,854.91
Total Other Objects	\$2,276.59	\$1,578.32		\$3,854.91
Total 2380 Office of the Principal Services	\$522,479.28	\$642,738.52	\$175.50	\$1,165,393.30

LEA : 112015203 Littlestown Area SD

Printed 10/31/2017 3:17:07 PM

General Fund (10)

	<u>Elementary</u>	<u>Secondary</u>	<u>Federal</u>	<u>Total</u>
2390 Other Administration Services				
400 <u>Purchased Property Services</u>				
440 Rentals				3,127.08
Total Purchased Property Services				\$3,127.08
500 <u>Other Purchased Services</u>				
530 Communications				11,190.50
Total Other Purchased Services				\$11,190.50
Total 2390 Other Administration Services				\$14,317.58

General Fund (10)

	<u>Elementary</u>	<u>Secondary</u>	<u>Federal</u>	<u>Total</u>
2400 Support Services – Pupil Health				
100 Personnel Services – Salaries				
100 Personnel Services – Salaries				148,719.42
Total Personnel Services – Salaries				\$148,719.42
200 Personnel Services – Employee Benefits				
210 Group Insurance – Contracted Provider				112.50
220 Social Security Contributions				11,041.01
230 PSERS Retirement Contributions				45,091.75
260 Workers' Compensation				632.32
270 Group Insurance – Self-Insurance				23,487.79
292 Health Savings Accounts				3,900.00
Total Personnel Services – Employee Benefits				\$84,265.37
300 Purchased Professional and Technical Services				
330 Other Professional Services				1,985.00
Total Purchased Professional and Technical Services				\$1,985.00
400 Purchased Property Services				
430 Repairs and Maintenance Services				270.00
Total Purchased Property Services				\$270.00
600 Supplies				
610 General Supplies				4,958.33
Total Supplies				\$4,958.33
800 Other Objects				
810 Dues and Fees				624.75
Total Other Objects				\$624.75
Total 2400 Support Services – Pupil Health				\$240,822.87

General Fund (10)

2440 Nursing Services

	<u>Elementary</u>	<u>Secondary</u>	<u>Federal</u>	<u>Total</u>
100 Personnel Services – Salaries				
100 Personnel Services – Salaries				148,719.42
Total Personnel Services – Salaries				\$148,719.42
200 Personnel Services – Employee Benefits				
210 Group Insurance – Contracted Provider				112.50
220 Social Security Contributions				11,041.01
230 PSERS Retirement Contributions				45,091.75
260 Workers' Compensation				632.32
270 Group Insurance – Self-Insurance				23,487.79
292 Health Savings Accounts				3,900.00
Total Personnel Services – Employee Benefits				\$84,265.37
300 Purchased Professional and Technical Services				
330 Other Professional Services				1,985.00
Total Purchased Professional and Technical Services				\$1,985.00
400 Purchased Property Services				
430 Repairs and Maintenance Services				270.00
Total Purchased Property Services				\$270.00
600 Supplies				
610 General Supplies				4,958.33
Total Supplies				\$4,958.33
800 Other Objects				
810 Dues and Fees				624.75
Total Other Objects				\$624.75
Total 2440 Nursing Services				\$240,822.87

General Fund (10)

2500 Support Services – Business

Elementary Secondary Federal Total

100 Personnel Services – Salaries

100 Personnel Services – Salaries 173,171.29

Total Personnel Services – Salaries \$173,171.29

200 Personnel Services – Employee Benefits

210 Group Insurance – Contracted Provider 318.33

220 Social Security Contributions 12,556.19

230 PSERS Retirement Contributions 52,794.60

260 Workers' Compensation 715.12

270 Group Insurance – Self-Insurance 22,553.66

292 Health Savings Accounts 5,200.00

Total Personnel Services – Employee Benefits \$94,137.90

300 Purchased Professional and Technical Services

324 Professional Educational Services – Employee Training and Development Services 315.00

330 Other Professional Services 7,832.40

390 Other Purchased Professional and Technical Services (15.00)

Total Purchased Professional and Technical Services \$8,132.40

400 Purchased Property Services

410 Cleaning Services 606.10

Total Purchased Property Services \$606.10

500 Other Purchased Services

520 Insurance – General 158.00

530 Communications 118.21

580 Travel 1,601.05

Total Other Purchased Services \$1,877.26

600 Supplies

610 General Supplies 179.06

650 Supplies & Fees – Technology Related 299.50

Total Supplies \$478.56

800 Other Objects

810 Dues and Fees 6,131.75

Total Other Objects \$6,131.75

Total 2500 Support Services – Business \$284,535.26

General Fund (10)

2510 Fiscal Services

Elementary Secondary Federal Total

100 Personnel Services – Salaries				
100 Personnel Services – Salaries				173,171.29
Total Personnel Services – Salaries				\$173,171.29
200 Personnel Services – Employee Benefits				
210 Group Insurance – Contracted Provider				318.33
220 Social Security Contributions				12,556.19
230 PSERS Retirement Contributions				52,794.60
260 Workers' Compensation				715.12
270 Group Insurance – Self-Insurance				22,553.66
292 Health Savings Accounts				5,200.00
Total Personnel Services – Employee Benefits				\$94,137.90
300 Purchased Professional and Technical Services				
324 Professional Educational Services – Employee Training and Development Services				315.00
330 Other Professional Services				7,832.40
390 Other Purchased Professional and Technical Services				(15.00)
Total Purchased Professional and Technical Services				\$8,132.40
400 Purchased Property Services				
410 Cleaning Services				606.10
Total Purchased Property Services				\$606.10
500 Other Purchased Services				
520 Insurance – General				158.00
530 Communications				118.21
580 Travel				1,601.05
Total Other Purchased Services				\$1,877.26
600 Supplies				
610 General Supplies				179.06
650 Supplies & Fees – Technology Related				299.50
Total Supplies				\$478.56
800 Other Objects				
810 Dues and Fees				6,131.75
Total Other Objects				\$6,131.75
Total 2510 Fiscal Services				\$284,535.26

General Fund (10)

	<u>Elementary</u>	<u>Secondary</u>	<u>Federal</u>	<u>Total</u>
2511 Supervision of Fiscal Services - Head of Component				
100 Personnel Services – Salaries				
100 Personnel Services – Salaries				75,782.70
Total Personnel Services – Salaries				\$75,782.70
200 Personnel Services – Employee Benefits				
210 Group Insurance – Contracted Provider				172.15
220 Social Security Contributions				5,219.33
230 PSERS Retirement Contributions				23,023.72
260 Workers' Compensation				322.30
270 Group Insurance – Self-Insurance				16,073.54
292 Health Savings Accounts				2,600.00
Total Personnel Services – Employee Benefits				\$47,411.04
300 Purchased Professional and Technical Services				
324 Professional Educational Services – Employee Training and Development Services				(399.00)
330 Other Professional Services				7,144.73
390 Other Purchased Professional and Technical Services				(15.00)
Total Purchased Professional and Technical Services				\$6,730.73
400 Purchased Property Services				
410 Cleaning Services				606.10
Total Purchased Property Services				\$606.10
500 Other Purchased Services				
520 Insurance – General				158.00
530 Communications				118.21
580 Travel				952.83
Total Other Purchased Services				\$1,229.04
600 Supplies				
610 General Supplies				179.06
650 Supplies & Fees – Technology Related				299.50
Total Supplies				\$478.56
800 Other Objects				
810 Dues and Fees				5,628.75
Total Other Objects				\$5,628.75
Total 2511 Supervision of Fiscal Services - Head of Component				\$137,866.92

General Fund (10)

2513 Receiving and Disbursing Funds Services

Elementary Secondary Federal Total

100	<u>Personnel Services – Salaries</u>			
	100 Personnel Services – Salaries			29,291.70
Total Personnel Services – Salaries				\$29,291.70
200	<u>Personnel Services – Employee Benefits</u>			
	210 Group Insurance – Contracted Provider			27.44
	220 Social Security Contributions			2,240.81
	230 PSERS Retirement Contributions			8,899.21
	260 Workers' Compensation			124.59
Total Personnel Services – Employee Benefits				\$11,292.05
300	<u>Purchased Professional and Technical Services</u>			
	324 Professional Educational Services – Employee Training and Development Services			172.50
	330 Other Professional Services			72.75
Total Purchased Professional and Technical Services				\$245.25
500	<u>Other Purchased Services</u>			
	580 Travel			12.96
Total Other Purchased Services				\$12.96
800	<u>Other Objects</u>			
	810 Dues and Fees			65.00
Total Other Objects				\$65.00
Total 2513 Receiving and Disbursing Funds Services				\$40,906.96

General Fund (10)

2514 Payroll Services

Elementary

Secondary

Federal

Total

100 Personnel Services – Salaries

100 Personnel Services – Salaries

29,669.05

Total Personnel Services – Salaries

\$29,669.05

200 Personnel Services – Employee Benefits

210 Group Insurance – Contracted Provider

27.44

220 Social Security Contributions

2,147.71

230 PSERS Retirement Contributions

8,896.01

260 Workers' Compensation

124.56

270 Group Insurance – Self-Insurance

6,480.12

292 Health Savings Accounts

2,600.00

Total Personnel Services – Employee Benefits

\$20,275.84

300 Purchased Professional and Technical Services

324 Professional Educational Services – Employee Training and Development Services

272.50

330 Other Professional Services

295.92

Total Purchased Professional and Technical Services

\$568.42

500 Other Purchased Services

580 Travel

185.64

Total Other Purchased Services

\$185.64

800 Other Objects

810 Dues and Fees

65.00

Total Other Objects

\$65.00

Total 2514 Payroll Services

\$50,763.95

General Fund (10)

	<u>Elementary</u>	<u>Secondary</u>	<u>Federal</u>	<u>Total</u>
2515 Financial Accounting Services				
100 Personnel Services – Salaries				
100 Personnel Services – Salaries				38,427.84
Total Personnel Services – Salaries				\$38,427.84
200 Personnel Services – Employee Benefits				
210 Group Insurance – Contracted Provider				91.30
220 Social Security Contributions				2,948.34
230 PSERS Retirement Contributions				11,975.66
260 Workers' Compensation				143.67
Total Personnel Services – Employee Benefits				\$15,158.97
300 Purchased Professional and Technical Services				
324 Professional Educational Services – Employee Training and Development Services				269.00
330 Other Professional Services				319.00
Total Purchased Professional and Technical Services				\$588.00
500 Other Purchased Services				
580 Travel				449.62
Total Other Purchased Services				\$449.62
800 Other Objects				
810 Dues and Fees				373.00
Total Other Objects				\$373.00
Total 2515 Financial Accounting Services				\$54,997.43

General Fund (10)

	<u>Elementary</u>	<u>Secondary</u>	<u>Federal</u>	<u>Total</u>
2600 Operation and Maintenance of Plant Services				
100 Personnel Services – Salaries				
100 Personnel Services – Salaries				540,318.48
Total Personnel Services – Salaries				\$540,318.48
200 Personnel Services – Employee Benefits				
210 Group Insurance – Contracted Provider				559.28
220 Social Security Contributions				39,875.73
230 PSERS Retirement Contributions				140,209.77
260 Workers' Compensation				2,227.90
270 Group Insurance – Self-Insurance				97,085.07
292 Health Savings Accounts				16,900.00
Total Personnel Services – Employee Benefits				\$296,857.75
300 Purchased Professional and Technical Services				
324 Professional Educational Services – Employee Training and Development Services				1,049.46
330 Other Professional Services				24,193.46
Total Purchased Professional and Technical Services				\$25,242.92
400 Purchased Property Services				
410 Cleaning Services				69,249.59
420 Utility Services				63,701.89
430 Repairs and Maintenance Services				152,475.90
440 Rentals				414.00
Total Purchased Property Services				\$285,841.38
500 Other Purchased Services				
521 Fire Insurance				47,040.00
523 General Property and Liability Insurance				12,977.00
580 Travel				818.94
Total Other Purchased Services				\$60,835.94
600 Supplies				
610 General Supplies	100,095.65	72,779.53		172,875.18
620 Energy				280,491.23
650 Supplies & Fees – Technology Related				3,945.00
Total Supplies	\$100,095.65	\$72,779.53		\$457,311.41
700 Property				
752 Capital Equipment – Original and Additional				21,518.87
762 Capitalized Equipment - Replacement				10,450.28
Total Property				\$31,969.15
800 Other Objects				
810 Dues and Fees				1,663.05
Total Other Objects				\$1,663.05
Total 2600 Operation and Maintenance of Plant Services	\$100,095.65	\$72,779.53		\$1,700,040.08

General Fund (10)

	<u>Elementary</u>	<u>Secondary</u>	<u>Federal</u>	<u>Total</u>
2610 Supervision of Operation and Maintenance of Plant Services				
100 Personnel Services – Salaries				
100 Personnel Services – Salaries				78,248.96
Total Personnel Services – Salaries				\$78,248.96
200 Personnel Services – Employee Benefits				
210 Group Insurance – Contracted Provider				173.32
220 Social Security Contributions				5,925.33
230 PSERS Retirement Contributions				23,225.21
260 Workers' Compensation				332.84
270 Group Insurance – Self-Insurance				6,142.88
292 Health Savings Accounts				1,300.00
Total Personnel Services – Employee Benefits				\$37,099.58
300 Purchased Professional and Technical Services				
324 Professional Educational Services – Employee Training and Development Services				339.96
Total Purchased Professional and Technical Services				\$339.96
500 Other Purchased Services				
521 Fire Insurance				47,040.00
523 General Property and Liability Insurance				12,977.00
580 Travel				725.34
Total Other Purchased Services				\$60,742.34
600 Supplies				
610 General Supplies	25.02	17.88		42.90
650 Supplies & Fees – Technology Related				3,945.00
Total Supplies	\$25.02	\$17.88		\$3,987.90
800 Other Objects				
810 Dues and Fees				651.05
Total Other Objects				\$651.05
Total 2610 Supervision of Operation and Maintenance of Plant Services	\$25.02	\$17.88		\$181,069.79

General Fund (10)

	<u>Elementary</u>	<u>Secondary</u>	<u>Federal</u>	<u>Total</u>
2611 Supervision of Operation and Maintenance of Plant Services – Head of Component				
100 Personnel Services – Salaries				
100 Personnel Services – Salaries				78,248.96
Total Personnel Services – Salaries				\$78,248.96
200 Personnel Services – Employee Benefits				
210 Group Insurance – Contracted Provider				173.32
220 Social Security Contributions				5,925.33
230 PSERS Retirement Contributions				23,225.21
260 Workers' Compensation				332.84
270 Group Insurance – Self-Insurance				6,142.88
292 Health Savings Accounts				1,300.00
Total Personnel Services – Employee Benefits				\$37,099.58
300 Purchased Professional and Technical Services				
324 Professional Educational Services – Employee Training and Development Services				339.96
Total Purchased Professional and Technical Services				\$339.96
500 Other Purchased Services				
521 Fire Insurance				47,040.00
523 General Property and Liability Insurance				12,977.00
580 Travel				725.34
Total Other Purchased Services				\$60,742.34
600 Supplies				
610 General Supplies	25.02	17.88		42.90
650 Supplies & Fees – Technology Related				3,945.00
Total Supplies	\$25.02	\$17.88		\$3,987.90
800 Other Objects				
810 Dues and Fees				651.05
Total Other Objects				\$651.05
Total 2611 Supervision of Operation and Maintenance of Plant Services – Head of Component	\$25.02	\$17.88		\$181,069.79

General Fund (10)

	<u>Elementary</u>	<u>Secondary</u>	<u>Federal</u>	<u>Total</u>
2620 Operation of Buildings Services				
100 Personnel Services – Salaries				
100 Personnel Services – Salaries				259,124.04
Total Personnel Services – Salaries				\$259,124.04
200 Personnel Services – Employee Benefits				
210 Group Insurance – Contracted Provider				292.66
220 Social Security Contributions				18,737.38
230 PSERS Retirement Contributions				76,097.58
260 Workers' Compensation				998.68
270 Group Insurance – Self-Insurance				66,568.70
292 Health Savings Accounts				11,700.00
Total Personnel Services – Employee Benefits				\$174,395.00
300 Purchased Professional and Technical Services				
324 Professional Educational Services – Employee Training and Development Services				709.50
330 Other Professional Services				12,502.57
Total Purchased Professional and Technical Services				\$13,212.07
400 Purchased Property Services				
410 Cleaning Services				68,582.09
420 Utility Services				63,701.89
430 Repairs and Maintenance Services				147,049.31
Total Purchased Property Services				\$279,333.29
500 Other Purchased Services				
580 Travel				93.60
Total Other Purchased Services				\$93.60
600 Supplies				
610 General Supplies	70,533.96	51,661.13		122,195.09
620 Energy				278,734.90
Total Supplies	\$70,533.96	\$51,661.13		\$400,929.99
700 Property				
752 Capital Equipment – Original and Additional				19,581.72
762 Capitalized Equipment - Replacement				8,025.28
Total Property				\$27,607.00
800 Other Objects				
810 Dues and Fees				1,012.00
Total Other Objects				\$1,012.00
Total 2620 Operation of Buildings Services	\$70,533.96	\$51,661.13		\$1,155,706.99

General Fund (10)

	<u>Elementary</u>	<u>Secondary</u>	<u>Federal</u>	<u>Total</u>
2630 Care and Upkeep of Grounds Services				
100 Personnel Services – Salaries				
100 Personnel Services – Salaries				158,002.12
Total Personnel Services – Salaries				\$158,002.12
200 Personnel Services – Employee Benefits				
210 Group Insurance – Contracted Provider				93.30
220 Social Security Contributions				11,774.89
230 PSERS Retirement Contributions				40,880.52
260 Workers' Compensation				705.27
270 Group Insurance – Self-Insurance				24,373.49
292 Health Savings Accounts				3,900.00
Total Personnel Services – Employee Benefits				\$81,727.47
300 Purchased Professional and Technical Services				
330 Other Professional Services				11,690.89
Total Purchased Professional and Technical Services				\$11,690.89
400 Purchased Property Services				
410 Cleaning Services				667.50
430 Repairs and Maintenance Services				5,426.59
440 Rentals				414.00
Total Purchased Property Services				\$6,508.09
600 Supplies				
610 General Supplies	29,295.46	20,928.20		50,223.66
620 Energy				1,756.33
Total Supplies	\$29,295.46	\$20,928.20		\$51,979.99
700 Property				
752 Capital Equipment – Original and Additional				1,937.15
762 Capitalized Equipment - Replacement				2,425.00
Total Property				\$4,362.15
Total 2630 Care and Upkeep of Grounds Services	\$29,295.46	\$20,928.20		\$314,270.71

General Fund (10)

2660 Safety and Security Services

100 Personnel Services – Salaries

	<u>Elementary</u>	<u>Secondary</u>	<u>Federal</u>	<u>Total</u>
100 Personnel Services – Salaries				44,943.36
Total Personnel Services – Salaries				\$44,943.36
200 Personnel Services – Employee Benefits				
220 Social Security Contributions				3,438.13
230 PSERS Retirement Contributions				6.46
260 Workers’ Compensation				191.11
Total Personnel Services – Employee Benefits				\$3,635.70
600 Supplies				
610 General Supplies	241.21	172.32		413.53
Total Supplies	\$241.21	\$172.32		\$413.53
Total 2660 Safety and Security Services	\$241.21	\$172.32		\$48,992.59

General Fund (10)

	<u>Elementary</u>	<u>Secondary</u>	<u>Federal</u>	<u>Total</u>
2700 Student Transportation Services				
100 Personnel Services – Salaries				
100 Personnel Services – Salaries				338,083.73
Total Personnel Services – Salaries				\$338,083.73
200 Personnel Services – Employee Benefits				
210 Group Insurance – Contracted Provider				291.96
220 Social Security Contributions				25,777.59
230 PSERS Retirement Contributions				124,944.76
250 Unemployment Compensation				3,529.54
260 Workers' Compensation				1,438.01
270 Group Insurance – Self-Insurance				13,500.03
292 Health Savings Accounts				866.67
Total Personnel Services – Employee Benefits				\$170,348.56
300 Purchased Professional and Technical Services				
324 Professional Educational Services – Employee Training and Development Services				375.00
330 Other Professional Services				5,609.00
Total Purchased Professional and Technical Services				\$5,984.00
400 Purchased Property Services				
430 Repairs and Maintenance Services				28,911.42
440 Rentals				165.00
Total Purchased Property Services				\$29,076.42
500 Other Purchased Services				
513 Contracted Carriers				582,714.31
516 Student Transportation Services From the IU				6,024.98
519 Student Transportation Services From Other Sources				885.96
522 Automotive Liability Insurance				23,203.00
Total Other Purchased Services				\$612,828.25
600 Supplies				
610 General Supplies				42,889.77
620 Energy				45,074.73
Total Supplies				\$87,964.50
700 Property				
752 Capital Equipment – Original and Additional				98,680.82
Total Property				\$98,680.82
800 Other Objects				
810 Dues and Fees				341.00
Total Other Objects				\$341.00
Total 2700 Student Transportation Services				\$1,343,307.28

General Fund (10)

	<u>Elementary</u>	<u>Secondary</u>	<u>Federal</u>	<u>Total</u>
2710 Supervision of Student Transportation Services				
100 Personnel Services – Salaries				
100 Personnel Services – Salaries				75,693.64
Total Personnel Services – Salaries				\$75,693.64
200 Personnel Services – Employee Benefits				
210 Group Insurance – Contracted Provider				132.16
220 Social Security Contributions				5,837.91
230 PSERS Retirement Contributions				21,023.23
260 Workers' Compensation				321.82
270 Group Insurance – Self-Insurance				2,163.76
292 Health Savings Accounts				216.67
Total Personnel Services – Employee Benefits				\$29,695.55
300 Purchased Professional and Technical Services				
324 Professional Educational Services – Employee Training and Development Services				75.00
Total Purchased Professional and Technical Services				\$75.00
600 Supplies				
610 General Supplies				3,987.96
Total Supplies				\$3,987.96
800 Other Objects				
810 Dues and Fees				125.00
Total Other Objects				\$125.00
Total 2710 Supervision of Student Transportation Services				\$109,577.15

General Fund (10)

2711 Supervision of Student Transportation Services – Head of Component	<u>Elementary</u>	<u>Secondary</u>	<u>Federal</u>	<u>Total</u>
100 Personnel Services – Salaries				
100 Personnel Services – Salaries				75,693.64
Total Personnel Services – Salaries				\$75,693.64
200 Personnel Services – Employee Benefits				
210 Group Insurance – Contracted Provider				132.16
220 Social Security Contributions				5,837.91
230 PSERS Retirement Contributions				21,023.23
260 Workers' Compensation				321.82
270 Group Insurance – Self-Insurance				2,163.76
292 Health Savings Accounts				216.67
Total Personnel Services – Employee Benefits				\$29,695.55
300 Purchased Professional and Technical Services				
324 Professional Educational Services – Employee Training and Development Services				75.00
Total Purchased Professional and Technical Services				\$75.00
600 Supplies				
610 General Supplies				3,987.96
Total Supplies				\$3,987.96
800 Other Objects				
810 Dues and Fees				125.00
Total Other Objects				\$125.00
Total 2711 Supervision of Student Transportation Services – Head of Component				\$109,577.15

General Fund (10)

2720 Vehicle Operation Services

100 Personnel Services – Salaries

	<u>Elementary</u>	<u>Secondary</u>	<u>Federal</u>	<u>Total</u>
100 Personnel Services – Salaries				219,518.50

Total Personnel Services – Salaries				\$219,518.50
--	--	--	--	---------------------

200 Personnel Services – Employee Benefits

210 Group Insurance – Contracted Provider				132.36
220 Social Security Contributions				16,760.52
230 PSERS Retirement Contributions				90,896.64
250 Unemployment Compensation				3,529.54
260 Workers' Compensation				933.87
270 Group Insurance – Self-Insurance				3,112.75
292 Health Savings Accounts				650.00

Total Personnel Services – Employee Benefits				\$116,015.68
---	--	--	--	---------------------

300 Purchased Professional and Technical Services

324 Professional Educational Services – Employee Training and Development Services				300.00
330 Other Professional Services				5,609.00

Total Purchased Professional and Technical Services				\$5,909.00
--	--	--	--	-------------------

400 Purchased Property Services

430 Repairs and Maintenance Services				28,911.42
440 Rentals				165.00

Total Purchased Property Services				\$29,076.42
--	--	--	--	--------------------

500 Other Purchased Services

513 Contracted Carriers				366,879.26
516 Student Transportation Services From the IU				6,024.98
519 Student Transportation Services From Other Sources				885.96
522 Automotive Liability Insurance				23,203.00

Total Other Purchased Services				\$396,993.20
---------------------------------------	--	--	--	---------------------

600 Supplies

610 General Supplies				38,901.81
620 Energy				45,074.73

Total Supplies				\$83,976.54
-----------------------	--	--	--	--------------------

700 Property

752 Capital Equipment – Original and Additional				98,680.82
---	--	--	--	-----------

Total Property				\$98,680.82
-----------------------	--	--	--	--------------------

800 Other Objects

810 Dues and Fees				216.00
-------------------	--	--	--	--------

Total Other Objects				\$216.00
----------------------------	--	--	--	-----------------

Total 2720 Vehicle Operation Services				\$950,386.16
--	--	--	--	---------------------

General Fund (10)

2740 Vehicle Servicing and Maintenance Services

Elementary

Secondary

Federal

Total

100 Personnel Services – Salaries

100 Personnel Services – Salaries

42,871.59

Total Personnel Services – Salaries

\$42,871.59

200 Personnel Services – Employee Benefits

210 Group Insurance – Contracted Provider

27.44

220 Social Security Contributions

3,179.16

230 PSERS Retirement Contributions

13,024.89

260 Workers' Compensation

182.32

270 Group Insurance – Self-Insurance

8,223.52

Total Personnel Services – Employee Benefits

\$24,637.33

Total 2740 Vehicle Servicing and Maintenance Services

\$67,508.92

LEA : 112015203 Littlestown Area SD

Printed 10/31/2017 3:17:07 PM

General Fund (10)

2750 Nonpublic Transportation

Elementary

Secondary

Federal

Total

500 Other Purchased Services

513 Contracted Carriers

215,835.05

Total Other Purchased Services

\$215,835.05

Total 2750 Nonpublic Transportation

\$215,835.05

General Fund (10)

2800 Support Services – Central

Elementary

Secondary

Federal

Total

100 Personnel Services – Salaries

100 Personnel Services – Salaries 57,290.08

Total Personnel Services – Salaries \$57,290.08

200 Personnel Services – Employee Benefits

210 Group Insurance – Contracted Provider 130.37

220 Social Security Contributions 4,194.02

230 PSERS Retirement Contributions 17,405.37

240 Tuition Reimbursement 40,141.66

260 Workers' Compensation 243.57

270 Group Insurance – Self-Insurance 9,859.24

292 Health Savings Accounts 2,600.00

Total Personnel Services – Employee Benefits \$74,574.23

300 Purchased Professional and Technical Services

324 Professional Educational Services – Employee Training and Development Services 130.00

330 Other Professional Services 1,428.65

Total Purchased Professional and Technical Services \$1,558.65

400 Purchased Property Services

430 Repairs and Maintenance Services 440.00

440 Rentals 33,078.23

Total Purchased Property Services \$33,518.23

500 Other Purchased Services

580 Travel 179.76

Total Other Purchased Services \$179.76

600 Supplies

610 General Supplies 24,360.47

Total Supplies \$24,360.47

800 Other Objects

810 Dues and Fees 1,165.00

890 Miscellaneous Expenditures 95.00

Total Other Objects \$1,260.00

Total 2800 Support Services – Central \$192,741.42

General Fund (10)

2820 Information Services

Elementary

Secondary

Federal

Total

400 Purchased Property Services

440 Rentals

33,078.23

Total Purchased Property Services

\$33,078.23

600 Supplies

610 General Supplies

24,135.20

Total Supplies

\$24,135.20

Total 2820 Information Services

\$57,213.43

General Fund (10)

2829 Other Information Services

Elementary

Secondary

Federal

Total

400 Purchased Property Services

440 Rentals

33,078.23

Total Purchased Property Services

\$33,078.23

600 Supplies

610 General Supplies

24,135.20

Total Supplies

\$24,135.20

Total 2829 Other Information Services

\$57,213.43

General Fund (10)

	<u>Elementary</u>	<u>Secondary</u>	<u>Federal</u>	<u>Total</u>
2831 Supervision of Staff Services				
100 Personnel Services – Salaries				
100 Personnel Services – Salaries				57,290.08
Total Personnel Services – Salaries				\$57,290.08
200 Personnel Services – Employee Benefits				
210 Group Insurance – Contracted Provider				130.37
220 Social Security Contributions				4,194.02
230 PSERS Retirement Contributions				17,405.37
260 Workers' Compensation				243.57
270 Group Insurance – Self-Insurance				9,859.24
292 Health Savings Accounts				2,600.00
Total Personnel Services – Employee Benefits				\$34,432.57
300 Purchased Professional and Technical Services				
324 Professional Educational Services – Employee Training and Development Services				130.00
330 Other Professional Services				1,428.65
Total Purchased Professional and Technical Services				\$1,558.65
400 Purchased Property Services				
430 Repairs and Maintenance Services				440.00
Total Purchased Property Services				\$440.00
500 Other Purchased Services				
580 Travel				179.76
Total Other Purchased Services				\$179.76
600 Supplies				
610 General Supplies				225.27
Total Supplies				\$225.27
800 Other Objects				
810 Dues and Fees				1,165.00
Total Other Objects				\$1,165.00
Total 2831 Supervision of Staff Services				\$95,291.33

LEA : 112015203 Littlestown Area SD

Printed 10/31/2017 3:17:07 PM

General Fund (10)

2832 Recruitment and Placement Services

Elementary

Secondary

Federal

Total

800 Other Objects

890 Miscellaneous Expenditures

95.00

Total Other Objects

\$95.00

Total 2832 Recruitment and Placement Services

\$95.00

General Fund (10)

2834 Staff Development Services – Non-Instructional, Certified Staff Only

Elementary

Secondary

Federal

Total

200 Personnel Services – Employee Benefits

240 Tuition Reimbursement

40,141.66

Total Personnel Services – Employee Benefits

\$40,141.66

Total 2834 Staff Development Services – Non-Instructional, Certified Staff Only

\$40,141.66

LEA : 112015203 Littlestown Area SD

Printed 10/31/2017 3:17:07 PM

General Fund (10)

2900 Other Support Services

Elementary

Secondary

Federal

Total

500 Other Purchased Services

595 IU Payments By Withholding

18,019.48

Total Other Purchased Services

\$18,019.48

Total 2900 Other Support Services

\$18,019.48

General Fund (10)

2910 Support Services Not Listed Elsewhere In the 2000 Series

Elementary

Secondary

Federal

Total

500 Other Purchased Services

595 IU Payments By Withholding

18,019.48

Total Other Purchased Services

\$18,019.48

Total 2910 Support Services Not Listed Elsewhere In the 2000 Series

\$18,019.48

General Fund (10)

3000 Operation of Non-Instructional Services	<u>Total</u>
100 Personnel Services – Salaries	
100 Personnel Services – Salaries	277,995.39
Total Personnel Services – Salaries	\$277,995.39
200 Personnel Services – Employee Benefits	
210 Group Insurance – Contracted Provider	145.46
220 Social Security Contributions	21,068.73
230 PSERS Retirement Contributions	88,676.79
260 Workers’ Compensation	1,246.88
270 Group Insurance – Self-Insurance	7,232.66
292 Health Savings Accounts	1,300.00
Total Personnel Services – Employee Benefits	\$119,670.52
300 Purchased Professional and Technical Services	
324 Professional Educational Services – Employee Training and Development Services	1,693.39
330 Other Professional Services	23,170.71
390 Other Purchased Professional and Technical Services	49,423.50
Total Purchased Professional and Technical Services	\$74,287.60
400 Purchased Property Services	
410 Cleaning Services	15,112.32
430 Repairs and Maintenance Services	276.15
440 Rentals	1,839.10
490 Other Purchased Property Services	391.10
Total Purchased Property Services	\$17,618.67
500 Other Purchased Services	
520 Insurance – General	6,676.00
580 Travel	1,258.65
Total Other Purchased Services	\$7,934.65
600 Supplies	
610 General Supplies	23,722.34
Total Supplies	\$23,722.34
700 Property	
752 Capital Equipment – Original and Additional	3,926.42
762 Capitalized Equipment - Replacement	6,721.68
Total Property	\$10,648.10
800 Other Objects	
810 Dues and Fees	6,428.07
Total Other Objects	\$6,428.07
Total 3000 Operation of Non-Instructional Services	\$538,305.34

General Fund (10)

3300 Community Services

Elementary

Secondary

Federal

Total

300 Purchased Professional and Technical Services

330 Other Professional Services

3,570.71

Total Purchased Professional and Technical Services

\$3,570.71

600 Supplies

610 General Supplies

602.59

Total Supplies

\$602.59

Total 3300 Community Services

\$4,173.30

General Fund (10)

5000 Other Expenditures and Financing Uses

Total

800 Other Objects

830 Interest 1,076,132.90

Total Other Objects \$1,076,132.90

900 Other Uses of Funds

910 Redemption of Principal 793,787.00

930 Fund Transfers 71,931.15

932 Capital Reserve Fund Transfers Applicable To Fund 32 1,230,000.00

Total Other Uses of Funds \$2,095,718.15

Total 5000 Other Expenditures and Financing Uses \$3,171,851.05

LEA : 112015203 Littlestown Area SD

Printed 10/31/2017 3:17:21 PM

General Fund (10)

	<u>Elementary</u>	<u>Secondary</u>	<u>Federal</u>	<u>Total</u>
5100 Debt Service / Other Expenditures and Financing Uses				
800 Other Objects				
830 Interest				1,076,132.90
Total Other Objects				\$1,076,132.90
900 Other Uses of Funds				
910 Redemption of Principal				793,787.00
Total Other Uses of Funds				\$793,787.00
Total 5100 Debt Service / Other Expenditures and Financing Uses				\$1,869,919.90

General Fund (10)

5110 Debt Service

Elementary

Secondary

Federal

Total

800 Other Objects

830 Interest

1,076,132.90

Total Other Objects

\$1,076,132.90

900 Other Uses of Funds

910 Redemption of Principal

793,787.00

Total Other Uses of Funds

\$793,787.00

Total 5110 Debt Service

\$1,869,919.90

LEA : 112015203 Littlestown Area SD

Printed 10/31/2017 3:17:21 PM

General Fund (10)

5200 Interfund Transfers – Out

Elementary

Secondary

Federal

Total

900 Other Uses of Funds

930 Fund Transfers

71,931.15

932 Capital Reserve Fund Transfers Applicable To Fund 32

1,230,000.00

Total Other Uses of Funds

\$1,301,931.15

Total 5200 Interfund Transfers – Out

\$1,301,931.15

LEA : 112015203 Littlestown Area SD

Printed 10/31/2017 3:17:21 PM

General Fund (10)

5230 Capital Projects Fund Transfers

Elementary

Secondary

Federal

Total

900 Other Uses of Funds

932 Capital Reserve Fund Transfers Applicable To Fund 32

1,230,000.00

Total Other Uses of Funds

\$1,230,000.00

Total 5230 Capital Projects Fund Transfers

\$1,230,000.00

LEA : 112015203 Littlestown Area SD

Printed 10/31/2017 3:17:21 PM

General Fund (10)

5250 Enterprise Fund Transfers

Elementary

Secondary

Federal

Total

900 Other Uses of Funds

930 Fund Transfers

71,931.15

Total Other Uses of Funds

\$71,931.15

Total 5250 Enterprise Fund Transfers

\$71,931.15

Capital Reserve Fund - § 1431 (32)

2000 Support Services

100 Personnel Services – Salaries

100 Personnel Services – Salaries 7,625.71

Total Personnel Services – Salaries \$7,625.71

200 Personnel Services – Employee Benefits

220 Social Security Contributions 583.36

Total Personnel Services – Employee Benefits \$583.36

300 Purchased Professional and Technical Services

330 Other Professional Services 2,022.07

Total Purchased Professional and Technical Services \$2,022.07

400 Purchased Property Services

430 Repairs and Maintenance Services 6,094.88

Total Purchased Property Services \$6,094.88

700 Property

762 Capitalized Equipment - Replacement 160,726.00

Total Property \$160,726.00

Total 2000 Support Services \$177,052.02

Capital Reserve Fund - § 1431 (32)

2600 Operation and Maintenance of Plant Services

Elementary

Secondary

Federal

Total

100 Personnel Services – Salaries

100 Personnel Services – Salaries

7,625.71

Total Personnel Services – Salaries

\$7,625.71

200 Personnel Services – Employee Benefits

220 Social Security Contributions

583.36

Total Personnel Services – Employee Benefits

\$583.36

300 Purchased Professional and Technical Services

330 Other Professional Services

2,022.07

Total Purchased Professional and Technical Services

\$2,022.07

400 Purchased Property Services

430 Repairs and Maintenance Services

6,094.88

Total Purchased Property Services

\$6,094.88

700 Property

762 Capitalized Equipment - Replacement

80,988.00

Total Property

\$80,988.00

Total 2600 Operation and Maintenance of Plant Services

\$97,314.02

Capital Reserve Fund - § 1431 (32)

2610 Supervision of Operation and Maintenance of Plant Services

Elementary

Secondary

Federal

Total

300 Purchased Professional and Technical Services

330 Other Professional Services

2,022.07

Total Purchased Professional and Technical Services

\$2,022.07

Total 2610 Supervision of Operation and Maintenance of Plant Services

\$2,022.07

Capital Reserve Fund - § 1431 (32)

2611 Supervision of Operation and Maintenance of Plant Services – Head of Component

Elementary

Secondary

Federal

Total

300 Purchased Professional and Technical Services

330 Other Professional Services

2,022.07

Total Purchased Professional and Technical Services

\$2,022.07

Total 2611 Supervision of Operation and Maintenance of Plant Services – Head of Component

\$2,022.07

Capital Reserve Fund - § 1431 (32)

2620 Operation of Buildings Services

Elementary

Secondary

Federal

Total

100 Personnel Services – Salaries

100 Personnel Services – Salaries

7,625.71

Total Personnel Services – Salaries

\$7,625.71

200 Personnel Services – Employee Benefits

220 Social Security Contributions

583.36

Total Personnel Services – Employee Benefits

\$583.36

400 Purchased Property Services

430 Repairs and Maintenance Services

6,094.88

Total Purchased Property Services

\$6,094.88

700 Property

762 Capitalized Equipment - Replacement

80,988.00

Total Property

\$80,988.00

Total 2620 Operation of Buildings Services

\$95,291.95

LEA : 112015203 Littlestown Area SD

Printed 10/31/2017 3:17:15 PM

Capital Reserve Fund - § 1431 (32)

2700 Student Transportation Services

Elementary

Secondary

Federal

Total

700 Property

762 Capitalized Equipment - Replacement

79,738.00

Total Property

\$79,738.00

Total 2700 Student Transportation Services

\$79,738.00

LEA : 112015203 Littlestown Area SD

Printed 10/31/2017 3:17:15 PM

Capital Reserve Fund - § 1431 (32)

2710 Supervision of Student Transportation Services

Elementary

Secondary

Federal

Total

700 Property

762 Capitalized Equipment - Replacement

79,738.00

Total Property

\$79,738.00

Total 2710 Supervision of Student Transportation Services

\$79,738.00

Capital Reserve Fund - § 1431 (32)

2711 Supervision of Student Transportation Services – Head of Component

Elementary

Secondary

Federal

Total

700 Property

762 Capitalized Equipment - Replacement

79,738.00

Total Property

\$79,738.00

Total 2711 Supervision of Student Transportation Services – Head of Component

\$79,738.00

LEA : 112015203 Littlestown Area SD

Printed 10/31/2017 3:17:05 PM

Other Capital Projects Fund (39)

1000 Instruction	<u>Total</u>
700 Property	
752 Capital Equipment – Original and Additional	47,501.44
Total Property	\$47,501.44
Total 1000 Instruction	\$47,501.44

Other Capital Projects Fund (39)

1100 Regular Programs – Elementary / Secondary

Elementary

Secondary

Federal

Total

700 Property

752 Capital Equipment – Original and Additional

47,501.44

47,501.44

Total Property

\$47,501.44

\$47,501.44

Total 1100 Regular Programs – Elementary / Secondary

\$47,501.44

\$47,501.44

LEA : 112015203 Littlestown Area SD

Printed 10/31/2017 3:17:05 PM

Other Capital Projects Fund (39)

1110 Regular Programs

700 Property

752 Capital Equipment – Original and Additional

	<u>Elementary</u>	<u>Secondary</u>	<u>Federal</u>	<u>Total</u>
752 Capital Equipment – Original and Additional	47,501.44			47,501.44
Total Property	\$47,501.44			\$47,501.44
Total 1110 Regular Programs	\$47,501.44			\$47,501.44

Other Capital Projects Fund (39)

2000 Support Services

Total

300 Purchased Professional and Technical Services

330 Other Professional Services 209,481.26

Total Purchased Professional and Technical Services \$209,481.26

500 Other Purchased Services

523 General Property and Liability Insurance 14,169.00

Total Other Purchased Services \$14,169.00

600 Supplies

610 General Supplies 2,332.67

Total Supplies \$2,332.67

700 Property

752 Capital Equipment – Original and Additional 128,136.33

Total Property \$128,136.33

800 Other Objects

810 Dues and Fees 7,614,425.62

Total Other Objects \$7,614,425.62

Total 2000 Support Services \$7,968,544.88

LEA : 112015203 Littlestown Area SD

Printed 10/31/2017 3:17:16 PM

Other Capital Projects Fund (39)

2200 Support Services – Instructional Staff

700 Property

752 Capital Equipment – Original and Additional

Total Property

Total 2200 Support Services – Instructional Staff

	<u>Elementary</u>	<u>Secondary</u>	<u>Federal</u>	<u>Total</u>
752 Capital Equipment – Original and Additional	100,608.75			100,608.75
Total Property	\$100,608.75			\$100,608.75
Total 2200 Support Services – Instructional Staff	\$100,608.75			\$100,608.75

Other Capital Projects Fund (39)

2240 Computer-Assisted Instruction Support Services

Elementary

Secondary

Federal

Total

700 Property

752 Capital Equipment – Original and Additional

100,608.75

100,608.75

Total Property

\$100,608.75

\$100,608.75

Total 2240 Computer-Assisted Instruction Support Services

\$100,608.75

\$100,608.75

LEA : 112015203 Littlestown Area SD

Printed 10/31/2017 3:17:16 PM

Other Capital Projects Fund (39)

2500 Support Services – Business

Elementary

Secondary

Federal

Total

800 Other Objects

810 Dues and Fees

709.28

Total Other Objects

\$709.28

Total 2500 Support Services – Business

\$709.28

LEA : 112015203 Littlestown Area SD

Printed 10/31/2017 3:17:16 PM

Other Capital Projects Fund (39)

2510 Fiscal Services

Elementary

Secondary

Federal

Total

800 Other Objects

810 Dues and Fees

709.28

Total Other Objects

\$709.28

Total 2510 Fiscal Services

\$709.28

LEA : 112015203 Littlestown Area SD

Printed 10/31/2017 3:17:16 PM

Other Capital Projects Fund (39)

2511 Supervision of Fiscal Services - Head of Component

Elementary

Secondary

Federal

Total

800 Other Objects

810 Dues and Fees

709.28

Total Other Objects

\$709.28

Total 2511 Supervision of Fiscal Services - Head of Component

\$709.28

Other Capital Projects Fund (39)

2600 Operation and Maintenance of Plant Services

Elementary

Secondary

Federal

Total

300 Purchased Professional and Technical Services

330 Other Professional Services

209,481.26

Total Purchased Professional and Technical Services

\$209,481.26

500 Other Purchased Services

523 General Property and Liability Insurance

14,169.00

Total Other Purchased Services

\$14,169.00

600 Supplies

610 General Supplies

2,332.67

2,332.67

Total Supplies

\$2,332.67

\$2,332.67

700 Property

752 Capital Equipment – Original and Additional

27,527.58

Total Property

\$27,527.58

800 Other Objects

810 Dues and Fees

7,613,716.34

Total Other Objects

\$7,613,716.34

Total 2600 Operation and Maintenance of Plant Services

\$2,332.67

\$7,867,226.85

Other Capital Projects Fund (39)

	<u>Elementary</u>	<u>Secondary</u>	<u>Federal</u>	<u>Total</u>
2610 Supervision of Operation and Maintenance of Plant Services				
300 <u>Purchased Professional and Technical Services</u>				
330 Other Professional Services				209,481.26
Total Purchased Professional and Technical Services				\$209,481.26
500 <u>Other Purchased Services</u>				
523 General Property and Liability Insurance				14,169.00
Total Other Purchased Services				\$14,169.00
Total 2610 Supervision of Operation and Maintenance of Plant Services				\$223,650.26

Other Capital Projects Fund (39)

2611 Supervision of Operation and Maintenance of Plant Services – Head of Component

Elementary

Secondary

Federal

Total

300 Purchased Professional and Technical Services

330 Other Professional Services

209,481.26

Total Purchased Professional and Technical Services

\$209,481.26

500 Other Purchased Services

523 General Property and Liability Insurance

14,169.00

Total Other Purchased Services

\$14,169.00

Total 2611 Supervision of Operation and Maintenance of Plant Services – Head of Component

\$223,650.26

Other Capital Projects Fund (39)

2620 Operation of Buildings Services

	<u>Elementary</u>	<u>Secondary</u>	<u>Federal</u>	<u>Total</u>
600 <u>Supplies</u>				
610 General Supplies	2,332.67			2,332.67
Total Supplies	\$2,332.67			\$2,332.67
700 <u>Property</u>				
752 Capital Equipment – Original and Additional				27,527.58
Total Property				\$27,527.58
800 <u>Other Objects</u>				
810 Dues and Fees				7,613,716.34
Total Other Objects				\$7,613,716.34
Total 2620 Operation of Buildings Services	\$2,332.67			\$7,643,576.59

LEA : 112015203 Littlestown Area SD

Printed 10/31/2017 3:17:20 PM

Other Capital Projects Fund (39)

3000 Operation of Non-Instructional Services

Total

300 Purchased Professional and Technical Services

330 Other Professional Services

228,507.82

Total Purchased Professional and Technical Services

\$228,507.82

800 Other Objects

810 Dues and Fees

500.00

Total Other Objects

\$500.00

Total 3000 Operation of Non-Instructional Services

\$229,007.82

LEA : 112015203 Littlestown Area SD

Printed 10/31/2017 3:17:20 PM

Other Capital Projects Fund (39)

3200 Student Activities

Elementary

Secondary

Federal

Total

300 Purchased Professional and Technical Services

330 Other Professional Services

228,507.82

Total Purchased Professional and Technical Services

\$228,507.82

800 Other Objects

810 Dues and Fees

500.00

Total Other Objects

\$500.00

Total 3200 Student Activities

\$229,007.82

	<u>General Fund(10)</u>	<u>Public Purpose Trust(27)</u>	<u>Other Compt Approved (28)</u>	<u>Athletic / Activity(29)</u>	<u>Capital Reserve (690. 1850)(31)</u>
1000 Instruction					
1100 Regular Programs - Elementary / Secondary	12,560,039.84				
1200 Special Programs - Elementary / Secondary	5,067,664.16				
1300 Vocational Education	1,181,848.04				
1400 Other Instructional Programs - Elementary / Secondary	419,333.48				
1500 Nonpublic School Programs	17,110.00				
Total Instruction	\$19,245,995.52				
2000 Support Services					
2100 Support Services - Students	756,687.66				
2200 Support Services - Instructional Staff	1,321,394.62				
2300 Support Services - Administration	1,776,757.58				
2400 Support Services - Pupil Health	240,822.87				
2500 Support Services - Business	284,535.26				
2600 Operation and Maintenance of Plant Services	1,700,040.08				
2700 Student Transportation Services	1,343,307.28				
2800 Support Services - Central	192,741.42				
2900 Other Support Services	18,019.48				
Total Support Services	\$7,634,306.25				
3000 Operation of Non-Instructional Services					
3200 Student Activities	534,132.04				
3300 Community Services	4,173.30				
Total Operation of Non-Instructional Services	\$538,305.34				
5000 Other Expenditures and Financing Uses					
5100 Debt Service / Other Expenditures and Financing Uses	1,869,919.90				
5200 Interfund Transfers - Out	1,301,931.15				
Total Other Expenditures and Financing Uses	\$3,171,851.05				
TOTAL ACTUAL EXPENDITURES & OTHER FINANCING USES	\$30,590,458.16				

	<u>Capital Reserve (1431)(32)</u>	<u>Other Capital Projects Fund(39)</u>	<u>Debt Service(40)</u>	<u>Permanent(90)</u>	<u>Total</u>
1000 Instruction					
1100 Regular Programs - Elementary / Secondary		47,501.44			12,607,541.28
1200 Special Programs - Elementary / Secondary					5,067,664.16
1300 Vocational Education					1,181,848.04
1400 Other Instructional Programs - Elementary / Secondary					419,333.48
1500 Nonpublic School Programs					17,110.00
Total Instruction		\$47,501.44			\$19,293,496.96
2000 Support Services					
2100 Support Services - Students					756,687.66
2200 Support Services - Instructional Staff		100,608.75			1,422,003.37
2300 Support Services - Administration					1,776,757.58
2400 Support Services - Pupil Health					240,822.87
2500 Support Services - Business		709.28			285,244.54
2600 Operation and Maintenance of Plant Services	97,314.02	7,867,226.85			9,664,580.95
2700 Student Transportation Services	79,738.00				1,423,045.28
2800 Support Services - Central					192,741.42
2900 Other Support Services					18,019.48
Total Support Services	\$177,052.02	\$7,968,544.88			\$15,779,903.15
3000 Operation of Non-Instructional Services					
3200 Student Activities		229,007.82			763,139.86
3300 Community Services					4,173.30
Total Operation of Non-Instructional Services		\$229,007.82			\$767,313.16
5000 Other Expenditures and Financing Uses					
5100 Debt Service / Other Expenditures and Financing Uses					1,869,919.90
5200 Interfund Transfers - Out					1,301,931.15
Total Other Expenditures and Financing Uses					\$3,171,851.05
TOTAL ACTUAL EXPENDITURES & OTHER FINANCING USES	\$177,052.02	\$8,245,054.14			\$39,012,564.32

LEA : 112015203 Littlestown Area SD

Printed 10/31/2017 3:18:02 PM

PSERS Salary Data (Salary Data should relate to the General Fund only)

Amount Description	Amount
Total Salary Base for salaries subject to PSERS withholding	12,877,894.77
Total Federally Funded salaries subject to PSERS withholding	229,252.23
	<hr/>

Title I Expenditure Data

Amount Description	Amount
Expenditures Funded with Current Title I Funds	306,458.00
Expenditures Funded with Carry over Title I Funds	
Total Title I Expenditure Data	<hr/> \$306,458.00 <hr/>

Title I ARRA Amount

Amount Description	Amount
Portion of Total Title I Expenditures funded with ARRA Title I	<hr/>

Benefits for Staff Relative to Collective Bargaining Agreements

	OBJECT	COVERED	NOT COVERED	TOTAL
10 General Fund				
	211 Medical Insurance			
	212 Dental Insurance			
	215 Eye Care Insurance			
	216 Prescription Insurance			
	271 Self-Insurance Medical Benefits	1,349,461.14	109,415.77	1,458,876.91
	272 Self-Insurance Dental Benefits	129,872.41	10,530.20	140,402.61
	275 Self-Insurance Eye Care Benefits	11,438.64	927.46	12,366.10
	276 Self-Insurance Prescription Benefits	227,562.97	18,451.05	246,014.02
	FUND TOTAL	\$1,718,335.16	\$139,324.48	\$1,857,659.64
50 Enterprise Fund				
	211 Medical Insurance			
	212 Dental Insurance			
	215 Eye Care Insurance			
	216 Prescription Insurance			
	271 Self-Insurance Medical Benefits	49,893.87	12,473.47	62,367.34
	272 Self-Insurance Dental Benefits	3,097.56	774.39	3,871.95
	275 Self-Insurance Eye Care Benefits	340.28	85.07	425.35
	276 Self-Insurance Prescription Benefits	8,413.73	2,103.43	10,517.16
	FUND TOTAL	\$61,745.44	\$15,436.36	\$77,181.80
60 Internal Service Fund	No Self Insurance data to report			
	211 Medical Insurance			
	212 Dental Insurance			
	215 Eye Care Insurance			
	216 Prescription Insurance			
	271 Self-Insurance Medical Benefits			
	272 Self-Insurance Dental Benefits			
	275 Self-Insurance Eye Care Benefits			
	276 Self-Insurance Prescription Benefits			
	FUND TOTAL			
Total of All Funds		\$1,780,080.60	\$154,760.84	\$1,934,841.44

LEA : 112015203 Littlestown Area SD

Printed 10/31/2017 3:18:04 PM

Function	Special Education (Prior Year)	Nonspecial Education (Prior Year)	Total (Prior Year)	Special Education (Current Year)	Nonspecial Education (Current Year)	Total (Current Year)
2120 Guidance Services	125,354.21	501,416.83	626,771.04	126,173.94	504,695.78	630,869.72
2140 Psychological Services	86,640.32	57,760.22	144,400.54	75,026.34	50,017.56	125,043.90
2150 Speech Pathology and Audiology Services						
2160 Social Work Services						
2260 Instruction and Curriculum Development Services	182,928.39	182,928.40	365,856.79	194,135.44	194,135.43	388,270.87
2350 Legal and Accounting Services	3,712.25	44,682.75	48,395.00	11,165.90	39,662.60	50,828.50
2420 Medical Services						
2440 Nursing Services	47,130.05	188,520.18	235,650.23	48,164.57	192,658.30	240,822.87
2700 Student Transportation Services	428,568.97	521,417.11	949,986.08	323,710.11	803,762.12	1,127,472.23
Total	\$874,334.19	\$1,496,725.49	\$2,371,059.68	\$778,376.30	\$1,784,931.79	\$2,563,308.09

(PRINCIPAL AMOUNTS ONLY)

GOVERNMENTAL FUNDS/ ACTIVITIES

	Short-Term Borrowing	General Obligation Bonds/Notes	Authority Building Obligations	Other Long-Term Debt	Other Post-Employment Benefits (OPEB)	Compensated Absences	Net Pension Liability	Total
1. Debt at Beginning of Fiscal Year		27,050,000.00		1,029,558.00	1,586,091.00	359,100.00	41,562,359.00	71,587,108.00
2. Additional Debt Incurred During Year				196,819.00	339,069.00		10,647,235.00	11,183,123.00
3. Retirements and Repayments		740,000.00		161,131.00	190,500.00	1,200.00	3,145,358.00	4,238,189.00
4. Debt at End of Fiscal Year		26,310,000.00		1,065,246.00	1,734,660.00	357,900.00	49,064,236.00	78,532,042.00
5. Accreted Interest at End Of Fiscal Year								
6. Total Debt and Accreted Interest		26,310,000.00		1,065,246.00	1,734,660.00	357,900.00	49,064,236.00	78,532,042.00
7. Current Portion P&I - Due within 1 year		1,815,013.00		135,758.28	270,000.00	50,000.00		2,270,771.28
8. Interest Paid during current fiscal year		1,073,813.52		2,319.38				1,076,132.90

(PRINCIPAL AMOUNTS ONLY)

PROPRIETARY FUNDS

	Short-Term Borrowing	General Obligation Bonds/Notes	Authority Building Obligations	Other Long-Term Debt	Other Post-Employment Benefits (OPEB)	Compensated Absences	Net Pension Liability	Total
1. Debt at Beginning of Fiscal Year					7,272.00	20,418.00	973,333.00	1,001,023.00
2. Additional Debt Incurred During Year					2,375.00	5,007.00	301,860.00	309,242.00
3. Retirements and Repayments					1,100.00		88,429.00	89,529.00
4. Debt at End of Fiscal Year					8,547.00	25,425.00	1,186,764.00	1,220,736.00
5. Accreted Interest at End Of Fiscal Year								
6. Total Debt and Accreted Interest					8,547.00	25,425.00	1,186,764.00	1,220,736.00
7. Current Portion P&I - Due within 1 year						4,000.00		4,000.00
8. Interest Paid during current fiscal year								

Total Principal and Interest Payments Made by Your School - All Funds

Function	Fund		Principal (910)	Principal (920)	Interest (830)	Total (Principal +Interest)	Misc Other Uses (990)
5110	10	General Fund	793,787.00		1,076,132.90	1,869,919.90	
5110	20	Special Revenue Funds					
5110	30	Capital Projects Funds					
5110	40	Debt Service Fund					
5110	90	Permanent Fund					
5120	10	General Fund					
5120	20	Special Revenue Funds					
5120	30	Capital Projects Funds					
5120	40	Debt Service Fund					

Total Debt Payments - Governmental Funds			\$793,787.00		\$1,076,132.90	\$1,869,919.90	
---	--	--	---------------------	--	-----------------------	-----------------------	--

Function	Fund		Principal (910)	Principal (920)	Interest (830)	Total (Principal +Interest)
5110	50	Enterprise Fund				
5110	60	Internal Service Fund				
5120	50	Enterprise Fund				
5120	60	Internal Service Fund				

Total Debt Payments - Proprietary Funds						
--	--	--	--	--	--	--

Debt Details
Governmental Funds/ Activities

Debt Category	Debt Issue Date (MM/YYYY)	Principal Amounts Only			Debt at End of Fiscal Year	Current Portion Due Within One Year (Principal and Interest)	Interest Paid During Fiscal Year
		Debt at Beginning of Fiscal Year	Additions	Reductions / Repayments			
General Obligation Bonds/Notes – CIB	07/2015	27,050,000.00		740,000.00	26,310,000.00	1,815,013.00	1,073,813.52
Extended Term Financing Agreements			196,819.00	55,686.00	141,133.00	55,758.28	2,319.38
Other Long Term Debt/Liabilities		1,029,558.00		105,445.00	924,113.00	80,000.00	
Compensated Absences		359,100.00		1,200.00	357,900.00	50,000.00	
Other Post-Employment Benefits (OPEB)		1,586,091.00	339,069.00	190,500.00	1,734,660.00	270,000.00	
Net Pension Liability		41,562,359.00	10,647,235.00	3,145,358.00	49,064,236.00		
Totals for Debt Entered:		\$71,587,108.00	\$11,183,123.00	\$4,238,189.00	\$78,532,042.00	\$2,270,771.28	\$1,076,132.90

Bond Details
Proprietary Funds

Debt Category	Debt Issue Date (MM/YYYY)	Principal Amounts Only			Debt at End of Fiscal Year	Current Portion Due Within One Year (Principal and Interest)	Interest Paid During Fiscal Year
		Debt at Beginning of Fiscal Year	Additions	Reductions / Repayments			
Compensated Absences		20,418.00	5,007.00		25,425.00	4,000.00	
Other Post-Employment Benefits (OPEB)		7,272.00	2,375.00	1,100.00	8,547.00		
Net Pension Liability		973,333.00	301,860.00	88,429.00	1,186,764.00		
Totals for Debt Entered:		\$1,001,023.00	\$309,242.00	\$89,529.00	\$1,220,736.00	\$4,000.00	

General Fund (10)

Section 1: Tuition/Purchased Services as Reported within Expenditure Detail

	Amount
Tuition Reported in General Fund Expenditures 1000-560	1,885,322.80
Purchased Services in General Fund Expenditures 1000-594 and 1000-597	472.12
Section 1 Total	\$1,885,794.92

Section 2: Tuition Paid to Institution Types During Fiscal Year

	Tuition Paid For Nonspecial Education	Tuition Paid For Special Education	Total
1 1306 Institutions	176,984.60	394,357.73	571,342.33
2 Institutionalized Children's Programs			
3 Juveniles Incarcerated in Adult Facilities	472.12		472.12
4 Residential Treatment Facilities			
5 Other Local Education Agencies	92,125.00	22,956.36	115,081.36
6 Brick and Mortar Charter Schools	77,418.52	188,599.81	266,018.33
7 Cyber Charter Schools	424,155.28	396,301.12	820,456.40
8 Career and Technology Centers	112,424.38		112,424.38
9 Approved Private Schools			
10 PA Chartered Schools for the Deaf and Blind			
11 Private Residential Rehabilitative Institutions			
12 Juvenile Detention Centers			
13 Special Program Jointures			
14 Other Tuition Not Included Elsewhere In This Section			
Section 2 Total	\$883,579.90	\$1,002,215.02	\$1,885,794.92

1 .	<u>Student Transportation Services for Educational Field Trips</u>	4,696.44
2 .	<u>Student Transportation Services for Student Activities</u>	20,164.07
3 .	<u>Rental of Vehicles for Student Transportation Services</u>	
4 .	<u>Capital Reserve Funds</u>	79,738.00

Include only district-owned transportation expenditures paid from State or local money.
 DO NOT include federal expenditures or payments to contract service providers.
 Contracted transportation services should not be recorded on this schedule.